

# COUNTY OF SEMINOLE STATE OF FLORIDA

## INDEX OF RIGHT OF WAY PLANS

- SHEET NO.
1. COVER SHEET
  2. KEY MAP
  3. R/W MAP STA. 246+62.80 TO STA. 260+00
  4. R/W MAP STA. 260+00 TO STA. 276+00
  5. R/W MAP STA. 276+00 TO STA. 291+00
  6. R/W MAP STA. 291+00 TO STA. 306+00
  7. R/W MAP STA. 306+00 TO STA. 319+00
  8. TABLE OF OWNERSHIPS
  9. TABLE OF OWNERSHIPS - CONTINUED

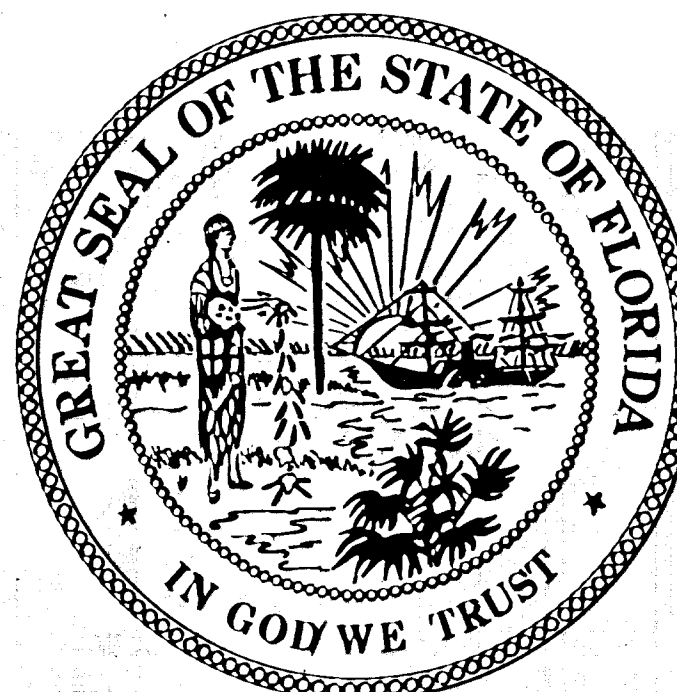
## BOARD OF COUNTY COMMISSIONERS

PAT WARREN  
District 1

ROBERT STURM  
District 2

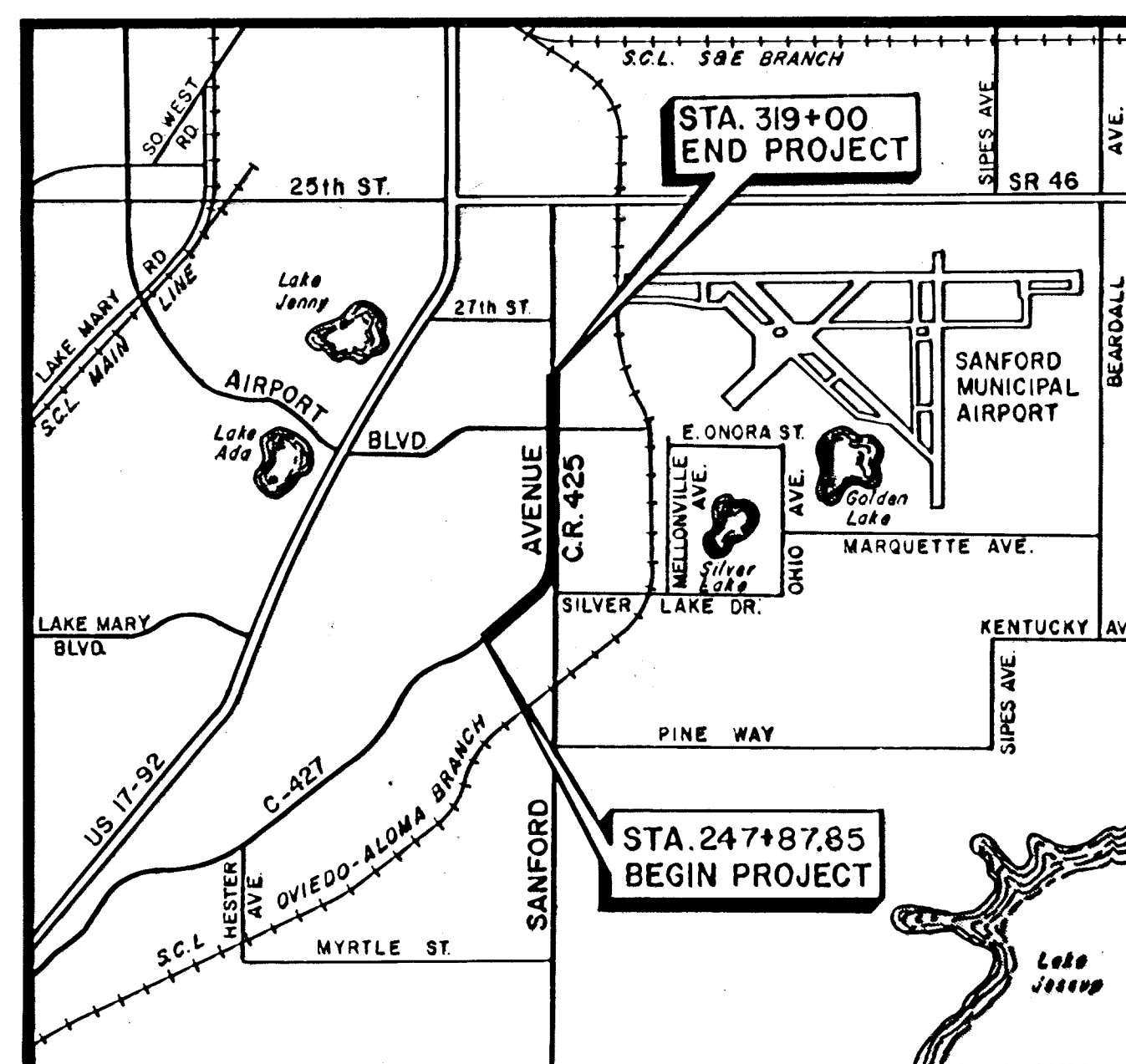
DARYL MC LAIN  
District 5

DICK VAN DER WEIDE  
District 3



LARRY EURLONG  
District 4

# PLANS OF PROPOSED RIGHT OF WAY SANFORD AVENUE (C.R. 425) LAKE MARY BOULEVARD TO AIRPORT BOULEVARD



LOCATION MAP  
N.T.S.

DATE	BY	REVISIONS DESCRIPTION
6-15-92	D.M.	EXPRESSWAY FROM TOWNE SURVEY, REPS. REMOVED PARCEL 802.5
10-14-92	D.M.	DELETED PARCELS 703, 704, 705, 706, 707, 709, 710, 750, 722, 723, 724, 725, 726, 727, 728, 729, 730, 731, 732, 733, 734, 735, 736, 737, 738, 739, 740, 741, 742, 743, 744, 745, 746, 747, 748, 749, 750, 751, 752, 753, 754, 755, 756, 757, 758, 759, 760, 761, 762, 763, 764, 765, 766, 767, 768, 769, 770, 771, 772, 773, 774, 775, 776, 777, 778, 779, 780, 781, 782, 783, 784, 785, 786, 787, 788, 789, 790, 791, 792, 793, 794, 795, 796, 797, 798, 799, 800, 801, 802, 803, 804, 805, 806, 807, 808, 809, 810, 811, 812, 813, 814, 815, 816, 817, 818, 819, 820, 821, 822, 823, 824, 825, 826, 827, 828, 829, 830, 831, 832, 833, 834, 835, 836, 837, 838, 839, 840, 841, 842, 843, 844, 845, 846, 847, 848, 849, 850, 851, 852, 853, 854, 855, 856, 857, 858, 859, 860, 861, 862, 863, 864, 865, 866, 867, 868, 869, 870, 871, 872, 873, 874, 875, 876, 877, 878, 879, 880, 881, 882, 883, 884, 885, 886, 887, 888, 889, 890, 891, 892, 893, 894, 895, 896, 897, 898, 899, 900, 901, 902, 903, 904, 905, 906, 907, 908, 909, 910, 911, 912, 913, 914, 915, 916, 917, 918, 919, 920, 921, 922, 923, 924, 925, 926, 927, 928, 929, 930, 931, 932, 933, 934, 935, 936, 937, 938, 939, 940, 941, 942, 943, 944, 945, 946, 947, 948, 949, 950, 951, 952, 953, 954, 955, 956, 957, 958, 959, 960, 961, 962, 963, 964, 965, 966, 967, 968, 969, 970, 971, 972, 973, 974, 975, 976, 977, 978, 979, 980, 981, 982, 983, 984, 985, 986, 987, 988, 989, 990, 991, 992, 993, 994, 995, 996, 997, 998, 999, 1000
10-28-92	D.M.	DELETED PARCELS 737, 738, 739, 740, 741, 742, 743, 744, 745, 746, 747, 748, 749, 750, 751, 752, 753, 754, 755, 756, 757, 758, 759, 760, 761, 762, 763, 764, 765, 766, 767, 768, 769, 770, 771, 772, 773, 774, 775, 776, 777, 778, 779, 780, 781, 782, 783, 784, 785, 786, 787, 788, 789, 790, 791, 792, 793, 794, 795, 796, 797, 798, 799, 800, 801, 802, 803, 804, 805, 806, 807, 808, 809, 810, 811, 812, 813, 814, 815, 816, 817, 818, 819, 820, 821, 822, 823, 824, 825, 826, 827, 828, 829, 830, 831, 832, 833, 834, 835, 836, 837, 838, 839, 840, 841, 842, 843, 844, 845, 846, 847, 848, 849, 850, 851, 852, 853, 854, 855, 856, 857, 858, 859, 860, 861, 862, 863, 864, 865, 866, 867, 868, 869, 870, 871, 872, 873, 874, 875, 876, 877, 878, 879, 880, 881, 882, 883, 884, 885, 886, 887, 888, 889, 890, 891, 892, 893, 894, 895, 896, 897, 898, 899, 900, 901, 902, 903, 904, 905, 906, 907, 908, 909, 910, 911, 912, 913, 914, 915, 916, 917, 918, 919, 920, 921, 922, 923, 924, 925, 926, 927, 928, 929, 930, 931, 932, 933, 934, 935, 936, 937, 938, 939, 940, 941, 942, 943, 944, 945, 946, 947, 948, 949, 950, 951, 952, 953, 954, 955, 956, 957, 958, 959, 960, 961, 962, 963, 964, 965, 966, 967, 968, 969, 970, 971, 972, 973, 974, 975, 976, 977, 978, 979, 980, 981, 982, 983, 984, 985, 986, 987, 988, 989, 990, 991, 992, 993, 994, 995, 996, 997, 998, 999, 1000
2-16-93	D.M.	TITLE SHEET (COMMISSIONERS) DELETED PARCELS 740, 741, 742, 743, 744, 745, 746, 747, 748, 749, 750, 751, 752, 753, 754, 755, 756, 757, 758, 759, 760, 761, 762, 763, 764, 765, 766, 767, 768, 769, 770, 771, 772, 773, 774, 775, 776, 777, 778, 779, 780, 781, 782, 783, 784, 785, 786, 787, 788, 789, 790, 791, 792, 793, 794, 795, 796, 797, 798, 799, 800, 801, 802, 803, 804, 805, 806, 807, 808, 809, 810, 811, 812, 813, 814, 815, 816, 817, 818, 819, 820, 821, 822, 823, 824, 825, 826, 827, 828, 829, 830, 831, 832, 833, 834, 835, 836, 837, 838, 839, 840, 841, 842, 843, 844, 845, 846, 847, 848, 849, 850, 851, 852, 853, 854, 855, 856, 857, 858, 859, 860, 861, 862, 863, 864, 865, 866, 867, 868, 869, 870, 871, 872, 873, 874, 875, 876, 877, 878, 879, 880, 881, 882, 883, 884, 885, 886, 887, 888, 889, 890, 891, 892, 893, 894, 895, 896, 897, 898, 899, 900, 901, 902, 903, 904, 905, 906, 907, 908, 909, 910, 911, 912, 913, 914, 915, 916, 917, 918, 919, 920, 921, 922, 923, 924, 925, 926, 927, 928, 929, 930, 931, 932, 933, 934, 935, 936, 937, 938, 939, 940, 941, 942, 943, 944, 945, 946, 947, 948, 949, 950, 951, 952, 953, 954, 955, 956, 957, 958, 959, 960, 961, 962, 963, 964, 965, 966, 967, 968, 969, 970, 971, 972, 973, 974, 975, 976, 977, 978, 979, 980, 981, 982, 983, 984, 985, 986, 987, 988, 989, 990, 991, 992, 993, 994, 995, 996, 997, 998, 999, 1000
3-16-93	R.M.	ADDED PARCEL 171.8 172
4-26-93	D.A.	TITLE SHEET (COMMISSIONERS) R/W MAP CERTIFICATE
5-6-93	D.A.	SKETCH PARCELS 171, 172, 173, 174, 175, 176, 177, 178, 179, 180, 181, 182, 183, 184, 185, 186, 187, 188, 189, 190, 191, 192, 193, 194, 195, 196, 197, 198, 199, 200, 201, 202, 203, 204, 205, 206, 207, 208, 209, 210, 211, 212, 213, 214, 215, 216, 217, 218, 219, 220, 221, 222, 223, 224, 225, 226, 227, 228, 229, 230, 231, 232, 233, 234, 235, 236, 237, 238, 239, 240, 241, 242, 243, 244, 245, 246, 247, 248, 249, 250, 251, 252, 253, 254, 255, 256, 257, 258, 259, 260, 261, 262, 263, 264, 265, 266, 267, 268, 269, 270, 271, 272, 273, 274, 275, 276, 277, 278, 279, 280, 281, 282, 283, 284, 285, 286, 287, 288, 289, 290, 291, 292, 293, 294, 295, 296, 297, 298, 299, 300, 301, 302, 303, 304, 305, 306, 307, 308, 309, 310, 311, 312, 313, 314, 315, 316, 317, 318, 319, 320, 321, 322, 323, 324, 325, 326, 327, 328, 329, 330, 331, 332, 333, 334, 335, 336, 337, 338, 339, 340, 341, 342, 343, 344, 345, 346, 347, 348, 349, 350, 351, 352, 353, 354, 355, 356, 357, 358, 359, 360, 361, 362, 363, 364, 365, 366, 367, 368, 369, 370, 371, 372, 373, 374, 375, 376, 377, 378, 379, 380, 381, 382, 383, 384, 385, 386, 387, 388, 389, 390, 391, 392, 393, 394, 395, 396, 397, 398, 399, 400, 401, 402, 403, 404, 405, 406, 407, 408, 409, 410, 411, 412, 413, 414, 415, 416, 417, 418, 419, 420, 421, 422, 423, 424, 425, 426, 427, 428, 429, 430, 431, 432, 433, 434, 435, 436, 437, 438, 439, 440, 441, 442, 443, 444, 445, 446, 447, 448, 449, 450, 451, 452, 453, 454, 455, 456, 457, 458, 459, 460, 461, 462, 463, 464, 465, 466, 467, 468, 469, 470, 471, 472, 473, 474, 475, 476, 477, 478, 479, 480, 481, 482, 483, 484, 485, 486, 487, 488, 489, 490, 491, 492, 493, 494, 495, 496, 497, 498, 499, 500, 501, 502, 503, 504, 505, 506, 507, 508, 509, 510, 511, 512, 513, 514, 515, 516, 517, 518, 519, 520, 521, 522, 523, 524, 525, 526, 527, 528, 529, 530, 531, 532, 533, 534, 535, 536, 537, 538, 539, 540, 541, 542, 543, 544, 545, 546, 547, 548, 549, 550, 551, 552, 553, 554, 555, 556, 557, 558, 559, 560, 561, 562, 563, 564, 565, 566, 567, 568, 569, 570, 571, 572, 573, 574, 575, 576, 577, 578, 579, 580, 581, 582, 583, 584, 585, 586, 587, 588, 589, 590, 591, 592, 593, 594, 595, 596, 597, 598, 599, 600, 601, 602, 603, 604, 605, 606, 607, 608, 609, 610, 611, 612, 613, 614, 615, 616, 617, 618, 619, 620, 621, 622, 623, 624, 625, 626, 627, 628, 629, 630, 631, 632, 633, 634, 635, 636, 637, 638, 639, 640, 641, 642, 643, 644, 645, 646, 647, 648, 649, 650, 651, 652, 653, 654, 655, 656, 657, 658, 659, 660, 661, 662, 663, 664, 665, 666, 667, 668, 669, 670, 671, 672, 673, 674, 675, 676, 677, 678, 679, 680, 681, 682, 683, 684, 685, 686, 687, 688, 689, 690, 691, 692, 693, 694, 695, 696, 697, 698, 699, 700, 701, 702, 703, 704, 705, 706, 707, 708, 709, 710, 711, 712, 713, 714, 715, 716, 717, 718, 719, 720, 721, 722, 723, 724, 725, 726, 727, 728, 729, 730, 731, 732, 733, 734, 735, 736, 737, 738, 739, 740, 741, 742, 743, 744, 745, 746, 747, 748, 749, 750, 751, 752, 753, 754, 755, 756, 757, 758, 759, 760, 761, 762, 763, 764, 765, 766, 767, 768, 769, 770, 771, 772, 773, 774, 775, 776, 777, 778, 779, 780, 781, 782, 783, 784, 785, 786, 787, 788, 789, 790, 791, 792, 793, 794, 795, 796, 797, 798, 799, 800, 801, 802, 803, 804, 805, 806, 807, 808, 809, 810, 811, 812, 813, 814, 815, 816, 817, 818, 819, 820, 821, 822, 823, 824, 825, 826, 827, 828, 829, 830, 831, 832, 833, 834, 835, 836, 837, 838, 839, 840, 841, 842, 843, 844, 845, 846, 847, 848, 849, 850, 851, 852, 853, 854, 855, 856, 857, 858, 859, 860, 861, 862, 863, 864, 865, 866, 867, 868, 869, 870, 871, 872, 873, 874, 875, 876, 877, 878, 879, 880, 881, 882, 883, 884, 885, 886, 887, 888, 889, 890, 891, 892, 893, 894, 895, 896, 897, 898, 899, 900, 901, 902, 903, 904, 905, 906, 907, 908, 909, 910, 911, 912, 913, 914, 915, 916, 917, 918, 919, 920, 921, 922, 923, 924, 925, 926, 927, 928, 929, 930, 931, 932, 933, 934, 935, 936, 937, 938, 939, 940, 941, 942, 943, 944, 945, 946, 947, 948, 949, 950, 951, 952, 953, 954, 955, 956, 957, 958, 959, 960, 961, 962, 963, 964, 965, 966, 967, 968, 969, 970, 971, 972, 973, 974, 975, 976, 977, 978, 979, 980, 981, 982, 983, 984, 985, 986, 987, 988, 989, 990, 991, 992, 993, 994, 995, 996, 997, 998, 999, 1000
9-13-93	D.A.	NEW SKETCH PARCEL 171.8 172 173 174 175 176 177 178 179 180 181 182 183 184 185 186 187 188 189 190 191 192 193 194 195 196 197 198 199 200 201 202 203 204 205 206 207 208 209 210 211 212 213 214 215 216 217 218 219 220 221 222 223 224 225 226 227 228 229 230 231 232 233 234 235 236 237 238 239 240 241 242 243 244 245 246 247 248 249 250 251 252 253 254 255 256 257 258 259 260 261 262 263 264 265 266 267 268 269 270 271 272 273 274 275 276 277 278 279 280 281 282 283 284 285 286 287 288 289 290 291 292 293 294 295 296 297 298 299 300 301 302 303 304 305 306 307 308 309 310 311 312 313 314 315 316 317 318 319 320 321 322 323 324 325 326 327 328 329 330 331 332 333 334 335 336 337 338 339 340 341 342 343 344 345 346 347 348 349 350 351 352 353 354 355 356 357 358 359 360 361 362 363 364 365 366 367 368 369 370 371 372 373 374 375 376 377 378 379 380 381 382 383 384 385 386 387 388 389 390 391 392 393 394 395 396 397 398 399 400 401 402 403 404 405 406 407 408 409 410 411 412 413 414 415 416 417 418 419 420 421 422 423 424 425 426 427 428 429 430 431 432 433 434 435 436 437 438 439 440 441 442 443 444 445 446 447 448 449 450 451 452 453 454 455 456 457 458 459 460 461 462 463 464 465 466 467 468 469 470 471 472 473 474 475 476 477 478 479 480 481 482 483 484 485 486 487 488 489 490 491 492 493 494 495 496 497 498 499 500 501 502 503 504 505 506 507 508 509 510 511 512 513 514 515 516 517 518 519 520 521 522 523 524 525 526 527 528 529 530 531 532 533 534 535 536 537 538 539 540 541 542 543 544 545 546 547 548 549 550 551 552 553 554 555 556 557 558 559 560 561 562 563 564 565 566 567 568 569 570 571 572 573 574 575 576 577 578 579 580 581 582 583 584 585 586 587 588 589 590 591 592 593 594 595 596 597 598 599 600 601 602 603 604 605 606 607 608 609 610 611 612 613 614 615 616 617 618 619 620 621 622 623 624 625 626 627 628 629 630 631 632 633 634 635 636 637 638 639 640 641 642 643 644 645 646 647 648 649 650 651 652 653 654 655 656 657 658 659 660 661 662 663 664 665 666 667 668 669 670 671 672 673 674 675 676 677 678 679 680 681 682 683 684 685 686 687 688 689 690 691 692 693 694 695 696 697 698 699 700 701 702 703 704 705 706 707 708 709 710 711 712 713 714 715 716 717 718 719 720 721 722 723 724 725 726 727 728 729 730 731 732 733 734 735 736 737 738 739 740 741 742 743 744 745 746 747 748 749 750 751 752 753 754 755 756 757 758 759 760 761 762 763 764 765 766 767 768 769 770 771 772 773 774 775 776 777 778 779 780 781 782 783 784 785 786 787 788 789 790 791 792 793 794 795 796 797 798 799 800 801 802 803 804 805 806 807 808 809 810 811 812 813 814 815 816 817 818 819 820 821 822 823 824 825 826 827 828 829 830 831 832 833 834 835 836 837 838 839 840 841 842 843 844 845 846 847 848 849 850 851 852 853 854 855 856 857 858 859 860 861 862 863 864 865 866 867 868 869 870 87





#### CERTIFICATION

I HEREBY CERTIFY that this map, consisting of sheets 1 through 8 is a true and accurate depiction of a field survey, performed for Co. of Sem. Fl. Public Works Dept. in October, 1986, under the responsible direction of WILLIAM A. HERX, Florida Registered Land Surveyor No. 3182, said survey being shown and certified in field books. I further certify, to the best of my knowledge and belief, that this map is true and accurate and meets the minimum technical standards for boundary surveys as set forth in Rule 21HH-6 as adopted by the Florida Board of Land Surveyors on September, 1981.

Fl. Reg. Land Surveyor No. 3182

Seminole County, Fl., Dated:

#### KNOWN UTILITIES INVOLVED

1. City of Sanford Water & Sewer
2. Florida Power and Light Co.
3. Southern Bell Telephone and Telegraph Co.
4. Florida Public Utilities, Gas
5. Cablevision of Central Florida

#### REFERENCE

- State Job 77510-2602 (1958)  
State Project 77510-2608 (1965)  
County Project 085057 (1996)  
Misc. Recorded Plats

#### NOTES

1. Easings shown hereon are based on the C of Sanford Ave. as being N00°30'04"W, as shown on State of Florida Road Department section 77510-2602, dated Dec. 22, 1958.
2. All lot dimensions are Plat dimensions, unless otherwise noted.
3. Survey shown hereon was performed in October 1986.
4. Aerial photography was completed in May 1986.
5. Those areas located outside the crosshatched area are within the city limits of Sanford Florida, those inside the crosshatched area are within Seminole County limits.
6. TCE = Temporary Construction Easement
7. 000 = Parcel Number

#### REVISIONS

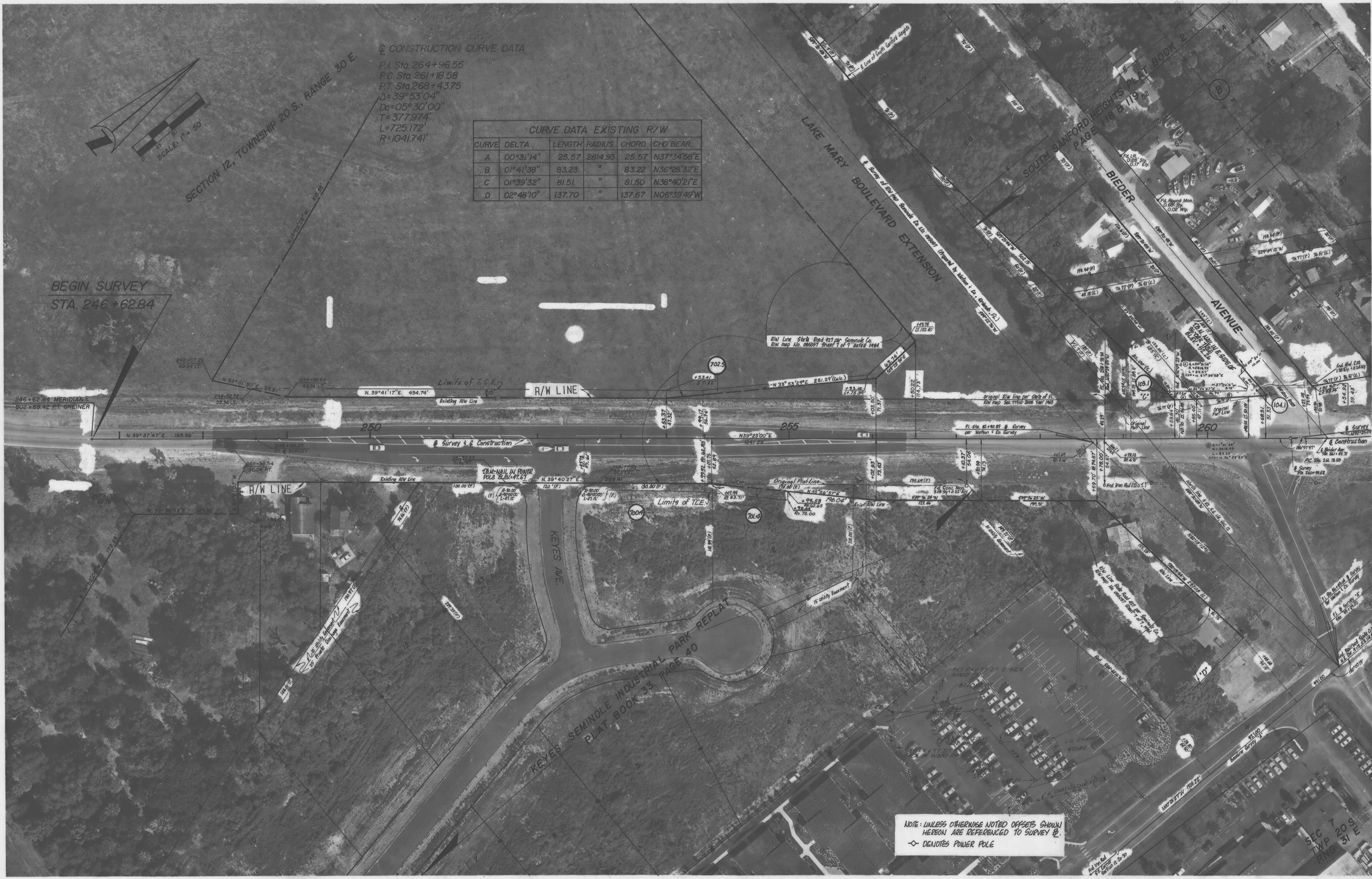
DATE	BY	DESCRIPTION	DATE	BY	DESCRIPTION
8/19/92	RWT	CHANGED SOUTH END OF RIGHT-OF-WAY			

DESIGNED BY	NAME	DATE	DESIGNED BY	NAME	DATE
CHECKED BY	N.A.H.		CHECKED BY		
SUPERVISED BY	P.J.N.				

SEMINOLE COUNTY ENGINEERING DEPARTMENT	
APPROVED BY	DATE

### SANFORD AVENUE (C.R. 425) KEY MAP - RIGHT OF WAY MAP





CONSTRUCTION CURVE DATA

P.I. Sta. 264+96.55  
P.C. Sta. 261+18.58  
P.T. Sta. 268+43.75  
 $\Delta = 39^\circ 53' 04''$   
 $D_c = 05^\circ 30' 00''$   
 $T = 377.974'$   
 $L = 725.172'$   
 $R = 1041.741'$

CURVE DATA EXISTING R/W					
CURVE	DELTA	LENGTH	RADIUS	CHORD	CHD BEAR.
A	00°31'14"	25.57	2814.93	25.57	N37°34'58"E
B	01°41'38"	83.23	"	83.22	N36°28'32"E
C	01°39'32"	81.51	"	81.50	N38°40'21"E
D	02°48'10"	137.70	"	137.67	N06°39'48"W

NOTE: UNLESS OTHERWISE NOTED OFFSETS SHOWN  
HEREON ARE REFERENCED TO SURVEY P.  
◇ DENOTES POWER POLE

PREPARED BY <b>STANLEY/MERIDIAN, INC.</b> 5151 ADANSON ST. SUITE 202 ORLANDO, FL. 32804 (305) 644-2262		<b>REVISIONS</b>				DESIGNED BY R.J.N.		NAME DATE		DESIGNED BY NAME DATE		SEMINOLE COUNTY ENGINEERING DEPARTMENT		<b>SANFORD AVENUE (C.R. 425)</b> STA. 246+62.84 TO STA. 260+00	
DATE	BY	DESCRIPTION	DATE	BY	DESCRIPTION	DATE	DESCRIPTION	CHECKED BY	DATE	CHECKED BY	DATE	DATE	APPROVED BY	DATE	
6-15-92	D.M.	EXPRESSWAY FROM TOWNE SURVEY, REFS.	8/19/92	RWT	ADDED PARCELS 745, 746, 747 AND ADDED PARCEL NO. 748.	10-13-92	D.M. CHANGED PARCELS 704, 104, 8703 TO 103 & 104								
5-6-96	D.M.	REMOVED PARCEL 802.5	5/9/92	RWT	ADDED STATION AND OFFSET TO T.C.E.	10-28-92	D.M. DELETED PARCELS 704, 704 & 703								
		PARCEL 104				2-16-93	D.M. DELETED PARCEL 105								
							D.M. DELETED PARCELS 745, 746, 747 & 748								
								SUPERVISED BY R.J.N.							

BOSWORTH AERIAL SURVEYS, INC.  
Photogrammetric Consultants

1016-3-01

Sheet no. 3 of 9









DETERMINATION OF ACCURACY IS THE RESPONSIBILITY OF THE USER OF THIS INFORMATION AND NOT THE PROVIDER. THE PROVIDER MAKES NO CLAIM OF ANY GUARANTEE OF ACCURACY.

PREPARED BY  
**STANLEY/MERIDIAN, INC.**  
5151 ADAMSON ST. SUITE 202  
ORLANDO, FL 32804 (305) 644-2262

DATE	BY	DESCRIPTION
7-15-92	D.M.	R/W CHANGED, S.W. COR. ROSE DR. & SANFORD AV.
10-15-92	D.M.	REVISED 125.9, ADDED PARCEL 170. DELETED PARCELS 720, 721, 723, 725, 724, 727, 728, 729 731, 732 & 734

DATE	BY	DESCRIPTION

NAME	DATE	NAME	DATE
DESIGNED BY <b>P.J.N.</b>		DESIGNED BY	
CHECKED BY <b>W.A.H.</b>		CHECKED BY	
SUPERVISED BY <b>P.J.N.</b>			

SEMINOLE COUNTY  
ENGINEERING DEPARTMENT  
APPROVED BY  
DATE  
10/16-5-01

**SANFORD AVENUE (C.R. 425)**  
STA. 276+00 TO STA. 291+00







Scale: 1" = 50'

Section 12 Township 20 South Range 30 East  
South Pinecrest Second Addition  
Plat Book 10 Page 89

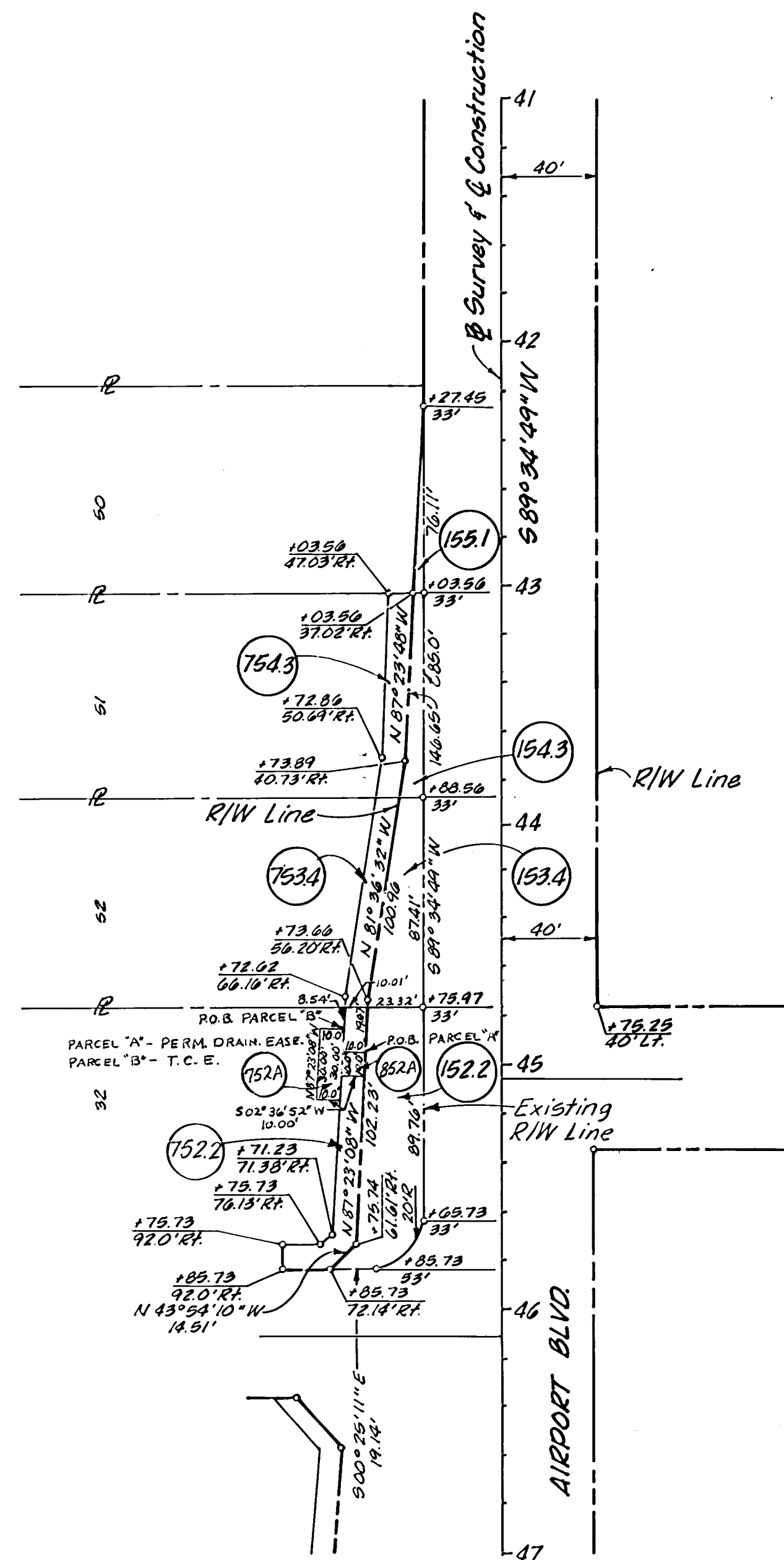








TABLE OF OWNERSHIPS

PARCEL NO.	SHEET NO.	NAME	AREA TAKEN SQ. FT.	REMAINDERS		COMMENTS	PARCEL NO.	SHEET NO.	NAME	AREA TAKEN SQ. FT.	REMAINDERS		COMMENTS
				RIGHT	LEFT						RIGHT	LEFT	
104.1	384	AUDIE POWELL & BELLE POWELL (WF)	1099.00		0.386 AC. ±	O.R.B. 502 PG. 588	700.4	3	KEYES SEMINOLE INDUSTRIAL PARK INVESTORS, LTD.	1282.64			O.R.B. 1492 PG. 1608
							701.4	3	KEYES SEMINOLE INDUSTRIAL PARK INVESTORS, LTD.	969.86			O.R.B. 1492 PG. 1608
106.3	4	GARY DeGAETANI (IND)	28.17		0.564 AC. ±	O.R.B. 1971 PG. 1261	702.5	3	BAKER FARMS, INC.	1994.31			O.R.B. 1263 PG. 709
107.2	4	ROBERT SMITH & MERCERDEES L. MURRELL	1695.54		0.498 AC. ±	O.R.B. 697 PG. 282 O.R.B. 1710 PG. 995							
108.2	4	SUDA INC.	340.29		2020 AC. ±	O.R.B. 1578 PG. 38 O.R.B. 1762 PG. 1283							
110.1	4	MEIXSELL	142.25	180 AC. ±		O.R.B. 1277 PG. 49							
111.4	4	G.W. JONES	2793.74	294 AC. ±		O.R.B. 1359 PG. 1465							
113.2	4	RUDOLPH ROBERTS & GALEN F. MILLER	200.00		1076 AC. ±	O.R.B. 1478 PG. 873							
114.1	4	THOMAS F. WEISS OZONA H. WEISS (WF)	6090.16		0.845 AC. ±	O.R.B. 378 PG. 474	708.2	4	SUDA INC.	3346.51			O.R.B. 1578 PG.38 O.R.B. 1762 PG. 1283
116.1	485	J. BRAILEY & LOUISE T. ODHAM	10539.10	7,638.71		P.B. 19 PG. 76							
114A	4	THOMAS F WEISS OZONA H. WEISS (WF)	6000.00										
120.3	5	JEFFREY MICHAEL COUNELIS	199.97	0.536 AC. ±		O.R.B. 1205 PG. 182	711.4	4	G. W. JONES	500			
121.1	5	ODHAM	10324.49	7,744.58		P.B. 19 PG. 76	712.2	4	SUDA INC.	2000.00			O.R.B. 1506 PG. 1921 ( MONROE MEADOWS PLAT )
125.9	5	SANORA HOME OWNERS ASSOCIATION, INC.	2795.00	1844.62		O.R.B. 1272 PG. 1819	713.2	4	RUDOLPH ROBERTS & GALEN F. MILLER	1341.25			O.R.B. 1478 PG. 873
128.2	5	JOHN J. BEILSTEIN & LORETTA L. BEILSTEIN (WF)	199.97		0.370 AC. ±	O.R.B. 1516 PG. 139	714.1	4	THOMAS F. WEISS OZONA H. WEISS (WF)	943.08			O.R.B. 378 PG. 474
129.2	5	JOHN J. BEILSTEIN (MARRIED)	199.97		0.546 AC. ±	O.R.B. 1737 PG. 1344	716.1	485	J. BRAILEY & LOUISE T. ODHAM	4793.25			P.B. 19 PG. 76
130.9	5	SANORA HOME OWNERS ASSOCIATION, INC.	11169.12	8,471.46		O.R.B. 1272 PG. 1819	717.3	4	HARRY L. ROWAN JOAN W. ROWAN (WF)	1200.00			O.R.B. 1394 PG. 1058
133.6	586	SANFORD COURT INVESTORS, LTD	8672.59	68 AC. ±		O.R.B. 1564 PG. 599							
138.2	6	LOIS MAE PAULUCCI	8438.97	343 AC. ±		O.R.B. 1956 PG. 1515							
139.5	6	CUMBERLAND FARMS, INC.	8158.28		240 AC. ±	O.R.B. 1041 PG. 165 O.R.B. 1923 PG. 1203							
140.3	686A	JACK TAYLOR ,TRUSTEE	15,883.22	2090 AC. ±		O.R.B. 154 PG. 207							
141.1	6	MARTIN FRANCIOSO & BARBARA FRANCIOSO (WF)	1192.42		0.444 AC. ±	O.R.B. 1098 PG. 141							
142.1	6	LIL' CHAMP FOOD STORES, INC.	1369.88	237 AC. ±		O.R.B. 1141 PG. 1401							
143.2	6	ELLY TAYLOR ,TRUSTEE	2462.98	0.366 AC. ±		O.R.B. 1012 PG. 466							
144.2	6	ELLY TAYLOR ,TRUSTEE	1847.19	0.380 AC. ±		O.R.B. 910 PG. 468							
145.3	687	WALTER LENZ	1670.67	0.397 AC. ±		O.R.B. 1261 PG. 1073 O.R.B. 1374 PG. 1638							
150.2	6	JAMES E. SAPP & CAROLYN SAPP (WF)	1632.00		137 AC. ±	O.R.B. 2022 PG. 1466							
151.3	6	HARVEY C. HARRIS & FRANCES M. HARRIS (WF)	4732.41	0175 AC. ±		O.R.B. 1081 PG. 931							
152.2	6A	PELOSI	2178.46	0242 AC. ±		O.R.B. 1975 PG. 1100	733.6A	6	SANFORD COURT INVESTORS,LTD.	1799.85			O.R.B. 1564 PG. 0599
153.4	6A	MARTINEZ	1466.60	0265 AC. ±		O.R.B. 1680 PG. 1287	733.6B	5	SANFORD COURT INVESTORS,LTD.	1930.95			O.R.B. 1564 PG. 0599
154.3	6A	WILLIAM DAVID RICHARDE & ISABELLA MARIA RICHARDE (WF)	543.66	0222 AC. ±		O.R.B. 1144 PG. 592							
155.1	6A	HAYDEN W. FUTRELL & ALEEN J. FUTRELL (WF)	153.21	0231 AC. ±		O.R.B. 1974 PG. 443							
161.0	7	WALTER LENZ	44.12										
164.4	7	CARMELA C. GOULD	129.80	0237 AC. ±		O.R.B. 1189 PG.202 O.R.B. 1973 PG. 145	7395C	6	CUMBERLAND FARMS, INC.	2149.00			O.R.B. 1041 PG. 165 O.R.B. 1923 PG. 1203
165.3	7	ODELL	25.06	0185 AC. ±		O.R.B. 1881 PG. 1443	738.2	6	LOIS MAE PAULUCCI	5923.17			O.R.B. 1956 PG. 1515
166.4	7	SUN BANK	2.18	0240 AC. ±		O.R.B. 1289 PG. 1115	739.5A	6	CUMBERLAND FARMS, INC.	1601.00			O.R.B. 1041 PG. 165 O.R.B. 1923 PG. 1203
169.3	7	CARL H. LUECK & SALLY A. LUECK (WF)	200.02		0.349 AC. ±	O.R.B. 1522 PG. 1182	739.5B	6	CUMBERLAND FARMS, INC.	1593.77			O.R.B. 1041 PG. 165 O.R.B. 1923 PG.1203
103	3	SEMINOLE COUNTY	267.00			O.R.B. 1869 PG. 1454	740.3	686A	JACK TAYLOR , TRUSTEE	14713.86			O.R.B. 154 PG. 207
170	5	MARK R. LEPLA	529.00				741.1	6	MARTIN FRANCISO BARBARA FRANCISO	1537.00			
171	6A	LAKE MONROE BUS.CENTER INC.	84,071		Ø		742.1	687	LIL' CHAMP FOOD STORES, INC.	3005.00			O.R.B. 1141 PG. 1401
872	6A	PAGE SCHOOLS	5,795		9855 S.F.		743.2	6	ELLY TAYLOR , TRUSTEE	1793.23			O.R.B. 1012 PG. 466
							744.2	6	ELLY TAYLOR , TRUSTEE	1554.08			O.R.B. 910 PG. 468



## TABLE OF OWNERSHIPS

[illegible]

DATE	BY	REVISION
5-21-93	D.A.	DELETED PARCEL 711.4
5-4-93	D.A.	ADDED PARCEL 711.4
5-6-93	D.M.	CHANGED OWNERSHIP PARCELS 1082,1132,1161, 7082,752,7161
5-13-93	D.A.	REVISED AREA TAKEN PARCELS 171, 872
11-21-95	D.M.	ADDED PARCEL 711.4, 814, 841, 752A, 852A

DATE	BY	REVISION
6-15-92	D.M.	REMOVED PARCEL 802.5
10-14-92	D.M.	DELETED PARCELS 703,704,705,706,707, 710,720,722,723,726,727,728,731,732, 733,741,747,748,749,761,764,765,76

DATE	BY	REVISION
10-14-92	D.M.	REVISED PARCELS 742, 743 & 123 CREATED PARCELS 103 & 170
10-14-92	D.M.	DELETED PARCELS 1193, 7183 & 7193
1-11-93	D.M.	CHANGED OWNERS-PARCELS 103, 108.2/708.2, 1103, 1114/7114 1123/7123