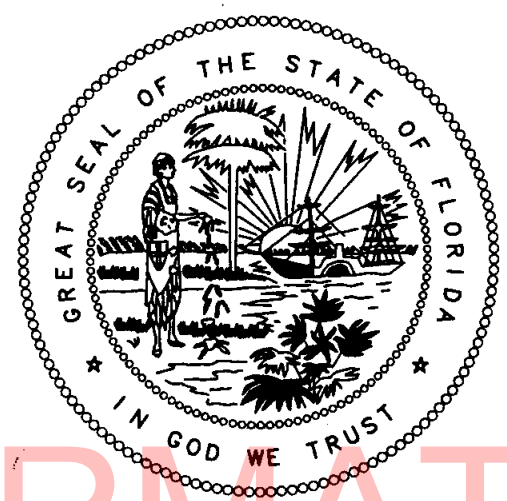
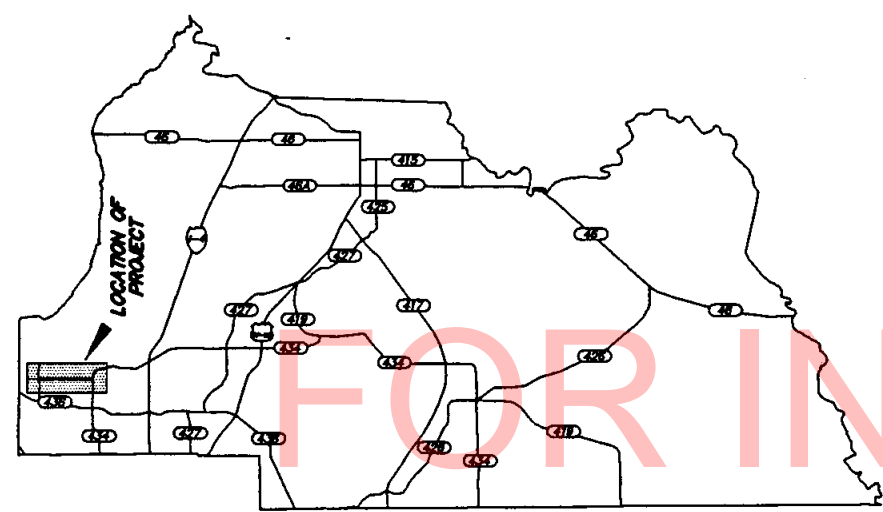


SEMINOLE COUNTY, FLORIDA

CIP-



SAND LAKE ROAD RIGHT-OF-WAY MAP & CONTROL SURVEY FROM HUNT CLUB BOULEVARD TO S.R. 434 (FOREST CITY ROAD).

RECEIVED
APR 15 2005
ENGINEERING DEPARTMENT
SEMINOLE COUNTY

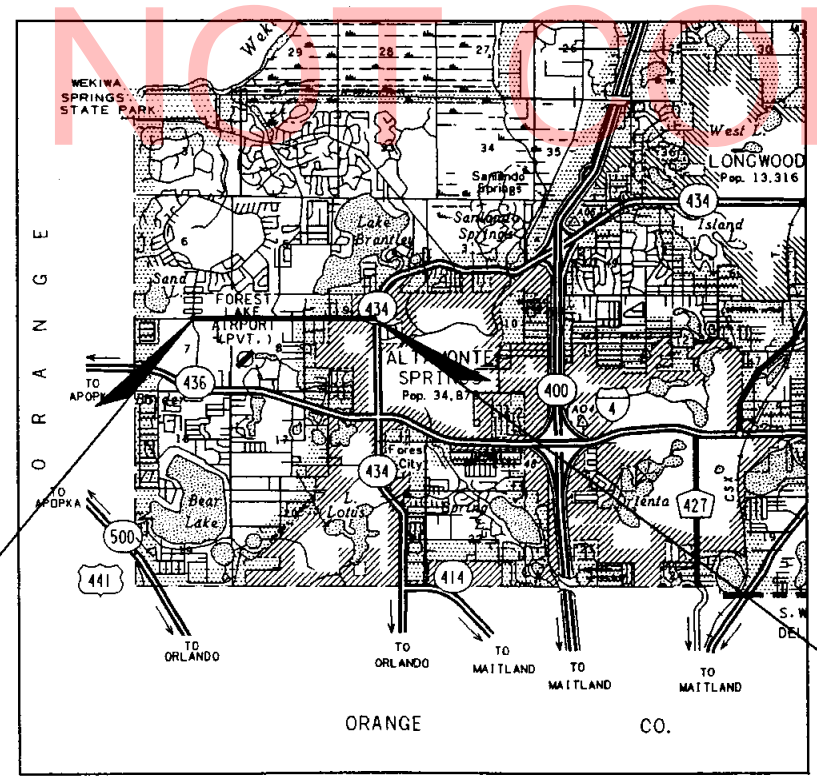
LEGEND:

- AC - ACRES
- ALUM - ALUMINUM
- B - BASELINE
- C - CHORD LENGTH
- (C) - CALCULATED DATA
- CS - CHORD BEARING
- E - CENTERLINE
- C.C.R. - CERTIFIED CORNER RECORD
- CM - CONCRETE MONUMENT
- CONC. - CONCRETE
- (D) - DEED DATA
- D.B. - DEED BOOK
- DIM - DIAMETER
- EXIST. - EXISTING
- (F) - FIELD MEASURED DATA
- FDOT - FLORIDA DEPARTMENT OF TRANSPORTATION
- FND - FOUND
- F.P.C. - FLORIDA POWER CORPORATION
- IP - IRON PIPE
- IR - IRON ROD
- IRC - IRON ROD AND CAP
- L - ARC LENGTH
- L.B. - LAND BOARD
- L.K.A. - LOCALLY KNOWN AS
- LX - LEFT
- M.B. - MAP BOOK
- MON. - MONUMENT
- N.A.D. - NORTH AMERICAN DATUM
- N.G.S. - NATIONAL GEODETIC SURVEY
- N.R. - NON-RADIAL
- O.R.B. - OFFICIAL RECORDS BOOK
- (P) - PLAT DATA
- P.B. - PLAT BOOK
- P.C. - POINT OF CURVATURE
- P.D.E. - PERMANENT DRAINAGE EASEMENT
- PR - PAGE
- P.I. - POINT OF INTERSECTION
- P.L. - PROPERTY LINE
- P.L.S. - PROFESSIONAL LAND SURVEYOR
- P.O.C. - POINT ON A CURVE
- P.O.T. - POINT ON A TANGENT
- P.R.C. - POINT OF REVERSE CURVATURE
- P.T. - POINT OF TANGENCY
- R - RADIUS
- R.N.E. - RANGE
- R.L.S. - REGISTERED LAND SURVEYOR
- R.T. - RIGHT
- R/W - RIGHT-OF-WAY
- SEC - SECTION
- S.F. - SQUARE FEET
- STA - STATION
- T - TANGENT
- T.B. - TANGENT BEARING
- T.C.E. - TEMPORARY CONSTRUCTION EASEMENT
- TWP. - TOWNSHIP
- Δ - CENTRAL ANGLE
- - CITY LIMIT LINE
- - AT

INDEX

SHEET NO.	SHEET DESCRIPTION
1	COVER SHEET
2-3	CONTROL SURVEY
4-21	RIGHT-OF-WAY MAP
22	BASILINE OF SURVEY POINT REFERENCES
23	TABLE OF OWNERSHIP

BEGIN @ SURVEY
STA. 231+16.53



END @ SURVEY
STA. 331+00.00

- GENERAL NOTES:**
- (1) THE BEARINGS SHOWN HEREIN ARE BASED ON THE FLORIDA STATE PLANE COORDINATE SYSTEM, EAST ZONE, N.A.D. 1983, N.G.S. ADJUSTMENT OF 1980, DERIVING A BEARING OF SOUTH 89°23'01" EAST, BETWEEN BEHN SURVEY STA. 231+16.53 AND P.I. STA. 300+00.00.
 - (2) PROPERTY BOUNDARIES WERE DETERMINED FROM FIELD SURVEY, PLATS OF RECORD AND RECORD TITLE.
 - (3) ATTENTION IS DIRECTED TO THE FACT THAT THIS MAP MAY HAVE BEEN REDUCED IN SIZE BY REPRODUCTION. THIS MUST BE CONSIDERED WHEN OBTAINING SCALED DATA.
 - (4) UNLESS OTHERWISE SHOWN, ALL DIMENSIONS AS SHOWN HAVE BEEN CALCULATED FROM A CLOSED FIELD TRAVERSE ON DIRECT FIELD MEASUREMENT (P).
 - (5) RIGHT-OF-WAY MONUMENTS ARE TO BE SET AFTER CONSTRUCTION OF THE PROJECT IS COMPLETE UNDER SEPARATE CONTRACT.
 - (6) THE FOLLOWING FIELD BOOKS WERE USED FOR THIS PROJECT: # 1103, 1104, 1105, 1110, 1115, AND 1116.
 - (7) NORTH-SOUTH AND EAST-WEST TIES TO LOCAL MONUMENTATION FOUND NEAR VARIOUS LAND BOUNDARY CORNERS SHOWN HEREIN ARE DETERMINED BY COORDINATE DIFFERENCE.
 - (8) SUBDIVISION LINES AND SIDE STREET RIGHT-OF-WAY LINES TIED TO THE BASELINE OF SURVEY HEREIN ARE BASED ON THE PROJECTION OF SHAD LINES, UNLESS OTHERWISE NOTED.
 - (9) STATION/OFFSET TIES TO THE RIGHT-OF-WAY BENCHMARKS SHOWN HEREIN ARE MEASURED PERPENDICULAR (90°) OR RADIAL FROM THE BASELINE OF SURVEY, UNLESS OTHERWISE NOTED.

RIGHT-OF-WAY SURVEY CERTIFICATION:

I HEREBY CERTIFY THIS RIGHT-OF-WAY SURVEY, CONSISTING OF SHEETS 1 THROUGH 23, FOR THE SPECIFIC PURPOSE OF SURVEYING, REFERENCE, DESCRIBING AND MAPPING THE RIGHT-OF-WAY CORRIDOR AND ADJOINING PROPERTIES FOR THE TRANSPORTATION FACILITY SHOWN AND DEPICTED HEREIN, THAT SAID SURVEY WAS DONE UNDER MY RESPONSIBLE CHARGE AND MEETS THE MINIMUM TECHNICAL STANDARDS FOR LAND SURVEYORS AND MAPPERS AS SET FORTH WITHIN CHAPTER 6107-6, FLORIDA ADMINISTRATIVE CODE, FLORIDA STATUTES.

DAVID A. WHITE, P.L.S.
FLORIDA REGISTRATION NO. 4044
PROFESSIONAL ENGINEERING CONSULTANTS, INC.
CERTIFICATE OF AUTHORIZATION NO. LB-3589

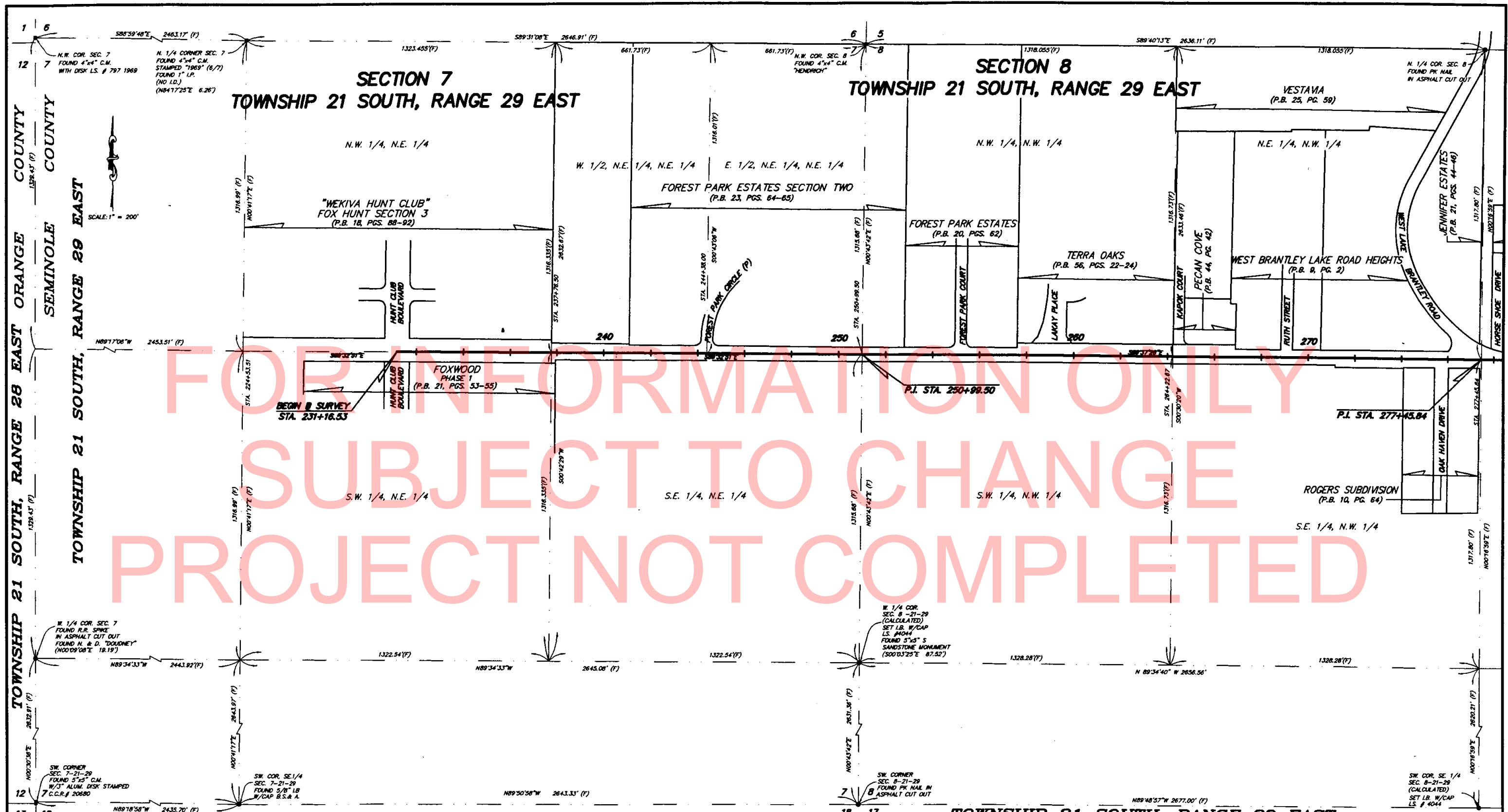
COVER SHEET

COUNTY OF SEMINOLE
ENGINEERING DEPARTMENT
RIGHT OF WAY ENGINEERING SECTION

APPROVED BY:		DESIGNED BY:		DRAWN BY:		CHECKED BY:		DATE:	
DATE:		REVISION:		BY:		DATE:		REVISION:	

PROJECT NO. SC-055
SAND LAKE ROAD
SEMINOLE COUNTY, FLORIDA

MAPS PREPARED BY:		FIELD BOOK NO.'S:	
PEC		SEE NOTES ON SHEET 1	
PROFESSIONAL ENGINEERING CONSULTANTS, INC.		SCALE: 1" = 20'	
200 EAST HARRISON STREET, ORLANDO, FLORIDA 32801		SHEET 1 OF 23	



CORNER IDENTIFICATION	STATE PLANE COORDINATES VALUES		
	NORTHING	EASTING	SCALE FACTOR
N.W. COR. SEC. 7-21-29	1581611.731	508795.644	0.99996607
N. 1/4 COR. SEC. 7-21-29	1581588.596	511258.345	0.99996524
S. 1/4 COR. SEC. 7-21-29	1578291.222	511194.959	0.99996526
S.W. CORNER SEC. 7-21-29	1578320.289	508759.518	0.99996608
N. 1/4 COR. SEC. 7-21-29	1578952.993	508782.953	0.99996607
N.W. COR. SEC. 8-21-29	1581546.376	513905.064	0.99996437
N. 1/4 COR. SEC. 8-21-29	1578915.325	513871.621	0.99996438
S.W. CORNER SEC. 8-21-29	1576284.274	513838.178	0.99996439
S. 1/4 COR. SEC. 8-21-29	1576275.671	516515.065	0.99996353
N. 1/4 COR. SEC. 8-21-29	1581531.210	516541.031	0.99996352

- SURVEYOR'S NOTES:**
- THE BEARINGS SHOWN HEREON ARE BASED ON THE FLORIDA STATE PLANE COORDINATE SYSTEM, EAST ZONE, NAD 83, A.L.S. ADJUSTMENT OF 1983, BEING A BEARING OF SOUTH 00°02'01" EAST, BETWEEN BEGIN SURVEY STA. 231+16.53 AND P.I. STA. 250+99.50.
 - THE STATE PLANE COORDINATE VALUES FOR THE P.A.P.'S AND FRACTIONAL LAND CORNERS DELINEATED HEREON ARE RELATIVE TO THE FLORIDA STATE PLANE COORDINATE SYSTEM, EAST ZONE, NAD 83, A.L.S. ADJUSTMENT OF 1983, AND ARE REFERENCED TO THE SEMINOLE COUNTY HORIZONTAL CONTROL NETWORK USING PUBLISHED VALUES FOR G.P.S. CONTROL POINTS "TERRA/OAKS" AND "TERRA/FOREST". ALL COORDINATE VALUES SHOWN CORRESPOND WITH THE U.S. SURVEY FOOT.
 - THIS SURVEY WAS PERFORMED FOR THE PURPOSE OF ESTABLISHING A BASELINE, LOCATING EXISTING MONUMENTATION AND PLACING ADDITIONAL MONUMENTS WHERE REQUIRED, SAID DATA TO BE USED IN THE PREPARATION OF RIGHT-OF-WAY MAPS.

CONTROL SURVEY CERTIFICATION:

I HEREBY CERTIFY THAT TO THE BEST OF MY KNOWLEDGE AND BELIEF THIS DRAWING, CONSISTING OF SHEETS 1 THRU 3 IS A TRUE, ACCURATE AND COMPLETE DEPICTION OF A FIELD SURVEY PERFORMED UNDER MY DIRECTION AND COMPLETED IN AUGUST, 2002. I FURTHER CERTIFY THAT SAID DRAWING IS IN COMPLIANCE WITH THE FLORIDA MINIMUM TECHNICAL STANDARDS FOR CONTROL SURVEYS AS SET FORTH IN CHAPTER 9007-8 BY THE FLORIDA BOARD OF PROFESSIONAL SURVEYORS AND MAPPERS, PURSUANT TO SECTION 472.027, FLORIDA STATUTES.

DAVID A. WHITE, P.E.
FLORIDA REGISTRATION NO. 4044
PROFESSIONAL ENGINEERING CONSULTANTS, INC.
CERTIFICATE OF AUTHORIZATION NO. LB-3088

CONTROL SURVEY

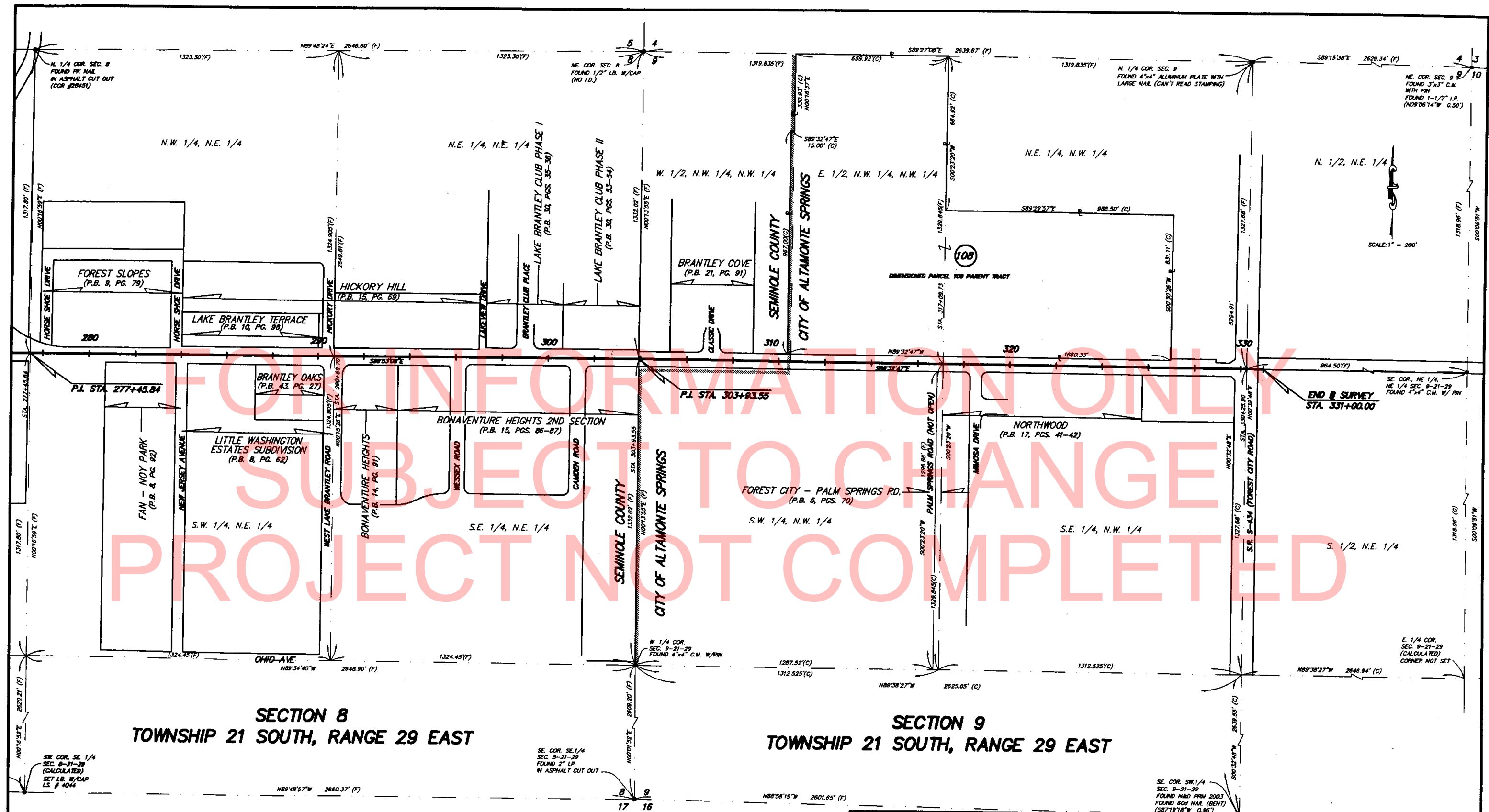
COUNTY OF SEMINOLE
ENGINEERING DEPARTMENT
RIGHT OF WAY ENGINEERING SECTION

APPROVED BY:		DESIGNED BY:		DRAWN BY:		CHECKED BY:		DATE:	
DATE:		REVISION:		BY:		DATE:		REVISION:	

SEE SHEET 1 FOR GENERAL NOTES AND LEGEND.

PROJECT NO. SC-055
SAND LAKE ROAD
SEMINOLE COUNTY, FLORIDA

MAPS PREPARED BY
PEC PROFESSIONAL ENGINEERING CONSULTANTS, INC.
250 EAST ROBINSON STREET, ORLANDO, FLORIDA 32801
FIELD BOOK NO. 5
SEE NOTES ON SHEET 1
SCALE: 1" = 20'
SHEET 2 OF 23



SECTION 8
TOWNSHIP 21 SOUTH, RANGE 29 EAST

SECTION 9
TOWNSHIP 21 SOUTH, RANGE 29 EAST

CORNER IDENTIFICATION	STATE PLANE COORDINATES VALUES		
	NORTHING	EASTING	SCALE FACTOR
S 1/4 COR. SEC. 8-21-29	1576275.671	516515.065	0.99996353
N 1/4 COR. SEC. 8-21-29	1581531.210	516541.031	0.99996352
N.E. COR. SEC. 8-21-29	1581540.143	519187.521	0.99996268
W 1/4 COR. SEC. 8-21-29	1578876.229	519176.740	0.99996268
S.E. COR. SEC. 8-21-29	1576267.122	519175.323	0.99996268
S 1/4 COR. SEC. 9-21-29	1576220.441	521776.456	0.99996188
N 1/4 COR. SEC. 9-21-29	1581514.912	521826.969	0.99996186
N.E. COR. SEC. 9-21-29	1581480.983	524452.994	0.99996106
S.E. COR. NE 1/4, NE 1/4 SEC. 9-21-29	1580162.078	524452.212	0.99996106
E 1/4 COR. SEC. 9-21-29	1578843.173	524448.430	0.99996106

CONTROL SURVEY

COUNTY OF SEMINOLE
ENGINEERING DEPARTMENT
RIGHT OF WAY ENGINEERING SECTION

APPROVED BY
DATE

REVISION BY DATE

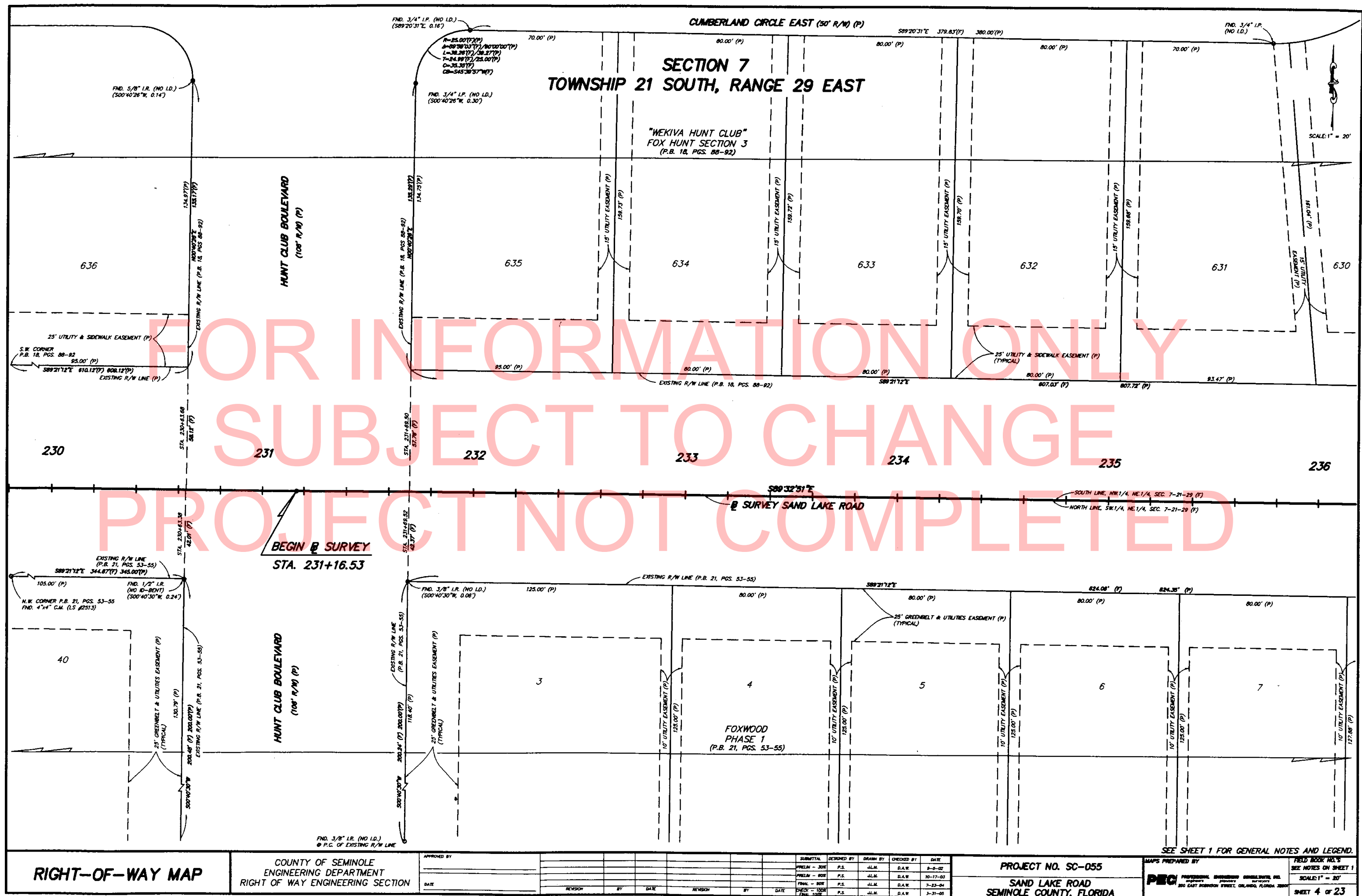
SUBMITTAL DESIGNED BY DRAWN BY CHECKED BY DATE

PROJECT NO. SC-055

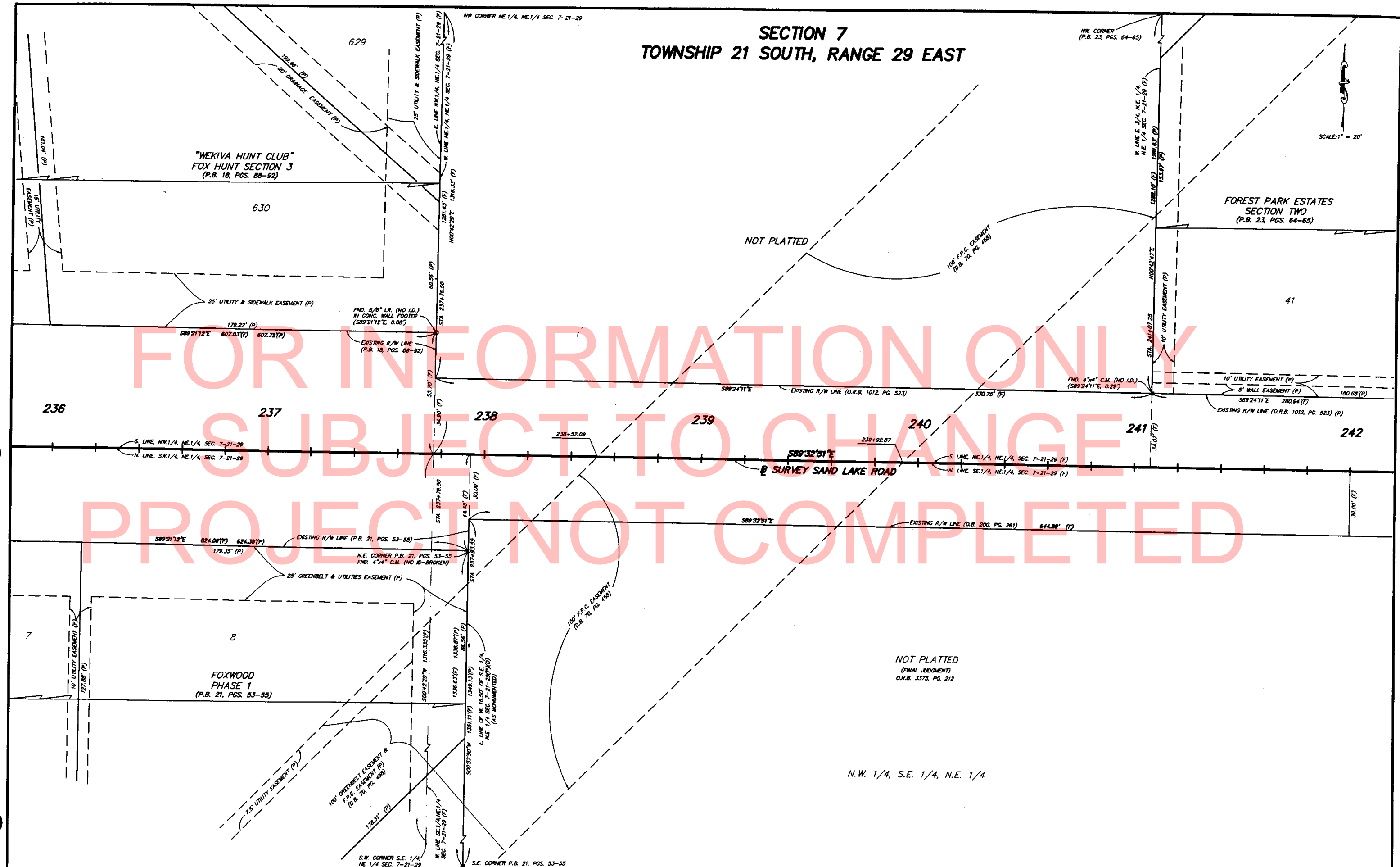
SAND LAKE ROAD
SEMINOLE COUNTY, FLORIDA

SEE SHEET 1 FOR GENERAL NOTES AND LEGEND.

MAPS PREPARED BY
PEC
PROFESSIONAL ENGINEERING CONSULTANTS, INC.
300 EAST ROBINSON STREET, ORLANDO, FLORIDA 32801
FIELD BOOK NO. 5
SEE NOTES ON SHEET 1
SCALE: 1" = 80'
SHEET 3 OF 23



SECTION 7 TOWNSHIP 21 SOUTH, RANGE 29 EAST



RIGHT-OF-WAY MAP

COUNTY OF SEMINOLE
ENGINEERING DEPARTMENT
RIGHT OF WAY ENGINEERING SECTION

APPROVED BY _____
DATE _____

REVISION	BY	DATE	REVISION	BY	DATE

SUBMITAL	DESIGNED BY	DRAWN BY	CHECKED BY	DATE
PRELIM - 30%	P.S.	J.L.M.	D.A.W.	8-5-02
PRELIM - 60%	P.S.	J.L.M.	D.A.W.	10-17-03
FINAL - 80%	P.S.	J.L.M.	D.A.W.	7-23-04
FINAL - 100%	P.S.	J.L.M.	D.A.W.	3-21-05

PROJECT NO. SC-055
SAND LAKE ROAD
SEMINOLE COUNTY, FLORIDA

SEE SHEET 1 FOR GENERAL NOTES AND LEGEND.
MAPS PREPARED BY
PEC PROFESSIONAL ENGINEERING CONSULTANTS, INC.
300 EAST ROBINSON STREET, ORLANDO, FLORIDA 32801
FIELD BOOK NO. 5
SEE NOTES ON SHEET 1
SCALE: 1" = 20'
SHEET 5 OF 23

SECTION 7
TOWNSHIP 21 SOUTH, RANGE 29 EAST

SCALE: 1" = 20'

FOREST PARK ESTATES SECTION TWO
(P.B. 23, PGS. 64-65)

41

42

1

2

3

242

243

244

245

246

247

248

SURVEY SAND LAKE ROAD

NOT PLATTED
(FINAL JUDGMENT)
O.R.B. 3375, PG. 212

NOT PLATTED
(WARRANTY DEED)
O.R.B. 2308, PG. 1979

NOT PLATTED
(WARRANTY DEED)
O.R.B. 1233, PG. 1534

N.W. 1/4, S.E. 1/4, N.E. 1/4

N.E. 1/4, S.E. 1/4, N.E. 1/4

RIGHT-OF-WAY MAP

COUNTY OF SEMINOLE
ENGINEERING DEPARTMENT
RIGHT OF WAY ENGINEERING SECTION

APPROVED BY
DATE

REVISION	BY	DATE	REVISION	BY	DATE

SUBMITTAL	DESIGNED BY	DRAWN BY	CHECKED BY	DATE
PRELIM - 30%	P.S.	J.L.M.	D.A.W.	8-9-02
PRELIM - 60%	P.S.	J.L.M.	D.A.W.	10-17-03
FINAL - 80%	P.S.	J.L.M.	D.A.W.	7-23-04
FINAL - 100%	P.S.	J.L.M.	D.A.W.	3-31-05

PROJECT NO. SC-055
SAND LAKE ROAD
SEMINOLE COUNTY, FLORIDA

SEE SHEET 1 FOR GENERAL NOTES AND LEGEND.

MAPS PREPARED BY
PEC PROFESSIONAL ENGINEERING CONSULTANTS, INC.
250 EAST ROBINSON STREET, ORLANDO, FLORIDA 32801
FIELD BOOK NO. 5
SEE NOTES ON SHEET 1
SCALE: 1" = 20'
SHEET 6 OF 23

SECTION 7
TOWNSHIP 21 SOUTH, RANGE 29 EAST

FOREST PARK ESTATES SECTION TWO
(P.B. 23, PGS. 64-65)

FOREST PARK ESTATES
(P.B. 20, PG. 62)

248

249

250

252

253

254

NOT PLATTED
(WARRANTY DEED)
O.R.B. 1233, PG. 1534

NOT PLATTED
(WARRANTY DEED)
O.R.B. 797, PG. 9

NOT PLATTED
(FOREST LAKE P.U.D.)

SECTION 8
TOWNSHIP 21 SOUTH, RANGE 29 EAST

RIGHT-OF-WAY MAP

COUNTY OF SEMINOLE
ENGINEERING DEPARTMENT
RIGHT OF WAY ENGINEERING SECTION

APPROVED BY
DATE

REVISION	BY	DATE	REVISION	BY	DATE

SUBMITTAL	DESIGNED BY	DRAWN BY	CHECKED BY	DATE
PRELIM - 30%	P.S.	J.L.M.	D.A.W.	8-8-02
PRELIM - 60%	P.S.	J.L.M.	D.A.W.	10-17-03
FINAL - 80%	P.S.	J.L.M.	D.A.W.	7-23-04
CHECK - 100%	P.S.	J.L.M.	D.A.W.	3-31-05

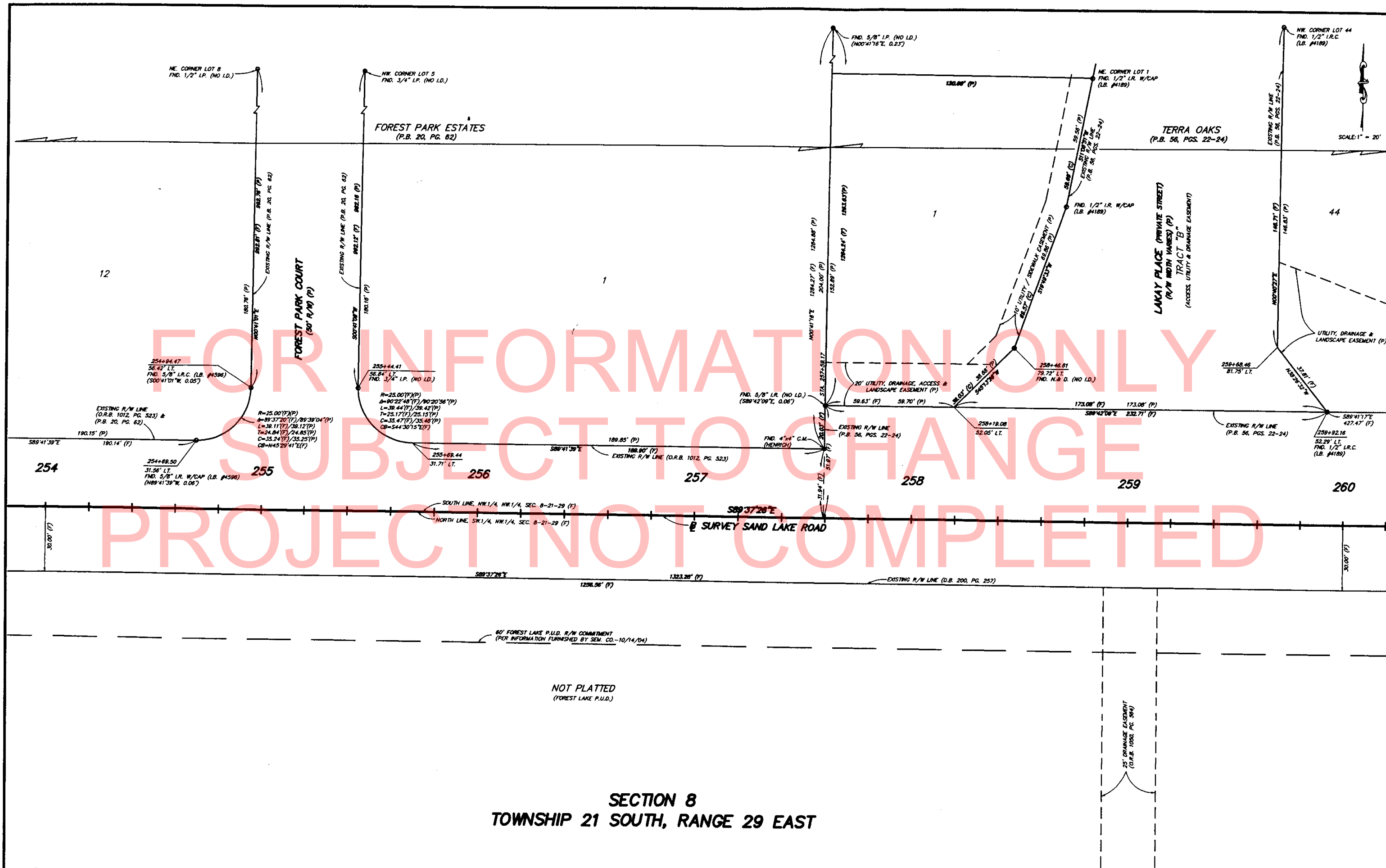
PROJECT NO. SC-055

SAND LAKE ROAD
SEMINOLE COUNTY, FLORIDA

SEE SHEET 1 FOR GENERAL NOTES AND LEGEND.

MAPS PREPARED BY
PEC PROFESSIONAL ENGINEERING CONSULTANTS, INC.
100 EAST ROBINSON STREET, ORLANDO, FLORIDA 32801

FIELD BOOK NO. 5
SEE NOTES ON SHEET 1
SCALE: 1" = 20'
SHEET 7 OF 23



SECTION 8
TOWNSHIP 21 SOUTH, RANGE 29 EAST

RIGHT-OF-WAY MAP

COUNTY OF SEMINOLE
ENGINEERING DEPARTMENT
RIGHT OF WAY ENGINEERING SECTION

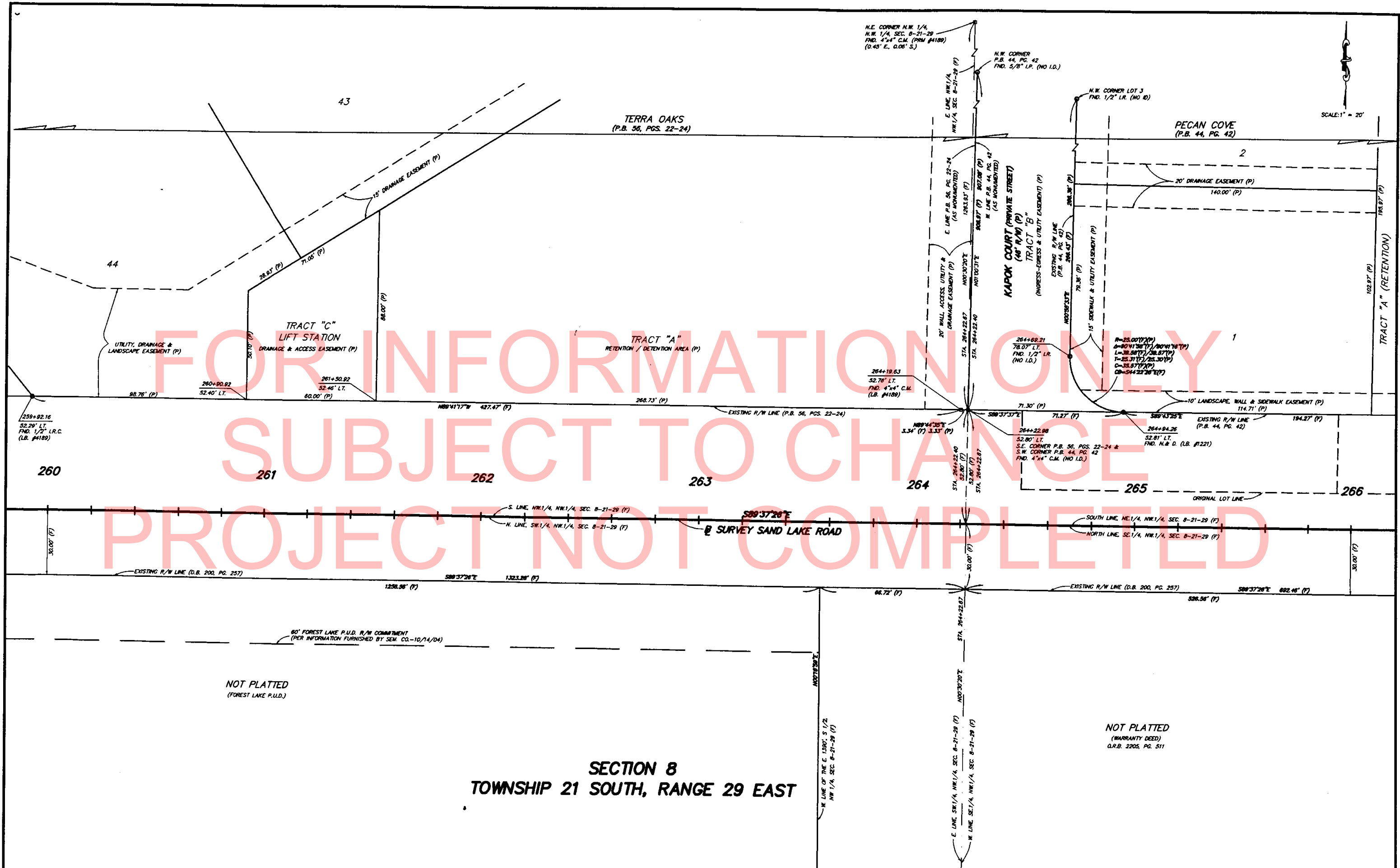
APPROVED BY		SUBMITTAL	REVISION	BY	DATE	REVISION	BY	DATE
DATE		PRELIM - 30%				PRELIM - 60%		
		FINAL - 90%				FINAL - 100%		
		CHECK - 100%				FINAL - 100%		

PROJECT NO. SC-055

SAND LAKE ROAD
SEMINOLE COUNTY, FLORIDA

SEE SHEET 1 FOR GENERAL NOTES AND LEGEND.

MAPS PREPARED BY	FIELD BOOK NO.'S
PEC	SEE NOTES ON SHEET 1
PROFESSIONAL ENGINEERING, SURVEYING, AND PLANNING	SCALE: 1" = 20'
200 EAST ROBINSON STREET, ORLANDO, FLORIDA 32801	SHEET 8 OF 23



SECTION 8
TOWNSHIP 21 SOUTH, RANGE 29 EAST

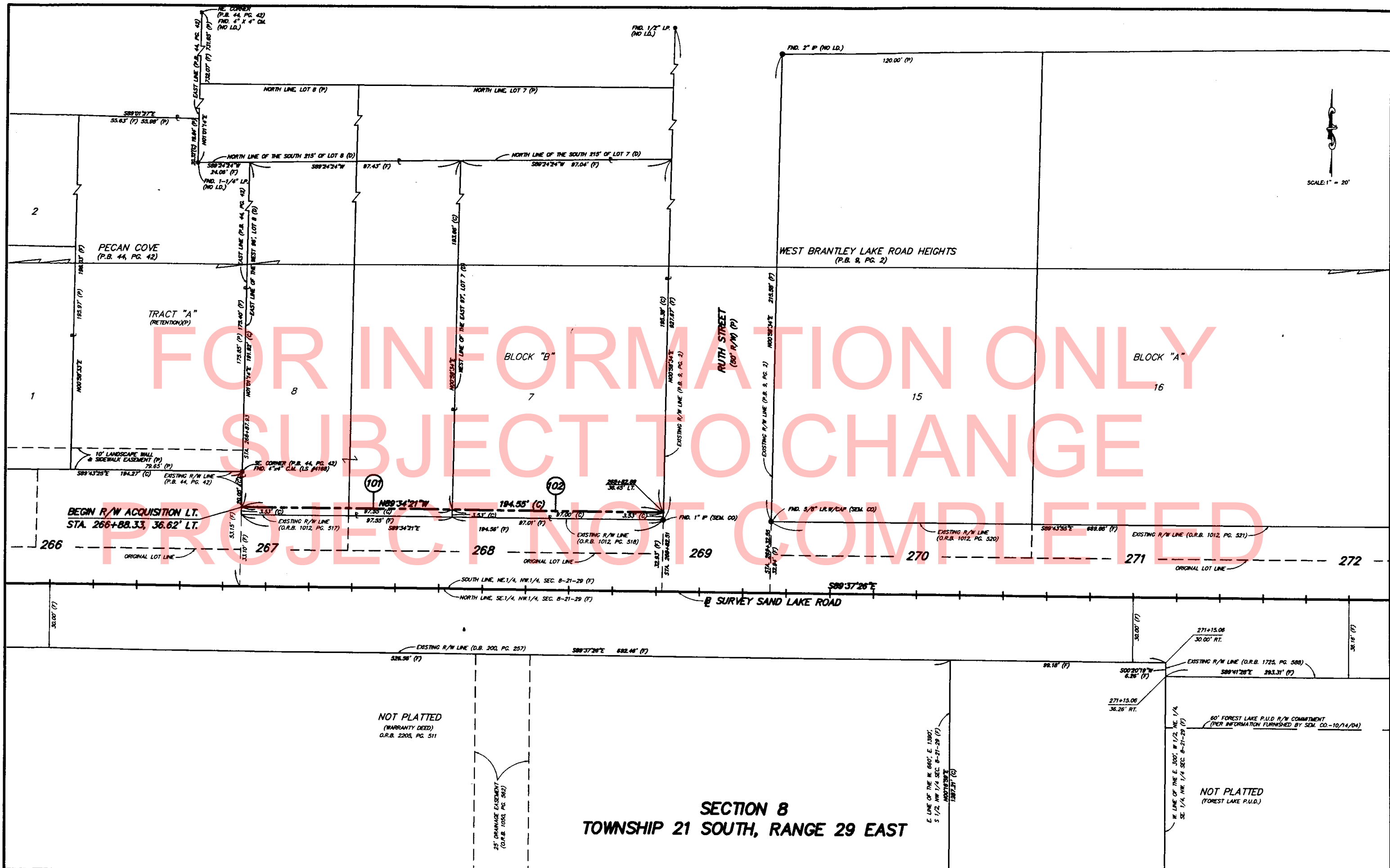
RIGHT-OF-WAY MAP

COUNTY OF SEMINOLE
ENGINEERING DEPARTMENT
RIGHT OF WAY ENGINEERING SECTION

APPROVED BY		SUBMITTAL		DESIGNED BY		DRAWN BY		CHECKED BY		DATE
DATE		REVISION	BY	DATE	REVISION	BY	DATE	REVISION	BY	DATE

PROJECT NO. SC-055
SAND LAKE ROAD
SEMINOLE COUNTY, FLORIDA

SEE SHEET 1 FOR GENERAL NOTES AND LEGEND.
MAPS PREPARED BY
PEC PROFESSIONAL ENGINEERING CONSULTANTS, INC.
200 EAST ROBINSON STREET, ORLANDO, FLORIDA 32801
FIELD BOOK NO. 5
SEE NOTES ON SHEET 1
SCALE: 1" = 30'
SHEET 9 OF 23



SECTION 8
TOWNSHIP 21 SOUTH, RANGE 29 EAST

RIGHT-OF-WAY MAP

COUNTY OF SEMINOLE
ENGINEERING DEPARTMENT
RIGHT OF WAY ENGINEERING SECTION

APPROVED BY
DATE

REVISION	BY	DATE	REVISION	BY	DATE

PROJECT NO. SC-055
SAND LAKE ROAD
SEMINOLE COUNTY, FLORIDA

MAPS PREPARED BY
PEC PROFESSIONAL ENGINEERING CONSULTANTS, INC.
200 EAST ROBINSON STREET, ORLANDO, FLORIDA 32801

FIELD BOOK NO. 5
SEE NOTES ON SHEET 1
SCALE: 1" = 20'
SHEET 10 OF 23

SECTION 8
TOWNSHIP 21 SOUTH, RANGE 29 EAST

BLOCK "A"

16

WEST BRANTLEY LAKE ROAD HEIGHTS
(P.B. 9, PG. 2)

NOT PLATTED
(WARRANTY DEED)
O.R.B. 2572, PG. 664

TRACT "C"

CURVE DATA

C-1
R=347.00'(F)
L=112.25'(F)
T=27.83'(F)
C=55.40'(F)
CB=588.06'(F)

C-2
R=347.00'(F)
L=112.25'(F)
T=27.83'(F)
C=55.40'(F)
CB=588.06'(F)

C-3
R=347.00'(F)
L=112.25'(F)
T=27.83'(F)
C=55.40'(F)
CB=588.06'(F)

JENNIFER ESTATES
(P.B. 21, PGS. 44-46)

TRACT "C"

P.I. STA. 277+45.84
SE CORNER, NE 1/4, NW 1/4, SEC. 8-21-29

NOT PLATTED
(ADMINISTRATIVE DEED)
O.R.B. 1291, PG. 521

272

273

274

275

276

277

278

S89°37'26"E

SURVEY SAND LAKE ROAD

OAK HAVEN DRIVE
(60' R/W) (P)

ROGERS SUBDIVISION
(P.B. 10, PG. 64)

NOT PLATTED
(FOREST LAKE P.U.D.)

ROGERS SUBDIVISION
(P.B. 10, PG. 64)

RIGHT-OF-WAY MAP

COUNTY OF SEMINOLE
ENGINEERING DEPARTMENT
RIGHT OF WAY ENGINEERING SECTION

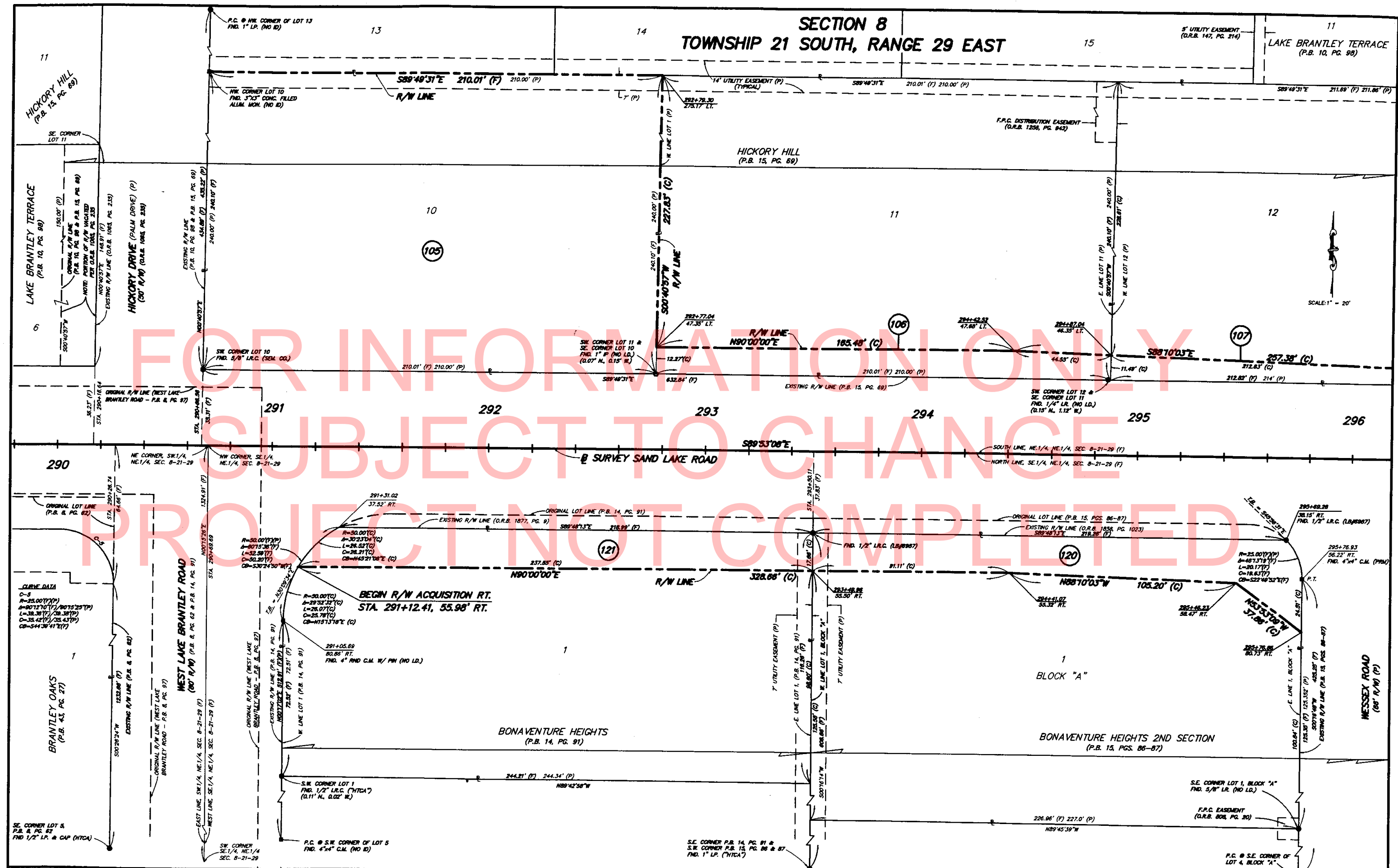
APPROVED BY	DESIGNED BY	DRAWN BY	CHECKED BY	DATE
	PRELIM - 300	P.S.	ALM	8-9-02
	PRELIM - 600	P.S.	ALM	10-17-03
	FINAL - 600	P.S.	ALM	7-23-04
	FINAL - 1200	P.S.	ALM	3-31-05
DATE	REVISION	BY	DATE	REVISION

PROJECT NO. SC-055
SAND LAKE ROAD
SEMINOLE COUNTY, FLORIDA

MAPS PREPARED BY
PEC
PROFESSIONAL ENGINEERING CONSULTANTS, INC.
200 EAST HARRISON STREET, ORLANDO, FLORIDA 32801
FIELD BOOK NO. 5
SEE NOTES ON SHEET 1
SCALE: 1" = 20'
SHEET 11 OF 23



PROJECT NO. SC-055		MAPS PREPARED BY PRC PROFESSIONAL ENGINEERING CONSULTANTS, INC. <small>engineers planners surveyors</small> 200 EAST ROBINSON STREET, ORLANDO, FLORIDA 32807	FIELD BOOK NO. 5
SAND LAKE ROAD SEMINOLE COUNTY, FLORIDA			SEE NOTES ON SHEET 1 SCALE: 1" = 20' SHEET 13 OF 23



RIGHT-OF-WAY MAP

COUNTY OF SEMINOLE
ENGINEERING DEPARTMENT
RIGHT OF WAY ENGINEERING SECTION

APPROVED BY
DATE

REVISION	BY	DATE	REVISION	BY	DATE

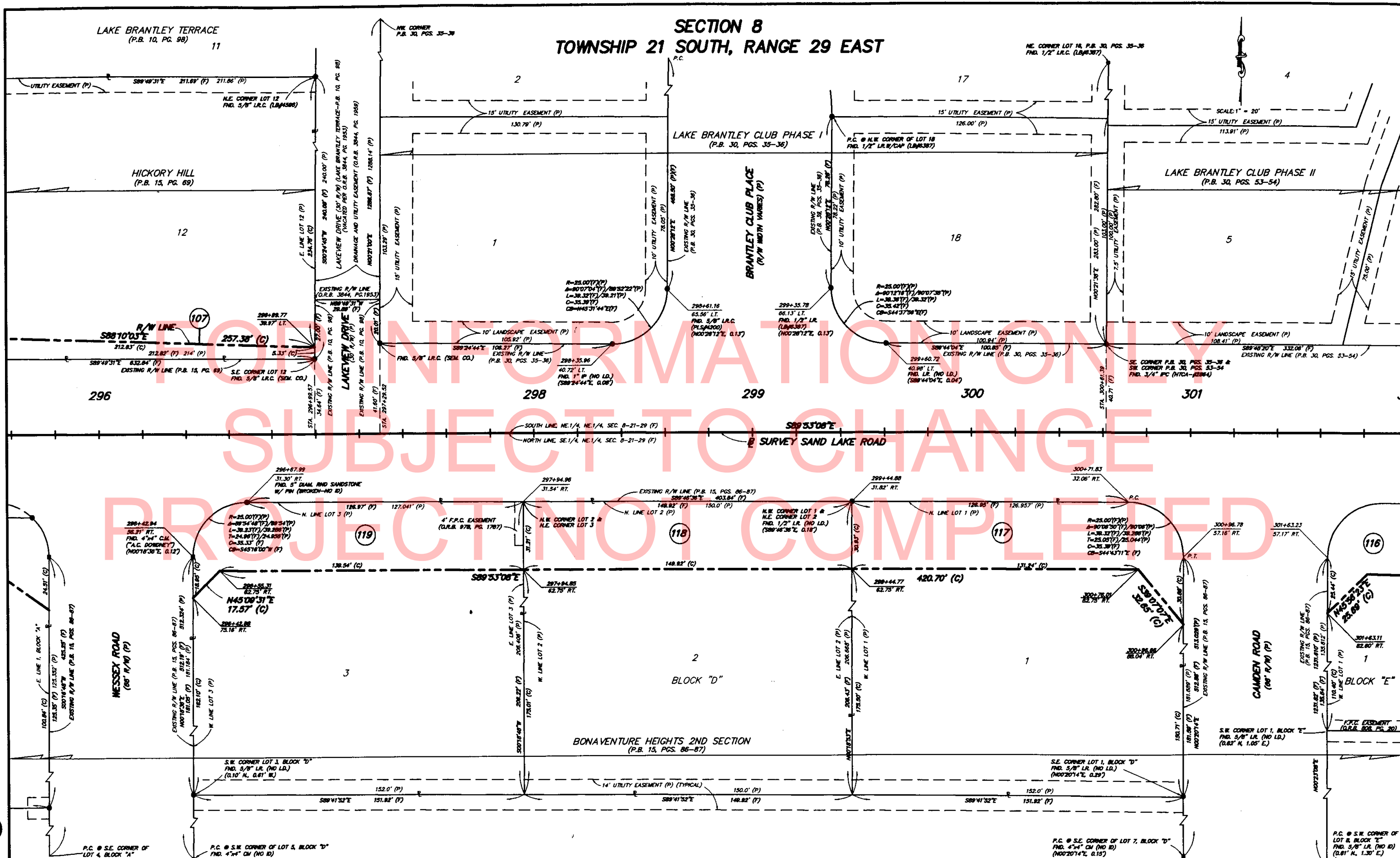
SUBMITTAL	DESIGNED BY	DRAWN BY	CHECKED BY	DATE
PRELIM - 30K	P.S.	JLM	D.A.K.	8-5-02
PRELIM - 60K	P.S.	JLM	D.A.K.	10-17-03
FINAL - 60K	P.S.	JLM	D.A.K.	7-23-04
FINAL - 100K	P.S.	JLM	D.A.K.	3-31-05

PROJECT NO. SC-055
SAND LAKE ROAD
SEMINOLE COUNTY, FLORIDA

MAPS PREPARED BY
PEG
PROFESSIONAL ENGINEERING FIRM
200 EAST ROBINSON STREET, ORLANDO, FLORIDA 32801

FIELD BOOK NO. 5
SEE NOTES ON SHEET 1
SCALE: 1" = 20'
SHEET 14 OF 23

SECTION 8
TOWNSHIP 21 SOUTH, RANGE 29 EAST



SEE SHEET 1 OF 23 FOR GENERAL NOTES & LEGEND.


RIGHT-OF-WAY MAP

COUNTY OF SEMINOLE
ENGINEERING DEPARTMENT
RIGHT OF WAY ENGINEERING SECTION

APPROVED BY _____						SUBMITTAL	DESIGNED BY	DRAWN BY	CHECKED BY	DATE
						PRELIM - 30%	P.S.	J.L.M.	D.A.W.	8-5-82
						PRELIM - 60%	P.S.	J.L.M.	D.A.W.	10-17-83
						FINAL - 90%	P.S.	J.L.M.	D.A.W.	7-23-84
DATE _____	REVISION _____	BY _____	DATE _____	REVISION _____	BY _____	CHECK - 100%	--	J.L.M.	D.A.W.	3-31-85

PROJECT NO. SC-055

SAND LAKE ROAD
SEMINOLE COUNTY, FLORIDA

MAPS PREPARED BY  PROFESSIONAL ENGINEERING CONSULTANTS, INC. engineers planners surveyors 200 EAST ROBINSON STREET, ORLANDO, FLORIDA 32801	FIELD BOOK NO.'S SEE NOTES ON SHEET 1 SCALE: 1" = 20' SHEET 15 of 23
--	---

SECTION 8
TWP. 21 S., RGE. 29 E.

SCALE: 1" = 20'

LAKE BRANTLEY CLUB PHASE II
(P.B. 30, PGS. 53-54)

BRANTLEY COVE
(P.B. 21, PG. 91)

NOT PLATTED

DETAIL
NOT TO SCALE

302 303 304 305 306 307

SURVEY SAND LAKE ROAD

SEMINOLE COUNTY

CITY OF ALTAMONTE SPRINGS

BONAVENTURE HEIGHTS 2ND SECTION
(P.B. 15, PGS. 86-87)

SECTION 9
TOWNSHIP 21 SOUTH, RANGE 29 EAST

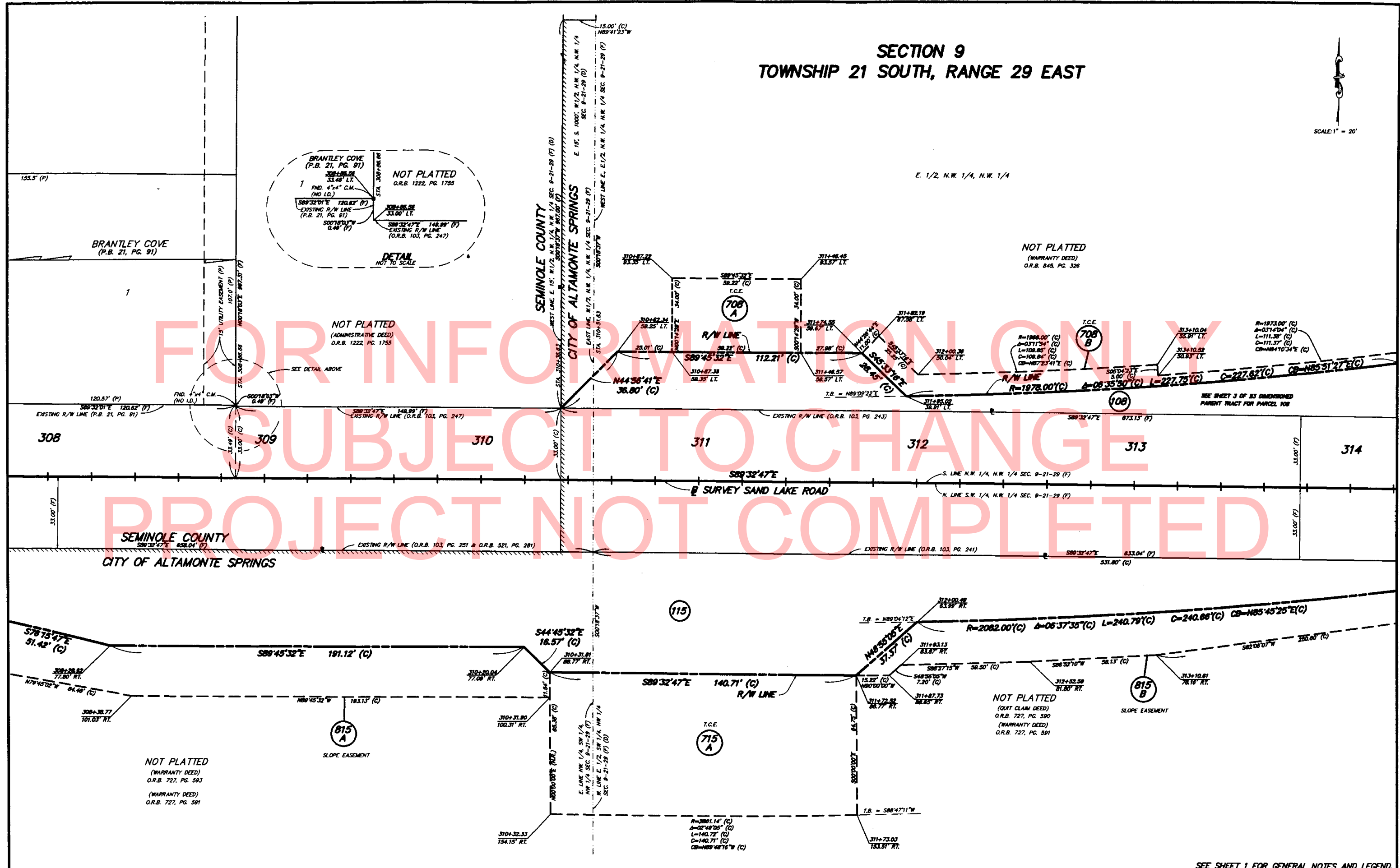
SEE SHEET 18 OF 23 FOR CONTINUATION

SEE SHEET 1 FOR GENERAL NOTES AND LEGEND.

MAPS PREPARED BY		FIELD BOOK NO.'S
PEC	PROFESSIONAL ENGINEERING CONSULTING, INC.	SEE NOTES ON SHEET 1
	engineers planners surveyors	SCALE: 1" = 20'
	300 EAST ROBINSON STREET, ORLANDO, FLORIDA 32801	SHEET 16 OF 23

SECTION 9
TOWNSHIP 21 SOUTH, RANGE 29 EAST

SCALE: 1" = 20'



RIGHT-OF-WAY MAP

COUNTY OF SEMINOLE
ENGINEERING DEPARTMENT
RIGHT OF WAY ENGINEERING SECTION

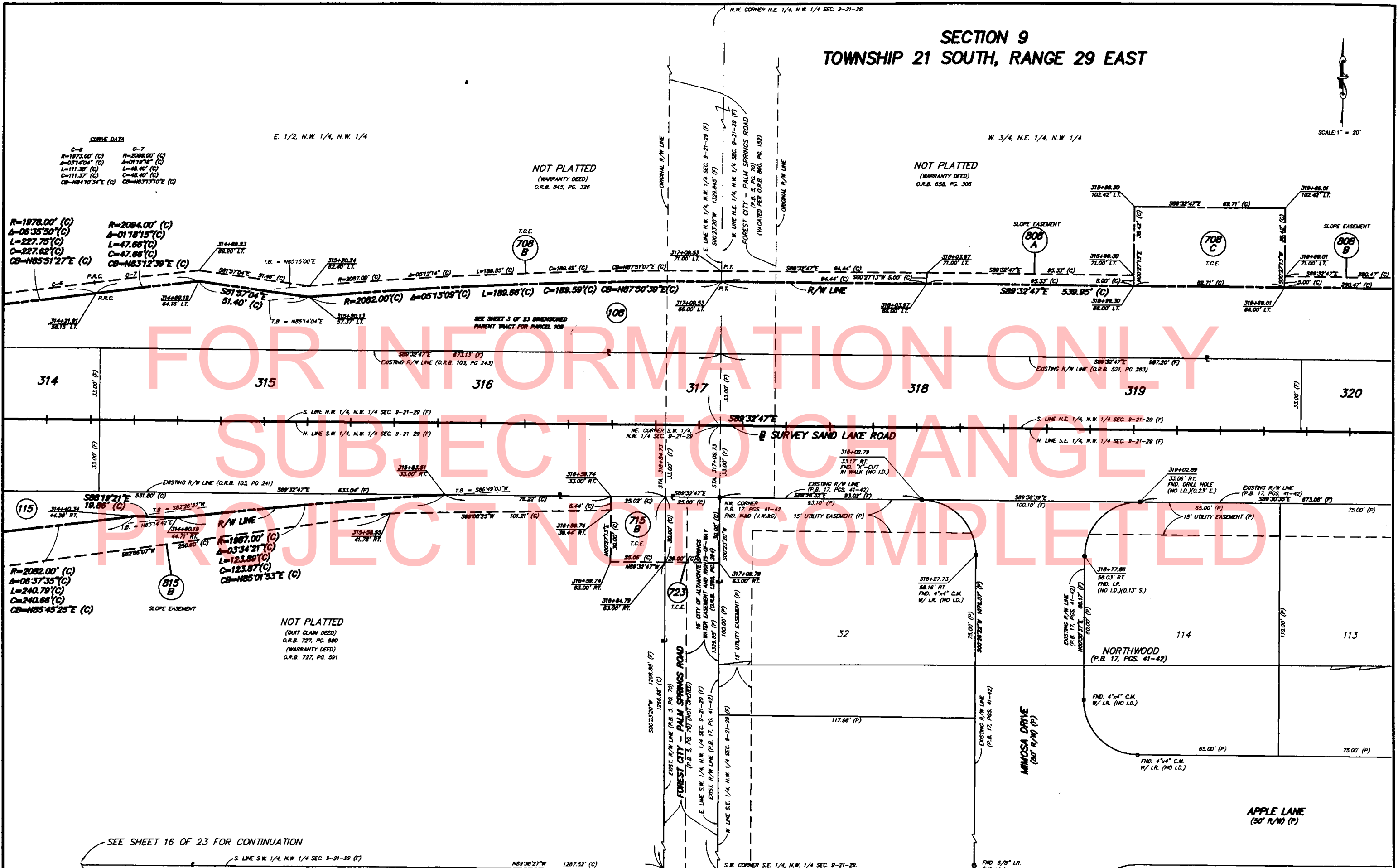
APPROVED BY		DESIGNED BY		DRAWN BY		CHECKED BY		DATE	
DATE		REVISION		BY		DATE		REVISION	

PROJECT NO. SC-055
SAND LAKE ROAD
SEMINOLE COUNTY, FLORIDA

SEE SHEET 1 FOR GENERAL NOTES AND LEGEND.
MAPS PREPARED BY
PEC PROFESSIONAL ENGINEERING CONSULTANTS, INC.
200 EAST BORDEN STREET, OKLAHOMA CITY, OKLAHOMA 73104
FIELD BOOK NO. 5
SEE NOTES ON SHEET 1
SCALE: 1" = 20'
SHEET 17 OF 23

SECTION 9
TOWNSHIP 21 SOUTH, RANGE 29 EAST

SCALE: 1" = 20'



RIGHT-OF-WAY MAP

COUNTY OF SEMINOLE
ENGINEERING DEPARTMENT
RIGHT OF WAY ENGINEERING SECTION

APPROVED BY
DATE

REVISION
BY
DATE

DESIGNED BY
DRAWN BY
CHECKED BY
DATE

PROJECT NO. SC-055
SAND LAKE ROAD
SEMINOLE COUNTY, FLORIDA

SEE SHEET 1 FOR GENERAL NOTES AND LEGEND.
MAPS PREPARED BY
FIELD BOOK NO. 5
SEE NOTES ON SHEET 1
SCALE: 1" = 20'
SHEET 18 OF 23

SECTION 9
TOWNSHIP 21 SOUTH, RANGE 29 EAST

S. 1/2, N. 1/2, S. 1/2, E. 1/4, N.E. 1/4, N.W. 1/4 &
S. 1/2, E. 1/4, N.E. 1/4, N.W. 1/4 (LESS S. 110') (D)

NOT PLATTED
(WARRANTY DEED)
O.R.B. 941, PG. 1322

END R/W ACQUISITION LT.
329+76.07, 122.00' LT.

SCALE: 1" = 20'

NOT PLATTED

50' DRAINAGE EASEMENT
(PER STATE OF FLORIDA DEPARTMENT OF TRANSPORTATION
R/W MAP, SECTION 77580-2605)

END B SURVEY
STA. 331+00.00

3
BLOCK "C"
LITTLE WEKIVA ESTATES NUMBER ONE
(P.B. 9, PG. 52)

2

RIGHT-OF-WAY MAP

COUNTY OF SEMINOLE
ENGINEERING DEPARTMENT
RIGHT OF WAY ENGINEERING SECTION

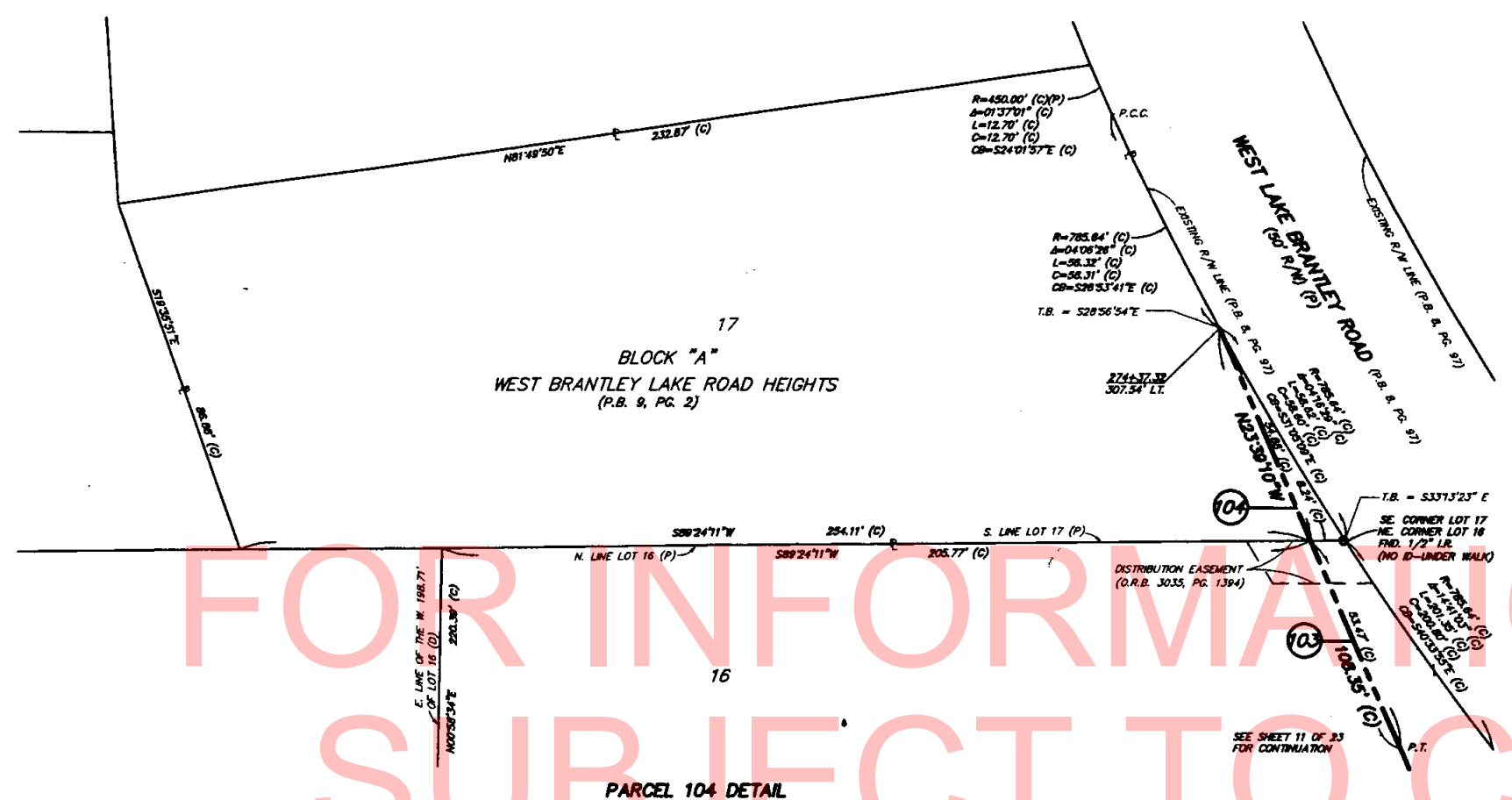
APPROVED BY
DATE

REVISION
BY
DATE

SUBMITTAL
DESIGNED BY
CHECKED BY
DATE

PROJECT NO. SC-055
SAND LAKE ROAD
SEMINOLE COUNTY, FLORIDA

SEE SHEET 1 FOR GENERAL NOTES AND LEGEND.
MAPS PREPARED BY
FIELD BOOK NO. 5
SEE NOTES ON SHEET 1
SCALE: 1" = 20'
SHEET 20 OF 23



RIGHT-OF-WAY MAP

COUNTY OF SEMINOLE
ENGINEERING DEPARTMENT
RIGHT OF WAY ENGINEERING SECTION

APPROVED BY

DATE

REVISION

BY

DATE

REVISION

BY

DATE

REVISION

BY

DATE

REVISION

BY

DATE

DESIGNED BY

DATE

REVISION

BY

DATE

REVISION

BY

DATE

REVISION

BY

DATE

REVISION

BY

DATE

DRAWN BY

DATE

REVISION

BY

DATE

REVISION

BY

DATE

REVISION

BY

DATE

REVISION

BY

DATE

CHECKED BY

DATE

REVISION

BY

DATE

REVISION

BY

DATE

REVISION

BY

DATE

REVISION

BY

DATE

DATE

REVISION

BY

DATE

REVISION

BY

DATE

REVISION

BY

DATE

REVISION

BY

DATE

DATE

REVISION

BY

DATE

REVISION

BY

DATE

REVISION

BY

DATE

REVISION

BY

DATE

DATE

REVISION

BY

DATE

REVISION

BY

DATE

REVISION

BY

DATE

REVISION

BY

DATE

DATE

REVISION

BY

DATE

REVISION

BY

DATE

REVISION

BY

DATE

REVISION

BY

DATE

DATE

REVISION

BY

DATE

REVISION

BY

DATE

REVISION

BY

DATE

REVISION

BY

DATE

DATE

REVISION

BY

DATE

REVISION

BY

DATE

REVISION

BY

DATE

REVISION

BY

DATE

DATE

REVISION

BY

DATE

REVISION

BY

DATE

REVISION

BY

DATE

REVISION

BY

DATE

DATE

REVISION

BY

DATE

REVISION

BY

DATE

REVISION

BY

DATE

REVISION

BY

DATE

DATE

REVISION

BY

DATE

REVISION

BY

DATE

REVISION

BY

DATE

REVISION

BY

DATE

DATE

REVISION

BY

DATE

REVISION

BY

DATE

REVISION

BY

DATE

REVISION

BY

DATE

DATE

REVISION

BY

DATE

REVISION

BY

DATE

REVISION

BY

DATE

REVISION

BY

DATE

DATE

REVISION

BY

DATE

REVISION

BY

DATE

REVISION

BY

DATE

REVISION

BY

DATE

DATE

REVISION

BY

DATE

REVISION

BY

DATE

REVISION

BY

DATE

REVISION

BY

DATE

DATE

REVISION

BY

DATE

REVISION

BY

DATE

REVISION

BY

DATE

REVISION

BY

DATE

DATE

REVISION

BY

DATE

REVISION

BY

DATE

REVISION

BY

DATE

REVISION

BY

DATE

DATE

REVISION

BY

DATE

REVISION

BY

DATE

REVISION

BY

DATE

REVISION

BY

DATE

DATE

REVISION

BY

DATE

REVISION

BY

DATE

REVISION

BY

DATE

REVISION

BY

DATE

DATE

REVISION

BY

DATE

REVISION

BY

DATE

REVISION

BY

DATE

REVISION

BY

DATE

DATE

REVISION

BY

DATE

REVISION

BY

DATE

REVISION

BY

DATE

REVISION

BY

DATE

DATE

REVISION

BY

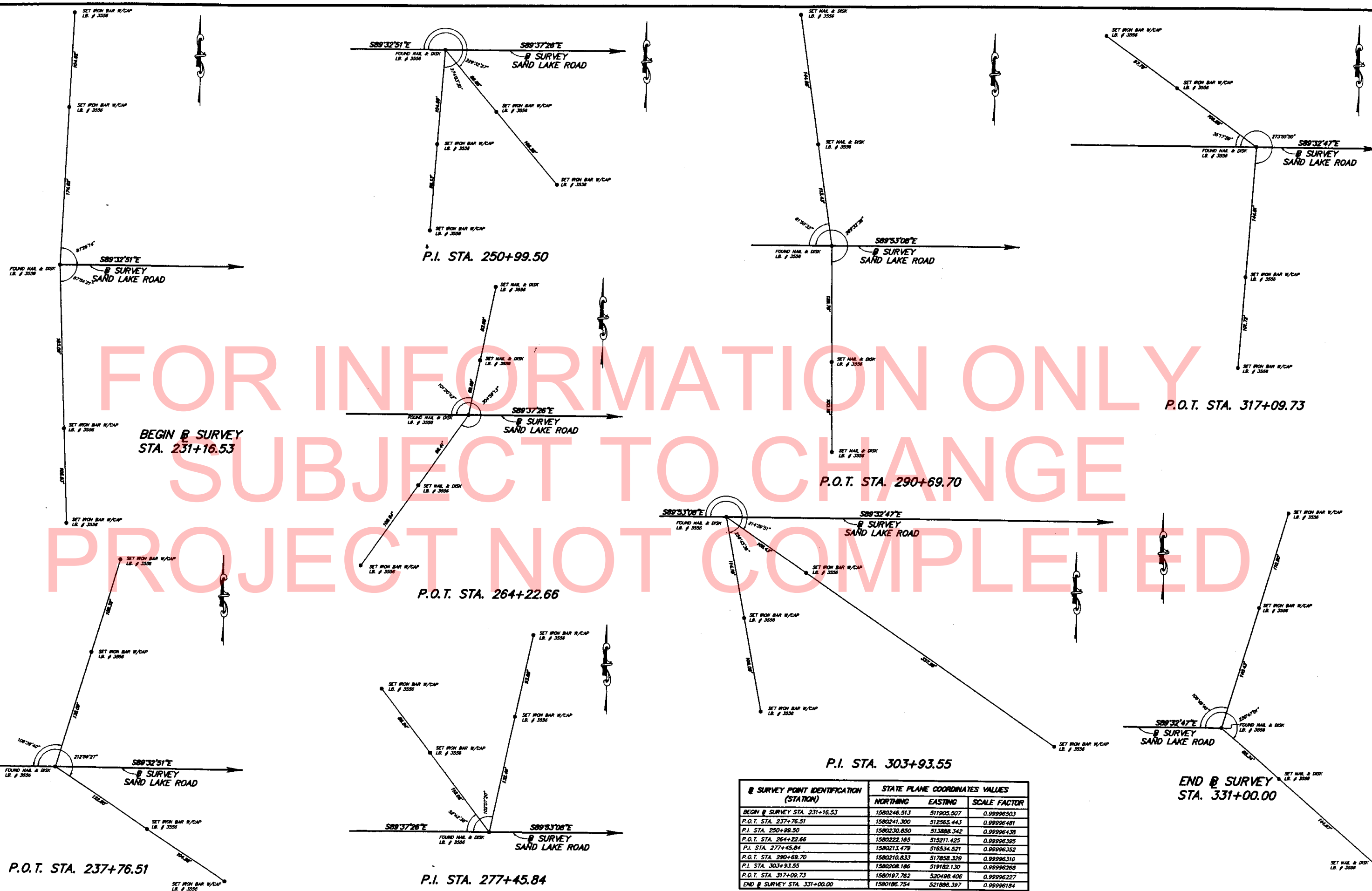
DATE

REVISION

BY

DATE

REVISION



FOR INFORMATION ONLY
SUBJECT TO CHANGE
PROJECT NOT COMPLETED

BASELINE OF SURVEY POINT REFERENCES

COUNTY OF SEMINOLE
ENGINEERING DEPARTMENT
RIGHT OF WAY ENGINEERING SECTION

APPROVED BY		DESIGNED BY		DRAWN BY		CHECKED BY		DATE	
DATE		REVISION		BY		DATE		REVISION	

B SURVEY POINT IDENTIFICATION (STATION)	STATE PLANE COORDINATES VALUES		
	NORTHING	EASTING	SCALE FACTOR
BEGIN B SURVEY STA. 231+16.53	1580246.513	511905.507	0.99996503
P.O.T. STA. 237+76.51	1580241.300	512565.443	0.99996481
P.I. STA. 250+99.50	1580230.850	513888.342	0.99996438
P.O.T. STA. 264+22.66	1580222.165	515211.425	0.99996395
P.I. STA. 277+45.84	1580213.479	516534.521	0.99996352
P.O.T. STA. 290+69.70	1580210.833	517858.329	0.99996310
P.I. STA. 303+93.55	1580208.186	519182.130	0.99996268
P.O.T. STA. 317+09.73	1580197.762	520498.406	0.99996227
END B SURVEY STA. 331+00.00	1580186.754	521808.397	0.99996184

PROJECT NO. SC-055

SAND LAKE ROAD
SEMINOLE COUNTY, FLORIDA

SEE SHEET 1 FOR GENERAL NOTES AND LEGEND.

MAPS PREPARED BY	FIELD BOOK NO.'S
PROFESSIONAL ENGINEERING CONSULTANTS, INC. 300 EAST ROBINSON STREET, ORLANDO, FLORIDA 32801	SEE NOTES ON SHEET 1
SCALE: 1" = 80'	SHEET 22 OF 23

SAND LAKE ROAD WIDENING FROM WINT CTR ROW/EAVEN TO C.B. STA. (FROST RTY. ROAD)

TABLE OF OWNERSHIPS

PARCEL NO.	SHEET NO.	NAME	AREA TAKEN	REMAINDERS		COMMENTS	RECORDING DATA	REVISION BLOCK		
				LEFT	RIGHT					
101	10	KENNETH G. SWANSON and MYRTLE H. SWANSON, his wife	344 S.F.	18,791 S.F.			R.T.C. SPECIAL WARRANTY DEED OFFICIAL RECORDS BOOK 2895, PAGE 136			
102	10	MELODY R. WEST	342 S.F.	18,868 S.F.						
103	11	JONG Y. PARK and YOUNG S. PARK, husband and wife	12,722 S.F.	1,254 AC.						
104	11 & 21	ROBERT D. READING and SANDRA K. READING, husband and wife; and WADE R. ALDERMAN and MARLENE ALDERMAN, husband and wife	187 S.F.	0.557 AC.						
105	14	WILLIAM H. SOMERS and wife, JEANETTE C. SOMERS	1,157 AC.							
106	14	RODNEY C. KANG and LINDA L. KANG, his wife	2,612 S.F.	1,088 AC.		TOTAL TAKE				
107	14,15	CORDELL ARTERBURY and CORNELL ARTERBURY	1,789 S.F.	1,129 AC.						
108	17,18,19,20	THE DISTRICT SCHOOL BOARD OF SEMINOLE COUNTY, FLORIDA	1,262 AC.	33,020 AC.						
109	20	ELLIS R. ABIDE	13,727 S.F.			TOTAL TAKE				
110	20	ISRI PERSAUD and INDRAME PERSAUD, Trustees	6,843 S.F.			TOTAL TAKE				
115	16,17,18	THE BOARD OF PUBLIC INSTRUCTION OF SEMINOLE COUNTY, FLORIDA	0.900 AC.	37,517 AC.						
116	15,16	HENRY C. PERALDO and SHIRLEY F. PERALDO, Husband and Wife	8,040 S.F.	0.683 AC.						
117	15	GLENDA R. DONOVAN	4,808 S.F.	0.607 AC.						
118	15	THELMA E. SHREWSBERRY, Trustee	4,658 S.F.	0.603 AC.						
119	15	NICOLAS GERENA AQUINO and SARAH PORTALTIN DEL GRADO, a/k/a Sarah Gerena	4,707 S.F.	0.608 AC.						
120	14	HUEY BLACKMAN and KAREN BLACKMAN, husband and wife	4,501 S.F.	0.642 AC.						
121	14	SAUL A. CHAPLIN	4,152 S.F.	0.548 AC.						
700	10	PEGAN-GOVE HOMEOWNERS ASSOCIATION, INC.				NOT USED				
708 A-D	17,18,19	THE DISTRICT SCHOOL BOARD OF SEMINOLE COUNTY, FLORIDA	9,693 S.F.			T.C.E. (AREA INCLUDES PARCEL No. 708A, 708B, 708C & 708D)				
711	20	UNITED TELEPHONE COMPANY OF FLORIDA, f/k/a The Winter Park Telephone Company	3,348 S.F.			NOT USED				
713 A-B	20	7-ELEVEN, INC., a Texas Corporation, f/k/a The Southland Corporation	1175 S.F.			T.C.E. (AREA INCLUDES PARCEL No. 713A & 713B)				
714	20	BML INVESTMENTS, a Florida General Partnership; and JDF REAL ESTATE & INVESTMENTS, LTD., a Florida limited partnership	698 S.F.			T.C.E.				
715 A-B	17,18	THE BOARD OF PUBLIC INSTRUCTION OF SEMINOLE COUNTY, FLORIDA	8,987 S.F.			T.C.E. (AREA INCLUDES PARCEL No. 715A & 715B)				
722	13,14	ALEXANDER-PLAGHOWSKI and LAURA M. PLAGHOWSKI, husband and wife				NOT USED				
723	18	CITY OF ALTAMONTE SPRINGS, FLORIDA	750 S.F.			T.C.E.				
808 A-C	18,19,20	THE DISTRICT SCHOOL BOARD OF SEMINOLE COUNTY, FLORIDA	4,838 S.F.			SLOPE EASEMENTS (AREA INCLUDES PARCEL No. 808A, 808B & 808C)				
808 D	19	THE DISTRICT SCHOOL BOARD OF SEMINOLE COUNTY, FLORIDA	658 S.F.			P.D.E.				
811	20	UNITED TELEPHONE COMPANY OF FLORIDA, f/k/a The Winter Park Telephone Company	3,348 S.F.			P.D.E.				
812	20	THE PANTRY, INC., a Delaware Corporation				NOT USED				
815 A-B	16,17,18	THE BOARD OF PUBLIC INSTRUCTION OF SEMINOLE COUNTY, FLORIDA	18,105 S.F.			SLOPE EASEMENTS (AREA INCLUDES PARCEL No. 815A & 815B)				

REVISION BY DATE

NOTE:
AC. = Acre
S.F. = Square Feet

LEGEND

PARCEL NUMBER IDENTIFICATION	TYPE USE
100-899	DEEDS OF ALL TYPES
700-799	TEMPORARY EASEMENTS
800-899	PERPETUAL EASEMENTS
900-999	LICENSE AGREEMENT

SEE SHEET 1 FOR GENERAL NOTES AND LEGEND.