

Seminole County 2045 Transportation Mobility Plan
Existing Conditions & Future Traffic Forecast Technical Memorandum

Existing Conditions & Future Traffic Forecast Technical Memorandum

Date:	December 5, 2022, Revised January 11, 2023	PPS1202220505ORL
Project name:	Seminole County 2045 Transportation Mobility Plan	200 S. Orange Avenue
Project no:	CIP# 02207078	Suite 900
Attention:	William Wharton	Orlando, FL 32801
Company:	Seminole County	United States
Prepared by:	Jacobs	T +1.407.903.5001
		F +1.407.903.5150
		www.jacobs.com

Contents

Acronyms and Abbreviations.....	iii
1. Introduction	1-1
2. Traffic Capacity Analysis	2-1
2.1 Methodology.....	2-1
2.2 Operating Standards.....	2-1
2.3 Volume to Capacity Ratios.....	2-1
3. Central Florida Regional Planning Model.....	3-1
3.1 General Overview	3-1
3.2 Applicability of the Model	3-1
4. Existing Conditions Traffic Analysis	4-1
4.1 Travel Time and Delay Study.....	4-1
4.1.1 County Roads: Signalized Intersection Approaches with LOS F	4-1
4.1.2 County Roads: Stop-Controlled Intersection Approaches with LOS F	4-3
4.1.3 County Roads: Roadway Segments with LOS F	4-3
4.1.4 State Roads: Signalized Intersection Approaches with LOS F	4-3
4.1.5 State Roads: Stop-Controlled Intersection Approaches with LOS F	4-4
4.1.6 State Roads: Roadway Segments with LOS F	4-4
4.2 Capacity Analysis.....	4-4
5. Future-Year Roadway Capacity Analyses.....	5-1
5.1 2030 Capacity Analysis.....	5-1
5.2 2035 Capacity Analysis.....	5-5
5.3 2045 Capacity Analysis.....	5-9
6. Future Roadway Capacity Deficiencies	6-1
7. References	7-1

Appendixes

Appendix A Existing Conditions and Future Forecasted Level of Service and Volume to Capacity Tables

Appendix B Volume to Capacity Ratio Maps

Appendix C Travel Time and Delay Study – LOS F Segments

Tables

Table 3-1. Traffic Analysis Zone 7077, Comparison of 2015 and 2045 Residential Parameters	3-2
Table 3-2. Traffic Analysis Zone 7077, Comparison of 2015 and 2045 Hotel, Industrial, Commercial, and Service Parameters	3-2
Table 3-3. Traffic Analysis Zone 7191, Comparison of 2015 and 2045 Residential Parameters	3-4
Table 3-4. Traffic Analysis Zone 7191, Comparison of 2015 and 2045 Hotel, Industrial, Commercial & Service Parameters	3-4
Table 4-1. 2022 County LOS with V/C Ratios for 2045 LOS F Roadway Segments – County Roads	4-5
Table 4-2. 2022 County LOS F with V/C Ratios with no Forecasted Deficiency – County Roads	4-7
Table 4-3. 2022 County LOS with V/C Ratios for 2045 LOS F Roadway Segments – State Roads	4-8
Table 5-1. 2030 County LOS with V/C Ratios for 2045 LOS F Roadway Segments – County Roads	5-1
Table 5-2. 2030 County LOS with V/C Ratios for 2045 LOS F Roadway Segments – State Roads	5-4
Table 5-3. 2035 County LOS with V/C Ratios for 2045 LOS F Roadway Segments – County Roads	5-6
Table 5-4. 2035 County LOS with V/C Ratios for 2045 LOS F Roadway Segments – State Roads	5-8
Table 5-5. 2045 County LOS F with V/C Ratios – County Roads	5-10
Table 5-6. 2045 County LOS F with V/C Ratios – State Roads	5-12
Table 6-1. 2030, 2035, and 2045 County LOS Summary	6-1
Table 6-2. 2045 County Levels of Service Summary	6-1
Appendix A. Existing Conditions and Future Forecasted Level of Service (LOS) and Volume to Capacity (V/C) Tables	A-1
Appendix B Volume to Capacity Ratio Maps	B-1
Appendix C. Travel Time and Delay Study – LOS F Segments	C-1

Figures

Figure 3-1. Future Land Use Map – Development, Traffic Analysis Zone 7077	3-1
Figure 3-2. Central Florida Regional Planning Model (CFRPM), Version 7 – 2045, Traffic Analysis Zone 7077	3-3
Figure 3-3. Future Land Use Map – Development, Traffic Analysis Zone 7191	3-3
Figure 3-4. Central Florida Regional Planning Model (CFRPM), Version 7 – 2045, Traffic Analysis Zone 7191	3-5

Acronyms and Abbreviations

AADT	Average Annual Daily Traffic
CFRPM	Central Florida Regional Planning Model
EB	eastbound
FDOT	Florida Department of Transportation
I-4	Interstate 4
LOS	Level of Service
NB	northbound
ROW	right of way
SB	southbound
SR	State Road
WB	westbound
V/C	volume to capacity

1. Introduction

This memorandum describes and analyzes the existing conditions of traffic capacity and travel time and delay within Seminole County (hereinafter, “the County”). It also includes the traffic forecast for 2030, 2035, and 2045 with a discussion of overall future conditions of the roadway network within the County. Included in this document are the background of the traffic capacity analysis process, the description of the Central Florida Regional Planning Model (CFRPM), existing conditions (2022) traffic analysis, future-year analyses including 2030, 2035, and 2045, and a further discussion of the future-year roadway deficiencies. All supporting data are provided in the appendixes.

Data sources used to evaluate the travel time and delay and existing traffic capacity and to identify future deficiencies came from the CFRPM, the County and its seven cities, MetroPlan Orlando, and Florida Department of Transportation (FDOT).

2. Traffic Capacity Analysis

2.1 Methodology

A traffic-count-based analysis was conducted using the traffic count data and forecasted traffic count data that was generated from the CFRPM, Version 7. The existing conditions data for 2022 were available as part of the Traffic Counts GIS layer that is provided on the Seminole County website (Seminole County n.d.). The future-year volumes for 2030, 2035, and 2045 were forecasted as part of the CFRPM output. These forecasted traffic volumes are included as part of Appendix A, Existing Conditions and Future Forecasted Level of Service and Volume to Capacity Tables.

Both analyses for the existing and future-year conditions were conducted based on traffic capacity using actual and forecasted traffic counts to generate a level of service (LOS) and volume to capacity (V/C) ratio for each roadway segment analyzed. The LOS scale represents a qualitative assessment of the traffic conditions with an assigned grade based on several traffic-related factors that are represented by different letters. The V/C ratio is a quantitative assessment of the traffic conditions based on number of vehicles in relation to the capacity of the roadway segment.

For this *Existing Conditions and Future Traffic Forecast Technical Memorandum*, capacity analysis summaries were provided for existing (2022), 2030, 2035, and 2045 planning horizons. The facilities summarized are only the facilities with a future deficiency (LOS F) in 2045. All future deficient facilities are included as a way to prioritize improvements based on the need for improvements over the planning horizons.

2.2 Operating Standards

The Generalized Service Volume Tables from the FDOT 2020 *Quality/Level of Service Handbook* (FDOT 2020) were used as a basis for the LOS determinations. The FDOT Generalized Service Volume tables are specified per facility type and area type. Adjustments were made for County facility capacities based on the *Seminole County Comprehensive Plan Transportation Element* (Seminole County n.d.), which determined roadway specific thresholds for capacity that were adhered to in determining capacity deficiencies.

2.3 Volume to Capacity Ratios

The V/C ratio is a comparison of the measured volume of traffic on a roadway in relation to the capacity of the roadway. This value represents the usage of a facility and is an effective way to identify capacity improvement needs. Prioritization of improvements can also be made based on the magnitude of the V/C ratio. Maps 1 through 4 represent the Countywide ratios for facilities at 0.95 and greater for 2022 (existing), 2030, 2035, and 2045, respectively (refer to Appendix B, Volume to Capacity Ratio Maps).

The maps are color-coded as follows:

- Yellow represents those facilities that are within 5% or at capacity, with V/C ratios between 0.95 and 1.00.
- Orange represents those facilities that are above capacity from 1 to 30%, with V/C ratios between 1.01 and 1.30.
- Red represents those facilities that are over capacity by greater than 30%, with V/C ratios higher than 1.30.

3. Central Florida Regional Planning Model

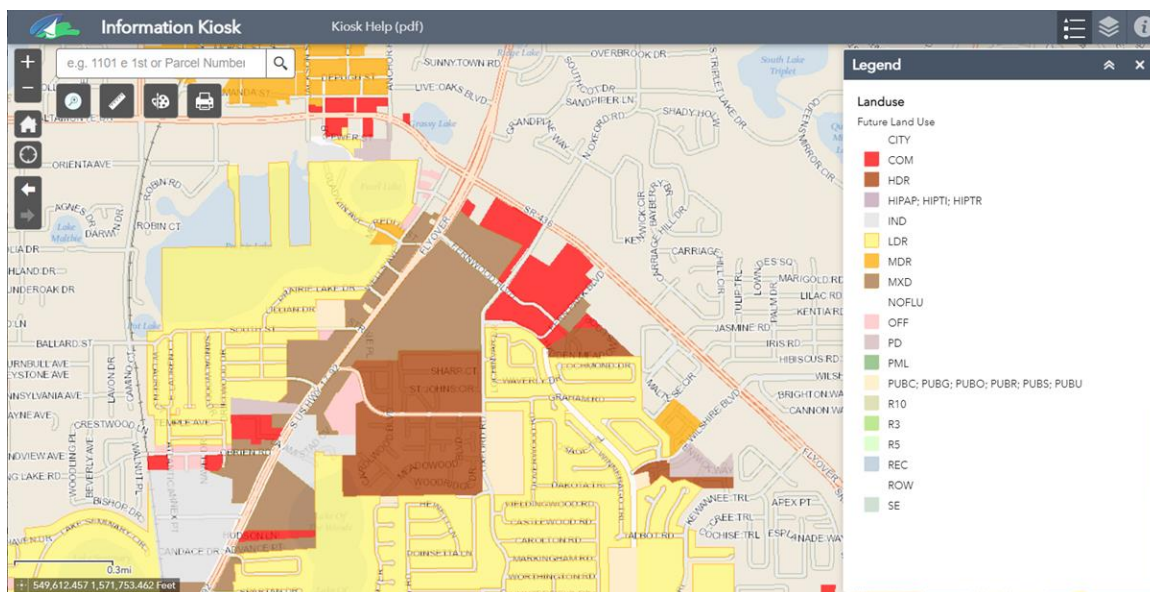
3.1 General Overview

The CFRPM is an FDOT-provided resource for traffic modeling within the nine-county FDOT District 5 area, which includes Seminole County. Input for the model is gathered from multiple municipal and commercial sources to make the model as robust as possible. Version 7 of the CFRPM is the officially adopted model for all five of the Metropolitan Planning Organizations in FDOT District 5, including MetroPlan Orlando, which services Seminole, Orange, and Osceola Counties. The model has a base year of 2015 and a 2045 horizon year with 5-year interim horizons. The CFRPM was developed with Bentley CUBE Voyager. The Caliper TransCAD version is scheduled to be adopted in December 2022 starting with CFRPM Version 7.2.

3.2 Applicability of the Model

CFRPM Version 7 is largely consistent with the Seminole County Comprehensive Plan Future Land Use Element. The land use data for future projects has been distributed into Traffic Analysis Zones (TAZs) that represent the socioeconomic characteristics of a given location. This has been done in a manner that is in line with the Seminole County Future Land Use Map. However, in some cases, there are some TAZs that do not include new developments as shown on Figure 3-1 because no change in population data is expected.

Figure 3-1. Future Land Use Map – Development, Traffic Analysis Zone 7077



For example, in the case of TAZ 7077, the 2045 socioeconomic data are nearly the same as the 2015 socioeconomic data. Table 3-1 shows the comparison of the 2015 and 2045 residential parameters data. There is no change in the population data, and the data are consistent with the Future Land Use Map shown as Figure 3-1.

Table 3-1. Traffic Analysis Zone 7077, Comparison of 2015 and 2045 Residential Parameters

TAZ	YEAR	Single-Family Dwelling Units	Single-Family Population	Multi-Family Dwelling Units	Multi-Family Population	Total Population
7077	2015	0	0	272	582	582
7077	2045	0	0	272	582	582
					0%	0

Table 3-2 shows the comparison of the 2015 and 2045 hotel, industrial, commercial, and service parameters data. There is only a relatively small change in the employment data, though the Future Land Use Map shown as Figure 3-1 depicts a more significant shift in land use for these purposes.

Table 3-2. Traffic Analysis Zone 7077, Comparison of 2015 and 2045 Hotel, Industrial, Commercial, and Service Parameters

TAZ	YEAR	Hotel and Motel Dwelling Units	Hotel and Motel Percent Occupancy	Hotel and Motel Population	Industrial Employment	Commercial Employment	Service Employment	Total Employment
7077	2015	0	0	0	1	255	589	845
7077	2045	0	0	0	1	262	608	871
							3.1%	26

Only a nominal commercial land use increase has been included in the CFRPM despite the increase in commercial development that is indicated on the Future Land Use Map. Figure 3-2 shows the view of TAZ 7077 from the CFRPM display for reference.

There are also several TAZs that include new development in the CFRPM, even with no new development indicated on the Future Land Use Map. New land use data were included in the CFRPM. An example of this is represented in the TAZ shown on Figure 3-3, which also shows that there was no new development in TAZ 7191 per the Future Land Use Map.

Seminole County 2045 Transportation Mobility Plan Existing Conditions & Future Traffic Forecast Technical Memorandum

Figure 3-2. Central Florida Regional Planning Model (CFRPM), Version 7 – 2045, Traffic Analysis Zone 7077

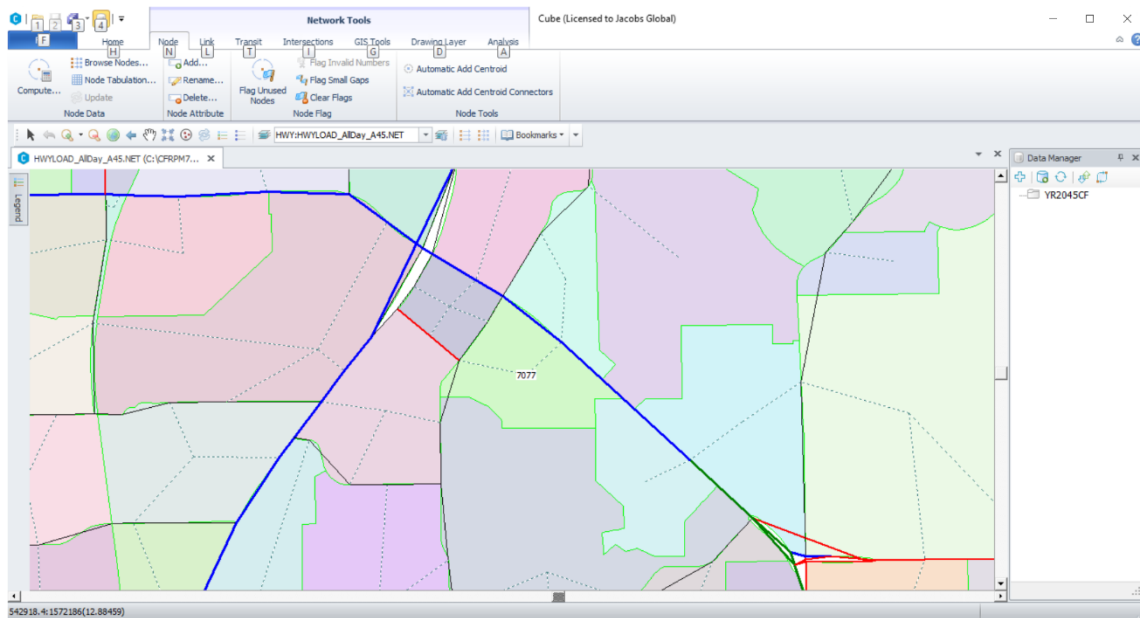
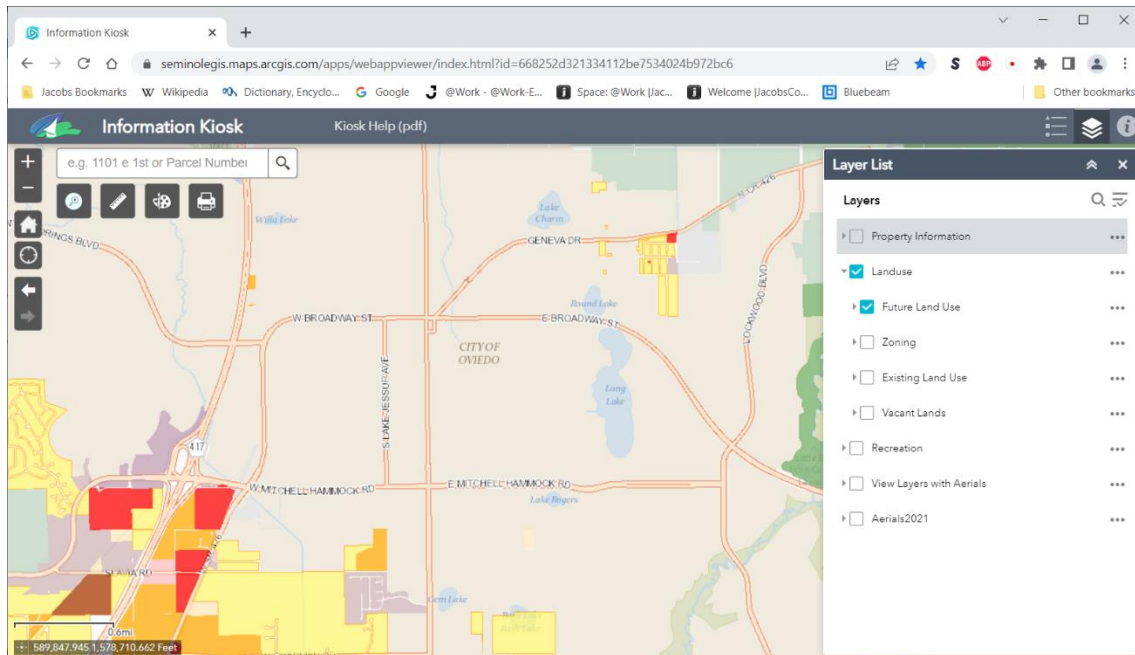


Figure 3-3. Future Land Use Map – Development, Traffic Analysis Zone 7191



Seminole County 2045 Transportation Mobility Plan

Existing Conditions & Future Traffic Forecast Technical Memorandum

Table 3-3 shows an increase in residential parameters in TAZ 7191, though there was no future development indicated within the zone on the Future Land Use Map.

Table 3-3. Traffic Analysis Zone 7191, Comparison of 2015 and 2045 Residential Parameters

TAZ	YEAR	Single-Family Dwelling Units	Single-Family Population	Multi-Family Dwelling Units	Multi-Family Population	Total Population
7191	2015	124	342	402	986	1,328
7191	2045	168	463	804	1,970	2,433
					83.2%	1,105

Table 3-4 shows a more than 500% increase in hotel, industrial, commercial, and service parameters in TAZ 7191. The increase comes from the employment increases in the zone, which are not represented on the Future Land Use Map,

Table 3-4. Traffic Analysis Zone 7191, Comparison of 2015 and 2045 Hotel, Industrial, Commercial & Service Parameters

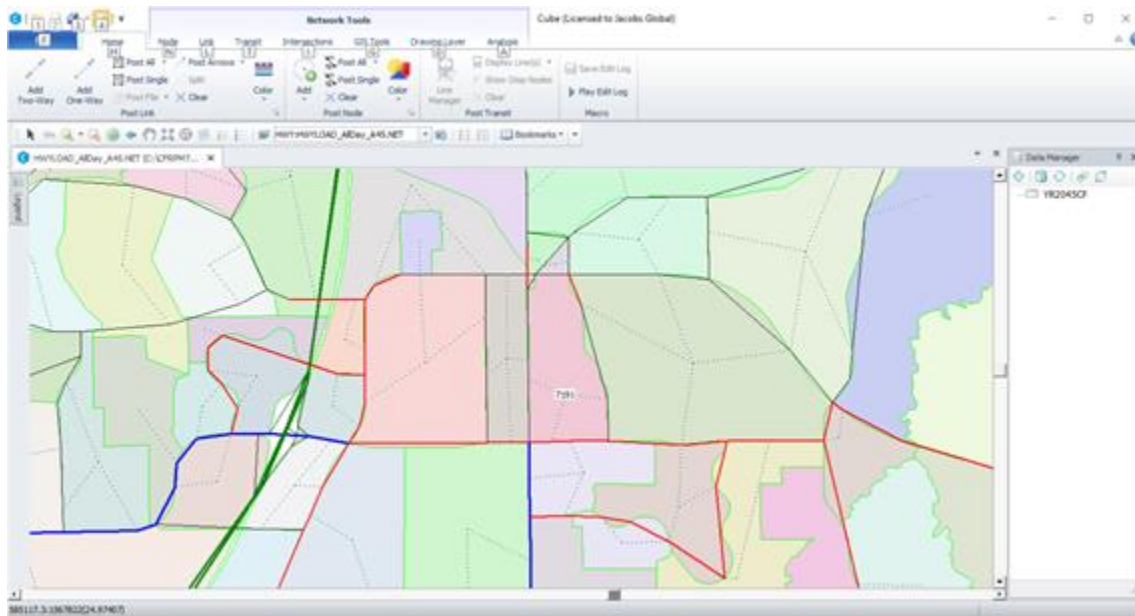
TAZ	YEAR	Hotel and Motel Dwelling Units	Hotel and Motel Percent Occupancy	Hotel and Motel Population	Industrial Employment	Commercial Employment	Service Employment	Total Employment
7191	2015	0	0	0	56	37	324	417
7191	2045	0	0	0	88	579	1,931	2,598
							523%	2,181

Figure 3-4 shows the view of TAZ 7191 from the CFRPM display for reference.

Centroid connectors connect the land use data contained in a TAZ to the roadway network. Also noted in the analysis of the CFRPM, the centroid connectors have not been changed from the 2015 base year network (as part of the CFRPM) to the 2045 cost feasible network. This indicates that if any new access points are planned as part of future development, they may not be correctly represented in the 2045 model because they are built on the base year network.

Overall, the differences between the Future Land Use Map and the CFRPM are do not affect the analysis at a Countywide level but should be considered where major redevelopment is proposed in the future.

Figure 3-4. Central Florida Regional Planning Model (CFRPM), Version 7 – 2045, Traffic Analysis Zone 7191



4. Existing Conditions Traffic Analysis

4.1 Travel Time and Delay Study

This section summarizes a portion of the existing conditions (2022) traffic analysis that was conducted with travel time and delay data. This analysis assumes that the effects of the COVID-19 pandemic have subsided, and 2022 traffic conditions represent typical conditions. The travel time and delay data were provided by the County in the form of a report that summarizes the 2022 conditions on a directional and peak hour basis (Luke Transportation Engineering Consultants 2022). The study analyzed data for a total of 342.6 miles of roadways in the County. Included in the total mileage were 8 state roads that totaled 134.4 miles and 74 County roads that totaled 208.2 miles.

Determining the LOS on a roadway segment for the 2022 Seminole County Travel Time and Delay Study followed FDOT guidance of a two-tier, average-travel-speed-based LOS, which differs from capacity-based LOS. The tiers define LOS grades based on higher posted speeds of at least 40 miles per hour and lower posted speeds of no greater than 35 miles per hour. For this analysis, roadway segments with an LOS F were reviewed. That data are included as Appendix C, Travel Time and Delay Study – LOS F Segments.

The analyzed roadway segments with a traffic control device present at the downstream end of the segment were assumed to have its LOS be influenced by the traffic control device. These intersections are recommended to be further analyzed and considered as needs to improve the intersection roadway conditions.

Roadway segments without traffic control devices were compared to those segments in the capacity analysis. This was conducted to demonstrate which roadway segments were identified in both the travel time and delay and capacity analyses. Those roadway segments that were identified only by the travel time and delay analysis are recommended to be further analyzed and considered as needs to improve roadway conditions.

Direction of travel for all locations were abbreviated as part of the analysis as follows:

- EB = eastbound
- NB = northbound
- SB = southbound
- WB = westbound

4.1.1 County Roads: Signalized Intersection Approaches with LOS F

County signalized intersection approaches that operated as an LOS F based on the travel time and delay are listed in the following text. The 70 signalized intersection approaches listed represent 26 facilities and 58 intersections. These locations are recommended to be reviewed for intersection improvements with the goal of improving traffic conditions.

- | | |
|--|--------------------------------|
| 1. Airport Boulevard/MLK Jr. Boulevard EB at CR 46A/25th St. | 6. CR 15 SB at CR 46A E |
| 2. Airport Boulevard/MLK Jr. Boulevard WB at CR 46A/25th St. | 7. CR 15 SB at CR 46A W |
| 3. Airport Boulevard/MLK Jr. Boulevard WB at Old Lake Mary Rd. | 8. CR 15 SB at Lake Mary Blvd. |
| 4. Airport Boulevard/MLK Jr. Boulevard WB at US 17/92 | 9. CR 419 EB at CR 426 |
| 5. CR 15 NB at CR 46A E | 10. CR 427 NB at Dog Track Rd. |
| | 11. CR 427 NB at SR 434 |
| | 12. CR 427 NB at SR 436 |

Seminole County 2045 Transportation Mobility Plan
Existing Conditions & Future Traffic Forecast Technical Memorandum

13. CR 427 NB at US 17/92
14. CR 427 SB at Church Ave.
15. CR 427 SB at SR 434
16. CR 427 SB at SR 436
17. CR 431 NB at SR 46
18. CR 46A EB at Airport Blvd.
19. CR 46A EB at I-4 EB Ramps
20. CR 46A EB at Rinehart Rd.
21. CR 46A EB at US 17/92
22. Dodd Road NB at Red Bug Lake Rd.
23. Dodd Road SB at Red Bug Lake Rd.
24. Dog Track Road/Seminola Boulevard/Lake Drive EB at US 17/92
25. Dog Track Road/Seminola Boulevard/Lake Drive WB at US 17/92
26. Douglas Avenue NB at SR 434
27. Douglas Avenue SB at Central Pkwy.
28. Douglas Avenue SB at SR 436 (Westmonte Dr.)
29. Eagle Circle SB at Red Bug Lake Rd.
30. Howell Branch Road EB at Lake Howell Rd.
31. Howell Branch Road EB at Plaza Entrance
32. Howell Branch Road EB at SR 436
33. International Parkway SB at CR 46A
34. Lake Emma Road SB at Lake Mary Center
35. Lake Emma Road SB at Longwood Hills Rd.
36. Lake Mary Boulevard/SR 415 EB at Country Club Rd.
37. Lake Mary Boulevard/SR 415 EB at CR 427
38. Lake Mary Boulevard/SR 415 EB at International Pkwy.
39. Lake Mary Boulevard/SR 415 EB at US 17/92
40. Lake Mary Boulevard/SR 415 WB at Country Club Rd.
41. Lake Mary Boulevard/SR 415 WB at CR 427
42. Lake Mary Boulevard/SR 415 WB at Forest Blvd.
43. Lake Mary Boulevard/SR 415 WB at I-4 EB Ramps
44. Lake Mary Boulevard/SR 415 WB at International Pkwy.
45. Lake Mary Boulevard/SR 415 WB at Lake Mary Center
46. Lake Mary Boulevard/SR 415 WB at SR 417 NB Ramps
47. Lake Way Road WB at Lake Park Dr.
48. Lockwood Boulevard SB at Mitchell Hammock Rd.
49. McCulloch Road EB at SR 434
50. McCulloch Road WB at SR 434
51. Mitchell Hammock Road EB at Alafaya Woods Blvd./Reformation Dr.
52. Mitchell Hammock Road EB at SR 434
53. Mitchell Hammock Road WB at City Plaza Way/Clara Lee Evans Way
54. Mitchell Hammock Road WB at SR 434
55. Montgomery Road NB at Central Pkwy.
56. Montgomery Road NB at SR 434
57. Old Lake Mary Road NB at Airport Blvd.
58. Old Lake Mary Road SB at CR 46A
59. Orange Avenue WB at Laurel St.
60. Red Bug Lake Road WB at SR 417 (W. Ramps)
61. Red Bug Lake Road WB at Tuskawilla Rd.
62. Rinehart Road NB at Primera Blvd.
63. Rinehart Road NB at SR 417 (N. Ramps)
64. Rinehart Road SB at St. Johns Pkwy.
65. Sanford Avenue NB at SR 46
66. Sanford Avenue SB at Celery Ave.
67. Tuskawilla Road NB at Trail Crossing
68. Tuskawilla Road SB at E. Lake Dr.
69. W Town Parkway EB at SR 434
70. W Town Parkway WB at SR 434

4.1.2 County Roads: Stop-Controlled Intersection Approaches with LOS F

Two of the County stop-controlled intersection approaches analyzed as part of the travel time and delay were identified with an LOS F. The locations were on different Seminole County facilities and are listed in the following text.

1. CR 431 SB at CR 46A
2. Tangerine Avenue NB at Citrus Ave.

4.1.3 County Roads: Roadway Segments with LOS F

County roadway segments operating at an LOS F based on the travel time and delay were compared to that of the capacity analysis for existing and future conditions. Only one of the eight roadway segments were identified as needing improvements based on capacity through the planning period of 2045: Longwood Lake Mary Rd. between CR 427 and Joyful Blossom Pl. All of the following roadway segments are from different County facilities:

- | | |
|--|---|
| 1. Central Pkwy. WB – Palm Springs Dr. to One Center Blvd. | 5. Lake Emma Road NB – Longwood Hills Rd. to Danbury Rd. |
| 2. CR 46A EB – US 17/92 to Grenada Ave. | 6. Longwood Lake Mary Road – CR 427 to Joyful Blossom Pl. |
| 3. Greenway Boulevard EB – Lake Emma Rd. to Greenford Dr. | 7. Pearl Lake Causeway NB – Bunnell Rd. to N/S Pearl Lake Cswy. |
| 4. Greenwood Boulevard EB – Lake Emma Rd. to Donegal Ave. | 8. Sanford Avenue SB – 1st St. to 6th St. |

4.1.4 State Roads: Signalized Intersection Approaches with LOS F

State signalized intersection approaches operating at an LOS F based on the travel time and delay are listed in the following text. The 45 signalized intersection approaches listed represent 6 facilities and 38 intersections. These locations are recommended to be reviewed for intersection improvements to improve traffic conditions.

- | | |
|--|---|
| 1. SR 414 WB at Magnolia Holmes Rd. | 12. SR 434 EB at Wekiva Springs Rd./Montgomery Rd. |
| 2. SR 426 EB at Deep Lake Rd. | 13. SR 434 WB at CR 427/Ronald Reagan Blvd. |
| 3. SR 426 EB at Hall Rd./Howell Branch Rd. | 14. SR 434 WB at I-4 (E. Ramps) |
| 4. SR 426 EB at Red Bug Lake Rd./ Mitchell Hammock Rd. | 15. SR 434 WB at Mitchell Hammock Rd. |
| 5. SR 426 EB at SR 434 | 16. SR 434 WB at Montgomery Rd./ Wekiva Springs Rd. |
| 6. SR 426 WB at Hall Rd./Howell Branch Rd. | 17. SR 434 WB at Raymond Ave. |
| 7. SR 426 WB at Red Bug Lake Rd./Mitchell Hammock Rd. | 18. SR 434 WB at SR 436 |
| 8. SR 426 WB at SR 417 (E. Ramps) | 19. SR 434 WB at US 17/92 |
| 9. SR 434 EB at SR 436 | 20. SR 436 EB at Balmy Beach Dr. |
| 10. SR 434 EB at Tuskawilla Rd. | 21. SR 436 EB at CR 427/Maitland Ave. |
| 11. SR 434 EB at US 17/92 | 22. SR 436 EB at Hattaway Dr. |

- | | |
|---|-----------------------------------|
| 23. SR 436 EB at Oxford Rd. | 35. SR 46 EB at Rinehart Rd. |
| 24. SR 436 EB at US 17/92 | 36. SR 46 EB at Sanford Ave. |
| 25. SR 436 EB at Weathersfield Ave. | 37. SR 46 EB at SR 415 |
| 26. SR 436 EB at Westmonte Dr. | 38. SR 46 WB at Orange Blvd. |
| 27. SR 436 WB at Bear Lake Rd. | 39. SR 46 WB at Town Center Blvd. |
| 28. SR 436 WB at CR 427/Ronald Reagan Blvd. | 40. SR 46 WB at Upsala Rd./CR 15 |
| 29. SR 436 WB at Essex St. | 41. US 17-92 SB at CR 15 |
| 30. SR 436 WB at Howell Branch Rd. | 42. US 17-92 SB at CR 427 |
| 31. SR 436 WB at Red Bug Lake Rd. | 43. US 17-92 SB at I-4 WB Ramps |
| 32. SR 436 WB at SR 434 | 44. US 17-92 SB at SR 434 |
| 33. SR 46 EB at Orange Blvd. | 45. US 17-92 SB at Weldon Blvd. |
| 34. SR 46 EB at Park Ave. | |

4.1.5 State Roads: Stop-Controlled Intersection Approaches with LOS F

None of the state stop-controlled intersection approaches analyzed as part of the travel time and delay were identified with an LOS F.

4.1.6 State Roads: Roadway Segments with LOS F

State roadway segments operating at an LOS F based on the travel time and delay were compared to that of the capacity analysis for existing and future conditions. All except for 1 of the 11 roadway segments were identified as needing improvements based on capacity through the planning period of 2045. SR 46 from US 17-92 to Holly Ave. was identified as not needing improvements based on capacity. Only two state facilities represented the roadway segments. The roadway segments are listed below.

- | | |
|---|--|
| 1. I-4 EB - Wymore Rd. to SR 436 | 7. I-4 WB - Volusia County Line to US 17/92 |
| 2. I-4 EB - SR 436 to Central Pkwy. | 8. I-4 WB - Wymore Rd. to Orange County Line |
| 3. I-4 EB - Central Pkwy. to SR 434 | 9. I-4 WB - US 17/92 to CR 431/Orange Blvd. |
| 4. I-4 EB - CR 431/Orange Blvd. to US 17/92 | 10. I-4 WB - Central Pkwy. to SR 436 |
| 5. I-4 EB - US 17/92 to Volusia County Line | 11. SR 46 WB - US 17/92 to Holly Ave. |
| 6. I-4 EB - CR 46A to SR 46 | |

4.2 Capacity Analysis

The following text summarizes the existing conditions of the roadways within Seminole County that are included in the CFRPM. The count data used for this summary were obtained from the Traffic Counts GIS layer provided on the Seminole County website (Seminole County n.d.). The LOS thresholds are determined by using the FDOT Generalized Service Volume Tables and the Seminole County Comprehensive Plan Transportation Element, and are the applicable measure is included as part of the dataset. Appendix A includes the Seminole County Average Annual Daily Traffic (AADT) counts, LOS standard for the facility, and calculated LOS for all facilities within the County. This analysis assumes that the effects of the COVID-19 pandemic have subsided, and 2022 traffic conditions represent typical conditions. The future-year volumes were forecasted based on the CFRPM.

All capacities for the V/C ratio projections were determined based on the threshold capacity established by Seminole County. The threshold capacity varies by facility, including LOS D and E. There are also facilities where the capacity is determined to be LOS E plus a percentage of capacity of either 10% or 20%

Seminole County 2045 Transportation Mobility Plan

Existing Conditions & Future Traffic Forecast Technical Memorandum

as determined by policy. Capacities of all existing conditions deficiencies were verified and validated to ensure the accuracy of the capacity analysis and future project considerations.

As indicated in the Existing Conditions and Deficiencies Technical Memorandum, the analysis of the existing conditions (2022) revealed that 18 roadway segments (12 facilities) are over capacity by current County standards. A total of 12 roadway segments (9 facilities) are maintained by the County (Jacobs 2022).

Seven roadway segments are currently over capacity with in-progress or planned capacity improvements. Two additional currently over capacity roadway segments are part of Wekiva Springs Road has been identified as constrained facilities per the Transportation Element of the Seminole County Comprehensive Plan (Seminole County n.d.). This identification applies under the clause that the roadway lies within the Wekiva River Protection Area.

Map 1 – 2022 Volume/Capacity Ratios in Appendix B represents the V/C ratios for roadway segments within the Seminole County network at 0.95 and above.

Table 4-1 summarizes the existing condition characteristics for County roadway segments that are projected to have an LOS F in 2045. Other County roadway segments that do not have an LOS F in 2045, however, currently have an existing condition of LOS F and are summarized in Table 4-2 with the justifications. Seminole Boulevard from I-4 to US 17/92 did not have available data for this analysis.

Table 4-1. 2022 County LOS with V/C Ratios for 2045 LOS F Roadway Segments – County Roads

Roadway	From	To	Lanes	County LOS	V/C Ratio
Bunnell Road	Eden Park Rd.	Pearl Lake Cswy.	2	D	0.53
Bunnell Road	Pearl Lake Cswy.	West Town Pkwy.	2	C	0.45
CR 419	Lockwood Blvd.	Snowhill Rd.	4	C	0.89
CR 419 ^a	Snowhill Rd.	Riverwoods Dr.	2	C	0.74
CR 419 ^a	Riverwoods Dr.	Orange County Line	2	C	0.62
CR 415 (Celery Avenue)	Sanford Ave.	Mellonville Ave.	2	D	0.56
CR 426	Lockwood Blvd.	Old Mims Rd.	2	C	0.56
CR 426	Old Mims Rd.	SR 46	2	C	0.70
CR 427 (Ronald Reagan Blvd.)	North St.	Dogtrack Rd.	4	C	0.68
CR 427 (Ronald Reagan Blvd.)	Dogtrack Rd.	SR 434	4	C	0.66
CR 427 (Ronald Reagan Blvd.)	SR 434	Longwood Hills Rd.	4	C	0.79
CR 427 (Ronald Reagan Blvd.)	Sunland Dr.	Lake Mary Blvd.	4	C	0.65
Dean Road ^a	Orange County Line	SR 426	2	C	0.88
Douglas Avenue	North St.	SR 434	2	D	0.79
EE Williamson Road ^a	Tollgate Tr.	Rangeline Rd.	2	D	0.61

Seminole County 2045 Transportation Mobility Plan
Existing Conditions & Future Traffic Forecast Technical Memorandum

Table 4-1. 2022 County LOS with V/C Ratios for 2045 LOS F Roadway Segments – County Roads

Roadway	From	To	Lanes	County LOS	V/C Ratio
Howell Branch Road ^b	Orange County Line	Lake Howell Rd.	4	C	0.76
Howell Branch Road ^b	Lake Howell Rd.	SR 436	4	C	0.78
Lake Emma Road	Greenwood Blvd.	Lake Mary Center	4	C	0.71
Lake Emma Road	Lake Mary Center	Lake Mary Blvd.	4	C	0.82
Lake Mary Boulevard	I-4	Lake Emma Rd.	6	F	1.13
Lake Mary Boulevard	Rinehart Rd. / Greenwood Blvd.	Country Club Rd.	4	F	1.11
Lockwood Boulevard	Mitchell Hammock Rd.	CR 419	4	F	1.06
Longwood Hills Road ^c	Rangeline Rd.	Lake Emma Rd.	2	F	1.15
Longwood Hills Road	Lake Emma Rd.	CR 427	2	D	0.87
Longwood Lake Mary Road ³	CR 427	Green Way Blvd.	2	C	0.94
Longwood Lake Mary Road ³	Green Way Blvd.	Lake Way Rd.	2	C	0.93
Markham Woods Road ^b	SR 434	EE Williamson Rd.	2	E	0.91
Markham Woods Road ^b	Lake Mary Blvd.	Bridgewater Dr.	2	C	0.59
McCulloch Road	SR 434	Lockwood Blvd.	4	C	0.71
McCulloch Road	Lockwood Blvd.	Old Lockwood Rd.	6	F	1.06
Mitchell Hammock Road ^c	SR 426	SR 434	4	F	1.04
Mitchell Hammock Road ^a	SR 434	Alafaya Woods Blvd.	4	C	0.93
Mitchell Hammock Road	Alafaya Woods Blvd.	Lockwood Blvd.	4	C	0.88
Park Avenue	US 17/92	SR 46	2	C	0.41
Rangeline Road	SR 434	Church Ave	2	D	0.59
Rangeline Road	Church Ave	EE Williamson Rd./ Longwood Hills Rd.	2	D	0.59
Red Bug Lake Road	SR 436	Eagle Circle	4	F	1.02
Red Bug Lake Road ^b	Eagle Circle	Tuskawilla Rd.	4	C	0.74
Red Bug Lake Road	SR 417	SR 426	6	C	0.74
Rinehart Road	Lake Mary Blvd.	Anderson Ln.	4	C	0.66
Rinehart Road	Anderson Ln.	CR 46A	4	C	0.95

Seminole County 2045 Transportation Mobility Plan
Existing Conditions & Future Traffic Forecast Technical Memorandum

Table 4-1. 2022 County LOS with V/C Ratios for 2045 LOS F Roadway Segments – County Roads

Roadway	From	To	Lanes	County LOS	V/C Ratio
Sand Lake Road ^a	Hunt Club Blvd.	W Lake Brantley Rd.	2	D	0.82
Sand Lake Road ^a	W Lake Brantley Rd.	SR 434	2	F	1.05
Seminola Blvd.	Button Rd.	Winter Park Dr.	4	C	0.64
Seminole Blvd.	I-4	US 17/92	2	N/A	N/A
Slavia Road ^a	Red Bug Lake Rd.	SR 426	2	C	0.71
Tuskawilla Road ^a	Red Bug Lake Rd.	Eagle Blvd.	4	C	0.86
Tuskawilla Road ^a	Eagle Blvd.	E. Lake Dr.	4	C	0.86
Wekiva Springs Road ^b	Orange County Line	Hunt Club Blvd.	2	F	1.56

^a Future condition forecast identified overcapacity with previously identified capacity improvement project

^b Policy-constrained facility

^c Existing condition over capacity with previously identified capacity improvement project

N/A = Not Available

The County roadway segments listed in Table 4-2 were initially indicated as segments with existing condition deficiency. However, through the validation process information was required for each of the roadway segments.

Table 4-2. 2022 County LOS F with V/C Ratios with no Forecasted Deficiency – County Roads

Roadway	From	To	Lanes	County LOS	V/C Ratio
CR 419	SR 434	Reed Ave.	2	F	1.20
CR 419	Reed Ave.	Lockwood Blvd.	2	F	1.03
Wekiva Springs Rd.	Hunt Club Blvd.	Fox Valley Dr.	2	F	1.26

The following facilities were not included in Table :

- **CR 419: SR 434 to Reed Ave.** The widening of the roadway is currently actively under construction. The capacity for the future conditions was manually adjusted to reflect the capacity improvements. Therefore, the LOS F does not carry beyond the 2022 analysis.
- **CR 419: Reed Ave. to Lockwood Blvd.** The widening of the roadway is currently actively under construction. The capacity for the future conditions was manually adjusted to reflect the capacity improvements. Therefore, the LOS F does not carry beyond the 2022 analysis.
- **Wekiva Springs Rd.: Hunt Club Blvd. to Fox Valley Dr.** The 2022 traffic counts indicated that the roadway segment was over capacity. However, the projected CFRPM counts did not indicate that this roadway segment was over capacity. The roadway segment is forecasted to operate at LOS E with a V/C of 0.94. This roadway segment is also policy-constrained and has not been recommended for capacity improvements based on this constraint.

Seminole County 2045 Transportation Mobility Plan
Existing Conditions & Future Traffic Forecast Technical Memorandum

Table 4-3 lists the existing condition characteristics for state roadway segments that are projected to have an LOS F in 2045. An additional state roadway segment that does not have an LOS F in 2045, however, currently has an existing condition of LOS F and is summarized in Table 4-4 with the justification.

Table 4-3. 2022 County LOS with V/C Ratios for 2045 LOS F Roadway Segments – State Roads

Roadway	From	To	Lanes	County LOS	V/C Ratio
Interstate 4	Orange County Line	SR 436	8	C	0.74
Interstate 4	SR 436	SR 434	8	D	0.83
Interstate 4 ^a	SR 434	Lake Mary Blvd.	6	D	0.98
Interstate 4 ^a	Lake Mary Blvd.	SR 46	8	B	0.51
Interstate 4 ^a	SR 46	Volusia County Line	8	D	0.87
SR 417 (Seminole Expressway) ^a	Red Bug Lake Rd.	SR 434	4	C	0.75
SR 417 (Seminole Expressway) ^a	SR 434	CR 427	4	C	0.69
SR 419 ^a	SR 434	Edgemon Ave.	2	C	0.77
SR 419 ^a	Edgemon Ave.	US 17/92	2	C	0.80
SR 426	Orange County Line	Hall Rd./Howell Branch Rd.	4	C	0.66
SR 426 ^a	Hall Rd./Howell Branch Rd.	Tuskawilla Rd.	4	C	0.82
SR 426	SR 417	Dean Rd.	4	C	0.77
SR 434 ^a	Mitchell Hammock Rd.	SR 426/CR 419	2	E	0.98
SR 434 ^c	SR 426 / CR 419	DeLeon St.	2	F	1.07
SR 434 ^c	DeLeon St.	SR 417	2	F	1.29
SR 434	Tuskawilla Rd.	SR 419	4	C	0.87
SR 434	Moss Rd.	US 17/92	4	C	0.79
SR 434	US 17/92	Ronald Reagan Blvd.	4	C	0.55
SR 434	Ronald Reagan Blvd.	Rangeline Rd.	4	F	1.10
SR 434	Rangeline Rd.	Palm Springs Dr.	6	C	0.73
SR 434	Raymond Ave.	I-4	6	E	0.91
SR 434	I-4	Douglas Ave.	6	E	0.91
SR 434	Douglas Ave.	Wekiva Springs Rd.	6	D	0.89
SR 434 ^a	Wekiva Springs Rd.	Sand Lake Rd.	4	C	0.71
SR 434 ^a	Sand Lake Rd.	SR 436	4	C	0.83
SR 436	Orange County Line	Howell Branch Rd.	6	C	0.83

Seminole County 2045 Transportation Mobility Plan
Existing Conditions & Future Traffic Forecast Technical Memorandum

Table 4-3. 2022 County LOS with V/C Ratios for 2045 LOS F Roadway Segments – State Roads

Roadway	From	To	Lanes	County LOS	V/C Ratio
SR 436	Howell Branch Rd.	Red Bug Lake Rd.	6	F	1.04
SR 436	Red Bug Lake Rd.	US 17/92	6	F	1.17
SR 436	Ronald Reagan Blvd.	Maitland Ave.	6	C	0.74
SR 436	Maitland Ave.	Palm Springs Dr.	6	C	0.63
SR 436	Northlake Blvd.	I-4	8	C	0.78
SR 436	I-4	Wymore Rd./Douglas Ave.	8	D	0.86
SR 436	SR 434	Bear Lake Rd.	6	C	0.77
SR 436	Bear Lake Rd.	Hunt Club Blvd.	6	C	0.89
SR 46 ^b	US 17/92	Sanford Ave	4	D	0.58
SR 46 ^a	SR 415	Osceola Rd	2	C	0.80
SR 46 ^a	Osceola Rd.	CR 426	2	C	0.70
SR 46	CR 426	Volusia County Line	2	C	0.43
US 17-92	Orange County Line	Lake of the Woods Blvd.	6	C	0.84
US 17-92	Lake of the Woods Blvd.	SR 436	6	C	0.86
US 17-92	SR 436	Triplet Lake Dr.	6	C	0.87
US 17-92	Triplet Lake Dr.	Seminola Blvd/Dogtrack Rd.	6	C	0.87
US 17-92	Seminola Blvd/Dogtrack Rd	SR 434	6	C	0.74
US 17-92	SR 419	Ronald Reagan Blvd.	6	C	0.46
US 17-92	Lake Mary Blvd.	Airport Blvd.	4	N/A	N/A
US 441	Orange County Line (S)	Orange County Line (N)	4	C	0.74

^a Future condition forecast identified overcapacity with previously identified capacity improvement project

^b Policy-constrained facility

^c Existing condition over capacity with previously identified capacity improvement project

N/A = Not Available

The state roadway segment listed in Table 4-4 was initially indicated as a segment with an existing condition deficiency. However, through the validation process, information was required for each of the roadway segments.

Table 4-4. 2022 County LOS F with V/C Ratios with no Forecasted Deficiency – State Roads

Roadway	From	To	Lanes	County LOS	V/C Ratio
SR 426	Winter Springs Blvd.	SR 434	2	F	1.10

This facility was not included in Table 4-3 for the following reasons:

- **SR 426: Winter Springs Blvd. to SR 434.** The widening of the roadway is currently actively under construction. The capacity for the future conditions were manually adjusted to reflect the capacity improvements. Therefore, the LOS F does not carry beyond the 2022 analysis.

5. Future-Year Roadway Capacity Analyses

This section describes the future-year roadway network capacity analyses within Seminole County using the CFRPM. The horizon periods included in this section were 2030, 2035, and 2045. The future-year volumes were forecasted based on the CFRPM output. The CFRPM has a base year of 2015, therefore, the model does not account for any effects of the COVID-19 pandemic.

The CFRPM output was used to generate future-year count data. The LOS thresholds are determined using FDOT Generalized Service Volume Tables or the Seminole County Comprehensive Plan Transportation Element and are included as part of the dataset. The CFRPM output counts, LOS standard for the facility, and calculated LOS are provided for all facilities within the County as part of Appendix A.

All capacities were determined for the V/C ratio based on the threshold capacity established by the County. Capacities of all future condition deficiencies were verified and validated to ensure the accuracy of the capacity analysis.

It is also important to note that FDOT has recently completed the I-4 Ultimate Project in Seminole County from the Orange County Line to SR 434. While the corresponding segments of the interstate are not constrained by County policy, it is reasonable to conclude that the typical section of the interstate will not be expanded within the 2045 horizon year within these areas. The capacity deficiencies are still noted within the future-year analyses.

5.1 2030 Capacity Analysis

The analysis of the future conditions in 2030 revealed that 40 roadway segments (22 facilities) are over capacity by current Seminole County standards. A total of 23 of these roadway segments (17 facilities) are maintained by the County.

Two roadway segments that are expected to be over capacity by 2030 are identified as “constrained facilities” per the Transportation Element of the Seminole County Comprehensive Plan (Seminole County n.d.). There are four roadway segments that are currently over capacity and will continue to be by 2030 without the implementation of previously planned and documented capacity improvements. There are 13 roadway segments that will be over capacity by 2030 without the implementation of previously planned and documented capacity improvements. Map 2 – 2030 Volume/Capacity Ratios in Appendix B represents the Countywide ratios for roadway segments at 0.95 and above.

Table 5-1 summarizes forecasted 2030 conditions on Seminole County roadway segments that have an LOS F in 2045.

Table 5-1. 2030 County LOS with V/C Ratios for 2045 LOS F Roadway Segments – County Roads

Roadway	From	To	Lanes	County LOS	V/C Ratio
Bunnell Road	Eden Park Rd.	Pearl Lake Cswy.	2	F	1.16
Bunnell Road	Pearl Lake Cswy.	West Town Pkwy.	2	F	1.19
CR 419	Lockwood Blvd.	Snowhill Rd.	4	C	0.94
CR 419 ^a	Snowhill Rd.	Riverwoods Dr.	2	F	1.19
CR 419 ^a	Riverwoods Dr.	Orange County Line	2	C	0.94
CR 415 (Celery Avenue)	Sanford Ave.	Mellonville Ave.	2	E	0.96
CR 426	Lockwood Blvd.	Old Mims Rd.	2	C	0.91

Seminole County 2045 Transportation Mobility Plan
Existing Conditions & Future Traffic Forecast Technical Memorandum

Table 5-1. 2030 County LOS with V/C Ratios for 2045 LOS F Roadway Segments – County Roads

Roadway	From	To	Lanes	County LOS	V/C Ratio
CR 426	Old Mims Rd.	SR 46	2	C	0.93
CR 427 (Ronald Reagan Blvd.)	North St.	Dogtrack Rd.	4	C	0.91
CR 427 (Ronald Reagan Blvd.)	Dogtrack Rd.	SR 434	4	C	0.89
CR 427 (Ronald Reagan Blvd.)	SR 434	Longwood Hills Rd.	4	F	1.01
CR 427 (Ronald Reagan Blvd.)	Sunland Dr.	Lake Mary Blvd.	4	F	1.03
Dean Road ^a	Orange County Line	SR 426	2	F	1.17
Douglas Avenue	North St.	SR 434	2	D	0.88
EE Williamson Road ^a	Tollgate Tr.	Rangeline Rd.	2	D	0.94
Howell Branch Road ^b	Orange County Line	Lake Howell Rd.	4	F	1.04
Howell Branch Road ^b	Lake Howell Rd.	SR 436	4	D	0.99
Lake Emma Road	Greenwood Blvd.	Lake Mary Center	4	C	0.92
Lake Emma Road	Lake Mary Center	Lake Mary Blvd.	4	C	0.89
Lake Mary Blvd.	I-4	Lake Emma Rd.	6	C	0.87
Lake Mary Blvd.	Rinehart Rd./Greenwood Blvd.	Country Club Rd.	4	F	1.01
Lockwood Blvd.	Mitchell Hammock Rd.	CR 419	4	F	1.18
Longwood Hills Road ^c	Rangeline Rd.	Lake Emma Rd.	2	F	1.31
Longwood Hills Road	Lake Emma Rd.	CR 427	2	F	1.15
Longwood Lake Mary Road ^a	CR 427	Green Way Blvd.	2	F	1.17
Longwood Lake Mary Road ^a	Green Way Blvd.	Lake Way Rd.	2	F	1.02
Markham Woods Road ^b	SR 434	EE Williamson Rd.	2	F	1.06
Markham Woods Road ^b	Lake Mary Blvd.	Bridgewater Dr.	2	E	0.98
McCulloch Road	SR 434	Lockwood Blvd.	4	C	0.86
McCulloch Road	Lockwood Blvd.	Old Lockwood Rd.	6	F	1.35
Mitchell Hammock Road ^c	SR 426	SR 434	4	F	1.29
Mitchell Hammock Road ^a	SR 434	Alafaya Woods Blvd.	4	F	1.08
Mitchell Hammock Road	Alafaya Woods Blvd.	Lockwood Blvd.	4	D	0.96

Seminole County 2045 Transportation Mobility Plan
Existing Conditions & Future Traffic Forecast Technical Memorandum

Table 5-1. 2030 County LOS with V/C Ratios for 2045 LOS F Roadway Segments – County Roads

Roadway	From	To	Lanes	County LOS	V/C Ratio
Park Avenue	US 17/92	SR 46	2	D	0.89
Rangeline Road	SR 434	Church Ave.	2	F	1.17
Rangeline Road	Church Ave.	EE Williamson Rd./ Longwood Hills Rd.	2	D	0.87
Red Bug Lake Road	SR 436	Eagle Circle	4	F	1.17
Red Bug Lake Road ^b	Eagle Circle	Tuskawilla Rd.	4	E	0.89
Red Bug Lake Road	SR 417	SR 426	6	F	1.04
Rinehart Road	Lake Mary Blvd.	Anderson Ln.	4	C	0.89
Rinehart Road	Anderson Ln.	CR 46A	4	C	0.89
Sand Lake Road ^a	Hunt Club Blvd	W Lake Brantley Rd.	2	D	0.93
Sand Lake Road ^a	W Lake Brantley Rd.	SR 434	2	F	1.15
Seminola Blvd.	Button Rd.	Winter Park Dr.	4	C	0.90
Seminole Blvd.	I-4	US 17/92	2	E	0.92
Slavia Road ^a	Red Bug Lake Rd.	SR 426	2	F	1.07
Tuskawilla Road ^a	Red Bug Lake Rd.	Eagle Blvd.	4	E	0.97
Tuskawilla Road ^a	Eagle Blvd	E Lake Dr.	4	F	1.03
Wekiva Springs Road ^b	Orange County Line	Hunt Club Blvd.	2	E	0.86

^a Future condition forecast identified overcapacity with previously identified capacity improvement project

^b Policy-constrained facility

^c Existing condition over capacity with previously identified capacity improvement project

Seminole County 2045 Transportation Mobility Plan
Existing Conditions & Future Traffic Forecast Technical Memorandum

Table 5-2 lists forecasted 2030 conditions on state roadway segments that have an LOS F in 2045.

Table 5-2. 2030 County LOS with V/C Ratios for 2045 LOS F Roadway Segments – State Roads

Roadway	From	To	Lanes	County LOS	V/C Ratio
Interstate 4	Orange County Line	SR 436	8	E	1.05
Interstate 4	SR 436	SR 434	8	D	1.00
Interstate 4 ^a	SR 434	Lake Mary Blvd.	6	F	1.26
Interstate 4 ^a	Lake Mary Blvd.	SR 46	8	E	1.04
Interstate 4 ^a	SR 46	Volusia County Line	8	D	0.99
SR 417 (Seminole Expressway) ^a	Red Bug Lake Rd.	SR 434	4	D	0.98
SR 417 (Seminole Expressway) ^a	SR 434	CR 427	4	E	1.05
SR 419 ^a	SR 434	Edgemon Ave.	2	F	1.18
SR 419 ^a	Edgemon Ave.	US 17/92	2	F	1.28
SR 426	Orange County Line	Hall Rd./Howell Branch Rd.	4	E	0.93
SR 426 ^a	Hall Rd./Howell Branch Rd.	Tuskawilla Rd.	4	D	0.89
SR 426	SR 417	Dean Rd.	4	D	0.88
SR 434 ^a	Mitchell Hammock Rd.	SR 426/CR 419	2	D	0.86
SR 434 ^b	SR 426 / CR 419	DeLeon St.	2	F	1.02
SR 434 ^b	DeLeon St.	SR 417	2	F	1.27
SR 434	Tuskawilla Rd.	SR 419	4	F	1.05
SR 434	Moss Rd.	US 17/92	4	F	1.01
SR 434	US 17/92	Ronald Reagan Blvd.	4	C	0.86
SR 434	Ronald Reagan Blvd.	Rangeline Rd.	4	F	1.10
SR 434	Rangeline Rd.	Palm Springs Dr.	6	C	0.86
SR 434	Raymond Ave.	I-4	6	F	1.03
SR 434	I-4	Douglas Ave.	6	F	1.11
SR 434	Douglas Ave.	Wekiva Springs Rd.	6	E	0.93
SR 434 ^a	Wekiva Springs Rd.	Sand Lake Rd.	4	D	0.90
SR 434 ^a	Sand Lake Rd.	SR 436	4	C	0.94
SR 436	Orange County Line	Howell Branch Rd.	6	C	0.96
SR 436	Howell Branch Rd.	Red Bug Lake Rd.	6	C	0.93

Table 5-2. 2030 County LOS with V/C Ratios for 2045 LOS F Roadway Segments – State Roads

Roadway	From	To	Lanes	County LOS	V/C Ratio
SR 436	Red Bug Lake Rd.	US 17/92	6	F	1.16
SR 436	Ronald Reagan Blvd.	Maitland Ave.	6	D	0.91
SR 436	Maitland Ave.	Palm Springs Dr.	6	E	0.99
SR 436	Northlake Blvd.	I-4	8	C	0.87
SR 436	I-4	Wymore Rd./Douglas Ave.	8	E	0.99
SR 436	SR 434	Bear Lake Rd.	6	E	0.91
SR 436	Bear Lake Rd.	Hunt Club Blvd.	6	F	1.02
SR 46 ^c	US 17/92	Sanford Ave.	4	E	0.86
SR 46 ^a	SR 415	Osceola Rd.	2	F	1.56
SR 46 ^a	Osceola Rd.	CR 426	2	F	1.24
SR 46	CR 426	Volusia County Line	2	D	0.97
US 17-92	Orange County Line	Lake of the Woods Blvd.	6	C	0.86
US 17-92	Lake of the Woods Blvd.	SR 436	6	E	0.91
US 17-92	SR 436	Triplet Lake Dr.	6	C	0.94
US 17-92	Triplet Lake Dr.	Seminola Blvd./Dogtrack Rd.	6	C	0.87
US 17-92	Seminola Blvd./Dogtrack Rd.	SR 434	6	C	0.88
US 17-92	SR 419	Ronald Reagan Blvd.	6	E	0.98
US 17-92	Lake Mary Blvd.	Airport Blvd.	4	C	0.94
US 441	Orange County Line (S)	Orange County Line (N)	4	D	0.99

^a Future condition forecast identified overcapacity with previously identified capacity improvement project

^b Existing condition over capacity with previously identified capacity improvement project

^c Policy-constrained facility

5.2 2035 Capacity Analysis

The analysis of the future conditions in 2035 revealed that 54 roadway segments (26 facilities) are over capacity by current Seminole County standards. A total of 28 of these roadway segments (18 facilities) are maintained by the County.

Four roadway segments that are over capacity by 2035 are identified as constrained facilities per the Transportation Element of the Seminole County Comprehensive Plan (Seminole County n.d.). There are four roadway segments that are currently over capacity and will remain so by 2035 without the implementation of previously planned and documented capacity improvements. There are 17 roadway

Seminole County 2045 Transportation Mobility Plan
Existing Conditions & Future Traffic Forecast Technical Memorandum

segments that will be over capacity by 2035 without the implementation of previously planned and documented capacity improvements. Map 3 – 2035 Volume/Capacity Ratios in Appendix B represents the Countywide ratios for roadway segments at 0.95 and above.

Table 5-3 lists forecasted 2035 conditions on Seminole County roadway segments that have an LOS F in 2045.

Table 5-3. 2035 County LOS with V/C Ratios for 2045 LOS F Roadway Segments – County Roads

Roadway	From	To	Lanes	County LOS	V/C Ratio
Bunnell Road	Eden Park Rd.	Pearl Lake Cswy.	2	F	1.22
Bunnell Road	Pearl Lake Cswy.	West Town Pkwy.	2	F	1.26
CR 419	Lockwood Blvd.	Snowhill Rd.	4	D	0.99
CR 419 ^a	Snowhill Rd.	Riverwoods Dr.	2	F	1.25
CR 419 ^a	Riverwoods Dr.	Orange County Line	2	D	0.99
CR 415 (Celery Avenue)	Sanford Ave.	Mellonville Ave.	2	F	1.01
CR 426	Lockwood Blvd.	Old Mims Rd.	2	D	0.96
CR 426	Old Mims Rd.	SR 46	2	D	0.98
CR 427 (Ronald Reagan Blvd.)	North St.	Dogtrack Rd.	4	D	0.96
CR 427 (Ronald Reagan Blvd.)	Dogtrack Rd.	SR 434	4	C	0.94
CR 427 (Ronald Reagan Blvd.)	SR 434	Longwood Hills Rd.	4	F	1.06
CR 427 (Ronald Reagan Blvd.)	Sunland Dr.	Lake Mary Blvd.	4	F	1.08
Dean Road ^a	Orange County Line	SR 426	2	F	1.23
Douglas Avenue	North St.	SR 434	2	D	0.93
EE Williamson Road ^a	Tollgate Tr.	Rangeline Rd.	2	E	0.99
Howell Branch Road ^b	Orange County Line	Lake Howell Rd.	4	F	1.10
Howell Branch Road ^b	Lake Howell Rd.	SR 436	4	F	1.04
Lake Emma Road	Greenwood Blvd.	Lake Mary Center	4	D	0.97
Lake Emma Road	Lake Mary Center	Lake Mary Blvd.	4	C	0.94
Lake Mary Boulevard	I-4	Lake Emma Rd.	6	E	0.92
Lake Mary Boulevard	Rinehart Rd./Greenwood Blvd.	Country Club Rd.	4	F	1.06
Lockwood Boulevard	Mitchell Hammock Rd.	CR 419	4	F	1.24
Longwood Hills Road ^c	Rangeline Rd.	Lake Emma Rd.	2	F	1.39
Longwood Hills Road	Lake Emma Rd.	CR 427	2	F	1.22

Seminole County 2045 Transportation Mobility Plan
Existing Conditions & Future Traffic Forecast Technical Memorandum

Table 5-3. 2035 County LOS with V/C Ratios for 2045 LOS F Roadway Segments – County Roads

Roadway	From	To	Lanes	County LOS	V/C Ratio
Longwood Lake Mary Road ^a	CR 427	Green Way Blvd.	2	F	1.24
Longwood Lake Mary Road ^a	Green Way Blvd.	Lake Way Rd.	2	F	1.07
Markham Woods Road ^b	SR 434	EE Williamson Rd.	2	F	1.11
Markham Woods Road ^b	Lake Mary Blvd.	Bridgewater Dr.	2	F	1.04
McCulloch Road	SR 434	Lockwood Blvd.	4	C	0.91
McCulloch Road	Lockwood Blvd.	Old Lockwood Rd.	6	F	1.43
Mitchell Hammock Road ^c	SR 426	SR 434	4	F	1.35
Mitchell Hammock Road ^a	SR 434	Alafaya Woods Blvd.	4	F	1.14
Mitchell Hammock Road	Alafaya Woods Blvd.	Lockwood Blvd.	4	F	1.01
Park Avenue	US 17/92	SR 46	2	D	0.94
Rangeline Road	SR 434	Church Ave.	2	F	1.24
Rangeline Road	Church Ave.	EE Williamson Rd./ Longwood Hills Rd.	2	D	0.91
Red Bug Lake Road	SR 436	Eagle Circle	4	F	1.23
Red Bug Lake Road ^b	Eagle Circle	Tuskawilla Rd.	4	E	0.94
Red Bug Lake Road	SR 417	SR 426	6	F	1.10
Rinehart Road	Lake Mary Blvd.	Anderson Ln.	4	C	0.93
Rinehart Road	Anderson Ln.	CR 46A	4	C	0.93
Sand Lake Road ^a	Hunt Club Blvd.	W Lake Brantley Rd.	2	E	0.98
Sand Lake Road ^a	W Lake Brantley Rd.	SR 434	2	F	1.21
Seminola Boulevard	Button Rd.	Winter Park Dr.	4	D	0.95
Seminole Boulevard	I-4	US 17/92	2	E	0.97
Slavia Road ^a	Red Bug Lake Rd.	SR 426	2	F	1.13
Tuskawilla Road ^a	Red Bug Lake Rd.	Eagle Blvd.	4	F	1.02
Tuskawilla Road ^a	Eagle Blvd.	E Lake Dr.	4	F	1.08
Wekiva Springs Road ^b	Orange County Line	Hunt Club Blvd.	2	E	0.91

^a Future condition forecast identified overcapacity with previously identified capacity improvement project

^b Policy-constrained facility

^c Existing condition over capacity with previously identified capacity improvement project

Seminole County 2045 Transportation Mobility Plan
Existing Conditions & Future Traffic Forecast Technical Memorandum

Table 5-4 lists forecasted 2035 conditions on state roadway segments that have an LOS F in 2045.

Table 5-4. 2035 County LOS with V/C Ratios for 2045 LOS F Roadway Segments – State Roads

Roadway	From	To	Lanes	County LOS	V/C Ratio
Interstate 4	Orange County Line	SR 436	8	E	1.11
Interstate 4	SR 436	SR 434	8	E	1.05
Interstate 4 ^a	SR 434	Lake Mary Blvd.	6	F	1.32
Interstate 4 ^a	Lake Mary Blvd.	SR 46	8	E	1.09
Interstate 4 ^a	SR 46	Volusia County Line	8	E	1.04
SR 417 (Seminole Expressway) ^a	Red Bug Lake Rd.	SR 434	4	E	1.03
SR 417 (Seminole Expressway) ^a	SR 434	CR 427	4	E	1.11
SR 419 ^a	SR 434	Edgemon Ave.	2	F	1.24
SR 419 ^a	Edgemon Ave.	US 17/92	2	F	1.35
SR 426	Orange County Line	Hall Rd./Howell Branch Rd.	4	E	0.98
SR 426 ^a	Hall Rd / Howell Branch Rd.	Tuskawilla Rd.	4	E	0.94
SR 426	SR 417	Dean Rd.	4	E	0.93
SR 434 ^a	Mitchell Hammock Rd.	SR 426/CR 419	2	D	0.90
SR 434 ^b	SR 426/CR 419	DeLeon St.	2	F	1.08
SR 434 ^b	DeLeon St .	SR 417	2	F	1.34
SR 434	Tuskawilla Rd.	SR 419	4	F	1.11
SR 434	Moss Rd.	US 17/92	4	F	1.07
SR 434	US 17/92	Ronald Reagan Blvd.	4	C	0.91
SR 434	Ronald Reagan Blvd.	Rangeline Rd	4	F	1.16
SR 434	Rangeline Rd.	Palm Springs Dr.	6	C	0.91
SR 434	Raymond Ave.	I-4	6	F	1.08
SR 434	I-4	Douglas Ave.	6	F	1.17
SR 434	Douglas Ave.	Wekiva Springs Rd.	6	E	0.98
SR 434 ^a	Wekiva Springs Rd.	Sand Lake Rd.	4	E	0.95
SR 434 ^a	Sand Lake Rd.	SR 436	4	D	0.99
SR 436	Orange County Line	Howell Branch Rd.	6	F	1.01

Table 5-4. 2035 County LOS with V/C Ratios for 2045 LOS F Roadway Segments – State Roads

Roadway	From	To	Lanes	County LOS	V/C Ratio
SR 436	Howell Branch Rd.	Red Bug Lake Rd.	6	D	0.98
SR 436	Red Bug Lake Rd.	US 17/92	6	F	1.23
SR 436	Ronald Reagan Blvd.	Maitland Ave.	6	E	0.96
SR 436	Maitland Ave.	Palm Springs Dr.	6	F	1.04
SR 436	Northlake Blvd.	I-4	8	E	0.92
SR 436	I-4	Wymore Rd./Douglas Ave.	8	F	1.05
SR 436	SR 434	Bear Lake Rd.	6	E	0.96
SR 436	Bear Lake Rd.	Hunt Club Blvd.	6	F	1.08
SR 46 ^c	US 17/92	Sanford Ave.	4	E	0.91
SR 46 ^a	SR 415	Osceola Rd.	2	F	1.65
SR 46 ^a	Osceola Rd.	CR 426	2	F	1.30
SR 46	CR 426	Volusia County Line	2	F	1.02
US 17-92	Orange County Line	Lake of the Woods Blvd.	6	D	0.91
US 17-92	Lake of the Woods Blvd.	SR 436	6	E	0.96
US 17-92	SR 436	Triplet Lake Dr.	6	D	0.99
US 17-92	Triplet Lake Dr.	Seminola Blvd./Dogtrack Rd.	6	C	0.92
US 17-92	Seminola Blvd./Dogtrack Rd.	SR 434	6	E	0.93
US 17-92	SR 419	Ronald Reagan Blvd.	6	F	1.04
US 17-92	Lake Mary Blvd.	Airport Blvd.	4	D	0.99
US 441	Orange County Line (S)	Orange County Line (N)	4	F	1.04

^a Future condition forecast identified overcapacity with previously identified capacity improvement project

^b Existing condition over capacity with previously identified capacity improvement project

^c Policy-constrained facility

5.3 2045 Capacity Analysis

The analysis of the future conditions in 2045 revealed that 95 roadway segments (36 facilities) are over capacity by current Seminole County standards. A total of 49 of these roadway segments (27 facilities) are maintained by the County.

Seven roadways segments that are over capacity by 2045 are identified as constrained facilities per the Transportation Element of the Seminole County Comprehensive Plan (Seminole County n.d.). One over capacity roadway segment is part of Wekiva Springs Road, which lies within the Wekiva River Protection

Seminole County 2045 Transportation Mobility Plan

Existing Conditions & Future Traffic Forecast Technical Memorandum

Area. There are four roadway segments that are currently over capacity and will remain so by 2045 without the implementation of previously planned and documented capacity improvements. There are 21 roadway segments that will be over capacity by 2045 without the implementation of previously planned and documented capacity improvements. Map 4 – 2045 Volume/Capacity Ratios in Appendix B represents the Countywide ratios for roadway segments at 0.95 and above.

Table 5-5 lists future conditions on Seminole County roadway segments that have an LOS F in 2045.

Table 5-5. 2045 County LOS F with V/C Ratios – County Roads

Roadway	From	To	Lanes	County LOS	V/C Ratio
Bunnell Road	Eden Park Rd.	Pearl Lake Cswy.	2	F	1.36
Bunnell Road	Pearl Lake Cswy.	West Town Pkwy.	2	F	1.39
CR 419	Lockwood Blvd.	Snowhill Rd.	4	F	1.09
CR 419 ^a	Snowhill Rd.	Riverwoods Dr.	2	F	1.39
CR 419 ^a	Riverwoods Dr.	Orange County Line	2	F	1.09
CR 415 (Celery Avenue)	Sanford Ave.	Mellonville Ave.	2	F	1.12
CR 426	Lockwood Blvd.	Old Mims Rd.	2	F	1.06
CR 426	Old Mims Rd.	SR 46	2	F	1.09
CR 427 (Ronald Reagan Blvd.)	North St.	Dogtrack Rd.	4	F	1.07
CR 427 (Ronald Reagan Blvd.)	Dogtrack Rd.	SR 434	4	F	1.05
CR 427 (Ronald Reagan Blvd.)	SR 434	Longwood Hills Rd	4	F	1.18
CR 427 (Ronald Reagan Blvd.)	Sunland Dr.	Lake Mary Blvd.	4	F	1.20
Dean Road ^a	Orange County Line	SR 426	2	F	1.36
Douglas Avenue	North St.	SR 434	2	F	1.03
EE Williamson Road ^a	Tollgate Tr.	Rangeline Rd.	2	F	1.10
Howell Branch Road ^b	Orange County Line	Lake Howell Rd.	4	F	1.22
Howell Branch Road ^b	Lake Howell Rd.	SR 436	4	F	1.15
Lake Emma Road	Greenwood Blvd.	Lake Mary Center	4	F	1.07
Lake Emma Road	Lake Mary Center	Lake Mary Blvd.	4	F	1.04
Lake Mary Boulevard	I-4	Lake Emma Rd.	6	F	1.02
Lake Mary Boulevard	Rinehart Rd./Greenwood Blvd.	Country Club Rd.	4	F	1.18
Lockwood Boulevard	Mitchell Hammock Rd.	CR 419	4	F	1.38
Longwood Hills Road ^c	Rangeline Rd.	Lake Emma Rd.	2	F	1.54

Seminole County 2045 Transportation Mobility Plan
Existing Conditions & Future Traffic Forecast Technical Memorandum

Table 5-5. 2045 County LOS F with V/C Ratios – County Roads

Roadway	From	To	Lanes	County LOS	V/C Ratio
Longwood Hills Road	Lake Emma Rd.	CR 427	2	F	1.35
Longwood Lake Mary Road ^a	CR 427	Green Way Blvd.	2	F	1.37
Longwood Lake Mary Road ^a	Green Way Blvd.	Lake Way Rd.	2	F	1.19
Markham Woods Road ^b	SR 434	EE Williamson Rd.	2	F	1.24
Markham Woods Road ^b	Lake Mary Blvd.	Bridgewater Dr.	2	F	1.15
McCulloch Road	SR 434	Lockwood Blvd.	4	F	1.01
McCulloch Road	Lockwood Blvd.	Old Lockwood Rd.	6	F	1.58
Mitchell Hammock Road ^c	SR 426	SR 434	4	F	1.50
Mitchell Hammock Road ^a	SR 434	Alafaya Woods Blvd.	4	F	1.26
Mitchell Hammock Road	Alafaya Woods Blvd.	Lockwood Blvd.	4	F	1.12
Park Avenue	US 17/92	SR 46	2	F	1.05
Rangeline Road	SR 434	Church Ave.	2	F	1.37
Rangeline Road	Church Ave.	EE Williamson Rd./ Longwood Hills Rd.	2	F	1.01
Red Bug Lake Road	SR 436	Eagle Circle	4	F	1.37
Red Bug Lake Road ^b	Eagle Circle	Tuskawilla Rd.	4	F	1.04
Red Bug Lake Road	SR 417	SR 426	6	F	1.22
Rinehart Road	Lake Mary Blvd.	Anderson Ln.	4	F	1.04
Rinehart Road	Anderson Ln.	CR 46A	4	F	1.04
Sand Lake Road ^a	Hunt Club Blvd.	W Lake Brantley Rd.	2	F	1.08
Sand Lake Road ^a	W Lake Brantley Rd.	SR 434	2	F	1.35
Seminola Boulevard	Button Rd.	Winter Park Dr.	4	F	1.06
Seminole Boulevard	I-4	US 17/92	2	F	1.07
Slavia Road ^a	Red Bug Lake Rd.	SR 426	2	F	1.25
Tuskawilla Road ^a	Red Bug Lake Rd.	Eagle Blvd.	4	F	1.13
Tuskawilla Road ^a	Eagle Blvd.	E Lake Dr.	4	F	1.20
Wekiva Springs Road ^b	Orange County Line	Hunt Club Blvd.	2	F	1.01

^a Future condition forecast identified overcapacity with previously identified capacity improvement project

^b Policy-constrained facility

^c Existing condition over capacity with previously identified capacity improvement project

Seminole County 2045 Transportation Mobility Plan
Existing Conditions & Future Traffic Forecast Technical Memorandum

Table 5-6 lists future conditions on state roadway segments that have an LOS F in 2045.

Table 5-6. 2045 County LOS F with V/C Ratios – State Roads

Roadway	From	To	Lanes	County LOS	V/C Ratio
Interstate 4	Orange County Line	SR 436	8	F	1.23
Interstate 4	SR 436	SR 434	8	F	1.17
Interstate 4 ^a	SR 434	Lake Mary Blvd.	6	F	1.47
Interstate 4 ^a	Lake Mary Blvd.	SR 46	8	F	1.21
Interstate 4 ^a	SR 46	Volusia County Line	8	F	1.15
SR 417 (Seminole Expressway) ^a	Red Bug Lake Rd.	SR 434	4	F	1.14
SR 417 (Seminole Expressway) ^a	SR 434	CR 427	4	F	1.23
SR 419 ^a	SR 434	Edgemon Ave.	2	F	1.38
SR 419 ^a	Edgemon Ave.	US 17/92	2	F	1.50
SR 426	Orange County Line	Hall Rd./Howell Branch Rd.	4	F	1.09
SR 426 ^a	Hall Rd./Howell Branch Rd.	Tuskawilla Rd.	4	F	1.04
SR 426	SR 417	Dean Rd.	4	F	1.03
SR 434 ^a	Mitchell Hammock Rd.	SR 426/CR 419	2	F	1.00
SR 434 ^b	SR 426/CR 419	DeLeon St.	2	F	1.20
SR 434 ^b	DeLeon St.	SR 417	2	F	1.49
SR 434	Tuskawilla Rd.	SR 419	4	F	1.23
SR 434	Moss Rd.	US 17/92	4	F	1.19
SR 434	US 17/92	Ronald Reagan Blvd.	4	F	1.01
SR 434	Ronald Reagan Blvd.	Rangeline Rd.	4	F	1.28
SR 434	Rangeline Rd.	Palm Springs Dr.	6	F	1.01
SR 434	Raymond Ave.	I-4	6	F	1.20
SR 434	I-4	Douglas Ave.	6	F	1.30
SR 434	Douglas Ave.	Wekiva Springs Rd.	6	F	1.09
SR 434 ^a	Wekiva Springs Rd.	Sand Lake Rd.	4	F	1.06
SR 434 ^a	Sand Lake Rd.	SR 436	4	F	1.10
SR 436	Orange County Line	Howell Branch Rd.	6	F	1.12

Seminole County 2045 Transportation Mobility Plan
Existing Conditions & Future Traffic Forecast Technical Memorandum

Table 5-6. 2045 County LOS F with V/C Ratios – State Roads

Roadway	From	To	Lanes	County LOS	V/C Ratio
SR 436	Howell Branch Rd.	Red Bug Lake Rd.	6	F	1.09
SR 436	Red Bug Lake Rd.	US 17/92	6	F	1.36
SR 436	Ronald Reagan Blvd.	Maitland Ave.	6	F	1.06
SR 436	Maitland Ave.	Palm Springs Dr.	6	F	1.15
SR 436	Northlake Blvd.	I-4	8	F	1.02
SR 436	I-4	Wymore Rd./Douglas Ave.	8	F	1.16
SR 436	SR 434	Bear Lake Rd.	6	F	1.07
SR 436	Bear Lake Rd.	Hunt Club Blvd.	6	F	1.20
SR 46 ^c	US 17/92	Sanford Ave.	4	F	1.01
SR 46 ^a	SR 415	Osceola Rd.	2	F	1.83
SR 46 ^a	Osceola Rd.	CR 426	2	F	1.45
SR 46	CR 426	Volusia County Line	2	F	1.14
US 17-92	Orange County Line	Lake of the Woods Blvd	6	F	1.00
US 17-92	Lake of the Woods Blvd.	SR 436	6	F	1.07
US 17-92	SR 436	Triplet Lake Dr.	6	F	1.10
US 17-92	Triplet Lake Dr.	Seminola Blvd./Dogtrack Rd.	6	F	1.02
US 17-92	Seminola Blvd./Dogtrack Rd.	SR 434	6	F	1.03
US 17-92	SR 419	Ronald Reagan Blvd.	6	F	1.15
US 17-92	Lake Mary Blvd.	Airport Blvd.	4	F	1.10
US 441	Orange County Line (S)	Orange County Line (N)	4	F	1.16

^a Future condition forecast identified overcapacity with previously identified capacity improvement project

^b Existing condition over capacity with previously identified capacity improvement project

^c Policy-constrained facility

6. Future Roadway Capacity Deficiencies

This section summarizes the overall future roadway capacity deficiencies. When the future years of 2030, 2035, and 2045 are considered, there is a significant roadway capacity deficiency in Seminole County. With a Countywide network of 311 roadway segments, approximately 30.5% of the roadway segments are expected to operate at an LOS F by 2045.

Table 6-1 summarizes the progression of future condition LOS for the County and state roadway networks. Both the County and the state roadway networks showed a forecast of a relatively even distribution of LOS in the future years, with some exceptions as noted in the following text.

The County roadways showed a decrease in LOS C during the future years, with these shifting toward lower LOS of D, E, and F. The LOS D and E remained approximately unchanged through 2035 and 2045. LOS F more than doubled, increasing from 23 roadway segments in 2030 to 49 roadway segments in 2045.

State roadways showed a consistent number of LOS B roadway segments during the future years. The number of state roadway segments with LOS C decreased by 20 compared to the County roadway segments (which decreased by 32). State facilities also shifted to the lower LOS of D, E, and F. Unlike the County roadway segments, state roadway segments with LOS D and E showed significant decreases. However, state roadway segments with LOS F more than tripled, increasing from 14 roadway segments in 2030 to 46 roadway segments in 2045.

Table 6-1. 2030, 2035, and 2045 County LOS Summary

County Road Segments				State Road Segments		
LOS	2030	2035	2045	2030	2035	2045
A	0	0	0	0	0	0
B	0	0	0	5	5	4
C	138	124	106	52	44	32
D	48	57	52	12	8	7
E	8	8	10	11	17	5
F	23	28	49	14	20	46

Table 6-2 summarizes the distribution of the 2045 LOS for County and state roadway segments. Even with the significant increases in LOS F for County roadway segments, it is still only the third highest LOS, with 22.6% of roadway segments. However, 48.9% of state roadway segments are performing at LOS F, which makes it the highest for these facilities.

Table 6-2. 2045 County Levels of Service Summary

County Roads			State Roads	
LOS	Segments	% of Total	Segments	% of Total
A	0	0.0%	0	0.0%
B	0	0.0%	4	4.3%
C	106	48.8%	32	34.0%
D	52	24.0%	7	7.5%
E	10	4.6%	5	5.3%
F	49	22.6%	46	48.9%
Totals	217	100.0%	94	100.0%

7. References

Florida Department of Transportation (FDOT). 2020. *2020 Quality/Level of Service Handbook*. June.

Jacobs. 2022. Existing Conditions & Deficiencies Technical Memorandum. November 14.

Luke Transportation Engineering Consultants, Inc. 2022. *2022 Seminole County Travel Time & Delay Study*.

Seminole County. n.d. "Comprehensive Plan." Accessed June 23, 2022.

<https://www.seminolecountyfl.gov/departments-services/development-services/planning-development/codes-regulations/comprehensive-plan/>.

Seminole County. n.d. "Traffic Counts, Seminole County." Seminole County Traffic Engineering. Accessed November 14, 2022. <https://seminolegis.maps.arcgis.com/apps/MapTools/index.html?appid=82953aba96ac4e0e8df9075265ecde6f>.

Appendix A
Existing Conditions and Future
Forecasted Level of Service and
Volume to Capacity Tables

Appendix A. Existing Conditions and Future Forecasted Level of Service (LOS) and Volume to Capacity (V/C) Tables

Segment Number	Roadway	From	To	LOS Standard	2022 Capacity	2022 LOS Standard Capacity	2022 AADT	2022 LOS	2022 V/C Ratio	Model E+C 2025 Capacity	E+C 2025 Capacity	2030 AADT	2030 LOS	2030 V/C Ratio	2035 AADT	2035 LOS	2035 V/C Ratio	2045 AADT	2045 LOS	2045 V/C Ratio
1	1st Street	US 17/92	Mellonville Ave.	E	14800	14800	7789	D	0.53	14800	14800	5162	C	0.35	5438	C	0.37	6037	C	0.41
2	Airport Boulevard	SR 46	McCraken Rd.	E	14800	14800	5364	C	0.36	14800	14800	1609	C	0.11	1695	C	0.11	1882	C	0.13
3	Airport Boulevard	McCraken Rd.	Martin Luther King Jr. Blvd.	E	14800	14800	7637	D	0.52	14800	14800	3101	C	0.21	3267	C	0.22	3627	C	0.25
4	Airport Boulevard	Martin Luther King Jr. Blvd.	Old Lake Mary Rd.	E	37800	37800	17364	C	0.46	37800	37800	23751	C	0.63	25024	C	0.66	27779	C	0.73
5	Airport Boulevard	Old Lake Mary Rd.	US 17/92	E	37800	37800	17060	C	0.45	37800	37800	18870	C	0.50	19881	C	0.53	22070	C	0.58
6	Airport Boulevard	US 17/92	Sanford Ave.	E	14800	14800	11491	D	0.78	14800	14800	6248	C	0.42	6583	C	0.44	7308	D	0.49
7	Airport Boulevard	Sanford Ave.	Mellonville Ave.	E	14800	14800	4694	C	0.32	14800	14800	9944	D	0.67	10478	D	0.71	11631	D	0.79
8	Bear Lake Road	Orange County Line	Bunnell Rd.	E + 20%	14800	17800	9637	D	0.54	14800	17800	15008	E	0.84	15813	E	0.89	17554	E	0.99
9	Bear Lake Road	Bunnell Rd.	McNeil Rd.	E + 20%	14800	17800	11600	D	0.65	14800	17800	7388	D	0.42	7784	D	0.44	8641	D	0.49
10	Bear Lake Road	McNeil Rd.	SR 436	E + 20%	14800	17800	9689	D	0.54	14800	17800	4622	C	0.26	4869	C	0.27	5406	C	0.30
11	Bunnell Road	Bear Lake Rd.	Eden Park Rd.	E	14800	14800	7680	D	0.52	14800	14800	8734	D	0.59	9203	D	0.62	10216	D	0.69
12	Bunnell Road	Eden Park Rd.	Pearl Lake Cswy.	E	14800	14800	7803	D	0.53	14800	14800	17169	F	1.16	18090	F	1.22	20081	F	1.36
13	Bunnell Road	Pearl Lake Cswy.	West Town Pkwy.	E	14800	14800	6675	C	0.45	14800	14800	17648	F	1.19	18594	F	1.26	20642	F	1.39
14	Central Parkway	Montgomery Rd.	Douglas Ave.	E	32100	32100	19412	D	0.60	32100	32100	15345	D	0.48	16167	D	0.50	17947	D	0.56
15	Central Parkway	Douglas Ave.	I-4	E	32100	32100	20583	D	0.64	32100	32100	22130	D	0.69	23317	D	0.73	25884	D	0.81
16	Central Parkway	I-4	Crane Roost Blvd.	E	32100	32100	19255	D	0.60	32100	32100	13614	C	0.42	14344	D	0.45	15923	D	0.50
17	Central Parkway	Crane Roost Blvd.	Altamonte Mall	E	32100	32100	17223	D	0.54	32100	32100	8162	C	0.25	8600	C	0.27	9547	C	0.30
18	Central Parkway	Altamonte Mall	Palm Springs Dr.	E	32100	32100	17631	D	0.55	32100	32100	7986	C	0.25	8414	C	0.26	9340	C	0.29
19	Chapman Road	SR 426	SR 434	E	37800	37800	23246	C	0.61	37800	37800	29875	C	0.79	31476	C	0.83	34942	C	0.92
20	CR 15 (Monroe Road)	US 17/92	SR 46	E	37800	37800	24395	C	0.65	37800	37800	20980	C	0.56	22105	C	0.58	24539	C	0.65
21	CR 15 (Upsala Road)	SR 46	CR 46A	E	14800	14800	12199	D	0.82	14800	14800	11569	D	0.78	12189	D	0.82	13531	D	0.91
22	CR 15 (Country Club Road)	CR 427	Broadmoor Rd.	E	16800	16800	10137	C	0.60	16800	16800	11702	C	0.70	12329	C	0.73	13687	C	0.81
23	CR 15 (Country Club Road)	Broadmoor Rd.	Lake Mary Blvd.	E	14800	14800	8355	D	0.56	14800	14800	12246	D	0.83	12903	D	0.87	14323	E	0.97
24	CR 15 (Country Club Road)	Lake Mary Blvd.	CR 46A	E	14800	14800	11052	D	0.75	14800	14800	7215	D	0.49	7602	D	0.51	8439	D	0.57
25	CR 46A (HE Thomas Jr. Pkwy.)	Orange Blvd.	Rinehart Rd.	E + 10%	37800	41600	37537	D	0.90	37800	41600	33910	C	0.82	35728	C	0.86	39661	E	0.95
26	CR 46A (HE Thomas Jr. Pkwy.)	Rinehart Rd.	Upsala Rd.	E	37800	37800	28189	C	0.75	37800	37800	24552	C	0.65	25868	C	0.68	28716	C	0.76
27	CR 46A (25th Street)	Upsala Rd.	Old Lake Mary Rd.	E + 10%	37800	41600	32510	C	0.78	37800	41600	27917	C	0.67	29414	C	0.71	32652	C	0.78
28	CR 46A (25th Street)	Old Lake Mary Rd.	US 17/92	E	32100	32100	23673	D	0.74	32100	32100	22604	D	0.70	23816	D	0.74	26439	D	0.82

Appendix A. Existing Conditions and Future Forecasted Level of Service (LOS) and Volume to Capacity (V/C) Tables

29	CR 419	SR 434	Reed Ave.	E	14800	14800	17772	F	1.20	32100	32100	16389	D	0.51	17267	D	0.54	19168	D	0.60
30	CR 419	Reed Ave.	Lockwood Blvd.	E	16800	16800	17320	F	1.03	37800	37800	19033	C	0.50	20053	C	0.53	22261	C	0.59
31	CR 419	Lockwood Blvd.	Snowhill Rd.	E	37800	37800	33807	C	0.89	37800	37800	35349	C	0.94	37244	D	0.99	41345	F	1.09
32	CR 419	Snowhill Rd.	Riverwoods Dr.	E	16800	16800	12404	C	0.74	16800	16800	19920	F	1.19	20988	F	1.25	23299	F	1.39
33	CR 419	Riverwoods Dr.	Orange County Line	D	16800	16800	10388	C	0.62	16800	16800	15718	C	0.94	16561	D	0.99	18385	F	1.09
34	CR 415 (Celery Avenue)	US 17/92	Park Ave.	E	14800	14800	6881	C	0.46	14800	14800	10303	D	0.70	10855	D	0.73	12050	D	0.81
35	CR 415 (Celery Avenue)	Park Ave.	Sanford Ave.	E	14800	14800	6588	C	0.45	14800	14800	10398	D	0.70	10955	D	0.74	12161	D	0.82
36	CR 415 (Celery Avenue)	Sanford Ave.	Mellonville Ave.	E	14800	14800	8296	D	0.56	14800	14800	14222	E	0.96	14985	F	1.01	16635	F	1.12
37	CR 415 (Celery Avenue)	Mellonville Ave.	Sipes Ave.	E	16800	16800	7190	C	0.43	16800	16800	7104	C	0.42	7485	C	0.45	8309	C	0.49
38	CR 415 (Celery Avenue)	Sipes Ave.	SR 415	E	14800	14800	5017	C	0.34	14800	14800	7024	D	0.47	7401	D	0.50	8216	D	0.56
39	CR 425 (Sanford Avenue)	Lake Jesup Park	Lake Mary Blvd.	E	14800	14800	3993	C	0.27	14800	14800	3463	C	0.23	3649	C	0.25	4051	C	0.27
40	CR 425 (Sanford Avenue)	Lake Mary Blvd.	Airport Blvd.	E	37800	37800	18104	C	0.48	37800	37800	20781	C	0.55	21895	C	0.58	24306	C	0.64
41	CR 425 (Sanford Avenue)	Airport Blvd.	SR 46	E	37800	37800	17165	C	0.45	37800	37800	17015	C	0.45	17928	C	0.47	19901	C	0.53
42	CR 425 (Sanford Avenue)	SR 46	1st St.	E	14800	14800	6202	C	0.42	14800	14800	1876	C	0.13	1977	C	0.13	2194	C	0.15
43	CR 426	CR 419	Avenue B	E	16800	16800	10732	C	0.64	16800	16800	12092	C	0.72	12740	C	0.76	14143	C	0.84
44	CR 426	Avenue B	Lockwood Blvd.	E	16800	16800	9441	C	0.56	16800	16800	10283	C	0.61	10834	C	0.64	12027	C	0.72
45	CR 426	Lockwood Blvd.	Old Mims Rd.	D	16800	16800	9441	C	0.56	16800	16800	15239	C	0.91	16056	D	0.96	17824	F	1.06
46	CR 426	Old Mims Rd.	SR 46	D	16800	16800	11721	C	0.70	16800	16800	15657	C	0.93	16497	D	0.98	18313	F	1.09
47	CR 427 (Maitland Avenue)	Orange County Line	Oranole Rd.	E	32100	32100	16628	D	0.52	32100	32100	17875	D	0.56	18834	D	0.59	20907	D	0.65
48	CR 427 (Maitland Avenue)	Oranole Rd.	Spring Lake Rd. / O'Brien Rd.	E	37800	37800	18725	C	0.50	37800	37800	18824	C	0.50	19834	C	0.52	22017	C	0.58
49	CR 427 (Maitland Avenue)	Spring Lake Rd. / O'Brien Rd.	Ballard St.	E	37800	37800	18770	C	0.50	37800	37800	13983	C	0.37	14732	C	0.39	16354	C	0.43
50	CR 427 (Maitland Avenue)	Ballard St.	Orienta Ave.	E	37800	37800	15670	C	0.41	37800	37800	12925	C	0.34	13618	C	0.36	15118	C	0.40
51	CR 427 (Maitland Avenue)	Orienta Ave.	SR 436	E	37800	37800	21010	C	0.56	37800	37800	17343	C	0.46	18272	C	0.48	20284	C	0.54
52	CR 427 (Ronald Reagan Blvd.)	SR 436	North St.	E	37800	37800	12409	C	0.33	37800	37800	18486	C	0.49	19477	C	0.52	21621	C	0.57
53	CR 427 (Ronald Reagan Blvd.)	North St.	Dogtrack Rd.	E	37800	37800	25636	C	0.68	37800	37800	34438	C	0.91	36285	D	0.96	40280	F	1.07
54	CR 427 (Ronald Reagan Blvd.)	Dogtrack Rd.	SR 434	E	37800	37800	24934	C	0.66	37800	37800	33784	C	0.89	35595	C	0.94	39514	F	1.05
55	CR 427 (Ronald Reagan Blvd.)	SR 434	Longwood Hills Rd.	E	37800	37800	29834	C	0.79	37800	37800	38126	F	1.01	40170	F	1.06	44592	F	1.18
56	CR 427 (Ronald Reagan Blvd.)	Longwood Hills Rd.	Longwood Lake Mary Rd.	E	37800	37800	27153	C	0.72	37800	37800	29721	C	0.79	31314	C	0.83	34762	C	0.92
57	CR 427 (Ronald Reagan Blvd.)	Longwood Lake Mary Rd.	Country Club Rd.	E	37800	37800	19210	C	0.51	37800	37800	20241	C	0.54	21326	C	0.56	23674	C	0.63
58	CR 427 (Ronald Reagan Blvd.)	Country Club Rd.	US 17/92	E	37800	37800	20644	C	0.55	37800	37800	20770	C	0.55	21883	C	0.58	24293	C	0.64

Appendix A. Existing Conditions and Future Forecasted Level of Service (LOS) and Volume to Capacity (V/C) Tables

59	CR 427 (Ronald Reagan Blvd.)	US 17/92	County Home Rd.	E	37800	37800	24326	C	0.64	37800	37800	25638	C	0.68	27013	C	0.71	29987	C	0.79
60	CR 427 (Ronald Reagan Blvd.)	County Home Rd.	Sunland Dr.	E	37800	37800	26024	C	0.69	37800	37800	23913	C	0.63	25195	C	0.67	27969	C	0.74
61	CR 427 (Ronald Reagan Blvd.)	Sunland Dr.	Lake Mary Blvd.	E	37800	37800	24403	C	0.65	37800	37800	38863	F	1.03	40946	F	1.08	45455	F	1.20
62	CR 431 (Orange Boulevard)	CR 46A	Wayside Dr.	E	16800	16800	12871	C	0.77	16800	16800	5831	C	0.35	6143	C	0.37	6820	C	0.41
63	CR 431 (Orange Boulevard)	Wayside Dr.	SR 46	E	16800	16800	5278	C	0.31	16800	16800	4799	C	0.29	5057	C	0.30	5613	C	0.33
64	CR 431 (Orange Boulevard)	SR 46	Oregon Ave.	E	14800	14800	6623	C	0.45	14800	14800	6365	C	0.43	6706	C	0.45	7444	D	0.50
65	CR 431 (Orange Boulevard)	Oregon Ave.	Monroe Rd.	E	14800	14800	8649	D	0.58	14800	14800	7434	D	0.50	7833	D	0.53	8695	D	0.59
66	Dean Road	Orange County Line	SR 426	E	16800	16800	14740	C	0.88	16800	16800	19584	F	1.17	20634	F	1.23	22906	F	1.36
67	Dike Road	Howell Branch Rd.	Princess Gate Blvd.	E	14800	14800	4210	C	0.28	14800	14800	1191	C	0.08	1254	C	0.08	1392	C	0.09
68	Dike Road	Princess Gate Blvd.	Dodd Rd.	E	14800	14800	4207	C	0.28	14800	14800	2195	C	0.15	2313	C	0.16	2568	C	0.17
69	Dike Road	Dodd Rd.	Tuskawilla Rd.	E	14800	14800	8854	D	0.60	14800	14800	4945	C	0.33	5210	C	0.35	5784	C	0.39
70	Dodd Road	Howell Branch Rd.	Dike Rd.	E	37800	37800	10931	C	0.29	37800	37800	18658	C	0.49	19658	C	0.52	21823	C	0.58
71	Dodd Road	Dike Rd.	Red Bug Lake Rd.	E	37800	37800	11383	C	0.30	37800	37800	15789	C	0.42	16635	C	0.44	18467	C	0.49
72	Dodd Road	Red Bug Lake Rd.	Eagle Blvd.	E	14800	14800	5545	C	0.37	14800	14800	10350	D	0.70	10905	D	0.74	12106	D	0.82
73	Dog Track Road	CR 427	US 17/92	E	37800	37800	18987	C	0.50	37800	37800	29176	C	0.77	30740	C	0.81	34124	C	0.90
74	Douglas Avenue	SR 436	Citrus St.	E	14800	14800	10258	D	0.69	14800	14800	5077	C	0.34	5349	C	0.36	5938	C	0.40
75	Douglas Avenue	Citrus St.	North St.	E	14800	14800	11294	D	0.76	14800	14800	10091	D	0.68	10632	D	0.72	11803	D	0.80
76	Douglas Avenue	North St.	SR 434	E	14800	14800	11667	D	0.79	14800	14800	13052	D	0.88	13752	D	0.93	15266	F	1.03
77	East Lake Drive	Seminola Blvd.	Tuskawilla Rd.	E	37800	37800	18343	C	0.49	37800	37800	25471	C	0.67	26836	C	0.71	29791	C	0.79
78	Eastbrook Boulevard	Orange County Line	Howell Branch Rd.	E	14800	14800	2765	C	0.19	14800	14800	768	C	0.05	809	C	0.05	899	C	0.06
79	Eden Park Road	Orange County Line	Country Creek Pkwy.	E	16800	16800	6537	C	0.39	16800	16800	14158	C	0.84	14917	C	0.89	16560	D	0.99
80	Eden Park Road	Country Creek Pkwy.	Bunnell Rd.	E	16800	16800	6196	C	0.37	16800	16800	10791	C	0.64	11370	C	0.68	12621	C	0.75
81	EE Williamson Road	Markham Woods Rd.	Sunshine Tree Blvd.	E	14800	14800	12383	D	0.84	32100	32100	11816	C	0.37	12450	C	0.39	13821	D	0.43
82	EE Williamson Road	Sunshine Tree Blvd.	Tollgate Tr.	E	14800	14800	10712	D	0.72	14800	14800	11491	D	0.78	12107	D	0.82	13440	D	0.91
83	EE Williamson Road	Tollgate Tr.	Rangeline Rd.	E	14800	14800	9038	D	0.61	14800	14800	13901	D	0.94	14646	E	0.99	16259	F	1.10
86	Fort Christmas Rd.	Orange County Line	Lake Mills Rd.	D	16800	16800	2364	C	0.14	16800	16800	4226	C	0.25	4453	C	0.27	4943	C	0.29
87	General Hutchison Parkway	CR 427	US 17/92	E + 20%	16800	20200	4602	C	0.23	16800	20200	5952	C	0.29	6271	C	0.31	6961	C	0.34
88	Green Way Boulevard	Lake Emma Rd.	Lake Park Dr.	E	14800	14800	6824	C	0.46	14800	14800	5568	C	0.38	5867	C	0.40	6513	C	0.44
89	Green Way Boulevard	Lake Park Dr.	Longwood Lake Mary Rd.	E	14800	14800	7227	D	0.49	14800	14800	4537	C	0.31	4780	C	0.32	5307	C	0.36
90	Greenwood Boulevard	Lake Emma Rd.	Buttonwood Dr.	E	32100	32100	7664	C	0.24	32100	32100	5179	C	0.16	5457	C	0.17	6058	C	0.19

Appendix A. Existing Conditions and Future Forecasted Level of Service (LOS) and Volume to Capacity (V/C) Tables

91	Greenwood Boulevard	Buttonwood Dr.	Lake Mary Blvd.	E	32100	32100	16451	D	0.51	32100	32100	10524	C	0.33	11088	C	0.35	12309	C	0.38
92	Howell Branch Road	Orange County Line	Lake Howell Rd.	E	37800	37800	28905	C	0.76	37800	37800	39409	F	1.04	41522	F	1.10	46094	F	1.22
93	Howell Branch Road	Lake Howell Rd.	SR 436	E	37800	37800	29416	C	0.78	37800	37800	37296	D	0.99	39296	F	1.04	43623	F	1.15
94	Howell Branch Road	SR 436	Eastbrook Blvd.	E + 20%	37800	45400	33593	C	0.74	37800	45400	35645	C	0.79	37557	D	0.83	41692	E	0.92
95	Howell Branch Road	Eastbrook Blvd.	Dike Rd.	E + 20%	37800	45400	25177	C	0.55	37800	45400	33180	C	0.73	34959	C	0.77	38808	E	0.85
96	Howell Branch Road	Dike Rd.	Dodd Rd.	E + 20%	37800	45400	26181	C	0.58	37800	45400	30701	C	0.68	32347	C	0.71	35908	C	0.79
97	Howell Branch Road	Dodd Rd.	SR 426	E + 20%	37800	45400	19357	C	0.43	37800	45400	20547	C	0.45	21648	C	0.48	24032	C	0.53
98	Hunt Club Boulevard	SR 436	Sand Lake Rd.	E	32100	32100	13087	C	0.41	32100	32100	13370	C	0.42	14087	D	0.44	15638	D	0.49
99	Hunt Club Boulevard	Sand Lake Rd.	Wekiva Tr. (S)	E	32100	32100	14604	D	0.45	32100	32100	12258	C	0.38	12916	C	0.40	14338	D	0.45
100	Hunt Club Boulevard	Wekiva Tr. (S)	Wekiva Tr. (N)	E	32100	32100	5665	C	0.18	32100	32100	3771	C	0.12	3973	C	0.12	4410	C	0.14
101	Hunt Club Boulevard	Wekiva Tr. (N)	Wekiva Springs Rd.	E	32100	32100	9442	C	0.29	32100	32100	5174	C	0.16	5451	C	0.17	6052	C	0.19
102	International Parkway	Lake Mary Blvd.	CR 46A	E	32100	32100	15062	D	0.47	32100	32100	20590	D	0.64	21694	D	0.68	24082	D	0.75
103	International Parkway	CR 46A	SR 46	E + 10%	37800	41600	16385	C	0.39	37800	41600	10056	C	0.24	10595	C	0.25	11762	C	0.28
104	Interstate 4	Orange County Line	SR 436	D	170900	151300	111500	C	0.74	170900	151300	159127	E	1.05	167659	E	1.11	186118	F	1.23
105	Interstate 4 - Managed Lanes	Orange County Line	SR 436	D	N/A	N/A	N/A	N/A	N/A	85400	75600	34578	B	0.46	36432	B	0.48	40444	B	0.53
106	Interstate 4	SR 436	SR 434	D	170900	151300	125000	D	0.83	170900	151300	150807	D	1.00	158893	E	1.05	176387	F	1.17
107	Interstate 4 - Managed Lanes	SR 436	SR 434	D	N/A	N/A	N/A	N/A	N/A	85400	75600	20520	B	0.27	21620	B	0.29	24000	B	0.32
108	Interstate 4	SR 434	Lake Mary Blvd.	D	149500	132450	130000	D	0.98	149500	132450	166477	F	1.26	175402	F	1.32	194715	F	1.47
109	Interstate 4	Lake Mary Blvd.	SR 46	D	170900	151300	77000	B	0.51	170900	151300	156871	E	1.04	165282	E	1.09	183480	F	1.21
110	Interstate 4	SR 46	Volusia County Line	D	170900	151300	131000	D	0.87	170900	151300	149046	D	0.99	157036	E	1.04	174327	F	1.15
111	Lake Emma Road	Longwood Hills Rd.	Green Way Blvd.	E	37800	37800	16818	C	0.44	37800	37800	26031	C	0.69	27427	C	0.73	30447	C	0.81
112	Lake Emma Road	Green Way Blvd.	Sand Pond Rd.	E	37800	37800	17972	C	0.48	37800	37800	28564	C	0.76	30096	C	0.80	33409	C	0.88
113	Lake Emma Road	Sand Pond Rd.	Greenwood Blvd.	E	37800	37800	22849	C	0.60	37800	37800	29820	C	0.79	31419	C	0.83	34878	C	0.92
114	Lake Emma Road	Greenwood Blvd.	Lake Mary Center	E	37800	37800	26710	C	0.71	37800	37800	34720	C	0.92	36582	D	0.97	40610	F	1.07
115	Lake Emma Road	Lake Mary Center	Lake Mary Blvd.	E	37800	37800	31105	C	0.82	37800	37800	33757	C	0.89	35567	C	0.94	39483	F	1.04
116	Lake Howell Road	Orange County Line	Howell Branch Rd.	E + 20%	14800	17800	10910	D	0.61	14800	17800	9243	D	0.52	9739	D	0.55	10811	D	0.61
117	Lake Howell Road	Howell Branch Rd.	Tuscarora Tr.	E + 20%	14800	17800	13226	D	0.74	14800	17800	11818	D	0.66	12452	D	0.70	13823	D	0.78
118	Lake Howell Road	Tuscarora Tr.	SR 436	E + 20%	14800	17800	10697	D	0.60	14800	17800	11143	D	0.63	11741	D	0.66	13033	D	0.73
119	Lake Mary Boulevard	Markham Woods Rd.	I-4	E + 10%	37800	41600	18274	C	0.44	37800	41600	23739	C	0.57	25012	C	0.60	27766	C	0.67
120	Lake Mary Boulevard	I-4	Lake Emma Rd.	E + 10%	56900	62600	70858	F	1.13	56900	62600	54632	C	0.87	57561	E	0.92	63898	F	1.02

Appendix A. Existing Conditions and Future Forecasted Level of Service (LOS) and Volume to Capacity (V/C) Tables

121	Lake Mary Boulevard	Lake Emma Rd.	Rinehart Rd. / Greenwood Blvd.	E + 10%	56900	62600	48228	C	0.77	56900	62600	43881	C	0.70	46234	C	0.74	51324	C	0.82
122	Lake Mary Boulevard	Rinehart Rd. / Greenwood Blvd.	Country Club Rd.	E + 10%	37800	41600	46273	F	1.11	37800	41600	41960	F	1.01	44210	F	1.06	49078	F	1.18
123	Lake Mary Boulevard	Country Club Rd.	US 17/92	E + 10%	37800	41600	24480	C	0.59	37800	41600	35357	C	0.85	37253	D	0.90	41355	E	0.99
124	Lake Mary Boulevard	US 17/92	SR 417	E + 10%	37800	41600	20902	C	0.50	37800	41600	31088	C	0.75	32755	C	0.79	36361	D	0.87
125	Lake Mary Boulevard	SR 417	CR 427	D	37800	37800	17184	C	0.45	37800	37800	22955	C	0.61	24186	C	0.64	26849	C	0.71
126	Lake Mary Boulevard	CR 427	Red Cleveland Blvd.	D	37800	37800	21311	C	0.56	37800	37800	26271	C	0.70	27679	C	0.73	30727	C	0.81
127	Lake Mary Boulevard	Red Cleveland Blvd.	SR 46	E	37800	37800	20005	C	0.53	37800	37800	24222	C	0.64	25521	C	0.68	28331	C	0.75
128	Lake Mills Road	CR 419	Tropical Ave.	D	14800	14100	4104	C	0.29	14800	14800	4416	C	0.30	4653	C	0.31	5165	C	0.35
129	Lake Mills Road	Tropical Ave.	Fort Christmas Rd.	D	14800	14100	4428	C	0.31	14800	14800	4695	C	0.32	4947	C	0.33	5491	C	0.37
130	Lockwood Boulevard	McCulloch Rd.	Oviedo City Limits	E	32100	32100	13076	C	0.41	32100	32100	19831	D	0.62	20894	D	0.65	23195	D	0.72
131	Lockwood Boulevard	Oviedo City Limits	Mitchell Hammock Rd.	E	32100	32100	18804	D	0.59	32100	32100	20498	D	0.64	21597	D	0.67	23975	D	0.75
132	Lockwood Boulevard	Mitchell Hammock Rd.	CR 419	E	32100	32100	33933	F	1.06	32100	32100	37868	F	1.18	39899	F	1.24	44292	F	1.38
133	Lockwood Boulevard	CR 419	CR 426	E	16800	16800	7388	C	0.44	16800	16800	7695	C	0.46	8107	C	0.48	9000	C	0.54
84	Longwood Hills Road	Rangeline Rd.	Lake Emma Rd.	E	14800	14800	16959	F	1.15	14800	14800	19459	F	1.31	20503	F	1.39	22760	F	1.54
85	Longwood Hills Road	Lake Emma Rd.	CR 427	E	14800	14800	12839	D	0.87	14800	14800	17067	F	1.15	17982	F	1.22	19962	F	1.35
134	Longwood Lake Mary Road	CR 427	Green Way Blvd.	E	16800	16800	15728	C	0.94	16800	16800	19734	F	1.17	20792	F	1.24	23081	F	1.37
135	Longwood Lake Mary Road	Green Way Blvd.	Lake Way Rd.	E	16800	16800	15628	C	0.93	16800	16800	17127	F	1.02	18045	F	1.07	20032	F	1.19
136	Longwood Lake Mary Road	Lake Way Rd.	Lake Mary Blvd.	E	16800	16800	11885	C	0.71	16800	16800	9749	C	0.58	10272	C	0.61	11403	C	0.68
137	Longwood Markham Road	Markham Rd.	Via Hermosa St.	E + 20%	16800	20200	6420	C	0.32	16800	20200	1145	C	0.06	1206	C	0.06	1339	C	0.07
138	Longwood Markham Road	Via Hermosa St.	SR 46	E + 20%	16800	20200	6200	C	0.31	16800	20200	2022	C	0.10	2130	C	0.11	2365	C	0.12
139	Markham Road	Longwood Markham Rd.	Lake Markham Rd.	E + 20%	16800	20200	7488	C	0.37	16800	20200	2587	C	0.13	2725	C	0.13	3025	C	0.15
140	Markham Road	Lake Markham Rd.	Markham Woods Rd.	E + 20%	16800	20200	10668	C	0.53	16800	20200	5335	C	0.26	5621	C	0.28	6240	C	0.31
141	Markham Road	Markham Woods Rd.	Orange Blvd.	E + 20%	16800	20200	7803	C	0.39	16800	20200	2710	C	0.13	2856	C	0.14	3170	C	0.16
142	Markham Woods Road	SR 434	EE Williamson Rd.	E + 20%	16800	20200	18362	E	0.91	16800	20200	21354	F	1.06	22499	F	1.11	24976	F	1.24
143	Markham Woods Road	EE Williamson Rd.	Lake Mary Blvd.	E + 20%	16800	20200	12793	C	0.63	16800	20200	13822	C	0.68	14563	C	0.72	16166	D	0.80
144	Markham Woods Road	Lake Mary Blvd.	Bridgewater Dr.	E + 20%	16800	20200	11965	C	0.59	16800	20200	19861	E	0.98	20926	F	1.04	23229	F	1.15
145	Markham Woods Road	Bridgewater Dr.	Michigan St.	E + 20%	16800	20200	7960	C	0.39	16800	20200	8094	C	0.40	8528	C	0.42	9467	C	0.47
146	Markham Woods Road	Michigan St.	Markham Rd.	E + 20%	16800	20200	9779	C	0.48	16800	20200	7804	C	0.39	8222	C	0.41	9128	C	0.45
147	Martin Luther King Jr. Blvd.	Airport Blvd.	20th St.	E + 10%	37800	41600	12240	C	0.29	37800	41600	21315	C	0.51	22458	C	0.54	24930	C	0.60
148	Martin Luther King Jr. Blvd.	20th St.	St. Johns Pkwy.	E	37800	37800	12762	C	0.34	37800	37800	18815	C	0.50	19824	C	0.52	22006	C	0.58

Appendix A. Existing Conditions and Future Forecasted Level of Service (LOS) and Volume to Capacity (V/C) Tables

149	Martin Luther King Jr. Blvd.	St. Johns Pkwy.	SR 46	E + 10%	37800	41600	12216	C	0.29	37800	41600	20017	C	0.48	21090	C	0.51	23412	C	0.56
150	McCulloch Road	SR 434	Lockwood Blvd.	E	37800	37800	26892	C	0.71	37800	37800	32629	C	0.86	34379	C	0.91	38164	F	1.01
151	McCulloch Road	Lockwood Blvd.	Old Lockwood Rd.	E	16800	16800	17745	F	1.06	16800	16800	22723	F	1.35	23941	F	1.43	26577	F	1.58
152	Mellonville Avenue	SR 46	Celery Ave.	E	14800	14800	5219	C	0.35	14800	14800	3826	C	0.26	4031	C	0.27	4474	C	0.30
153	Mellonville Avenue	Celery Ave.	Seminole Blvd.	E	14800	14800	5865	C	0.40	14800	14800	2387	C	0.16	2515	C	0.17	2792	C	0.19
154	Mitchell Hammock Road	SR 426	SR 434	E	37800	37800	39129	F	1.04	37800	37800	48603	F	1.29	51209	F	1.35	56847	F	1.50
155	Mitchell Hammock Road	SR 434	Alafaya Woods Blvd.	E	37800	37800	35055	C	0.93	37800	37800	40778	F	1.08	42964	F	1.14	47695	F	1.26
156	Mitchell Hammock Road	Alafaya Woods Blvd.	Lockwood Blvd.	E	37800	37800	33097	C	0.88	37800	37800	36320	D	0.96	38267	F	1.01	42480	F	1.12
157	Montgomery Road	SR 436	Central Pkwy.	E	37800	37800	16027	C	0.42	37800	37800	11888	C	0.31	12525	C	0.33	13904	C	0.37
158	Montgomery Road	Central Pkwy.	SR 434	E	37800	37800	19990	C	0.53	37800	37800	14492	C	0.38	15267	C	0.40	16950	C	0.45
159	North Street	Raymond Ave.	Palm Springs Dr.	E	14800	14800	5284	C	0.36	14800	14800	5084	C	0.34	5357	C	0.36	5946	C	0.40
160	North Street	Palm Springs Dr.	Seminole Ave.	E	14800	14800	9696	D	0.66	14800	14800	6627	C	0.45	6982	D	0.47	7751	D	0.52
161	North Street	Seminole Ave.	CR 427	E	14800	14800	10101	D	0.68	14800	14800	11316	D	0.76	11922	D	0.81	13235	D	0.89
162	Old Lake Mary Road	County Club Rd.	Airport Blvd.	E	14800	14800	7932	D	0.54	14800	14800	7666	D	0.52	8077	D	0.55	8966	D	0.61
163	Old Lake Mary Road	Airport Blvd.	CR 46A	E + 10%	14800	16300	4468	C	0.27	14800	16300	2995	C	0.18	3156	C	0.19	3503	C	0.21
164	Old Lake Mary Road	CR 46A	Country Club Dr.	E	14800	14800	4756	C	0.32	14800	14800	4438	C	0.30	4676	C	0.32	5191	C	0.35
165	Old Lake Mary Road	Country Club Dr.	Southwest Rd.	E	14800	14800	3456	C	0.23	14800	14800	1424	C	0.10	1500	C	0.10	1665	C	0.11
166	Oranole Road	Wymore Rd.	Mt Vernon Pkwy.	E	14800	14800	4776	C	0.32	14800	14800	9070	D	0.61	9556	D	0.65	10608	D	0.72
167	Oranole Road	Mt Vernon Pkwy.	Maitland Ave.	E	14800	14800	5817	C	0.39	14800	14800	7638	D	0.52	8047	D	0.54	8933	D	0.60
168	Oregon Street	SR 46	Orange Blvd.	E	14800	14800	6510	C	0.44	14800	14800	7799	D	0.53	8217	D	0.56	9122	D	0.62
169	Oxford Road	Derbyshire Rd.	SR 436	E	14800	14800	7528	D	0.51	14800	14800	4815	C	0.33	5073	C	0.34	5631	C	0.38
170	Palm Springs Drive	SR 436	Central Pkwy.	E	32100	32100	22413	D	0.70	32100	32100	15456	D	0.48	16285	D	0.51	18078	D	0.56
171	Palm Springs Drive	Central Pkwy.	North St.	E + 20%	14800	17800	14067	D	0.79	14800	17800	10655	D	0.60	11226	D	0.63	12462	D	0.70
172	Palm Springs Drive	North St.	SR 434	E + 20%	14800	17800	6194	C	0.35	14800	17800	4924	C	0.28	5188	C	0.29	5759	C	0.32
173	Park Avenue	US 17/92	SR 46	E	14800	14800	6087	C	0.41	14800	14800	13224	D	0.89	13933	D	0.94	15467	F	1.05
174	Park Avenue	SR 46	13th St.	E	14800	14800	2298	C	0.16	14800	14800	269	C	0.02	284	C	0.02	315	C	0.02
175	Park Avenue	13th St.	1st St.	E	14800	14800	1627	C	0.11	14800	14800	1164	C	0.08	1226	C	0.08	1361	C	0.09
176	Park Avenue	1st St.	Seminole Blvd.	E	14800	14800	1190	C	0.08	14800	14800	2568	C	0.17	2706	C	0.18	3004	C	0.20
177	Park Drive	Winter Park Dr.	Lake Dr.	E	14800	14800	1763	C	0.12	14800	14800	4677	C	0.32	4928	C	0.33	5471	C	0.37
178	Pearl Lake Causeway	McNeil Rd.	SR 436	E	14800	14800	7184	D	0.49	14800	14800	8600	D	0.58	9061	D	0.61	10059	D	0.68

Appendix A. Existing Conditions and Future Forecasted Level of Service (LOS) and Volume to Capacity (V/C) Tables

179	Rangeline Road	SR 434	Church Ave.	E	14800	14800	8677	D	0.59	14800	14800	17359	F	1.17	18290	F	1.24	20304	F	1.37
180	Rangeline Road	Church Ave.	EE Williamson Rd.	E	14800	14800	8791	D	0.59	14800	14800	12812	D	0.87	13499	D	0.91	14985	F	1.01
181	Raymond Avenue	North St.	SR 434	E + 10%	14800	16300	5196	C	0.32	14800	16300	4506	C	0.28	4748	C	0.29	5270	C	0.32
182	Red Bug Lake Road	SR 436	Eagle Circle	E	37800	37800	38491	F	1.02	37800	37800	44141	F	1.17	46508	F	1.23	51628	F	1.37
183	Red Bug Lake Road	Eagle Circle	Tuskawilla Rd.	E + 20%	37800	45400	33707	C	0.74	37800	45400	40389	E	0.89	42554	E	0.94	47240	F	1.04
184	Red Bug Lake Road	Tuskawilla Rd.	Rising Sun Blvd.	E + 10%	56900	62600	43465	C	0.69	56900	62600	49288	C	0.79	51931	C	0.83	57649	E	0.92
185	Red Bug Lake Road	Rising Sun Blvd.	Slavia Rd.	E + 10%	56900	62600	39304	C	0.63	56900	62600	48409	C	0.77	51004	C	0.81	56620	D	0.90
186	Red Bug Lake Road	Slavia Rd.	SR 417	E + 10%	56900	62600	35056	C	0.56	56900	62600	38674	C	0.62	40747	C	0.65	45234	C	0.72
187	Red Bug Lake Road	SR 417	SR 426	E + 10%	56900	62600	46065	C	0.74	56900	62600	65188	F	1.04	68684	F	1.10	76246	F	1.22
188	Rinehart Road	Lake Mary Blvd.	Anderson Ln	E	37800	37800	24921	C	0.66	37800	37800	33536	C	0.89	35334	C	0.93	39224	F	1.04
189	Rinehart Road	Anderson Ln	CR 46A	E	37800	37800	35782	C	0.95	37800	37800	33523	C	0.89	35320	C	0.93	39209	F	1.04
190	Rinehart Road	CR 46A	Mall Entrance (S)	E	37800	37800	25075	C	0.66	37800	37800	23091	C	0.61	24328	C	0.64	27007	C	0.71
191	Rinehart Road	Mall Entrance (S)	SR 46	E	37800	37800	28022	C	0.74	37800	37800	20900	C	0.55	22020	C	0.58	24445	C	0.65
192	Sand Lake Road	Orange County Line	Hunt Club Blvd.	E	14800	14800	6390	C	0.43	14800	14800	12617	D	0.85	13293	D	0.90	14757	E	1.00
193	Sand Lake Road	Hunt Club Blvd.	W Lake Brantley Rd.	E	14800	14800	12104	D	0.82	14800	14800	13701	D	0.93	14435	E	0.98	16025	F	1.08
194	Sand Lake Road	W Lake Brantley Rd.	SR 434	E	14800	14800	15585	F	1.05	14800	14800	17062	F	1.15	17976	F	1.21	19956	F	1.35
195	Seminola Boulevard	US 17/92	Button Rd.	E + 10%	37800	41600	15943	C	0.38	37800	41600	23889	C	0.57	25170	C	0.61	27941	C	0.67
196	Seminola Boulevard	Button Rd.	Winter Park Dr.	E	37800	37800	24366	C	0.64	37800	37800	34207	C	0.90	36041	D	0.95	40009	F	1.06
197	Seminola Boulevard	Winter Park Dr.	East Lake Dr.	E	37800	37800	22923	C	0.61	37800	37800	28663	C	0.76	30200	C	0.80	33525	C	0.89
198	Seminole Boulevard	I-4	US 17/92	E + 10%	16800	18500	N/A	N/A	N/A	16800	18500	16967	E	0.92	17876	E	0.97	19845	F	1.07
199	Seminole Boulevard	US 17/92	Mellonville Ave.	E + 10%	14800	16300	2555	C	0.16	14800	16300	1292	C	0.08	1361	C	0.08	1511	C	0.09
200	Slavia Road	Red Bug Lake Rd.	SR 426	E	16800	16800	11955	C	0.71	16800	16800	18000	F	1.07	18965	F	1.13	21054	F	1.25
201	Snow Hill Road	CR 419	Avenue H / Brumley Rd.	E	16800	16800	8890	C	0.53	16800	16800	10335	C	0.62	10889	C	0.65	12088	C	0.72
202	Snow Hill Road	Avenue H / Brumley Rd.	Old Mims Rd.	D	16800	16800	3533	C	0.21	16800	16800	6819	C	0.41	7184	C	0.43	7976	C	0.47
203	Snow Hill Road	Old Mims Rd.	CR 426	D	14800	14100	3204	C	0.23	14800	14800	5158	C	0.35	5434	C	0.37	6032	C	0.41
204	Southwest Road	Old Lake Mary Rd.	13th St.	E	14800	14800	4029	C	0.27	14800	14800	2140	C	0.14	2255	C	0.15	2504	C	0.17
205	SR 415	SR 46	Celery Ave.	E	41800	41800	25370	C	0.61	41800	41800	30892	C	0.74	32548	C	0.78	36131	C	0.86
206	SR 415	Celery Ave.	Volusia County Line	E	41800	41800	24910	C	0.60	41800	41800	33398	C	0.80	35188	C	0.84	39062	C	0.93
207	SR 417 (Seminole Expressway)	Orange County Line	Aloma Ave.	D	106750	94600	68200	C	0.72	106750	94600	69362	C	0.73	73081	C	0.77	81127	D	0.86
208	SR 417 (Seminole Expressway)	Aloma Ave.	Red Bug Lake Rd.	D	85400	75600	57400	C	0.76	85400	75600	64406	D	0.85	67859	D	0.90	75330	D	1.00

Appendix A. Existing Conditions and Future Forecasted Level of Service (LOS) and Volume to Capacity (V/C) Tables

209	SR 417 (Seminole Expressway)	Red Bug Lake Rd.	SR 434	D	85400	75600	57000	C	0.75	85400	75600	73803	D	0.98	77760	E	1.03	86322	F	1.14
210	SR 417 (Seminole Expressway)	SR 434	CR 427	D	85400	75600	51900	C	0.69	85400	75600	79443	E	1.05	83702	E	1.11	92918	F	1.23
211	SR 417 (Seminole Expressway)	CR 427	US 17/92	D	128100	113600	43900	B	0.39	128100	113600	59411	B	0.52	62596	B	0.55	69488	C	0.61
212	SR 417 (Seminole Expressway)	US 17/92	CR 46A	D	85400	75600	41400	B	0.55	85400	75600	55180	C	0.73	58139	C	0.77	64539	D	0.85
213	SR 417 (Seminole Expressway)	CR 46A	Rinehart Rd.	D	85400	75600	40000	B	0.53	85400	75600	51107	C	0.68	53847	C	0.71	59775	C	0.79
214	SR 417 (Seminole Expressway)	Rinehart Rd.	I-4	D	106750	94600	37700	B	0.40	149450	132400	43875	B	0.33	46228	B	0.35	51318	B	0.39
215	SR 417 (Seminole Expressway)	I-4	SR 46	D	42700	37800	33600	D	0.89	85400	85400	22781	B	0.27	24003	B	0.28	26645	B	0.31
216	SR 419	SR 434	Edgemon Ave.	E	18600	18600	14339	C	0.77	18600	18600	21961	F	1.18	23139	F	1.24	25686	F	1.38
217	SR 419	Edgemon Ave.	US 17/92	E	18600	18600	14892	C	0.80	18600	18600	23886	F	1.28	25166	F	1.35	27937	F	1.50
218	SR 426	Orange County Line	Hall Rd. / Howell Branch Rd.	E + 10%	41800	46000	30422	C	0.66	41800	46000	42700	E	0.93	44989	E	0.98	49942	F	1.09
219	SR 426	Hall Rd. / Howell Branch Rd.	Tuskawilla Rd.	E + 10%	41800	46000	37890	C	0.82	41800	46000	41076	D	0.89	43278	E	0.94	48043	F	1.04
220	SR 426	Tuskawilla Rd.	SR 417	E + 10%	62900	69200	49255	C	0.71	62900	69200	46360	C	0.67	48846	C	0.71	54224	C	0.78
221	SR 426	SR 417	Dean Rd.	E + 10%	41800	46000	35379	C	0.77	41800	46000	40604	D	0.88	42781	E	0.93	47491	F	1.03
222	SR 426	Dean Rd.	Chapman Rd.	E	41800	41800	27619	C	0.66	41800	41800	28423	C	0.68	29947	C	0.72	33244	C	0.80
223	SR 426	Chapman Rd.	Red Bug Lake Rd.	E + 10%	41800	46000	28042	C	0.61	41800	46000	30516	C	0.66	32152	C	0.70	35692	C	0.78
224	SR 426	Red Bug Lake Rd.	Winter Springs Blvd.	E	41800	41800	24690	C	0.59	41800	41800	30098	C	0.72	31711	C	0.76	35203	C	0.84
225	SR 426	Winter Springs Blvd.	SR 434	E	16400	16400	18104	F	1.10	35500	35500	18670	D	0.53	19671	D	0.55	21837	D	0.62
226	SR 434	Orange County Line (E)	Chapman Rd.	E + 10%	62900	69200	44005	C	0.64	62900	69200	56174	C	0.81	59186	C	0.86	65703	E	0.95
227	SR 434	Chapman Rd.	Alafaya Woods Blvd.	E	62900	62900	38890	C	0.62	62900	62900	50169	C	0.80	52859	C	0.84	58679	C	0.93
228	SR 434	Alafaya Woods Blvd.	Mitchell Hammock Rd.	E	62900	62900	32624	C	0.52	62900	62900	43533	C	0.69	45867	C	0.73	50917	C	0.81
229	SR 434	Mitchell Hammock Rd.	SR 426 / CR 419	E	16400	16400	16034	E	0.98	16400	16400	14060	D	0.86	14814	D	0.90	16445	F	1.00
230	SR 434	SR 426 / CR 419	DeLeon St.	E	18600	18600	19887	F	1.07	18600	18600	19057	F	1.02	20078	F	1.08	22289	F	1.20
231	SR 434	DeLeon St.	SR 417	E	18600	18600	23955	F	1.29	18600	18600	23693	F	1.27	24963	F	1.34	27711	F	1.49
232	SR 434	SR 417	Springs Ave.	E	41800	41800	27563	C	0.66	41800	41800	30733	C	0.74	32380	C	0.77	35945	C	0.86
233	SR 434	Springs Ave.	Tuskawilla Rd.	E	41800	41800	27610	C	0.66	41800	41800	26192	C	0.63	27597	C	0.66	30635	C	0.73
234	SR 434	Tuskawilla Rd.	SR 419	E	41800	41800	36344	C	0.87	41800	41800	43917	F	1.05	46272	F	1.11	51366	F	1.23
235	SR 434	SR 419	Moss Rd.	E	41800	41800	24671	C	0.59	41800	41800	31561	C	0.76	33253	C	0.80	36914	C	0.88
236	SR 434	Moss Rd.	US 17/92	E	41800	41800	33165	C	0.79	41800	41800	42398	F	1.01	44671	F	1.07	49590	F	1.19
237	SR 434	US 17/92	Ronald Reagan Blvd.	E	41800	41800	23146	C	0.55	41800	41800	35977	C	0.86	37906	C	0.91	42079	F	1.01
238	SR 434	Ronald Reagan Blvd.	Rangeline Rd.	E	41800	41800	45967	F	1.10	41800	41800	45891	F	1.10	48352	F	1.16	53675	F	1.28

Appendix A. Existing Conditions and Future Forecasted Level of Service (LOS) and Volume to Capacity (V/C) Tables

239	SR 434	Rangeline Rd.	Palm Springs Dr.	E	62900	62900	46009	C	0.73	62900	62900	54319	C	0.86	57231	C	0.91	63533	F	1.01
240	SR 434	Palm Springs Dr.	Raymond Ave.	E + 10%	62900	69200	43337	C	0.63	62900	69200	54338	C	0.79	57251	C	0.83	63554	E	0.92
241	SR 434	Raymond Ave.	I-4	E + 10%	53400	58700	53486	E	0.91	53400	58700	60257	F	1.03	63488	F	1.08	70478	F	1.20
242	SR 434	I-4	Douglas Ave.	E + 10%	53400	58700	53443	E	0.91	53400	58700	65298	F	1.11	68799	F	1.17	76374	F	1.30
243	SR 434	Douglas Ave.	Wekiva Springs Rd.	E + 10%	62900	69200	61614	D	0.89	62900	69200	64311	E	0.93	67759	E	0.98	75219	F	1.09
244	SR 434	Wekiva Springs Rd.	Sand Lake Rd.	E + 10%	41800	46000	32795	C	0.71	41800	46000	41547	D	0.90	43775	E	0.95	48595	F	1.06
245	SR 434	Sand Lake Rd.	SR 436	E	41800	41800	34813	C	0.83	41800	41800	39379	C	0.94	41490	D	0.99	46059	F	1.10
246	SR 434	SR 436	Orange County Line (W)	E	62900	62900	48871	C	0.78	62900	62900	47112	C	0.75	49637	C	0.79	55103	C	0.88
247	SR 436	Orange County Line	Howell Branch Rd.	E	62900	62900	51939	C	0.83	62900	62900	60081	C	0.96	63302	F	1.01	70271	F	1.12
248	SR 436	Howell Branch Rd.	Red Bug Lake Rd.	E	62900	62900	65592	F	1.04	62900	62900	58776	C	0.93	61928	D	0.98	68746	F	1.09
249	SR 436	Red Bug Lake Rd.	US 17/92	E	62900	62900	73686	F	1.17	62900	62900	73264	F	1.16	77192	F	1.23	85691	F	1.36
250	SR 436	US 17/92	Ronald Reagan Blvd.	E + 10%	62900	69200	46657	C	0.67	62900	69200	45782	C	0.66	48236	C	0.70	53547	C	0.77
251	SR 436	Ronald Reagan Blvd.	Maitland Ave.	E + 10%	62900	69200	51492	C	0.74	62900	69200	62749	D	0.91	66123	E	0.96	73392	F	1.06
252	SR 436	Maitland Ave.	Palm Springs Dr.	E + 10%	84100	92500	57950	C	0.63	62900	69200	68232	E	0.99	71891	F	1.04	79807	F	1.15
253	SR 436	Palm Springs Dr.	Northlake Blvd.	E + 10%	84100	92500	65166	C	0.70	84100	92500	70851	C	0.77	74650	C	0.81	82869	D	0.90
254	SR 436	Northlake Blvd.	I-4	E + 10%	84100	92500	72602	C	0.78	84100	92500	80339	C	0.87	84646	E	0.92	93966	F	1.02
255	SR 436	I-4	Wymore Rd. / Douglas Ave.	E + 10%	71500	78700	67682	D	0.86	71500	78700	78124	E	0.99	82312	F	1.05	91376	F	1.16
256	SR 436	Wymore Rd. / Douglas Ave.	Lynchfield Ave.	E + 10%	84100	92500	59751	C	0.65	84100	92500	68153	C	0.74	71807	C	0.78	79713	C	0.86
257	SR 436	Lynchfield Ave.	SR 434	E + 10%	84100	92500	58630	C	0.63	84100	92500	44601	C	0.48	46991	C	0.51	52166	C	0.56
258	SR 436	SR 434	Bear Lake Rd.	E + 10%	62900	69200	53553	C	0.77	62900	69200	63093	E	0.91	66476	E	0.96	73795	F	1.07
259	SR 436	Bear Lake Rd.	Hunt Club Blvd.	E	62900	62900	56065	C	0.89	62900	62900	64462	F	1.02	67918	F	1.08	75396	F	1.20
260	SR 436	Hunt Club Blvd.	Orange County Line	E	62900	62900	52834	C	0.84	62900	62900	49528	C	0.79	52183	C	0.83	57929	C	0.92
261	SR 46	Lake County Line	Orange Blvd.	E + 20%	18600	22300	18175	D	0.82	62900	75500	25244	C	0.33	26597	C	0.35	29525	C	0.39
262	SR 46	Orange Blvd.	Lake Forest Blvd.	E + 10%	41800	46000	N/A	N/A	N/A	62900	69200	28215	C	0.41	29728	C	0.43	33001	C	0.48
263	SR 46	Lake Forest Blvd.	I-4	E + 10%	41800	46000	N/A	N/A	N/A	62900	69200	41890	C	0.61	44136	C	0.64	48996	C	0.71
264	SR 46	I-4	Rinehart Rd.	D	62900	62900	43743	C	0.70	62900	62900	36403	C	0.58	38355	C	0.61	42578	C	0.68
265	SR 46	Rinehart Rd.	Upsala Rd.	D	62900	62900	38272	C	0.61	62900	62900	38562	C	0.61	40630	C	0.65	45103	C	0.72
266	SR 46	Upsala Rd.	Persimmon Ave.	D	41800	41800	35906	C	0.86	41800	41800	18020	C	0.43	18986	C	0.45	21076	C	0.50
267	SR 46	Persimmon Ave.	US 17/92	E + 10%	41800	46000	23218	C	0.50	41800	46000	13954	C	0.30	14702	C	0.32	16321	C	0.35
268	SR 46	US 17/92	Sanford Ave.	E + 20%	35500	42600	24739	D	0.58	35500	42600	36824	E	0.86	38798	E	0.91	43070	F	1.01
269	SR 46	Sanford Ave.	Mellonville Ave.	E + 20%	41800	50200	27928	C	0.56	41800	50200	36641	C	0.73	38605	C	0.77	42856	E	0.85

Appendix A. Existing Conditions and Future Forecasted Level of Service (LOS) and Volume to Capacity (V/C) Tables

270	SR 46	Mellonville Ave.	Beardall Ave.	E	41800	41800	24538	C	0.59	41800	41800	24442	C	0.58	25753	C	0.62	28588	C	0.68
271	SR 46	Beardall Ave.	SR 415	E	41800	41800	15204	C	0.36	41800	41800	23169	C	0.55	24411	C	0.58	27099	C	0.65
272	SR 46	SR 415	Osceola Rd.	E	18600	18600	14939	C	0.80	18600	18600	29106	F	1.56	30667	F	1.65	34043	F	1.83
273	SR 46	Osceola Rd.	CR 426	D	18600	18600	13086	C	0.70	18600	18600	22981	F	1.24	24213	F	1.30	26879	F	1.45
274	SR 46	CR 426	Volusia County Line	D	18600	18600	7906	C	0.43	18600	18600	18065	D	0.97	19034	F	1.02	21130	F	1.14
275	Tuskawilla Road	SR 426	Dike Rd.	E + 10%	37800	41600	28764	C	0.69	37800	41600	34522	C	0.83	36373	D	0.87	40378	E	0.97
276	Tuskawilla Road	Dike Rd.	Red Bug Lake Rd.	E + 10%	56900	62600	30879	C	0.49	56900	62600	35418	C	0.57	37317	C	0.60	41426	C	0.66
277	Tuskawilla Road	Red Bug Lake Rd.	Eagle Blvd.	E + 10%	37800	41600	35839	C	0.86	37800	41600	40315	E	0.97	42477	F	1.02	47154	F	1.13
278	Tuskawilla Road	Eagle Blvd.	E Lake Dr.	E + 10%	37800	41600	35759	C	0.86	37800	41600	42789	F	1.03	45083	F	1.08	50046	F	1.20
279	Tuskawilla Road	E Lake Dr.	Dyson Dr.	E + 10%	37800	41600	27296	C	0.66	37800	41600	27643	C	0.66	29125	C	0.70	32332	C	0.78
280	Tuskawilla Road	Dyson Dr.	Winter Springs Blvd.	E	37800	37800	23365	C	0.62	37800	37800	24927	C	0.66	26263	C	0.69	29155	C	0.77
281	Tuskawilla Road	Winter Springs Blvd.	Trotwood Blvd.	E	37800	37800	20748	C	0.55	37800	37800	25668	C	0.68	27044	C	0.72	30022	C	0.79
282	Tuskawilla Road	Trotwood Blvd.	SR 434	E	37800	37800	21241	C	0.56	37800	37800	18954	C	0.50	19971	C	0.53	22169	C	0.59
283	US 17-92	Orange County Line	Lake of the Woods Blvd.	E + 10%	62900	69200	58021	C	0.84	62900	69200	59447	C	0.86	62635	D	0.91	69531	F	1.00
284	US 17-92	Lake of the Woods Blvd.	SR 436	E + 10%	62900	69200	59279	C	0.86	62900	69200	63088	E	0.91	66471	E	0.96	73789	F	1.07
285	US 17-92	SR 436	Triplet Lake Dr.	E	62900	62900	54982	C	0.87	62900	62900	59399	C	0.94	62584	D	0.99	69474	F	1.10
286	US 17-92	Triplet Lake Dr.	Seminola Blvd. / Dogtrack Rd.	E	62900	62900	54555	C	0.87	62900	62900	54806	C	0.87	57745	C	0.92	64103	F	1.02
287	US 17-92	Seminola Blvd. / Dogtrack Rd.	SR 434	E + 10%	62900	69200	51175	C	0.74	62900	69200	61177	C	0.88	64457	E	0.93	71554	F	1.03
288	US 17-92	SR 434	Shepard Rd.	E + 10%	62900	69200	39847	C	0.58	62900	69200	55211	C	0.80	58171	C	0.84	64576	E	0.93
289	US 17-92	Shepard Rd.	SR 419	E + 10%	62900	69200	39987	C	0.58	62900	69200	53035	C	0.77	55879	C	0.81	62031	D	0.90
290	US 17-92	SR 419	Ronald Reagan Blvd.	E + 10%	62900	69200	32097	C	0.46	62900	69200	68064	E	0.98	71713	F	1.04	79609	F	1.15
291	US 17-92	Ronald Reagan Blvd.	Lake Mary Blvd.	E + 10%	62900	69200	22744	C	0.33	62900	69200	57108	C	0.83	60170	C	0.87	66794	E	0.97
292	US 17-92	Lake Mary Blvd.	Airport Blvd.	E	41800	41800	N/A	N/A	N/A	41800	41800	39164	C	0.94	41264	D	0.99	45807	F	1.10
293	US 17-92	Airport Blvd.	Park Dr.	E	41800	41800	22239	C	0.53	41800	41800	33939	C	0.81	35758	C	0.86	39695	C	0.95
294	US 17-92	Park Dr.	CR 46A	E + 20%	41800	50200	22239	C	0.44	41800	50200	20501	C	0.41	21600	C	0.43	23979	C	0.48
295	US 17-92	CR 46A	SR 46	E + 20%	41800	50200	26029	C	0.52	41800	50200	26194	C	0.52	27598	C	0.55	30636	C	0.61
296	US 17-92	SR 46	Persimmon Ave.	E + 20%	41800	50200	8569	C	0.17	41800	50200	17613	C	0.35	18557	C	0.37	20601	C	0.41
297	US 17-92	Persimmon Ave.	Upsala Rd.	E + 20%	41800	50200	17009	C	0.34	41800	50200	34761	C	0.69	36624	C	0.73	40657	D	0.81
298	US 17-92	Upsala Rd.	Volusia County Line	D	41800	41800	36668	C	0.88	41800	41800	29037	C	0.69	30594	C	0.73	33962	C	0.81
299	US 441	Orange County Line (S)	Orange County Line (N)	E	41800	41800	30723	C	0.74	41800	41800	41354	D	0.99	43572	F	1.04	48369	F	1.16
300	Wekiva Springs Road	Orange County Line	Hunt Club Blvd.	E + 20%	16800	20200	31503	F	1.56	16800	20200	17380	E	0.86	18312	E	0.91	20328	F	1.01
301	Wekiva Springs Road	Hunt Club Blvd.	Fox Valley Dr.	E + 20%	14800	17800	22424	F	1.26	14800	17800	14342	E	0.81	15111	E	0.85	16775	E	0.94

Appendix A. Existing Conditions and Future Forecasted Level of Service (LOS) and Volume to Capacity (V/C) Tables

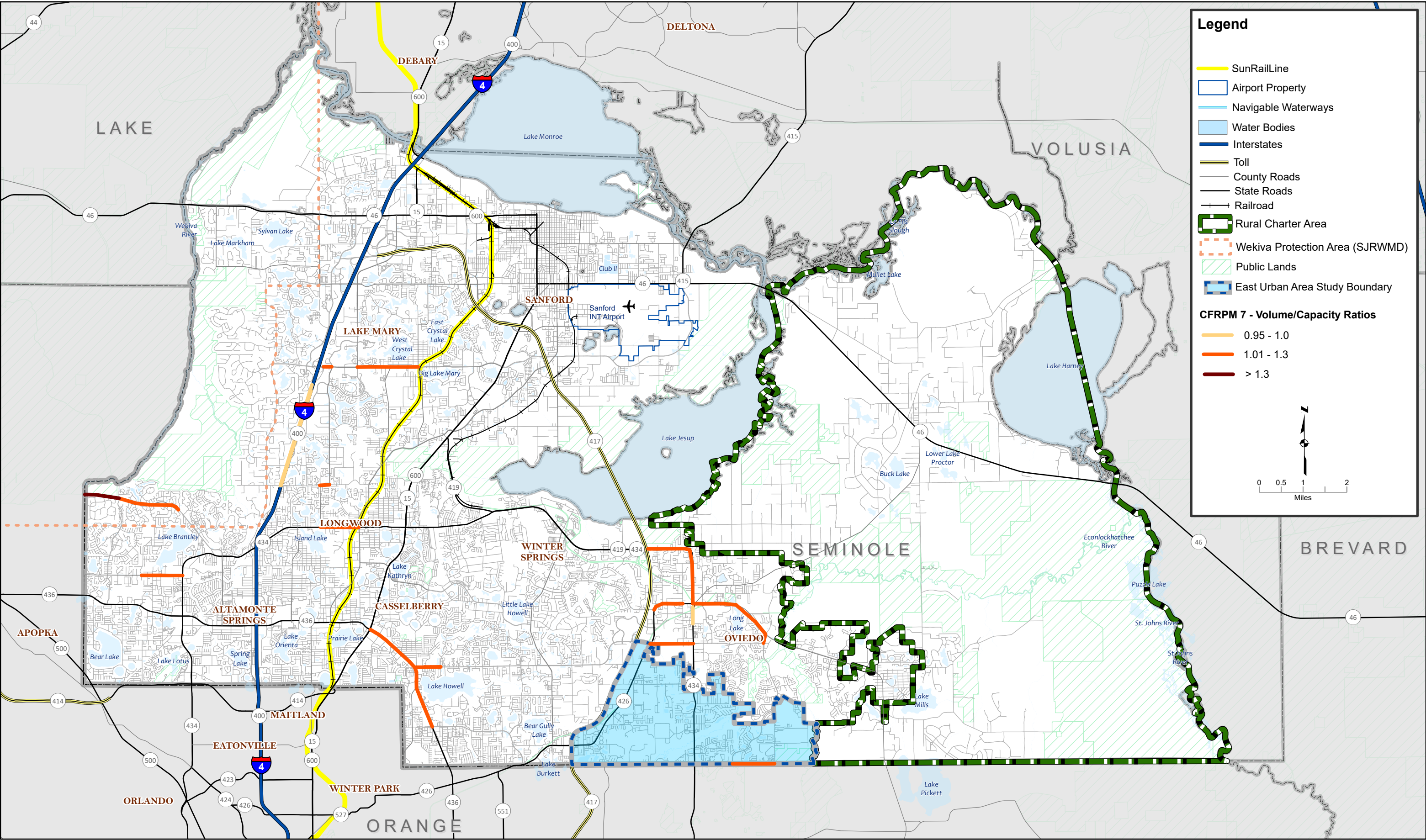
302	Wekiva Springs Road	Fox Valley Dr.	E Lake Brantley Dr.	E + 20%	32100	38500	28687	D	0.75	32100	38500	23950	D	0.62	25234	D	0.66	28012	D	0.73
303	Wekiva Springs Road	E Lake Brantley Dr.	SR 434	E + 10%	37800	41600	30312	C	0.73	37800	41600	31015	C	0.75	32678	C	0.79	36276	D	0.87
304	Winter Park Drive	SR 436 / Red Bug Lake Rd.	Wilshire Dr.	E	14800	14800	10489	D	0.71	14800	14800	8657	D	0.58	9121	D	0.62	10125	D	0.68
305	Winter Park Drive	Wilshire Dr.	Queen's Mirror Cir	E	14800	14800	10233	D	0.69	14800	14800	9698	D	0.66	10218	D	0.69	11343	D	0.77
306	Winter Park Drive	Queen's Mirror Cir	Crystal Bowl Cir	E	14800	14800	10556	D	0.71	14800	14800	7869	D	0.53	8291	D	0.56	9204	D	0.62
307	Winter Park Drive	Crystal Bowl Cir	Seminola Blvd.	E	14800	14800	11244	D	0.76	14800	14800	9255	D	0.63	9751	D	0.66	10824	D	0.73
308	Wymore Road	Orange County Line	Lake Destiny Rd.	E + 20%	14800	17800	7639	D	0.43	14800	17800	6148	C	0.35	6477	C	0.36	7191	D	0.40
309	Wymore Road	Lake Destiny Rd.	Spring Lake Hills Dr.	E + 20%	14800	17800	9736	D	0.55	14800	17800	8961	D	0.50	9442	D	0.53	10481	D	0.59

Appendix B

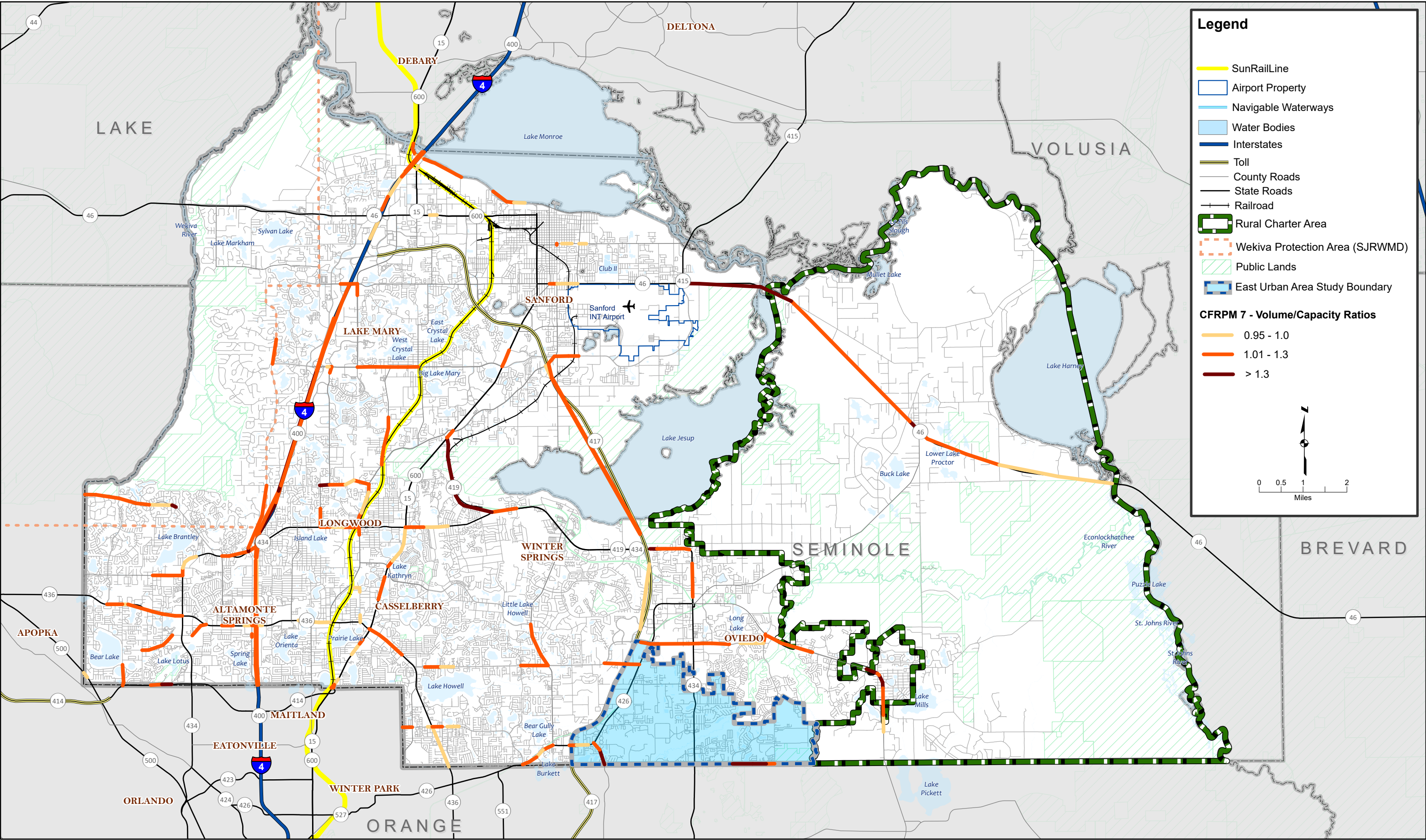
Volume to Capacity Ratio Maps

Appendix B. Volume to Capacity Ratio Maps

Map Number	Title
1	2022 Volume to Capacity Ratios
2	2030 Volume to Capacity Ratios
3	2035 Volume to Capacity Ratios
4	2045 Volume to Capacity Ratios

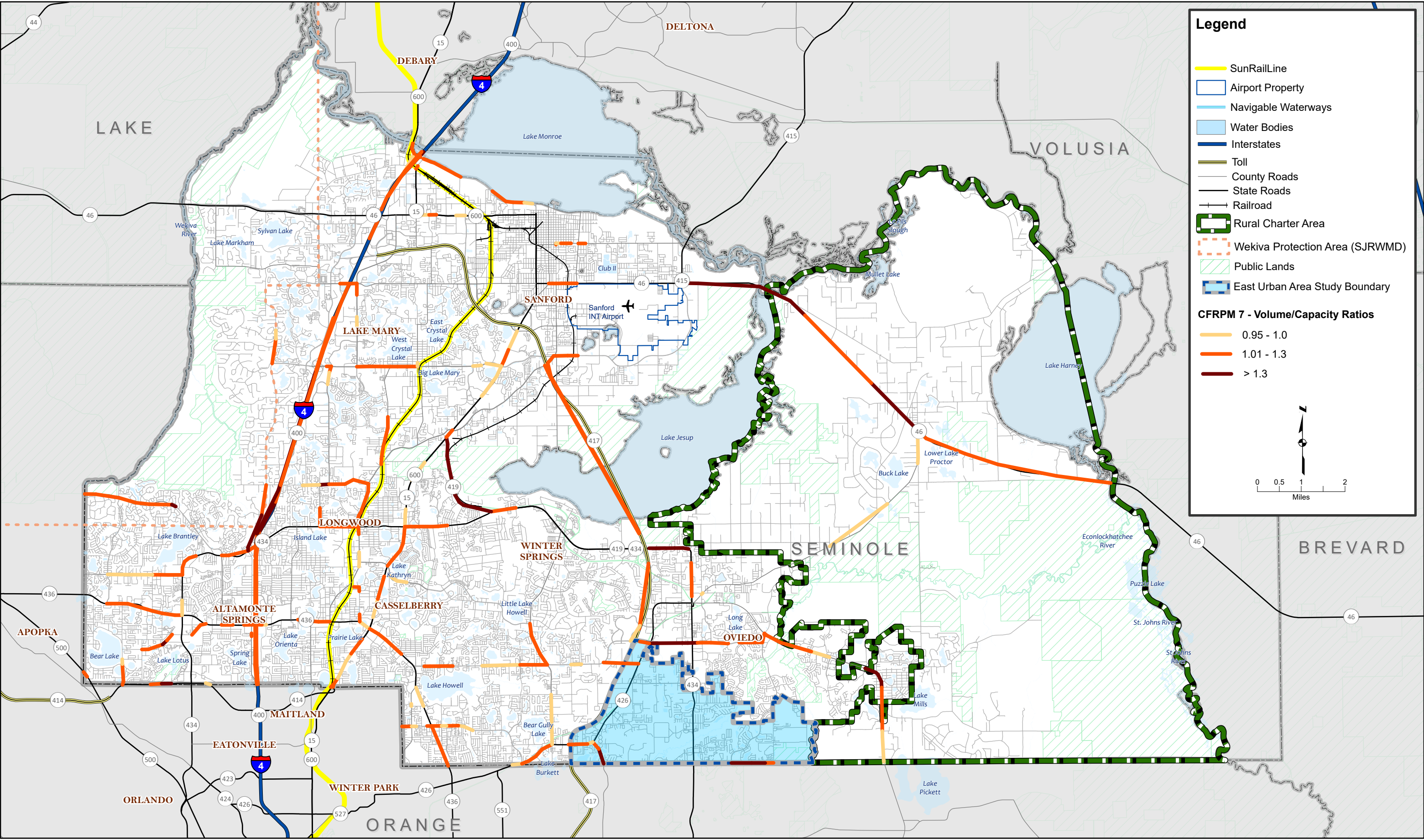


MAP 1
2022 Roadway Volume/Capacity Ratios
Seminole County 2045
Transportation Mobility Plan



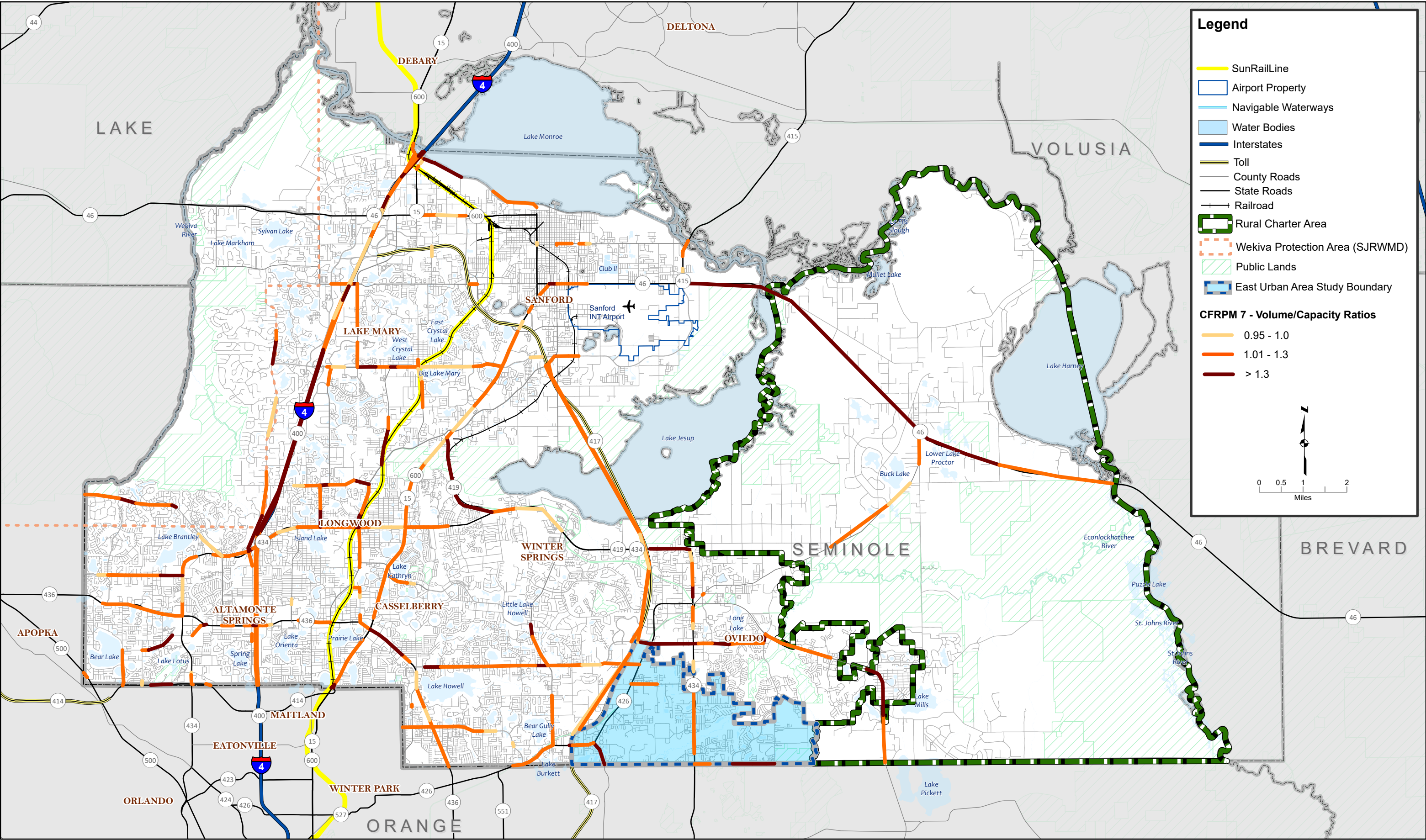
Notes:
1. Data Source: Seminole County 2022
2. Central Florida Regional Planning Model 7
3. FDOT 2022

MAP 2
2030 Roadway Volume/Capacity Ratios
Seminole County 2045
Transportation Mobility Plan



Notes:
1. Data Source: Seminole County 2022
2. Central Florida Regional Planning Model 7
3. FDOT 2022

MAP 3
2035 Roadway Volume/Capacity Ratios
Seminole County 2045
Transportation Mobility Plan



Notes:
1. Data Source: Seminole County 2022
2. Central Florida Regional Planning Model 7
3. FDOT 2022

MAP 4
2045 Roadway Volume/Capacity Ratios
Seminole County 2045
Transportation Mobility Plan

Appendix C
Travel Time and Delay Study –
LOS F Segments

Seminole County 2045 Transportation Mobility Plan
Existing Conditions & Future Traffic Forecast Technical Memorandum

Appendix C. Travel Time and Delay Study – LOS F Segments

Roadway & Direction	Segment	Speed Limit (MPH)	Distance (ft)	Traffic Control Device	Travel Time (s)	Stop Delay (s)	Roadway Class	Roadway Segment		Roadway Section	
								Average Speed (MPH)	LOS	Average Speed (MPH)	LOS
SR 46 EB	Wayside Dr. to Orange Blvd.	55	1769	Signal	156.2	110.8	I	7.7	F	7.7	F
SR 46 EB	Wayside Dr. to Orange Blvd.	55	1769	Signal	107.8	60	I	11.2	F	11.2	F
SR 46 EB	Town Center Blvd. to Rinehart Rd.	45	983	Signal	100.9	81.4	I	6.6	F	10.8	F
SR 46 EB	US 17/92 to Park Ave.	35	1669	Signal	967.1	934.4	II	1.2	F		
SR 46 EB	Park Ave. to Sanford Ave.	35	973	Signal	112.5	90.6	II	5.9	F	1.7	F
SR 46 EB	US 17/92 to Park Ave.	35	1669	Signal	344.9	301.3	II	3.3	F		
SR 46 EB	Park Ave. to Sanford Ave.	35	973	Signal	78.3	47.5	II	8.5	F	4.3	F
SR 46 EB	Beardall Ave. to SR 415*	50/55	3184	Signal	157.7	102.8	I	13.8	F	13.8	F
SR 46 WB	US 17/92 to Holly Ave.	40	664	SS Stop	33.8	22.4	I	13.4	F		
SR 46 WB	Central Park Dr. to Upsala Rd./CR 15	55/45	1701	Signal	121.3	67.7	I	9.6	F	20.6	D
SR 46 WB	Rinehart Rd. to Town Center Blvd.	45	983	Signal	48.7	31.6	I	13.8	F		
SR 46 WB	Lake Forest Blvd. to Orange Blvd.	50/55	3531	Signal	249.6	157.5	I	9.6	F	9.6	F
SR 434 EB	Wekiva Springs Ln. to Wekiva Springs Rd./Montgomery Rd.	45	1247	Signal	102.5	68.3	I	8.3	F	21.8	C

Seminole County 2045 Transportation Mobility Plan
Existing Conditions & Future Traffic Forecast Technical Memorandum

Appendix C. Travel Time and Delay Study – LOS F Segments

SR 434 EB	Orange Ave. to SR 436	45	1269	Signal	68.7	38.3	I	12.6	F	19.6	D
SR 434 EB	Wekiva Springs Ln. to Wekiva Springs Rd./Montgomery Rd.	45	1247	Signal	75.7	50.3	I	11.2	F	24.9	C
SR 434 EB	S. Wayman St. to US 17/92	45	2173	Signal	141.7	97.4	I	10.5	F	19.1	D
SR 434 EB	S. Wayman St. to US 17/92	45	2173	Signal	123.2	69.2	I	12	F	20.6	D
SR 434 EB	Doran Rd. to Tuskawilla Rd.	45	1423	Signal	83.4	57.7	I	11.6	F	31.5	B
SR 434 EB	Doran Rd. to Tuskawilla Rd.	45	1423	Signal	67.5	35	I	14.4	F	21	D
SR 434 WB	Gum St./Springs Blvd to Montgomery Rd./Wekiva Springs Rd.	45	598	Signal	28.7	15.8	I	14.2	F	30.9	C
SR 434 WB	San Sebastian Prado to SR 436	45	2419	Signal	132.9	81.5	I	12.4	F	20.5	D
SR 434 WB	San Sebastian Prado to SR 436	45	2419	Signal	157.2	109.8	I	10.5	F	18.2	D
SR 434 WB	Grant St. to CR 427/Ronald Reagan Blvd.	45/35	2629	Signal	184.5	126.4	I	9.7	F	16.6	E
SR 434 WB	Sun Shadow Dr. to US 17/92	45	1785	Signal	91.1	49.5	I	13.4	F	23.1	C
SR 434 WB	Grant St. to CR 427/Ronald Reagan Blvd.	45/35	2629	Signal	134.9	79.1	I	13.3	F	20.6	D
SR 434 WB	Tarrytown Tr./Roxboro Rd. to Raymond Ave.	45/35	2572	Signal	138.1	78.3	I	12.7	F	20.5	D

Seminole County 2045 Transportation Mobility Plan
Existing Conditions & Future Traffic Forecast Technical Memorandum

Appendix C. Travel Time and Delay Study – LOS F Segments

SR 434 WB	Raymond Ave. to I-4 (E. Ramps)	35	686	Signal	94.6	80.1	II	4.9	F	4.9	F
SR 434 WB	Alafaya Woods Blvd. to Mitchell Hammock Rd.	45	2355	Signal	110.2	62.7	I	14.6	F		
SR 434 WB	Alafaya Woods Blvd. to Mitchell Hammock Rd.	45	2355	Signal	132.1	71.7	I	12.2	F		
SR 436 EB	Grace Blvd. to Westmonte Dr.*	45	1081	Signal	66.4	36	I	11.1	F		
SR 436 EB	Line Dr. to Balmy Beach Dr.	45	1542	Signal	118.2	85.4	I	8.9	F		
SR 436 EB	Orange Ave. to Weathersfield Ave.	45	836	Signal	39.8	20	I	14.3	F		
SR 436 EB	Grace Blvd. to Westmonte Dr.*	45	1081	Signal	61.9	40.8	I	11.9	F		
SR 436 EB	North Lake Blvd. to Hattaway Dr.	40	692	Signal	32	15	I	14.7	F		
SR 436 EB	Boston Ave. to CR 427/Maitland Ave.	40	1685	Signal	90.8	48.5	I	12.7	F	16.2	E
SR 436 EB	Anchor Rd. to US 17/92	40	1607	Signal	115.8	68.3	I	9.5	F	15.8	E
SR 436 EB	Plaza Entrance to Oxford Rd.	40	506	Signal	25.7	15	I	13.4	F		
SR 436 WB	San Sebastian Prado to SR 434	45	1495	Signal	98	71.2	I	10.4	F	19.7	D
SR 436 WB	Harley Lester Ln. to Bear Lake Rd.	45	753	Signal	37.1	17.5	I	13.8	F	25.1	C

Seminole County 2045 Transportation Mobility Plan
Existing Conditions & Future Traffic Forecast Technical Memorandum

Appendix C. Travel Time and Delay Study – LOS F Segments

SR 436 WB	Sausalito Blvd. to Red Bug Lake Rd.	45	963	Signal	44.3	25	I	14.8	F	25.7	C
SR 436 WB	Prarie Lake Dr. to CR 427/Ronald Reagan Blvd.	40	1549	Signal	118.5	78.3	I	8.9	F	21.4	D
SR 436 WB	Winter Woods Blvd. to Howell Branch Rd.	50	2469	Signal	129.1	76.3	I	13	F	20.6	D
SR 436 WB	Sausalito Blvd. to Red Bug Lake Rd.	45	963	Signal	95.7	73.8	I	6.9	F	15.4	E
SR 436 WB	Prarie Lake Dr. to CR 427/Ronald Reagan Blvd.	40	1549	Signal	174.5	130.2	I	6.1	F	15.8	E
SR 436 WB	Mall Entrance to Essex St.	40	646	Signal	44.2	30.7	I	10	F		
US 17-92 SB	County Home Rd. to Weldon Blvd.*	50	3324	Signal	156.5	94.3	I	14.5	F		
US 17-92 SB	Weldon Blvd. to CR 427*	50	996	Signal	65.8	49	I	10.3	F	13.2	F
US 17-92 SB	Orange Ave. to SR 434	45	1063	Signal	67.7	40	I	10.7	F	26.9	C
US 17-92 SB	County Home Rd. to Weldon Blvd.*	50	3324	Signal	524.7	477.1	I	4.3	F		
US 17-92 SB	Orange Ave. to SR 434	45	1063	Signal	50.9	25	I	14.2	F	32.3	B
US 17-92 SB	Volusia Co. Line to I-4 WB Ramps	50	607	Signal	49.3	37.5	I	8.4	F		
US 17-92 SB	I-4 WB Ramps to CR 15	45	1411	Signal	148.7	114.2	I	6.5	F	7	F
I-4 EB	Wymore Rd. to SR 436*	60	7680	N/A	418.4	0	I	12.5	F	12.8	F
I-4 EB	SR 436 to Central Pkwy.*	60	3914	N/A	365.4	0	I	7.3	F		
I-4 EB	Central Pkwy. to SR 434*	60	6545	N/A	374.3	0	I	11.9	F	9.6	F

Seminole County 2045 Transportation Mobility Plan
Existing Conditions & Future Traffic Forecast Technical Memorandum

Appendix C. Travel Time and Delay Study – LOS F Segments

I-4 EB	CR 431/Orange Blvd. to US 17/92	65	1557	N/A	100.7	0	I	10.5	F		
I-4 EB	US 17/92 to Volusia County Line	65	1193	N/A	88.5	0	I	9.2	F	23.6	C
I-4 EB	CR 46A to SR 46	65	9930	N/A	457	91.5	I	14.8	F		
I-4 WB	Volusia County Line to US 17/92	65	1175	N/A	83.6	0	I	9.6	F		
I-4 WB	Wymore Rd. to Orange County Line*	60	292	N/A	21.6	16.7	I	9.2	F	42.6	A
I-4 WB	Volusia County Line to US 17/92	65	1175	N/A	156.4	0	I	5.1	F		
I-4 WB	US 17/92 to CR 431/Orange Blvd.	65	1512	N/A	73.7	0	I	14	F		
I-4 WB	Central Pkwy. to SR 436*	60	3914	N/A	333.4	0	I	8	F	18.1	D
SR 426 EB	Old Howell Branch Rd. to Hall Rd./Howell Branch Rd.	45	1267	Signal	156.6	107.4	I	5.5	F	5.5	F
SR 426 EB	Tuskawilla Rd. to Deep Lake Rd.	45	1373	Signal	66.6	19.8	I	14.1	F		
SR 426 EB	Slava Rd. to Red Bug Lake Rd./Mtchell Hammock Rd.	45	3062	Signal	195	114.6	I	10.7	F	15.7	E
SR 426 EB	Lake Jessup Ave. to SR 434	30	1320	Signal	100.8	52.2	II	8.9	F	8.9	F
SR 426 WB	Ovedo Mrktpl. Blvd. to Red Bug Lake Rd./Mtchell Hammock Rd.	45	2289	Signal	130.2	85.4	I	12	F	16.5	E

Seminole County 2045 Transportation Mobility Plan
Existing Conditions & Future Traffic Forecast Technical Memorandum

Appendix C. Travel Time and Delay Study – LOS F Segments

SR 426 WB	Dean Rd. to SR 417 (E. Ramps)	45	2854	Signal	136.4	71.2	I	14.3	F	14.3	F
SR 426 WB	Trnty Prep. Sch. to Hall Rd./Howell Branch Rd.	45	2118	Signal	113.6	71.1	I	12.7	F	16.4	E
SR 414 WB	SR 434 to Magnolia Holmes Rd.	55/50	3873	Signal	193.3	60.1	I	13.7	F	13.7	F
Airport Boulevard/MLK Jr. Boulevard - EB	Airport Blvd. to CR 46A/25th St.	45	1105	Signal	74.2	46.7	I	10.2	F	33.8	B
Airport Boulevard/MLK Jr. Boulevard - EB	Airport Blvd. to CR 46A/25th St.	45	1105	Signal	92	61.5	I	8.2	F	22.7	D
Airport Boulevard/MLK Jr. Boulevard – WB	Windleshore Way to US 17/92	35	1264	Signal	93.6	60	II	9.2	F	21.1	C
Airport Boulevard/MLK Jr. Boulevard - WB	Windleshore Way to US 17/92	35	1264	Signal	141	109.9	II	6.1	F	17.6	C
Airport Boulevard/MLK Jr. Boulevard – WB	Placid Lake Dr. to Old Lake Mary Rd.	45	954	Signal	43.9	24.8	I	14.8	F		
Airport Boulevard/MLK Jr. Boulevard – WB	Old Lake Mary Rd. to CR 46A/25th St.	45	2484	Signal	115.2	71	I	14.7	F	24.4	C

Seminole County 2045 Transportation Mobility Plan
Existing Conditions & Future Traffic Forecast Technical Memorandum

Appendix C. Travel Time and Delay Study – LOS F Segments

CR 15 NB	CR 46A W to CR 46A E.	40	519	Signal	34.4	19.6	I	10.3	F	10.3	F
CR 15 SB	Briarwood Dr. to CR 46A E.	40	826	Signal	44.3	25.3	I	12.7	F	28.3	C
CR 15 SB	Crystal Lake Dr. to Lake Mary Blvd.	35	998	Signal	100.5	72.1	II	6.8	F	18.3	C
CR 15 SB	Briarwood Dr. to CR 46A E.	40	826	Signal	60.8	33.3	I	9.3	F	24.6	C
CR 15 SB	CR 46A E. to CR 46A W.	40	515	Signal	61.8	41.9	I	5.7	F	5.7	F
Central Parkway WB	Palm Springs Dr. to One Center Blvd.	30	847	SS Stop	1264.8	1245.7	II	0.5	F		
CR 419 EB	SR 434 to CR 426	35	253	Signal	34.9	19	II	4.9	F	4.9	F
CR 427 (Ronald Reagan Boulevard) NB	Orienta Ave. to SR 436	35	714	Signal	111	98.1	II	4.4	F	4.4	F
CR 427 (Ronald Reagan Boulevard) NB	North St. to Dog Track Rd.	40	593	Signal	29.3	11.3	I	13.8	F	13.8	F
CR 427 (Ronald Reagan Boulevard) NB	Silkwood Ct. to US 17/92	45	1512	Signal	108.4	75.6	I	9.5	F	22.1	D
CR 427 (Ronald Reagan Boulevard) NB	Orienta Ave. to SR 436	35	714	Signal	62.3	43.3	II	7.8	F	7.8	F
CR 427 (Ronald Reagan Boulevard) NB	Wildmere Ave. to SR 434	40	1995	Signal	200.3	158.3	I	6.8	F	13.2	F

Seminole County 2045 Transportation Mobility Plan
Existing Conditions & Future Traffic Forecast Technical Memorandum

Appendix C. Travel Time and Delay Study – LOS F Segments

CR 427 (Ronald Reagan Boulevard) NB	Silkwood Ct. to US 17/92	45	1512	Signal	117.5	89.6	I	8.8	F	21.5	D
CR 427 (Ronald Reagan Boulevard) SB	Church Ave. to SR 434	35	1107	Signal	84.1	55.6	II	9	F	21.1	C
CR 427 (Ronald Reagan Boulevard) SB	1st St./Merritt St. to SR 436	40	1920	Signal	104.9	65.8	I	12.5	F	26.5	C
CR 427 (Ronald Reagan Boulevard) SB	Palmetto Ave. to Church Ave.	35	900	Signal	76.3	52.5	II	8	F		
CR 427 (Ronald Reagan Boulevard) SB	Church Ave. to SR 434	35	1107	Signal	140.8	101.7	II	5.4	F	13.4	D
CR 427 (Ronald Reagan Boulevard) SB	1st St./Merritt St. to SR 436	40	1920	Signal	134.9	91.4	I	9.7	F	23.4	C
CR 46A EB	I-4 WB Ramps to I-4 EB Ramps	40	1463	Signal	79.1	37.5	I	12.6	F		
CR 46A EB	SR 417 NB to Airport Blvd.	40	1037	Signal	60.1	32.4	I	11.8	F	30.8	C
CR 46A EB	Grenada Ave. to US 17/92	45/30	996	Signal	72.2	50	I	9.4	F	23	D
CR 46A WB	US 17/92 to Grenada Ave.	30/45	996	SS Stop	123.7	105	II	5.5	F		
CR 46A WB	Bright Meadow Dr. to Rinehart Rd.	40	2924	Signal	379.7	293.3	I	5.3	F	15.6	E
CR 46A WB	Rinehart Rd. to I-4 EB Ramps	40	807	Signal	37.1	13.3	I	14.8	F		

Seminole County 2045 Transportation Mobility Plan
Existing Conditions & Future Traffic Forecast Technical Memorandum

Appendix C. Travel Time and Delay Study – LOS F Segments

Dodd Road NB	Gallagher Loop/Heritage Commons Dr. to Red Bug Lake Rd.	40	1175	Signal	83.3	56	I	9.6	F	21.2	D
Dodd Road NB	Gallagher Loop/Heritage Commons Dr. to Red Bug Lake Rd.	40	1175	Signal	100.8	70.9	I	7.9	F	18.9	D
Dodd Road SB	St. Lucie Dr. to Red Bug Lake Rd.	30	1709	Signal	121.4	76.4	II	9.6	F	16.7	D
Dog Track Road/Seminola Boulevard/Lake Drive EB	Northland Church to US 17/92	40	1044	Signal	55.4	33.8	I	12.8	F	27.8	C
Dog Track Road/Seminola Boulevard/Lake Drive EB	Northland Church to US 17/92	40	1044	Signal	97.2	72.7	I	7.3	F	19.7	D
Dog Track Road/Seminola Boulevard/Lake Drive WB	Button Rd. to US 17-92	40	1451	Signal	110.3	78.3	I	9	F	24.7	C
Douglas Avenue NB	Commerce Park to SR 434	35	813	Signal	122.2	104.2	II	4.5	F	9.3	F
Douglas Avenue NB	Commerce Park to SR 434	35	813	Signal	120	97	II	4.6	F	9.5	F
Douglas Avenue SB	Citrus St. to Central Pkwy.*	35	671	Signal	69.9	52.8	II	6.5	F	20.4	C
Douglas Avenue SB	Westmonte Dr. to SR 436 (Westmonte Dr.)	35	2637	Signal	330	135	II	5.4	F	5.4	F

Seminole County 2045 Transportation Mobility Plan
Existing Conditions & Future Traffic Forecast Technical Memorandum

Appendix C. Travel Time and Delay Study – LOS F Segments

Douglas Avenue SB	Citrus St. to Central Pkwy.*	35	671	Signal	53.3	33.7	II	8.6	F	22.6	B
Howell Branch Road EB	Lakemont Ave. to Lake Howell Rd.	40	1278	Signal	98.7	66.7	I	8.8	F		
Howell Branch Road EB	Plaza Entrance to SR 436	40	995	Signal	47.1	25.5	I	14.4	F	13.7	F
Howell Branch Road EB	Lakemont Ave. to Lake Howell Rd.	40	1278	Signal	85.7	48.5	I	10.2	F		
Howell Branch Road EB	Lake Howell Rd. to Plaza Entrance	40	1638	Signal	80.3	35.8	I	13.9	F		
Howell Branch Road EB	Plaza Entrance to SR 436	40	995	Signal	65	48	I	10.4	F	11.6	F
International Parkway SB	SR 417 to CR 46A	45	3696	Signal	182.4	108	I	13.8	F	13.8	F
Lake Emma Road NB	Longwood Hills Rd. to Danbury Rd.	40	1495	SS Stop	243.5	217.9	I	4.2	F		
Lake Emma Road SB	Lake Mary Blvd. to Lake Mary Center	35	821	Signal	69.6	32.4	II	8	F	8	F
Lake Emma Road SB	Danbury Rd. to Longwood Hills Rd.	40	1478	Signal	193.2	118.8	I	5.2	F	16.8	E
Lake Mary Boulevard/SR 415 EB	Elem. School/4th St. to Country Club Rd.	45	657	Signal	40.8	22.6	I	11	F	20.3	D
Lake Mary Boulevard/SR 415 EB	Live Oak Blvd to US 17/92	45	1247	Signal	93.8	66.4	I	9.1	F	13	F

Seminole County 2045 Transportation Mobility Plan
Existing Conditions & Future Traffic Forecast Technical Memorandum

Appendix C. Travel Time and Delay Study – LOS F Segments

Lake Mary Boulevard/SR 415 EB	SR 417 NB Ramps to CR 427	45	1117	Signal	88.6	61.7	I	8.6	F		
Lake Mary Boulevard/SR 415 EB	Heathrow Blvd. to International Pkwy.	45	1021	Signal	77.3	59	I	9	F		
Lake Mary Boulevard/SR 415 EB	Live Oak Blvd to US 17/92	45	1247	Signal	128.9	96.7	I	6.6	F	10	F
Lake Mary Boulevard/SR 415 EB	SR 417 NB Ramps to CR 427	45	1117	Signal	106.5	78.2	I	7.1	F		
Lake Mary Boulevard/SR 415 WB	S. Sanford Ave to CR 427	45	356	Signal	44.1	28.3	I	5.5	F		
Lake Mary Boulevard/SR 415 WB	Palmetto St. to Country Club Rd.	45	1481	Signal	80.1	40.6	I	12.6	F	20.5	D
Lake Mary Boulevard/SR 415 WB	Lake Emma Rd. to I-4 EB Ramps	45	1144	Signal	75.9	63.8	I	10.3	F	10.3	F
Lake Mary Boulevard/SR 415 WB	I-4 WB Ramps to International Pkwy.	45	822	Signal	45.2	25	I	12.4	F		
Lake Mary Boulevard/SR 415 WB	CR 427 to SR 417 NB Ramps	45	1117	Signal	53.4	29.2	I	14.3	F		

Seminole County 2045 Transportation Mobility Plan
Existing Conditions & Future Traffic Forecast Technical Memorandum

Appendix C. Travel Time and Delay Study – LOS F Segments

Lake Mary Boulevard/SR 415 WB	Palmetto St. to Country Club Rd.	45	1481	Signal	142.1	96.5	I	7.1	F	12.9	F
Lake Mary Boulevard/SR 415 WB	Longwood-Lk.Mary Rd. to Forest Blvd.	45	276	Signal	12.6	4.2	I	14.9	F		
Lake Mary Boulevard/SR 415 WB	Sun Dr. to Lake Mary Center	45	836	Signal	39.7	15.8	I	14.3	F		
Lockwood Boulevard SB	CR 419 to Mitchell Hammock Rd.	35	1269	Signal	102.5	69.2	II	8.4	F	8.4	F
McCulloch Road EB	Riverton Dr. to SR 434	35	3438	Signal	450.5	355.7	II	5.2	F	7.5	F
McCulloch Road WB	Seminole Ave. to SR 434	45	2041	Signal	96.8	51.7	I	14.4	F	23.7	C
McCulloch Road WB	Seminole Ave. to SR 434	45	2041	Signal	122.1	77.2	I	11.4	F	20.3	D
Mitchell Hammock Road EB	Lake Jessup Ave. to SR 434	45	2064	Signal	143.4	93.3	I	9.8	F	19.5	D
Mitchell Hammock Road EB	Kingsbridge Dr./Lake Rogers Blvd. to Alafaya Woods Blvd./Reformation Dr.	45	1479	Signal	80.2	48.8	I	12.6	F		
Mitchell Hammock Road EB	Lake Jessup Ave. to SR 434	45	2064	Signal	228	151.7	I	6.2	F	12.2	F

Seminole County 2045 Transportation Mobility Plan
Existing Conditions & Future Traffic Forecast Technical Memorandum

Appendix C. Travel Time and Delay Study – LOS F Segments

Mitchell Hammock Road WB	Oviedo Blvd. to City Plaza Way/Clara Lee Evans Way	45	1140	Signal	55.1	29.7	I	14.1	F		
Mitchell Hammock Road WB	City Plaza Way/Clara Lee Evans Way to SR 434	45	1337	Signal	71.4	46.2	I	12.8	F	13.3	F
Montgomery Road NB	Tamarack St. to Central Pkwy.	40	1197	Signal	72.2	46.3	I	11.3	F	23.1	C
Montgomery Road NB	Plaza Entrance to SR 434	40	746	Signal	37.2	26.7	I	13.7	F	27.5	C
Red Bug Lake Road WB	SR 417 (E. Ramps) to SR 417 (W. Ramps)	45	833	Signal	48.3	20.6	I	11.8	F		
Red Bug Lake Road WB	Red Willow Plaza to Tuskawilla Rd.	45	472	Signal	27.8	14.2	I	11.6	F	34.3	B
Red Bug Lake Road WB	Red willow Plaza to Tuskawilla Rd.	45	472	Signal	58.9	52.3	I	5.5	F	26.4	C
Rinehart Road NB	Anderson Ln. to Primera Blvd.	45	432	Signal	35.5	26	I	8.3	F		
Rinehart Road NB	SR 417 (S. Ramps) to SR 417 (N. Ramps)	45	1139	Signal	62.7	32.4	I	12.4	F		
Rinehart Road SB	SR 46 to St. Johns Pkwy.	45	2247	Signal	146.2	82.8	I	10.5	F		
Sanford Avenue NB	25th Pl. to SR 46	40	813	Signal	81.8	58.3	I	6.8	F	24.6	C
Sanford Avenue NB	25th Pl. to SR 46	40	813	Signal	44.3	19.9	I	12.5	F	31.4	B
Sanford Avenue SB	1st St. to 6th St.	15	1660	SS Stop	500.7	386.7	II	2.3	F	2.3	F

Seminole County 2045 Transportation Mobility Plan
Existing Conditions & Future Traffic Forecast Technical Memorandum

Appendix C. Travel Time and Delay Study – LOS F Segments

Sanford Avenue SB	6th St. to Celery Ave.	25/35	2145	Signal	102	46.7	I	14.3	F		
Tuskawilla Road NB	SR 426/Aloma Ave. to Trail Crossing	45	635	Signal	79.6	0	I	5.4	F		
Tuskawilla Road SB	Dyson Dr. to E. Lake Dr.	45	525	Signal	33.4	19.2	I	10.7	F	31.7	B
Longwood Lake Mary Road NB	CR 427 to Joyful Blossom Pl.	40	1802	SS Stop	100.7	45.5	I	12.2	F		
CR 431 NB	Wayside Dr. to SR 46	40	1343	Signal	152	121.6	I	6	F	18.1	D
CR 431 NB	Wayside Dr. to SR 46	40	1343	Signal	165.7	130.6	I	5.5	F	18.4	D
CR 431 SB	Markham Rd. to CR 46A	40	2281	ML Stop	122.6	54.2	I	12.7	F	12.7	F
Greenway Blvd EB	Lake Emma Rd. to Greenford Dr.	30	2518	SS Stop	308.6	250	II	5.6	F		
Greenway Blvd EB	Lake Emma Rd. to Donegal Ave.	35	2443	SS Stop	174.4	121.3	II	9.6	F		
Lake Way Road WB	Longwood Lake Mary Rd. to Lake Park Dr.	30	1597	Signal	130.9	55.3	II	8.3	F		
Old Lake Mary Road NB	Casa Verde Blvd. to Airport Blvd.	35	1279	Signal	96	65.4	II	9.1	F		
Old Lake Mary Road NB	Casa Verde Blvd. to Airport Blvd.	35	1279	Signal	92	62.8	II	9.5	F		
Old Lake Mary Road SB	Country Club Rd. to CR 46A	35	833	Signal	94.3	62.1	II	6	F	6	F
Orange Avenue WB	SR 434 to Laurel St.	35	695	Signal	115.2	96	II	4.1	F		

Seminole County 2045 Transportation Mobility Plan
Existing Conditions & Future Traffic Forecast Technical Memorandum

Appendix C. Travel Time and Delay Study – LOS F Segments

Pearl Lake Causeway NB	Bunnell Rd. to N/S Pearl Lake Cswy.	30	2421	SS Stop	549.1	493.4	II	3	F	3	F
Tangerine Avenue NB	SR 426 to Citrus Ave.	25	1177	ML Stop	93.8	3.8	II	8.6	F		
Tangerine Avenue NB	SR 426 to Citrus Ave.	25	1177	ML Stop	102	3.7	II	7.9	F		
W Town Parkway EB	Shopping Plaza to SR 434	35	637	Signal	89.2	74.3	II	4.9	F	7.8	F
W Town Parkway EB	Shopping Plaza to SR 434	35	637	Signal	128	109.5	II	3.4	F	5.4	F
W Town Parkway WB	Laurel St. to SR 434	35	1391	Signal	95	66.8	II	10	F	13.8	D
W Town Parkway WB	Laurel St. to SR 434	35	1391	Signal	168.3	132	II	5.6	F	9.6	F
Eagle Circle SB	Lake Sterling Ct. to Red Bug Lake Rd.	30	739	Signal	127.2	61.8	II	4	F	4	F
Eagle Circle SB	Lake Sterling Ct. to Red Bug Lake Rd.	30	739	Signal	134.4	36	II	3.7	F	3.7	F