



# SECURING YOUR FUTURE



## *The Annual State of the County*

**Presented by Brenda Carey,  
Commission Chairman**



# Introducing Your County Commission



**District 1**

Bob Dallari



**District 2**

Michael McLean  
Vice Chairman



**District 3**

Dick Van Der Weide



**District 4**

Carlton Henley



**District 5**

Brenda Carey  
Chairman



*The State of the County – Securing Your Future*





# And the Constitutional Officers



*The State of the County – Securing Your Future*





# Introducing Our Partners



*The State of the County – Securing Your Future*







# Introducing Our Partners



*The State of the County – Securing Your Future*







# Introducing Our Partners



*The State of the County – Securing Your Future*





# Introducing Our Partners



*The State of the County – Securing Your Future*



# Introducing Our Partners



*The State of the County – Securing Your Future*







# Proud of Our Cities

Money Magazine's Best Places to Live:

- Lake Mary, #4
- Winter Springs, #31



*The State of the County – Securing Your Future*



# SECURING YOUR FUTURE

## ***BY HAVING . . .***

-  Good Infrastructure
-  A Safe Community
-  High-Paying Jobs
-  Excellent Schools
-  Natural Lands & Recreation
-  Conservation
-  Business-Friendly Government



*The State of the County – Securing Your Future*



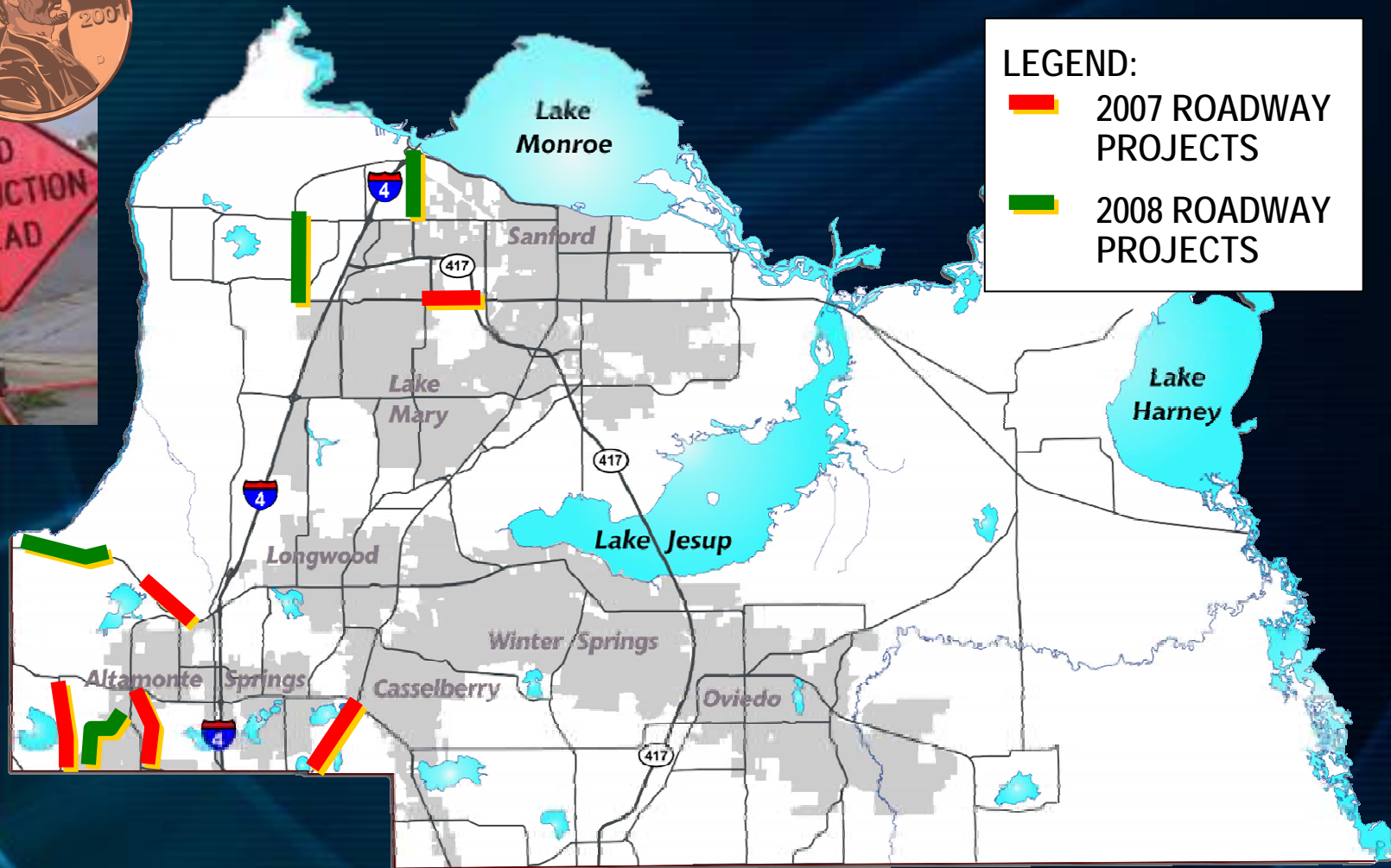
# SECURING YOUR FUTURE

## WITH ***GOOD INFRASTRUCTURE***



*The State of the County – Securing Your Future*

# Major Roadway Projects

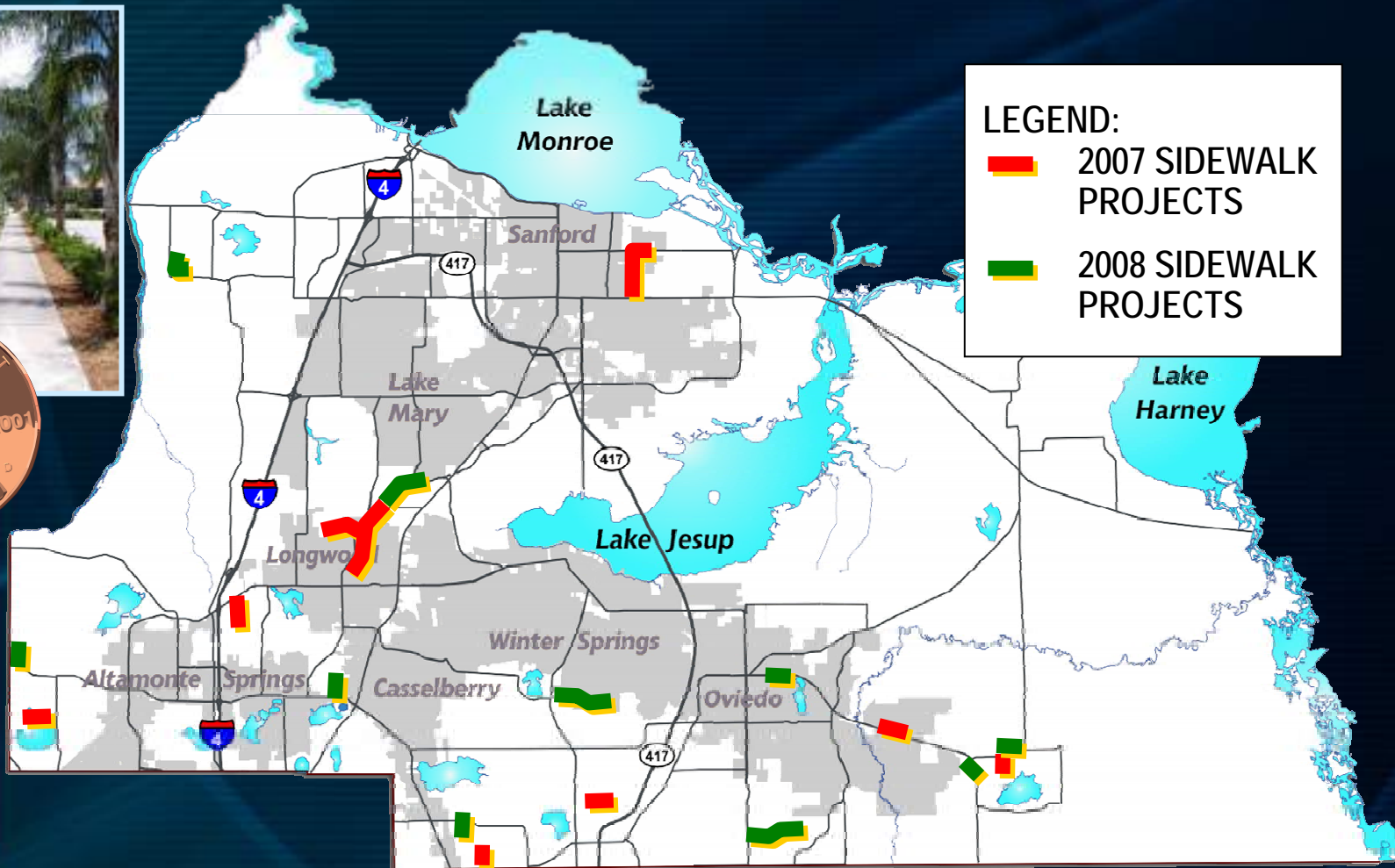


*The State of the County – Securing Your Future*





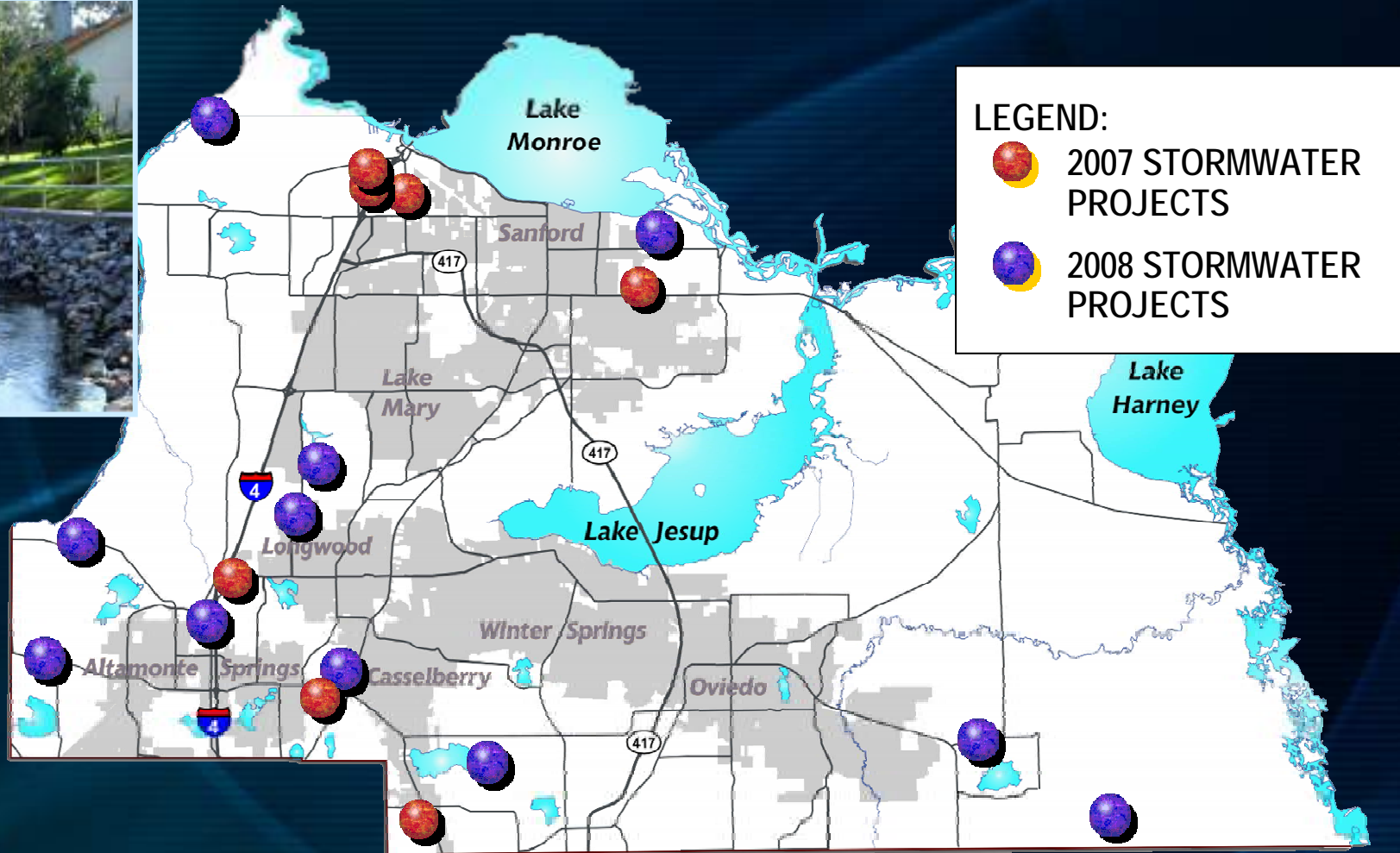
# Major Sidewalk Projects



*The State of the County – Securing Your Future*




# Major Stormwater Projects



*The State of the County – Securing Your Future*







# Subdivision Rehabilitation Program



- **Areas built prior to 1945 have limited public infrastructure**
- **Needs Assessment Study looked at 1,200 subdivisions**
- **Infrastructure exceeding designed life expectancy**
- **Program addresses deficiencies in subdivisions – 84 subdivisions were identified**





# Utility Bond Issue



- **Seminole County operates 16 water treatment plants that provided 6.8 billion gallons of water last year**



- **Seminole County operates 2 wastewater treatment facilities and transmitted 1.89 billion gallons to the Iron Bridge facility**





# SECURING YOUR FUTURE

WITH A  
***SAFE COMMUNITY***



*The State of the County – Securing Your Future*

# Mosquito Control Program

MOSQUITO



ALERT

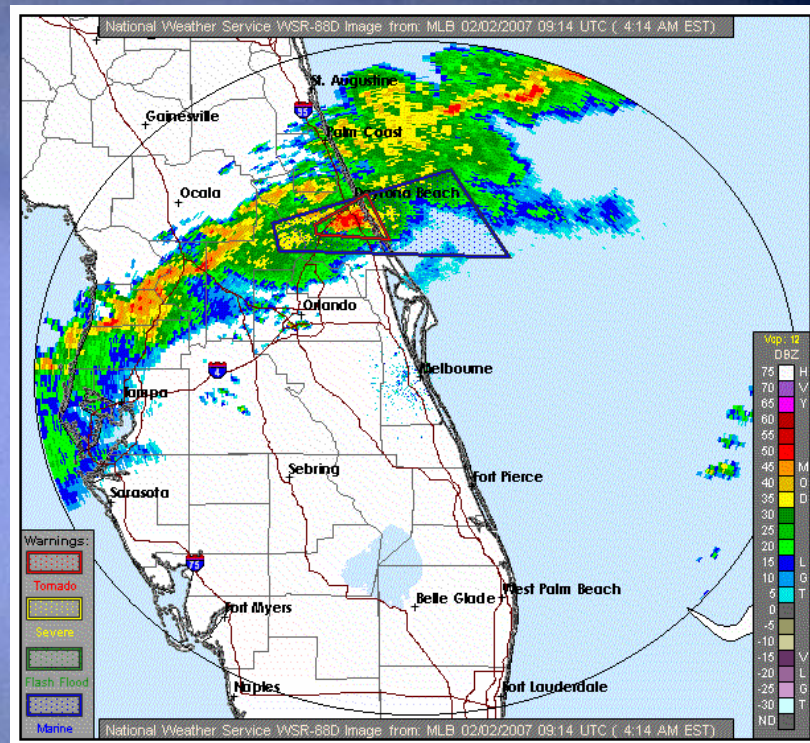


*The State of the County – Securing Your Future*





# Alert Seminole



[www.PrepareSeminole.org](http://www.PrepareSeminole.org)



The State of the County – Securing Your Future





# EMS/Fire/Rescue

- Fire-EMS Training Center
- Fire Fund Grant
- New Fire Station 13

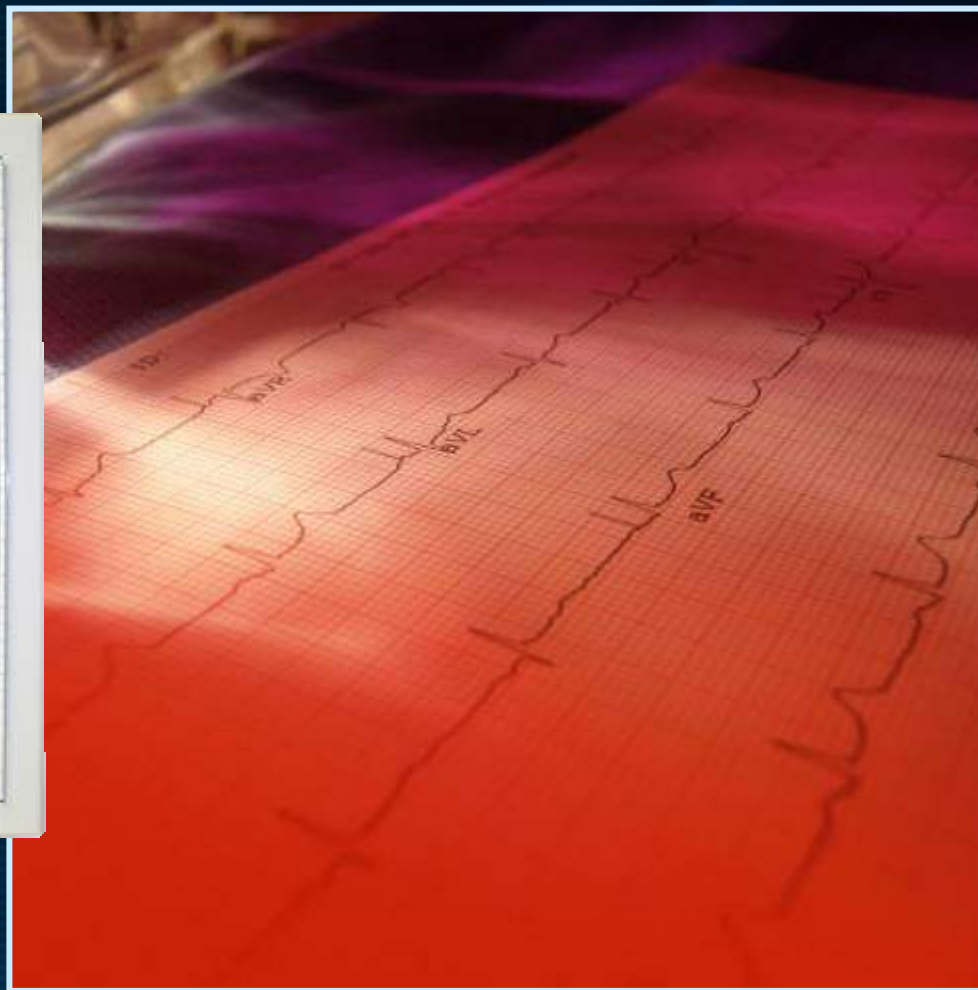


*The State of the County – Securing Your Future*





# AED - You've Got to Have Heart



*The State of the County – Securing Your Future*



# Safety with Pedestrian Overpasses



*The State of the County – Securing Your Future*





# Sheriff's Office



*The State of the County – Securing Your Future*





# SECURING YOUR FUTURE

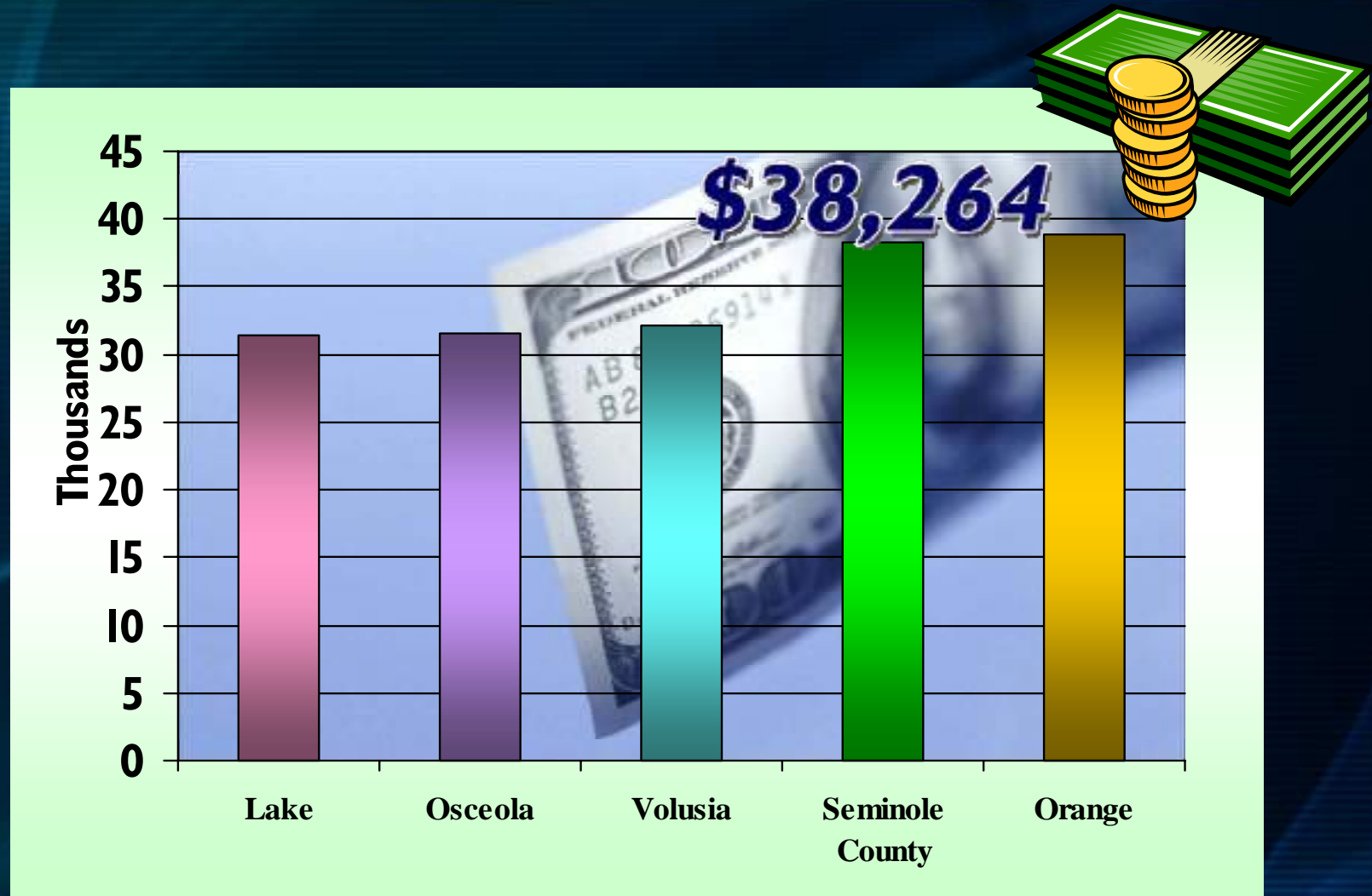
## WITH ***HIGH-PAYING JOBS***



The State of the County – Securing Your Future



# Average Wages in Central Florida



*The State of the County – Securing Your Future*





# North I-4/Lake Mary

## The Seminole Community College Center for Economic Development

**SCC Corporate College**

**Seminole Advisory Board  
Council**

**Seminole County Regional  
Chamber of Commerce**

**Seminole County  
Economic Development**

**Metro-Orlando EDC**

**Florida High-Technology  
Corridor Council**

**University of Central Florida**



*The State of the County – Securing Your Future*







# Economic Development

- In 2007, the County established 16 expansion or relocation projects resulting in:
  - 1,355 new jobs
  - More than \$55 million in capital investment
  - 596,000 square feet occupied





# Small Business Development

Seminole County partners to provide small business development.

**Seminole Technology Business Incubation Center (STBIC),** located in the I-4 corridor, is dedicated to growing technology based small businesses.



**In 2007 the Small Business Development Center (SBDC) serviced 354 clients and hosted 32 events, many in conjunction with our library system.**



*The State of the County – Securing Your Future*







# UCF Accelerator



- UCF Technology Incubator program in Winter Springs
- 10,000 square foot office center
- Has already admitted six clients
- Complements facilities located in the Central Florida Research Park and the UCF campus





# Regional Jobs



- Innovation Way
- The Burnham Institute of Medical Research
- UCF Medical School
- New VA Hospital
- SCC Medical/Nursing College







# SeminoleWAY

A Guide for Quality Economic Development

A high-value, high-wage corridor to be established along the SR 417 corridor.

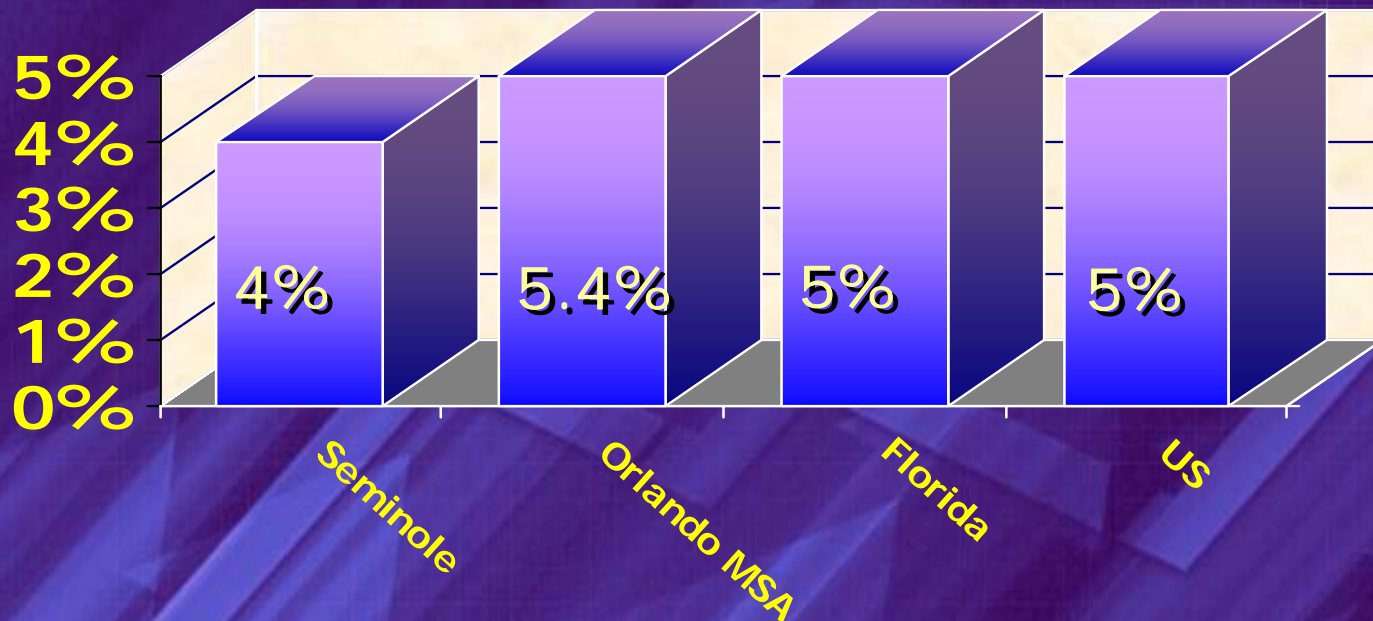


*The State of the County – Securing Your Future*





# Unemployment Rates




*The State of the County – Securing Your Future*







# Income in Seminole County



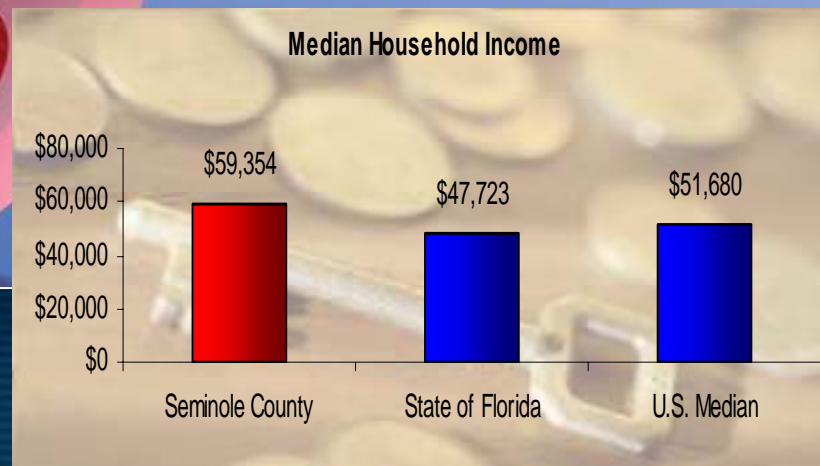
**AVERAGE HOUSEHOLD  
INCOME**  
**\$68,859**

**MEDIAN HOUSEHOLD  
INCOME**  
**\$59,354**

Source: DemographicsNow

★ Median Household  
Income

⇒ 3rd highest  
among Florida  
counties



*The State of the County – Securing Your Future*



# SECURING YOUR FUTURE

WITH AN  
***EXCELLENT SCHOOL SYSTEM***



The State of the County – Securing Your Future





# Seminole County Public Schools



- **NEWSWEEK Magazine** ranked all 8 Seminole County 4-year public high schools in the top 5% in the nation according to the Challenge Index
- **55 Seminole County Schools** were named “Five Star Schools” by the Florida Department of Education



*The State of the County – Securing Your Future*



# Partnering with the School System

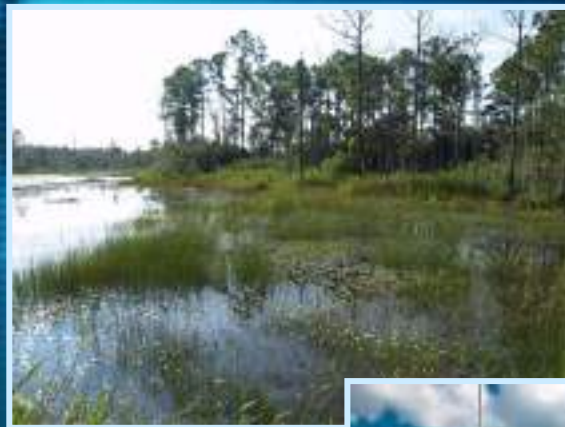
- Sharing of the 1-cent sales tax
- Driver Education Program funding
- County awarded Commissioner's Business Recognition Award from the Florida Association of Partners in Education





# SECURING YOUR FUTURE

## WITH **NATURAL LANDS & RECREATION**



*The State of the County – Securing Your Future*



# Planning Parks for the Future

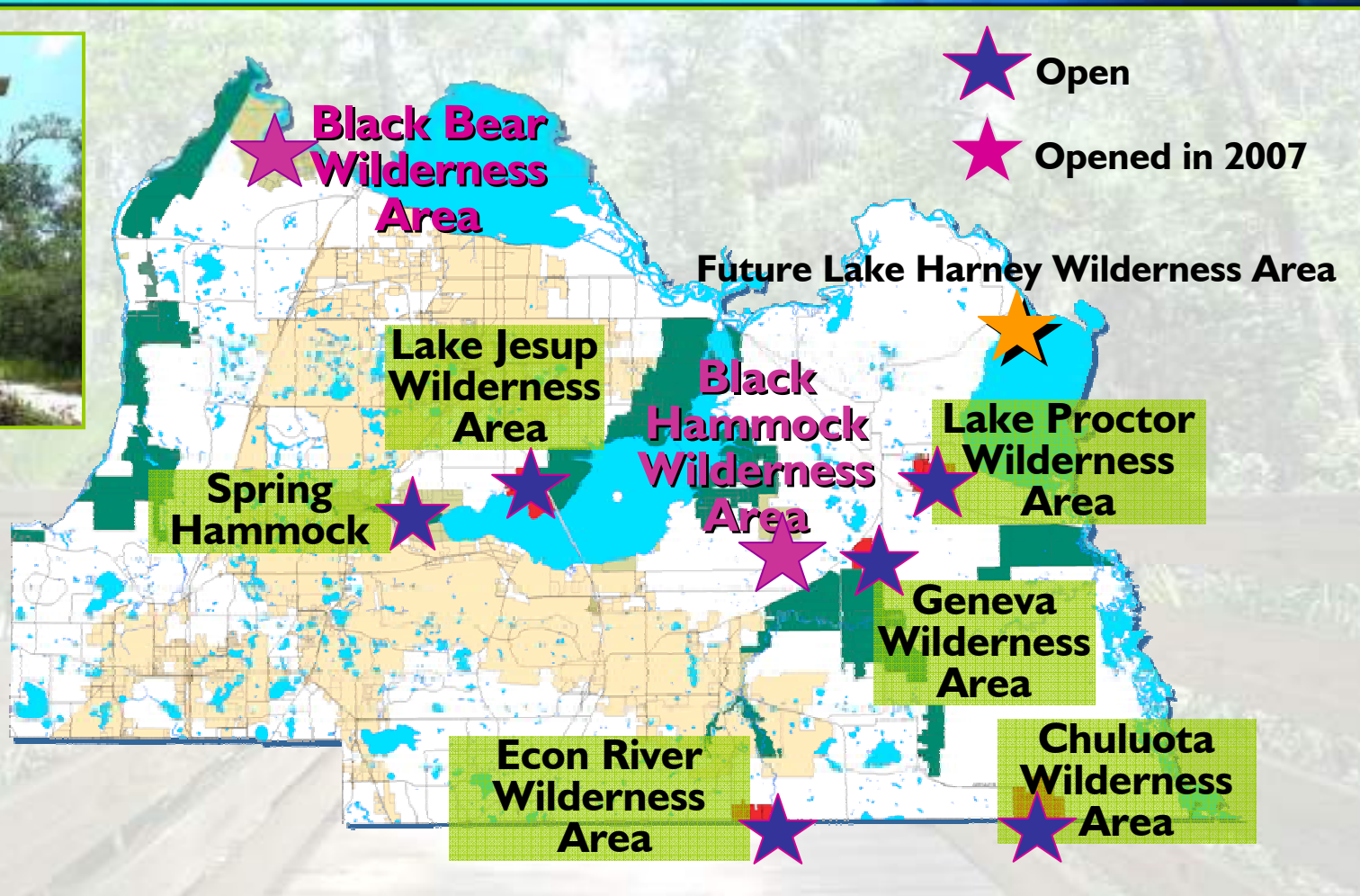


The State of the County – Securing Your Future





# The Natural Lands Program



*The State of the County – Securing Your Future*







# Trails Program

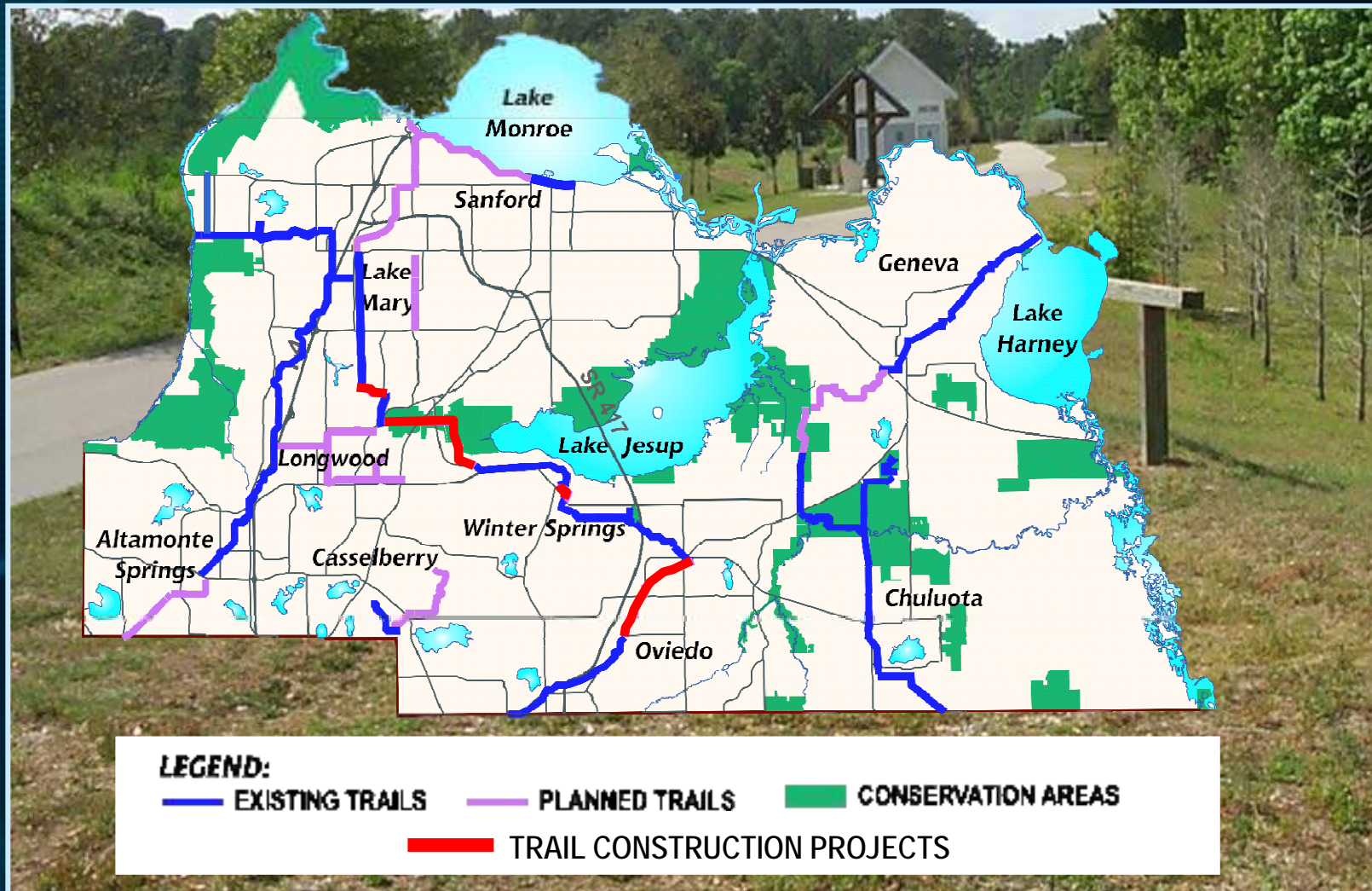


*The State of the County – Securing Your Future*





# Upcoming Trail Projects



*The State of the County – Securing Your Future*





# SECURING YOUR FUTURE

## WITH **CONSERVATION**



*The State of the County – Securing Your Future*





# Energy from Trash



- Seminole County's landfill will convert methane gas to energy
- The plant will produce enough electricity to power more than 3,500 homes



# County Energy Policies

- Seminole County energy conservation policy
  - Standardizing temperature settings
  - Installation of energy-efficient lighting.
- Our goal is to lower energy usage by 15 percent in the first year of the program's inception





# Reclaimed Water



*The State of the County – Securing Your Future*



# Green Buildings



*The State of the County – Securing Your Future*





# SECURING YOUR FUTURE

## WITH ***BUSINESS-FRIENDLY GOVERNMENT***



*The State of the County – Securing Your Future*



# Financial Overview



## Budget Highlights

- Countywide Tax Rate of 4.3578 mills
- Reduced from 4.9989 mills last year
- Tax Savings to the Community - \$20.6M

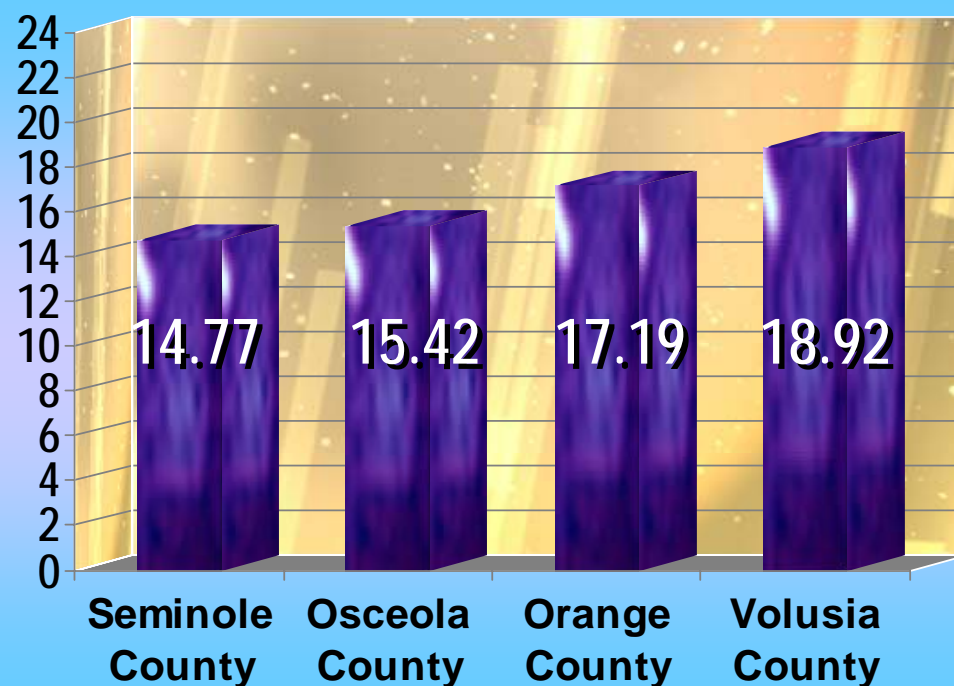






# Comparative Tax Rates

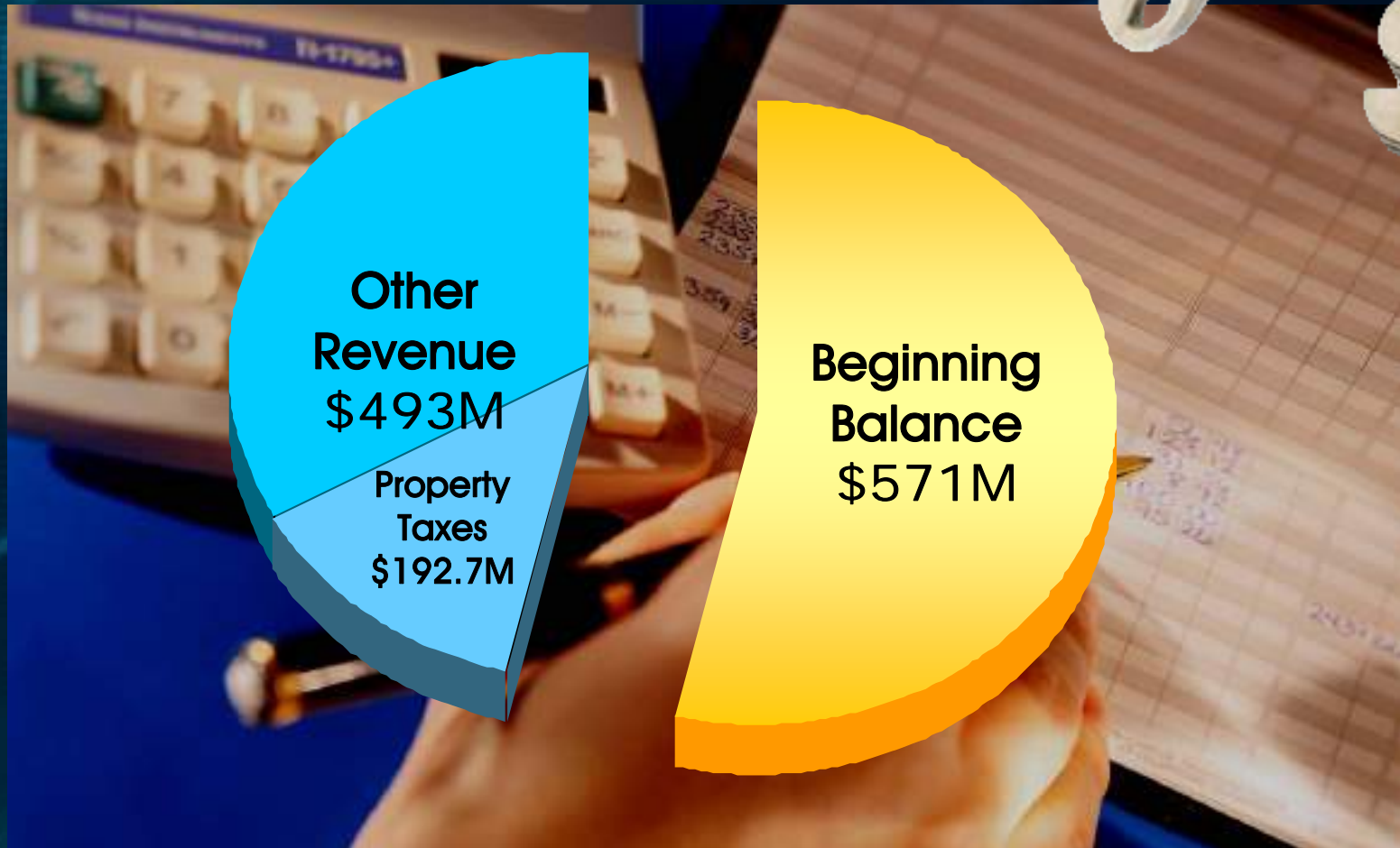
## Millage Rates in Unincorporated Areas



*The State of the County – Securing Your Future*



# 2007/2008 Budget



*The State of the County – Securing Your Future*





# 2007/2008 Budget

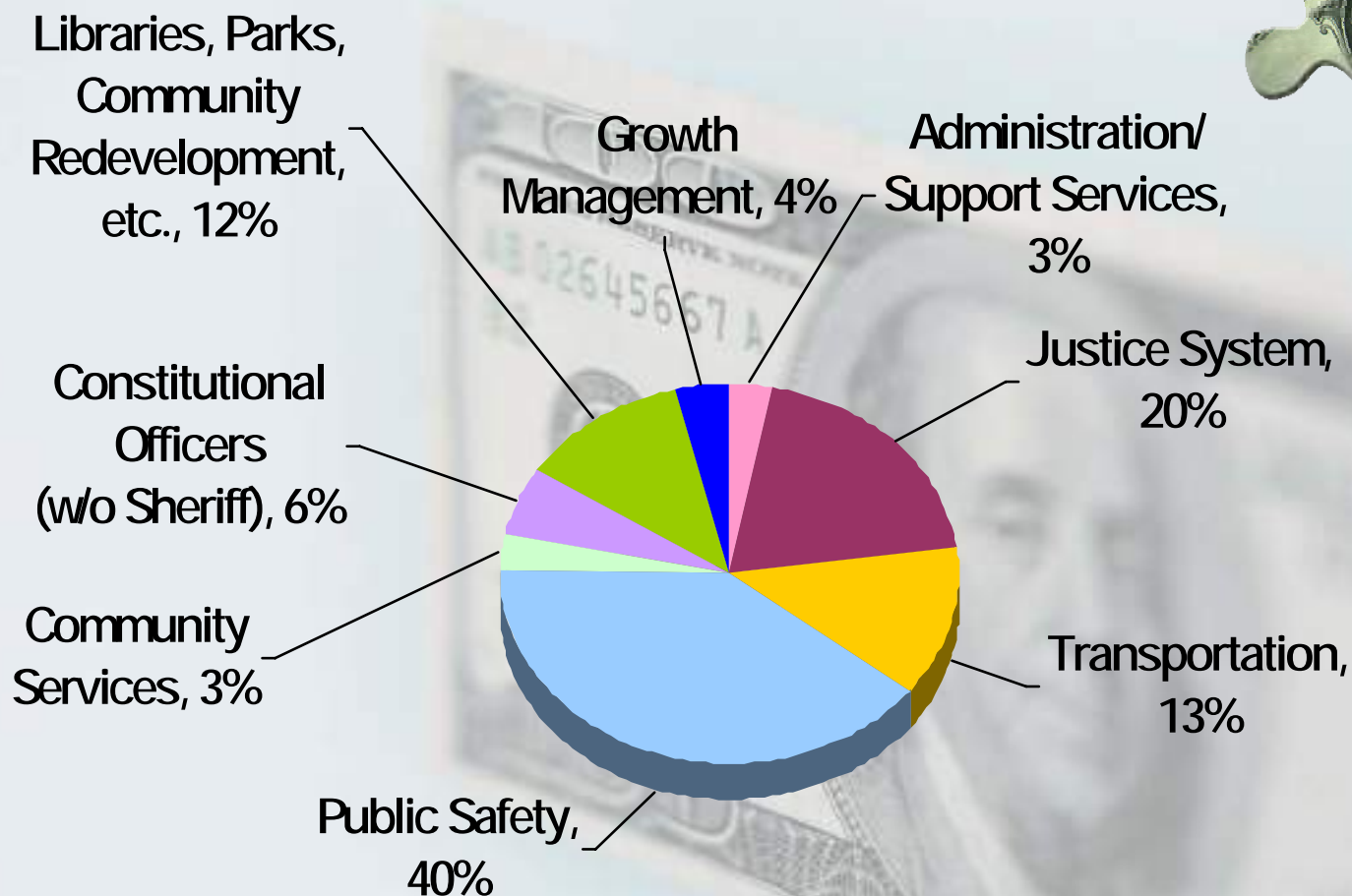
**\$1.064 BILLION**



*The State of the County – Securing Your Future*



# Where the Money Goes







# Financial Health



- **One of six highest credit rated counties in Florida**
- **Superior Bond Rating - “AA”**
- **Result is savings to the taxpayers in lower interest cost on financings.**





# A Strong Economic Profile



The **Standard & Poor's** report stated *"The County's strong economic profile - characterized by sound population growth, above-average wealth and income levels, low unemployment, and solid per capita retail sales"* add stability to the county's strong underlying economy.







# Favorable Credit Characteristics

**Moody's** most recent rating report stated *"the county's favorable credit characteristics that include a growing and diversifying economic base, well managed financial operations, and moderate debt position"* are reflective of the County's high rating.



# Prescription Drug Discount Program

- Offers an average savings of 20 percent off
- Cards are available to all County residents regardless of age, income, or existing health coverage
- Cards are available at senior centers, hospitals, pharmacies and most County offices
- Seminole County residents can call toll free 1-877-321-2652 or visit our Web site [www.seminolecountyfl.gov](http://www.seminolecountyfl.gov)



*The State of the County – Securing Your Future*





# SECURING YOUR FUTURE

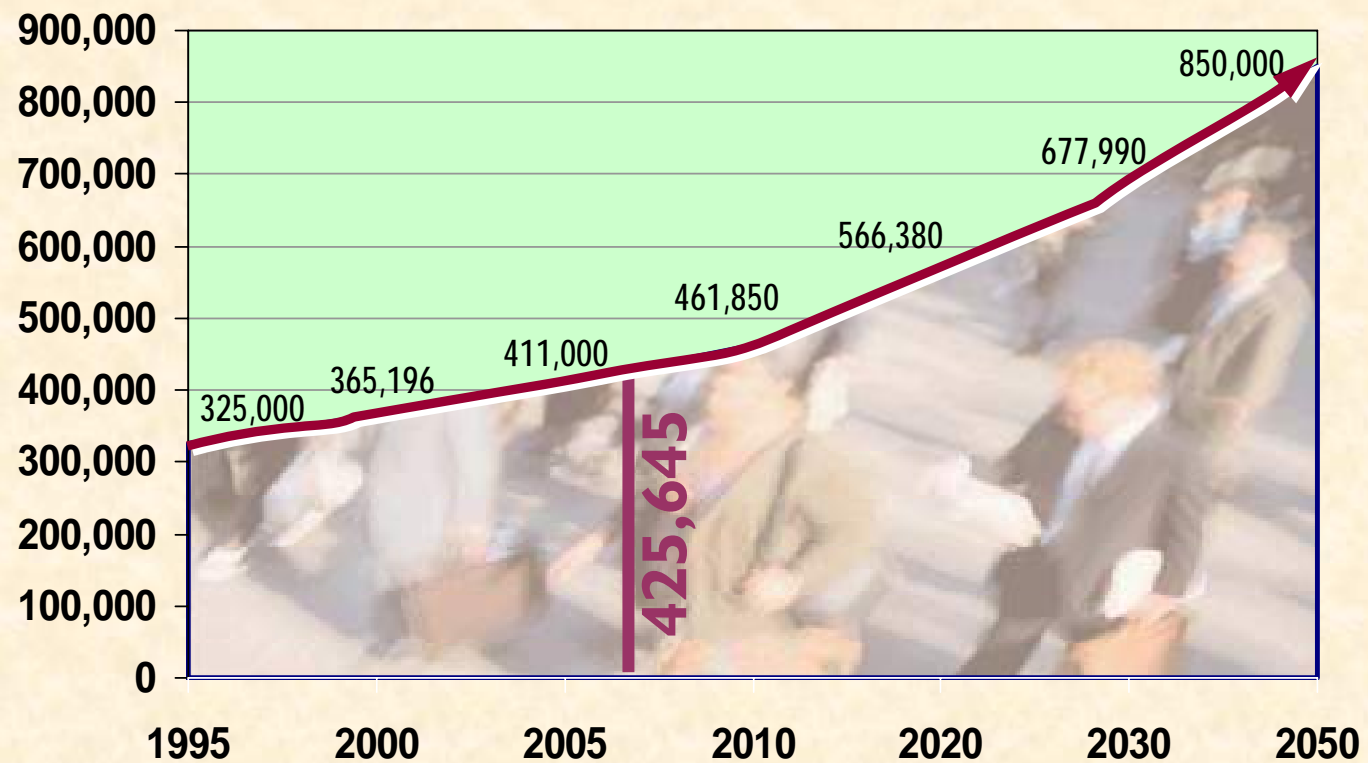
## ***BY ADDRESSING THE FOLLOWING ISSUES***



*The State of the County – Securing Your Future*

# The Issue - Booming Population

## Seminole County Population Growth Trends



*The State of the County – Securing Your Future*



# How Shall We Grow?



# How Shall We Grow - 2050



*The State of the County – Securing Your Future*

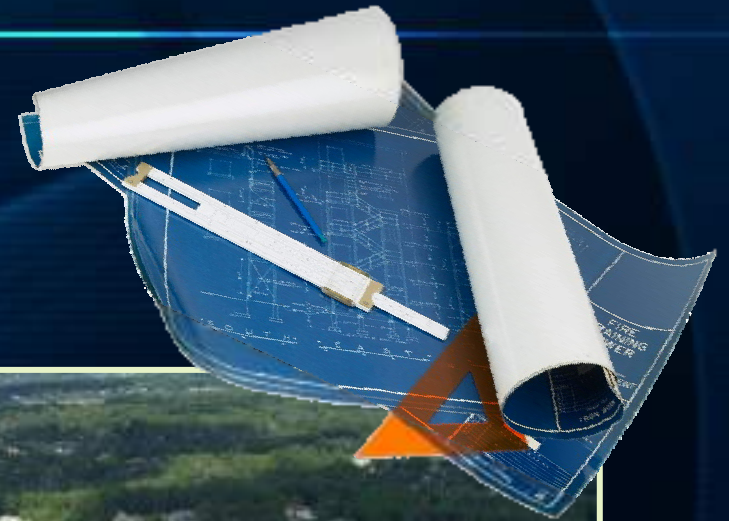






# The Comprehensive Plan

- Capital Improvement Program
- School Concurrency
- The Vision of “How Shall We Grow?”



# U.S. Highway 17-92 Corridor CRA



*The State of the County – Securing Your Future*







# Redevelopment Opportunities



*The State of the County – Securing Your Future*



# Central Florida Commuter Rail

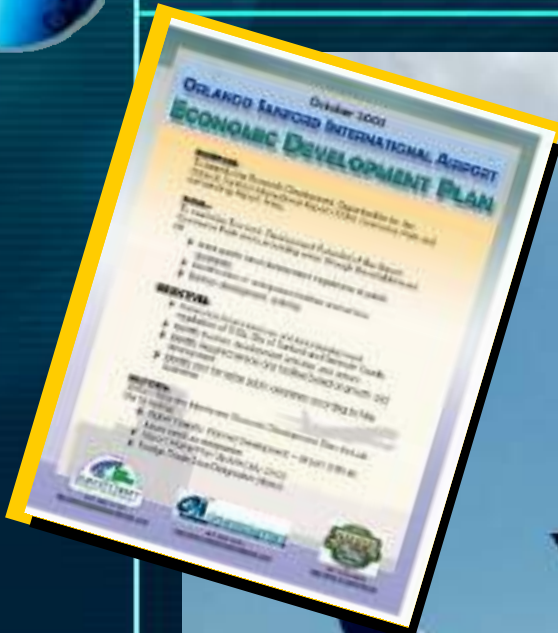


The State of the County – Securing Your Future





# Orlando Sanford International Airport



The State of the County – Securing Your Future



# Hotels in the Future



**Westin Hotel will be located at SR 46 and International Parkway with:**

- ★ 263 rooms and 13,000 sq feet of meeting space
- ★ Breaking ground this month

**Hyatt Place under construction**

- ★ 128-room \$16.5 million hotel
- ★ Located on Lake Mary Blvd at International Parkway
- ★ Open for business July 2008

**Altamonte Hilton under new ownership**

- ★ \$9 million renovation plans underway







# The Issue - Water Resources

- **SJRWMD will cap our Consumptive Use Permit in 2013**
- **Seminole County is looking for alternative water sources**
- **Seminole County has made a major investment in infrastructure to meet these needs**



# Regional Water - Yankee Lake



*The State of the County – Securing Your Future*





# Seminole County



*The State of the County – Securing Your Future*



# SECURING YOUR FUTURE



## ***The Annual State of the County***

**Presented by Brenda Carey,  
Commission Chairman**