

Legend

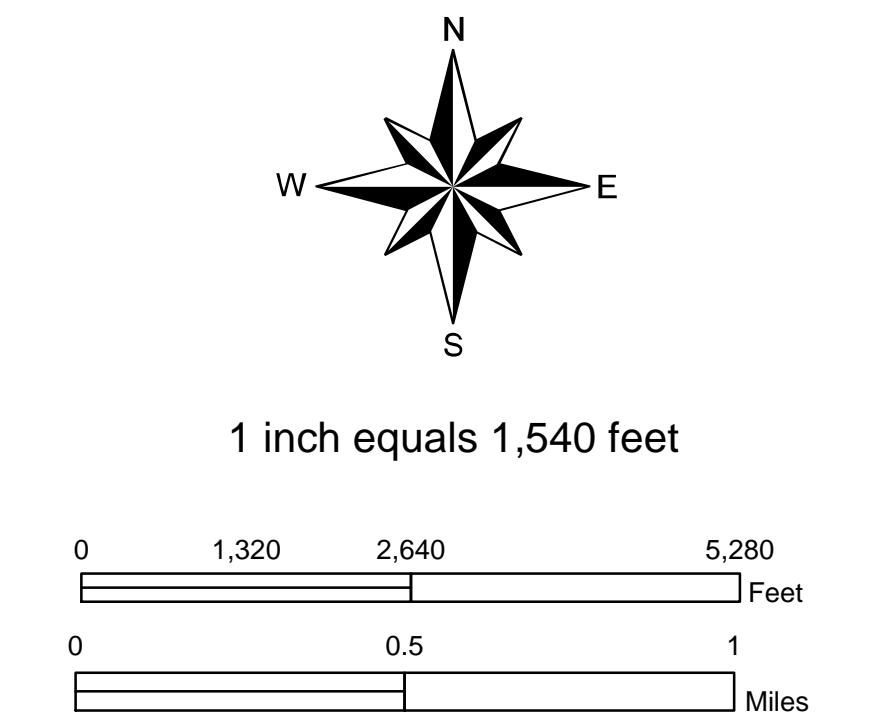
- Watershed Boundary
- Out of Study Area
- Preliminary 100-yr Floodplain
- FEMA FloodZones

Notes:

This information is being developed in accordance with standard engineering practice per the Lake Monroe Basin Study scope of services, and is provided for informational and review purposes. Floodplains shown are developed using a computer model that simulates projected surface water levels. The model includes watershed and rainfall event simulation parameters such as a design rainfall event and associated antecedent moisture conditions.

This information has not been finalized. Revisions may result in changes to the projected surface water levels and inundation areas. This information should be used as a reference only and not as the definitive source to determine flood elevations at the time. Neither Atkins nor Seminole County does not guarantee the completeness of this information and it is being provided as preliminary. Neither shall not be liable for any damages suffered as a result of using this information.

If you have questions or comments on the information and the methods used, please contact the Seminole County Public Works Engineering Division at 407-665-5572.

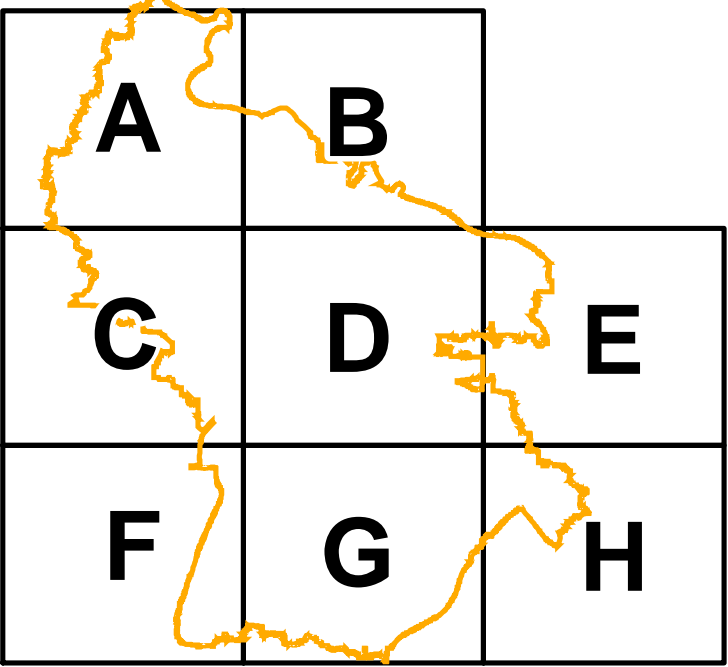
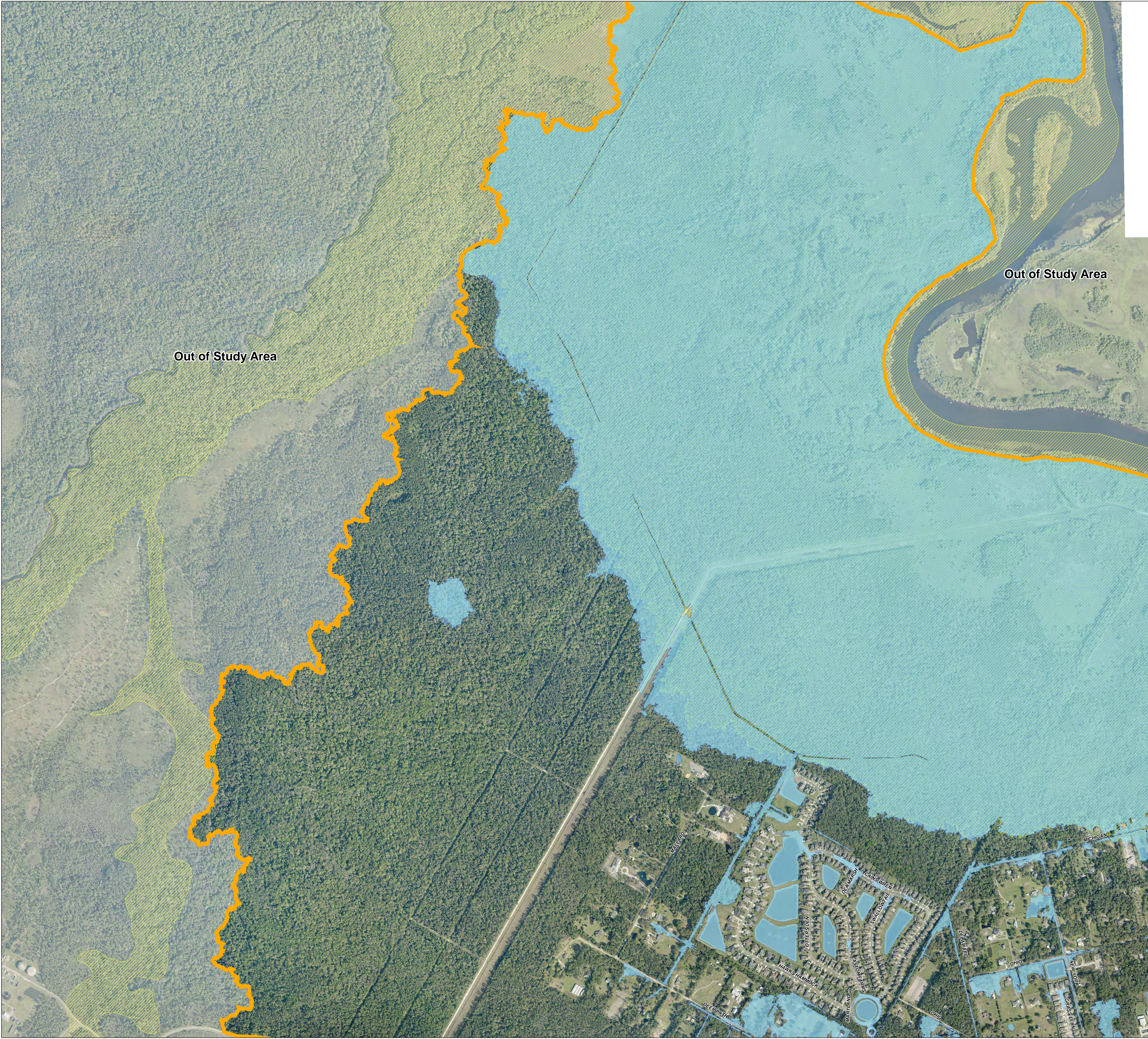


Produced By:
Atkins North America

Produced For:
Seminole County
Engineering Division

Lake Monroe Basin Study
Preliminary Floodplain Map

KEY MAP		
Filename: PublicMeetingMapTemplate.mxd	Map Date: August 2022	Map Prepared By: ATKINS
Date of Photography: 2019 Aerial Photography		



Legend

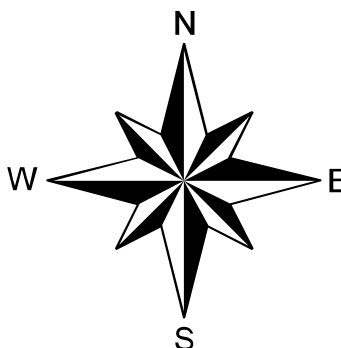
- Watershed Boundary
- Out of Study Area
- Preliminary 100-yr Floodplain
- FEMA Flood Zones

Notes:

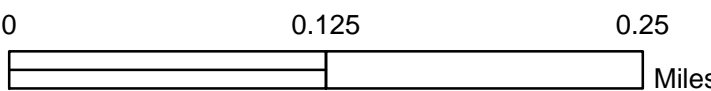
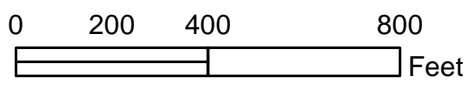
This information is being developed in accordance with standard engineering practice per the Lake Monroe Basin Study scope of services, and is provided for informational and review purposes. Floodplains shown are developed using a computer model that simulates projected surface water levels. The model includes watershed and rainfall event simulation parameters such as a design rainfall event and associated antecedent moisture conditions.

This information has not been finalized. Revisions may result in changes to the projected surface water levels and inundation areas. This information should be used as a reference only and not as the definitive source to determine flood elevations at this time. Neither Atkins nor Seminole County does not guarantee the completeness of this information and it is being provided as preliminary. Neither shall not be liable for any damages suffered as a result of using this information.

If you have questions or comments on the information and the methods used, please contact the Seminole County Public Works Engineering Division at 407-665-5572.



1 inch equals 400 feet



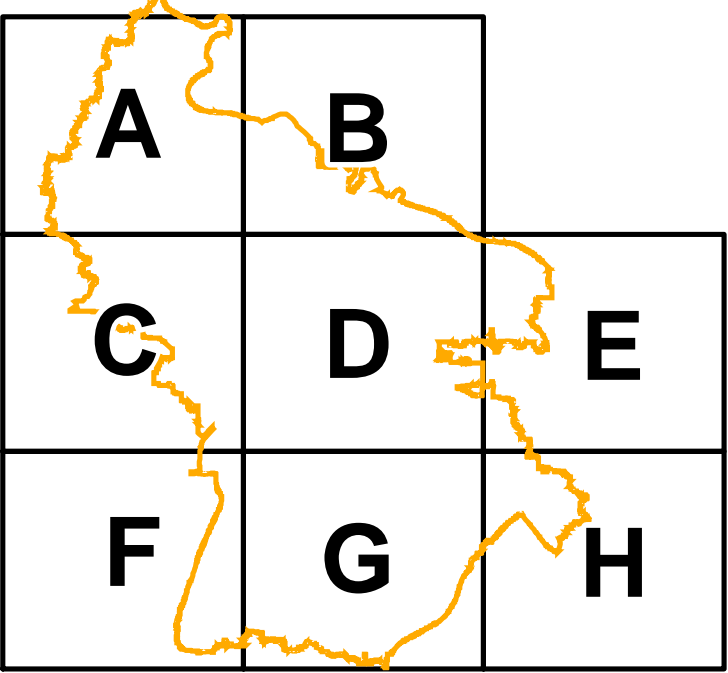
Produced By:
Atkins North America

Produced For:
Seminole County
Engineering Division

Lake Monroe Basin Study
Preliminary Floodplain Map

Map A

Filename: PublicMeetingMapTemplate.mxd	Map Date: August 2022	Map Prepared By: ATKINS
Date of Photography: 2019 Aerial Photography		



Legend

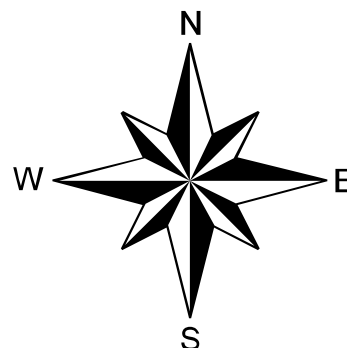
- Watershed Boundary
- Out of Study Area
- Preliminary 100-yr Floodplain
- FEMA Flood Zones

Notes:

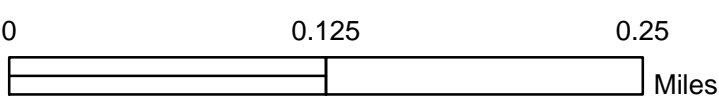
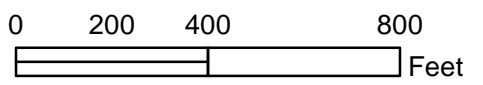
This information is being developed in accordance with standard engineering practice per the Lake Monroe Basin Study scope of services, and is provided for informational and review purposes. Floodplains shown are developed using a computer model that simulates projected surface water levels. The model includes watershed and rainfall event simulation parameters such as a design rainfall event and associated antecedent moisture conditions.

This information has not been finalized. Revisions may result in changes to the projected surface water levels and inundation areas. This information should be used as a reference only and not as the definitive source to determine flood elevations at this time. Neither Atkins nor Seminole County does not guarantee the completeness of this information and it is being provided as preliminary. Neither shall not be liable for any damages suffered as a result of using this information.

If you have questions or comments on the information and the methods used, please contact the Seminole County Public Works Engineering Division at 407-665-5572.



1 inch equals 400 feet



Produced By:
Atkins North America

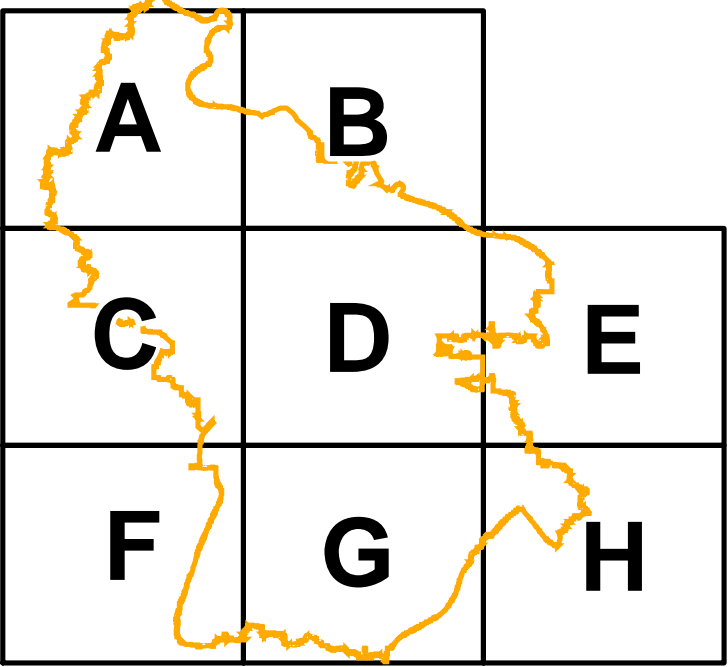
Produced For:
Seminole County
Engineering Division

Lake Monroe Basin Study
Preliminary Floodplain Map

Map B

Filename: PublicMeetingMapTemplate.mxd	Map Date: August 2022	Map Prepared By: ATKINS
---	--------------------------	----------------------------





Legend

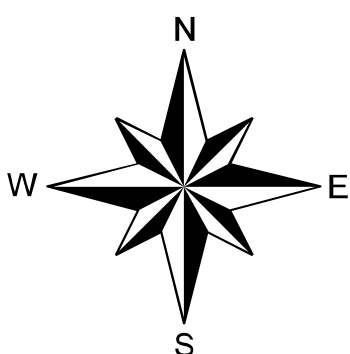
- Watershed Boundary
- Out of Study Area
- Preliminary 100-yr Floodplain
- FEMA Flood Zones

Notes:

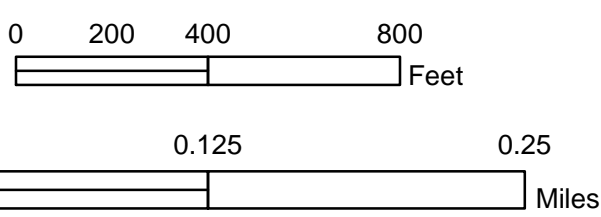
This information is being developed in accordance with standard engineering practice per the Lake Monroe Basin Study scope of services, and is provided for informational and review purposes. Floodplains shown are developed using a computer model that simulates projected surface water levels. The model includes watershed and rainfall event simulation parameters such as a design rainfall event and associated antecedent moisture conditions.

This information has not been finalized. Revisions may result in changes to the projected surface water levels and inundation areas. This information should be used as a reference only and not as the definitive source to determine flood elevations at the time. Neither Atkins nor Seminole County does not guarantee the completeness of this information and it is being provided as preliminary. Neither shall not be liable for any damages suffered as a result of using this information.

If you have questions or comments on the information and the methods used, please contact the Seminole County Public Works Engineering Division at 407-665-5572.



1 inch equals 400 feet



Produced By:
Atkins North America

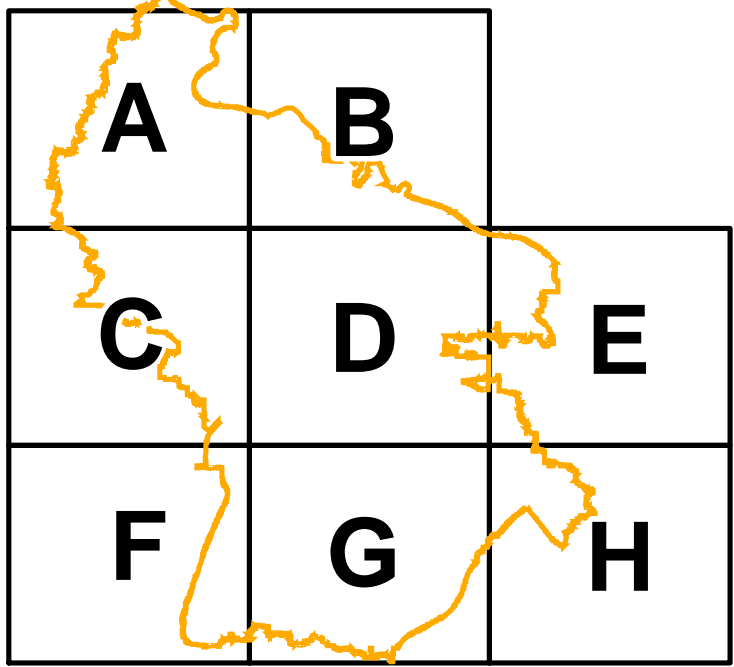
Produced For:
Seminole County
Engineering Division

Lake Monroe Basin Study
Preliminary Floodplain Map

Map C

Filename: PublicMeetingMapTemplate.mxd	Map Date: August 2022	Map Prepared By: ATKINS
Date of Photography: 2019 Aerial Photography		

Out of Study Area



Legend

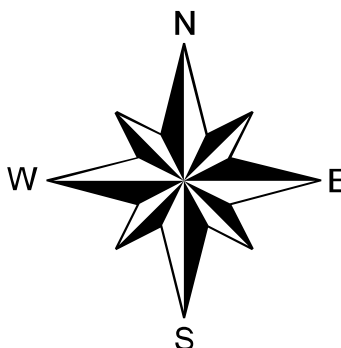
- Watershed Boundary
- Out of Study Area
- Preliminary 100-yr Floodplain
- FEMA Flood Zones

Notes:

This information is being developed in accordance with standard engineering practice per the Lake Monroe Basin Study scope of services, and is provided for informational and review purposes. Floodplains shown are developed using a computer model that simulates projected surface water levels. The model includes watershed and rainfall event simulation parameters such as a design rainfall event and associated antecedent moisture conditions.

This information has not been finalized. Revisions may result in changes to the projected surface water levels and inundation areas. This information should be used as a reference only and not as the definitive source to determine flood elevations at the time. Neither Atkins nor Seminole County does not guarantee the completeness of this information and it is being provided as preliminary. Neither shall not be liable for any damages suffered as a result of using this information.

If you have questions or comments on the information and the methods used, please contact the Seminole County Public Works Engineering Division at 407-665-5572.



1 inch equals 400 feet

0 200 400 800 Feet

0 0.125 0.25 Miles



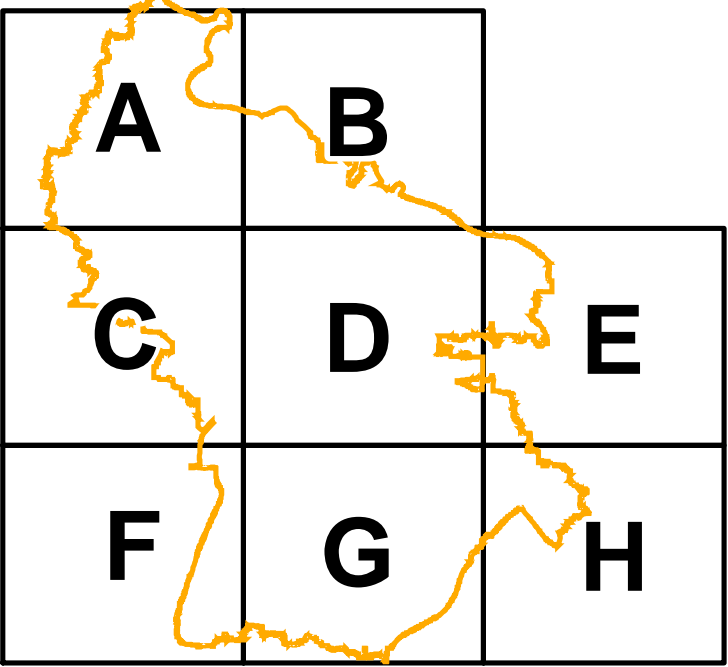
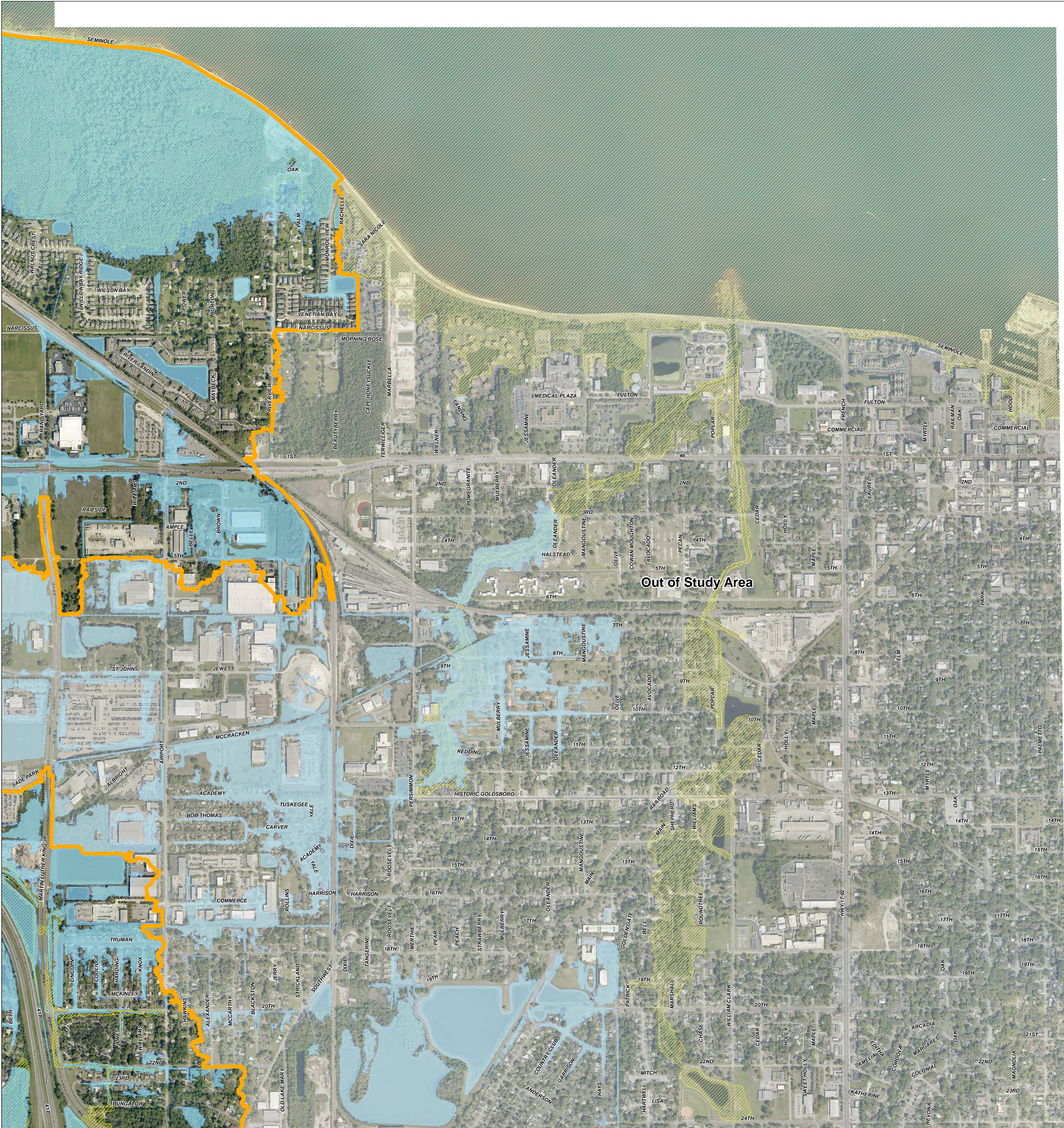
Produced By:
Atkins North America

Produced For:
Seminole County
Engineering Division

Lake Monroe Basin Study
Preliminary Floodplain Map

Map D

Filename: PublicMeetingMapTemplate.mxd	Map Date: August 2022	Map Prepared By: ATKINS
Date of Photography: 2019 Aerial Photography		



Legend

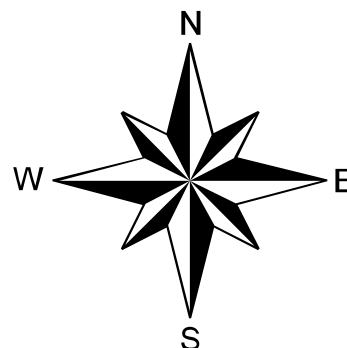
- Watershed Boundary
- Out of Study Area
- Preliminary 100-yr Floodplain
- FEMA Flood Zones

Notes:

This information is being developed in accordance with standard engineering practice per the Lake Monroe Basin Study scope of services, and is provided for informational and review purposes. Floodplains shown are developed using a computer model that simulates projected surface water levels. The model includes watershed and rainfall event simulation parameters such as a design rainfall event and associated antecedent moisture conditions.

This information has not been finalized. Revisions may result in changes to the projected surface water levels and inundation areas. This information should be used as a reference only and not as the definitive source to determine flood elevations at the time. Neither Atkins nor Seminole County does not guarantee the completeness of this information and it is being provided as preliminary. Neither shall not be liable for any damages suffered as a result of using this information.

If you have questions or comments on the information and the methods used, please contact the Seminole County Public Works Engineering Division at 407-665-5572.



1 inch equals 400 feet

0 200 400 800 Feet

0 0.125 0.25 Miles



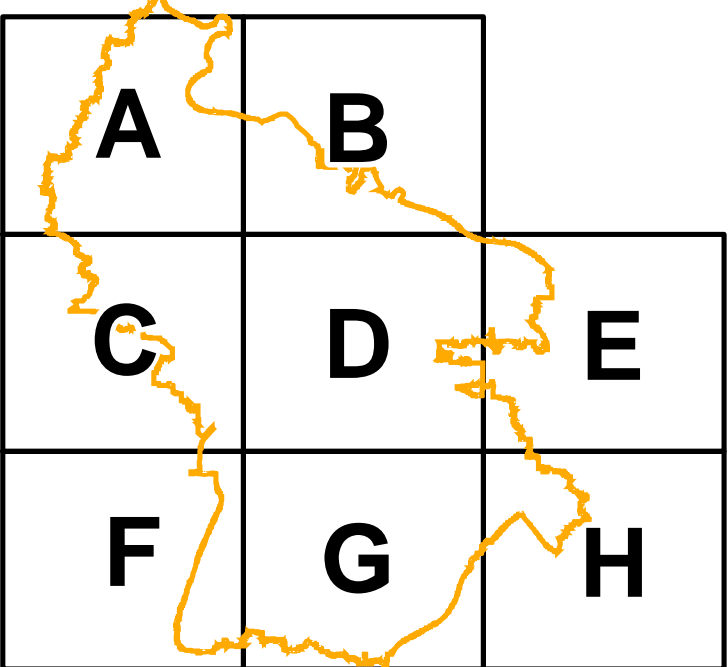
Produced By:
Atkins North America

Produced For:
Seminole County
Engineering Division

Lake Monroe Basin Study
Preliminary Floodplain Map

Map E

Filename: PublicMeetingMapTemplate.mxd	Map Date: August 2022	Map Prepared By: ATKINS
Date of Photography: 2019 Aerial Photography		



Legend

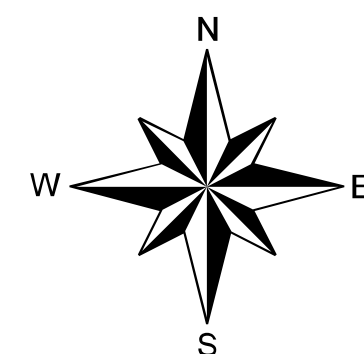
- Watershed Boundary
- Out of Study Area
- Preliminary 100-yr Floodplain
- FEMA Flood Zones

Notes:

This information is being developed in accordance with standard engineering practice per the Lake Monroe Basin Study scope of services, and is provided for informational and review purposes. Floodplains shown are developed using a computer model that simulates projected surface water levels. The model includes watershed and rainfall event simulation parameters such as a design rainfall event and associated antecedent moisture conditions.

This information has not been finalized. Revisions may result in changes to the projected surface water levels and inundation areas. This information should be used as a reference only and not as the definitive source to determine flood elevations at the time. Neither Atkins nor Seminole County does not guarantee the completeness of this information and it is being provided as preliminary. Neither shall not be liable for any damages suffered as a result of using this information.

If you have questions or comments on the information and the methods used, please contact the Seminole County Public Works Engineering Division at 407-665-5572.



1 inch equals 400 feet

0 200 400 800 Feet

0 0.125 0.25 Miles



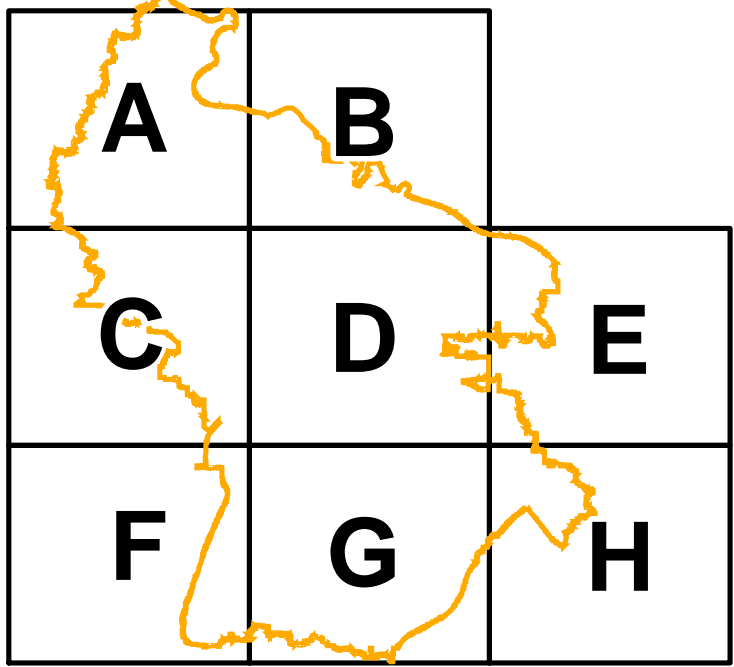
Produced By:
Atkins North America

Produced For:
Seminole County
Engineering Division

Lake Monroe Basin Study
Preliminary Floodplain Map

Map F

Filename: PublicMeetingMapTemplate.mxd	Map Date: August 2022	Map Prepared By: ATKINS
Date of Photography: 2019 Aerial Photography		



Legend

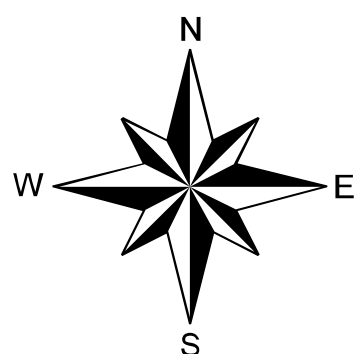
- Watershed Boundary
- Out of Study Area
- Preliminary 100-yr Floodplain
- FEMA Flood Zones

Notes:

This information is being developed in accordance with standard engineering practice per the Lake Monroe Basin Study scope of services, and is provided for informational and review purposes. Floodplains shown are developed using a computer model that simulates projected surface water levels. The model includes watershed and rainfall event simulation parameters such as a design rainfall event and associated antecedent moisture conditions.

This information has not been finalized. Revisions may result in changes to the projected surface water levels and inundation areas. This information should be used as a reference only and not as the definitive source to determine flood elevations at the time. Neither Atkins nor Seminole County does not guarantee the completeness of this information and it is being provided as preliminary. Neither shall not be liable for any damages suffered as a result of using this information.

If you have questions or comments on the information and the methods used, please contact the Seminole County Public Works Engineering Division at 407-665-5572.



1 inch equals 400 feet

0 200 400 800 Feet

0 0.125 0.25 Miles



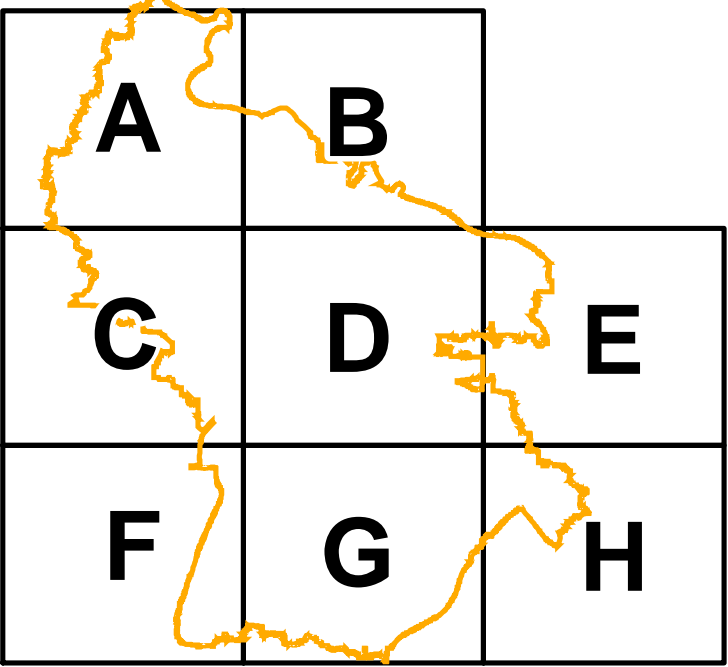
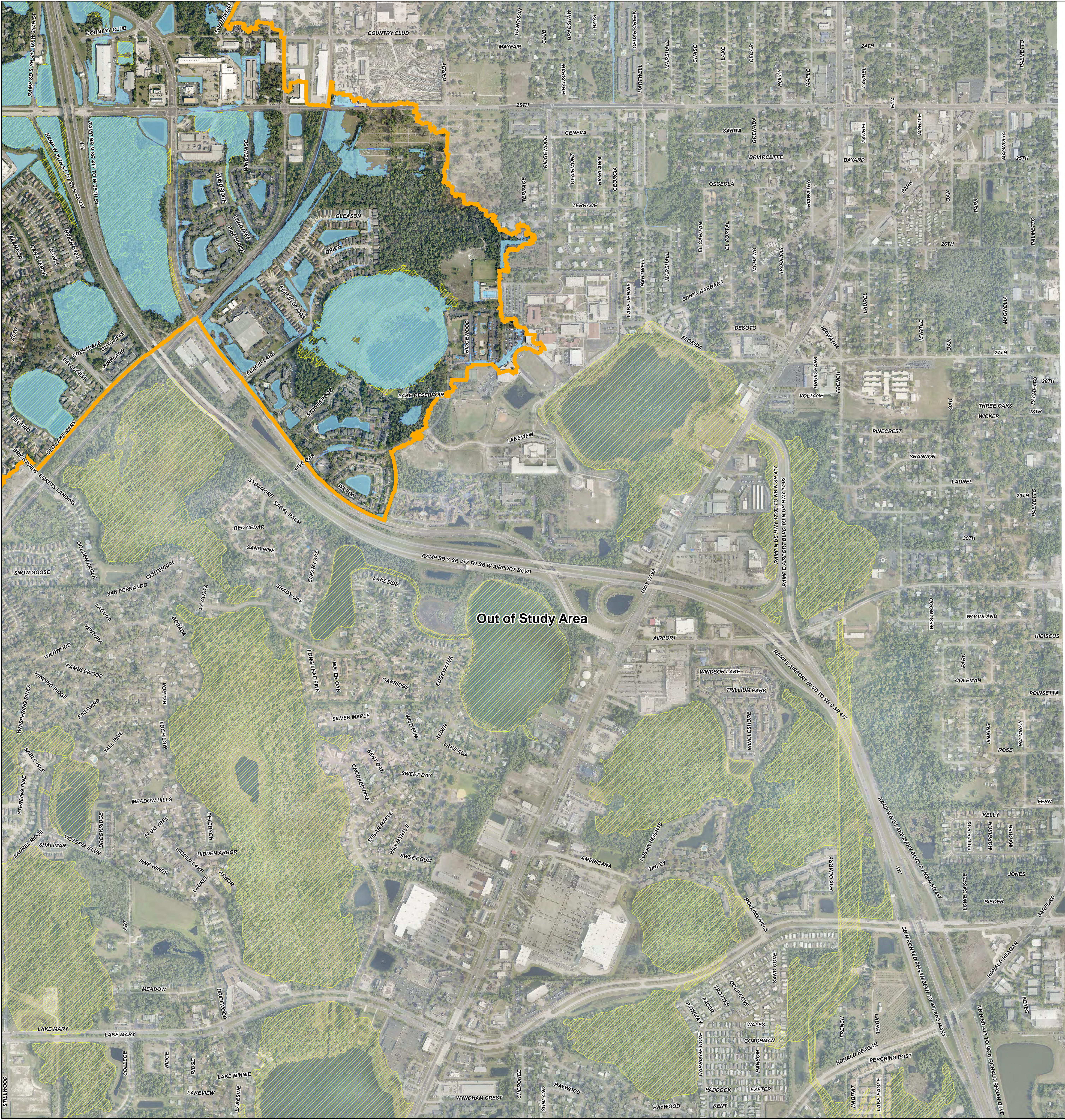
Produced By:
Atkins North America

Produced For:
Seminole County
Engineering Division

Lake Monroe Basin Study
Preliminary Floodplain Map

Map G

Filename: PublicMeetingMapTemplate.mxd	Map Date: August 2022	Map Prepared By: ATKINS
Date of Photography: 2019 Aerial Photography		



Legend

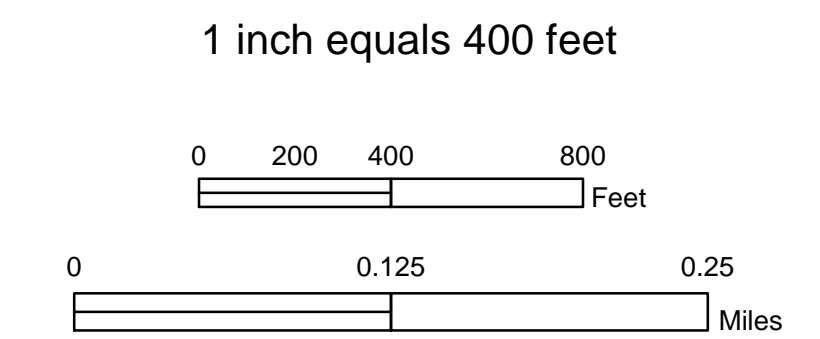
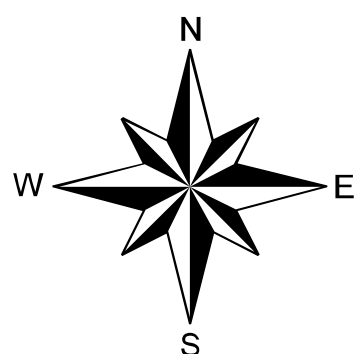
- Watershed Boundary
- Out of Study Area
- Preliminary 100-yr Floodplain
- FEMA Flood Zones

Notes:

This information is being developed in accordance with standard engineering practice per the Lake Monroe Basin Study scope of services, and is provided for informational and review purposes. Floodplains shown are developed using a computer model that simulates projected surface water levels. The model includes watershed and rainfall event simulation parameters such as a design rainfall event and associated antecedent moisture conditions.

This information has not been finalized. Revisions may result in changes to the projected surface water levels and inundation areas. This information should be used as a reference only and not as the definitive source to determine flood elevations at the time. Neither Atkins nor Seminole County does not guarantee the completeness of this information and it is being provided as preliminary. Neither shall not be liable for any damages suffered as a result of using this information.

If you have questions or comments on the information and the methods used, please contact the Seminole County Public Works Engineering Division at 407-665-5572.



Produced By:
Atkins North America

Produced For:
Seminole County
Engineering Division

Lake Monroe Basin Study
Preliminary Floodplain Map

Map H

Filename: PublicMeetingMapTemplate.mxd	Map Date: August 2022	Map Prepared By: ATKINS
Date of Photography: 2019 Aerial Photography		