

**Seminole County
Fire Department**

2024 ANNUAL REPORT

150 Eslinger Way, Sanford FL 32773

www.seminolecountyfl.gov/FireDepartment



BOARD
OF COUNTY
COMMISSIONERS



Jay Zembower
Chairman
District 2
Commissioner



Andria Herr
Vice Chair
District 5
Commissioner



Bob Dallari
District 1
Commissioner



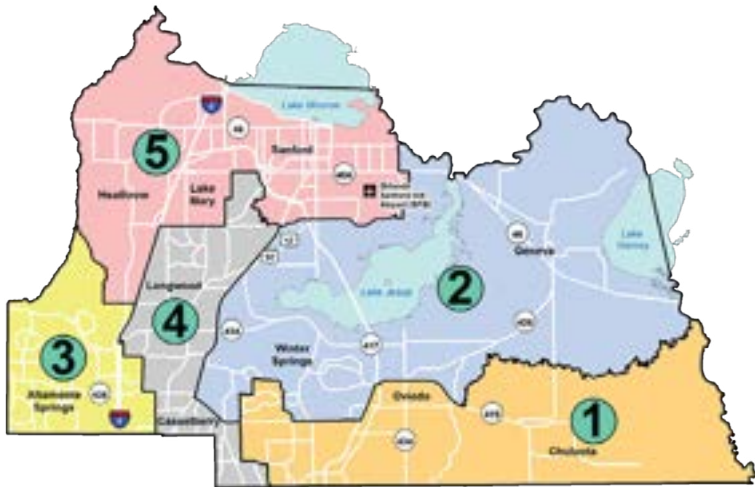
Amy Lockhart
District 4
Commissioner



Lee Constantine
District 3
Commissioner

TABLE OF CONTENTS

1	Fire Chief's Message	14	Fire Prevention
2	About Us	16	Professional Standards and Training
3	Our Timeline	18	Fiscal
4	50th Celebration	19	Emergency Communications
6	Operations	20	Public Information and Community Outreach
8	Medical Director	22	Drowning Prevention
9	EMS Operations	24	Fleet
10	Community Paramedicine	25	Fire Stations
12	Special Operations		



FIRE CHIEF'S MESSAGE:
50 YEARS OF EXCELLENCE

This year, we celebrated the Seminole County Fire Department's (SCFD) 50th anniversary, marking five decades of dedicated service.

Established at midnight on October 1, 1974, the Department had a mere 20 days to launch after the Seminole County Board of County Commissioners created an ordinance to do so on September 10, 1974. Although there was much prep work prior to the ordinance, it was still an incredible feat that involved hiring 57 personnel, consolidating volunteer fire departments, negotiating contracts, obtaining a fleet and securing nine stations, some housed in motel rooms.

In the five decades since, SCFD has grown exponentially. Today, we are a nationally accredited, all-hazards metropolitan fire department with 576 personnel, serving nearly half a million residents from 20 stations—with a 21st station on the way.

From our Fire Family to yours, thank you for your support for the past 50 years. On behalf of the brave men and women at SCFD, we look forward to continuing to serve the citizens of Seminole County for the next 50 years.



Matt Kinley

Fire Chief Matt Kinley
Seminole County Fire Department

Training - 2001

Present Day

First Crew: Station 34, C Shift

Fire Chief Kinley has spent his entire fire career at SCFD, joining the Department in 2001.



ABOUT US

PURPOSE

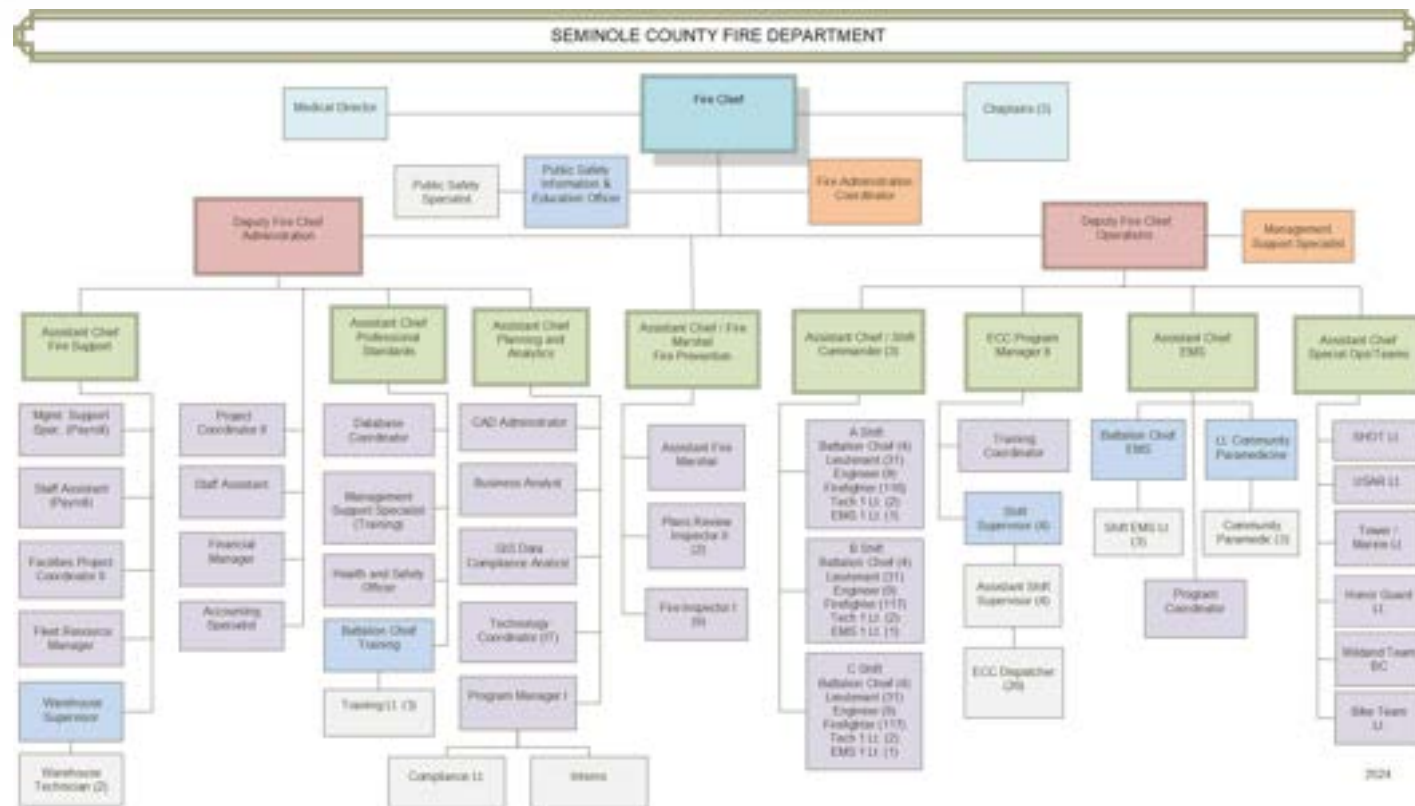
Ready to respond. Trained to make a difference.

MISSION

The mission of the Seminole County Fire Department is the **preservation of life and property** through the rapid response of highly trained personnel with appropriate resources and continuous prevention, so everyone goes home safe.

ORGANIZATIONAL VALUES

Selflessness through Duty
Consistency of Service
Fairness and Equity
Dedication to Community



OUR TIMELINE

Additions to First Response Agreement

- 1976** Altamonte Springs Fire Department
- 1978** Longwood Fire Department
- 1985** Casselberry Fire Department
- 1988** Winter Springs Fire Department
- 1989** Sanford Fire Department
- 1993** Lake Mary Fire Department
- 2002** Oviedo Fire Department
- 2003** Sanford Airport Authority

Consolidations with SCFD

- 2002** Altamonte Springs Fire Department
- 2008** Winter Springs Fire Department
- 2015** Casselberry Fire Department

Major Milestones

- 1980** Hazardous Materials Team created
- 1994** Special Hazards & Operations Team (SHOT) created
- 1999** First aviation asset acquired (Air Rescue 3)
- 2003** Florida Urban Search and Rescue Task Force 4 formed
- 2005** Training Center constructed and opened in 2007



From left to right: Fire Chief Gary Kaiser: 1974 – 1993; Fire Chief Terry L. Schenk: 1993 – 2005; Fire Chief Leeanna Mims: 2005 – 2015; Fire Chief Mark Oakes: 2017 – 2020; Fire Chief Otto Drozd III: 2020 – 2021; Fire Chief Matt Kinley 2022 – present



50 AND FIRED UP!

The Seminole County Fire Department (SCFD) celebrated its 50th anniversary, marking a half-century of service since its founding in 1974. SCFD has evolved from volunteer consolidation to a top-tier department, achieving ISO Class 1 rating, Commission on Accreditation of Ambulance Services (CAAS) and the Commission on Fire Accreditation International (CFAI) accreditation.

At a commemorative event held at the Fire Training Center, current and retired firefighters swapped stories and talked about SCFD's evolution since 1974. From 9 stations to a network of 20, the Department's history is a testament to Seminole County's unwavering dedication to public safety.



NATURAL HISTORY

October 1, 2024, marked 50 years since the Seminole County Fire Department was formed. Starting with just 56 personnel, the Department faced a surge of calls in its first year alone.

Take a look back at the Department's origins:



OPERATIONS

SCFD operates three shifts (A, B & C) led by an Assistant Chief who serves as the Shift Commander. They supervise four Battalions, each with a Battalion Chief charged with the oversight of the stations and personnel within its area. Each shift has 153 personnel.

See page 25 for Battalion listings and Station information.



BEN DECUIR
Deputy Chief of Operations



MATTHEW HETTLER
Deputy Chief of Administration



JOLENE JOYCE
Assistant Chief A Shift



JOEL HERRERA
Assistant Chief B Shift

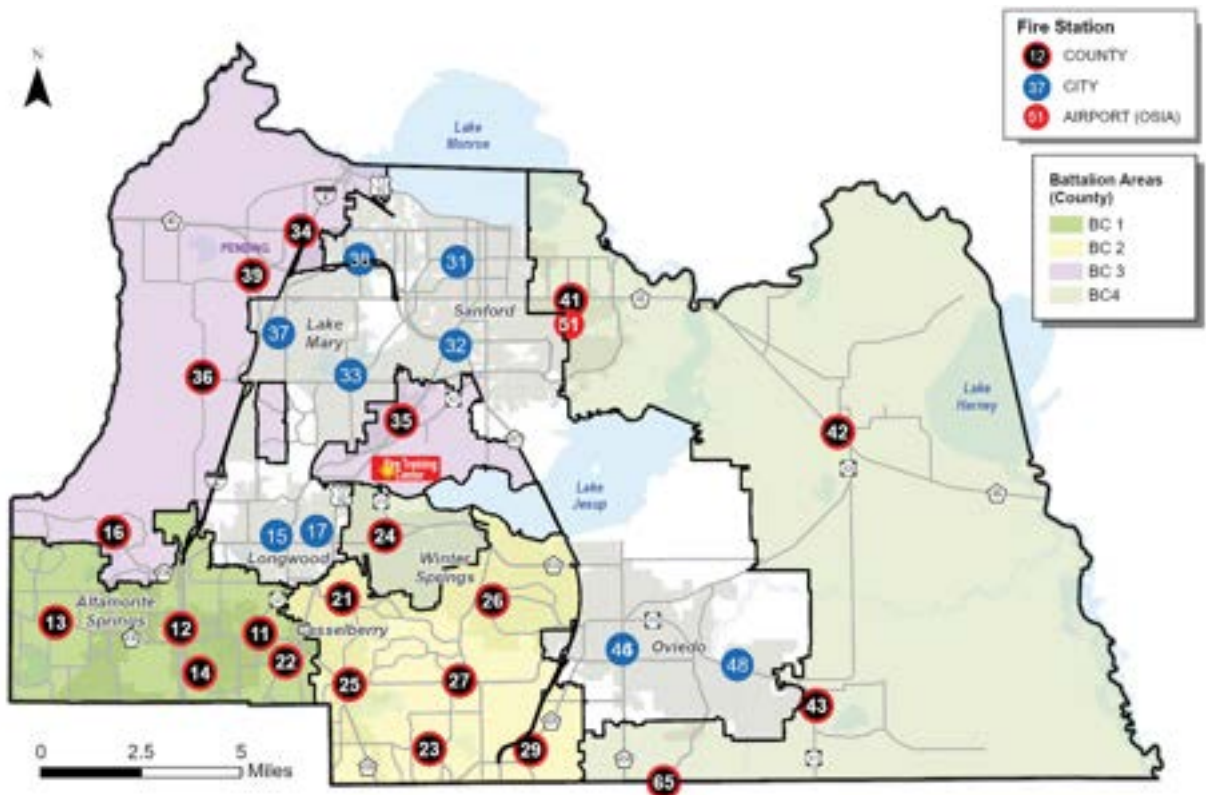


JASON PRATHER
Assistant Chief C Shift

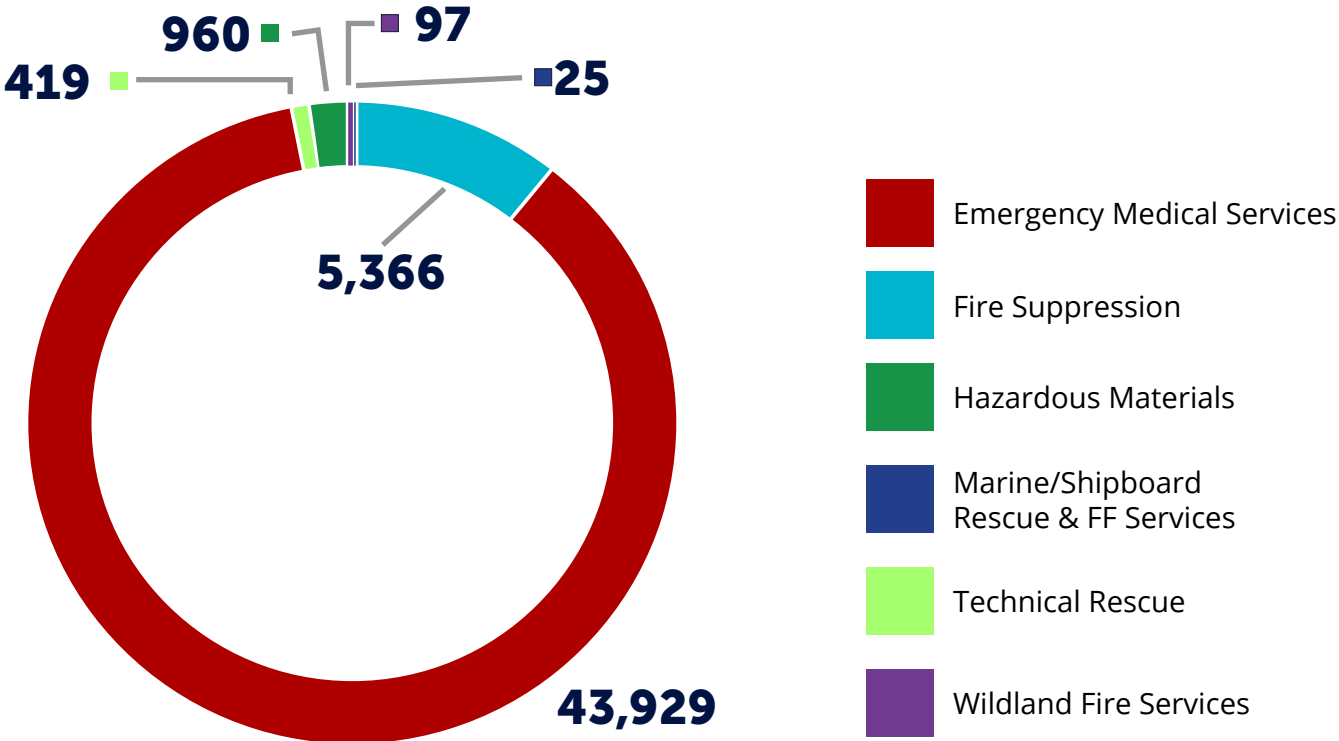
Value Saved

PRE-INCIDENT VALUE	LOSSES	VALUE SAVED
\$133,259,233	\$9,934,824	\$123,324,409

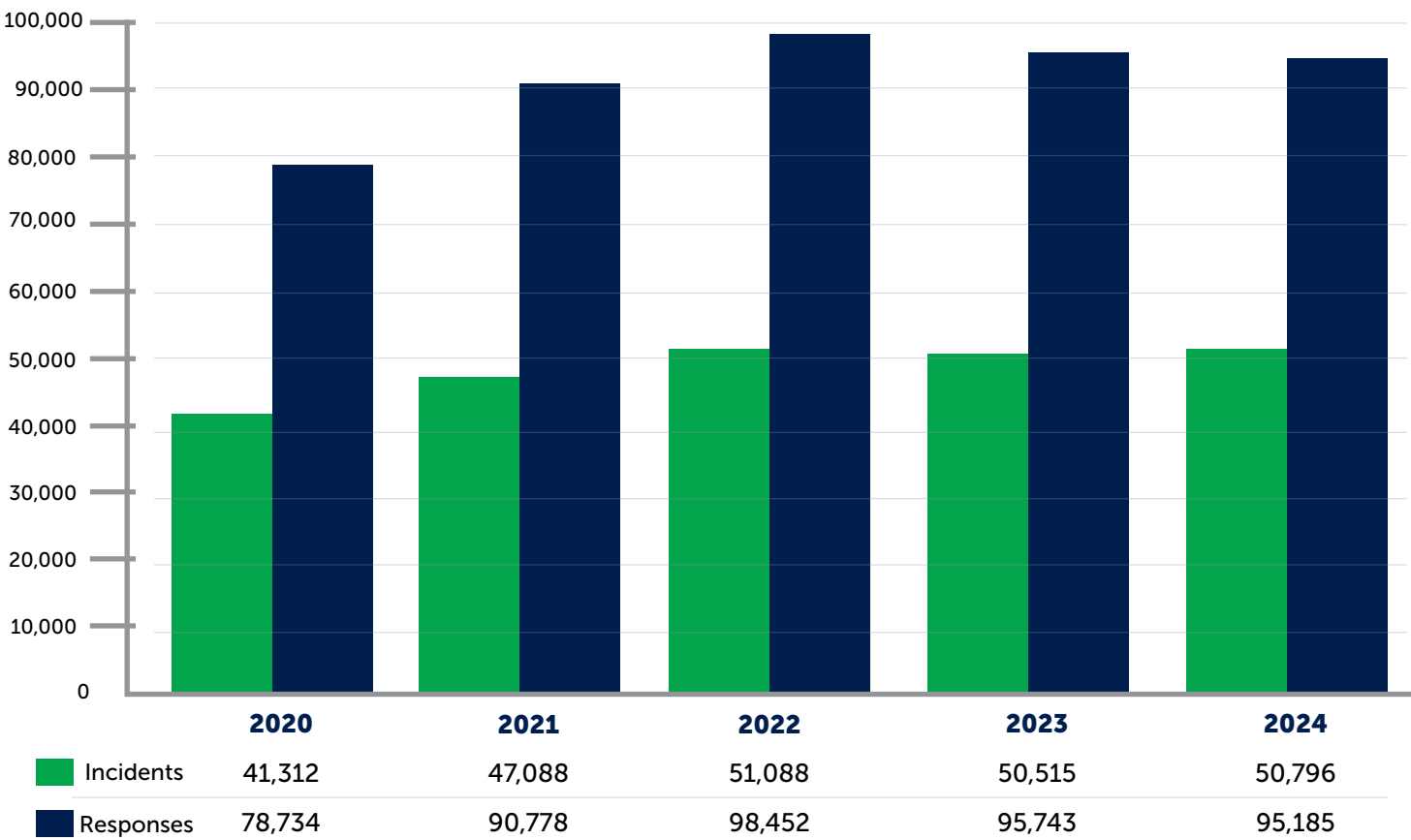
97%
PROPERTIES
SAVED FROM FIRES



INCIDENTS BY RESPONSE PROGRAM CLASSIFICATION



TOTAL SCFD INCIDENTS & RESPONSES BY CALENDAR YEAR



*Incidents – A call for service prompting a unit response.

**Responses – When a unit and/or units respond to an incident. The call type dictates the number of units that respond.

MEDICAL DIRECTOR

Protocols | Paramedic and EMT Licensing | Paramedic and EMT Compliance & Continuing Education

The Medical Director's Office establishes the emergency medical protocols that Paramedics and EMTs can practice under the Medical Director's license. It also oversees compliance and continuing education training.

Medical Director Dr. Todd Husty conducts multiple SCFD personnel meetings per month to discuss recent EMS calls and help with quality assurance, dialogue, and training.



"The Seminole County Fire Department is recognized statewide as having some of the most advanced protocols that provide an exceptionally high level of care before our patients reach the hospital."

- Dr. Todd Husty, Seminole County's Medical Director
Board certified in emergency medicine for more than 30 years



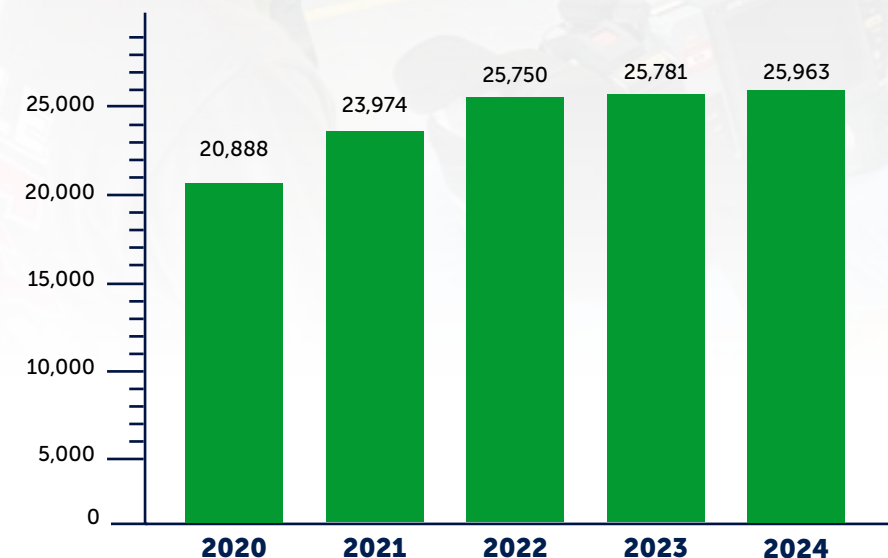
LIFE SAVING RECOGNITIONS

There are numerous occasions throughout the year where crews and dispatchers are recognized for their life saving efforts during a call. Reunification ceremonies allow crews to reunite with the patient they saved.

This year:

- 5 Life Saving Awards were presented to 24 personnel
- 6 Unit Citations were presented to 64 personnel

EMS OPERATIONS



TRAUMA ALERTS: 202

STROKE ALERTS: 517

CARDIAC ALERTS: 557

STEMI ALERTS: 679

SEPSIS ALERTS: 108



MOBILE SIM LAB

This year, SCFD launched the Mobile Simulation Lab to provide department crews with enhanced in-depth EMS training and re-certification opportunities right at their fire stations. The Lab, converted from a retired rescue chassis, leverages simulation and monitoring technology to provide firefighters with hands-on training opportunities beyond what they might receive in a traditional classroom setting.

PulsePoint

PulsePoint is a 911-connected mobile app that alerts CPR/AED-trained individuals to someone nearby having a sudden cardiac arrest.

PulsePoint currently has over 8,600 active monthly users and more than 400 AEDs registered.




DOWNLOAD THE APP

SCFD History Fact: In 1984, SCFD began providing Advanced Life Support (ALS) in addition to Basic Life Support (BLS) when transporting patients to the hospital.

COMMUNITY PARAMEDICINE

The Community Paramedicine Program is an innovative program designed to meet the needs of specific patient groups, such as citizens who frequently call 911 for falls or other medical issues. It remains a vital resource for the community. By harnessing the specialized skills of paramedics, the program offers invaluable guidance, resources, and support.


2,143
HOME VISITS


10%
ENROLLMENT
RATE


143
RESIDENTS
ENROLLED


75%
GRADUATION
RATE*

**Average time in program was one to three months.*

One of the key strengths of Community Paramedicine is empowering clients and connecting them to the right care and services they need.

Local non-profits provide needed resources, such as walkers, durable medical equipment, food, medication delivery, and assistance with accessing important information like veterans' benefits.

For more
Information



A SPECIAL THANKS TO OUR RESOURCE PARTNERS



Community Paramedics pictured with staff from the Paralyzed Veterans of America Central Florida Chapter's facility in Sanford. [L-R] Firefighter/Paramedic Jason Rappa, Firefighter/Paramedic Elaine Curry, Vice President Roger Sack, Executive Director John DeMauro, and Office Manager Joanne Poretti.

Paralyzed Veterans of America Central Florida Chapter – This veterans service organization provides a platform of advocacy, education, and research for veterans paralyzed as a result of a spinal cord or injury or dysfunction. Their efforts afford them with the highest quality of healthcare and life experiences.



Community Paramedics pictured with Cyndy Kingston, President of Senior Intervention Group.

Senior Intervention Group – This organization is dedicated to addressing social determinants of health by sustaining and improving the quality of life for the growing senior population in Seminole County.



“When my husband passed away, it was extremely a difficult time after 51 years of marriage. However, knowing the goodness and care of Seminole County Fire Department's Community Paramedics was a godsend. They – along with my family and friends – were there for me and I know they are there for many residents who need it.”

- Gayle Coverman, Community Paramedicine client

Community Paramedicine client Gayle Coverman of Longwood was first connected to the program in 2022 when she received a COVID booster shot at home. Later, her husband Randall was diagnosed with Lewy body dementia, a condition with Parkinson's-like symptoms that runs in his family.



SPECIAL OPERATIONS

SCFD is an all-hazards Fire Department with plenty of special teams and opportunities for training and professional growth.

Special Teams & Other Opportunities

- Special Hazards & Operations Team (SHOT) (65 members)
- Tower Team (57 members)
- Tanker Team (41 members)
- Prescribed Burn Team (45 members)
- Bike Team (15 members)
- Trail Responses
- Marine Unit Operations (e.g., boats, airboats, etc.)
- Dive Team
- Aerial Rescue Specialists (in cooperation with the Seminole County Sheriff's Office)
- Large Animal Rescue
- Honor Guard
- Peer Fitness Team
- Urban Search & Rescue Task Force
- Trainers and Instructors

“The Seminole County Fire Department offers many specialized teams, so the growth opportunities are limitless. Being part of the Tower Team as well as training others in aerial operations and other special operations is something I love about my career.”

- Engineer/Paramedic Jorge Gonzalez, Tower Team member since 2018



DEPLOYMENTS

The mission of the US&R Team is to respond to natural and man-made disasters and to provide search and rescue, medical support, communications and damage assessment. SCFD has 35 members on US&R Task Force 4. The team has multiple specialized trainings and requirements.

US&R TF4 had several deployments in 2024, including to:

- Manatee County for Hurricane Milton's impact
- The Big Bend area (Jefferson, Taylor, Dixie, and Levy Counties) for Hurricane Helene's impact
- Sarasota County for Hurricane Debby's impact

Members of SCFD's Burn Team are part of an interagency team with the state of Florida and the U.S. Forest Service. They deployed to many places throughout the United States to help fight wildfires.



SCFD History Fact: The Special Hazards and Operations Team (SHOT) is 30 years old and the Tower Team was founded nearly two decades ago.



SCFD hosted a large animal technical rescue class in conjunction with the University of Florida College of Veterinary Medicine's Veterinary Emergency Treatment Center. SCFD has responded to numerous large animal responses, particularly in the Geneva and Chuluota areas.





FIRE PREVENTION

The Fire Prevention team is dedicated to ensuring the safety of both businesses and residences. Their work involves educating the public and enforcing Fire Codes, which assist businesses and homeowners in mitigating common fire hazards.



**compared to 2023*



The Fire Prevention team conducting life safety and fire protection inspections at Fire Station 39.



THE FIRE PREVENTION TEAM DISTRIBUTED AND INSTALLED 241 SMOKE ALARMS, MAKING 181 HOMES SAFER

Having working smoke alarms can reduce the risk of death in home fires by 50%.

SCFD is a proud partner of the American Red Cross.



American Red Cross, SFD, SCFD set record for smoke alarm installations
The Sanford Fire Department, the American Red Cross of Central Florida, and the Seminole County Fire Department recently set a record in the Greater Orlando area for smoke alarm installations. (Above, left, below) The group installed 372 free smoke alarms in 196 homes in Carriage Cove, a manufactured homes community in Sanford. The effort was part of Fire Prevention Month and more than 80 volunteers participated, including: 3 Lockheed Martin volunteers, 15 Youth Red Cross volunteers, 12 Red Cross volunteers, 24 MIRA USA volunteers, and 26 Seminole County/Sanford Fire Department staff.



The Fire Prevention team offers fire safety classes for businesses, various community groups, and homeowners' associations. Education is a key part of protecting people, homes, and property from fire risks.



SCFD History Fire Fact: When the Department was founded in 1974, it only had one designated fire inspector position.

PROFESSIONAL STANDARDS & TRAINING

The SCFD's 19-acre, 44,000-square-foot Fire Training Center in Longwood serves as the central hub for all Fire, EMS, and Special Operations training in Seminole County.

Trainings Include:

- Quarterly Training
- Live Fire Training
- EMS Training
- Extrication/Bailout Training
- Pump Ops Training
- Trails Training

Special Ops Training:

- Confined Space Rescue
- Vehicle Machinery Rescue (VMR)
 - VMR Operations
 - VMR Technician
- Structural Tower Rescue
- Trench Rescue
- Water Rescue Training
(Surface, Boat & Dive)
- Hazardous Materials & Tech Training
- Rope Rescue:
 - Rope Operations
 - Rope Technician
 - Structural Tower Rescue
 - Advanced Rigging
 - Tree Rescue

Training Hours by Category in 2024

Driver/Operator Training – **9,580 hours**

EMS Training – **17,088 hours**

Firefighter Training – **113,584 hours**

Hazardous Materials Training – **3,949 hours**

Officer Training – **9,792 hours**

Recruit Training – **7,920 hours**

Training Drills – **20,805 hours**

**Total Fire & EMS Training Hours:
182,718**

Over 50 total Live Fire Training sessions were conducted at SCFD's Burn Building in 2024.



“There’s a huge family aspect to the fire service, which drew me to this career. At SCFD, we also have specialized teams and lots of opportunities for growth and advancement.”

- Firefighter Logan Terrell, Class 24-02

In 2024, there were two graduating recruit classes – Class 24-01 and Class 24-02. These added 32 new personnel to the Department.



In addition to SCFD training all its personnel, last year SCFD instructors trained over 400 employees from more than 20 external fire departments in various classes.



The Training Center opened in 2003 and has been a fire training hub for local, regional, state, and national fire departments.



FISCAL

BUDGET: **\$92.4 MILLION**
MILLAGE: **2.7649**

Fiscal Year 2024 Budget Breakdown

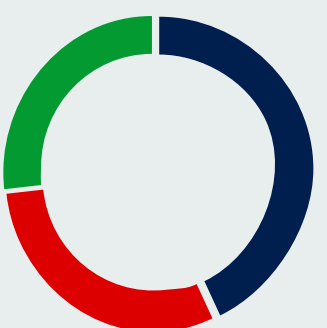
	FY24 Adopted Budget	FY24 Actuals	FY24 Expenditures
Personnel Services	\$71,991,703	\$72,910,845	70.6%
Operating Expenditures	\$7,338,238	\$8,303,318	8.0%
Internal Service Charges	\$6,437,917	\$6,689,874	6.5%
Capital Outlay	\$5,891,447	\$14,158,777	13.7%
Grants & Aids	\$785,000	\$1,188,755	1.2%
Interfund Transfers Out	-	\$18,048	0.02%
Grand Total	\$92,444,305	\$103,269,617	100.0%

574 Full-Time Personnel



EMERGENCY COMMUNICATIONS

SCFD's 911 Emergency Communication Team consists of 37 personnel.



■ Calls to 911: 55,780
■ Inbound Non-Emergency Calls: 37,292
■ Outbound Non-Emergency Calls: 34,622
Total Calls: 127,694



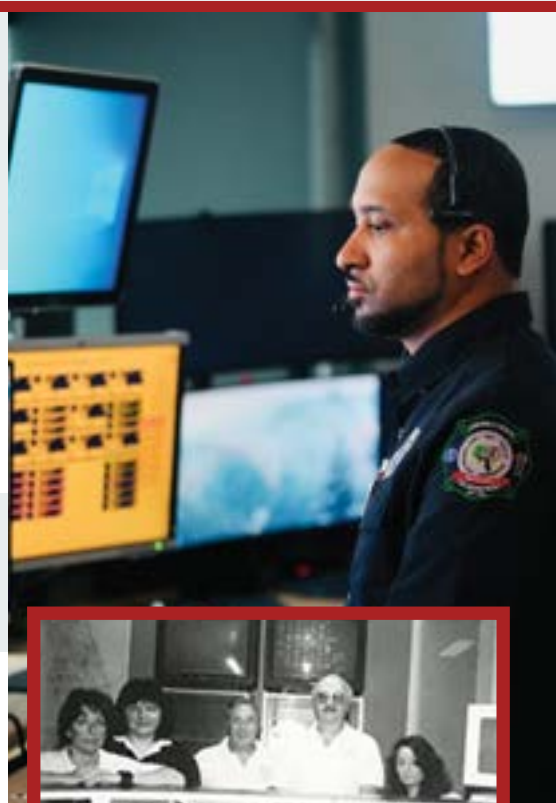
152
AVERAGE 911 CALLS
ANSWERED PER DAY



97.8%
911 CALLS ANSWERED
WITHIN 10 SECONDS



**2 MINUTES,
54 SECONDS**
AVERAGE CALL DURATION
**OCTOBER 10,
2024**
BUSIEST DAY OF THE YEAR
THURSDAY
BUSIEST AVERAGE DAY
NOON
BUSIEST AVERAGE TIME



SCFD History Fact: Before consolidating to SCFD, there were 28 different phone numbers citizens called for emergencies depending on where they resided.

PUBLIC INFORMATION & COMMUNITY OUTREACH

This year, SCFD hosted more than 25 media outreach events, proactively ensuring the community remains informed about important public safety topics and initiatives. In addition, the Public Information Officer (PIO) Team handled over 1,070 media inquiries and stories, averaging 89 stories per month, many of which featured interviews with subject matter experts.



20,238
FOLLOWERS
@SCFD.1974



5,819
FOLLOWERS
@seminolecountyfd



4,859
FOLLOWERS
@scfdpio



SCFD participated in 613 Community Outreach events (averaging 51 events per month) reaching more than 100,000 residents! Events included:

- Fire station visits
- Community educational events, including CPR trainings, health fairs, and school visits
- Open House at Station 11
- Car seat installations and inspections

This year, SCFD hosted a Back-to-School Bash with all Boys & Girls Club Seminole branches, reaching more than 120 kids.



SCFD teaches nearly 500 9th & 11th Grade Students at WSHS Hands-Only CPR



Keeth Elementary Has Heart!

As students at Keeth Elementary School enjoy the fun and sun of their summer vacations, their families can be confident they have some life-saving skills should an emergency arise. As part of the school's Keeth Has Heart curriculum, the Seminole County Fire Department recently taught every single K-5 student at Keeth how to administer hands-only CPR. The Keeth Has Heart program also includes lessons about healthy living and participation in the Kids' Heart Challenge prize program launched by the American Heart Association.



The Save a Life Seminole hands-only CPR initiative held 45 classes and trained 2,471 residents, a 39% increase from the previous year.

The Department values its partnerships with the American Red Cross and Seminole County Public Schools, which requires its 9th and 11th graders to learn basic first aid and CPR.

Last year, SCFD also taught CPR to all 5th graders at Keeth Elementary School in Winter Springs.



SCFD Certified Child Passenger Safety Technicians helped install and inspect 80 car seats. One third of car seats are installed incorrectly and this initiative promotes child passenger safety in the community.



Visit www.seminolecountyfl.gov/communityrelations



A visit to Fire Station 16 when Will Harris was a 3rd grade student at Sabal Point Elementary School. He is now a Firefighter/Paramedic.

SCFD History Fact: Many local young people were inspired to become firefighters at SCFD because their elementary school class visited a fire station!



DROWNING PREVENTION

Seminole County Receives National Drowning Prevention Grant



Pediatric drownings are a significant public health concern, and the leading cause of death for children ages 1 to 4. Last year, there were 10 pediatric drownings in Seminole County.

In 2024, Seminole County was awarded a two-year pool safety grant of \$194,535 by the U.S. Consumer Product Safety Commission for pool safety, education, training, and enforcement. Only eight state and local governments nationwide were selected to receive portions of more than \$2 million in Pool Safety Grant Program funds.

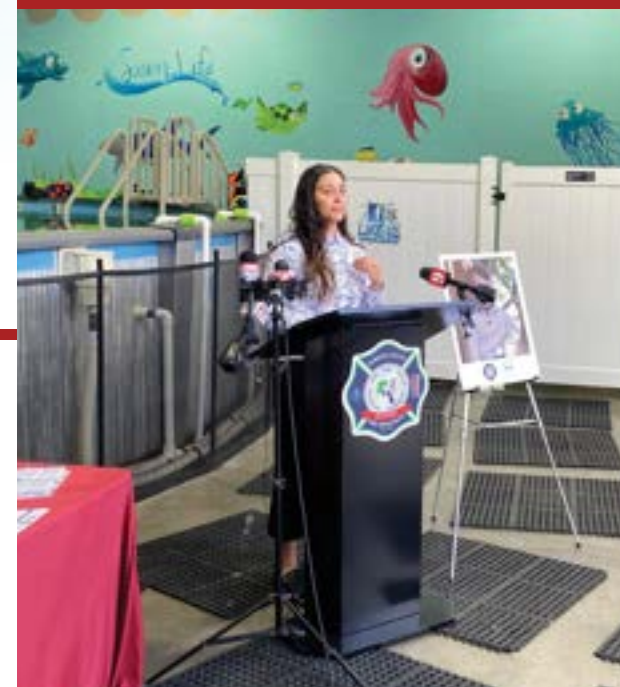
Seminole County's Community Health Division, SCFD, and the Gunner Martin Foundation partnered to earmark the funds for:

- Free survival swim lessons for Seminole County youth.
- Education to first responders and code enforcement officers to identify potential pool safety hazards and other drowning prevention methods.
- Drowning prevention education and outreach to residents, including free door and pool alarms.

For more Information



3-year-old Kandace benefits from the drowning prevention grant by enrolling in free survival swim lessons at Swim Life.



Drowning prevention advocate Christina Martin, wife of SCFD Firefighter Chris Martin, speaks to the media about the drowning prevention grant. The Martin family lost their son Gunner to a pool drowning.



SCFD History Fact: With 200+ waterways across Seminole County, SCFD created its Dive Team in 1976 to respond to water incidents.



SCFD FLEET

- Frontline Units include:**
- 16 Engines
 - 21 Rescues
 - 6 Aerials (4 Towers and 2 Quints)
 - 1 Squad Heavy Rescue
 - 1 Shift Commander
 - 4 Battalions
 - 1 EMS 1
 - 1 Incident Command Technician (Tech 1)
 - 5 Tankers
 - 8 Woods Trucks
 - 7 Marine Units
 - 5 UTVs
 - 2 6x6 High-Water Vehicles
 - 1 Bariatric Transport Unit
 - 1 Mobile Command Unit
 - 1 Mass Casualty Unit
 - 1 AmbuBus
 - 1 Rehab Unit



New Rehab 1/Air & Light Vehicle

Rehab 1 is as a multifunctional apparatus that serves as an air/light and rehab unit. Rehab 1 is deployed to incidents with long durations due to extreme climates for health and safety of fire personnel.

What does Air & Light mean? The apparatus includes a remote controlled light tower, an air compressor, and fill station for breathing apparatuses (air). These help fire personnel to continue working on scene or to be back in full ready status before leaving the scene.



FIRE STATIONS

Abbreviation Key
 E = Engine | R = Rescue | T = Tower | **BC**= Battalion Chief

BATTALION 1



Station 11

Constructed in 2023
SERVING ALTAMONTE SPRINGS
 2721 S. Ronald Reagan Boulevard,
 Altamonte Springs
Unit Responses: E11 – 2,845
 R11 – 3,279
Other Units: Woods Truck 11
 Boat 11
 UTV 11



Station 12

Constructed in 1985
SERVING ALTAMONTE SPRINGS
 325 Douglas Avenue,
 Altamonte Springs
Unit Responses:
 BC1 – 1,165
 E12 – 4,102
 R12 – 3,813
 T12 – 1,707



2nd
Busiest
Station

Station 13

Constructed in 2008

SERVING FOREST CITY/BEAR LAKE

3860 E. State Road 436, Apopka

Unit Responses:

E13 – 3,964

R13 – 3,328

T39 – 1,418

R14 – 1,139*

Tanker 13

**Peak load unit operates 9 A.M. – 7 P.M., Monday – Friday*



Station 14

Constructed in 1992

SERVING ALTAMONTE SPRINGS

600 Hattaway Drive,
Altamonte Springs

Unit Responses:

E14 – 1,301



5th
Busiest
Station

Station 22

Constructed in 1984

SERVING FERN PARK

7122 US Highway 17-92,
Casselberry

Unit Responses:

E22 – 2,767

R22 – 2,660

BATTALION 2



Station 21

Constructed in 2005

SERVING CASSELBERRY

681 Seminola Blvd., Casselberry

Unit Responses:

E21 – 2,309

EMS1

R21 – 2,028

Rehab 1

R28 – 857*

**Peak load unit operates 9 A.M. – 7 P.M., Monday – Friday*

Station 23

Constructed circa 1970

SERVING HOWELL BRANCH

4810 Howell Branch Road, Winter Park

Unit Responses:

E23 – 1,998

R23 – 1,853

Station 25

Constructed in 1975

SERVING CASSELBERRY

1055 Red Bug Lake Road, Casselberry

Unit Responses:

T25 – 2,817

R25 – 2,588



Station 26

Constructed in 1994

SERVING WINTER SPRINGS/ TUSCAWILLA

850 Northern Way, Winter Springs

Unit Responses:

E26 – 1,771

R26 – 1,670

Station 27

Constructed in 1990

SERVING WINTER SPRINGS/RED BUG

5280 Red Bug Lake Road,
Winter Springs

Unit Responses:

BC2 – 727

E27 – 2,806

R27 – 2,268

T27 – 943

Station 29

Constructed in 2018

SERVING JAMESTOWN/ALOMA WOODS

2300 Via Loma Drive, Oviedo

Unit Responses:

E29 – 1,236

R29 – 1,235

Other Units:

Woods Truck 29

BATTALION 3



Station 16

Constructed in 1984

SERVING WEKIVA SPRINGS/ SABAL POINT

930 Wekiva Springs Road, Longwood

Unit Responses:

E16 – 1,975

R16 – 2,198

Other Units:

Woods Truck 16

Boat 16

Station 34

Constructed in 1981

SERVING PAOLA/SANFORD

4905 Wayside Drive, Sanford

Unit Responses:

Quint34 – 2,874

R34 – 2,318

Other Units:

Tanker 34

Woods Truck 34

Boat 34

Boat 39

UTV 34

Station 35

Constructed in 1989

SERVING SANFORD/FIVE POINTS

201 W. County Home Road, Sanford

Unit Responses:

Shift Commander

E35 – 1,871

R35 – 1,728

Squad 2 – 1,042

Other Units:

Boat 35

Woods Truck 35

Dive Unit 35



Station 36

Constructed in 1985

SERVING LAKE MARY/HEATHROW

6200 W. Lake Mary Blvd., Lake Mary

Unit Responses:

BC3 – 456

E36 – 2,676

R36 – 2,123



Station 42

Constructed in 1990

SERVING GENEVA

320 W. State Road 46, Geneva

Unit Responses:

E42 – 647

R42 – 580

Tanker 42

Other Units:

Woods Truck 42

Airboat 42

UTV 42

BATTALION 4



Station 24

Constructed in 1975

SERVING WINTER SPRINGS

102 N. Moss Road, Winter Springs

Unit Responses:

Tech 1

Quint24 – 2,028

R24 – 1,859

Tanker 24



Station 43

Constructed in 1984

SERVING CHULUOTA

110 E. 7th Street, Chuluota

Unit Responses:

E43 – 667

R43 – 600

Tanker 43

Other Units:

Woods Truck 43

UTV 43



Station 41

Constructed in 1981

SERVING MIDWAY

3355 E. State Road 46, Sanford

Unit Responses:

BC4 – 392

E41 – 1,647

R41 – 1,807

Other Units:

Woods Truck 41

Boat 41

UTV 41



Station 65

Constructed in 2000

SERVING UCF/CARILLON

*Joint Station with Orange County
Fire Rescue Department*

4999 North Orion Boulevard, Orlando

Unit Responses:

Seminole County Rescue 65 – 1,931**

Orange County Jurisdiction 860

Seminole County Jurisdiction 1,071

Orange County Engine 65 – 1,767**

Orange County Jurisdiction 661

Seminole County Jurisdiction 1,106

**Some calls run outside Seminole & Orange County Jurisdiction





seminolecountyfd



SCFD.1974



scfdpio



seminolecountyfl.gov/FireDepartment