

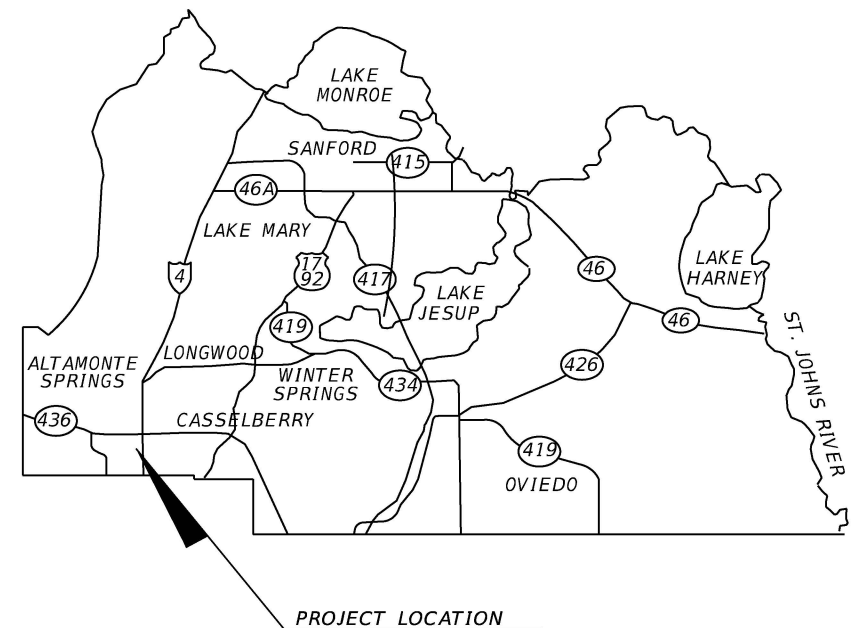
## COMPONENTS OF CONTRACT PLANS SET ROADWAY PLANS

*SEMINOLE COUNTY  
ENGINEERING DIVISION*

## CONTRACT PLANS



SPRING VALLEY FARMS UNDERDRAIN  
SEMINOLE COUNTY CIP No. 02107073



## INDEX OF DRAINAGE PLANS

<i>SHEET NO.</i>	<i>SHEET DESCRIPTION</i>
<i>1</i>	<i>KEY SHEET</i>
<i>2</i>	<i>SUMMARY OF PAY ITEMS</i>
<i>3</i>	<i>TYPICAL SECTION DETAILS</i>
<i>4</i>	<i>SUMMARY OF DRAINAGE STRUCTURES</i>
<i>5</i>	<i>PROJECT LAYOUT AND CONTROL</i>
<i>6</i>	<i>GENERAL NOTES</i>
<i>7-9</i>	<i>PLAN SHEET</i>
<i>10-12</i>	<i>DRAINAGE STRUCTURES</i>
<i>13</i>	<i>EROSION CONTROL PLAN</i>
<i>14-16</i>	<i>UTILITY ADJUSTMENT SHEET</i>
<i>SQ-1 - SQ-5</i>	<i>SUMMARY OF QUANTITIES</i>

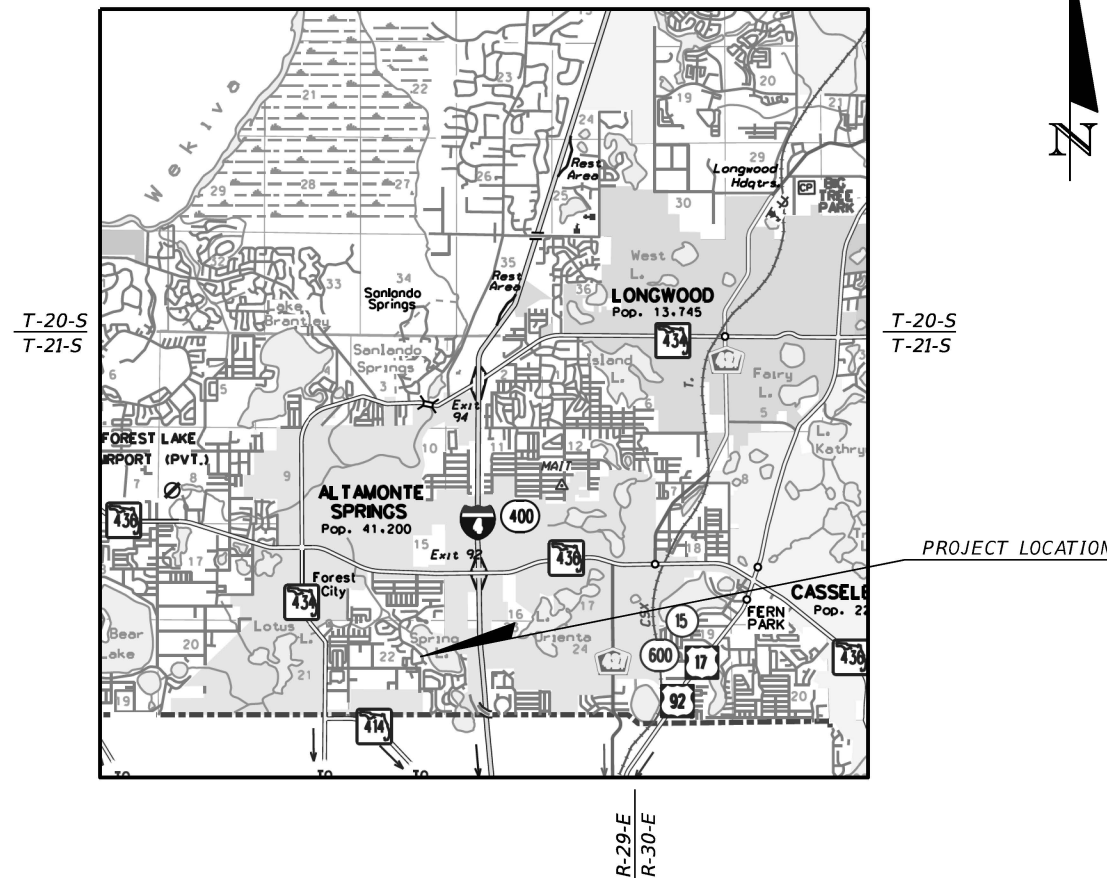
**GOVERNING STANDARD PLANS:**

*Florida Department of Transportation, FY2020-21 Standard Plans for Road and Bridge Construction and applicable Interim Revisions (IRs).*

Standard Plans for Road Construction and associated IRs are available at the following website: <http://www.fdot.gov/design/standardplans>

**GOVERNING STANDARD SPECIFICATIONS:**

Florida Department of Transportation, July 2021 Standard Specifications  
for Road and Bridge Construction at the following website:  
<http://www.fdot.gov/programmanagement/Implemented/SpecBooks>



*BOARD OF COUNTY COMMISSIONERS*

BOB DALLARI	DISTRICT 1
JAY ZEMBOWER	DISTRICT 2
<b>LEE CONSTANTINE</b>	<b>DISTRICT 3</b>
AMY LOCKHART	DISTRICT 4
ANDRIA HERR	DISTRICT 5

JOSEPH R. ABEL, INTERIM COUNTY MANAGER

ROADWAY PLANS  
ENGINEER OF RECORD:

DINO E. LUCARELLI, P.E. NO. 39556  
SEMINOLE COUNTY PUBLIC WORKS ENGINEERING  
100 E FIRST STREET  
SANFORD, FL 32771  
(407) 665-5661

COUNTY PROJECT MANAGER:

DINO E. LUCARELLI, P.E.  
Email: [dlucarelli@seminolecountyfl.gov](mailto:dlucarelli@seminolecountyfl.gov)

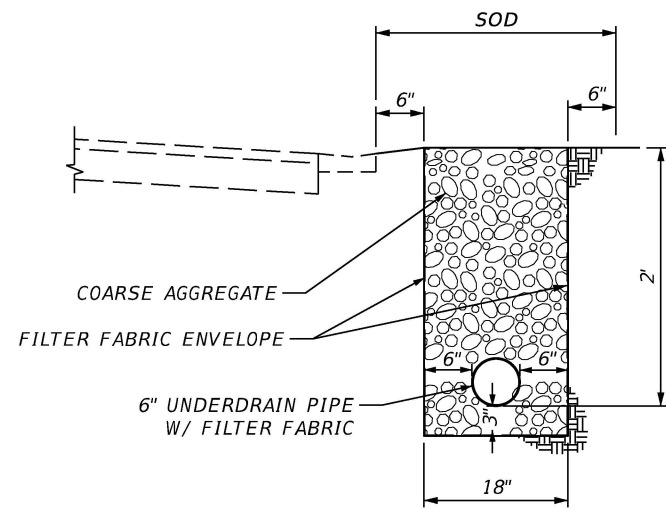
<i>FISCAL YEAR</i>	<i>SHEET NO.</i>
22	1

SUMMARY OF PAY ITEMS			
ITEM NUMBER	ITEM	UNIT	QUANTITY
101-1	MOBILIZATION	LS	1
102-1	MAINTENANCE OF TRAFFIC	LS	1
102-99	CHANGEABLE VARIABLE MESSAGE SIGN (TEMPORARY)	ED	60
104-13-1	STAKED SILT FENCE (TYPE III)	LF	1734
104-18	INLET PROTECTION SYSTEM	EA	10
110-1-1	CLEARING AND GRUBBING	LS	1
110-4-1	REMOVAL OF EXISTING CONCRETE	SY	165
110-7-2	MAILBOX, RELOCATE EXISTING, STANDARD SINGLE	EA	9
121-70	FLOWABLE FILL	CY	2.2
425-1-541	INLET DT BOT (TYPE D) (< 10')	EA	4
430-174-112-B	HDPE PIPE CULVERT, SD SMOOTH WALL, 12"	LF	391
440-1-10	UNDERDRAIN (TYPE I)	LF	1962
520-2-4	CONCRETE CURB, TYPE D	LF	28
522-1	SIDEWALK (CONCRETE) (4" THICK)	SY	7
522-2	SIDEWALK (CONCRETE)(6" THICK)	SY	219
570-1-2	PERFORMANCE TURF, SOD	SY	469

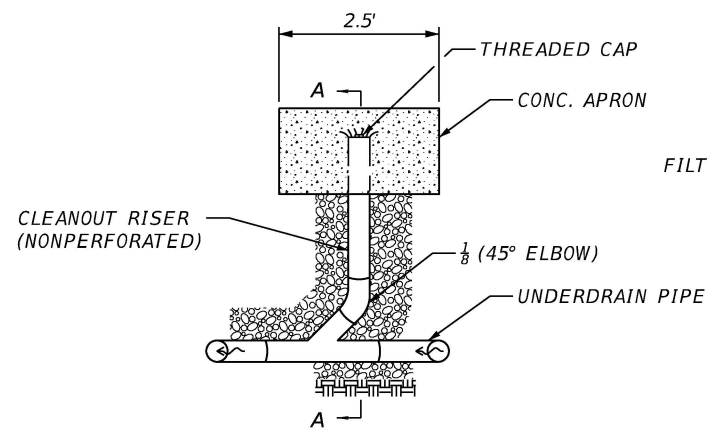
101-1	INCLUDES THE COST FOR CONTRACTOR QUALITY CONTROL (CQC) TESTING FOR ANY OF THE FOLLOWING THAT ARE NECESSARY TO COMPLETE THE CONSTRUCTION OF THIS PROJECT: ASPHALT, CONCRETE, EARTHWORK, INCLUDES THE COST OF CAPPING AND REPAIR OF ANY EXISTING IRRIGATION SYSTEM LOCATED WITHIN THE RIGHT-OF-WAY. INCLUDES THE COST OF TEMPORARY DRAINAGE DURING CONSTRUCTION TO ELIMINATE AND FLOODING OF PRIVATE PROPERTY AND TO MAINTAIN EXISTING FLOWS WITHIN RIGHT-OF-WAY.
102-1	INCLUDES ALL ITEMS AND LABOR NECESSARY FOR THE IMPLEMENTATION OF THE TEMPORARY TRAFFIC CONTROL PLAN, PER APPLICABLE FDOT STANDARD PLANS, INDEXES (LATEST). INCLUDES THE COST FOR THE CONTRACTOR TO CLEAN THE JOB SITE OF CONSTRUCTION DEBRIS BEFORE LEAVING THE PROJECT SITE EACH DAY, FOLLOWING THE CONSTRUCTION, THE CONTRACTOR SHALL THOROUGHLY CLEAN AND SWEEP THE PROJECT TO ASSURE ALL DEBRIS HAVE BEEN REMOVED.
102-99	INCLUDES THE COST FOR 2 PCMS TO BE SET-UP 7 DAYS PRIOR TO CONSTRUCTION AND FOR THE PROJECT DURATION, CONTRACTOR TO COORDINATE LOCATION WITH SEMINOLE COUNTY PROJECT MANAGER.
110-1-1	INCLUDES, BUT NOT LIMITED TO, THE REMOVAL AND DISPOSAL OF ALL OBSTRUCTIONS, VEGETATION, DEBRIS, TRIMMING OF TREES AND SHRUBS, ROOT REMOVAL EXISTING ASPHALT PAVEMENT AND BASE, DRAINAGE STRUCTURES, AND SIDE DRAINS, AS REQUIRED TO CONSTRUCT THE PROJECT. NO TREES ARE TO BE REMOVED WITHOUT APPROVAL FROM SEMINOLE COUNTY PROJECT MANAGER.
440-1-10	INCLUDES THE COST OF DEWATERING, TEMPORARY DRAINAGE, DIVERSION OF STORMWATER, COFFERDAMS, AND OTHER RELATED ACTIVITIES NECESSARY FOR THE CONSTRUCTION OF THE PROJECT.  ALSO INCLUDES OF PIPE, CLEANOUTS, AGGREGATE, FILTER FABRIC, AND CONNECTIONS TO EXISTING DRAINAGE STRUCTURES. EXISTING STRUCTURES SHALL BE CORED AND THE UNDERDRAIN CONNECTED AND SEALED TO THE STRUCTURE.
522-2	INCLUDES THE COST OF THE REMOVAL AND REPLACEMENT OF EXISTING BRICK PAVER DRIVEWAYS TO MATCH EXISITING LAYOUT. ALSO, INCLUDES THE COST OF WATER VALVE ADJUSTMENTS AND OTHER UTILITY ADJUSTMENTS AND/OR UTILITY COORDINATION DUE TO SIDEWALK AND/OR DRIVEWAY RE-CONSTRUCTION.
570-1-2	INCLUDES THE COST AND APPLICATION OF FERTILIZER AND WATER IN ACCORDANCE WITH THE STANDARD SPECIFICATIONS. INCLUDES THE COST OF TO BE PLACED AS DIRECTED BY SEMINOLE COUNTY PROJECT MANAGER. TYPES OF SOD MAY VARY, CONTRACTOR TO MATCH EXISTING SOD.

REVISIONS				 <b>SEMINOLE COUNTY</b> <i>FLORIDA'S NATURAL CHOICE</i>	<b>SEMINOLE COUNTY</b> <b>ENGINEERING DIVISION</b>  DINO E. LUCARELLI P.E. No. 39556 100 East 1st. Street Sanford, FL 32771	<b>SEMINOLE COUNTY</b> <b>ENGINEERING DIVISION</b>		<i>SUMMARY OF PAY ITEMS</i>	SHEET NO.
DATE	DESCRIPTION	DATE	DESCRIPTION			ROAD	COUNTY CIP No.		2
						SPRING VALLEY LOOP	02107073		

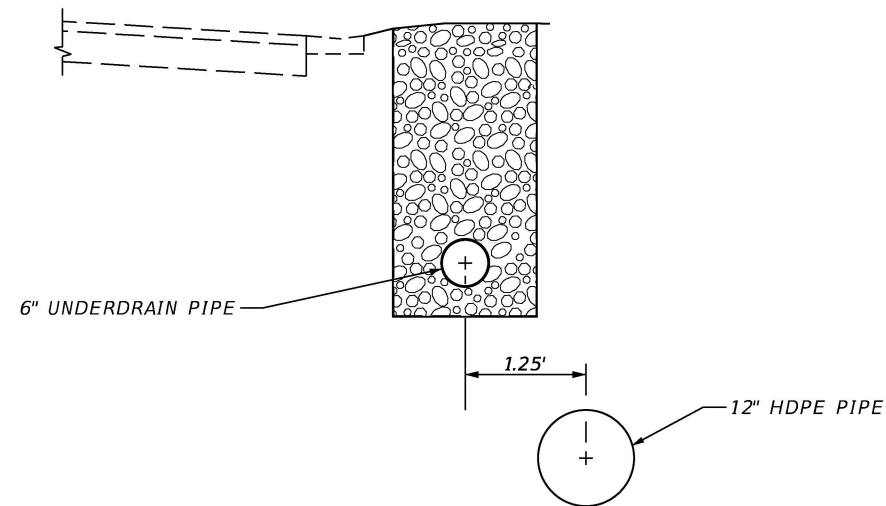
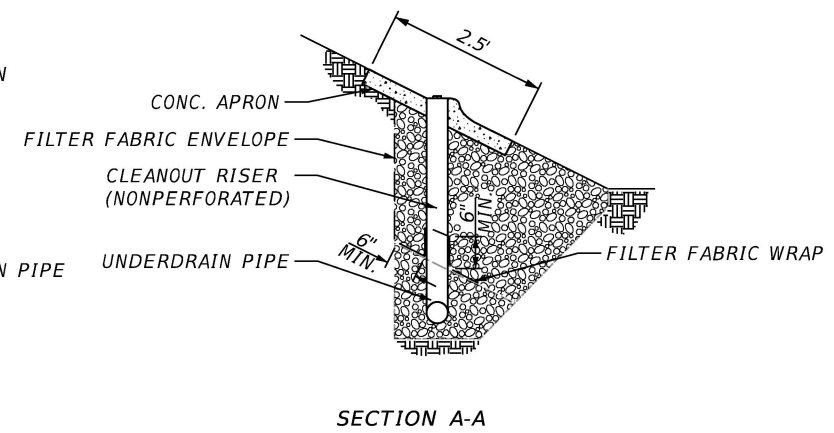




UNDERDRAIN TYPICAL DETAIL

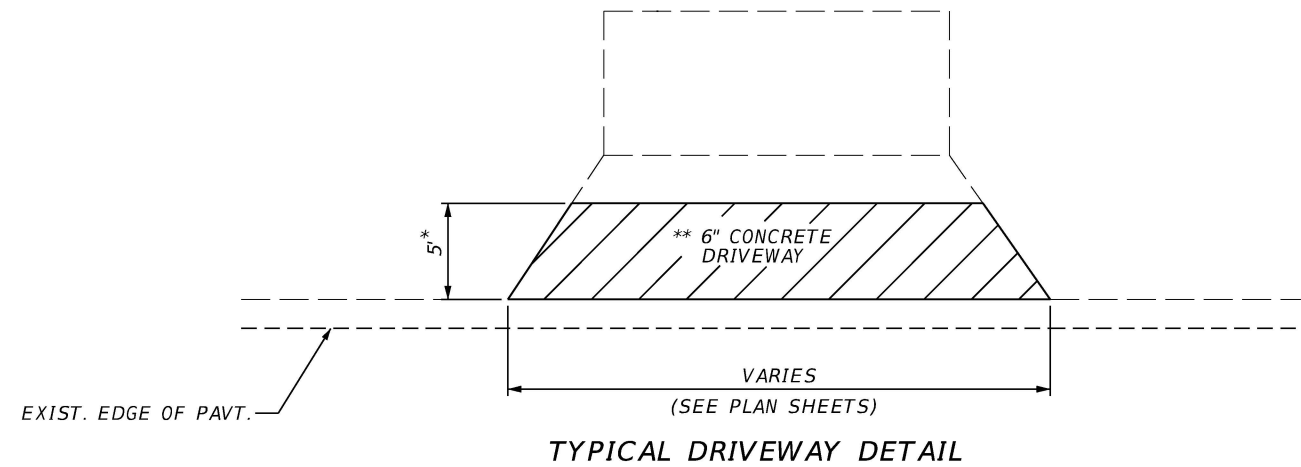


CLEANOUT DETAIL



TYPICAL SECTION


STA 105+08.71 TO STA 107+66.17



TYPICAL DRIVEWAY DETAIL

\* UNLESS OTHERWISE NOTED IN PLANS

\*\* EXISTING PAVERS ARE TO BE REMOVED AND RESET, AT BRICK PAVER DRIVEWAYS

REVISIONS				 <b>SEMINOLE COUNTY ENGINEERING DIVISION</b> DINO E. LUCARELLI P.E. No. 39556 100 East 1st. Street Sanford, FL 32771	<b>SEMINOLE COUNTY ENGINEERING DIVISION</b>		<b>TYPICAL SECTION DETAILS</b>	SHEET NO.
DATE	DESCRIPTION	DATE	DESCRIPTION		ROAD	COUNTY CIP No.		
					SPRING VALLEY LOOP	02107073		3

QUANTITY	STR. NO.	STATION	SIDE	DESCRIPTION	BARRELS	STORM DRAIN	DITCH BOTTOM INLET	REMARKS
						ROUND, HDPE		
						12"		
P	S-1	104+69.72	RT	INLET, PIPE	1	39	1	
F								
P	S-2	105+08.71	RT	INLET, PIPE	1	268	1	
F								
P	S-3	107+66.07	RT	INLET	1		1	
F								
P	S-4	109+36.73	LT	INLET, PIPE	1	84	1	
F								
Summary:						391	4	
Total Summary:						391	4	

REVISIONS				 <div>SEMINOLE COUNTY <u>ENGINEERING DIVISION</u></div> <div>DINO E. LUCARELLI P.E. No. 39556 100 East 1st. Street Sanford, FL 32771</div>	SEMINOLE COUNTY ENGINEERING DIVISION		SUMMARY OF DRAINAGE STRUCTURES	SHEET NO.
DATE	DESCRIPTION	DATE	DESCRIPTION		ROAD	COUNTY CIP No.		4
					SPRING VALLEY LOOP	02107073		



CONTROL POINT COORDINATE DATA -  $\varnothing$  SPRING VALLEY LOOP

- 1

STA. 103+85.69 (11.66 RT)  
NAIL & DISK  
SSMC TRAV PT.  
NORTHING: 1568502.94  
EASTING: 528381.21  
ELEV: 69.82
- 2

STA. 106+52.89 (9.83 RT)  
NAIL & DISK  
SSMC TRAV PT.  
NORTHING: 1568746.51  
EASTING: 528484.67  
ELEV: 67.05
- 3

STA. 109+43.52 (16.63 LT)  
NAIL & DISK  
SSMC TRAV PT.  
NORTHING: 1568980.21  
EASTING: 528326.86  
ELEV: 66.21
- 4

STA. 111+75.96 (11.27 LT)  
NAIL & DISK  
SSMC TRAV PT.  
NORTHING: 1569133.61  
EASTING: 528152.15  
ELEV: 66.43
- 5

STA. 114+47.81 (12.52 LT)  
NAIL & DISK  
SSMC TRAV PT.  
NORTHING: 1569307.26  
EASTING: 527942.99  
ELEV: 66.38

CURVE DATA CUR1-2  
PI STA. = 104+80.03  
 $\Delta$  = 89° 59' 33" (LT)  
D = 24° 22' 52"  
T = 234.97  
L = 369.11  
R = 235.00  
PC STA. = 102+45.07  
PT STA. = 106+14.17

CURVE DATA CUR2-2  
PI STA. = 107+83.73  
 $\Delta$  = 49° 54' 23" (LT)  
D = 15° 43' 24"  
T = 169.56  
L = 317.40  
R = 364.40  
PC STA. = 106+14.17  
PT STA. = 109+31.58

REVISIONS				 <b>SEMINOLE COUNTY</b> <small>FLORIDA'S NATURAL CHOICE</small>	<b>SEMINOLE COUNTY</b> <b>ENGINEERING DIVISION</b>  DINO E. LUCARELLI P.E. No. 39556 100 East 1st. Street Sanford, FL 32771	<b>SEMINOLE COUNTY</b> <b>ENGINEERING DIVISION</b>		<b>PROJECT LAYOUT AND</b>  <b>CONTROL</b>	SHEET NO.
DATE	DESCRIPTION	DATE	DESCRIPTION			ROAD	COUNTY CIP No.		5
						SPRING VALLEY LOOP	02107073		

GENERAL NOTES

- UTILITY AGENCY/OWNER  
CHARTER COMMUNICATIONS  
CITY OF ALTAMONTE SPRINGS  
DUKE ENERGY DISTRIBUTION

CONTACT  
TRACY DOMOSTOY  
FRANKLIN CABRERA  
SAM KAISER

PHONE  
(407) 532-8511  
(407) 571-8342  
(407) 205-6932

1. GRADES SHOWN ARE FINISHED GRADES.

2. B.M. DATUM IS NORTH AMERICAN VERTICAL DATUM OF 1988. (NAVDD88)

3. EXISTING DRAINAGE STRUCTURES WITHIN CONSTRUCTION LIMITS SHALL REMAIN UNLESS OTHERWISE NOTED.

4. IT IS THE RESPONSIBILITY OF THE CONTRACTOR TO COMPLY WITH THE CURRENT STATE OF FLORIDA UNDERGROUND FACILITY DAMAGE PREVENTION AND SAFETY ACT AND/OR RELATED STATE LAW. THE FOLLOWING INFORMATION IS BEING PROVIDED BY SEMINOLE COUNTY IN AN EFFORT TO ASSIST THE CONTRACTOR BY LISTING UTILITIES THAT MAY PROVIDE SERVICE IN THE APPROXIMATE AREA OF PROPOSED CONSTRUCTION. THE CONTRACTOR SHOULD ASSUME OTHER UTILITIES THAT ARE NOT LISTED MAY PROVIDE SERVICE IN THE APPROXIMATE AREA OF PROPOSED CONSTRUCTION.

5. ALL SURVEY CORNERS INDICATED ON THE PLANS SHALL BE REFERENCED AND CERTIFIED BY A REGISTERED PROFESSIONAL LAND SURVEYOR PRIOR TO COMMENCEMENT OF CONSTRUCTION. ALL CORNERS DESTROYED OR OBLITERATED BY CONSTRUCTION SHALL BE RESET AND SO CERTIFIED BY THE LAND SURVEYOR PRIOR TO COMPLETION OF THE PROJECT. CERTIFIED SKETCHES SHALL BE SUBMITTED TO: SEMINOLE COUNTY ROADS-STORMWATER DIVISION, SURVEY SECTION

6. NO VIBRATORY COMPACTION SHALL BE USED ON THE PROJECT, INCLUDING ON EARTHWORK OR RECONSTRUCTION OUTSIDE THE ROADWAY SURFACE PAVING LIMITS.

7. ANY PUBLIC LAND CORNER WITHIN THE LIMITS OF CONSTRUCTION IS TO BE PROTECTED, IF A CORNE MONUMENT IS IN DANGER OF BEING DESTROYED AND HAS NOT BEEN PROPERLY REFERENCED, THE CONTRACTOR SHOULD NOTIFY THE COUNTY LOCATION SURVEYOR WITHOUT DELAY BY TELEPHONE.

8. ALL MATERIALS, CONSTRUCTION, INSPECTIONS AND TESTS SHALL, AS A MINIMUM, CONFORM TO FDOT STANDARD SPECIFICATIONS, AND SUPPLEMENTS THERETO, AND TO SPECIAL PROVISIONS FOR THIS PROJECT.

9. ALL SHOP DRAWING MUST BE APPROVED BY THE ENGINEER OF RECORD (E.O.R.) PRIOR TO FABRICATION.

10. PERMANENT TURNOUTS AND DRIVEWAY CONNECTIONS TO PRIVATE PROPERTY THAT LIE OUTSIDE THE LIMITS OF RIGHT-OF-WAY AND WHERE ACCESS RIGHTS HAVE NOT BEEN ACQUIRED SHALL BE CONSTRUCTED IN ACCORDANCE WITH THE TURNOUT DETAILS AND STATE STANDARD SPECIFICATIONS REFERENCED ON THE KEY SHEET OF THESE PLANS. THE COUNTY OR THE COUNTY'S CONTRACTOR SHALL NOT ISOLATE ADJACENT AND/OR REMAINDER PROPERTY UNLESS ACCESS RIGHTS ARE ACQUIRED. ACCESS SHALL BE PROVIDED TO SUCH PROPERTY WHENEVER CONSTRUCTION INTERFERES WITH THE EXISTING MEANS OF ACCESS.

11. ALL PRIVATE AND PUBLIC PROPERTY AFFECTED BY THE CONSTRUCTION WORK SHALL BE RESTORED TO A CONDITION EQUAL TO OR BETTER THAN THE EXISTING PRE-CONSTRUCTION CONDITION, UNLESS SPECIFICALLY EXEMPTED BY THE PLANS, COST TO BE INCIDENTAL TO OTHER CONSTRUCTION AND NO EXTRA COMPENSATION TO BE ALLOWED.

12. CONSTRUCTION SHALL INCLUDE REPLACING WITH MATCHING MATERIALS ALL DRIVEWAYS, WALKS, CURBS, ETC. THAT ARE DAMAGED OR REMOVED DUE TO CONSTRUCTION AND WORK SHALL BE COORDINATED WITH PROPERTY OWNERS.

13. ANY DRAINAGE PROBLEMS, CREATED BY CONSTRUCTION OR EXISTING BEFORE CONSTRUCTION, THAT ARE NOT ALLEVIATED SHOULD BE BROUGHT TO THE ATTENTION OF THE SEMINOLE COUNTY ENGINEERING DIVISION PROJECT MANAGER.

14. ANY GRASSED AREA OUTSIDE THE IMMEDIATE CONSTRUCTION AREA DISTURBED BY THE CONTRACTOR WILL BE SODDED AT THE CONTRACTOR'S EXPENSE.

15. ONE WEEK PRIOR TO CONSTRUCTION THE CONTRACTOR IS TO OBTAIN A "R/W UTILIZATION PERMIT" FROM SEMINOLE COUNTY PUBLIC WORKS, ENGINEERING DIVISION, 100 E. 1ST STREET, SANFORD, FL 32771, TELEPHONE 407-665-5674. PERMIT FEE WILL BE WAIVED.

16. IRRIGATION LINES DAMAGED DURING CONSTRUCTION ARE TO BE CAPPED IMMEDIATELY AND REPORTED TO THE SEMINOLE COUNTY ENGINEERING INSPECTOR. IT IS THE RESPONSIBILITY OF THE CONTRACTOR TO REPAIR AND/OR REPLACE THE DAMAGED IRRIGATION COMPONENTS TO PRE-CONSTRUCTION CONDITION AT CONTRACTOR'S EXPENSE PRIOR TO COMPLETION OF THE PROJECT.
- TEMPORARY TRAFFIC CONTROL NOTES
1. VEHICULAR AND PEDESTRIAN TRAFFIC SHALL BE MAINTAINED IN ACCORDANCE WITH FDOT STANDARD PLANS, INDEX 102 SERIES, THE STANDARD SPECIFICATIONS FOR ROAD AND BRIDGE CONSTRUCTION AND THE MANUAL ON UNIFORM TRAFFIC CONTROL DEVICES (MUTCD) AS A MINUMUM.

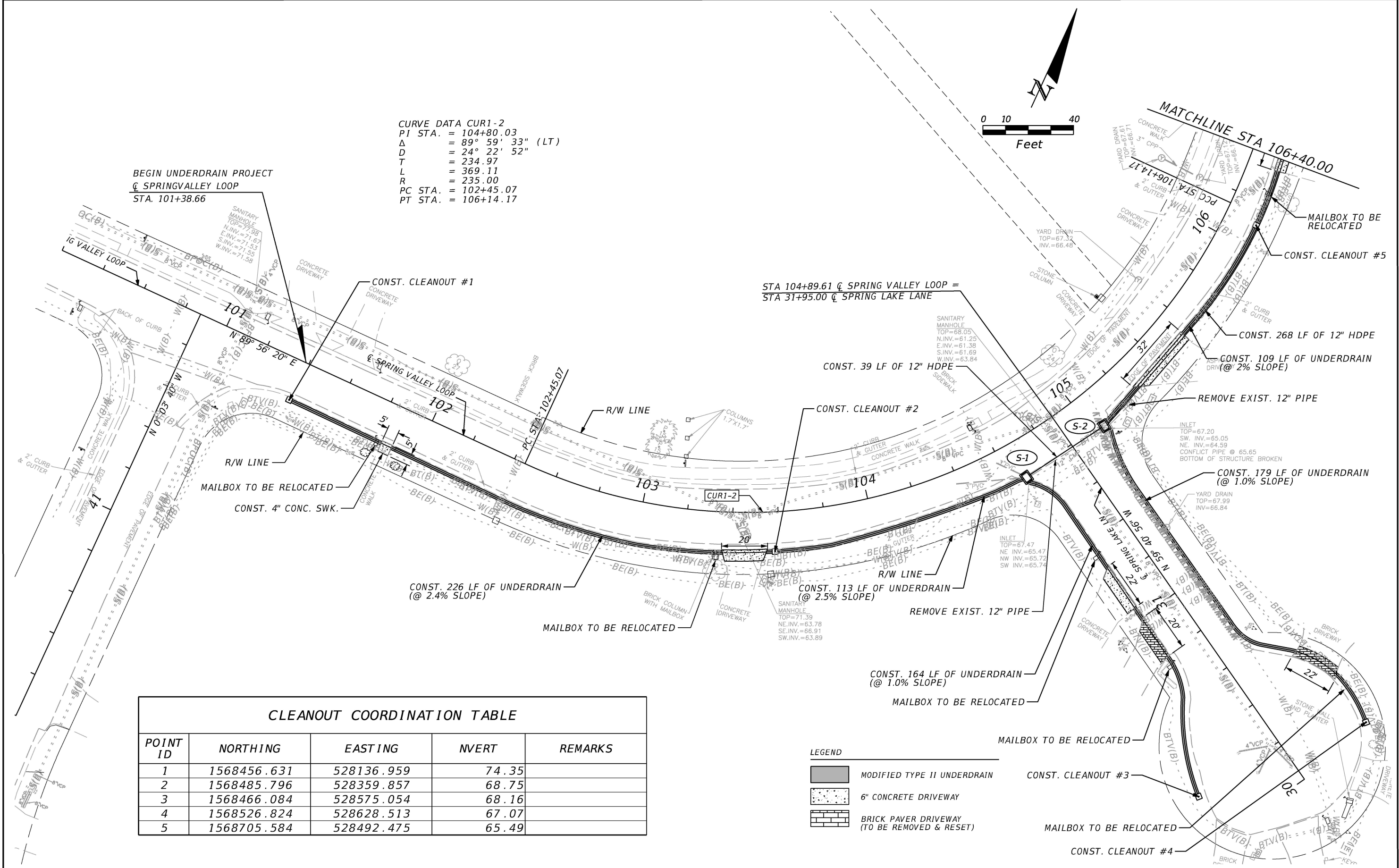
2. LANE CLOSURES SHALL BE PERMITTED ONLY DURING ACTIVE WORK PERIODS.

3. PORTABLE-CHANGEABLE MESSAGE SIGNS (PCMS) SHALL BE PROVIDED DURING, AND IN ADVANCE OF, ALL LANE CLOSURES. TWO PCMS, MINIMUM, SHALL BE PROVIDED FOR EACH LANE CLOSURE FROM SEVEN DAYS PRIOR TO CLOSURE THUR END OF CLOSURE.

4. SEMINOLE COUNTY IS ADMINISTERING THE CONSTRUCTION OF THIS PROJECT. IT IS THE COUNTY'S POLICY TO PLACE THE RESPONSIBILITY FOR MAINTENANCE OF TRAFFIC DURING CONSTRUCTION ON THE CONTRACTOR. THE CONTRACTOR WILL BE REQUIRED TO SUBMIT A TRAFFIC CONTROL PLAN SIGNED AND SEALED BY A STATE OF FLORIDA REGISTERED PROFESSIONAL ENGINEER TO THE COUNTY PRIOR TO BEGINNING THE PROJECT. THE APPLICATION AND REFERENCE OF SPECIFIC FDOT STANDARD PLANS INDICES IS ACCEPTABLE.
- | REVISIONS |             |      |             | <div><div><b>SEMINOLE COUNTY</b><br/><b>ENGINEERING DIVISION</b></div><div>DINO E. LUCARELLI<br/>P.E. No. 39556<br/>100 East 1st. Street<br/>Sanford, FL 32771</div></div> | SEMINOLE COUNTY<br>ENGINEERING DIVISION |                | GENERAL NOTES | SHEET<br>NO. |
|-----------|-------------|------|-------------|---|---|----------------|---------------|--------------|
| DATE      | DESCRIPTION | DATE | DESCRIPTION | ROAD  |   | COUNTY CIP No. |               |              |
|           |             |      |             | SPRING VALLEY LOOP  |   | 02107073       | 6             |              |
- hmcknight

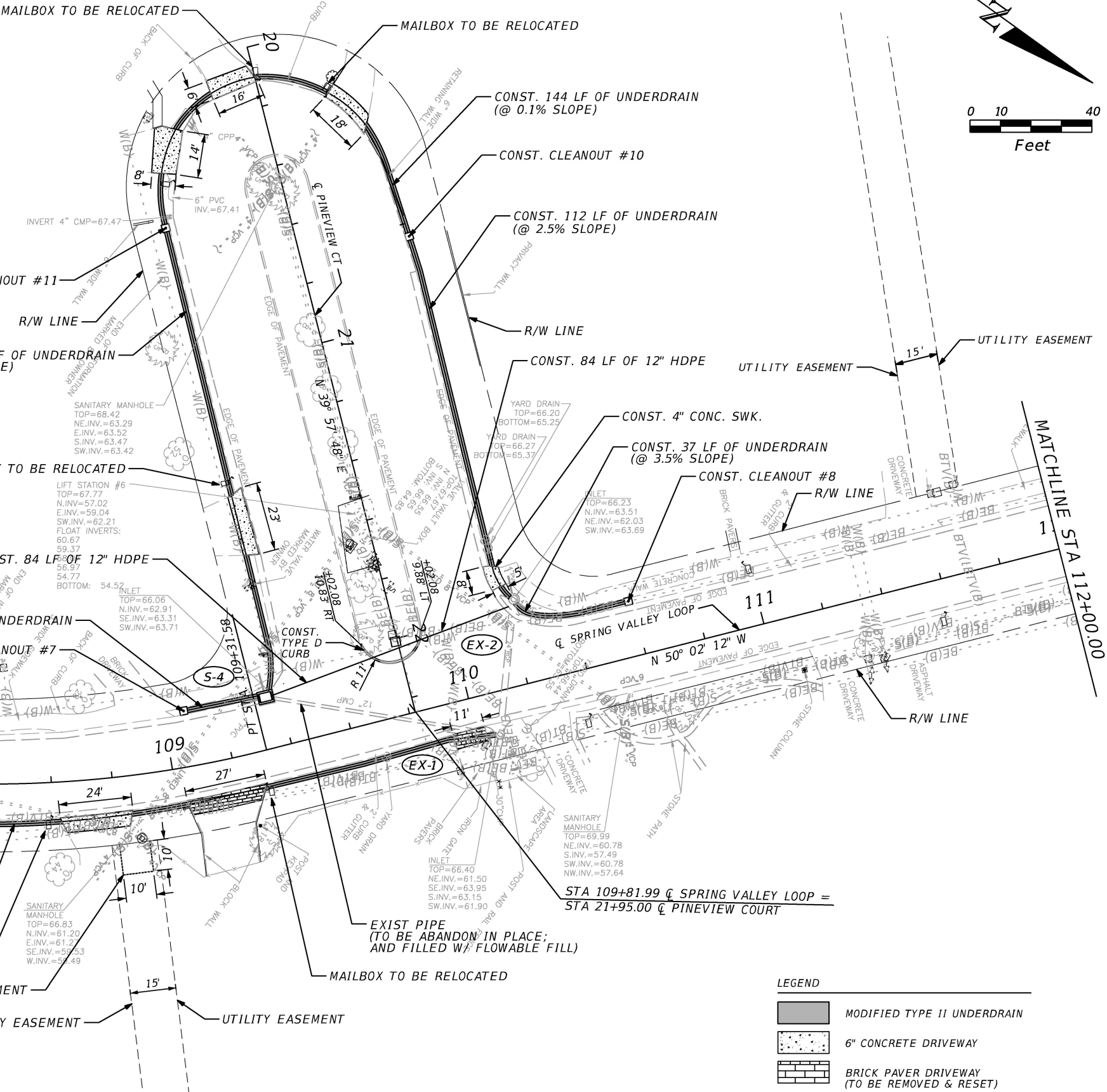
1/20/20221:27:38 PM

T:\Engineering\Projects\_CIP\02107073\_Spring Valley Farms Underdrain\3. DESIGN\CADD



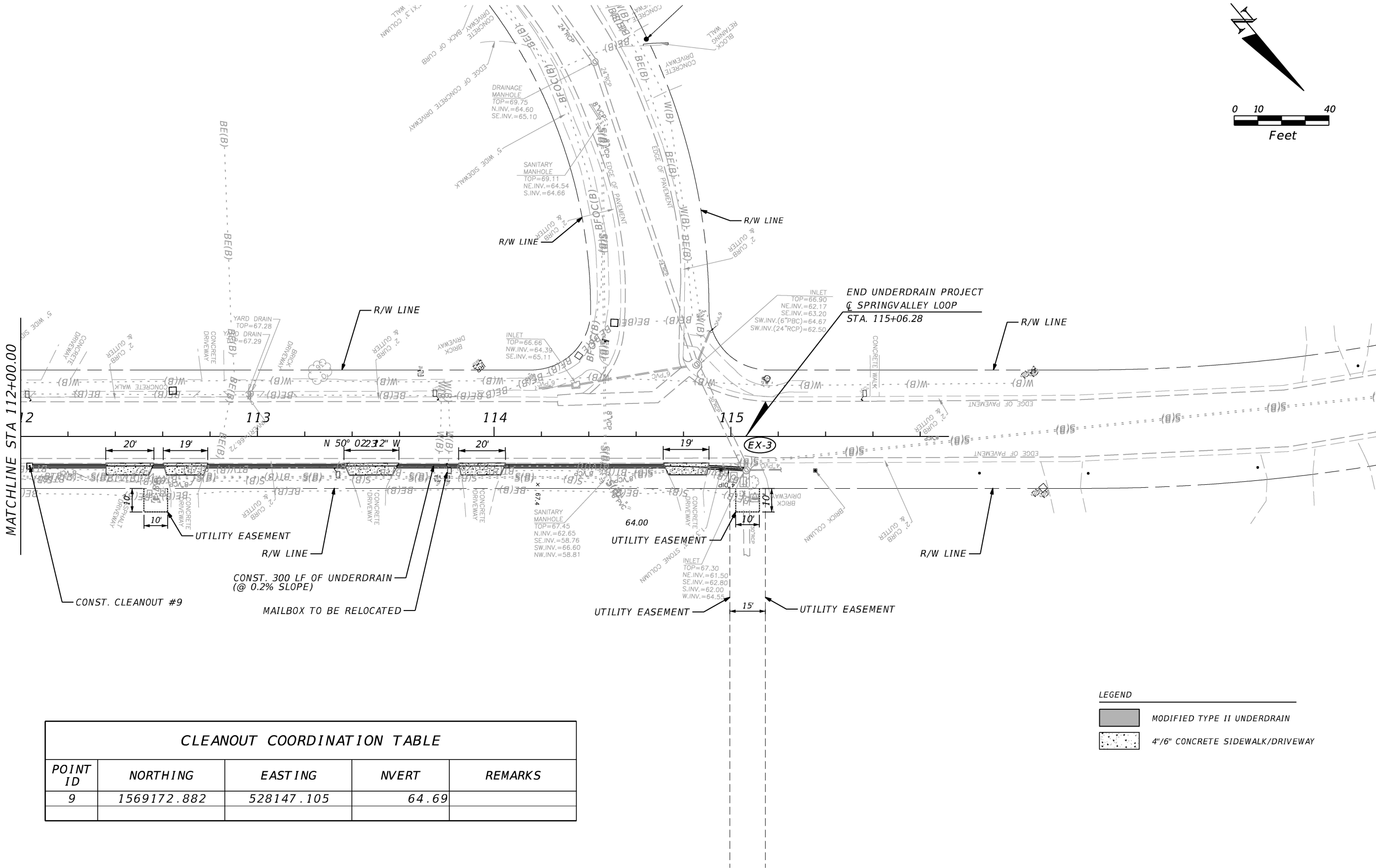
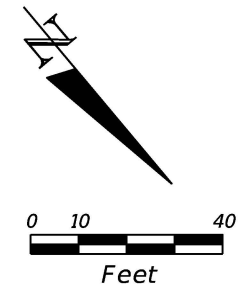


CLEANOUT COORDINATION TABLE				
POINT ID	NORTHING	EASTING	NVERT	REMARKS
6	1568869.050	528455.719	64.69	
7	1568958.853	528353.341	64.48	
8	1569056.197	528238.686	64.62	
10	1568927.777	528183.782	65.65	
11	1568861.431	528228.357	65.77	



CURVE DATA CUR2-2  
PI STA. = 107+83.73  
Δ = 49° 54' 23" (LT)  
D = 15° 43' 24"  
T = 169.56  
L = 317.40  
R = 364.40  
PC STA. = 106+14.17  
PT STA. = 109+31.58

REVISIONS				 <b>SEMINOLE COUNTY</b> <u><b>ENGINEERING DIVISION</b></u>  DINO E. LUCARELLI P.E. No. 39556 100 East 1st. Street Sanford, FL 32771	<b>SEMINOLE COUNTY</b> <b>ENGINEERING DIVISION</b>		<b>PLAN SHEET</b>	SHEET NO.
DATE	DESCRIPTION	DATE	DESCRIPTION		ROAD	COUNTY CIP No.		8
					SPRING VALLEY LOOP	02107073		



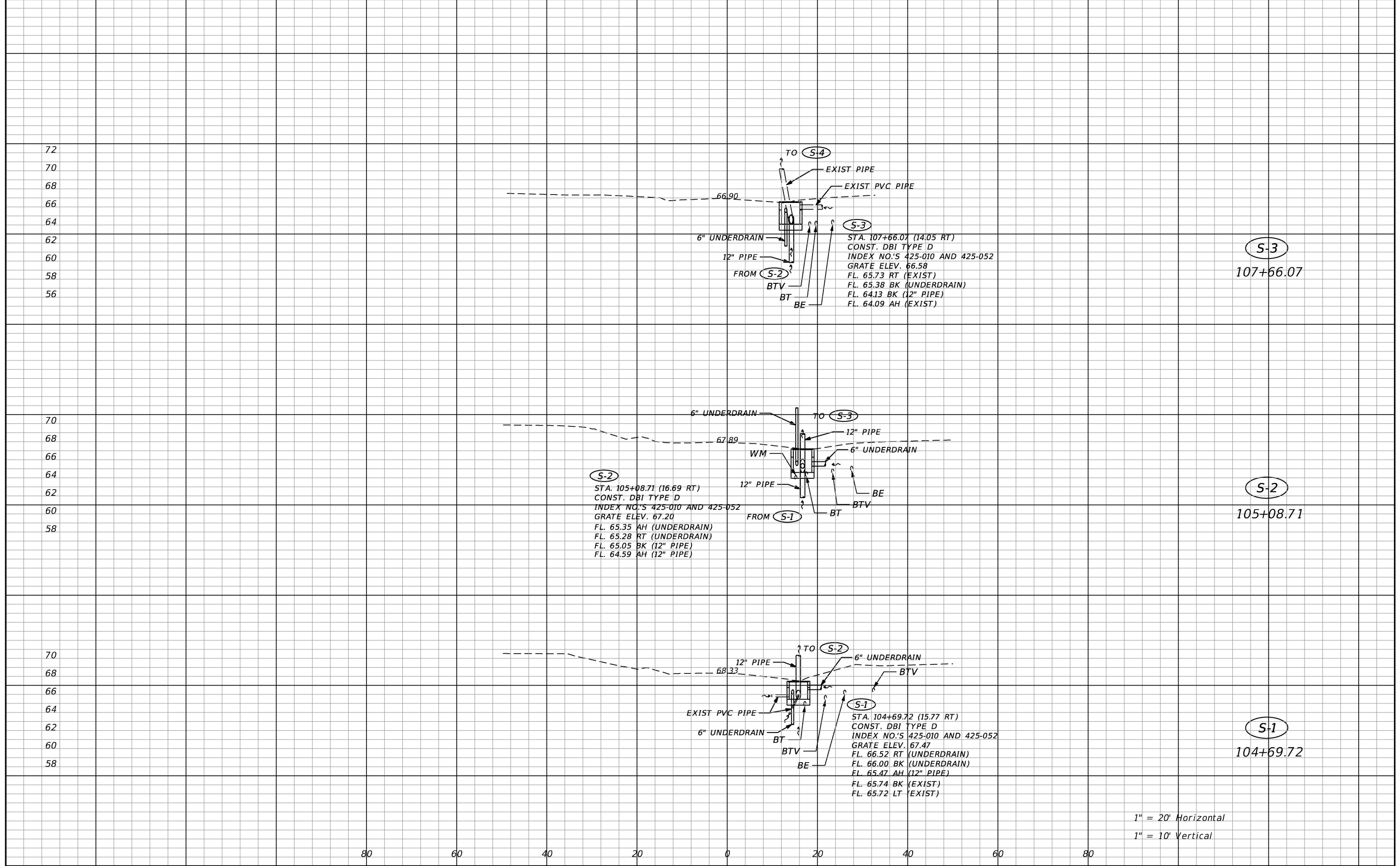
CLEANOUT COORDINATION TABLE

POINT ID	NORTHING	EASTING	NVERT	REMARKS
9	1569172.882	528147.105	64.69	

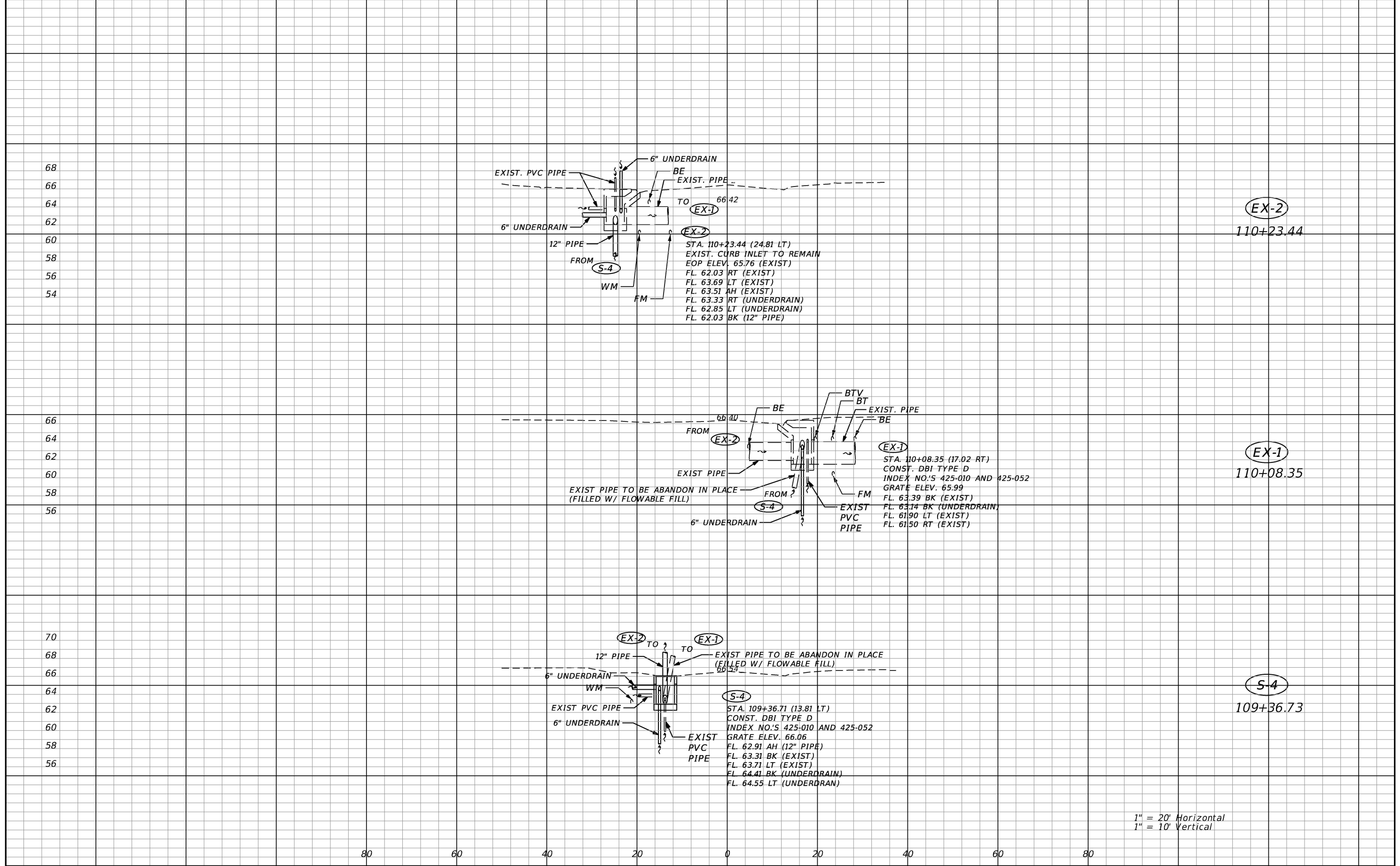
LEGEND	
	MODIFIED TYPE II UNDERDRAIN
	4"/6" CONCRETE SIDEWALK/DRIVEWAY

REVISIONS				 <b>SEMINOLE COUNTY ENGINEERING DIVISION</b>  DINO E. LUCARELLI P.E. No. 39556 100 East 1st. Street Sanford, FL 32771	<b>SEMINOLE COUNTY ENGINEERING DIVISION</b>		<b>PLAN SHEET</b>	SHEET NO.
DATE	DESCRIPTION	DATE	DESCRIPTION		ROAD	COUNTY CIP No.		9
					SPRING VALLEY LOOP	02107073		



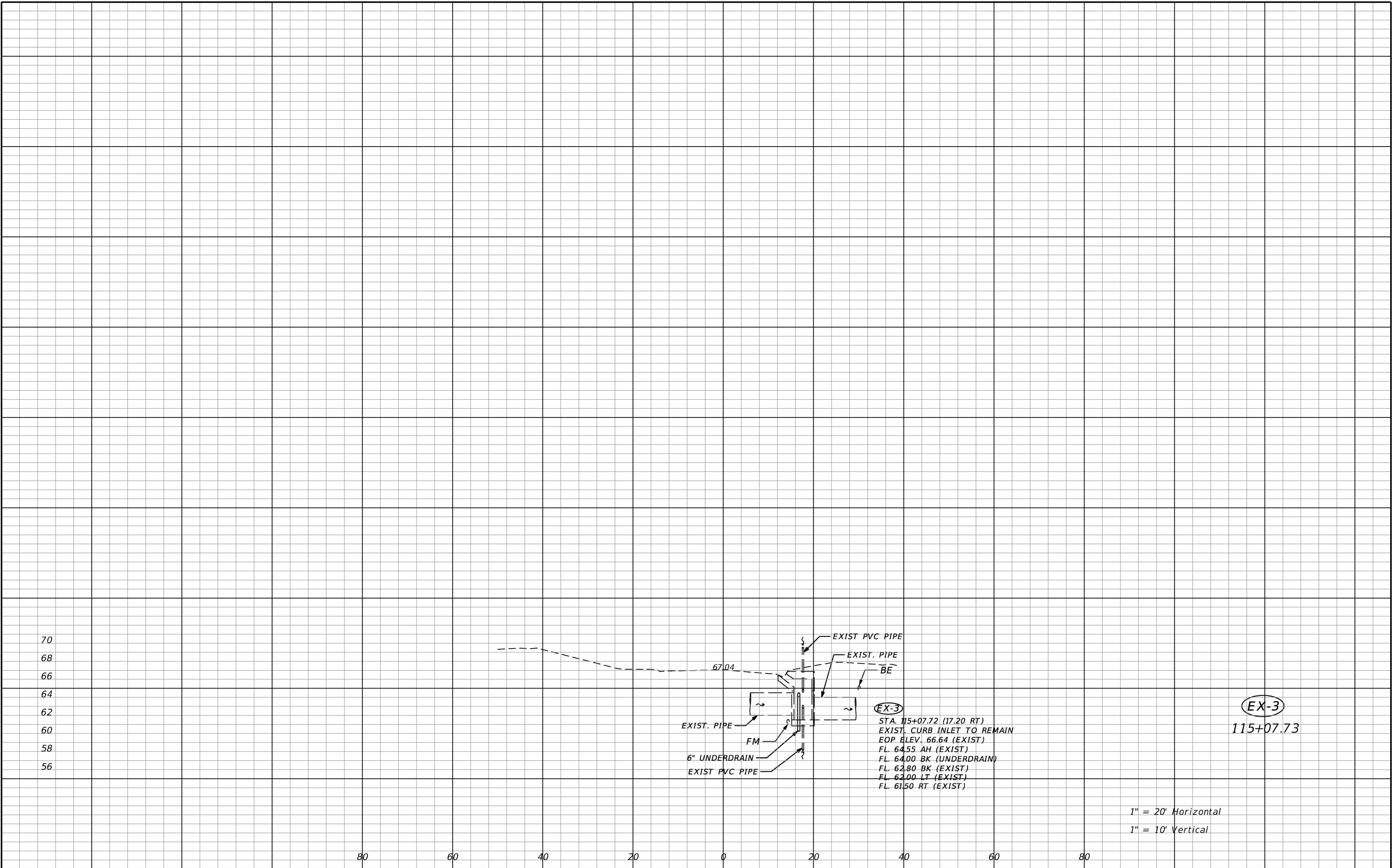



REVISIONS				 <b>SEMINOLE COUNTY</b> <i>FLORIDA'S NATURAL CHOICE</i>	<b>SEMINOLE COUNTY</b> <u><b>ENGINEERING DIVISION</b></u> DINO E. LUCARELLI P.E. No. 39556 100 East 1st. Street Sanford, FL 32771	<b>SEMINOLE COUNTY</b> <b>ENGINEERING DIVISION</b>		<i><b>DRAINAGE STRUCTURES</b></i>	SHEET NO.
DATE	DESCRIPTION	DATE	DESCRIPTION			ROAD	COUNTY CIP No.		10
						SPRING VALLEY LOOP	02107073		

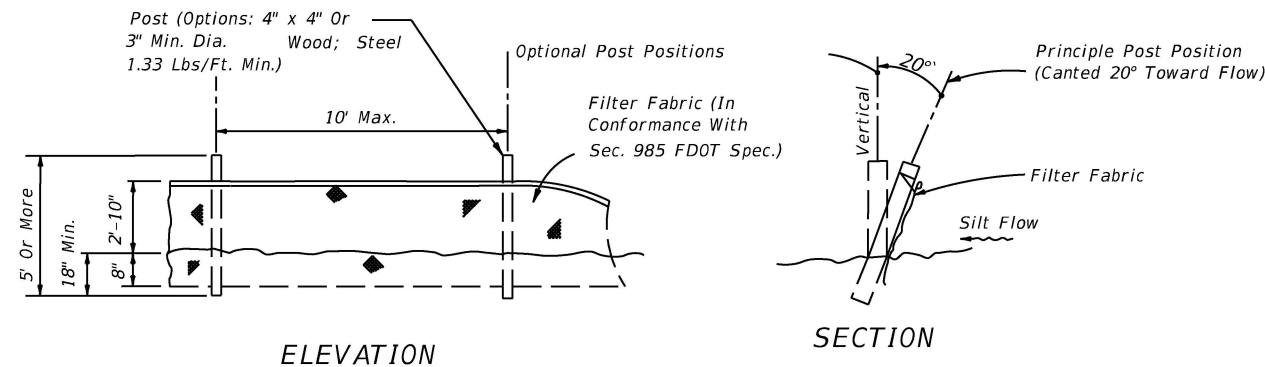


1" = 20' Horizontal  
1" = 10' Vertical

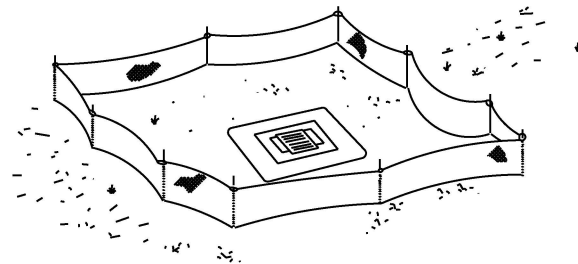
REVISIONS				 <b>SEMINOLE COUNTY</b> <i>FLORIDA'S NATURAL CHOICE</i>	<b>SEMINOLE COUNTY</b> <b>ENGINEERING DIVISION</b>		<b>SEMINOLE COUNTY</b> <b>ENGINEERING DIVISION</b>	<i>DRAINAGE STRUCTURES</i>	SHEET NO.
DATE	DESCRIPTION	DATE	DESCRIPTION		ROAD	COUNTY CIP No.			11
					SPRING VALLEY LOOP	02107073			



REVISIONS				<div><p><b>SEMINOLE COUNTY</b> <b>ENGINEERING DIVISION</b></p><p>DINO E. LUCARELLI P.E. No. 39556 100 East 1st. Street Sanford, FL 32771</p></div>	<b>SEMINOLE COUNTY</b> <b>ENGINEERING DIVISION</b>		<b>DRAINAGE STRUCTURES</b>	SHEET NO.
DATE	DESCRIPTION	DATE	DESCRIPTION					12



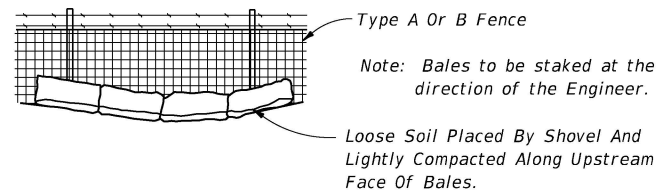
TYPE IV SILT FENCE



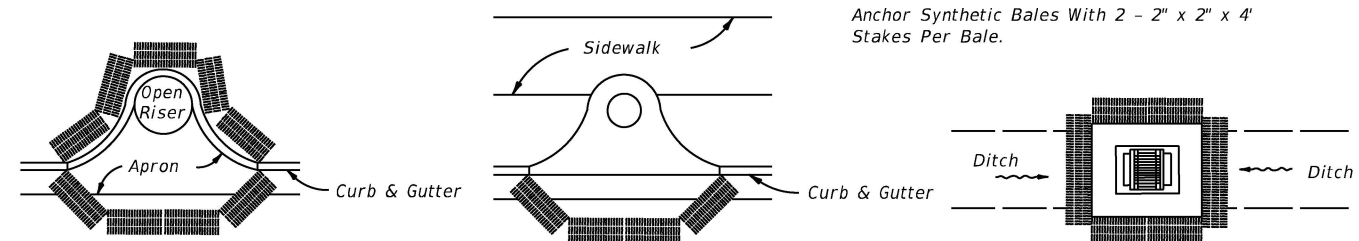
Type IV Silt Fence Protection  
Around Ditch Bottom Inlets.

Do not deploy in a manner that silt fences will act as a dam across permanent flowing watercourses. Silt fences are to be used at upland locations and turbidity barriers used at permanent bodies of water.

SILT FENCE APPLICATIONS



1. THE CONTRACTOR SHALL EXECUTE ALL MEASURES NECESSARY TO LIMIT THE TRANSPORT OF SEDIMENTS OUTSIDE THE LIMITS OF THE PROJECT TO THE VOLUME AND AMOUNT THAT ARE EXISTING PRIOR TO THE COMMENCEMENT OF CONSTRUCTION. THIS CONDITION WILL BE SATISFIED FOR THE TOTAL ANTICIPATED CONSTRUCTION PERIOD. PROVISION MUST BE MADE TO PRESERVE THE INTEGRITY AND CAPACITY OF CHECK WEIRS, SEDIMENT BASINS, SLOPE DRAINS, GRADING PATTERNS, ETC. REQUIRED TO MEET THIS PROVISION THROUGHOUT THE LIFE OF THE CONSTRUCTION. THE CONTRACTOR SHALL PROVIDE SYNTHETIC BALES, SILT BARRIERS, TEMPORARY GRASSING, ETC. AS REQUIRED TO FULLY COMPLY WITH THE INTENT OF THIS SPECIFICATION.
2. NO EXCAVATED MATERIAL SHALL BE STOCKPILED IN SUCH A MANNER AS TO DIRECT RUNOFF DIRECTLY OFF THE PROJECT SITE OR INTO ANY ADJACENT WATER BODY OR STORMWATER COLLECTION FACILITY.
3. THE SURFACE AREA OF OPEN, RAW ERODIBLE SOIL EXPOSED BY CLEARING AND GRUBBING OPERATIONS OR EXCAVATION AND FILLING OPERATIONS SHALL BE CONTROLLED, SO THAT THIS OPERATION WILL NOT SIGNIFICANTLY AFFECT OFF-SITE DEPOSIT OF SEDIMENTS.
4. INLETS AND CATCH BASINS SHALL BE PROTECTED FROM SEDIMENT LADEN STORMWATER RUNOFF UNTIL THE COMPLETION OF ALL CONSTRUCTION OPERATIONS THAT MAY CONTRIBUTE SEDIMENT TO THE INLET. (SEE NOTE 16).
5. AREAS OPENED BY CONSTRUCTION OPERATIONS THAT ARE NOT ANTICIPATED TO BE DRESSED OR RECEIVE FINAL GRASSING TREATMENT WITHIN THIRTY DAYS SHALL BE SEEDED WITH A QUICK GROWING GRASS SPECIES WHICH WILL PROVIDE AN EARLY COVER, DURING THE SEASON IN WHICH IT IS PLANTED. TEMPORARY SEEDING SHALL BE CONTROLLED SO AS TO NOT ALTER OR COMPETE WITH PERMANENT GRASSING. THE RATE OF SEEDING SHALL BE 30 POUNDS PER ACRE.
6. THE SEEDED OR SEEDED AND MULCHED AREA(S) SHALL BE ROLLED AND WATERED AS REQUIRED TO ASSURE OPTIMUM GROWING CONDITIONS FOR THE ESTABLISHMENT OF A GOOD GRASS COVER.
7. IF AFTER 14 DAYS, THE TEMPORARY GRASSES AREAS HAVE NOT ATTAINED A MINIMUM OF 75% GOOD GRASS COVER, THE AREA WILL BE REWORKED AND ADDITIONAL SEED APPLIED TO ESTABLISH THE DESIRED VEGETATION COVER.
8. ALL FEATURES OF THE PROJECT SHALL BE CONSTRUCTED TO PREVENT EROSION AND SEDIMENT AND SHALL BE MAINTAINED DURING THE LIFE OF THE CONSTRUCTION SO AS TO FUNCTION PROPERLY WITHOUT THE TRANSPORT OF SEDIMENTS OUTSIDE THE LIMITS OF THE PROJECT.
9. ALL DISTURBED AREAS OUTSIDE THE EXCAVATION AND FILL LIMITS WILL BE RESTORED TO A CONDITION EQUAL TO OR BETTER THAN THEIR CONDITION PRIOR TO CONSTRUCTION.
10. THE CONTRACTOR WILL BE RESPONSIBLE FOR MAINTENANCE OF ALL NEWLY PLANTED GRASSES OR VEGETATION AND RETENTION/DETENTION FACILITIES UNTIL THE WORK HAS BEEN ACCEPTED BY THE COUNTY.
11. THE CONTRACTOR SHALL BE RESPONSIBLE FOR THE STABILITY OF EMBANKMENTS AND SHALL REPLACE ANY PORTION, WHICH IN THE OPINION OF THE ENGINEER, HAS BECOME DISPLACED DUE TO EROSION OR DUE TO CARELESSNESS OR NEGLIGENCE ON THE PART OF THE CONTRACTOR.
12. THE CONTRACTOR SHALL COMPLY WITH ALL FEDERAL, STATE, AND LOCAL LAWS AND REGULATIONS CONTROLLING POLLUTION OF THE ENVIRONMENT. MEASURES SHALL BE TAKEN BY THE CONTRACTOR TO CONTROL EROSION AND SEDIMENT RUNOFF FROM THE SITE DURING CONSTRUCTION. SUCH METHODS SHALL BE IN ACCORDANCE WITH THE CURRENT FLORIDA DEPARTMENT OF TRANSPORTATION STANDARDS.
13. ABSOLUTELY NO WORK WILL BE ALLOWED WITHIN ANY CONSERVATION AREA, BUFFER AREA, MITIGATION AREA OR DESIGNATED WETLAND AREA UNLESS SO SPECIFICALLY DESCRIBED BY THE PLANS AND GRANTED BY REASON OF PERMIT FROM THE GOVERNMENTAL ENTITY HAVING JURISDICTION OVER SAID AREA.
14. PRIOR TO CLEARING AND GRUBBING, THE LIMITS OF WETLANDS, BUFFERS, AND MITIGATION AREAS SHALL BE CLEARLY MARKED ALONG THE PROPOSED RIGHT OF WAY LINE TO PROTECT THESE AREAS FROM ENCROACHMENT FROM CONSTRUCTION ACTIVITIES.
15. ALL FILL EMBANKMENT AND GRADED AREAS SHALL BE PROTECTED AGAINST EROSION BY METHODS STATED IN "SECTION 104," F.D.O.T. STANDARD SPECIFICATIONS FOR BRIDGE AND ROAD CONSTRUCTION. SIDE SLOPE MAY BE SEEDED AND MULCHED, PROVIDED THAT THE MULCH MATERIAL IS DISC HARROWED AND THE SIDE SLOPES ARE NEITHER GREATER THAN 4:1 NOR PART OF A DRAINAGE CONVEYANCE.
16. EROSION CONTROL AT ALL INLET DRAINAGE STRUCTURES DURING CONSTRUCTION SHALL BE DONE IN ACCORDANCE WITH SECTION 104 PREVENTION, CONTROL AND ABATEMENT OF EROSION AND WATER POLLUTION.




PARTIAL INLET

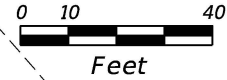
COMPLETED INLET

DITCH BOTTOM INLET

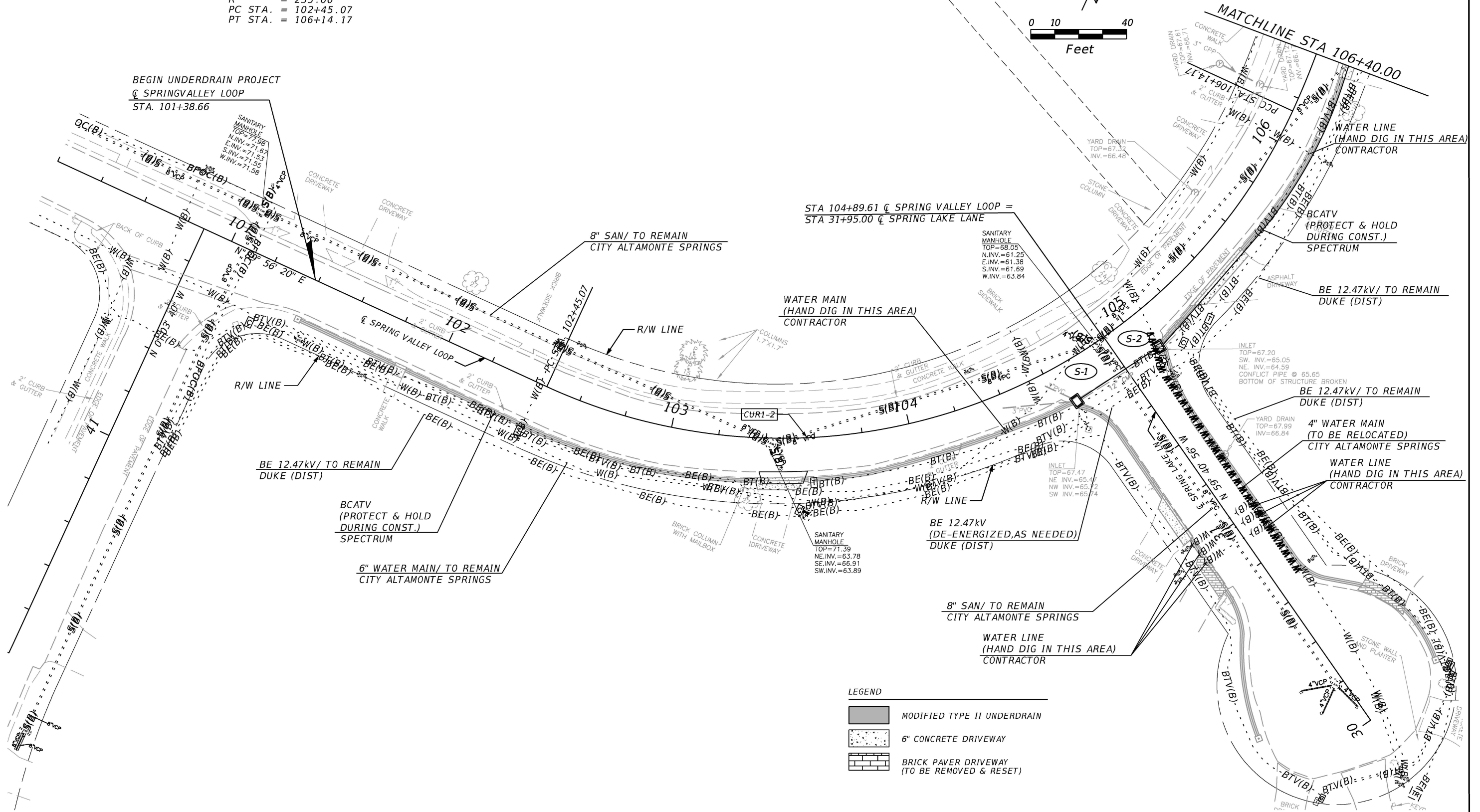
PROTECTION AROUND INLETS OR SIMILAR STRUCTURES

REVISIONS				 <b>SEMINOLE COUNTY</b> <u><b>ENGINEERING DIVISION</b></u>  DINO E. LUCARELLI P.E. No. 39556 100 East 1st. Street Sanford, FL 32771	<b>SEMINOLE COUNTY</b> <b>ENGINEERING DIVISION</b>		<b>EROSION CONTROL PLAN</b>	SHEET NO.
DATE	DESCRIPTION	DATE	DESCRIPTION		ROAD	COUNTY CIP No.		13
					SPRING VALLEY LOOP	02107073		

CURVE DATA CUR1-2  
PI STA. = 104+80.03  
Δ = 89° 59' 33" (LT)  
D = 24° 22' 52"  
T = 234.97  
L = 369.11  
R = 235.00  
PC STA. = 102+45.07  
PT STA. = 106+14.17




BEGIN UNDERDRAIN PROJECT  
@ SPRINGVALLEY LOOP  
STA. 101+38.66



LEGEND

- MODIFIED TYPE II UNDERDRAIN
- 6" CONCRETE DRIVEWAY
- BRICK PAVER DRIVEWAY (TO BE REMOVED & RESET)

REVISIONS			
DATE	DESCRIPTION	DATE	DESCRIPTION

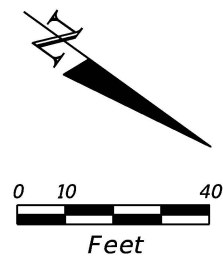


**SEMINOLE COUNTY  
ENGINEERING DIVISION**  
DINO E. LUCARELLI  
P.E. No. 39556  
100 East 1st. Street  
Sanford, FL 32771

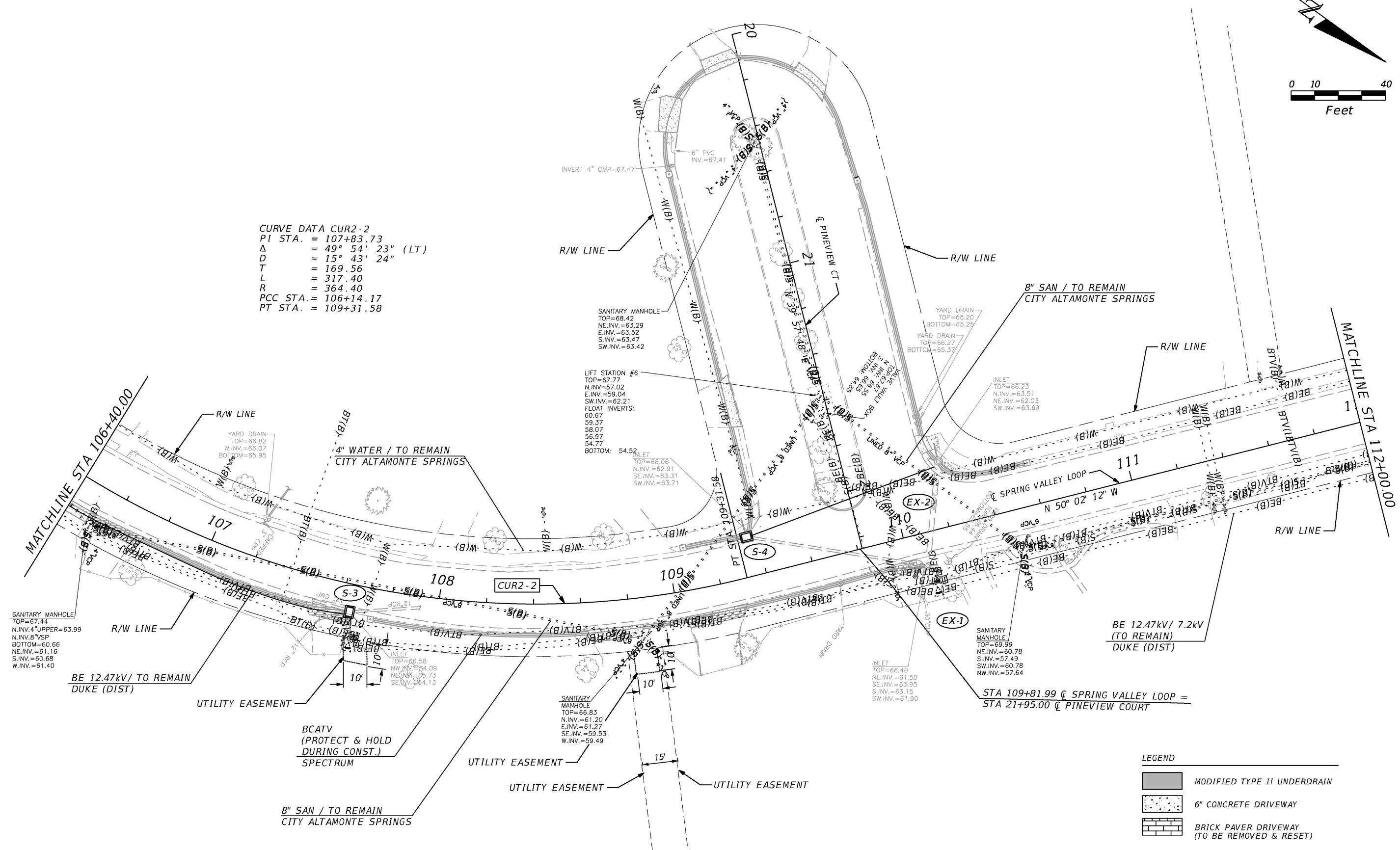
SEMINOLE COUNTY ENGINEERING DIVISION	
ROAD	COUNTY CIP No.
SPRING VALLEY LOOP	02107073

**UTILITY ADJUSTMENT SHEET**

SHEET NO.  
14




CURVE DATA CUR2-2  
PI STA. = 107+83.73  
 $\Delta$  = 49° 54' 23" (LT)  
D = 15° 43' 24"  
T = 169.56  
L = 317.40  
R = 364.40  
PCC STA. = 106+14.17  
PT STA. = 109+31.58



- LEGEND
- MODIFIED TYPE II UNDERDRAIN
  - 6" CONCRETE DRIVEWAY
  - BRICK PAVER DRIVEWAY (TO BE REMOVED & RESET)

REVISIONS			
DATE	DESCRIPTION	DATE	DESCRIPTION

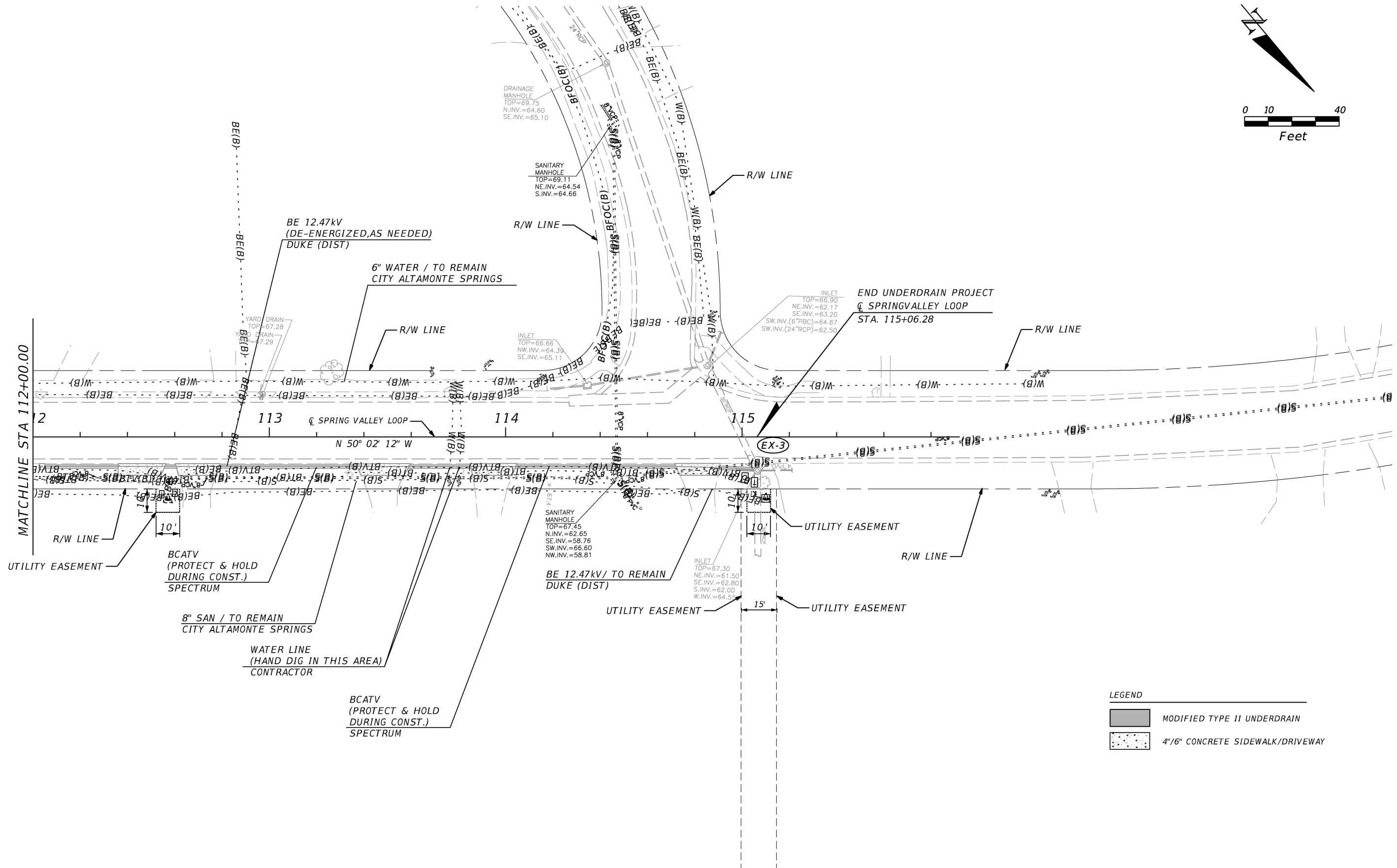
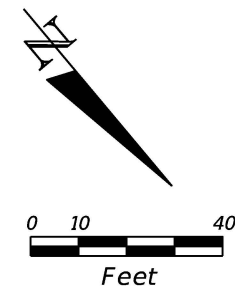


**SEMINOLE COUNTY  
ENGINEERING DIVISION**  
DINO E. LUCARELLI  
P.E. No. 39556  
100 East 1st. Street  
Sanford, FL 32771


SEMINOLE COUNTY ENGINEERING DIVISION	
ROAD	COUNTY CIP No.
SPRING VALLEY LOOP	02107073

**UTILITY ADJUSTMENT SHEET**

SHEET NO.
15




LEGEND	
	MODIFIED TYPE II UNDERDRAIN
	4\"/>

REVISIONS				 <b>SEMINOLE COUNTY ENGINEERING DIVISION</b>  DINO E. LUCARELLI P.E. No. 39556 100 East 1st. Street Sanford, Fl 32771	<b>SEMINOLE COUNTY ENGINEERING DIVISION</b>		<b>UTILITY ADJUSTMENT SHEET</b>	SHEET NO.
DATE	DESCRIPTION	DATE	DESCRIPTION		ROAD	COUNTY CIP No.		16
					SPRING VALLEY LOOP	02107073		



SUMMARY OF EROSION AND SEDIMENT CONTROL DEVICES									
LOCATION		SIDE	AREA ID	STAKED SILT FENCE (TYPE III)		INLET PROTECTION SYSTEM		DESIGN NOTES	CONSTRUCTION REMARKS
STA. TO STA.				0104 13 1		0104 18			
				LF		EA			
				P	F	P	F		
20+09.65 to 20+21.77		LT/RT		28.9				PINEVIEW CIRCLE	
20+10.76 to 20+21.45		RT		20.7				PINEVIEW CIRCLE	
20+34.65 to 20+55.83		LT		21.8				PINEVIEW CIRCLE	
20+35.16 to 20+51.27		RT		16.5				PINEVIEW CIRCLE	
20+51.27 to 21+44.97		RT		93.7				PINEVIEW CIRCLE	
20+55.83 to 20+87.11		LT		31.3				PINEVIEW CIRCLE	
20+87.11 to 21+89.02		LT		101.9				PINEVIEW CIRCLE	
21+64.35 to 21+99.63		RT		35.3				PINEVIEW CIRCLE	
30+06.31 to 30+32.09		RT		26.0				SPRING LAKE LANE	
30+23.31 to 30+62.01		LT		43.3				SPRING LAKE LANE	
30+50.35 to 30+61.36		RT		15.5				SPRING LAKE LANE	
30+61.36 to 30+69.98		RT		9.9				SPRING LAKE LANE	
30+61.89 to 30+78.63		LT		17.7				SPRING LAKE LANE	
30+69.98 to 30+76.03		RT		6.1				SPRING LAKE LANE	
30+76.15 to 31+46.05		RT		69.9				SPRING LAKE LANE	
30+95.64 to 31+05.27		LT		9.6				SPRING LAKE LANE	
31+23.99 to 31+61.99		LT		38.0				SPRING LAKE LANE	
31+46.09 to 31+76.83		RT		31.5				SPRING LAKE LANE	
31+61.98 to 31+77.65		LT		19.5				SPRING LAKE LANE	
31+76.83 to 31+82.44		RT		22.9				SPRING LAKE LANE	
101+38.47 to 101+84.66		RT		46.2				SPRING VALLEY LOOP	
101+89.55 to 102+45.07		RT		55.5				SPRING VALLEY LOOP	
102+45.07 to 103+38.59		RT		101.2				SPRING VALLEY LOOP	
103+55.70 to 104+62.50		RT		115.4				SPRING VALLEY LOOP	
104+69.65		RT				2.0		SPRING VALLEY LOOP	
105+08.55		RT				2.0		SPRING VALLEY LOOP	
105+58.18 to 106+38.03		RT		85.5				SPRING VALLEY LOOP	
106+74.31 to 107+50.30		RT		79.8				SPRING VALLEY LOOP	
107+66.39		RT				1.0		SPRING VALLEY LOOP	
107+66.52 to 108+65.92		RT		104.7				SPRING VALLEY LOOP	
108+85.79 to 109+05.76		RT		21.0				SPRING VALLEY LOOP	
109+07.81 to 109+25.12		LT		16.3				SPRING VALLEY LOOP	
109+25.12 to 109+38.50		LT		13.3				SPRING VALLEY LOOP	
109+27.47 to 109+62.60		RT		35.3				SPRING VALLEY LOOP	
109+36.15		LT				2.0		SPRING VALLEY LOOP	
109+62.60 to 109+93.50		RT		30.9				SPRING VALLEY LOOP	
110+04.01 to 110+18.28		RT		14.3				SPRING VALLEY LOOP	
110+08.35		RT				1.0		SPRING VALLEY LOOP	
110+23.45		LT				1.0		SPRING VALLEY LOOP	
110+31.75 to 111+14.44		RT		82.7				SPRING VALLEY LOOP	
110+44.45 to 110+58.64		LT		14.2				SPRING VALLEY LOOP	
111+55.64 to 112+37.25		RT		81.6				SPRING VALLEY LOOP	
112+78.48 to 113+40.07		RT		61.6				SPRING VALLEY LOOP	
113+58.36 to 113+87.24		RT		28.9				SPRING VALLEY LOOP	
114+04.05 to 114+74.81		RT		70.8				SPRING VALLEY LOOP	
114+91.37 to 115+06.11		RT		14.8				SPRING VALLEY LOOP	
115+07.73		RT				1.0		SPRING VALLEY LOOP	
SUB-TOTAL:				1734.0		10.0			
TOTAL:				1734		10			

REVISIONS				 SEMINOLE COUNTY FLORIDA'S NATURAL CHOICE	SEMINOLE COUNTY ENGINEERING DIVISION DINO E. LUCARELLI P.E. No. 39556 100 East 1st. Street Sanford, FL 32771	SEMINOLE COUNTY ENGINEERING DIVISION		SUMMARY OF QUANTITIES	SHEET NO.
DATE	DESCRIPTION	DATE	DESCRIPTION			ROAD	COUNTY CIP No.		SQ-1
						SPRING VALLEY LOOP	02107073		

hmcknight

1/20/2022 1:27:55 PM

T:\Engineering\Projects\_CIP\02107073\_Spring Valley Farms Underdrain\3. DESIGN\CAD

SUMMARY OF CLEARING AND GRUBBING & REMOVAL ITEMS												
PAY ITEM NO.	PAY ITEM DESCRIPTION	LOCATION	SIDE	AREA ID	UNITS	SECONDARY UNITS (IF LUMP SUM)	QUANTITY		TOTAL		DESIGN NOTES	CONSTRUCTION REMARKS
		STA. TO STA.				AREA (AC)	P	F	P	F		
0110 4 10	REMOVAL OF EXISTING CONCRETE	101+84.57 to 101+89.61	RT		SY		2.7				SPRING VALLEY LOOP	
		103+37.77 to 103+56.91	RT		SY		10.4				SPRING VALLEY LOOP	
		31+05.59 to 31+27.35	LT		SY		11.3				SPRING LAKE LANE	
		105+27.81 to 105+58.59	RT		SY		16.4				SPRING VALLEY LOOP	
		106+37.45 to 106+52.21	RT		SY		8.4				SPRING VALLEY LOOP	
		108+63.91 to 108+87.00	RT		SY		12.5				SPRING VALLEY LOOP	
		20+14.65 to 20+17.00	RT		SY		10.3				PINEVIEW CIRCLE	
		20+24.53 to 20+37.78	RT		SY		14.4				PINEVIEW CIRCLE	
		20+25.17 to 20+40.04	LT		SY		9.2				PINEVIEW CIRCLE	
		21+42.56 to 21+65.24	RT		SY		11.7				PINEVIEW CIRCLE	
		21+87.32 to 21+95.64	LT		SY		4.1				PINEVIEW CIRCLE	
		22+02.08 to 22+02.08	LT/RT		SY		1.7				PINEVIEW CIRCLE	
		112+37.21 to 112+57.53	RT		SY		10.7				SPRING VALLEY LOOP	
		112+61.49 to 112+80.28	RT		SY		9.6				SPRING VALLEY LOOP	
		113+37.82 to 113+61.01	RT		SY		11.5				SPRING VALLEY LOOP	
		113+86.23 to 114+05.99	RT		SY		10.2				SPRING VALLEY LOOP	
		114+72.66 to 114+92.00	RT		SY		9.8				SPRING VALLEY LOOP	
		TOTAL :					165					

REVISIONS				 <div>SEMINOLE COUNTY ENGINEERING DIVISION DINO E. LUCARELLI P.E. No. 39556 100 East 1st. Street Sanford, FL 32771</div>	SEMINOLE COUNTY ENGINEERING DIVISION		SUMMARY OF QUANTITIES	SHEET NO.
DATE	DESCRIPTION	DATE	DESCRIPTION		ROAD	COUNTY CIP No.		
					SPRING VALLEY LOOP	02107073		SQ-2

SUMMARY OF UNDERDRAIN							
LOCATION	SIDE	UNDERDRAIN TYPE I		CLEANOUT		DESIGN NOTES	CONSTRUCTION REMARKS
		0440	1 10	0440	1 10		
STA. TO STA.		(LF)		(EA)			
		P	F	P	F		
20+13.14 to 20+52.82	RT	63.0					
20+54.07	RT			1.0			
20+55.32 to 22+09.79	RT	155.1					
20+13.14 to 20+75.04	LT	80.8					
20+76.29	LT			1.0			
20+77.54 to 21+99.04	LT	121.1					
30+05.64	RT			1.0			
30+06.87 to 31+76.41	RT	178.4					
30+21.12	LT			1.0			
30+22.34 to 31+78.20	LT	162.0					
101+39.72	RT			1.0			
101+40.97 to 103+58.83	RT	225.5					
103+60.00	RT			1.0			
103+61.19 to 104+68.35	RT	112.9					
105+09.66 to 106+11.83	RT	108.5					
106+13.01	RT			1.0			
106+14.17 to 107+64.72	RT	156.6					
107+75.03	RT			1.0			
107+76.22 to 110+06.94	RT	237.5					
109+08.53	LT			1.0			
109+09.93 to 109+34.19	LT	23.5					
110+23.84 to 110+58.65	LT	37.4					
110+59.91	LT			1.0			
112+05.05	RT			1.0			
112+06.30 to 115+06.30	RT	300.0					
SUB-TOTAL :		1962.2		11.0			
TOTAL :		1962		11			

REVISIONS				 <b>SEMINOLE COUNTY</b> <b>ENGINEERING DIVISION</b>  DINO E. LUCARELLI P.E. No. 39556 100 East 1st. Street Sanford, FL 32771	<b>SEMINOLE COUNTY</b> <b>ENGINEERING DIVISION</b>		<b>SUMMARY OF QUANTITIES</b>	SHEET NO.
DATE	DESCRIPTION	DATE	DESCRIPTION		ROAD	COUNTY CIP No.		SQ-3
					SPRING VALLEY LOOP	02107073		

SUMMARY OF CURB & GUTTER AND/OR TRAFFIC SEPARATORS														
PAY ITEM NO.	PAY ITEM DESCRIPTION	LOCATION	SIDE	AREA ID	UNIT	QUANTITY					TOTAL		DESIGN NOTES	CONSTRUCTION REMARKS
		STA. TO STA.				GROSS LENGTH	DEDUCTIONS		NET LENGTH					
									TYPE	LENGTH	P	F		
0520 2 4	CONCRETE CURB, TYPE D	109+71.59 to 109+91.37	LT		LF	27.7				27.7		28		

SUMMARY OF SIDEWALK & DETECTABLE WARNINGS										
LOCATION	SIDE	AREA ID	LENGTH	WIDTH	SIDEWALK (CONC.) (4" THK.)		SIDEWALK (CONC.) (6" THK.)		DESIGN NOTES	CONSTRUCTION REMARKS
					0522 1		0522 2			
SY					SY					
P					F	P	F			
101+84.57 to 101+89.61	RT	7390			2.7					
103+37.77 to 103+56.91	RT	7883					10.4			
30+28.95 to 30+48.37	RT						11.4		BRICK PAVERS	
30+79.68 to 31+00.03	LT						10.4		BRICK PAVERS	
31+05.08 to 31+27.35	LT	7893					11.3			
105+27.81 to 105+58.59	RT	8227					16.4			
106+37.45 to 106+52.33	RT	8234					8.4			
106+54.12 to 106+76.73	RT						11.9		BRICK PAVERS	
107+48.50 to 107+64.10	RT						9.4		BRICK PAVERS	
108+63.91 to 108+87.00	RT	8312					12.5			
109+04.50 to 109+30.16	RT						13.7		BRICK PAVERS	
109+93.38 to 110+04.11	RT						5.9		BRICK PAVERS	
20+14.65 to 20+17.00	LT/RT	8330					10.3			
20+21.36 to 20+37.78	RT	8304					14.4			
20+25.17 to 20+40.04	LT	8337					9.2			
21+42.56 to 21+65.24	RT	8290					11.7			
21+87.31 to 21+95.64	LT	7385			4.1					
112+37.21 to 112+57.53	RT	8391					10.7			
112+61.49 to 112+80.28	RT	8396					9.6			
113+37.82 to 113+61.01	RT	8411					11.5			
113+86.23 to 114+05.99	RT	8416					10.2			
114+72.66 to 114+92.00	RT	8425					9.8			
SUB-TOTAL :					6.8		219.1			
TOTAL :					7		219			

REVISIONS				 <div>SEMINOLE COUNTY ENGINEERING DIVISION DINO E. LUCARELLI P.E. No. 39556 100 East 1st. Street Sanford, FL 32771</div>	SEMINOLE COUNTY ENGINEERING DIVISION		SUMMARY OF QUANTITIES	SHEET NO.
DATE	DESCRIPTION	DATE	DESCRIPTION		ROAD	COUNTY CIP No.		
					SPRING VALLEY LOOP	02107073		SQ-4

SUMMARY OF PERFORMANCE TURF								
LOCATION	SIDE	AREA ID	LENGTH	WIDTH	PERFORMANCE TURF (SOD)		DESIGN NOTES	CONSTRUCTION REMARKS
					0570	1 2		
SY								
P					F			
STA. TO STA.								
20+11.95 to 20+24.95	LT	9331			6.9			
20+13.67 to 20+24.03	RT	9326			4.6			
20+35.93 to 20+52.83	RT	9318			4.7			
20+36.03 to 20+75.12	LT	9338			10.6			
20+55.31 to 21+44.60	RT	9312			24.7			
20+77.46 to 21+88.36	LT	9345			30.7			
21+64.25 to 22+09.19	RT	9303			12.5			
30+06.56 to 30+31.38	RT	9223			6.6			
30+22.03 to 30+79.68	LT	9213			17.4			
30+48.61 to 31+75.88	RT	9230			37.0			
30+98.13 to 31+05.61	LT	9208			1.7			
31+25.96 to 31+77.59	LT	9200			14.6			
101+40.97 to 101+84.65	RT	9167			11.8			
101+89.56 to 103+38.48	RT	9173			42.8			
103+55.93 to 103+58.83	RT	9182			0.7			
103+61.17 to 104+67.91	RT	9187			31.5			
105+10.90 to 105+30.47	RT				5.4			
105+58.59 to 106+11.84	RT				12.8			
106+14.18 to 106+37.45	RT				6.8			
106+52.21 to 106+54.92	RT				0.7			
106+75.57 to 107+49.15	RT				20.0			
107+76.20 to 108+64.92	RT	9285			25.6			
108+86.37 to 109+05.12	RT	9292			5.2			
109+09.82 to 109+34.21	LT	9297			6.4			
109+28.87 to 109+93.45	RT	9373			17.8			
110+04.02 to 110+07.28	RT	9383			0.8			
110+19.23 to 110+23.33	LT	9354			1.1			
110+23.37 to 110+58.67	LT	9359			9.2			
112+06.30 to 112+37.21	RT				8.6			
112+56.48 to 112+62.15	RT	9414			1.3			
112+84.73 to 113+38.92	RT	9424			16.1			
113+59.65 to 113+86.73	RT	9429			7.2			
114+05.01 to 114+73.84	RT	9434			19.1			
114+91.38 to 115+06.36	RT	9440			3.9			
SUB-TOTAL :					469.2			
TOTAL :					469			

REVISIONS				 <div>SEMINOLE COUNTY ENGINEERING DIVISION DINO E. LUCARELLI P.E. No. 39556 100 East 1st. Street Sanford, FL 32771</div>	SEMINOLE COUNTY ENGINEERING DIVISION		SUMMARY OF QUANTITIES	SHEET NO.
DATE	DESCRIPTION	DATE	DESCRIPTION		ROAD	COUNTY CIP No.		
					SPRING VALLEY LOOP	02107073		SQ-5