

Harmony Homes Subdivision Sidewalk Project

CIP No. 02107062

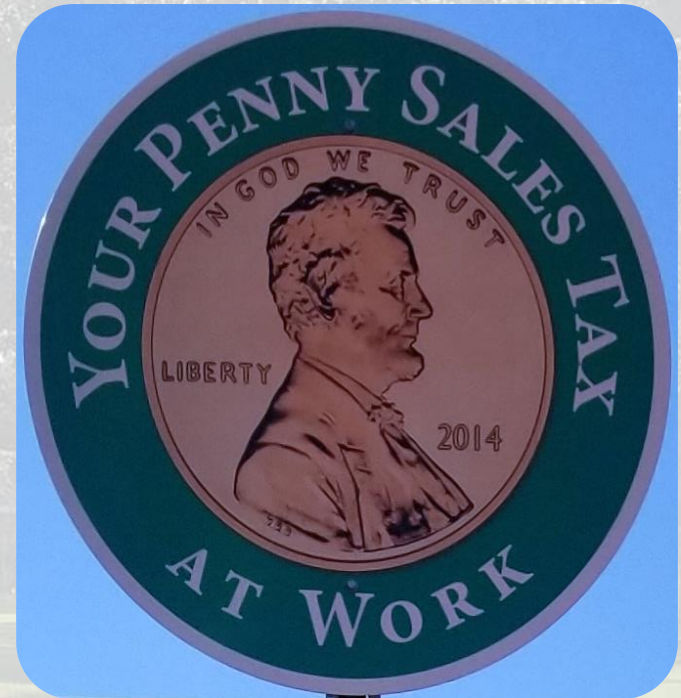
Virtual Public Meeting Presentation

COVID Notice:
Due to COVID-19
concerns and social
distance requirements,
this public meeting will
be presented virtually

On-line 11/10/2021 to 11/24/2021

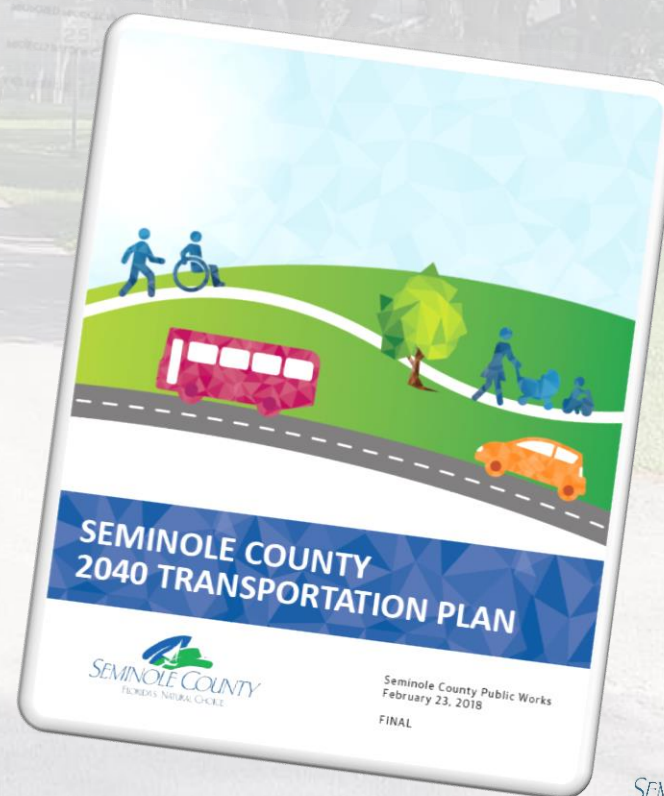
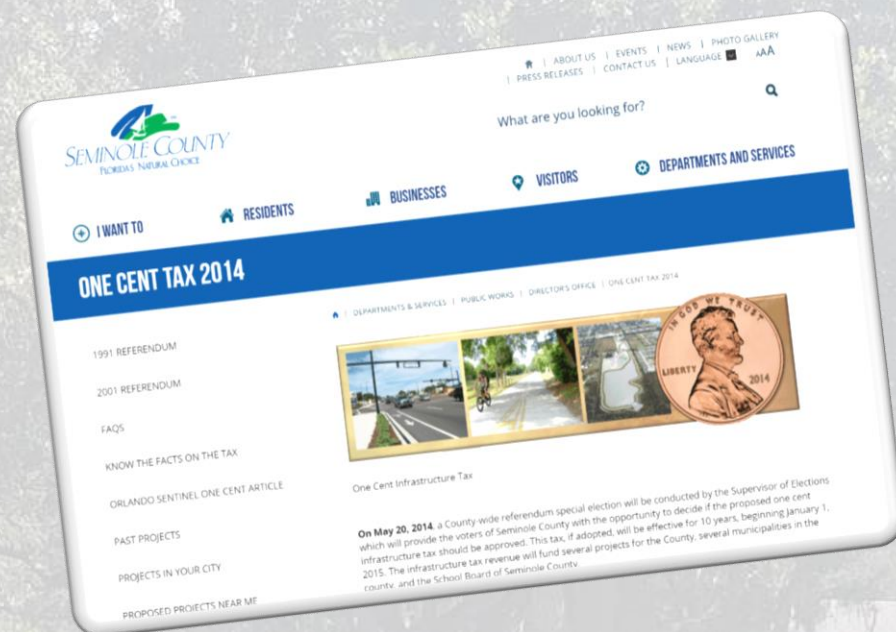
AGENDA

- Introduction
- Project Overview
- Project Details
- Typical Design Plans
- Recent Similar Projects
- Next Steps



INTRODUCTION

- Sidewalk and Pedestrian Safety Improvements
- Funded by 2014 Seminole County One Cent Infrastructure Sales Tax
- Commitment to improving pedestrian facilities and safety Countywide
- Provide connectivity to nearby communities, business and parks.



INTRODUCTION

- Design Phase for the Project – 60% Design
- This project involves adding 5' wide sidewalk to one side of each street within the subdivision.
- This meeting is to provide a status update on the project and seek any input from residents before proceeding to Final Plans and Construction Phase.



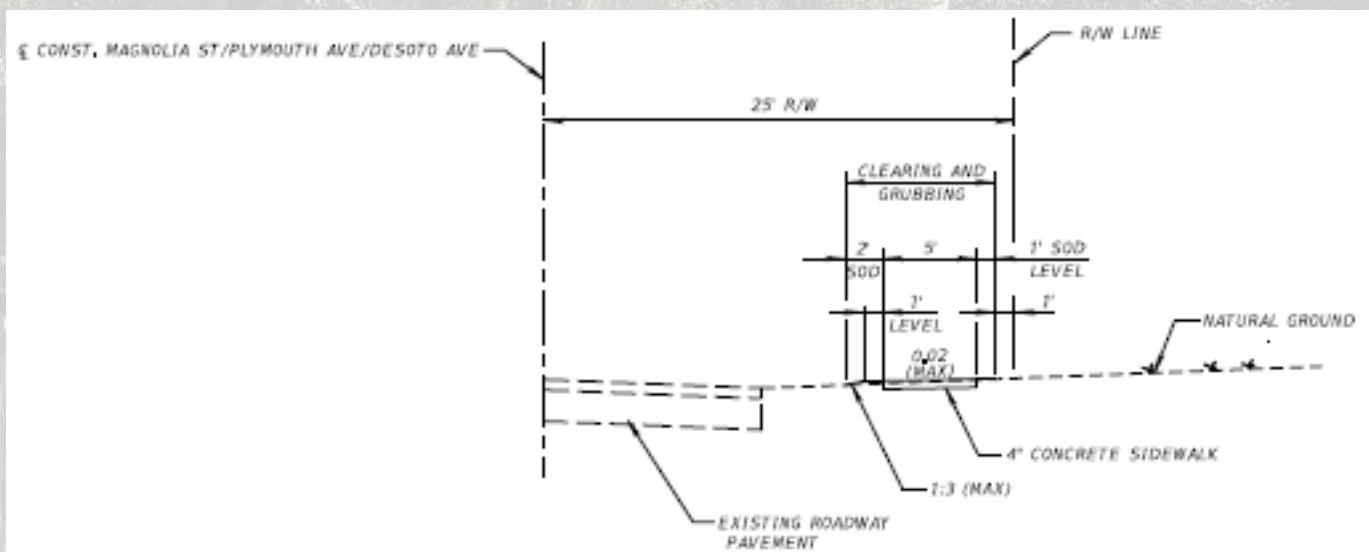
PROJECT OVERVIEW

- Project Location
- Harmony Homes Subdivision
- Provide new 5' sidewalks along the following:
 - Magnolia Street - along the south side, from Sanford Avenue to Desoto Avenue.
 - Plymouth Avenue - along the east side, from Mercury Street to Magnolia Street.
 - Desoto Avenue - along the east side, from Mercury Street to Magnolia Street.
 - Ford Avenue - along the west and south side, from Mercury Street to Desoto Avenue.
 - Mercury Street - along the north side, from Sanford Avenue to Ford Avenue.
- Meet Americans with Disabilities Act (ADA)
- Meet Seminole County design standards
- Improve safety
- Provide connectivity
- Stay *within* existing right-of-way to extent possible
- Minimize impacts to residences



Project Details

- Place sidewalks along one side of the roadway



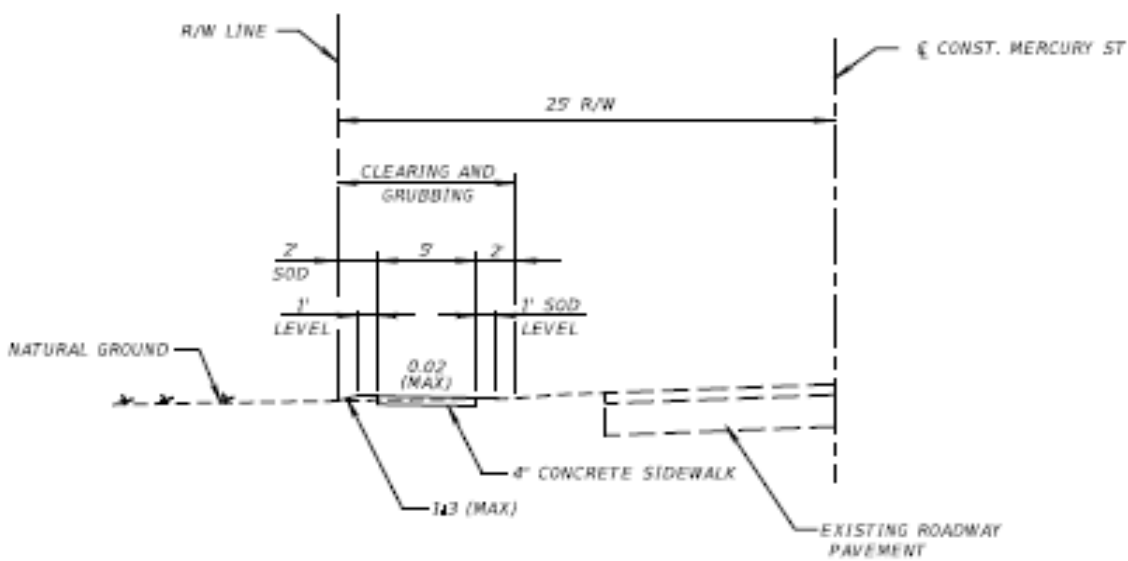
Important elements:

- 5' sidewalks
- Match existing grades
- Reconstruct driveways if exceeds 2% grade

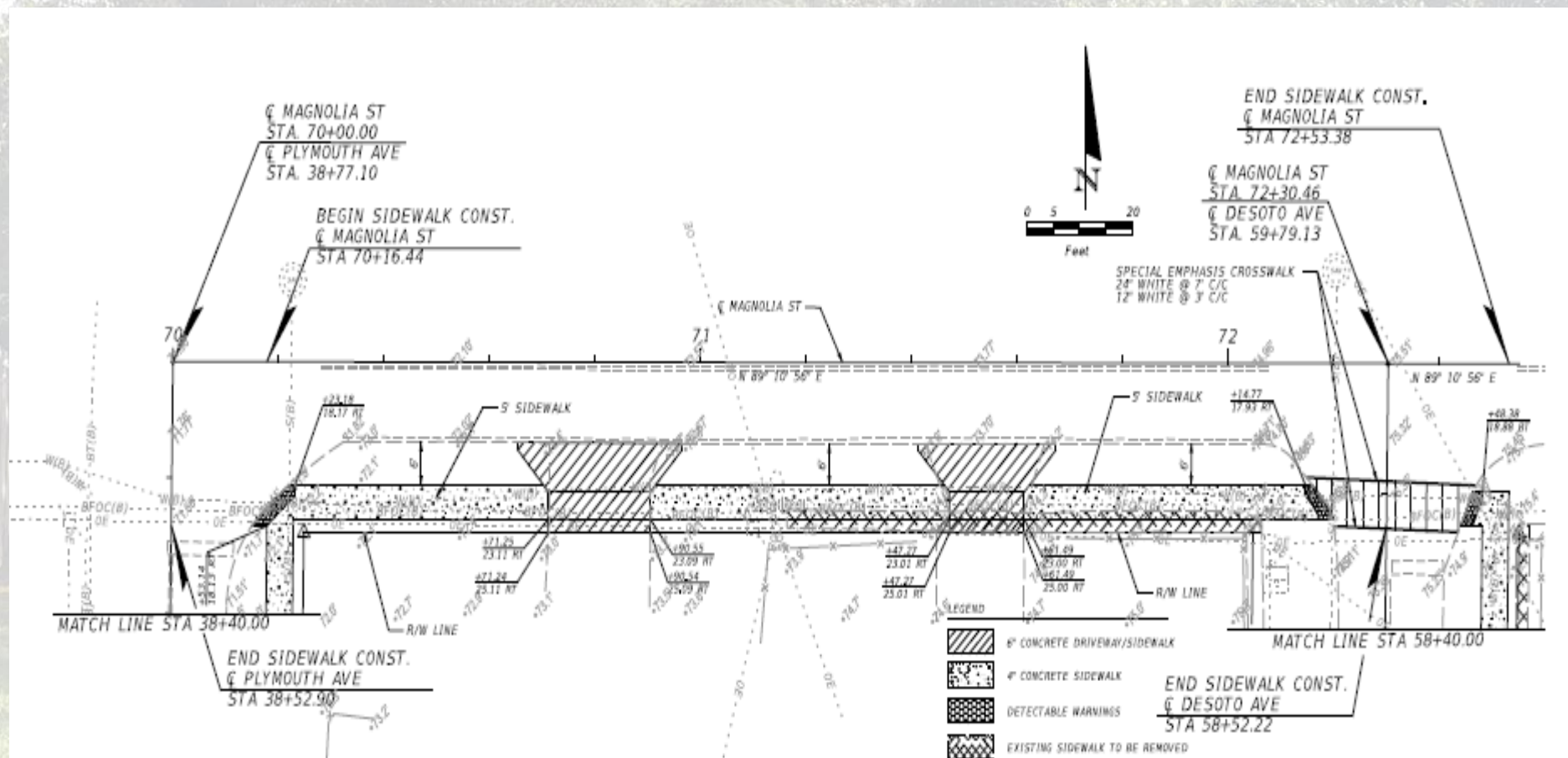
Minimal Impacts to:

- Driveways
- Landscaping
- Mailboxes

*To maintain community's friendly appeal and functionality



TYPICAL DESIGN PLANS



A copy of the design plans can be found at the project website under project documents at <https://www.seminolecountyfl.gov/cip02107062>

RECENT SIMILAR PROJECTS

- Recent sidewalk projects



Temple Terrace Neighborhood

- Azalea Ave.
- Carrigan Ave.

Milwee Middle School

- Plumosa Ave.
- Lake Mobile Dr.
- Oak Ave.
- 3 others

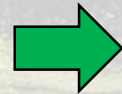
Bear Lake Elem. School

- Curtis Dr.
- Carbone Way
- Jerome Way
- 3 others

NEXT STEPS

- We want to obtain feedback from residents **before** proceeding to construction phase.

**WE ARE
HERE**



**Initiate
Design**

Begin Data Collection,
Assemble Design Plans,
and Apply for Permits



**Design
60%**

Complete Final Design, Create
Bid Package, and Obtain Permits
– December 30, 2021



**Construction
Bidding**

Anticipated Start – February 28, 2022
Anticipated Finish - April 11, 2022



Construction

Anticipated Start – April 12, 2022
Anticipated Completion – August 12, 2022

THANK YOU!

- Thank you for attending!
- Please send us your comments and questions
- Via Comment Form on the project website
- Comment Period – November 10th to November 24th, 2021
- Comments are due on or before November 24th, 2021 via website Comment Form or e-mail
- Harmony Homes Sidewalk Project Website:
<https://www.seminolecountyfl.gov/cip02107062>

David Martin, P.E.

Project Manager

Seminole County Public Works Engineering

dmartin02@seminolecountyfl.gov

407-665-5610