

Slavia Road Extension – Alternatives Study

District 1 Commissioner Bob Dallari

District 2 Commissioner Jay Zembower



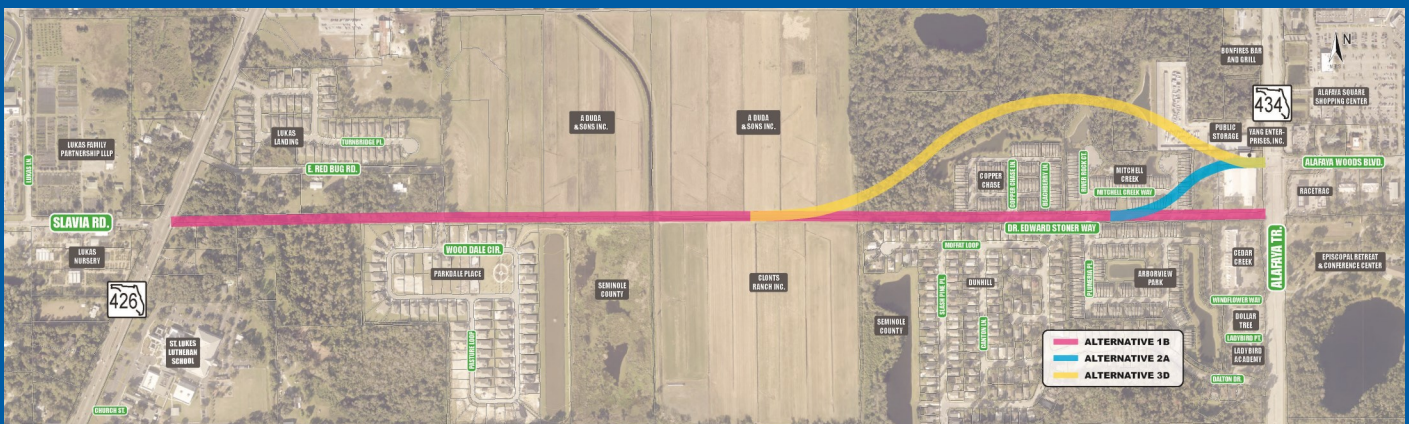
PS-2826-20 / CIP:02207084

Project Description

Seminole County has initiated a study to evaluate alternatives for extending Slavia Road to the east to provide another option for traveling from Aloma Avenue (State Road (S.R.) 426) to Alafaya Trail (S.R. 434). Seminole County has scheduled a **Public Information Meeting** about the project on **Tuesday, September 19, at 6 p.m.** This meeting will allow the project team to explain the alternatives and receive feedback from the community.

Projected traffic volumes in the area show a need to create alternative east-west connections to help alleviate congestion on Chapan Road and Mitchell Hammock Road. The purpose of the study is to evaluate potential alignments and their associated right of way impacts, environmental impacts, stormwater needs and cost. The roadway concept under consideration is a four-lane roadway extending about 1.3 miles. Alternatives are being developed along three general alignments shown below.

After receiving public input and reviewing the alternatives, Seminole County will decide whether to advance any of the alternatives to design. Comments and questions received by September 29, 2023, will be included in the public meeting record.



The first alternative follows the pink line and travels straight across from the Slavia Road/Aloma Avenue intersection to the Alafaya Trail/Dr. Edward Stoner Way intersection. The second alternative diverges along the blue line around Copper Chase, then heads south toward the Mitchell Creek neighborhood and connects with Alafaya Trail at Alafaya Woods Boulevard. The final alternative is shown by the yellow line and would extend north through the Mitchell Creek neighborhood to the Alafaya Trail/Alafaya Woods Boulevard intersection.

Ways To Participate

The meeting will be held in a hybrid format to allow interested persons to attend in person or virtually over the internet. Attendees will receive the same information and have an opportunity to ask questions and provide comments. Project information is also available on the Seminole County website. Scan the QR code above or go to <https://slavia-road-extension.stml>. Ways to join the meeting:

- **In-person:** Attend in person at the Oviedo Mall Community Room, 1700 Oviedo Mall Blvd., Oviedo, FL 32765. The meeting will begin at 6 p.m., with a presentation at 6:15 p.m. Attendees will be able to submit comments and speak with project team members after the presentation.
- **Virtual Meeting:** Join online from their computer, tablet or mobile device at 6 p.m. For this option, registration is required by going to: <https://bit.ly/3ONG0jV>. Once registered, you will receive an email with a link to join the meeting.

Public participation is solicited without regard to race, color, national origin, age, sex, religion or family status. Those desiring accommodation under the Americans with Disabilities Act (ADA) should contact ADA Coordinator Maria Ribas by email at MRibas@seminolecountyfl.gov, or by phone at 407-665-7941 at least seven days before the meeting.

For More Information contact:

Arturo Perez, MSCE, P.E.
Seminole County Project Manager
Public Works Department
Engineering Division
100 East First Street
Sanford, FL 32771
Aperez07@seminolecountyfl.gov