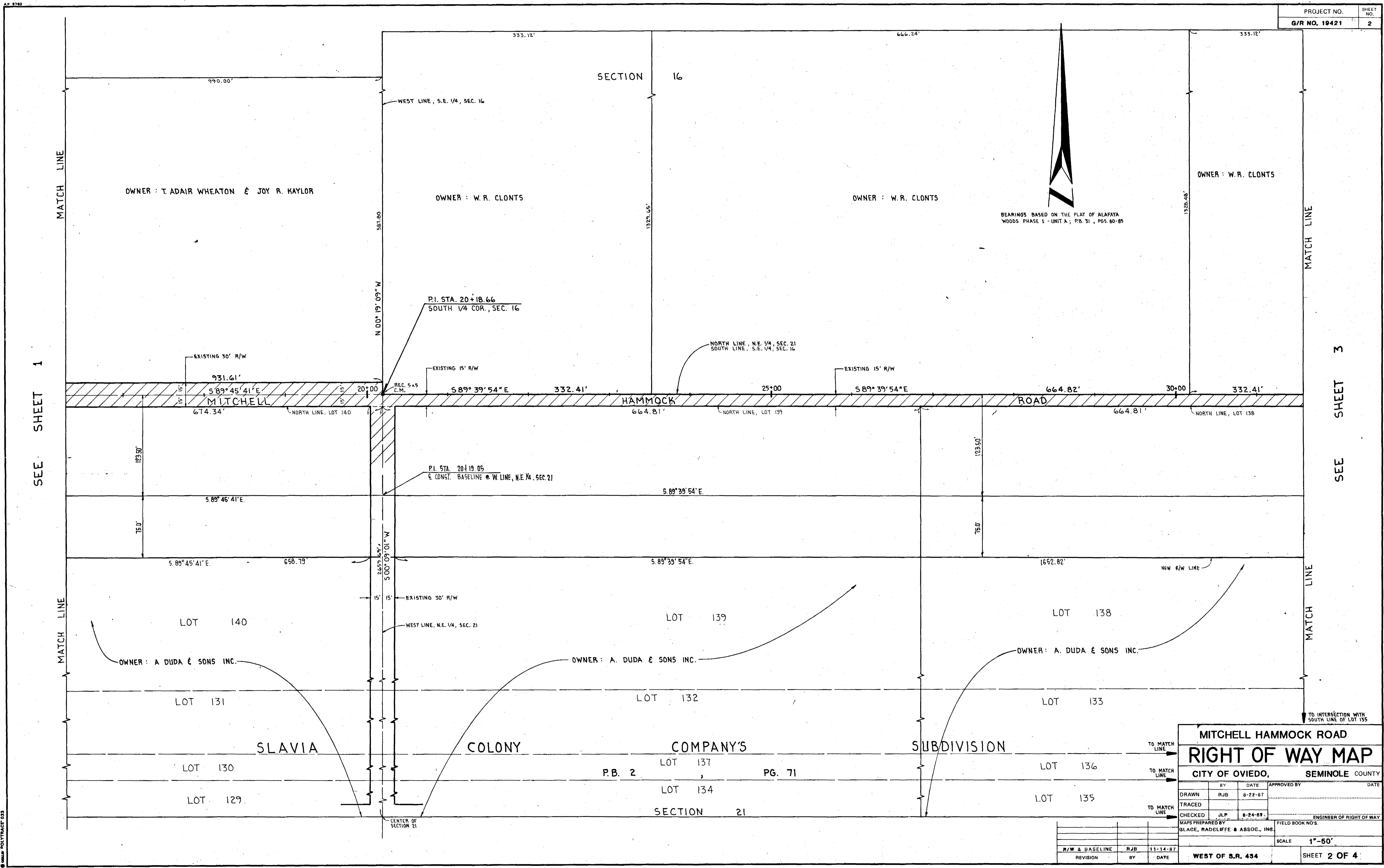


**MITCHELL HAMMOCK ROAD
RIGHT OF WAY MAP**

CITY OF OVIEDO, SEMINOLE COUNTY

BY	DATE	APPROVED BY	DATE
DRAWN	RJB	8-22-87	
TRACED			
CHECKED	JLP	8-24-87	

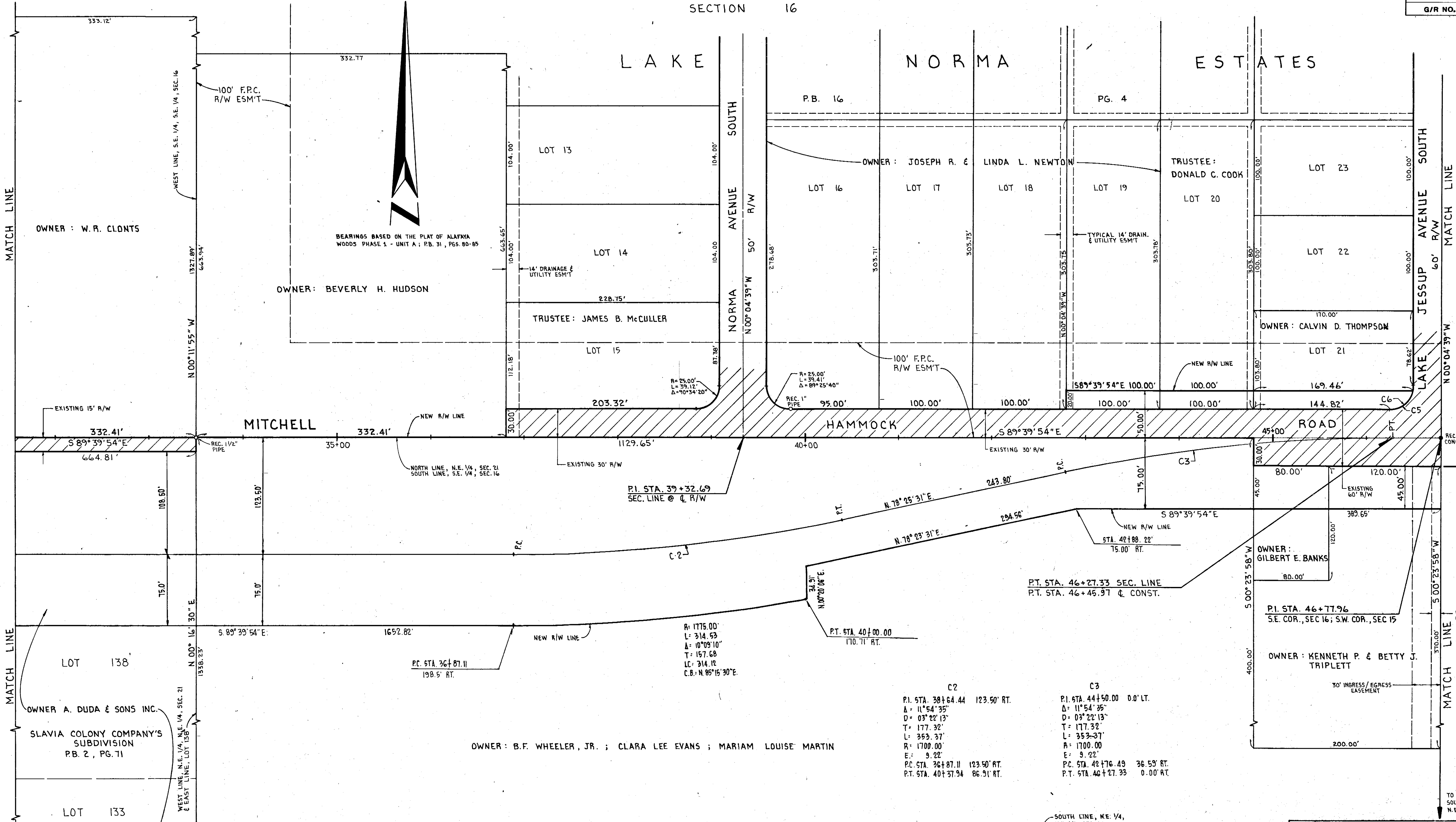
MAPS PREPARED BY: GLAZE, RADCLIFFE & ASSOC., INC. FIELD BOOK NO. S
SCALE: 1"=50'
WEST OF S.R. 434 SHEET 1 OF 4



MITCHELL HAMMOCK ROAD			
RIGHT OF WAY MAP			
CITY OF OVIEDO,		SEMINOLE COUNTY	
BY	DATE	APPROVED BY	DATE
RJB	8-22-87		
TRACED			
CHECKED	JLP	8-24-87	
MAPS PREPARED BY			ENGINEER OF RIGHT OF WAY
GLAGE, RADCLIFFE & ASSOC., INC.			FIELD BOOK NOS.
SCALE			1"=50'
WEST OF S.R. 434			SHEET 2 OF 4

SECTION 16

LAKE NORMA ESTATES



SECTION 21

CURVE TABLE

CURVE	RADIUS	ARC	DELTA	TANGENT	CHORD	BEARING
C5	25.00'	39.45'	90°24'45"	25.18'	35.48'	S 45°07'43"W
C6	25.00'	34.24'	78°27'47"	20.41'	31.62'	S 31°06'12"W

**MITCHELL HAMMOCK ROAD
RIGHT OF WAY MAP**

CITY OF OVIEDO, SEMINOLE COUNTY

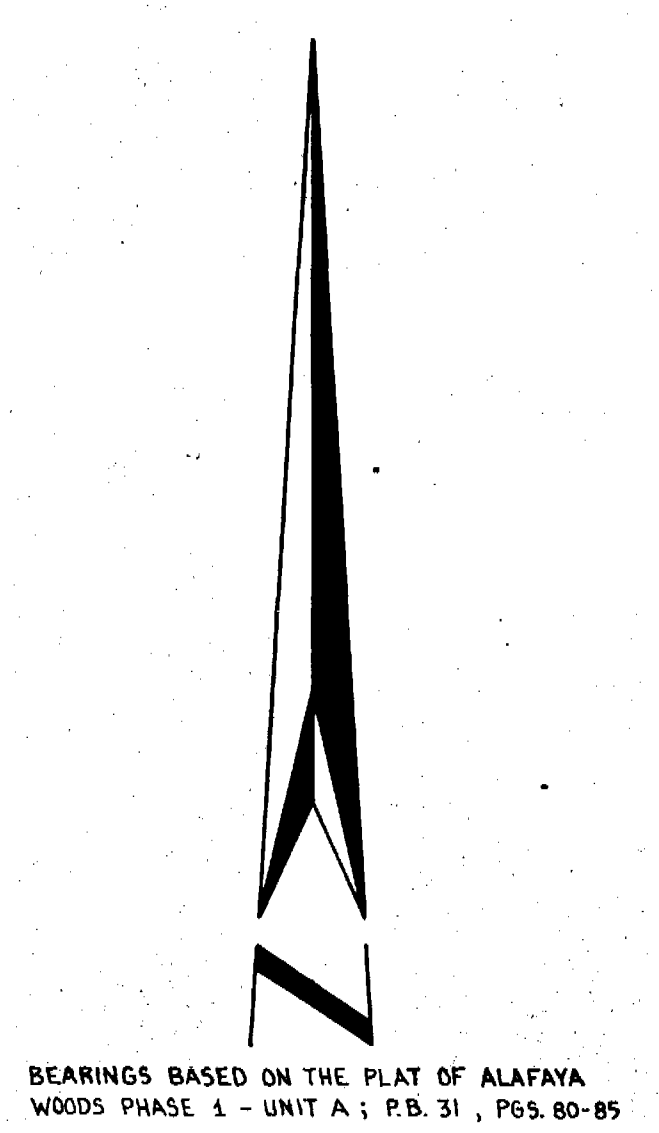
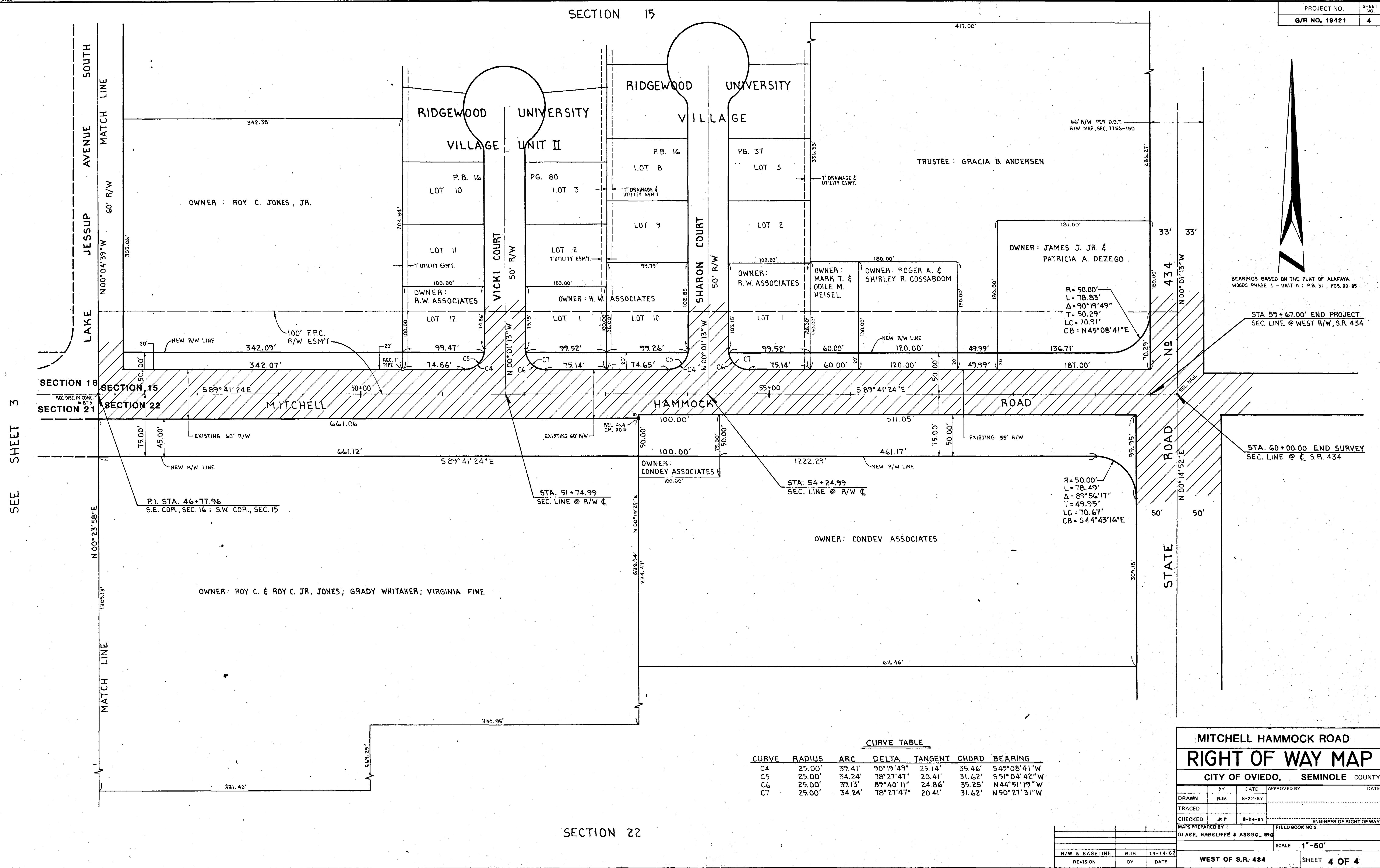
BY	DATE	APPROVED BY	DATE
DRAWN: RJB	8-22-87		
TRACED:			
CHECKED: JLP	8-24-87		

MAPS PREPARED BY: SLA&E, RADCLIFFE & ASSOC., INC.
SCALE: 1"=50'
WEST OF S.R. 484 SHEET 3 OF 4

SEE SHEET 2

SEE SHEET 4

SECTION 15



STA 59+67.00' END PROJECT
SEC. LINE @ WEST R/W, S.R. 434

STA. 60+00.00' END SURVEY
SEC. LINE @ S.R. 434

CURVE TABLE						
CURVE	RADIUS	ARC	DELTA	TANGENT	CHORD	BEARING
C4	25.00'	39.41'	90°19'49"	25.14'	35.46'	S45°08'41"W
C5	25.00'	34.24'	78°27'47"	20.41'	31.62'	S51°04'42"W
C6	25.00'	39.13'	89°40'11"	24.86'	35.25'	N44°51'19"W
C7	25.00'	34.24'	78°27'47"	20.41'	31.62'	N50°27'31"W

MITCHELL HAMMOCK ROAD
RIGHT OF WAY MAP
CITY OF OVIEDO, SEMINOLE COUNTY

BY	DATE	APPROVED BY	DATE
DRAWN RJB	8-22-87		
TRACED			
CHECKED JLP	8-24-87		

ENGINEER OF RIGHT OF WAY
MAPS PREPARED BY
GLACE, BAGELIFFE & ASSOC., INC.
FIELD BOOK NO'S

SCALE 1"=50'
WEST OF S.R. 434
SHEET 4 OF 4

SECTION 22

SEE SHEET 3