



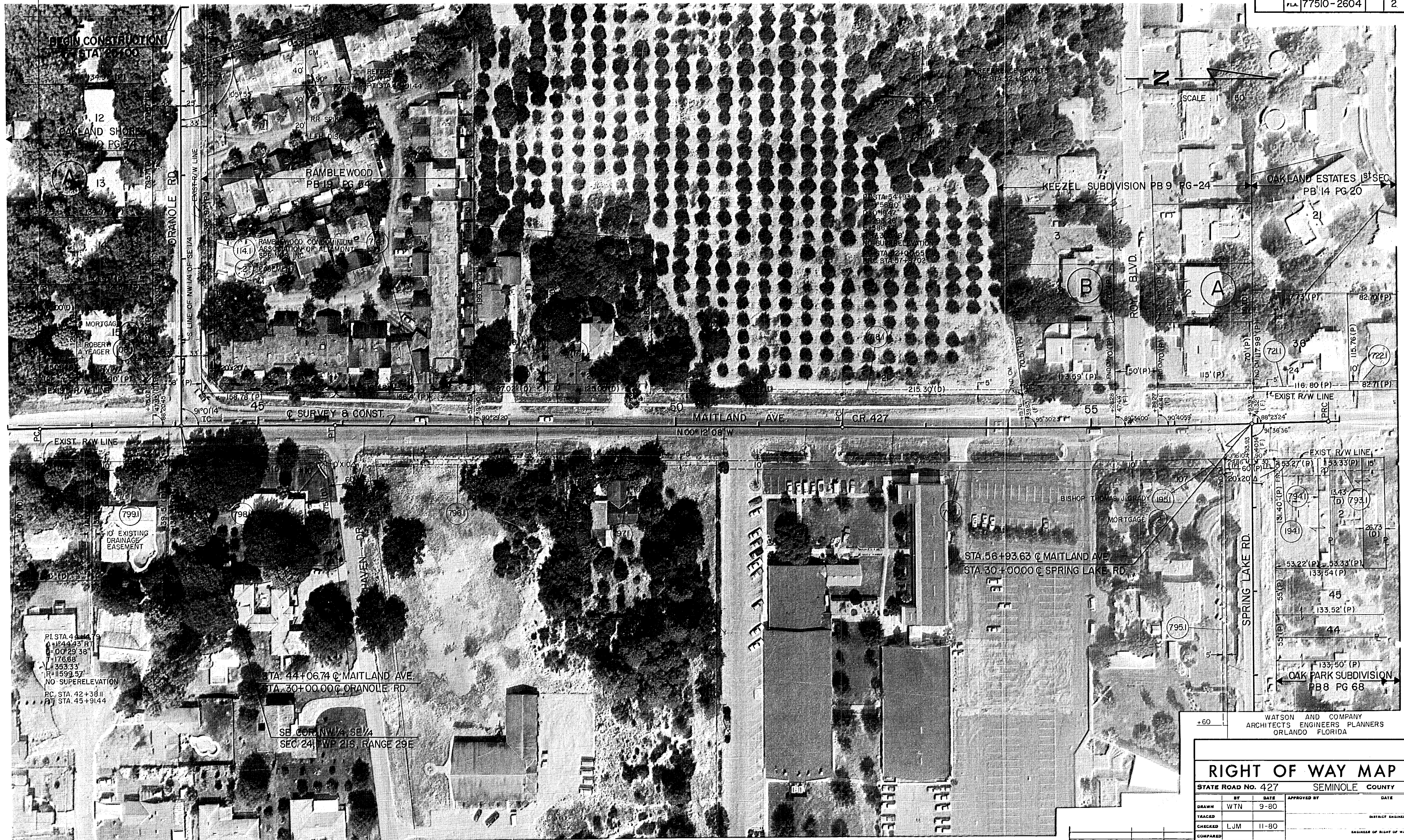
THIS RIGHT OF WAY MAP APPROVED BY RESOLUTION OF THE BOARD OF COUNTY COMMISSIONERS OF SEMINOLE COUNTY, FLORIDA, AT ITS REGULAR MEETING HELD ON THE _____ DAY OF _____, A.D. 1980.

_____ CHAIRMAN

WATSON AND COMPANY
ARCHITECTS ENGINEERS PLANNERS
ORLANDO FLORIDA

RIGHT OF WAY MAP			
STATE ROAD NO. 427		SEMINOLE COUNTY	
BY	DATE	APPROVED BY	DATE
DRAWN	WTN 9-80		
TRACED			DISTRICT ENGINEER
CHECKED	LJM 11-80		
COMPARED			ENGINEER OF RIGHT OF WAY
INDEXED			STATE HIGHWAY ENGINEER

898-1-80



SEC. 24, T-21-S, R-29-E

PHOTO. DATE: 6-80

SECTION 77510-2604 SHEET 2 OF 7

MAITLAND AVE. (FROM ORANGE COUNTY LINE TO S.R. 436)

898-280



WATSON AND COMPANY
ARCHITECTS ENGINEERS PLANNERS
ORLANDO FLORIDA

RIGHT OF WAY MAP		STATE ROAD NO. 427		SEMINOLE COUNTY	
DRAWN	BY	DATE	APPROVED BY	DATE	
TRACED	WTN	9-80		DISTRICT ENGINEER	
CHECKED	LJM	11-80		ENGINEER OF RIGHT OF WAY	
COMPALED				STATE HIGHWAY ENGINEER	
INDEXED					
SECTION 77510-2604			SHEET 3 OF 7		

SEC. 24, T-21-S, R-29-E

PHOTO DATE: 6-80

MAITLAND AVE. (FROM ORANGE COUNTY LINE TO S.R. 436)

898-3-80



WATSON AND COMPANY
ARCHITECTS ENGINEERS PLANNERS
ORLANDO FLORIDA

RIGHT OF WAY MAP	
STATE ROAD NO. 427	SEMINOLE COUNTY
DRAWN BY WTN	DATE 9-80
TRACED	
CHECKED BY LJM	DATE 11-80
COMPARED	
INDEXED	
SECTION 77510-2604 SHEET 4 OF 7	

SEC. 24, T-21-S, R-29-E

PHOTO DATE: 6-80

MAITLAND AVE. (FROM ORANGE COUNTY LINE TO S.R. 436)

898-4-80



PI STA 102+93.95
 Δ = 1° 57' 16" RT
 D = 3° 0' 20"
 T = 293.20
 L = 586.33
 R = 17188.73
 NO SUPERELEVATION
 PC STA 100+00.75
 PTC STA 06+87.08

REFERENCE POINTS
 PC STA 100+00.75

WATSON AND COMPANY
 ARCHITECTS ENGINEERS PLANNERS
 ORLANDO FLORIDA

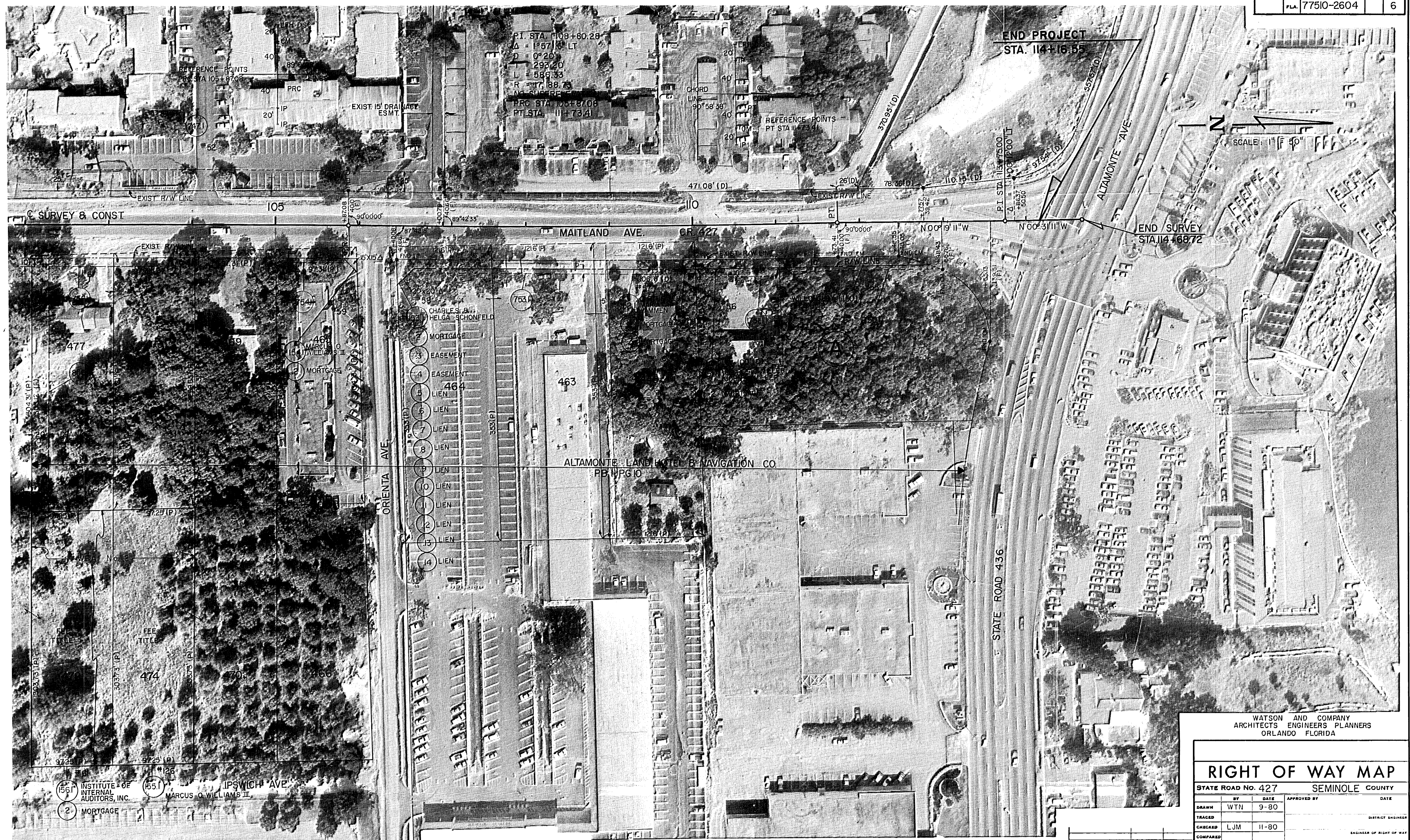
RIGHT OF WAY MAP			
STATE ROAD NO. 427		SEMINOLE COUNTY	
DRAWN	BY	DATE	APPROVED BY
TRACED	WTN	9-80	
CHECKED	LJM	11-80	
COMPALED			
INDEXED			
SECTION 77510-2604		SHEET 5 OF 7	

SEC. 13, T-21-S, R-29-E

PHOTO DATE: 6-80

MAITLAND AVE. (FROM ORANGE COUNTY LINE TO S.R. 436)

898-5-80



P.I. STA. 108+80.28
 $\Delta = 1^{\circ}57'16''$ LT
 $D = 0^{\circ}20'$
 $L = 292.20$
 $R = 1788.73$
 NO. 415878
 PRC STA. 106+87.08
 PT. STA. 111+73.41

END PROJECT
 STA. 114+16.55

SCALE: 1" = 80'

- 1 MORTGAGE
- 2 EASEMENT
- 3 EASEMENT
- 4 EASEMENT
- 5 LIEN
- 6 LIEN
- 7 LIEN
- 8 LIEN
- 9 LIEN
- 10 LIEN
- 11 LIEN
- 12 LIEN
- 13 LIEN
- 14 LIEN

ALTAMONTE LAND HOTEL & NAVIGATION CO.
 P.B. WPG IO

156.I INSTITUTE OF INTERNAL AUDITORS, INC.
 155.I IPSWICH AVE. MARCUS O. WILLIAMS III
 -2- MORTGAGE

WATSON AND COMPANY
 ARCHITECTS ENGINEERS PLANNERS
 ORLANDO FLORIDA

RIGHT OF WAY MAP			
STATE ROAD No. 427		SEMINOLE COUNTY	
DRAWN	BY	DATE	APPROVED BY
TRACED	WTN	9-80	
CHECKED	LJM	11-80	
COMPARED			
INDEXED			
SECTION 77510-2604		SHEET 6 OF 7	

SEC. 13, T-21-S, R-29-E

PHOTO DATE: 6-80

MAITLAND AVE. (FROM ORANGE COUNTY LINE TO S.R. 436)

898-6-80