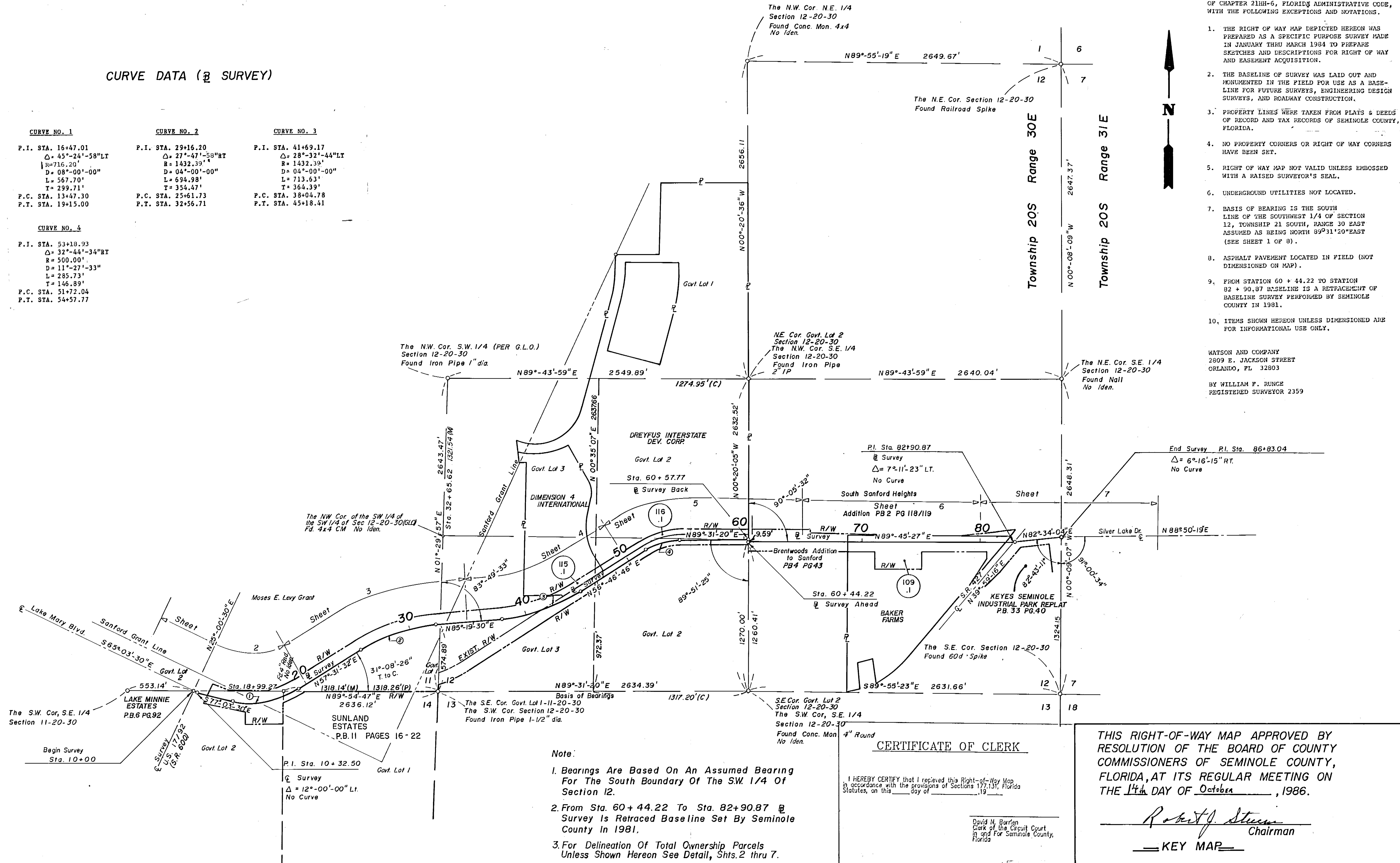


CURVE DATA (BY SURVEY)

CURVE NO. 1	CURVE NO. 2	CURVE NO. 3
P.I. STA. 16+47.01 Δ = 45°-24'-58"LT R = 716.20' D = 08°-00'-00" L = 567.71' T = 299.71' P.C. STA. 13+47.30 P.T. STA. 19+15.00	P.I. STA. 29+16.20 Δ = 27°-47'-58"RT R = 1432.39' D = 04°-00'-00" L = 694.98' T = 354.47' P.C. STA. 25+61.73 P.T. STA. 32+56.71	P.I. STA. 41+69.17 Δ = 28°-32'-44"LT R = 1432.39' D = 04°-00'-00" L = 713.63' T = 364.39' P.C. STA. 38+04.78 P.T. STA. 45+18.41
CURVE NO. 4		
P.I. STA. 53+18.93 Δ = 32°-44'-34"RT R = 500.00' D = 11°-27'-33" L = 285.73' T = 146.89' P.C. STA. 51+72.04 P.T. STA. 54+57.77		



CERTIFICATION
I HEREBY CERTIFY THAT THE RIGHT-OF-WAY MAP OF SURVEY REPRESENTED HEREON MEETS THE REQUIREMENTS OF CHAPTER 21HH-6, FLORIDA ADMINISTRATIVE CODE, WITH THE FOLLOWING EXCEPTIONS AND NOTATIONS.

1. THE RIGHT OF WAY MAP DEPICTED HEREON WAS PREPARED AS A SPECIFIC PURPOSE SURVEY MADE IN JANUARY THRU MARCH 1984 TO PREPARE SKETCHES AND DESCRIPTIONS FOR RIGHT OF WAY AND EASEMENT ACQUISITION.
2. THE BASELINE OF SURVEY WAS LAID OUT AND MONUMENTED IN THE FIELD FOR USE AS A BASELINE FOR FUTURE SURVEYS, ENGINEERING DESIGN SURVEYS, AND ROADWAY CONSTRUCTION.
3. PROPERTY LINES WERE TAKEN FROM PLATS & DEEDS OF RECORD AND TAX RECORDS OF SEMINOLE COUNTY, FLORIDA.
4. NO PROPERTY CORNERS OR RIGHT OF WAY CORNERS HAVE BEEN SET.
5. RIGHT OF WAY MAP NOT VALID UNLESS EMBOSSED WITH A RAISED SURVEYOR'S SEAL.
6. UNDERGROUND UTILITIES NOT LOCATED.
7. BASIS OF BEARING IS THE SOUTH LINE OF THE SOUTHWEST 1/4 OF SECTION 12, TOWNSHIP 21 SOUTH, RANGE 30 EAST ASSUMED AS BEING NORTH 99°31'20"EAST (SEE SHEET 1 OF 8).
8. ASPHALT PAVEMENT LOCATED IN FIELD (NOT DIMENSIONED ON MAP).
9. FROM STATION 60 + 44.22 TO STATION 82 + 90.87 BASELINE IS A RETRACEMENT OF BASELINE SURVEY PERFORMED BY SEMINOLE COUNTY IN 1981.
10. ITEMS SHOWN HEREON UNLESS DIMENSIONED ARE FOR INFORMATIONAL USE ONLY.

WATSON AND COMPANY
2809 E. JACKSON STREET
ORLANDO, FL 32803
BY WILLIAM F. RUNGE
REGISTERED SURVEYOR 2359

- Note:
1. Bearings Are Based On An Assumed Bearing For The South Boundary Of The SW 1/4 Of Section 12.
 2. From Sta. 60 + 44.22 To Sta. 82 + 90.87 @ Survey Is Retraced Baseline Set By Seminole County In 1981.
 3. For Delineation Of Total Ownership Parcels Unless Shown Hereon See Detail, Shts. 2 thru 7.

CERTIFICATE OF CLERK
I HEREBY CERTIFY that I received this Right-of-Way Map in accordance with the provisions of Sections 177.131, Florida Statutes, on this _____ day of _____, 1986.
David N. Barfen
Clerk of the Circuit Court
in and for Seminole County,
Florida

THIS RIGHT-OF-WAY MAP APPROVED BY RESOLUTION OF THE BOARD OF COUNTY COMMISSIONERS OF SEMINOLE COUNTY, FLORIDA, AT ITS REGULAR MEETING ON THE 14th DAY OF October, 1986.
Robert J. Stearn
Chairman
KEY MAP

665-1-84

WATSON AND COMPANY
ARCHITECTS ENGINEERS PLANNERS
TAMPA ORLANDO FT. MYERS

DRAWN BY: S.S.	SCALE: 1" = 400'
CHECKED BY: J.L.	DATE: 5-84

REVISIONS

SEMINOLE COUNTY ENGINEERING DEPARTMENT
SEMINOLE COUNTY, FLORIDA
RIGHT OF WAY MAP - LAKE MARY BLVD.
PROJ. NO. 085057 SHEET 1 OF 7
REVISED APRIL 1986



CURVE DATA
 P.I. Sta. 16+47.01 Survey
 Δ = 45° 24' 58" Lt.
 R = 8° 00' 00"
 L = 299.71
 P.C. Sta. 13+47.30 Survey
 P.T. Sta. 19+15.00 Survey

MOSES E. LEVY GRANT

- Legend**
- F.C.M. Found Conc. Mon.
 - F.I.P. Found Iron Pipe
 - F.I.R. Found Iron Rod
 - FN&D Found Nail & Disc
 - S.I.R. Set Iron Rod
 - S.N&D Set Nail & Disc, Mkd. LB 121
 - (P) Plat Measurement
 - (C) Calculated Distance
 - (M) Measured Distance
 - (D) Deed Distance

PHOTO DATE 3/8/84

R/W MAP PREPARED BY:
WATSON AND COMPANY
 (SURVEY DATE)
 DATE: Jan. To Mar. 1984
 REVISED APRIL 1986

SEMINOLE COUNTY ENGINEERING DEPARTMENT
 SEMINOLE COUNTY, FLORIDA
RIGHT OF WAY MAP - LAKE MARY BLVD.
 PROJ. NO. 085057 SHEET 2 OF 7

Lake Minnie Estates
 P.B. 6 Page 92

Sunland Estates
 P.B. 11 Pages 16-22

665-2-84

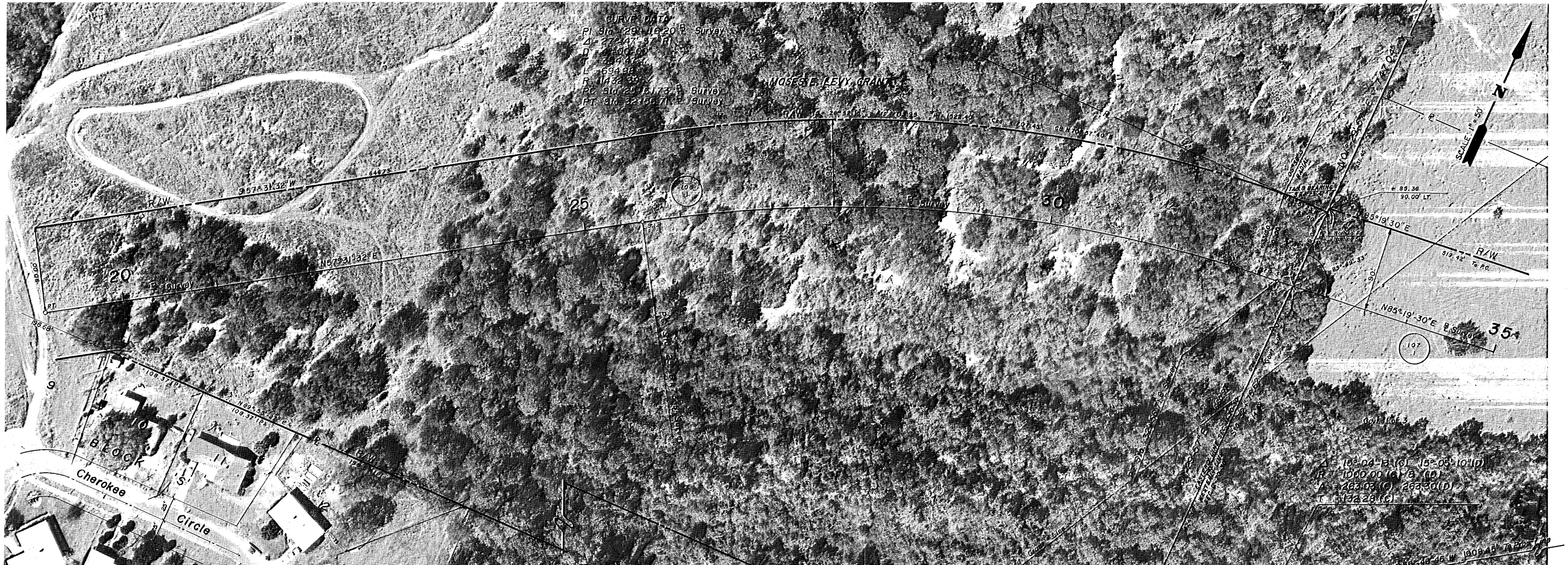
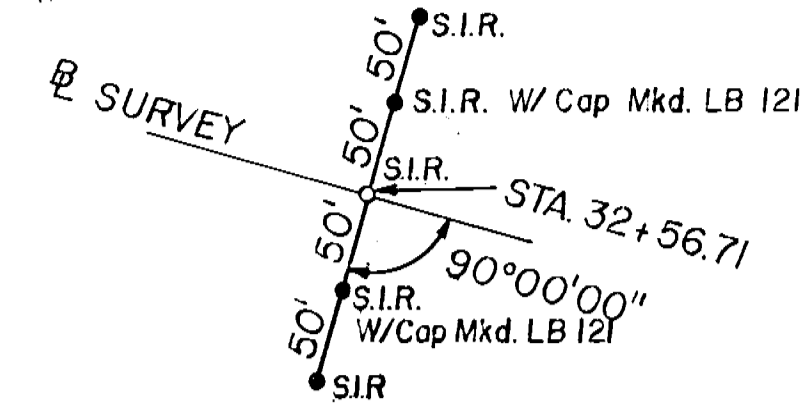
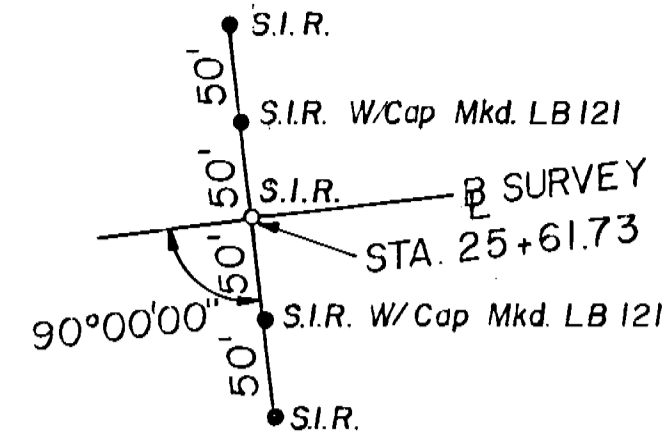
WATSON AND COMPANY
 ARCHITECTS ENGINEERS PLANNERS
 TAMPA ORLANDO FT. MYERS

REVISIONS	DRAWN BY: S.S.	SCALE: 1" = 50'
	CHECKED BY: J.L.	DATE: 5-84

Township 20S

Range 30E

The N.W. Cor. S.W. 1/4, (PER G.L.O.)
Section 12-20-30
Found Iron Pipe



CURVE DATA
 PI 316.29 (16.20) Survey
 Δ 27°47'57" R
 D 2360.60
 L 384.47
 R 694.89
 PC 316.29 (16.73) Survey
 PT 316.32 (16.71) Survey

25

30

35

Cherokee Circle

MOSES F. LEVY GRANT

Sunland Estates P.B. II Pages 16-22

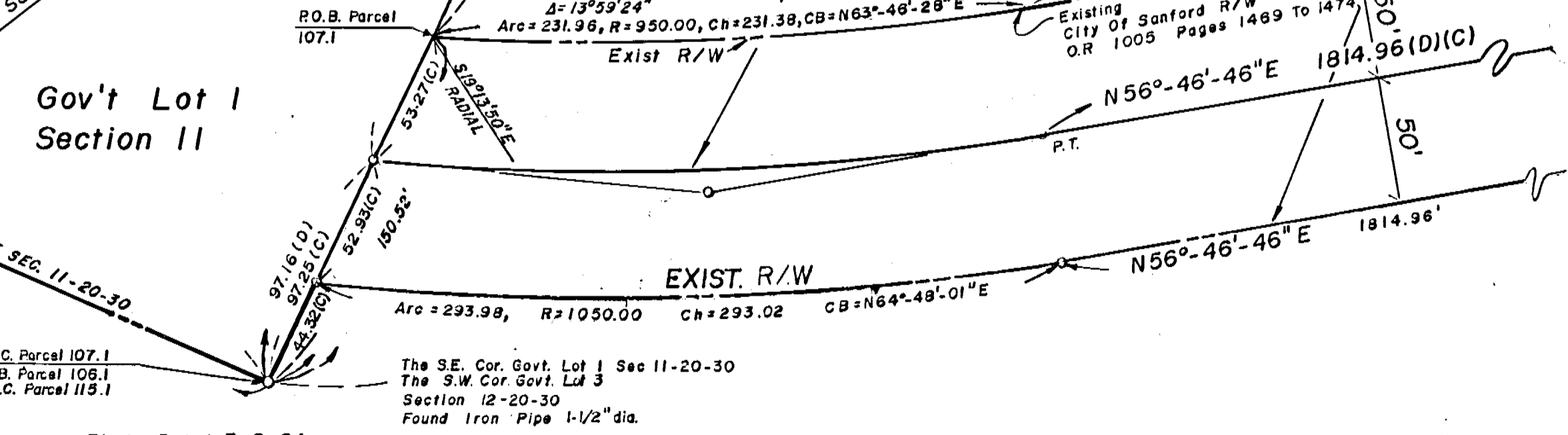


Photo Date: 3-8-84

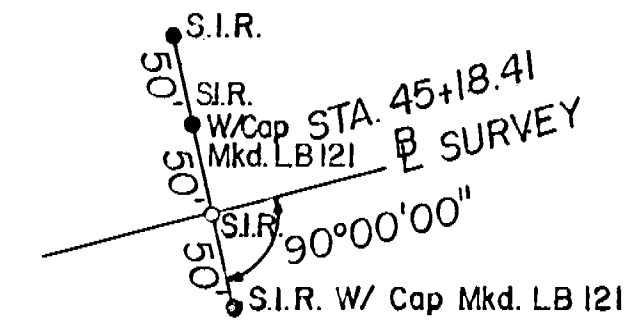
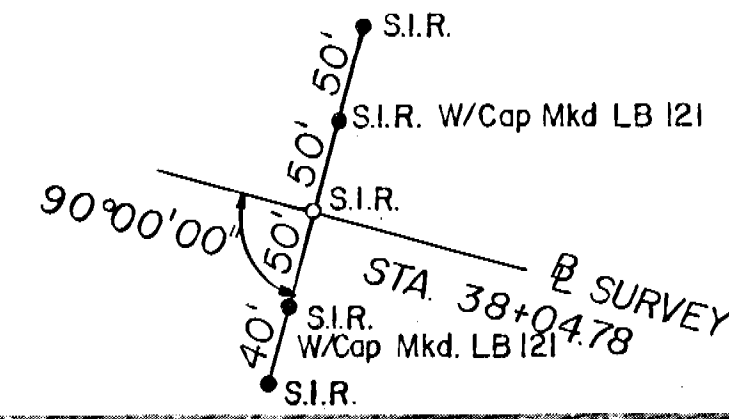
665-3-84

WATSON AND COMPANY
 ARCHITECTS ENGINEERS PLANNERS
 TAMPA ORLANDO FT. MYERS

REVISIONS	DRAWN BY:	S.S.	SCALE:	1" = 50'
	CHECKED BY:	J.L.	DATE:	5-84

R/W MAP PREPARED BY:
WATSON AND COMPANY
 (SURVEY DATE)
 DATE: Jan. To Mar. 1984
 REVISED APRIL 1986

SEMINOLE COUNTY ENGINEERING DEPARTMENT
 SEMINOLE COUNTY, FLORIDA
RIGHT OF WAY MAP — LAKE MARY BLVD.
 PROJ. NO. 085057 SHEET 3 OF 7



Carriage Cove (Trailer Park)

Photo Date: 3-8-84

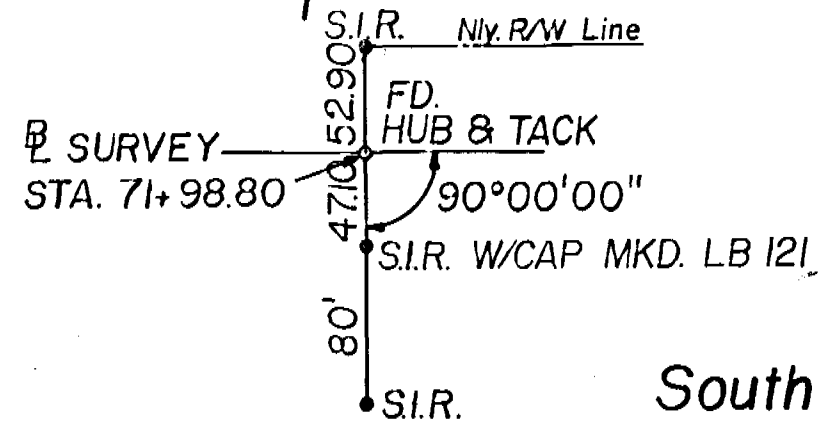
665-4-84

WATSON AND COMPANY
 ARCHITECTS ENGINEERS PLANNERS
 TAMPA ORLANDO FT. MYERS

REVISIONS	DRAWN BY:	SCALE:
	S.S.	1" = 50'
	CHECKED BY:	DATE:
	J.L.	5-84

R/W MAP PREPARED BY:
WATSON AND COMPANY
 (SURVEY DATE)
 DATE: Jan. To Mar. 1984
 REVISED APRIL 1986

SEMINOLE COUNTY ENGINEERING DEPARTMENT
 SEMINOLE COUNTY, FLORIDA
RIGHT OF WAY MAP — LAKE MARY BLVD.
 PROJ. NO. 085057 SHEET 4 OF 7



South Sanford Heights Addition Plat Book 2 Pages 118 & 119



Albin St. 122
 N89°-54'-17"E 476.85 (P) 476.90 (C)
 Brentwood Grove
 Plat Book 7 Page 62
 476.85 (P) 476.90 (C)

The S. Bdy Of Section 12

Photo Date: 3-8-84

665-6-84

WATSON AND COMPANY ARCHITECTS ENGINEERS PLANNERS TAMPA ORLANDO FT. MYERS	DRAWN BY: S.S.	SCALE: 1" = 50'
	CHECKED BY: J.L.	DATE: 5 - -84
REVISIONS		

R/W MAP PREPARED BY:
WATSON AND COMPANY
 (SURVEY DATE)
 DATE: Jan. To Mar. 1984
 REVISED APRIL 1986

SEMINOLE COUNTY ENGINEERING DEPARTMENT
 SEMINOLE COUNTY, FLORIDA
RIGHT OF WAY MAP — LAKE MARY BLVD.
 PROJ. NO. 085057 SHEET 6 OF 7

Township 20S

Range 30E

Township 20S

Range 31E

South Sanford Heights Addition Plat Book 2 Pages 118 & 119

The N.E. Corner
S.E. 1/4, Section 12-20-30
Fnd Nail
NO IDEN.

P.O.C.
Parcel 110.1
111.1

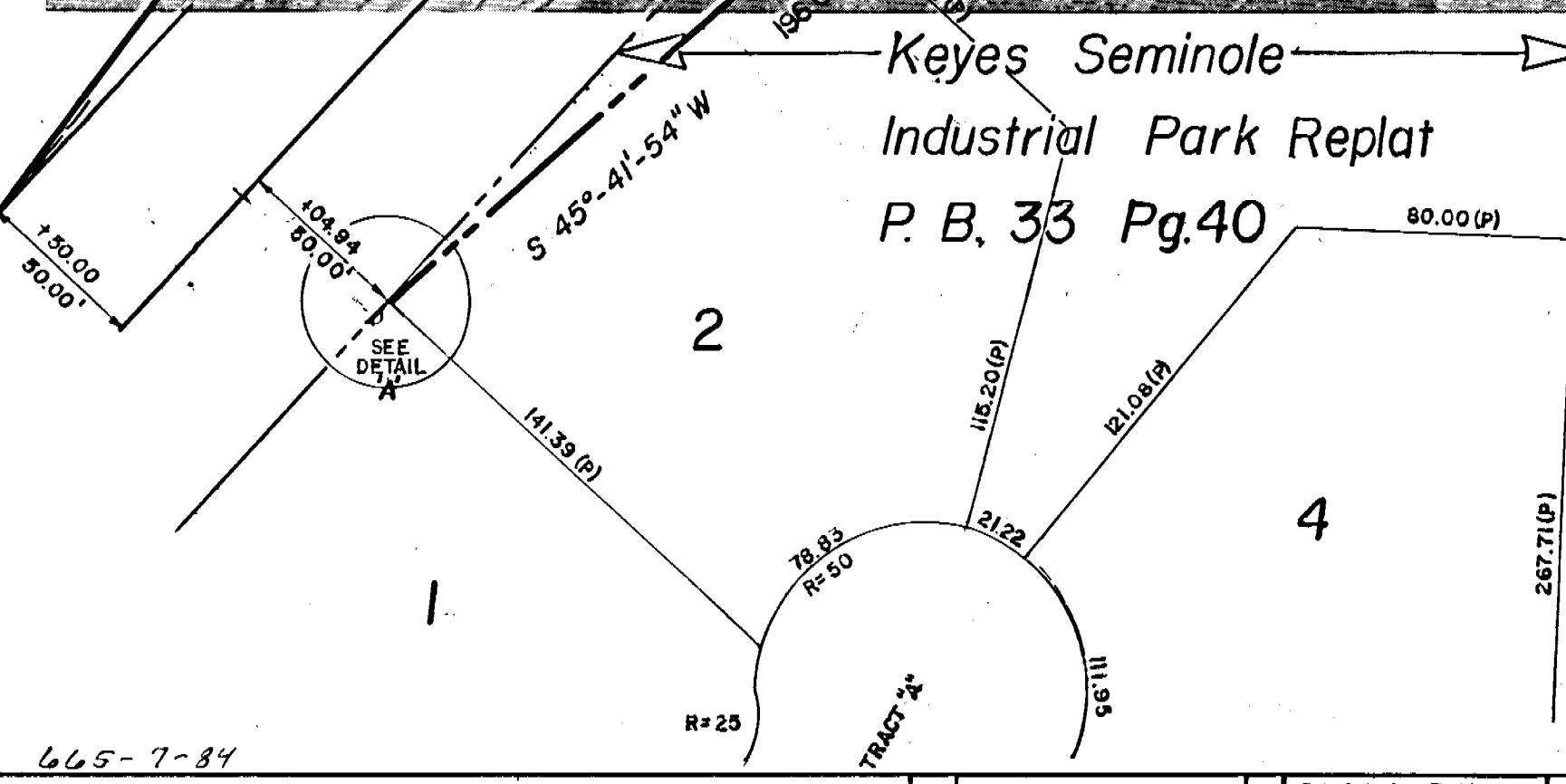
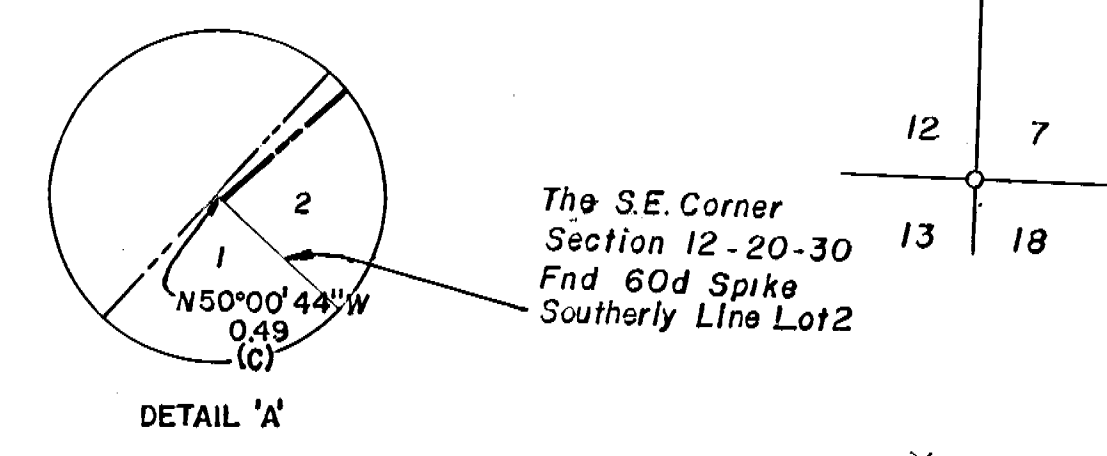


CURVE DATA				
CURVE	Δ	LENGTH	RADIUS	CHORD BEARING
A	0°13'48"	12.93'	2814.93'	N39°31'23"E
B	1°53'00"	95.81'	2914.93'	N39°02'46"E
C	0°57'28"	43.64'	2914.93'	N39°33'32"E
D	0°01'32"	52.17'	2914.93'	N38°37'02"E
E	0°40'55"	33.50'	2814.93'	N08°04'01"W
F	2°48'10"	137.69'	2814.93'	N06°19'29"W
G	3°29'05"	171.19'	2814.93'	N06°39'56"W
H	1°12'51"	69.66'	2814.93'	N38°19'31"E

SCALE: 1" = 50'

OWNERSHIP LISTING

PARCEL NUMBER	SHEET NUMBER	OWNER	AREA TAKEN	REMAINDER RIGHT LEFT	REMARKS
101.1	2	PERRON, GUY J.	7665 SF	1.76 AC 0	CRB 1914-1108
102.1	2	GREGORY, R.K.	3,147 AC	1.29 AC 0	CRB 1814-1576
103.1	2	SEMINOLE CO. SCH.	11308 SF	.55 AC 0	CRB 1937-423
106.1	2-3	SEMINOLE CO. SCH.	12,030 AC	0 7.21 AC	1939-423
107.1	3-4	DREYFUS INTERSTATE DEVELOPMENT CORP.	6,159 AC	0 1.86 AC	1978-553
108.1	5-6	WHITE, GARNETT	2,077 AC	0 0	1914-1108
109.1	6-7	BAKER FARMS, INC.	5,777 AC	18.1 AC 0	1914-1108
110.1	7	LIL CHAMP FOOD STORES	14464 SF	0.52 AC 0	1786-1917
111.1	7	WRIGHT, ALBERTA	5265 SF	11765 SF 0	1891-1682
112.1	7	KEYS SEMINOLE INDUS. PARK INVESTORS LTD	4380 SF	46523 SF 0	1971-1202
115.1	4	DIMENSION 4 INT'L INC.	18814 SF	0 14.57 AC	1888-841
116.1	4	DREYFUS INTERSTATE	1,158 AC	0 74.79 AC	1891-1518
117.1	5-6	PEACOCK, FRANK H.	14697 SF	2.93 AC 0	1914-1108
118.1	6	MEYERS, ELGIN & JAYNE L.	157 SF	0 7823 SF	1870-235
119.1	6	THIGPEN, INEX LIFE ESTATE	1446 SF	0 14514 SF	1970-240
120.1	7	EDWARDS, GEO & ALICE	1171 SF	0 8126 SF	1888-1789
121.1	7	ALDAY, MYRON, L. & MARG. Y	5797 SF	0 4832 SF	1869-1454
807.1	4	DREYFUS INTERSTATE DEVELOPMENT CORP.	1888 SF	- 1888-254	PERMANENT BASEMENT



665-7-84

WATSON AND COMPANY
ARCHITECTS ENGINEERS PLANNERS
TAMPA ORLANDO FT. MYERS

DRAWN BY: S.S. SCALE: 1" = 50"
CHECKED BY: W.F.R. DATE: 8-84

1 PARCEL 112.1 4/7/80 WR REVISIONS

Photo Date: 3-8-84

R/W MAP PREPARED BY:
WATSON AND COMPANY
(SURVEY DATE)
DATE: Jan To Mar 1984
REVISED APRIL 1986

SEMINOLE COUNTY ENGINEERING DEPARTMENT
SEMINOLE COUNTY, FLORIDA

RIGHT OF WAY MAP — LAKE MARY BLVD.

PROJ. NO. 085057 SHEET 7 OF 7