

Growing Mediums

Rockwool

Perlite

Coco Peat

NFT













Advantages

- Isolation from soil pests and diseases.
- More efficient use of Water.
- More efficient use of Fertilizer.
- More control of the plant.
- Every plant has the same rooting environment.
- Less land needed to produce food
- Supply the supermarkets 52 weeks of the year.











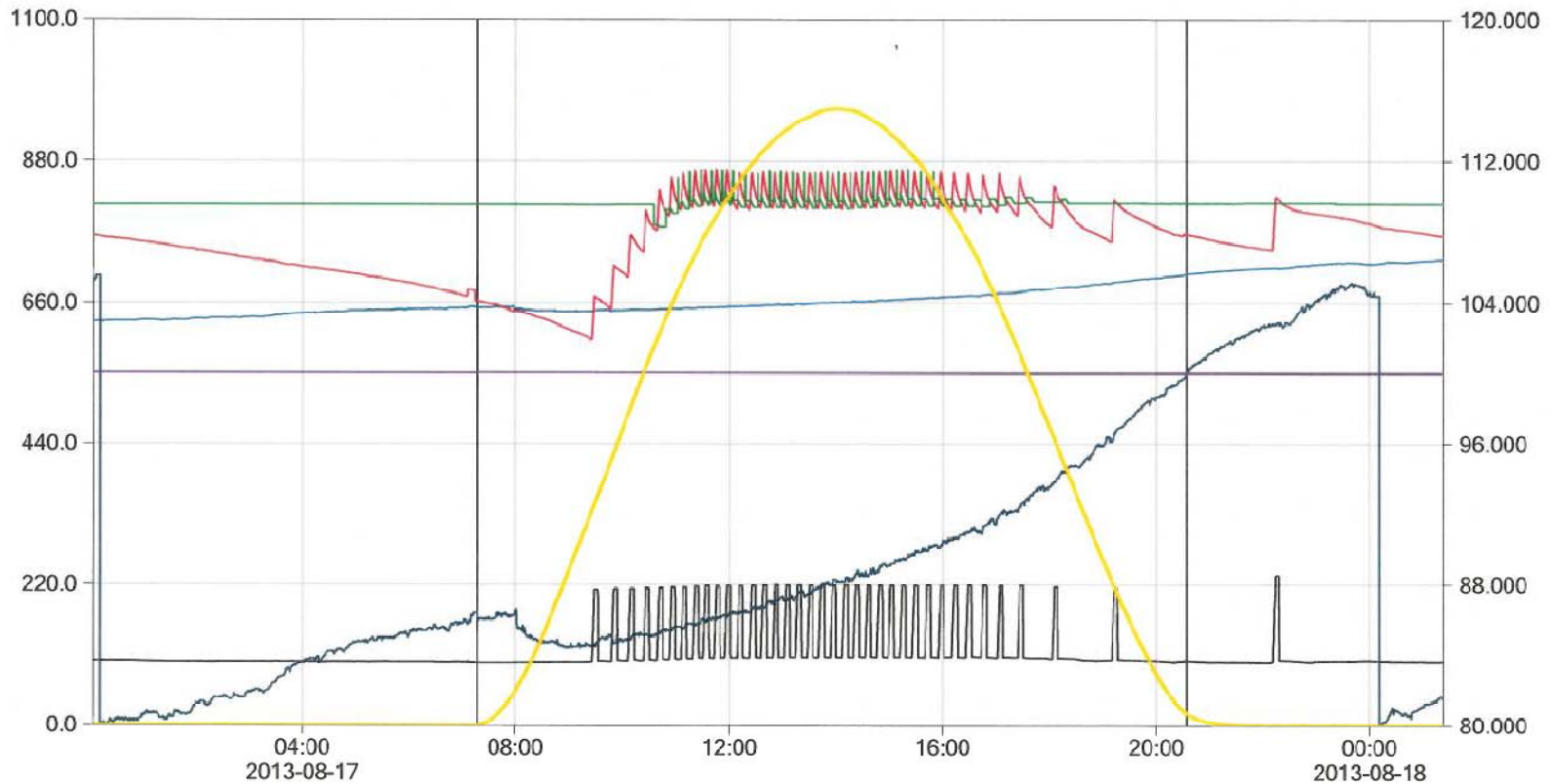




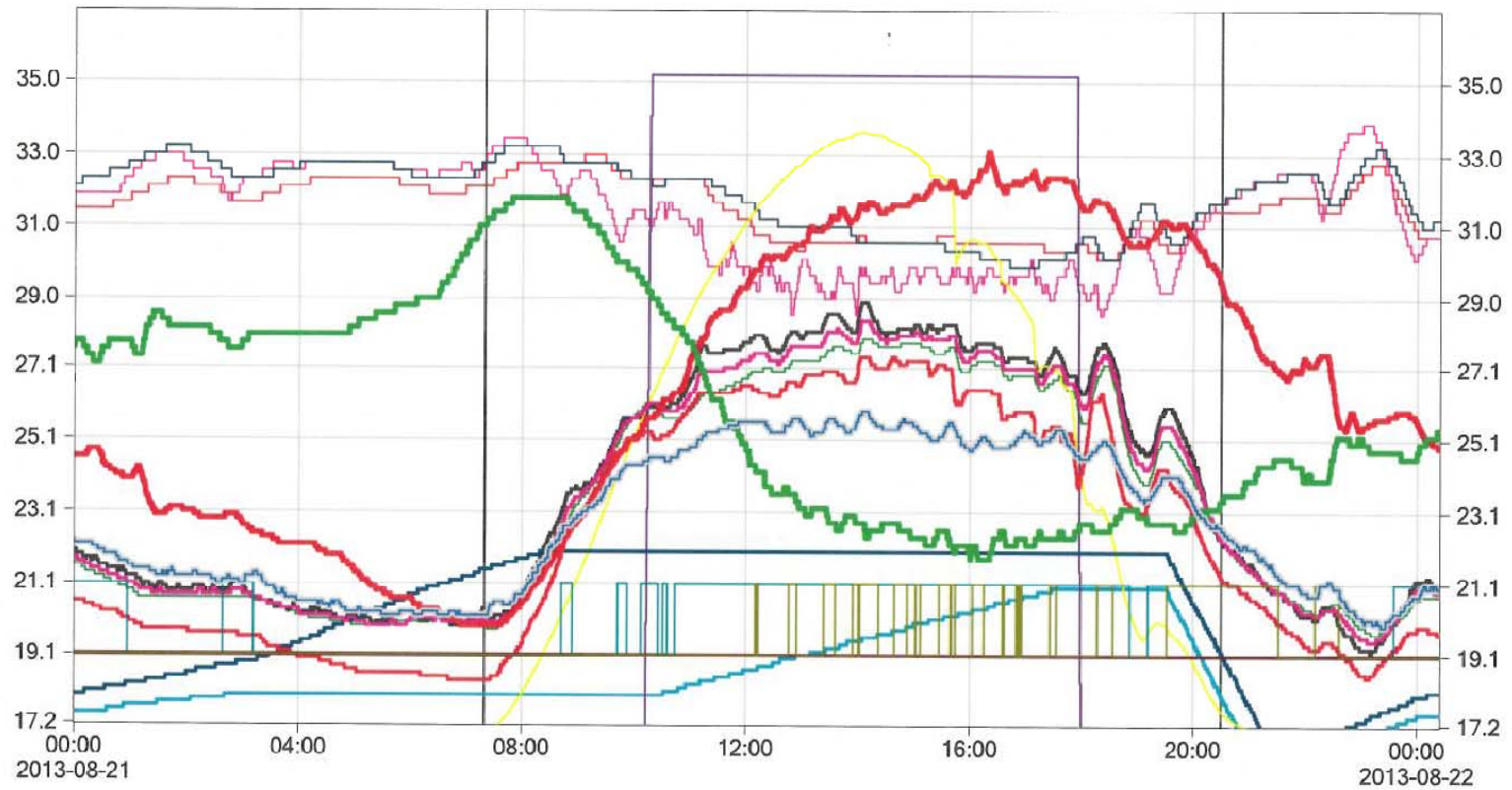
Supertif pressure compensating /
self-closing dripper set.







| Variable | Category | Control | Controller | Upper limit | Lower limit |
|---|---------------------|------------------|------------|-------------|-------------|
| Plant weight [kg] | ProDrain control 3 | ProDrain meter | ProDrain | 120.000 | 80.000 |
| Slab weight [kg] | ProDrain control 3 | ProDrain meter | ProDrain | 30.000 | -2.000 |
| Saturation weight [kg] | ProDrain control 3 | ProDrain meter | ProDrain | 30.00 | -2.00 |
| Cumulative growth [kg/m ²] | ProDrain control 3 | ProDrain meter | ProDrain | 0.600 | 0.000 |
| Cum. weight changes other [kg/m] | ProDrain control 3 | ProDrain meter | ProDrain | 10.000 | -10.000 |
| Irrigationsensorweight [kg] | ProDrain control 3 | ProDrain meter | ProDrain | 10.000 | 0.000 |
| Radiation Intensity [W/m ²] | Meteo Tech Building | Weather Stations | MultiMa | 1100.0 | 0.0 |



| Variable | Category | Control | Controller | Upper limit | Lower limit |
|-------------------------------------|---------------------|-------------------|------------|-------------|-------------|
| Air Temperature [°C] | Blk. 30 low | Sensor Unit | MultiMa | 37.0 | 17.2 |
| RH [%] | Blk. 30 low | Sensor Unit | MultiMa | 100 | 11 |
| Air Temperature [°C] | Blk. 30 high rear | Sensor Unit | MultiMa | 37.0 | 17.2 |
| RH [%] | Blk. 30 high rear | Sensor Unit | MultiMa | 100 | 11 |
| Air Temperature [°C] | Blk. 30 high front | Sensor Unit | MultiMa | 37.0 | 17.2 |
| RH [%] | Blk. 30 high front | Sensor Unit | MultiMa | 100 | 11 |
| Calculated Ventilation Setpoint [°] | Blk. 30 | Block Ventilation | MultiMa | 37.0 | 17.2 |
| Screen Position [%] | Blackout 30 | Screen General | MultiMa | 37.0 | 17.2 |
| Radiation Intensity [W/m²] | Meteo Tech Building | Weather Stations | MultiMa | 1197.5 | 10.2 |