



# Insurance Service Office (ISO) New Public Protection Classification December 14, 2021

# Presentation Overview

- **Introduction of ISO Representative**

**Michael Morash, Manager, ISO Community  
Hazard Mitigation**

- **Insurance Services Office Presentation**
- **Report Overview**
- **Fire Department Efforts**
- **Community Benefit**
- **Next Steps**
- **Questions**





# Seminole County Fire Department Class 1 Presentation

Michael C Morash  
CHM Manager

SERVE | ADD VALUE | INNOVATE



# ISO Public Protection Classification (PPC)

- ISO's PPC program accurately measures the effectiveness of public fire protection for structures in **46,200 fire districts across the country**.
- PPC considers the overall fire suppression service capability relative to the risk in the graded area.
- Better fire protection – as measured by the PPC – generally leads to a better loss experience for insured structural damage.



# Fire Suppression Rating Schedule (FSRS)

## Classes 1 to 10

90.00 to 100 + Points = Class 1

80.00 to 89.99 Points = Class 2

70.00 to 79.99 Points = Class 3

60.00 to 69.99 Points = Class 4

50.00 to 59.99 Points = Class 5

40.00 to 49.99 Points = Class 6

30.00 to 39.99 Points = Class 7

20.00 to 29.99 Points = Class 8

10.00 to 19.99 Points = Class 9

00.00 to 9.99 Points = Class 10

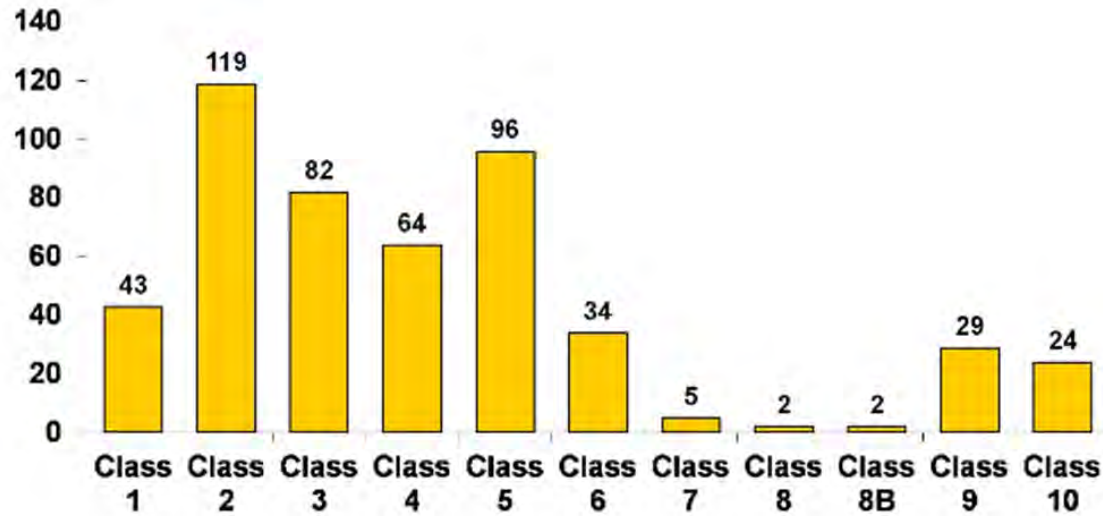
# Public Protection Classification Distribution

Countrywide



# Public Protection Classification Distribution

Florida

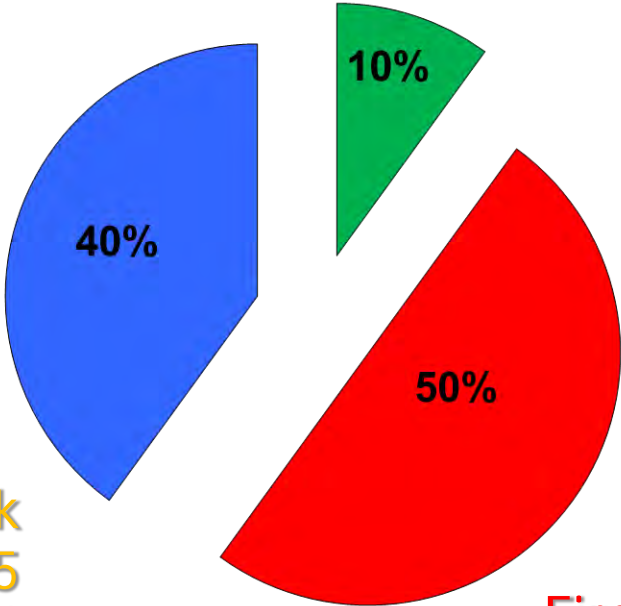
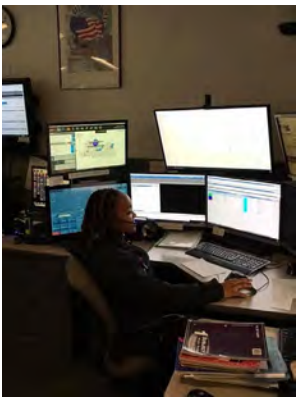


# Agencies Reviewed



Water Supply 40

Emergency Communications  
Center 10



Community Risk  
Reduction 5.5  
(Extra Points)



Fire Department 50







# Emergency Communications

- Emergency Reporting
  - Enhanced, Basic or No 9-1-1 System
  - Computer Aided Dispatch Facilities
  - Alarm receipt and processing at the communication center
- Telecommunicators
  - Training
  - Certification
- Dispatch Circuits
  - Available circuits
  - Emergency power
  - Dispatch recording

# Emergency Communications

The review of the ECC focuses on the community's facilities and support for handling and dispatching alarms for structure fires.

Points: 10 out of 10

To simulate a change in points for any sub-category, click on an individual chart.

## Emergency Reporting ⓘ



## Telecommunicators ⓘ



## Dispatch Circuits ⓘ



Compare the following: ☒ Peer Group ⓘ ☒ State Group · · ☒ Nationwide --





# Fire Department

---

- Equipment on Apparatus
  - Fire Engines
  - Reserve Engines
  - Pump Capacity
  - Ladder Service
  - Reserve Ladder Service
- Deployment Analysis
- Company Personnel
- Training
- Operational Considerations

# Fire Department

ISO focuses on a community's fire suppression capabilities by measuring the fire department's first-alarm response and initial attack to minimize potential loss. ISO reviews such items as engine companies, ladder or service companies, reserve apparatus, pumping capacity, equipment carried on apparatus, deployment of fire companies, company personnel, training, and operational considerations.

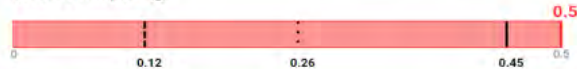
Points: **42** out of 50

To simulate a change in points for any sub-category, click on an individual chart.

## Engine Companies ①



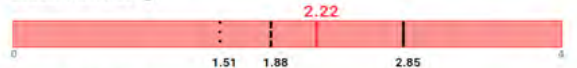
## Reserve Pumps ①



## Pump Capacity ①



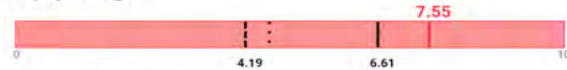
## Ladder / Service ①



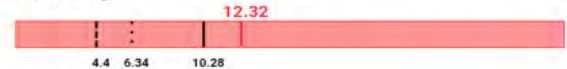
## Reserve Ladder / Service ①



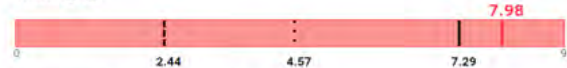
## Deployment ①



## Personnel ①



## Training ①



## Operational Considerations ①



# Water Supply

ISO evaluates the community's water supply system to determine the adequacy for fire suppression purposes. We also consider hydrant size, type, and installation, as well as the frequency and completeness of hydrant inspection and flow-testing programs.

Points: **35.2** out of 40

To simulate a change in points for any sub-category, click on an individual chart.

## Water System Capability ⓘ



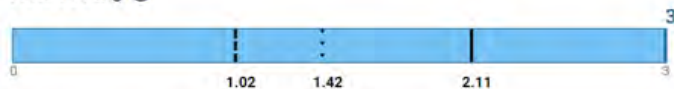
## Hydrants ⓘ



## Inspection ⓘ



## Flow Testing ⓘ





# Community Risk Reduction

- Fire Prevention Code Adoption and Enforcement
  - Code adoption and regulations
  - Fire Prevention staffing, training / certification
  - Fire Prevention programs
- Public Fire Safety Education
  - Educator qualifications / training
  - Fire safety programs
- Fire Investigation
- Fire investigation organization and staffing
- Fire investigator certification and training
- Use of the National Fire Incident Reporting System

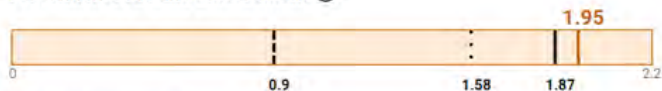
# Community Risk Reduction

ISO reviews the community's fire prevention code adoption and enforcement, public fire safety education, and fire investigation. This review can add an additional 5.5 points to a grading.

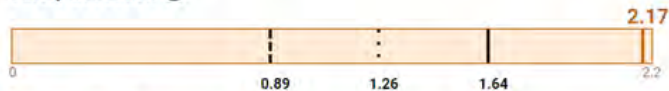
Points: **5.2** out of 5.5

To simulate a change in points for any sub-category, click on an individual chart.

## Prevention Code and Enforcement ⓘ



## Safety Education ⓘ



## Investigation ⓘ



Compare the following:

☒ Peer Group ⓘ

☒ State Group • •

☒ Nationwide --



# Summary of Public Protection Classification Review



FSRS Feature	Earned Credit	Credit Available
<b>Emergency Communications</b>		
414. Credit for Emergency Reporting	3.00	3
422. Credit for Telecommunicators	4.00	4
432. Credit for Dispatch Circuits	3.00	3
<b>440. Credit for Emergency Communications</b>	<b>10.00</b>	<b>10</b>
<b>Fire Department</b>		
513. Credit for Engine Companies	5.98	6
523. Credit for Reserve Pumpers	0.50	0.50
532. Credit for Pump Capacity	3.00	3
549. Credit for Ladder Service	2.22	4
553. Credit for Reserve Ladder and Service Trucks	0.50	0.50
561. Credit for Deployment Analysis	7.55	10
571. Credit for Company Personnel	12.32	15
581. Credit for Training	7.98	9
730. Credit for Operational Considerations	2.00	2
<b>590. Credit for Fire Department</b>	<b>42.05</b>	<b>50</b>
<b>Water Supply</b>		
616. Credit for Supply System	25.16	30
621. Credit for Hydrants	3.00	3
631. Credit for Inspection and Flow Testing	7.00	7
<b>640. Credit for Water Supply</b>	<b>35.16</b>	<b>40</b>
<b>Divergence</b>	<b>-0.76</b>	<b>--</b>
<b>1050. Community Risk Reduction</b>	<b>5.22</b>	<b>5.50</b>
<b>Total Credit</b>	<b>91.67</b>	<b>105.50</b>





# Congratulations



**ISO's newest Class 1 community  
Effective February 1, 2022**

# Presentation Overview

- Introduction of ISO Representative

Michael Morash, Manager, ISO Community  
Hazard Mitigation

- Insurance Services Office Presentation
- Report Overview
- **Fire Department Efforts**
- Community Benefit
- Next Steps
- Questions





# Internal Assessment

The Fire Department conducted a self assessment report that outlined areas of focus for recommendations in improvement.

The goal was to retain the 82.41 points and add at least 7.59 points by focusing on the identified areas.



## SEMINOLE COUNTY FIRE DEPARTMENT ISO 1 PROJECT

2020

### ABSTRACT

ISO and staff recommendations of resources needed to obtain and maintain an ISO 1 classification. ISO's Fire Suppression Rating Schedule (FSRS), evaluates four primary categories of fire suppression — emergency communications, fire department, water supply, and community risk reduction. The FSRS references standards established by the National Fire Protection Association (NFPA).

### Submitted To:

Otto Drozd, III, Fire Chief

### Report Prepared By:

Donald Harkins, Assistant Chief  
Meredith Walker, Project Coordinator II



## Fire Department Efforts

Improve rural water supply tanker shuttles and long hose lays.

Identify properties that are 5-7 miles from a fire station and greater than 1,000 ft from a hydrant.

Demonstrate alternative water supply capacities for these properties.

Improve static water supply capabilities and increase tanker complement from 3 to 5.





# Fire Department Efforts

## Increase Training Hours

- Facility Training
- Company Training
- Officer Training
- Hazmat Training

## Pre-Incident Plans

- Develop, implement and conduct pre-incident plans on all properties listed in the ISO batch list.



<p><b>ACCESS POINTS</b></p> <ul style="list-style-type: none"> <li>Alpha Side</li> <li>Other</li> <li>Mark as Complete</li> <li>Entry</li> <li>Gate</li> <li>Kitchen Box</li> <li>Access Roof</li> <li>Access Attic</li> <li>Stairs Interior</li> <li>Stairs, Exit Outside</li> <li>Stairwell Pressurized</li> <li>Stairs Outdoor</li> <li>Elevator</li> </ul>	<p><b>HAZARDS</b></p> <ul style="list-style-type: none"> <li>Special Hazard</li> <li>HazMat Tank Below Ground</li> <li>HazMat Tank Above Ground</li> <li>Water Reactive</li> <li>Poison</li> <li>Radioactive</li> <li>Explosive</li> <li>HazMat Other</li> </ul> <p><b>STRUCTURAL</b></p> <ul style="list-style-type: none"> <li>Roof Only Light Truss</li> <li>Floor Only Light Truss</li> <li>Roof &amp; Floor Light Truss</li> </ul>	<p><b>FIRE SUPPRESSION</b></p> <ul style="list-style-type: none"> <li>FDC Standpipe</li> <li>FDC Sprinkler</li> <li>FDC Standpipe/Sprinkler Combo</li> <li>Standpipe Outlet</li> <li>Standpipe Connection</li> <li>Riser</li> <li>Fire Pump</li> <li>Tank Above Ground, Water</li> <li>Tank Below Ground, Water</li> <li>Drafting Spot</li> </ul> <p><b>ALARMS</b></p> <ul style="list-style-type: none"> <li>Fire Alarm Ctl Panel</li> </ul>	<p><b>UTILITIES</b></p> <ul style="list-style-type: none"> <li>Shunt Trip</li> <li>Elec Shutoff</li> <li>Gas Shutoff</li> <li>Water Shutoff</li> <li>Generator</li> <li>Solar Panel</li> </ul> <p><b>ROOM / AREA</b></p> <ul style="list-style-type: none"> <li>Rm Fire Command</li> <li>Rm Electrical</li> <li>Rm Mechanical</li> <li>Rm System/Server</li> </ul>
--	---	---	--



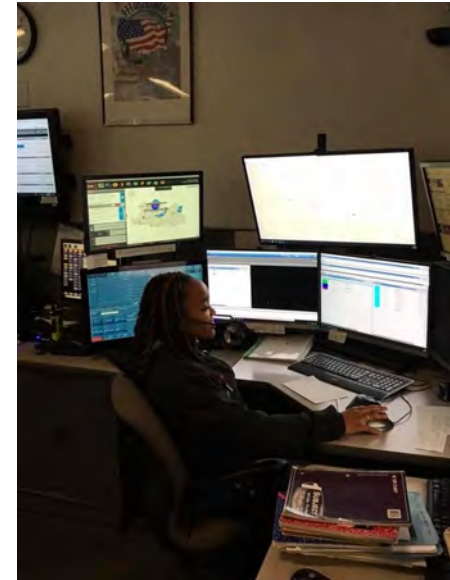
# Fire Department Efforts

## Communications Center

- New CAD system
- Implement Pre-Alerting
- Text to Speech

## Batch List and Occupancy Resurvey

- Fire Prevention conducting inspections on all occupancy's listed on ISO's batch list.
- Goal to lower county's Needed Fire Flow (NFF) for deployment of units.





## Fire Department Efforts

### Aerial Units for Improved Aerial Coverage

- Acquired and placed in service Quint 34
- Ordered Tower 39

### Apparatus Equipment

- Purchased hose clamps for all engines and towers.

### Water Purveyors

- Hydraulic modeling
- Flow test of hydrants not meeting required Needed Fire Flow (NFF).



# Presentation Overview

- Introduction of ISO Representative

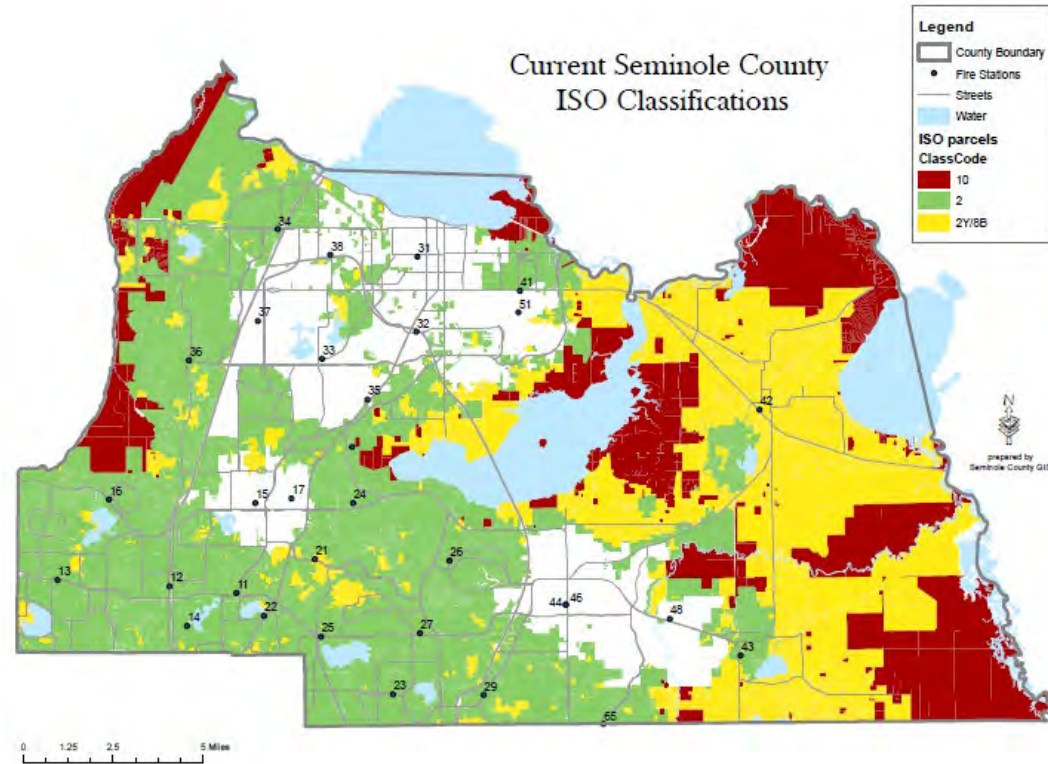
Michael Morash, Manager, ISO Community  
Hazard Mitigation

- Insurance Services Office Presentation
- Report Overview
- Fire Department Efforts
- **Community Benefit**
- Next Steps
- Questions

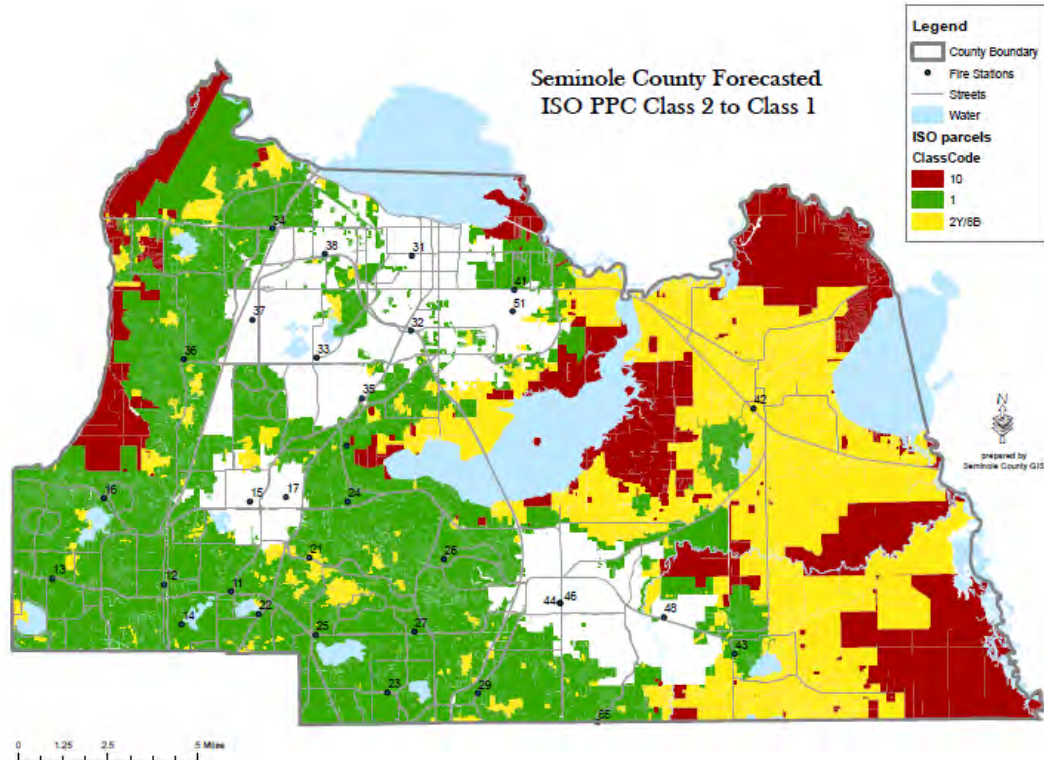




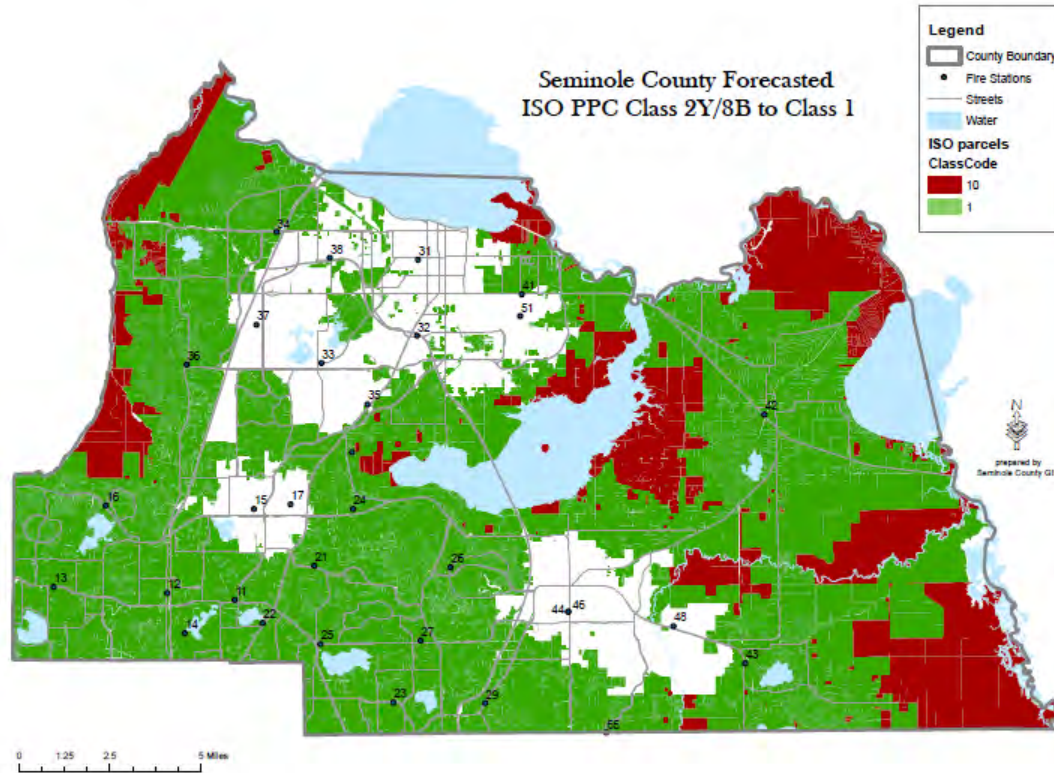
# Community Benefit



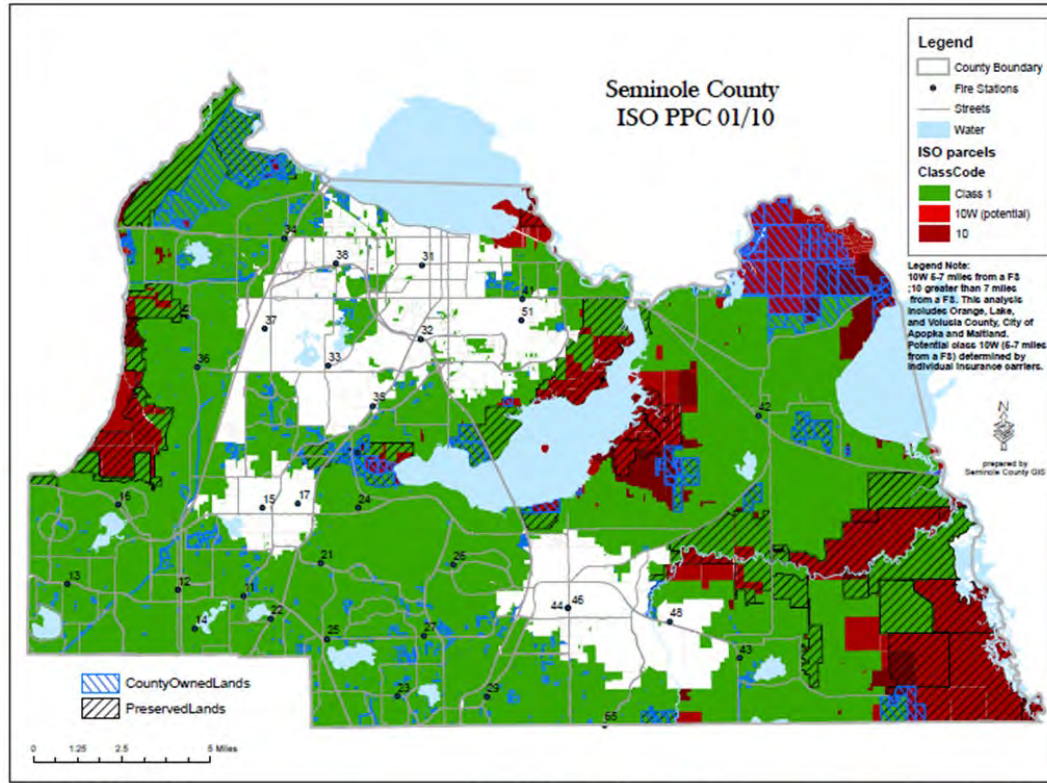
# Community Benefit



# Community Benefit



# Community Benefit







## Fire Department Next Steps

---

ISO will be back every 3 years for another site visit.

Continued focus on training.

Increase number of fire stations to improve NFPA 1710 compliance.

Increase aerial capabilities.

Increase community risk reduction services.



## Property Owners Next Step

Seminole County Government encourages homeowners and business owners to contact their insurance providers to inquire if their premiums will be lowered by the improved classification rating.

Visit [www.seminolecountyfl.gov/ISO](http://www.seminolecountyfl.gov/ISO) for more information.

# Presentation Overview

- Introduction of ISO Representative

Michael Morash, Manager, ISO Community  
Hazard Mitigation

- Insurance Services Office Presentation
- Report Overview
- Fire Department Efforts
- Community Benefit
- Next Steps
- **Questions**

