

SEMINOLE COUNTY LEISURE GUIDE

PARKS AND RECREATION · GREENWAYS AND NATURAL LANDS · SEMINOLE COUNTY PUBLIC LIBRARY
MUSEUM OF SEMINOLE COUNTY HISTORY · EXTENSION SERVICES

FALL
2023

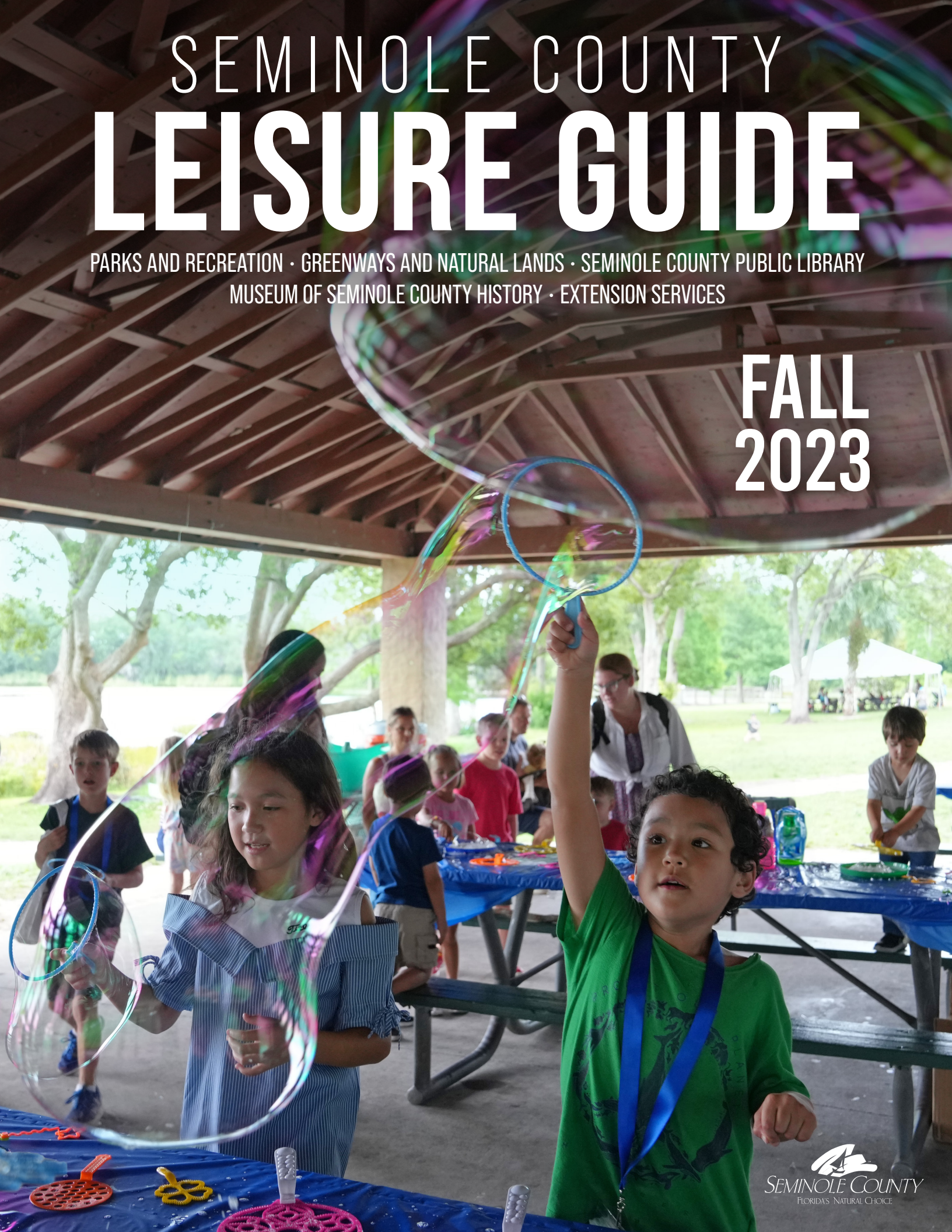




TABLE OF CONTENTS



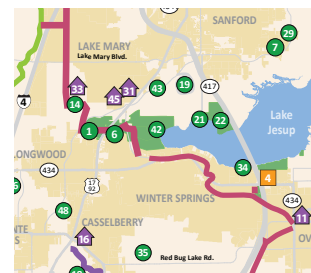
5

Parks & Recreation



6

Greenways & Natural Lands



14 County Map



16 Facility Rentals



18 Programs



4

Leisure Services News



8

Seminole County Public Library



10

Museum of Seminole County History



12

UF/IFAS Extension Services



OUR MISSION
Enriching lives through outstanding cultural, educational, environmental and recreational experiences

OUR VISION
To be a nationally recognized agency for delivering excellence in leisure services

OUR VALUES
Achievement - A sense of community - Conservation of our natural treasures - Good health - Ties to our heritage - A connection to nature - Economic development - Seminole County's future

CONTACT SEMINOLE COUNTY GOVERNMENT

LEISURE SERVICES

Main Office.....	(407) 665-2001
Greenways and Natural Lands.....	(407) 665-2001
UF/IFAS Extension - Seminole County.....	(407) 665-5560
Museum of Seminole County History.....	(407) 665-2489

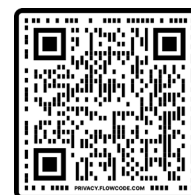
SEMINOLE COUNTY PUBLIC LIBRARY

Central Branch Library.....	(407) 665-1500
East Branch Library.....	(407) 665-1560
North Branch Library.....	(407) 665-1620
Northwest Branch Library.....	(407) 665-1640
West Branch Library.....	(407) 665-1670

PARKS AND RECREATION

Red Bug Lake Park.....	(407) 665-2190
Sanlando Park.....	(407) 665-2100
Seminole County Softball Complex.....	(407) 665-1990
Boombah Soldiers Creek Park.....	(407) 665-2199
Boombah Seminole County Sports Complex.....	(407) 665-2050
Sylvan Lake Park.....	(407) 665-2180

Find disaster preparedness information and sign up for emergency alerts at [PrepareSeminole.org](https://www.prepareseminole.org)

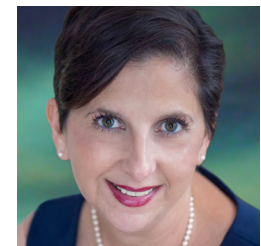


FOLLOW US
[FACEBOOK.COM/SEMINOLECOUNTYLEISURE](https://www.facebook.com/seminolecountyleisure)

BOARD OF COUNTY COMMISSIONERS



Amy Lockhart
Chairman, District 4



Andria Herr
Vice-Chair, District 5



Bob Dallari
Commissioner, District 1



Jay Zembower
Commissioner, District 2



Lee Constantine
Commissioner, District 3





Rolling Hills Park Plans

Engineers and park designers are finalizing the design plans for Rolling Hills Park in Longwood. The former golf course property was purchased by Seminole County in 2018 to be preserved as green space and convert it to a public park.

Along with plans to include recreational features like a playground, fishing pier and walking trail, designers are also planning roadway improvements to slow traffic moving through the park.

Eventually, Rolling Hills Park will provide Seminole County residents with both quiet, natural landscapes and active park amenities to enjoy. Construction is expected to begin in 2024. Learn more at seminolecountyfl.gov/rollinghills.

Health & Wellness Program at Extension

The Health & Wellness Program is back at UF/IFAS Extension Seminole County! New Family & Consumer Sciences Agent Wanda Adorno is excited to coordinate nutrition workshops, fitness challenges, and mental health programs that aim to enhance Seminole County residents' well-being and overall health.

Check out the latest offerings on page 13, including a Stress Management webinar series, Mediterranean diet recipe workshops, and a fall walking challenge.



Volunteers Hop To It

Members of Girl Scout Troop 3050 set out to earn their Silver Award by painting a new hopscotch design at both Sunland Park and Big Tree Park. The playful game adds to the amenities at Sunland, including a playground, picnic area, basketball court, and exercise station.

Seminole County Parks & Recreation welcomes individual and group volunteers to help with special events, park beautification, trail work, mentoring programs, coaching, scorekeeping, and more. Visit seminolecountyfl.gov/parks to learn more.



PARKS AND RECREATION

YOUTH PROGRAMS

Tennis 🏸

Junior Development Program

The Junior Development Program helps beginner players learn the sport! Players will develop a foundation in all tennis strokes as well as athletic skills, coordination, and footwork. Certified tennis professionals will use United States Tennis Association (USTA) teaching methodology and concepts and create a fun-focused learning environment.

Age Groups:

- 3 & 4 year olds (36' court, foam balls, 19" & 21" rackets)
- 5 & 6 year olds (36' court, red compression ball)
- 7 & 8 year olds (60' court, red and orange balls)
- 9 & 10 year olds (60' court, orange and green dot balls)
- 11+ year olds (full court, regular balls and rackets)

Locations: Red Bug Lake Park, Sanlando Park and Sylvan Lake Park

Cost: Weekday Group Classes 4 or 5 week sessions \$36 or \$45

\$36 (Saturday group lessons held one hour per week for 4 weeks)

\$72 (Saturday group lessons held one hour per week for 8 weeks)



Youth tennis at Red Bug Lake Park.

Junior Training Program

The Junior Training Program is for intermediate-level youth players ready to develop skills for playing on a school team or in tournaments. The daily format combines instruction with practice, structured drills, and match play, and follows USTA techniques. Participation is based on ability and may be subject to the tennis pro's approval.

Locations: Red Bug Lake Park, Sanlando Park, and Sylvan Lake Park

Cost: \$52 Month (two hours per week for 4 weeks)

Adaptive Tennis Event 🏸

Join the Posh Rock Tennis Foundation for a youth tennis event open to any adaptive and special needs athletes.

Date: Saturday, October 28

Location: Red Bug Lake Park

Cost: Free. Registration required. Call (407) 665-2190 for more information.

ADULT PROGRAMS

Tennis 🏸

Tennis is the sport of a lifetime and you are never too old to start. Get some cardiovascular exercise while learning skills and meeting other players. Certified professionals make tennis lessons fun for players of all abilities, from beginners to those looking for strategic competition.

Levels:

- **Beginner:** Grips, footwork, forehand and backhand groundstroke's, volleys and serve will be introduced.
- **Intermediate:** Participants will focus on coordinating movement and balance, hitting the ball with purpose and direction, and improvement of their

skill level through strengthening of the fundamentals learned in the beginner level.

- **Advanced:** Emphasis will be on incorporating skills into playing situations. Top spin and slice will be introduced. Drills and playing situations to include ball movement and control of varying ball speeds with shot anticipation.
- **Strategy:** Singles and Doubles. Improve your match results and competitive tennis experience. Doubles to include serve and volley, poaching moving as a team, return strategy and different formations. Learn the different styles of play and find out what type of game you want to perfect!

Locations: Red Bug Lake Park, Sanlando Park, Sylvan Lake Park

Cost: \$72 for 8 weeks, one hour per week

Softball 🏈

Seminole County Softball Complex
Winter League: Registration opens November 1; closes December 15. League play begins January 2.

Red Bug Lake Park
Winter League: Registration opens November 1; closes December 15. League play begins January 8.



GREENWAYS AND NATURAL LANDS



The fishing pier at Geneva Wilderness Area & Ed Yarborough Nature Center.

CLASSES & EVENTS

Snakes of Florida

Join a local expert as she introduces and dispels some of the myths about these often-misunderstood cold-blooded residents! Visit live snakes in the Nature Center, then end with a hike on the trails in search of wild snakes!

Date: Saturday, September 1, 9:00 – 11:00 a.m.

Location: Ed Yarborough Nature Center

Cost: \$8 per person. Registration required.

Ages: 7+ (Children must be accompanied by an adult)

Eco Crafts

Begin the morning with a hike through the woods collecting natural treasures. From the items you collect, we will create a one-of-a-kind nature craft!

Dates: Saturday, October 14, 9:00 – 11:00 a.m. (Sun Art, Ages 5-7)

Saturday, November 4, 9:00 – 11:00 a.m. (Watercolor Plant Art, Ages 8-10)

Location: Ed Yarborough Nature Center

Cost: \$8 per person. Registration required. Children must be accompanied by an adult.

Wildlife Photography Hike

Join adventure photographer TJ Waller as he shares some of his secrets of wildlife photography! This class will cover camera settings, techniques for stationary and moving subjects, approach techniques and more.

Explore the Lake Harney Wilderness Area while practicing your new photography skills.

Date: Saturday, October 28, 7:30 – 10:30 a.m.

Location: Lake Harney Wilderness Area

Cost: \$8 per person. Registration required.

Ages: 18+

Family Fun Campout

This event is tailored for families with children ages 5-13 who want a crash course in camping. Meals included! We will provide tent pitching assistance, a live animal program in the nature center, fishing, hiking, and s'mores over a campfire. This season's campout is Halloween themed, with tent-or-treat, pumpkin decorating, and spooky surprises! Families must bring their own tent.

Date: Saturday, October 28 at 2:00 p.m. – Sunday, October 29 at 9:00 a.m.

Location: Ed Yarborough Nature Center



Native Plant Day & Open House

Stop in to visit the Ed Yarborough Nature Center! Meet and greet with the animal residents and explore the exhibits and displays. Join a knowledgeable guide on a short hike to the fishing pier where you might spy some wild creatures! Hikes begin at 9:30, 10:30 and 11:30 a.m. This season, we will be joined by the Cuplet Fern Chapter of the Florida Native Plant Society.

Date: Saturday, September 9, 9:00 a.m. – 12:00 p.m.

Location: Ed Yarborough Nature Center

Cost: Free. No registration required.

Ages: All ages welcome.

Cost: \$20 per person. Registration required.

Ages: Families with children ages 5-13

Winter Break Eco Adventure Camp

Campers will have fun hiking, setting live traps, fishing, handling animals in the Nature Center, making arts & crafts and trying many other fun activities! Scholarships available. For more information, call (407) 665-2211.

Dates: (4-Day Camp) Tuesday, December 26 – Friday, December 29, 9:00 a.m. – 4:00 p.m.

Location: Ed Yarborough Nature Center

Cost: \$132 per camper. Extended day available (7:30 a.m. – 5:30 p.m. for \$15 per camper).

Ages: 7-12

Orienteering Class

Navigate like a true explorer! Learn the basics of how to read a map, how compasses work, and how to use these tools to find your way. Prove your skills by completing a challenge compass course in the woods! Each participant will receive their own compass to take home.

Date: Saturday, December 9, 9:00 – 11:00 a.m.

Location: Ed Yarborough Nature Center

Cost: \$8 per person. Registration required.

Ages: 7+ (Children must be accompanied by an adult)

GUIDED HIKES

Seminole County is Florida's Natural Choice for a reason! Knowledgeable guides will lead you through a variety of beautiful ecosystems and highlight the special plants and creatures who live there. If you're lucky, you might even get to meet a few of them! Make sure to bring water and bug repellent and wear comfortable closed-toed shoes.

Cost: \$5 per person. Registration required.

Ages: 7+ (Children must be accompanied by an adult)

Saturday, September 23: Owl Prowl
7:30 – 9:30 p.m. at Spring Hammock Preserve

Explore the park after dark in search of owls! Learn how to identify owls by sight and hoots. Hike Rating: Easy

Friday, September 29: Harvest Moon Hike
7:30 – 9:30 p.m. at Chuluota Wilderness Area

Take a break on this Friday night to enjoy the splendor of this month's full moon and search for hidden night creatures. Hike Rating: Moderate

Saturday, September 30: Butterflies and Blooms
10:00 a.m. – 12:00 p.m. at Lake Harney Wilderness Area

ONGOING SERVICES

Birthday Parties

Create a birthday party experience your child will never forget! A trained staff member will welcome your party guests, present an exciting live animal program and take the group for a hike on our 180-acre property. You will have time in the center for exploration and to enjoy your refreshments. Email Natalie at nswanson@seminolecountyfl.gov to coordinate times and availability.

Location: Ed Yarborough Nature Center, 3485 CR-426, Geneva

Cost: \$170 includes 3-hour facility rental and Natural Lands host.

Special Events and Hikes

Groups from school-aged scouts to adult social or neighborhood associations can book a **guided private hike** in the Geneva Wilderness



Hikers searching for birds on Seminole County trails.

Join a local expert in search of fragrant colorful flowers and the many pollinators that visit them. Hike Rating: Easy

Saturday, October 7: Fall Foraging Hike
8:30 – 10:30 a.m. at Geneva Wilderness Area

Learn to identify seasonal wild edible plants while strolling through diverse habitats. Hike Rating: Easy

Saturday, October 14: Morning Birding Hike
7:30 – 9:30 a.m. at Lake Jesup Wilderness Area

Join an expert birder as you search for feathered friends by sight and sound while meandering through the floodplain of Lake Jesup. Hike Rating: Easy

Saturday, October 21: Reptile Ramble
8:00 – 10:00 a.m. at Black Bear Wilderness Area

Search for scaly creatures during this exciting hike. Regular sightings include alligators, turtles, and snakes. Hike Rating: Moderate

Saturday, November 18: Morning Birding Hike
7:30 – 9:30 a.m. at Black Bear Wilderness Area

Along with an expert birder, learn how to spot many species of wading birds as you hike along river and swamp. Hike Rating: Moderate

Pavilions and Campsite Rentals

Save yourself the trouble of party prep and cleanup and reserve a pavilion at a Seminole County Park. Covered pavilions are available to rent at eight different locations. With restrooms and playgrounds close by and a pretty park setting, pavilions are perfect for your next group get-together, family party, or BBQ.

Or, spend a night under the stars camping at one of four Seminole County Parks. Hike in to a tucked-away campsite on the Black Bear Wilderness Area trail loop, or bring the comforts of home to a drive-in site at Lake Mills Park.

Plan a fall group camping trip with your scout troop or organization at Geneva Wilderness Area, which also includes a large pavilion. See details on page 17.



SEMINOLE COUNTY LIBRARY



Young readers enjoying a Little Blue Truck storytime.

YOUTH PROGRAMS

Puppet-Palooza (For Families) ☆

Everyone loves a puppet show! Our team of Youth Services Librarians are putting on special Fall and Winter puppet performances at a Library branch near you.

West Branch (Longwood)

Saturday, November 11, 11:00 a.m.

East Branch (Oviedo)

Saturday, November 18, 11:00 a.m. or 2:00 p.m.

North Branch (Sanford)

Saturday, December 2, 11:00 a.m.

Northwest Branch (Lake Mary)

Saturday, December 9, 11:00 a.m. or 2:00 p.m.

Central Branch (Casselberry)

Saturday, December 16, 11:00 a.m.

Free. No registration required.

Additionally, the puppet fun continues over Winter Break!

Central Branch (Casselberry)

Wednesday, December 27, 1:00 p.m.: The Smelly Sock Theater Presents Mixed Up Fairytales

North Branch (Sanford)

Friday, December 29, 1:00 p.m.: Stevens Puppets Presents “Rumplestiltskin”

West Branch (Longwood)

Wednesday, January 3, 1:00 p.m.: Stevens Puppets Presents “Beauty and the Beast”

Free. No registration required.

1000 Books Before Kindergarten: Kickoff Celebration ☆

(For Preschoolers and Children not yet in Kindergarten)

Learn more about “1000 Books Before Kindergarten,” a self-paced reading journey you can share with your child at home. The celebration features a short storytime with stations and activities that promote early literacy and kindergarten readiness.

West Branch (Longwood)

Monday, October 16, 4:00 – 5:00 p.m.

Free. No registration required.

The Great Pumpkin Paint-Off for Teens ☆

(Exclusively for ages 13+)

Paint a pumpkin to look like a children’s book character. Pumpkins will be displayed throughout the library in a scavenger hunt for kids! The teen who paints the most popular pumpkin at each branch receives a treat (\$10 cash).

Central Branch (Casselberry)

Wednesday, October 4, 6:00 – 7:30 p.m.

West Branch (Longwood)

Monday, October 9, 6:00 – 7:30 p.m.

North Branch (Sanford)

Tuesday, October 10, 5:30 – 7:00 p.m.

Northwest Branch (Lake Mary)

Wednesday, October 11, 3:30 – 5:00 p.m.

East Branch (Oviedo)

Tuesday, October 24, 6:00 – 7:30 p.m.

Free. Registration required – space is limited.

DIY Faux Stained Glass ☆

Create a “stained glass style” effect on an acrylic sheet using glue and glass-paint! Hold your masterpiece up to a window during the daytime and watch it catch the light. Program does not use real glass.

Northwest Branch (Lake Mary)

Monday, October 2, 6:00 – 7:30 p.m.

Central Branch (Casselberry)

Tuesday, October 10, 6:00 – 7:30 p.m.

East Branch (Oviedo)

Wednesday, October 18, 6:00 – 7:30 p.m.

East Branch (Oviedo)

Wednesday, November 8, 6:00 – 7:30 p.m.

North Branch (Sanford)

Wednesday, November 15, 6:00 – 7:30 p.m.

West Branch (Longwood)

Tuesday, November 28, 6:00 – 7:30 p.m.

Free. Registration required; space is limited.

Hero Street Invasion: Library Takeover! (For Families) ☆

Heroes are taking over the library and the street outside! Kids will enjoy:

- Hero-themed stories, literacy activities, and crafts
- Photo ops with their favorite costumed superheroes and the Little Blue Truck!
- Meet and greets with the real-life heroes of the Seminole County Fire Department and the Sanford Police & Fire Departments
- An outdoor bounce house, miniature therapy horses, a face-painting station, and games courtesy of Ladies 327

North Branch (Sanford)

Saturday, September 30, 10:00 a.m. – 1:00 p.m.



ADULT PROGRAMS

The Truth About True Crime ☆

Can you crack the case? Learn how forensic investigations are used to solve crime cases in this presentation by Jaqueline Grossi, Senior Crime Analyst with the Seminole County Sheriff’s Office.

Northwest Branch (Lake Mary)

Monday, September 18, 5:30 – 6:30 p.m.

East Branch (Oviedo)

Thursday, October 19, 5:00 – 6:00 p.m.

North Branch (Sanford)

Friday, October 27, 2:30 – 3:30 p.m.

Free. No registration required.

Spooky History of Seminole County ☆

Be afraid! Be very afraid! Learn about the facts and fictions of Seminole County’s most famous ghost stories from Bennett Lloyd, Coordinator of the Museum of Seminole County History.

West Branch (Longwood)

Monday, October 2, 6:30 – 7:30 p.m.

North Branch (Sanford)

Monday, October 16, 6:30 – 7:30 p.m.

Free. No registration required.

Not So Spooky-ween ☆

(Activities geared toward ages 3 & up; Families welcome)

This afternoon will be a treat! We’ll listen to some not-so-spooky stories, do some special crafts together, and learn how to do the Monster Mash dance. Families will not be scared or spooked.

North Branch (Sanford)

Saturday, October 28, 3:00 – 4:00 p.m.

Free. No registration required.

Thankful Books ☆ (Activities geared toward ages 5 & up; Families welcome)

Join us for stories about kindness, giving thanks, and celebrating together with family. Then kids will make “Thankful Books” using paper bags, plus a variety of craft supplies and special embellishments. Participants can draw pictures of what they are thankful for or bring photos from home to add to their Thankful Books.

Central Branch (Casselberry)

Monday, November 20, 4:00 – 5:00 p.m.

Free. No registration required.

Little Blue Truck at the Library ☆

(Activities geared toward ages 2-7; Families welcome)

Everyone’s favorite truck is coming to the West Branch Library! Enjoy a 10:00 storytime featuring Little Blue Truck’s adventures, followed by a variety of themed activities!

West Branch (Longwood)

Saturday, December 2, 10:00 – 11:30 a.m.

Free. No registration required.

Squishmallow Party ☆

(Geared towards children 12 & under; Families welcome)

East Branch Library (Oviedo)

Monday, December 11, 5:30 – 7:00 p.m.

Kids can bring their Squishmallow or other favorite stuffed animal friend, and get ready to party! This event features themed games, crafts, and fun activities involving marshmallows.

Free. No registration required.

Paint Afternoon/Evenings

Come and create your masterpiece! Our instructor will teach you step-by-step, and all painting materials will be provided.

Northwest Branch (Lake Mary)

Saturday, October 14, 1:00 – 3:00 p.m.

Central Branch (Casselberry)

Wednesday, November 15, 5:30 – 7:30 p.m.

West Branch (Longwood)

Saturday, November 18, 2:00 – 4:00 p.m.

North Branch (Sanford)

Tuesday, November 28, 5:30 – 7:30 p.m.

\$10 materials fee. Registration required; space is limited.

Port of Sanford: The Gateway to Middle Florida ☆

Travel back to the 19th century and visit Mellonville (Sanford), Florida. Richard Cronin of the Central Florida Railroad Museum will share the history of this important steamship port and railroad hub. There will be a book sale and author signing after the talk.

North Branch (Sanford)

Friday, November 3, 10:30 – 11:30 a.m.

Free. No registration required.

Walk and Talk Books ☆

Love to read books and walk? Meet us at the Central Branch (Casselberry) to walk on the Casselberry Greenway Trail and discuss your favorite or latest read from the monthly genre. Meets on the 2nd Monday of the month from October – May, 9:00 – 10:00 a.m.

- October 9: Horror
- November 13: Western
- December 11: Holidays
- January 8: Science Fiction

Free. No registration required.

Jam Session ☆

Come one, come all, and bring your guitars, ukuleles, mandolins – whatever stringed instrument strikes your fancy. Connect with other musical enthusiasts, play together, and even try your hand at musical improv.

East Branch (Oviedo)

Tuesday, December 5, 5:30 – 7:30 p.m.

Free. No registration required.



MUSEUM OF SEMINOLE COUNTY HISTORY

EXHIBITS



Indisputable Fact! When We Were Wrong

Science is a process by which we evaluate the observable world in order to understand ourselves and our universe, and our conclusions can change! View some of the “Indisputable Facts” we believed as a society not long ago. From the starlit sky to the continents beneath our feet, and even into the inner workings of our own bodies, see how our understanding of the world around us has shifted as we continually observe and reexamine it.

Dates: Through November 11

Cost: General Admission



St. Lucia

Come enjoy the Museum’s annual festive look at the winter cultural practices of Swedish immigrants to Central Florida from 1870 – 1900. Their ongoing legacy is evident in families, placenames, and business establishments still seen locally to this day! Check out traditional and modern Christmas decorations of Northern Europe arrayed in our Changing Exhibits Room.

Dates: December 1 – 31

Cost: General Admission

MUSEUM RESOURCES

Tours and Programs

Guided tours of the Museum are available at no additional charge with a reservation, or daily visitors are welcome to explore the Museum at their leisure.

The Museum has curriculum-based special programs for schools, homeschool groups, and other organizations, from pottery workshops highlighting native cultures to Industrial Period cattle branding. School groups can take a field trip to the Museum or host programming in-school. Call the Museum at least two weeks in advance of your requested date to schedule a program.

Hours: Tuesday - Saturday, 10:00 a.m. - 5:00 p.m.

Museum Admission: \$3 for adults, \$1 for students, seniors, and military, plus tax.
Children under 4 years get in for free.

Research

The Museum has an extensive collection of reference materials freely available to the public during regular scheduled museum hours. Reference materials include local newspapers from 1908 forward, assorted City directories, reference books and some Seminole family histories.

Call to make a research appointment. Admission is waived for researchers with an appointment.



Reenactors make history come alive during a demonstration at the Museum.

EVENTS

Museum Week

The Museum of Seminole County History will be free and open to the public all week to celebrate the role museums play in preserving and interpreting our local cultural history.

Dates: September 19 – 23

Cost: Free

Cuplet Fern Native Plant Sale

Gardeners can find an array of native Florida plants for sale in the Museum Courtyard and ask gardening questions with volunteers from the Cuplet Fern Chapter of the Florida Native Plant Society.

Date: Saturday, October 14, 8:30 a.m. – 12:00 p.m.

Cost: Free

Haunted Tours

Borrow a ghost hunting device or bring your own and join the Museum for a tour in its haunted halls. Tour guides will reveal strange and spooky occurrences from the Museum’s

files and from their own experiences in the dark rooms of the Museum, bedecked for Halloween! Reservations recommended.

Dates: Thursday, October 26 – Saturday, October 28, 6:00 – 10:00 p.m.

Cost: \$5 per person. All proceeds benefit the Seminole County Historical Society.

St. Lucia Festival

The Annual St. Lucia Festival returns this year on Saturday, December 9! The Museum hosts carols, a procession, traditional games, and our famous array of Swedish desserts!

Date: Saturday, December 9, 12:00 – 4:00 p.m.

Cost: Free, Donations Accepted

Menendez Spanish Colonial Encampment

In September of 1566, between quelling mutinies and rebuffing the hostilities of native Floridians, Pedro Menendez de Aviles and his men paddled up the St. Johns River armed with crossbows to try and find its origin point. Reenactors demonstrate the difficulties

(both practical, cultural, and diplomatic) of mounting a Spanish exploratory expedition through the wilds of Florida in 1566.

School Day: Friday, September 22, 9:00 a.m. – 1:30 p.m. Educators may reserve a timeslot in advance (9:00 a.m., 10:30 a.m., 12:00 p.m.). All ages, public, private, and homeschool groups welcome!

Public Day: Saturday, September 23, 10:00 a.m. – 4:00 p.m.. Reenactors will demonstrate in camp throughout the day. Signal gun firings at 10:00 a.m., 12:00 p.m., and 2:00 p.m., with arms drills immediately following.

Cost: Free



Menendez Spanish Colonial Encampment reenactment.



UF/IFAS EXTENSION SERVICES

Registration is required for all workshops and events.
Register at seminole-extension.eventbrite.com.

4-H PROGRAMS

Seminole County 4-H

4-H is the UF IFAS Extension's youth development program as part of Florida 4-H. Inspiring kids through hands-on learning experiences guided by 4-H mentors, youth ages 5 – 18 are welcome to participate in 4-H Clubs, camps, educational events, and career/leadership opportunities throughout the year.

4-H Clubs are led by adult volunteers at times and locations throughout the community, focusing on different skills throughout the year. Find out more about 4-H by visiting <http://www.seminolecountyfl.gov/4-H>

Florida 4-H Food Challenge Workshop

Teams prepare a dish using randomly assigned ingredients and equipment during this kitchen challenge!

Location: UF/IFAS Extension Seminole County, 250 W County Home Rd, Sanford

Date: Tuesday, December 5, 6:00 – 7:30 p.m.

Cost: Free

County 4-H Club

Interested in checking out a 4-H club? Join us



on Tuesday evenings from 6:00 to 7:30 p.m. once a month for fun, friends, and learning.

This year, 4-H Club will focus on a different 4-H “project,” or hobby each month.

Open to ages 8-18 (as of September 1, 2023).

Ages 5-7 welcome with parent/guardian accompaniment.

Location: UF/IFAS Extension Seminole County, 250 W County Home Rd, Sanford

Dates:

- September 5: Teambuilding and Games
- October 3: All About Bats
- November 7: Fun with Food
- December 5: Winter Crafts
- January 2: Science Adventures

Cost: \$20 for 5 Classes

ONGOING SERVICES

Master Gardener Help Desk

A UF/IFAS trained Master Gardener Volunteer is on duty most weekdays from 9:00 a.m. – Noon and 1:00 – 4:00 p.m. to answer your questions and solve your gardening or landscape problems. You can call, email or come into our office and we will give you free one-on-one help and consultation. or more details call (407) 665-5550 or email mastergardener@seminolecountyfl.gov

Soil pH Test Drop off Service

Bring in a soil sample from your yard (one cup full) to the UF/IFAS office, anytime Monday through Friday between 8:00 a.m. – 4:00 p.m. Take samples from 5 – 10 areas of the yard, mix them up and scoop one cup for your sample. A Master Gardener will let you know your results within a week. For more details call (407) 665-5550 or email mastergardener@seminolecountyfl.gov

Cost of test: \$2 per sample

Pesticide Testing, Licensing, and CEUs

Pesticide license exams are offered on the fourth Wednesday of every month from 8:30 a.m. – 12:30 p.m. online and by appointment only. Visit pesticideexam.ifas.ufl.edu to obtain a voucher and schedule your exam. Contact Morgan Pinkerton at morgan0402@ufl.edu with questions. For pesticide CEUs, visit seminole-extension.eventbrite.com or facebook.com/UFIFASeminoleCo for upcoming events.

WORKSHOPS

First Fridays with Florida First Detector

In this monthly Zoom webinar from 12:00 to 1:00 p.m., learn about invasive species in Florida. An invasive species is a non-native species causing harm like economic losses, environmental damage, or human/animal health hazards. The webinars are open to everyone and applicable to professionals and residents alike!

Dates:

September 1: Invasive Species in Florida and Pathways

November 3: Invasive Whiteflies, Aphids, Psyllids, and More

December 1: Invasive Hornets, Wasps, and Ants

January 5: Invasive Plant Feeding Mites

Cost: Free

Intro to Hydroponics: Gardens to Greenhouse

From gardens to greenhouses, come learn about the basics of hydroponics and how to try it out to grow plants at home.

Location: UF/IFAS Extension Seminole County, 250 W County Home Rd, Sanford

Date: Friday, September 8, 1:00 – 3:00 p.m.

Cost: \$35 with materials, \$10 without

Spores and More Mushroom ID Hike

During this nature hike on one of Seminole County's trails, participants will sharpen their mushroom identification skills. Collect mushrooms while utilizing mushroom identification books for our area. Be ready for rough, muddy terrain, insects, and sun. Bring water.

Location: Ed Yarborough Nature Center, 3543 County Rd 426, Geneva

Date: Saturday, September 23, 9:00 a.m. - 12:00 p.m.

Cost: \$10

Master Gardener Volunteer Info Session

Master Gardener volunteers go through extensive annual training so they can provide

gardening knowledge to the residents of Seminole County. Learn more about the training and volunteer program and talk with current volunteers before applying during this volunteer information session.

Location: UF/IFAS Extension Seminole County, 250 W County Home Rd, Sanford

Date: Friday, October 13, 2:00 – 3:30 p.m.

Cost: Free

Bugging Out! Insects Around You and Starting A Collection

Are you always wondering to yourself, “what’s that bug?” Have you considered starting an insect collection? In this class for adults, learn about the major insect orders in Florida, practice basic insect ID, discover how to collect and pin insects, and explore insects as art. Participants will go home with insect art and a better understanding of the creepy crawlies in their garden.

Location: UF/IFAS Extension Seminole County, 250 W County Home Rd, Sanford

Date: Friday, October 28, 9:30 a.m. - 12:00 p.m.

Cost: \$10

From Tension to Tranquility: Stress Management Program

This four-session Zoom webinar program will help participants recognize stressors, practice coping techniques to release stress, and learn to live in the present moment through mindfulness.

Dates:

Tuesdays: October 3, 10, 17, and 24, 7:00 – 8:00 p.m.

Wednesdays, October 4, 11, 18, and 25, 12:00 – 1:00 p.m.

Cost: \$25

Med Instead of Meds: Mediterranean Diet Instead of Medications

Discover the benefits of a Mediterranean-inspired diet to avoid long-term health issues and medications. Learn Med tips, life hacks, and recipes that will help you eat the Med

way every day. This six-week program includes food demonstrations during each class.

Location: UF/IFAS Extension Seminole County, 250 W County Home Rd, Sanford

Dates: Thursdays, October 5 through November 9, 2:00 – 4:00 p.m.

Cost: \$45

Let's Walk Florida

This is a virtual educational program designed to help Floridians achieve and maintain health through physical activity. Register for the online kickoff session, then attend in-person meetings to check-in on your progress.

Dates:

Online Kick-Off: Monday, September 25, 12:00 – 12:30 p.m.

In-Person at Sanford Senior Center: Monday, September 25, 6:00 p.m.

Online Sessions: Mondays, October 2-30, 12:00 – 12:30 p.m.

Last Session at Red Bug Lake Park: Monday, November 6, 6:00 p.m.

Cost: Free

Food Preservation

Discover the techniques and tips to design and create a masterpiece of edible art while learning how to make fresh cheese for your charcuterie board.

Location: UF/IFAS Extension Seminole County, 250 W County Home Rd, Sanford

Dates:

Thursday, September 21, 2:00 – 4:00 p.m.

Thursday, December 7, 10:00 a.m. - 12:00 p.m.

Thursday, December 14, 2:00 – 4:00 p.m.

Cost: \$25

Water Bath Canning

Learn about the basics of water bath canning with vegetables with this in-person instructional class.

Location: UF/IFAS Extension Seminole County, 250 W County Home Rd, Sanford

Dates:

Tuesday, September 19, 2:00 – 4:00 p.m.

Tuesday, December 19, 10:00 a.m. - 12:00 p.m.

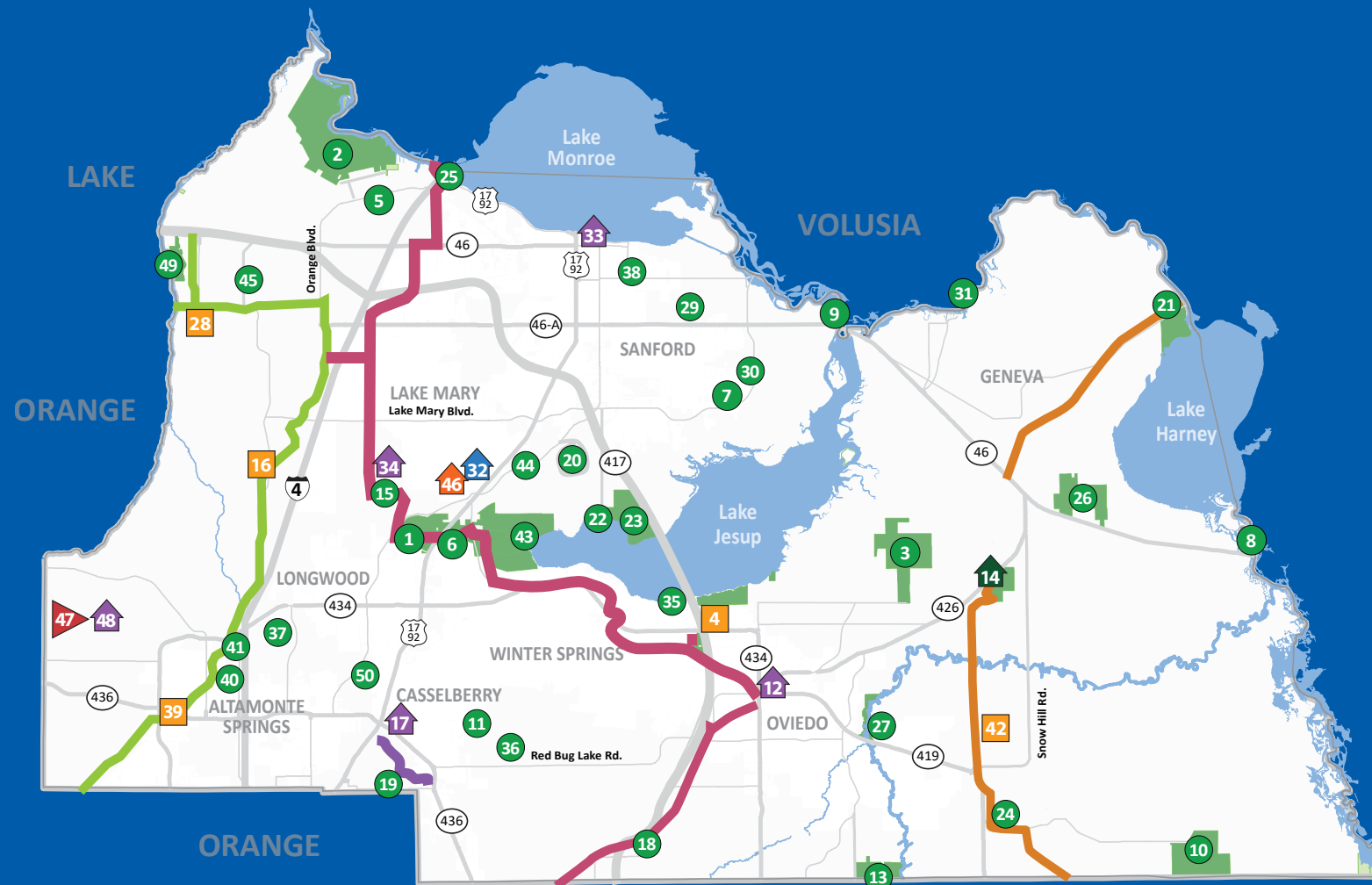
Cost: \$25

REGISTER ONLINE AT [SEMINOLECOUNTYFL.GOV/EXTENSION](https://seminolecountyfl.gov/extension)





COUNTY MAP



LEGEND

Facilities

- Libraries
- Parks
- Museum
- Trailhead
- Extension Services
- Golf

Trails

- Cross Seminole Trail
- Flagler Trail
- Kewannee Trail
- Seminole Wekiva Trail

Icons

- | | | | | | |
|----------------|-----------|-------------|----------------|------------|-------------------|
| Accessible | Biking | Canoe/Kayak | Golf | Pavilion | Softball/Baseball |
| Athletic Field | Boat Ramp | Equestrian | Hiking/Walking | Playground | Tennis |
| Basketball | Camping | Fishing | Meeting Space | Restrooms | Volleyball |

- Big Tree Park and Trailhead**
Open 8 a.m. - Sunset
761 General Hutchison Parkway, Longwood
- Black Bear Wilderness Area**
Open daylight hours
5298 Michigan Avenue, Sanford
- Black Hammock Wilderness Area**
Open daylight hours
3276 Howard Avenue, Geneva
- Black Hammock Trailhead**
Open daylight hours
1571 E. State Road 434, Winter Springs
- Bookertown Park**
Open 8 a.m. - Sunset
4640 Richard Allen Street, Sanford
- BOOMBAH Soldiers Creek Park**
Open Mon - Fri, 11 a.m. - 10 p.m., Sat 8 a.m. - 10 p.m., Sun 8 a.m. - 8 p.m.
2400 State Road 419, Longwood
- BOOMBAH Sports Complex**
Open Mon - Sat 8 a.m. - 10 p.m., Sun 8 a.m. - 10 p.m.
3450 E. Lake Mary Boulevard, Sanford
- C. S. Lee Park**
Open 24 hours
4600 East State Road 46, Geneva
- Cameron Wight Park**
Open 24 hours
5502 Old Geneva Road, Sanford
- Chuluota Wilderness Area**
Open daylight hours
3895 Curryville Road, Chuluota
- Deer Run Park (under construction)**
300 Daneswood Way, Casselberry
- East Branch Library**
Open Mon - Thurs 9 a.m. - 8 p.m., Fri & Sat 9 a.m. - 5 p.m., Sun 1 p.m. - 5 p.m.
310 Division Street, Oviedo
- Econ River Wilderness Area**
Open daylight hours
3795 Old Lockwood Road, Oviedo
- Geneva Wilderness Area and Ed Yarborough Nature Center**
Open daylight hours
3501 County Road 426, Geneva
- Greenwood Lakes Park**
Open 8 a.m. - 9 p.m.
660 Greenway Boulevard, Lake Mary
- Jones Trailhead**
Open daylight hours
2993 Markham Woods Road, Longwood
- Jean Rhein Central Branch Library**
Open Mon - Thurs 9 a.m. - 8 p.m., Fri & Sat 9 a.m. - 5 p.m., Sun 1 p.m. - 5 p.m.
215 N. Oxford Road, Casselberry
- Jamestown Park**
Open 8 a.m. - 9 p.m.
2135 South Street, Oviedo
- Kewannee Park**
Open 8 a.m. - Sunset
1505 Kewannee Trail, Casselberry
- Lake Dot Park**
Open daylight hours
100 Lake Dot Drive, Sanford
- Lake Harney Wilderness Area and St. Johns River Trailhead**
Open daylight hours
2395 Osceola Fish Camp Road, Geneva
- Lake Jesup Park**
Open 24 hours
5951 South Sanford Avenue, Sanford
- Lake Jesup Wilderness Area**
Open daylight hours
5951 South Sanford Avenue, Sanford
- Lake Mills Park**
Open 8 a.m. - Sunset
1301 Tropical Avenue, Chuluota
- Lake Monroe Wayside Park**
Open 24 hours
4150 Northwest U. S. Hwy 17/92, Sanford
- Lake Proctor Wilderness Area**
Open daylight hours
920 State Road 46, Geneva
- Little Big Econ Canoe Launch**
Open daylight hours
3799 Willingham Road, Oviedo
- Markham Trailhead and Mountain Bike Skills Course**
Open daylight hours
8515 Longwood Markham Road, Sanford
- Midway Park**
Open daylight hours
2045 Hurston Avenue, Sanford
- Moore's Station Road Fields**
Use by reservation only.
Open 8 a.m. - 8 p.m.
841 Cameron Avenue, Sanford
- Mullet Lake Park**
8 a.m. - Sunset
2368 Mullet Lake Park Road, Geneva
- Museum of Seminole County History**
Open Tues - Sat, 10 a.m. - 5 p.m.
300 Eslinger Way, Sanford
- North Branch Library**
Open Mon - Thurs, 9 a.m. - 8 p.m., Fri & Sat 9 a.m. - 5 p.m., Sun 1 p.m. - 5 p.m.
150 N Palmetto Avenue, Sanford
- Northwest Branch Library**
Open Mon - Thurs, 9 a.m. - 8 p.m., Fri & Sat 9 a.m. - 5 p.m., Sun 1 p.m. - 5 p.m.
580 Greenway Boulevard, Lake Mary
- Overlook Park**
Open daylight hours
1998 Spring Avenue, Oviedo
- Red Bug Lake Park**
Open Mon - Fri, 8 a.m. - 10 p.m., Sat & Sun 8 a.m. - 8 p.m.
3600 Red Bug Lake Road, Casselberry
- Rolling Hills Community Park**
(under construction)
1749 Art Hagen Place, Longwood
- Roseland Park**
Open 8 a.m. - 9 p.m.
1898 Roseberry Lane, Sanford
- San Sebastian Trailhead**
Open daylight hours
371 San Sebastian Prado, Altamonte Springs
- Sanlando Park**
Open Mon - Fri 8 a.m. - 10 p.m., Sat & Sun 8 a.m. - 8 p.m.
401 W Highland Street, Altamonte Springs
- Seminole County Softball Complex**
Open Mon - Fri, 11 a.m. - 10 p.m., Sat 8 a.m. - 10 p.m., Sun 8 a.m. - 8 p.m.
2200 North Street, Altamonte Springs
- Snow Hill Trailhead**
Open daylight hours
3290 Snow Hill Road, Chuluota
- Spring Hammock Preserve**
Open 8 a.m. - Sunset
State Road 419, Longwood
- Sunland Park**
Open 8 a.m. - 10 p.m.
180 Collins Drive, Sanford
- Sylvan Lake Park & Sports Training Center**
Open Mon - Fri, 8 a.m. - 10 p.m., Sat & Sun 8 a.m. - 8 p.m.
845 Lake Markham Road, Sanford
- UF/IFAS Extension Seminole County Services & Teaching Gardens**
Open Mon - Fri, 8 a.m. - 5 p.m.
250 West County Road, Sanford
- Wekiva Golf Club**
Open 6 a.m. - 7 p.m.
4100 Wekiva Club Ct, Longwood
- West Branch Library**
Open Mon - Thurs, 9 a.m. - 8 p.m., Fri & Sat 9 a.m. - 5 p.m., Sun 1 p.m. - 5 p.m.
245 N. Hunt Club Boulevard, Longwood
- Wilson's Landing Park**
Open daylight hours
379 Malekian Trail, Sanford
- Winwood Park**
Open 8 a.m. - 9 p.m.
931 Morse Street, Altamonte Springs



FACILITY RENTALS

COURTS & FIELDS

Athletic Fields

Moore Station Road Field, Red Bug Lake Park, Sylvan Lake Park, Soldiers Creek, Seminole County Softball Complex, Seminole County Sports Complex

(Turf fields may be closed for repairs or sodding)

8:00 a.m. – 5:00 p.m.: \$30.00/hr

5:00 – 10:00 p.m.: \$40.00/hr

Basketball Courts

Red Bug Lake Park, Sanlando Park

Walk-on play is free of charge; priority is given to users with a reservation. Fees for basketball court usage are only charged for reservations made in advance. Fees are due in advance of rental.

Court Fee: \$6.00/hr per court

Racquetball Courts

Red Bug Lake Park, Sanlando Park, Sylvan Lake Park

Court Fee: \$6.00/hr per court

Balls: \$3.00 per can

Roller Hockey Courts

Greenwood Lakes Park

Open-skate is free of charge; priority use is given to reserved users. Rees for rink usage are charged for reservations made in advance. Fees are due at time of reservation. Reservations and payment can also be made at Sylvan Lake Park.

8:00 a.m. – 5:00 p.m.: \$16.00/hr

5:00 – 10:00 p.m.: \$32.00/hr

Pickleball Courts

Red Bug Lake Park

8:00 a.m. – 5:00 p.m.: \$4.00/hr per court

5:00 – 10:00 p.m.: \$6.00/hr per court



Seminole County Softball Complex

Sand Volleyball Courts

Red Bug Lake Park

Walk-on play is available free of charge; priority is given to reserved users. Fees for court usage are only charged for reservations made in advance. Fees are due in advance of rental.

8:00 a.m. – 5:00 p.m.: \$30.00/hr

5:00 – 10:00 p.m.: \$40.00/hr

Pentaque Courts

Sylvan Lake Park

Courts may be reserved with the rental of an adjacent pavilion. Courts can be used for tournaments or general play. For more information on usage, please contact Sylvan Lake Park at (407) 665-2180.

Tennis Courts

Greenwood Lakes Park, Red Bug Lake Park, Sanlando Park, Sylvan Lake Park

Courts can be reserved an advance at all parks; reservations for Greenwood Lakes Park must be made and paid for at Sylvan Lake Park.

Court Fee 8:00 a.m. – 5:00 p.m.: \$4.00/hr

Court Fee 5:00 p.m. – 10:00 p.m.: \$6.00/hr

Ball Machine Courts*: \$11.00/hr

* Red Bug Lake Park, Sanlando Park, and Sylvan Lake Park only

**Check Availability or Reserve Online at
RECREATION.SEMINOLECOUNTYFL.GOV**

Listed fees do not include applicable sales tax



CAMPING

Group Camping

\$30.00/night

Mullet Lake Park

Lake Mills Park

Geneva Wilderness Area

Group camping site available for up to 40 people; includes a large pavilion, restrooms and barbecue grill. For more information, please call the Geneva Wilderness Area at (407) 665-2211.

OTHER FACILITIES

Pavilions

Bookertown Park, Geneva Wilderness Area, Greenwood Lakes Park, Kewannee Park, Lake Mills Park, Red Bug Lake Park, Sanlando Park, Wilson's Landing Park, Winwood Park

Large Pavilions: \$60.00/half day, \$100.00/full day

Small Pavilions: \$40.00/half day, \$60.00/full day

Large Pavilion at Geneva Wilderness Area includes:

Barbeque Grill, Smoker and restrooms

For more information, please call the Geneva Wilderness Area at (407) 665-2211



Geneva Wilderness Area

Meeting Rooms

Seminole County Softball Complex, Soldier's Creek Park, Seminole County Sports Complex

\$16.00 - \$32.00/hr, based on facility.

Contact your desired location for more information.

PARTICIPANT & SPECTATOR CODE OF CONDUCT

1. Demonstrate good sportsmanship. Always be respectful toward players, coaches and officials.
2. Act appropriately; do not taunt or disturb other fans; Enjoy the game together.
3. Cheer in a positive manner and encourage fair play.
4. Be supportive after the game - win or lose. Recognize good effort, teamwork and sportsmanship.
5. Follow facility guidelines, help keep the facility safe and clean, be respectful of the facility at all times.

Primitive Camping

\$15.00/night

Geneva Wilderness Area

Campsites are hike-in only with NO vehicle access

Lake Mills Park and Mullet Lake Park

Campsites are drive-in with one vehicle per campsite and overflow parking available.

Black Bear Wilderness Area

Hike-in only primitive campsite for up to 4 people; campsite is approximately 3 miles from parking. No bathrooms or running water.

Ed Yarborough Nature Center

Geneva Wilderness Area

The Ed Yarborough Nature center offers a unique venue to host meetings, birthday parties, programs or retreats for up to 40 guests. Surrounded by 180 acres of Florida's natural beauty, this facility is air-conditioned and includes a small kitchen, 85-inch TV with laptop connection, restrooms and live animal displays that highlight the diverse ecology of Central Florida. Nature-based programs and activities can also be provided for your event.

Reservations begin at \$32.00/hr.

For more information, please call the Geneva Wilderness Area at (407) 665-2211 or email nswanson@seminolecountyfl.gov.



Ed Yarborough Nature Center

VIDEO & PHOTO POLICY

Occasionally, video and photos may be taken of participants in programs, classes or activities at our facilities. Please be aware that these photos may be used in future program promotional materials.



PROGRAMS

SCHOLARSHIP SEMINOLE

The Seminole County Leisure Services Department is committed to providing quality recreational opportunities to all residents of the county regardless of their economic status. Scholarships apply to youth programs managed by Seminole County Leisure Services only. Scholarships do not apply to programs that are contracted with outside providers.

ADOPT – A – PARK

Groups and organizations interested in demonstrating community pride and making a positive impact in their community are encouraged to participate in Seminole County Leisure Services' Adopt-A-Park program. Groups involved with this program assist with the monitoring, clean-up, and enhancement of Seminole County Leisure Services properties, including parks, trails, trailheads, and Natural Lands properties.



MEMORIAL PROGRAM

Seminole County Leisure Services' Memorial Program allows those seeking to honor a loved one, to memorialize those special people and events through the installment of a memorial bench or placing a memorial stone at one of our existing trees. We have designated trees in our active parks and along the paved trails available through our Memorial Tree Program. Once you choose the Tree you would like to adopt, we order the memorial stone and place it at the base of your tree. Parks that are available are Red Bug Lake Park, Sylvan Lake Park, Sanlando Park and Seminole Softball Complex.



VOLUNTEER WITH LEISURE SERVICES

Volunteering can be the most rewarding and enjoyable experience for people of all ages and walks of life! We invite individuals and community groups to transform their passions into action. Volunteer opportunities include: assistance at parks, trail clearing, invasive species management, tour docents, internships, and much more.

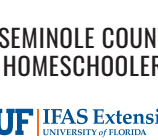
For more information about these programs, please call (407) 665-2170 or visit seminolecountyfl.gov.

COMMUNITY PARTNERS

Seminole County Leisure Services is grateful for the business and nonprofit partners who help enhance the programs and services provided to local residents and visitors.



COMPASS



SEMINOLE COUNTY HOMESCHOOLERS



CALENDAR HIGHLIGHTS

SEPTEMBER

- 9 **Native Plant Day & Open House**
Ed Yarborough Nature Center 9:00 a.m. – 12:00 p.m. | p. 6
- 19-23 **Museum Week**
Museum of Seminole County History | p. 11
- 22-23 **Menendez Spanish Colonial Encampment**
Museum of Seminole County History | p. 11
- 23 **Spores and More Mushroom ID Hike**
Ed Yarborough Nature Center 9:00 a.m. – 12:00 p.m. | p. 13
- 30 **Hero Street Invasion: Library Takeover**
North Branch Library 10:00 a.m. – 1:00 p.m. | p. 8

OCTOBER

- 2 & 16 **Spooky History of Seminole County**
West & North Branch Libraries 6:30-7:30 p.m. | p. 9
- 13 **Master Gardener Volunteer Info Session**
UF/IFAS Extension Seminole County 2:00-3:30 p.m. | p. 12
- 26-28 **Haunted Tours**
Museum of Seminole County History | p. 11
- 28 **Adaptive Tennis Event**
Red Bug Lake Park | p. 5
- 28 **Wildlife Photography Hike**
Lake Harney Wilderness Area 7:30 – 10:30 a.m. | p. 6

NOVEMBER

- 3 **Port of Sanford: The Gateway to Middle Florida**
North Branch Library 10:30-11:30 a.m. | p. 8
- 19 **Swamp Walk**
Spring Hammock Preserve 8:00-10:00 a.m. | p. 7
- 20 **Thankful Books**
Central Branch Library 4:00-5:00 p.m. | p. 9

DECEMBER

- 2 **Little Blue Truck at the Library**
West Branch Library 10:00-11:30 a.m. | p.9
- 7 **Florida 4-H Food Challenge Workshop**
UF/IFAS Extension Seminole County | p.12
- 7 & 14 **Food Preservation Workshops**
UF/IFAS Extension Seminole County | p.12
- 9 **Orienteering Class**
Ed Yarborough Nature Center 9:00 – 11:00 a.m. | p.6
- 9 **St. Lucia Festival**
Museum of Seminole County History 12:00-4:00 p.m. | p.11

Kids Program (age 17 and under):



SEMINOLE COUNTY

FLORIDA'S NATURAL CHOICE

