



Demographic and Income Profile

Lake Mary city, FL (1238425)
 Lake Mary city, FL (1238425)
 Geography: Place

Prepared by Esri

Summary	Census 2010	Census 2020	2022	2027
Population	14,653	16,798	16,978	17,102
Households	5,694	6,694	6,769	6,838
Families	4,095	-	4,788	4,822
Average Household Size	2.50	2.47	2.44	2.44
Owner Occupied Housing Units	4,230	-	4,731	4,721
Renter Occupied Housing Units	1,464	-	2,038	2,117
Median Age	41.8	-	44.9	45.6

Trends: 2022-2027 Annual Rate	Area	State	National
Population	0.15%	0.61%	0.25%
Households	0.20%	0.62%	0.31%
Families	0.14%	0.59%	0.28%
Owner HHs	-0.04%	0.83%	0.53%
Median Household Income	2.79%	3.75%	3.12%

Households by Income	2022		2027	
	Number	Percent	Number	Percent
<\$15,000	164	2.4%	98	1.4%
\$15,000 - \$24,999	239	3.5%	144	2.1%
\$25,000 - \$34,999	280	4.1%	188	2.7%
\$35,000 - \$49,999	507	7.5%	353	5.2%
\$50,000 - \$74,999	954	14.1%	798	11.7%
\$75,000 - \$99,999	1,025	15.1%	1,056	15.4%
\$100,000 - \$149,999	1,371	20.3%	1,496	21.9%
\$150,000 - \$199,999	924	13.7%	1,162	17.0%
\$200,000+	1,303	19.3%	1,542	22.6%
Median Household Income	\$105,333		\$120,873	
Average Household Income	\$146,952		\$169,893	
Per Capita Income	\$57,578		\$66,767	

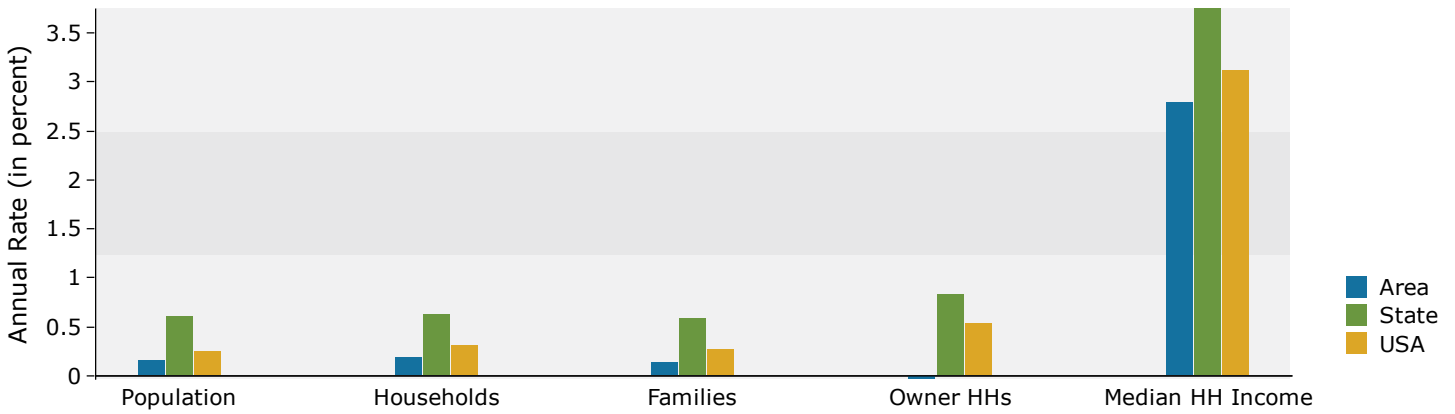
Population by Age	Census 2010		2022		2027	
	Number	Percent	Number	Percent	Number	Percent
0 - 4	742	5.1%	735	4.3%	741	4.3%
5 - 9	877	6.0%	859	5.1%	825	4.8%
10 - 14	991	6.8%	989	5.8%	944	5.5%
15 - 19	1,007	6.9%	960	5.7%	904	5.3%
20 - 24	748	5.1%	798	4.7%	734	4.3%
25 - 34	1,527	10.4%	2,034	12.0%	1,821	10.6%
35 - 44	2,198	15.0%	2,129	12.5%	2,462	14.4%
45 - 54	2,558	17.5%	2,430	14.3%	2,227	13.0%
55 - 64	2,065	14.1%	2,641	15.6%	2,481	14.5%
65 - 74	1,040	7.1%	2,049	12.1%	2,221	13.0%
75 - 84	618	4.2%	975	5.7%	1,300	7.6%
85+	282	1.9%	378	2.2%	446	2.6%

Race and Ethnicity	Census 2010		Census 2020		2022		2027	
	Number	Percent	Number	Percent	Number	Percent	Number	Percent
White Alone	12,218	83.4%	11,448	68.2%	11,338	66.8%	10,903	63.8%
Black Alone	893	6.1%	1,072	6.4%	1,146	6.7%	1,184	6.9%
American Indian Alone	41	0.3%	32	0.2%	41	0.2%	42	0.2%
Asian Alone	812	5.5%	1,636	9.7%	1,505	8.9%	1,658	9.7%
Pacific Islander Alone	6	0.0%	18	0.1%	16	0.1%	16	0.1%
Some Other Race Alone	302	2.1%	604	3.6%	702	4.1%	777	4.5%
Two or More Races	381	2.6%	1,988	11.8%	2,230	13.1%	2,521	14.7%
Hispanic Origin (Any Race)	1,676	11.4%	2,452	14.6%	2,814	16.6%	3,039	17.8%

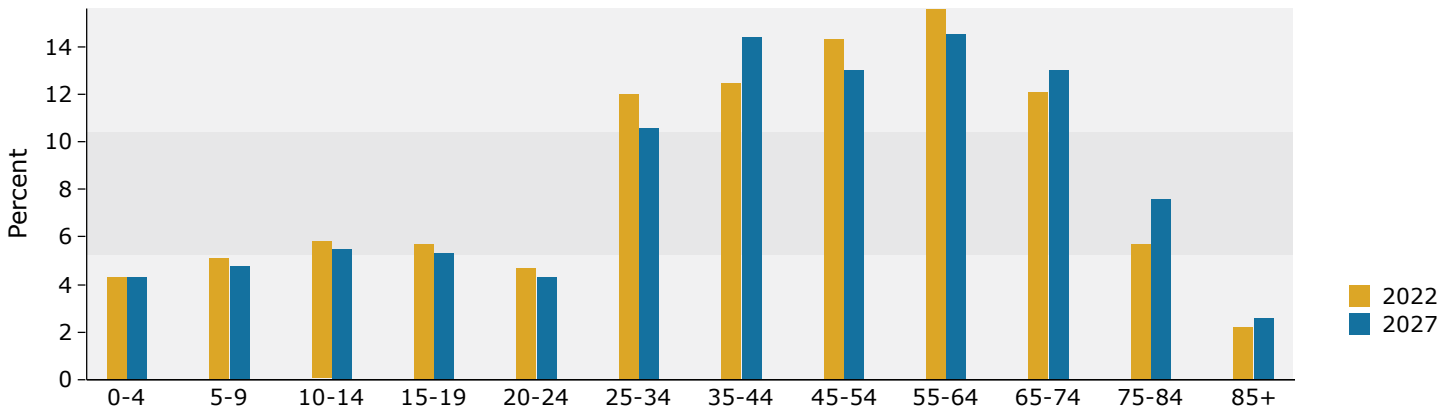
Data Note: Income is expressed in current dollars.

Source: Esri forecasts for 2022 and 2027. U.S. Census Bureau 2010 decennial Census data converted by Esri into 2020 geography.

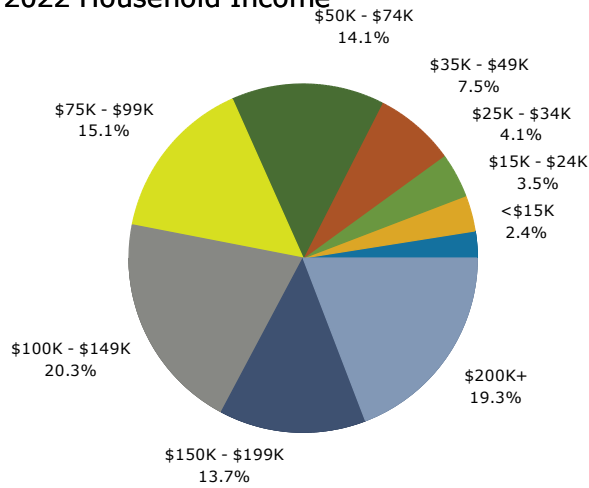
Trends 2022-2027



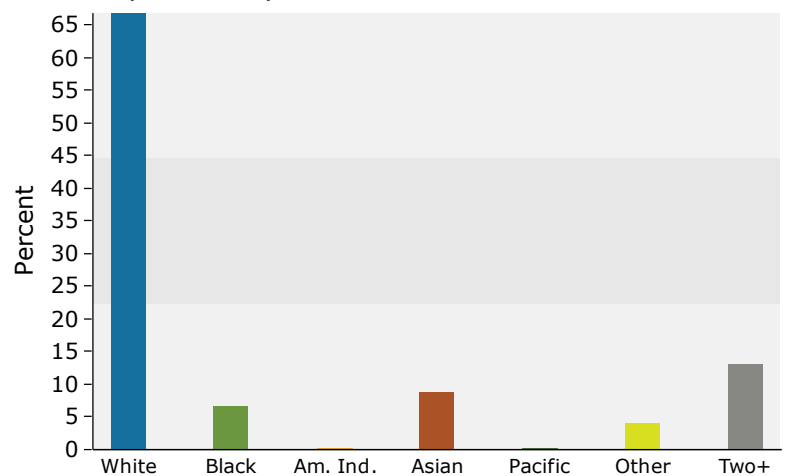
Population by Age



2022 Household Income



2022 Population by Race



2022 Percent Hispanic Origin: 16.6%

Source: Esri forecasts for 2022 and 2027. U.S. Census Bureau 2010 decennial Census data converted by Esri into 2020 geography.