



Demographic and Income Profile

Altamonte Springs city, FL (1200950)
Altamonte Springs city, FL (1200950)
Geography: Place

Prepared by Esri

Summary	Census 2010	Census 2020	2022	2027
Population	42,606	46,258	47,110	48,375
Households	19,634	21,113	21,638	22,205
Families	10,575	-	11,494	11,791
Average Household Size	2.15	2.18	2.17	2.17
Owner Occupied Housing Units	9,084	-	9,664	10,095
Renter Occupied Housing Units	10,550	-	11,974	12,110
Median Age	36.3	-	38.6	39.2

Trends: 2022-2027 Annual Rate	Area	State	National
Population	0.53%	0.61%	0.25%
Households	0.52%	0.62%	0.31%
Families	0.51%	0.59%	0.28%
Owner HHs	0.88%	0.83%	0.53%
Median Household Income	3.50%	3.75%	3.12%

Households by Income	2022		2027	
	Number	Percent	Number	Percent
<\$15,000	1,162	5.4%	940	4.2%
\$15,000 - \$24,999	1,585	7.3%	1,209	5.4%
\$25,000 - \$34,999	2,047	9.5%	1,740	7.8%
\$35,000 - \$49,999	3,422	15.8%	2,973	13.4%
\$50,000 - \$74,999	4,877	22.5%	4,625	20.8%
\$75,000 - \$99,999	3,246	15.0%	3,615	16.3%
\$100,000 - \$149,999	2,708	12.5%	3,537	15.9%
\$150,000 - \$199,999	1,360	6.3%	1,995	9.0%
\$200,000+	1,230	5.7%	1,570	7.1%

Median Household Income	\$60,677	\$72,067
Average Household Income	\$86,601	\$101,971
Per Capita Income	\$38,871	\$45,694

Population by Age	Census 2010		2022		2027	
	Number	Percent	Number	Percent	Number	Percent
0 - 4	2,460	5.8%	2,420	5.1%	2,538	5.2%
5 - 9	2,186	5.1%	2,376	5.0%	2,392	4.9%
10 - 14	2,282	5.4%	2,330	4.9%	2,365	4.9%
15 - 19	2,504	5.9%	2,274	4.8%	2,355	4.9%
20 - 24	3,364	7.9%	3,495	7.4%	3,455	7.1%
25 - 34	7,734	18.2%	8,041	17.1%	8,139	16.8%
35 - 44	5,983	14.0%	6,829	14.5%	6,838	14.1%
45 - 54	5,837	13.7%	5,707	12.1%	5,814	12.0%
55 - 64	4,667	11.0%	5,459	11.6%	5,488	11.3%
65 - 74	2,886	6.8%	4,503	9.6%	4,639	9.6%
75 - 84	1,799	4.2%	2,600	5.5%	3,130	6.5%
85+	908	2.1%	1,078	2.3%	1,219	2.5%

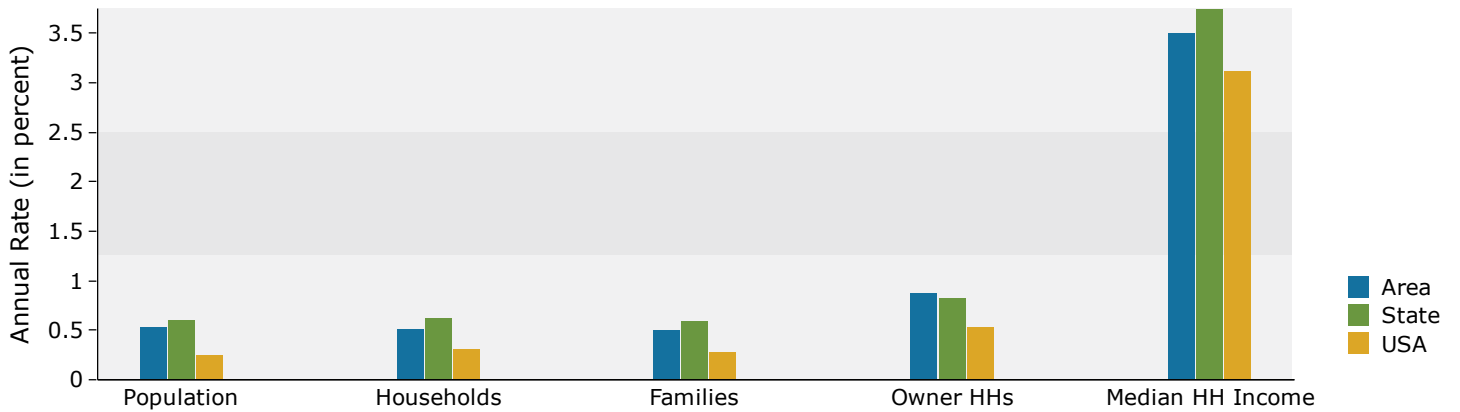
Race and Ethnicity	Census 2010		Census 2020		2022		2027	
	Number	Percent	Number	Percent	Number	Percent	Number	Percent
White Alone	31,455	73.8%	23,897	51.7%	24,506	52.0%	23,643	48.9%
Black Alone	5,481	12.9%	7,629	16.5%	7,090	15.1%	7,279	15.0%
American Indian Alone	145	0.3%	240	0.5%	240	0.5%	257	0.5%
Asian Alone	1,372	3.2%	1,685	3.6%	1,693	3.6%	1,876	3.9%
Pacific Islander Alone	23	0.1%	25	0.1%	28	0.1%	28	0.1%
Some Other Race Alone	2,579	6.1%	4,371	9.4%	4,484	9.5%	4,908	10.1%
Two or More Races	1,552	3.6%	8,411	18.2%	9,067	19.2%	10,383	21.5%
Hispanic Origin (Any Race)	10,143	23.8%	14,176	30.6%	14,734	31.3%	15,948	33.0%

Data Note: Income is expressed in current dollars.

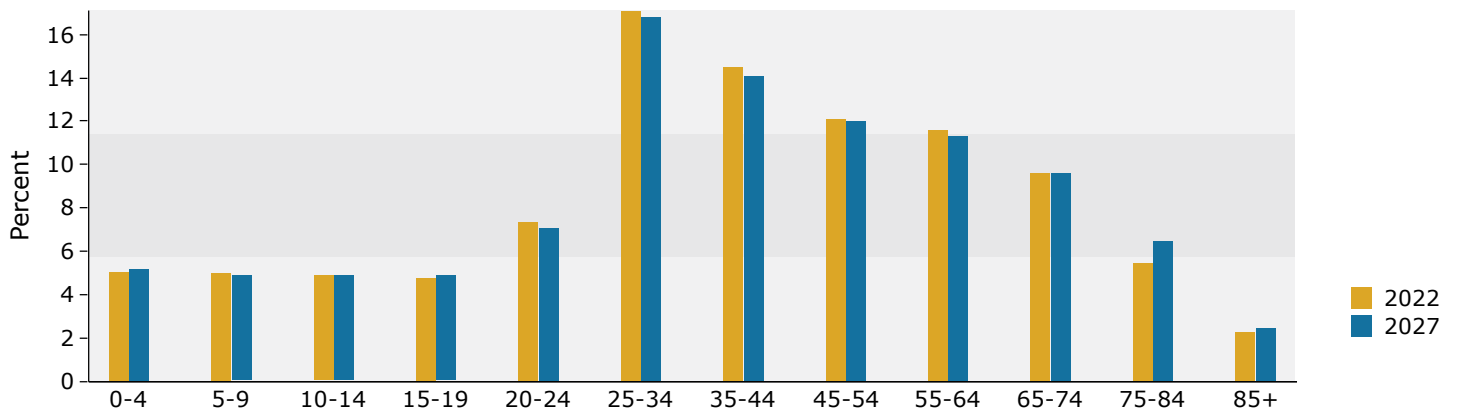
Source: Esri forecasts for 2022 and 2027. U.S. Census Bureau 2010 decennial Census data converted by Esri into 2020 geography.

October 07, 2022

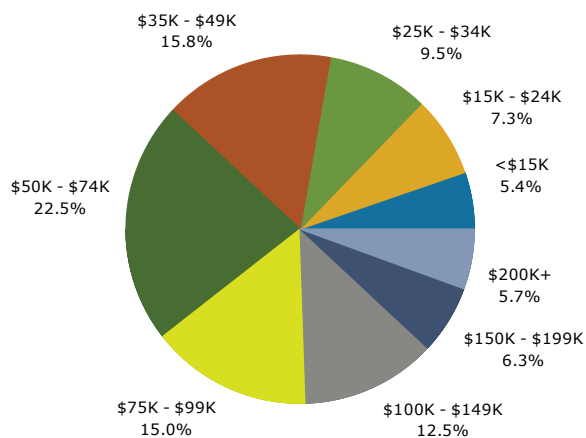
Trends 2022-2027



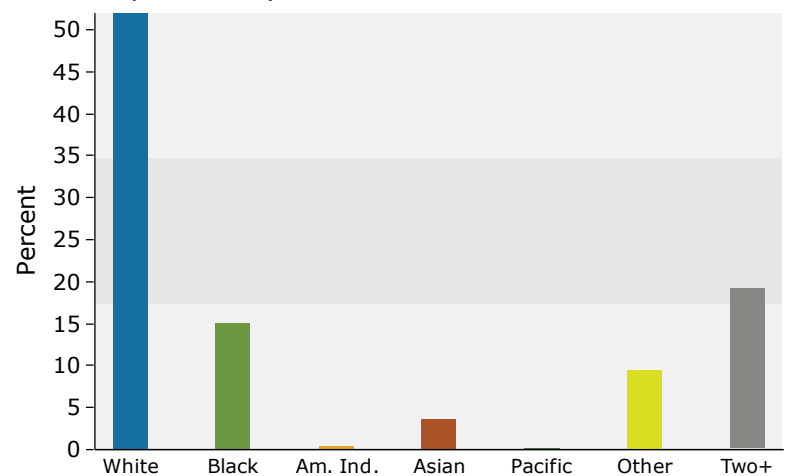
Population by Age



2022 Household Income



2022 Population by Race



2022 Percent Hispanic Origin: 31.3%