



Seminole County Fire Department 2021 ANNUAL REPORT

150 Eslinger Way, Sanford, FL 32773
www.seminolecountyfl.gov/firedepartment

 [seminolecountyfd](https://www.instagram.com/seminolecountyfd) |  [SCFD.1974](https://www.facebook.com/SCFD.1974) |  [scfdpio](https://twitter.com/scfdpio)





FIRE CHIEF ISO CLASS

Our Seminole County **population we proudly serve has increased by nearly 14% since 2010** – and our Board of County Commissioners' steadfast commitment to public safety continues even with the population growth.

In my more than 20 years serving at the Seminole County Fire Department (SCFD), **I know we have and will continue to have a top-tier fire department.** We provide the resources and capabilities of a world-class, all hazards metro fire department ... while maintaining the culture and community focus of a local, hometown fire department.

This year, SCFD officially joined the top .001% of U.S. communities for fire protection. Following a comprehensive evaluation by the Insurance Services Office (ISO), **we received the highest rating given to a fire department concerning our ability to effectively respond to and prevent fires, the ISO Class 1 rating.**

FIRE RESCUE FACT: SCFD is one of only three County Fire Departments in Florida with an ISO Class 1 rating and among 411 ISO Class 1 departments nationwide.

F'S MESSAGE: S 1 RATING

The ISO evaluates fire protection efforts in over 35,000 communities throughout the United States. An ISO Class 1 rating represents an exemplary fire suppression program that responds quickly to community needs, mitigates risk at the highest possible standards, and demonstrates an exceptional commitment to saving and protecting life, property and the environment. Visit www.seminolecountyfl.gov/ISO to learn how this high rating benefits our homeowners and businesses.

On behalf of SCFD, thank you for the trust you place in us to serve you during your greatest time of need.



Fire Chief Matt Kinley
Seminole County Fire Department



We are a big enough Fire Department to grow and learn with lots of opportunities, yet small enough to build lifelong bonds. Our Department also values firefighters and their families.

- Lt. Dave McDonald, promoted to Lieutenant in 2021



Class 1 rating



Lt. Dave McDonald and his family



Firefighter Kendrick Moore at SCFD graduation with his grandfather

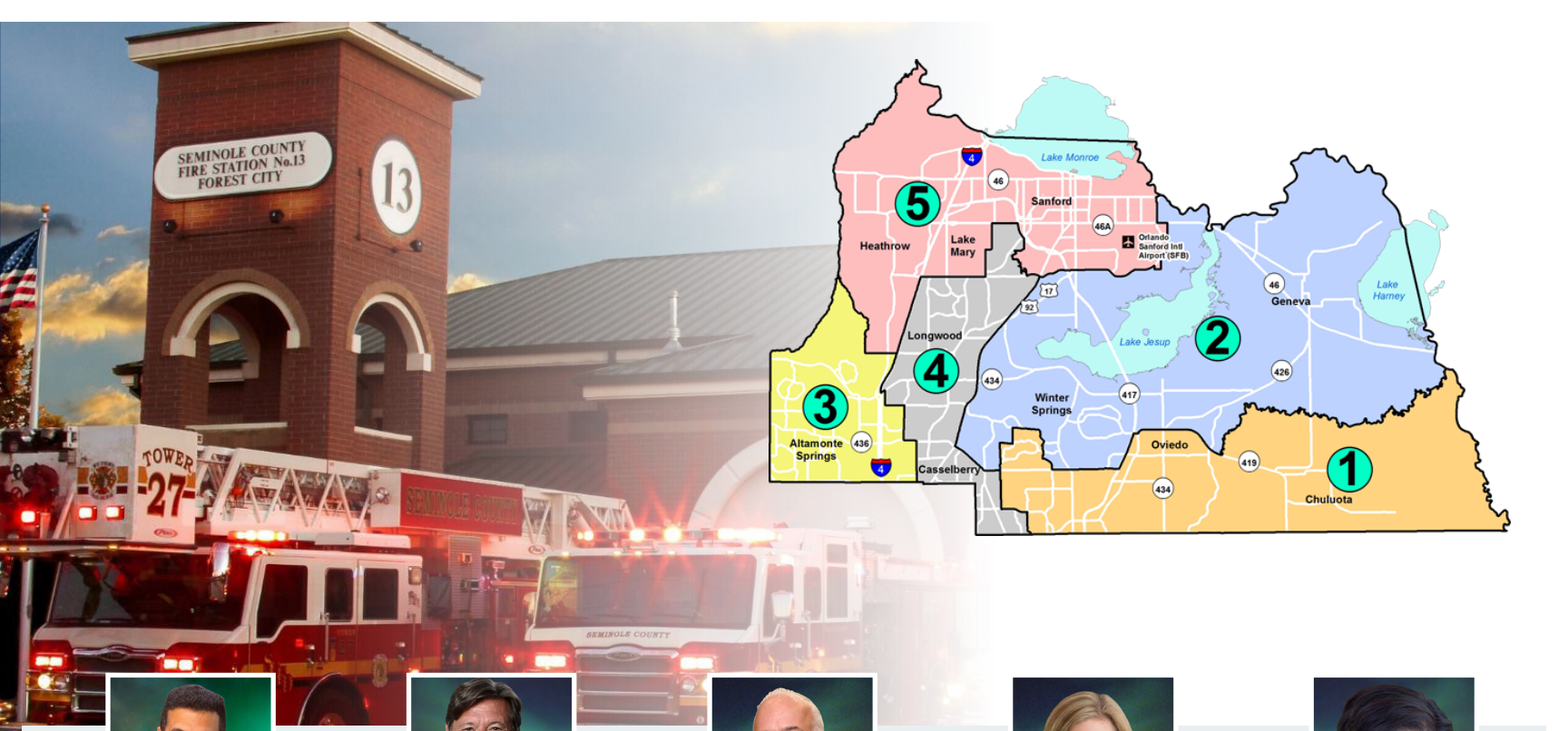
Other 2021 Highlights:

- **Promotions of Firefighters.** More than 20 Firefighters/Paramedics were promoted to the rank of Lieutenant – the highest number in SCFD's history.
- **More Firefighters to Serve You.** 30 Firefighters were funded by a national \$7 million grant called the SAFER Grant. This grant was created to help fire departments have frontline firefighters available in their communities where they need it most. For SCFD, that is in the areas of Altamonte Springs, Wekiva Springs and Geneva.
- **New Station Planning and Renovations to Better Serve You.** Relocation of new Station 11 in Altamonte near the SunRail station is on the horizon for opening. We are working on the relocation of Station 25 in Casselberry, a new location for Station 23 in the Howell Branch area, and we are also in the planning stages for the groundbreaking for the construction of Station 39 in the Sanford/Paola area.

TABLE OF CONTENTS



05	Seminole County at a Glance	19	EMS Operations
07	About Us	21	Special Operations
08	SCFD Organizational Chart	23	SCFD Fleet
09	Medical Director	30	Emergency Communications
11	Operations	31	Fire Prevention
15	Professional Standards & Training	33	Public Information & Community Outreach
17	Fiscal	35	Fire Stations



Bob Dallari
Chairman
District 1



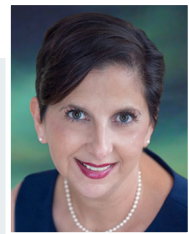
Lee Constantine
Vice Chairman
District 3



Jay Zembower
District 2



Amy Lockhart
District 4



Andria Herr
District 5

SEMINOLE COUNTY AT A GLANCE

POPULATION:

- Seminole County: 470,093
- Unincorporated Seminole County: 225,200

SIZE:

- 345 square miles
- Trails System: 300,000+ acres
- 4th most densely populated County in Florida

VISITORS:

- 1.5 million visitors annually
- Orlando Sanford International Airport - 2.3 million passengers in 2021

RESIDENTS:

- Total households: 178,094
- Median age: 39.3
- Number of Employed Residents: 188,461
- Number of Businesses: 14,251

TOTAL SCFD POPULATION SERVED:

338,127

- Unincorporated: 225,200
- Altamonte Springs: 45,517
- Casselberry: 29,093
- Winter Springs: 38,317

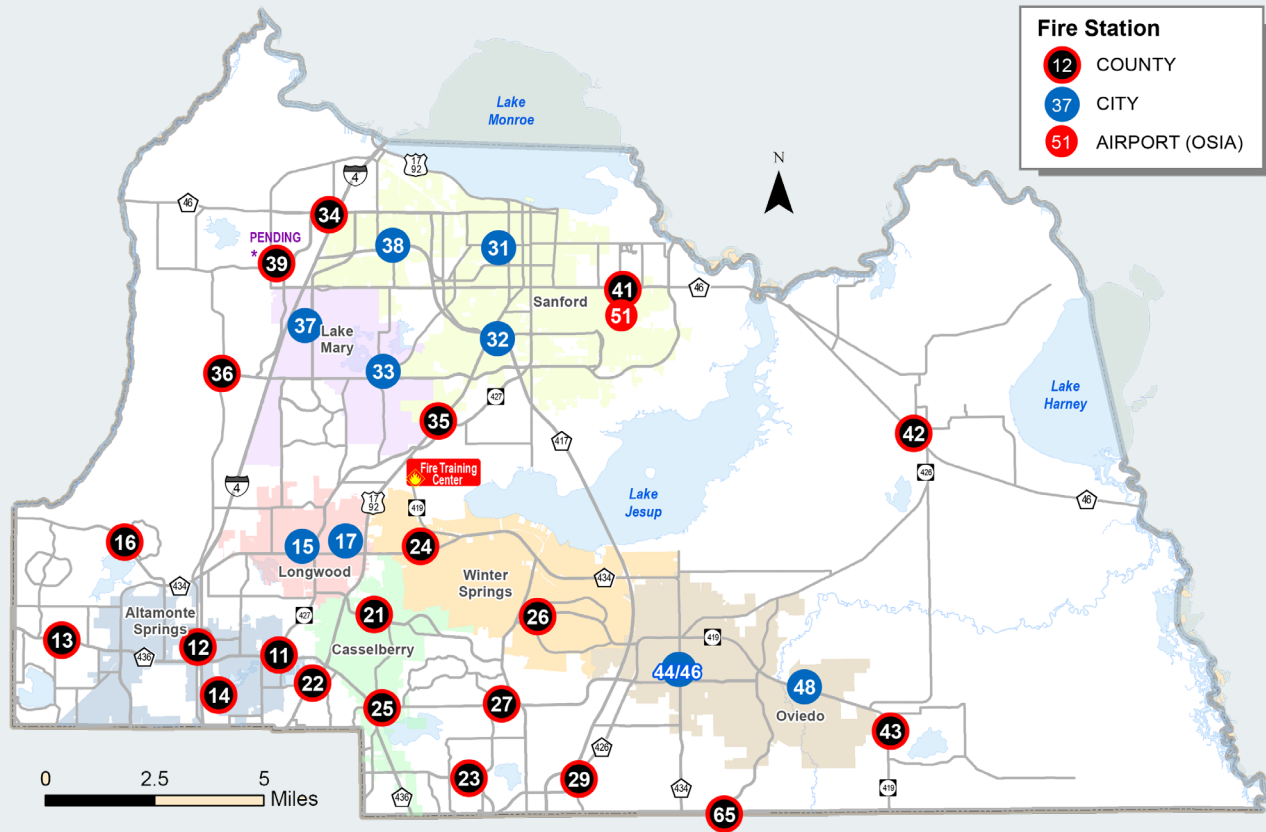
1ST RESPONSE AGREEMENTS POPULATION (CLOSEST UNIT RESPONDS) ARE IN PLACE WITH THE CITIES OF:

- Lake Mary: 16,616
- Longwood: 15,110
- Oviedo: 39,559
- Sanford: 60,681



Seminole County also has mutual aid and first response agreements with the Orlando Sanford International Airport and bordering counties.

**Population estimates from US Census 2021*



FIRE RESCUE FACT: SCFD works closely and trains with all municipal fire departments in Seminole County. The closest responding unit – regardless of jurisdiction – responds to the emergency first. This serves our residents with efficiency of faster response times.



ABOUT US

MISSION: 5 Minute Response Time (or Less)
Trained Personnel
Adequate Resources
Constant Prevention
Go Home Safe

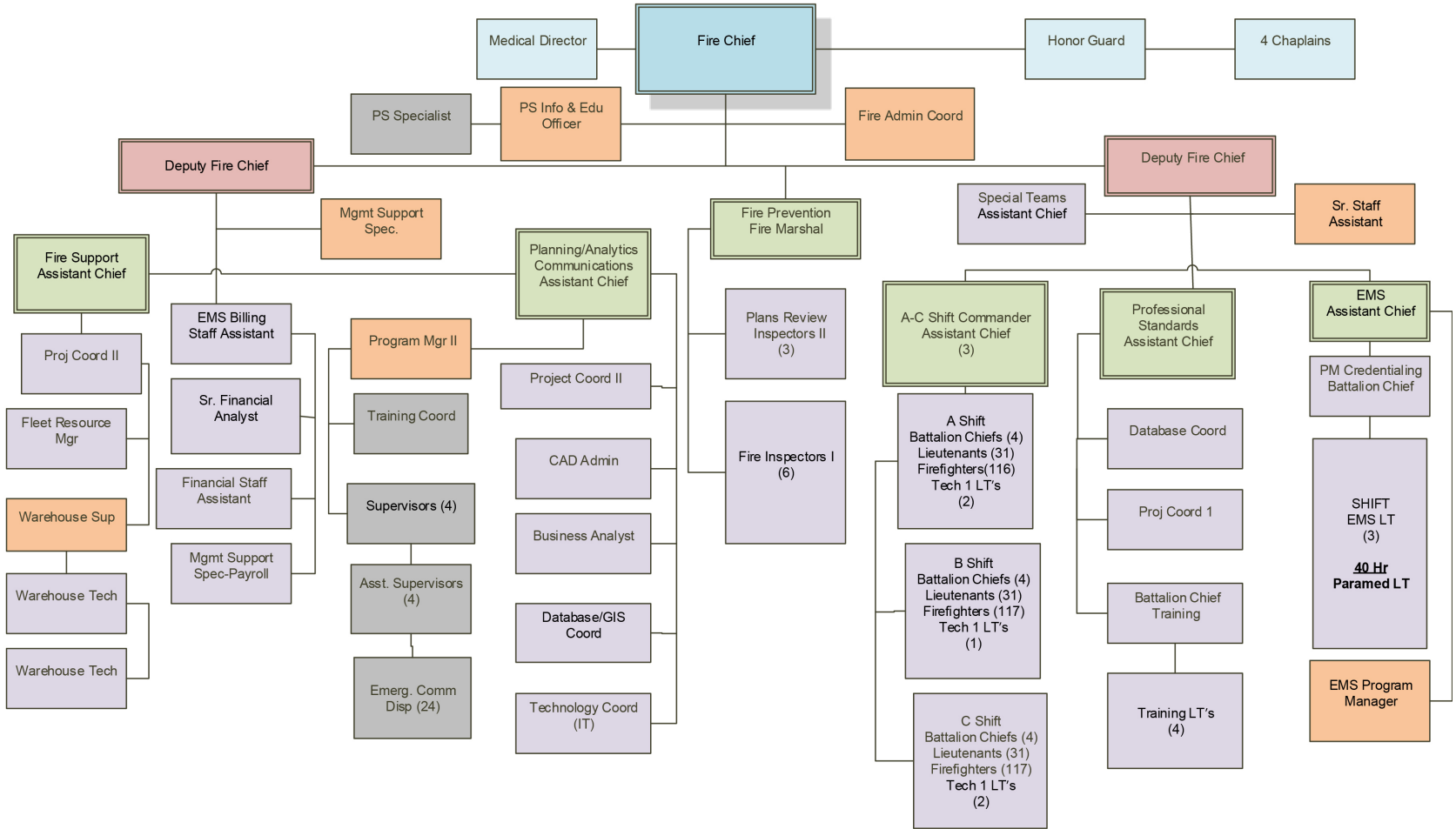
CREED: HONOR THOSE YOU WORK FOR | RESPECT THOSE YOU WORK WITH | SERVE THOSE WHO WORK FOR YOU

PURPOSE: READY TO RESPOND | WILLING TO CARE | TRAINED TO MAKE A DIFFERENCE



FIRE RESCUE FACT: Seminole County Fire Department was founded in 1974. Founding Fire Chief Gary Kaiser still resides in Seminole County.





MEDICAL DIRECTOR



DR. TODD HUSTY
MEDICAL DIRECTOR

PROTOCOLS

**PARAMEDIC AND
EMT LICENSING**

**PARAMEDIC AND EMT COMPLIANCE/
CONTINUING EDUCATION TRAINING**

The Medical Director's Office

establishes the emergency medicine protocols that Paramedics and EMTs can perform and practice under the Medical Director's license. It is overseen by Dr. Todd M. Husty.

- Conducts six to eight medical director meetings per month leading staff in discussion on recent EMS calls to help with quality assurance, dialogue, and training.



**DR. HUSTY AT LIFE SAVING
AWARD AT STATION 29**

FIRE RESCUE FACT: There are more than 250 Paramedics at SCFD







OPERATIONS

SCFD operates **three shifts** (A, B & C) led by an Assistant Chief who serves as the Shift Commander. They are responsible for **4 Battalions** each with a Battalion Chief charged with the oversight of the stations and personnel within area (see page 35 for Battalion and Station breakdowns).

Value Saved

PRE-INCIDENT VALUE

\$47,028,670

LOSSES

\$5,946,290

VALUE SAVED

\$41,082,380



JOHN THIBERT
Deputy Chief of
Operations



BEN DECUIR
Assistant Chief
A Shift



JEFF BLAKE
Assistant Chief
B Shift



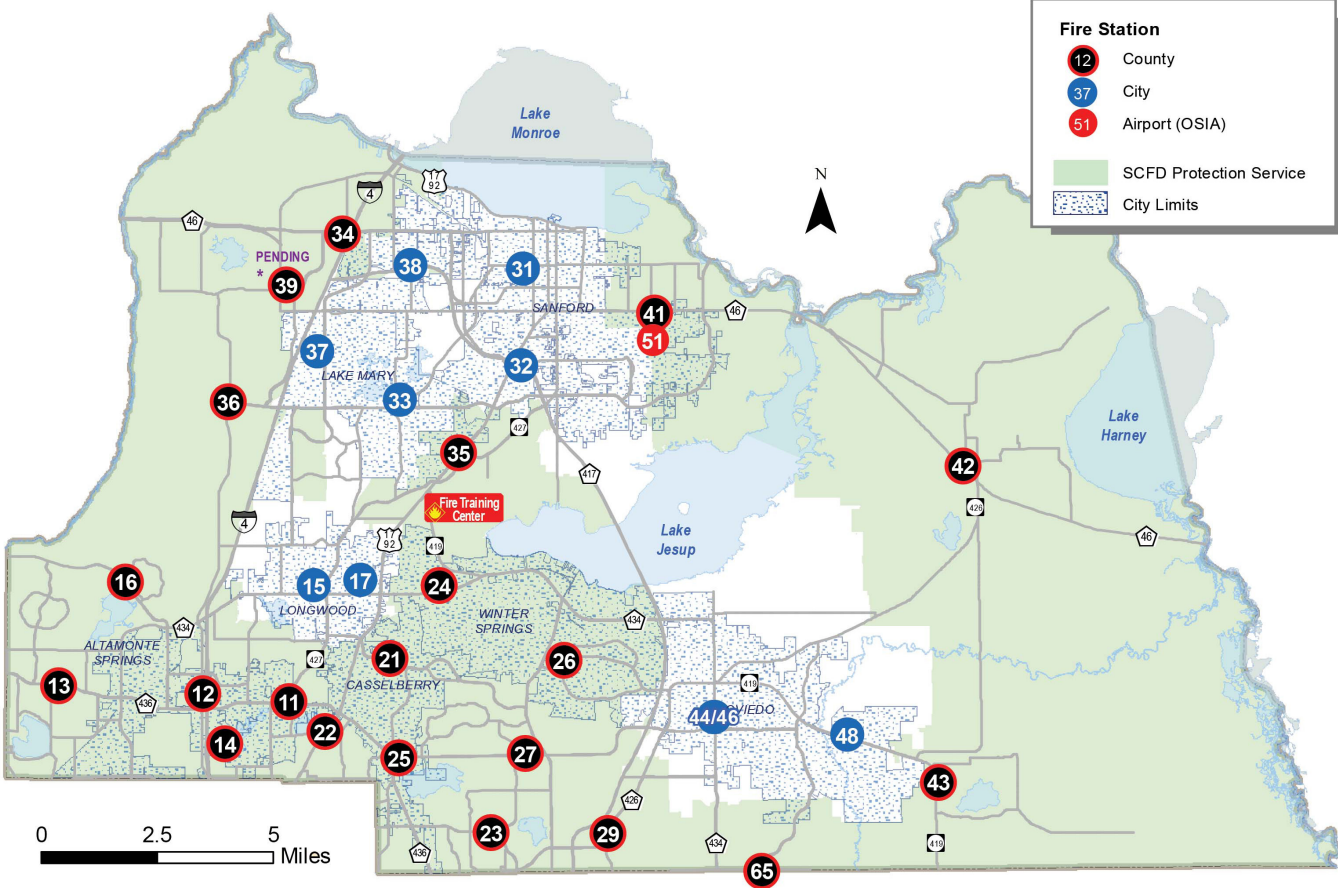
BRADLEY HAWVER
Assistant Chief
C Shift

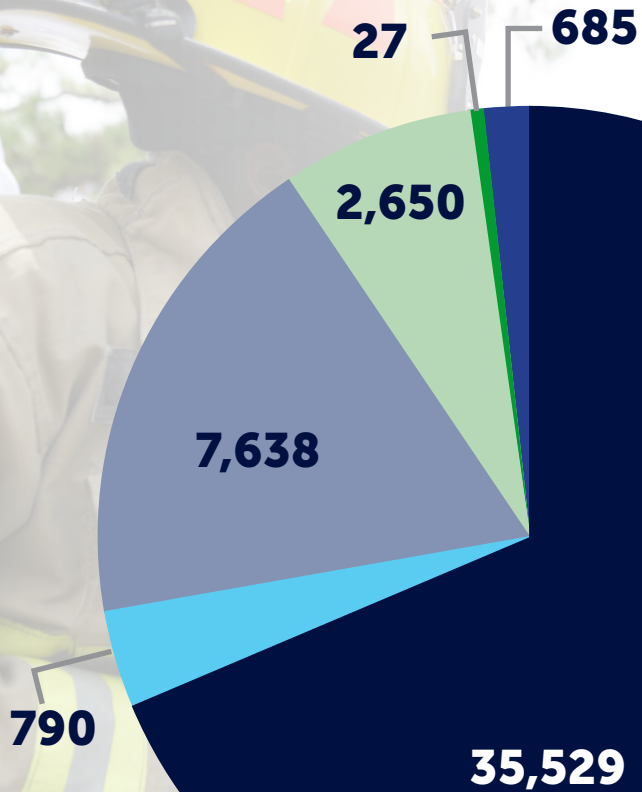
FIRE RESCUE FACT: There are **153** Personnel Staffed Per Shift



Seminole County Fire Department

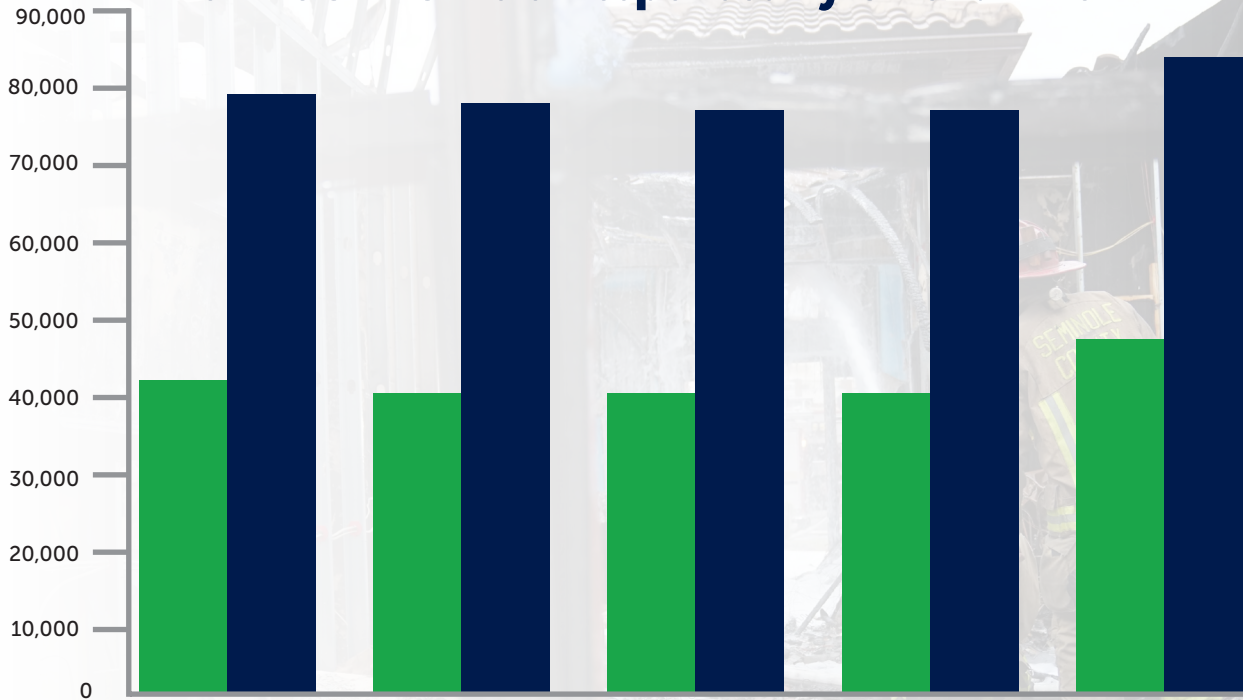
Protective Service Area





- Rescue & Emergency Medical Service
- Hazardous Condition (No Fire)
- Good Intent/Service
- False Alarms
- Other
- Fires

Total SCFD Calls & Responses By Calendar Year



Average Response Time

2017	05:28
2018	05:10
2019	05:09
2020	05:12
2021	05:14

	2017	2018	2019	2020	2021
Incidents	42,107	41,491	41,546	41,448	47,319
Responses	79,419	78,746	78,143	78,171	87,973

**Incidents – A call for service prompting a unit response*

***Responses – when a unit and/or units respond to an incident. The call type dictates the number of units that respond.*

PROFESSIONAL STANDARDS & TRAINING

SCFD has a strong commitment to training that enables our Fire Department to best serve our residents in times of need. Our 20-acre, 44,000 sq ft. Regional Training Center based in Longwood is a hub for all Fire Training activities. We train and partner with other agencies at the Regional Training Center as well.

- Total Fire & EMS Training Hours: **131,572**
- Live burn building went operational

Recruitment & Hiring

- Total number of recruit Firefighters who went through orientation & training: **58**
- Largest ever graduating class (Class 21-02) in SCFD history – **35 firefighters** (30 funded by FEMA's SAFER grant)
- **43%** of SCFD's new hires grew up in Seminole County and/or reside in the County they serve.





Training Hours by Category in 2021:

Firefighter Training – 52,670 hours

EMS Training – 13,284 hours

Training Drills – 14,809 hours

Driver/Operator Training – 19,062 hours

Hazardous Materials Training – 4,912 hours

Officer Training – 13,155 hours

Recruit Training – 13,680 hours

“
*Don't train until you
get it right, train until
you can't get it wrong*

”

FISCAL

GRANTS:

- **\$7,321,470** Federal Grant for the Staffing for Adequate Fire and Emergency Response (SAFER) to hire 30 additional firefighters and paramedics to serve the community
- **\$861,000** Assistance to Firefighters Grants Program regarding Source Capture Exhaust Extraction System at all of SCFD's fire stations with 10% match requirement (to remove diesel exhaust to prevent/protect against cancer)
- **\$177,980** Fire Prevention and Safety Grant from the Department of Homeland Security for smoke alarms
- **\$6,216** grant from State Fire Marshal Office for cancer decontamination equipment



Fire Chief Matt Kinley accepts check from State Fire Marshal and CFO Jimmy Patronis to aid with cancer decontamination.



30 Firefighters from Class 21-02
were funded with SAFER grant dollars



BUDGET
\$80.1 Million



MILLAGE RATE :
2.7649

Fiscal Year 2020/21 Budget Breakdown

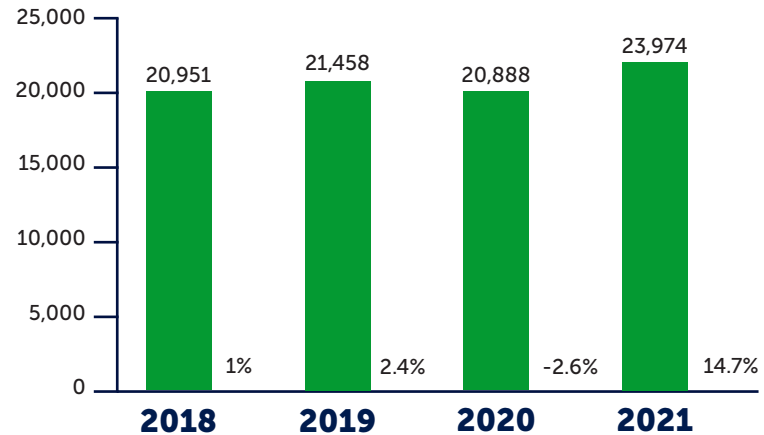
	FY21 Adopted Budget	FY21 Actuals	FY21 Expenditures
Personnel Services	\$58,005,761	\$58,222,594	74.0%
Operating Expenditures	\$5,809,445	\$6,534,895	8.3%
Internal Service Charges	\$5,372,583	\$4,108,065	5.2%
Capital Outlay	\$10,661,997	\$9,526,618	12.1%
Grants & Aids	\$305,000	\$250,543	0.3%
Interfund Transfers Out	\$ -	\$2,727	0.0%
Grand Total	\$80,154,786	\$78,645,442	100%

509 Full-Time Personnel

EMS OPERATIONS

Around **80%** of all responses at the Seminole County Fire Department are EMS (Emergency Medical Services) related.

EMS Transports:



FIRE RESCUE FACT: SCFD is one of the only County Fire Departments in the nation to attain ISO Class 1 rating and accreditation through the Commission on Accreditation of Ambulance Services (CAAS).





COVID-19 Vaccines

SCFD established the VAX-1 Team where EMTs/Paramedics worked together with the Florida Department of Health-Seminole and Seminole County's Emergency Management Team to help vaccinate thousands of Seminole County residents.



Pet Oxygen Masks

SCFD received **donations of oxygen pet masks for all of its 20 stations** from a grant from Invisible Fence Brand's Project Breathe Program. Local residents have also donated pet masks to the Department.

PulsePoint

4,370 MONTHLY ACTIVE USERS AND MORE THAN 330 AEDS IN PULSEPOINT

Since 2010, SCFD has had its CAAS accreditation, which signifies that the Department's service has met the "gold standard" determined by the ambulance industry to be essential in a modern emergency medical services provider.





SPECIAL OPERATIONS

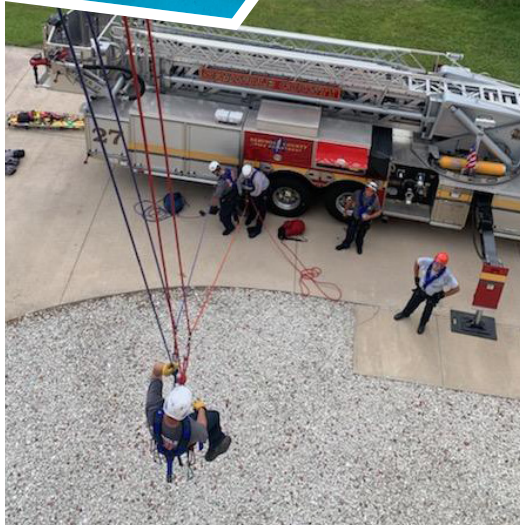
SCFD is an all-hazards Fire Department with plenty of special teams and opportunities for training and growth. These specialized teams serve our Seminole County community in unique ways depending on the circumstances of the 911 call.

Special Team Assignments:

- Special Hazards & Operations Team (SHOT)
- Tower Team
- Dive Team
- Prescribed Burn
- Tanker Team
- Bike Team
- Honor Guard

Other Opportunities:

- Trails Responses
- Marine Unit Operators (e.g., boats, airboats, etc.)
- Farm Animal Rescue
- Peer Fitness Team





Urban Search & Rescue Task Force 4

The mission of the Urban Search & Rescue (US&R) Team is to respond to natural and man-made disasters and to provide search and rescue, medical support, communications and damage assessment. US&R Task Force 4 was founded in 2004 and established by the following three lead Central Florida agencies:

- **Seminole County Fire Department**
- **Orange County Fire Rescue Department**
- **Orlando Fire Department**

In 2021, the team was deployed to:

- Surfside building collapse recovery efforts (11 SCFD members deployed)
- Assisting with Hurricane Ida Operations in Louisiana (10 SCFD members deployed)



"The Urban Search & Rescue team members bring the highest level of experience, professionalism and compassion to work as they help our community in times of need. Seminole County Fire Department is proud to be a part of this Task Force and stands shoulder-to-shoulder with our partners to help our neighbors when we are called to do so."

—SCFD Fire Chief Matt Kinley



SCFD Firefighter Roger Windham was named Florida Task Force 4 Team Member of the Year for 2020. He was recognized by Florida CFO Jimmy Patronis.



Lt. Alan Ward returns from deployment at Surfside

SCFD FLEET

NUMBER OF FRONTLINE UNITS



ENGINES: 17
RESERVE ENGINES: 10



RESCUES: 21
RESERVE RESCUES: 10



AERIALS: 4
RESERVE AERIALS: 2



MARINE UNITS: 8



WOODS TRUCKS: 8

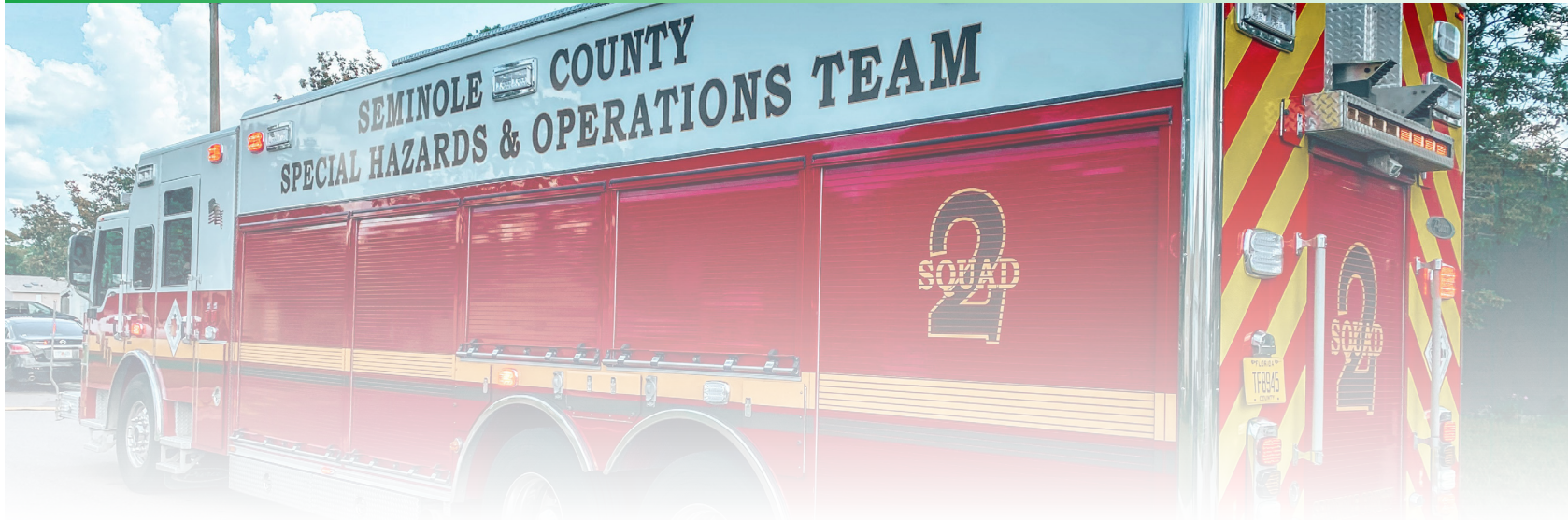


TANKERS: 4



UTVS: 5

OTHER:



- **Special Hazards & Operations Units (SHOT): 4 (1 Squad & 3 SHOT Engines)**
- **Bariatric Rescue Unit: 1**
- **Mobile Command Unit: 1**
- **Mass Casualty Unit: 1**
- **AmbuBus : 1**
- **Rehab: 1**
- **6x6 Evacuation Units: 2 (High-water vehicles)**

Fleet photos credit: Seth Reynolds, Florida Emergency Photography & Photographer Norm Reyburn

NEW UNITS:



QUINT 34

In March 2021, SCFD placed its first Quint – Quint 34 into service – at Fire Station 34 in Paola. The multi-functioning fire truck is the first of its kind for Seminole County. The Quint serves as a cross between a fire engine and ladder truck. It has five primary functions, hence the name “quint.” Functions include a pump, water tank, large diameter fire hose, an aerial device and ground ladders.

AMBUBUS



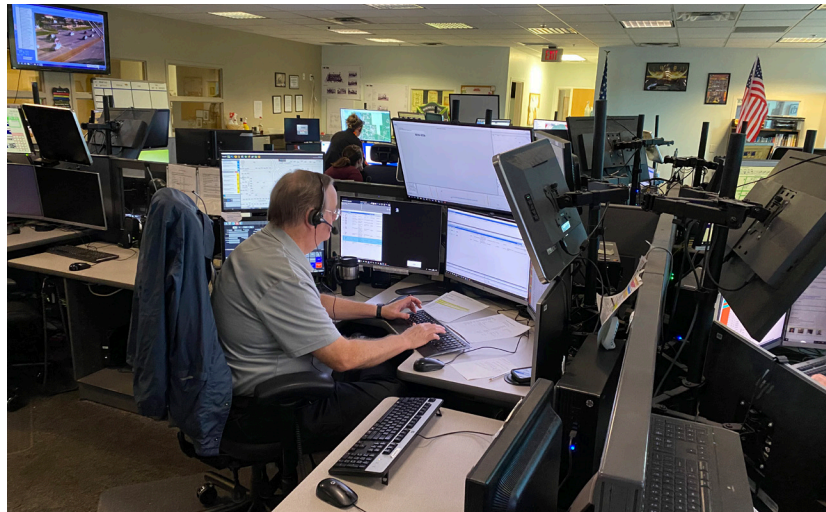
An “AmbuBus” (ambulance bus) joined SCFD’s fleet in late 2021 and was purchased with Federal CARES dollars. The AmbuBus serves as an effective and efficient deployment asset in the event of mass evacuation and transport of patients, casualties, and others who require non-ambulatory transport.

- Multi-patient transport unit can accommodate up to 20 patients.
- Has 15 stretchers and 4 seats for patients.
- Bus can accommodate wheelchairs and special needs patients.

AIRBOAT 42: THE GENEVA FIRE FALCON



Airboat 42 – named “The Geneva Fire Falcon” by Geneva Elementary – is a valuable search & rescue asset to serve all of Seminole County. In the past, Geneva has had flooding at Lake Harney during hurricane season. This new airboat can be deployed to make flood rescues in order to access residents on streets that may be flooded.



EMERGENCY COMMUNICATIONS

SCFD's 911 Dispatch Team consists of 32 Telecommunicators as well as a Training Coordinator, Communications Manager, and a CAD (Computer Aided Dispatch) Administrator.



SCFD Emergency Communications Center also fields after-hour calls to Animal Services, Public Works, Traffic Engineering, Environmental Services, Fleet and Facilities.

AVERAGE 911 CALLS ANSWERED PER DAY:
141

PERCENTAGE OF CALLS ANSWERED WITHIN 10 SECONDS:
97%



FIRE RESCUE FACT: Dispatchers receive hands-on training through the agency's in-house state-certified training academy. Dispatchers also gain on-site familiarization at each fire station in Seminole County, which assists in geography and apparatus familiarization.

FIRE PREVENTION

2,389
NEW
INSPECTIONS

4,260
EXISTING
INSPECTIONS

74
FIRE
INVESTIGATIONS

2,964
PLANS
REVIEW



Fire Marshal Christiana Diaz was profiled for Valencia College's alumni publication for her work leading Seminole County's Fire Prevention Team.

Smoke Alarms

Distributed & Installed:

- 3,092 smoke alarms
- Nearly 100 fire safety alarm devices for the deaf or hard of hearing

A \$178,000 grant awarded to the Seminole County Board of Commissioners and SCFD on behalf of the Department of Homeland Security's Fire Prevention and Grant funding, helped fund smoke alarm outreach efforts. Many of the free smoke alarms were distributed and installed in older or underserved neighborhoods in Seminole County.



Fire Prevention Week Outreach

Fire Inspector Bill Jensen demonstrates fire safety to local preschool students in SCFD's Fire Prevention Interactive Fire Safety Trailer.



FIRE RESCUE FACT: Roughly 3 out of 5 fire deaths occur in homes with no working smoke alarms.



PUBLIC INFORMATION & COMMUNITY OUTREACH



Number of Media Inquiries/Stories: **457**

Nearly **70%** of all media placements were stories that SCFD proactively shared with the media

139% increase in positive media coverage compared to previous year

Nearly **80** media interviews were conducted with subject matter experts at SCFD



SAVE A LIFE SEMINOLE HANDS-ONLY CPR: TRAINED **630** RESIDENTS



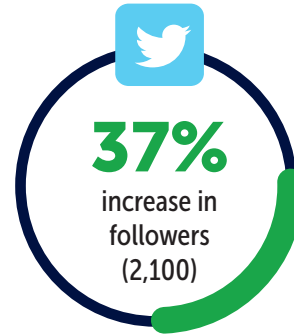
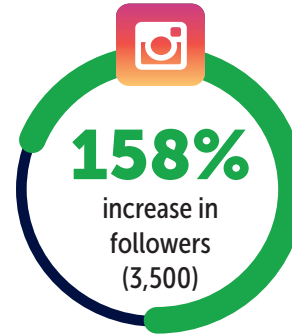
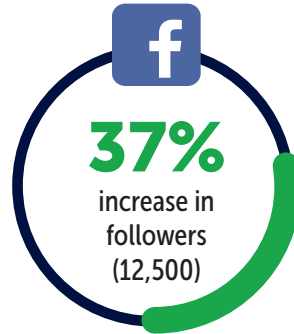
The Department participated in nearly **300** Community Outreach Events reaching more than **50,000** residents, including:

- Station visits
- Community educational events
- Drive-by birthdays from Engines
- Recruitment events
- Car Seat Installations/Checks



Learn more about Community Outreach programs and request SCFD to participate in an event:

www.seminolecountyfl.gov/communityoutreach



FIRE RESCUE FACT: SCFD averages 70 media stories per month. This positive media coverage helps promote the Department, educate the public, highlight exceptional performance and community involvement.



FIRE STATIONS

Abbreviation Key

E = Engine | **R** = Rescue | **T** = Tower | **Q** = Quint | **TK** = Tanker | **WD** = Woods Truck | **BT** = Boat
ATV = All Terrain Vehicle | **BC** = Battalion Chief



BATTALION 1

Station 11 - Constructed in 1974

Serving Altamonte Springs

175 Newburyport Avenue, Altamonte Springs

Unit Responses:

E11 – 2,893

R11 – 2,885

Other Units:

WD11

BT11

ATV11



FAST FACT: Station numbers are pre-determined by the Fire Department prior to them being built. A lower station number does not necessarily mean the older the station.





Station 12 - Constructed in 1985
 Serving Altamonte Springs
 325 Douglas Avenue, Altamonte Springs

Unit Responses:

E12 – 4,231
R12 – 3,660
T12 – 2,026

Other Units:

BC1



FAST FACT: One of the busiest stations in the County and also ranks among the busiest in the *country* ... averaging about 30 responses per day.



Station 13 - Constructed in 2008
 Serving Forest City/Bear Lake
 3860 E State Road 436, Apopka

Unit Responses:

E13 – 3,824
R13 – 2,996
R14 – 1,031*

**Peak load unit operates from 9 A.M. – 5 P.M. Monday – Friday*



FAST FACT: Houses SCFD's antique 1972 Imperial Engine that is used for special events and parades.



Station 14 - Constructed in 1992
Serving Altamonte Springs
600 Hattaway Drive, Altamonte Springs

Unit Responses:
E14 – 1,307



FAST FACT: Only County Station that houses only an Engine Company, hence the station's nickname "The Lone Wolf."

Station 22 - Constructed in 2008
Serving Fern Park
7122 US Highway 17-92, Casselberry

Unit Responses:
E22 – 2,618
R22 – 2,467



FAST FACT: Houses the County's only bariatric unit, which means the stretcher capacity on this Rescue is larger in order to transport heavier weight.



BATTALION 2



Station 21 - Constructed in 2005
Serving Casselberry
681 Seminola Boulevard, Casselberry

Unit Responses:

E21 – 2,216
R21 – 1,850
R28 – 693*

Other Units:

BT21
EMS1

**Peak load unit operates from 9 A.M. – 5 P.M. Monday – Friday*

FAST FACT: EMS1 is stationed here. EMS1 takes care of medication distribution to all the stations, EMS training, responds to certain medical calls and serves as a hospital liaison.



Station 23 - Constructed circa 1970
Serving Howell Branch
4810 Howell Branch Road, Winter Park

Unit Responses:

E23 – 2,008
R23 – 1,845

FAST FACT: SCFD's oldest fire station. Nicknamed the "Midnight Express" because they run multiple calls after the midnight hour.





Station 25 - Constructed in 1975
Serving Casselberry
1055 Red Bug Lake Road, Casselberry

Unit Responses:

T25 – 2,518

R25 – 2,518



FAST FACT: Only Tower apparatus in Seminole County that isn't co-located with an Engine Company.

Station 26 - Constructed in 1994
Serving Winter Springs/Tuscawilla
850 Northern Way, Winter Springs

Unit Responses:

E26 – 1,452

R26 – 1,399



FAST FACT: Station 26 is located near Trotwood Park and is much loved by the Tuscawilla community.



Station 27 - Constructed in 1990
 Serving Winter Springs/Red Bug
 5280 Red Bug Lake Road, Winter Springs

Unit Responses:

E27 – 2,449
 R27 – 2,126
 T27 – 1,037

Other Units:

BC2



FAST FACT: Covers four unincorporated city areas that include Winer Springs, Winter Park, Casselberry and Oviedo.

Station 29 - Constructed in 2018
 Serving Jamestown
 2300 Via Loma Drive, Oviedo

Unit Responses:

E29 – 1,096
 R29 – 1,149

Other Units:

WD 29



FAST FACT: One of Seminole County Fire Department's newest stations and station design is one that will be used for future SCFD stations.



BATTALION 3

Station 16 - Constructed in 1984
Serving Wekiva Springs/Sabal Point
930 Wekiva Springs Road, Longwood

Unit Responses:

E16 – 2,232

R16 – 2,268

Other Units:

WD16



FAST FACT: Often classes from Sabal Point Elementary School walk to the station for educational fieldtrips since the station is in close proximity to the school.

Station 34 - Constructed in 1981
Serving Paola/Sanford
4905 Wayside Drive, Sanford

Unit Responses:

Q34 – 2,613

R34 – 2,254

Other Units:

WD34 BT34

BT 39 TK34

ATV34



FAST FACT: Runs a variety of calls due to the unique area they cover, which includes multiple major highways, water ways and various trails.



Station 35 - Constructed in 1989
 Serving Sanford/Five Points
 201 West County Home Road, Sanford

Unit Responses:

E35 – 1,718

R35 – 1,737

Squad 2 – 1,311

Other Units:

BT35

WD35



FAST FACT: Home of SCFD's Special Hazards and Operations Team (SHOT).

Station 36 - Constructed in 1985
 Serving Lake Mary/Heathrow
 6200 West Lake Mary Boulevard, Lake Mary

Unit Responses:

E36 – 2,454

R36 – 1,903

Other Units:

BC3



FAST FACT: Station 36 commonly experiences Florida black bear encounters because it is located adjacent to a natural migration corridor.



BATTALION 4

Station 24 - Constructed in 1975
Serving Winter Springs
102 Moss Road North, Winter Springs

Unit Responses:

E24 – 1,933
R24 – 1,793

Other Units:

TK24
Rehab 1
Tech 1



FAST FACT: Tech 1 (short for Incident Command Technician) is assigned to Station 24. Tech 1 responds to major alarms and assists Battalions on commands.



Station 41 - Constructed in 1981
Serving Midway
3355 East State Road 46, Sanford

Unit Responses:

E41 – 1,428
R41 – 1,712

Other Units:

WD41 ATV41
BC4 BT41

FAST FACT: Station 41 is located just outside the property of the Orlando Sanford International Airport and sometimes assists the Airport's Fire Department with various aircraft calls on their property.





Station 42 - Constructed in 1990
Serving Geneva
320 West SR 46, Geneva

Unit Responses:

E42 – 630

R42 – 613

Other Units:

TK42

WD42

BT42

ATV42



FAST FACT: Home of Airboat 42 named the "Geneva Fire Falcon," which was named by a 5th grade class at Geneva Elementary School.



Station 43 - Constructed in 1984
 Serving Chuluota
 110 East 7th Street, Chuluota

Unit Responses:

E43 – 656
R43 – 656

Other Units:

WD43
 ATV43



FAST FACT: Due to its location in Chuluota and near Geneva, the station runs trails response calls, brush fires and many of its personnel have special training in farm animal rescues.



Station 65 - Constructed in 2000
 Serving UCF/Carillon
 4999 North Orion Boulevard - Orlando

Unit Responses:

Seminole County Rescue 65 – 1,738	Orange County Rescue 65 – 1,157
Orange County JZ*	Orange County JZ* 523
Seminole County JZ*	Seminole County JZ* 634

***Jurisdiction**

FAST FACT: Only joint station that is shared between Seminole County Fire Department and Orange County Fire Rescue Department in order to serve the residents and visitors around UCF and Carillon.



