



SCFD

SEMINOLE COUNTY FIRE DEPARTMENT

2019 Annual Report





Table of Contents

6	MESSAGE FROM THE FIRE CHIEF
7	MISSION, CREED & PURPOSE
8	ORGANIZATIONAL CHART
9	OFFICE OF MEDICAL DIRECTOR
10	ADMINISTRATION/FINANCE
12	PLANNING & ANALYTICS
13	EMERGENCY COMMUNICATIONS
14	FIRE SUPPORT
16	PROFESSIONAL STANDARDS & TRAINING
18	FIRE OPERATIONS - STATISTICS
20	FIRE OPERATIONS - 2019 IN REVIEW
22	FIRE OPERATIONS - SPECIAL TEAMS
24	FIRE OPERATIONS - FIRE PREVENTION
26	FIRE OPERATIONS - COMMUNITY OUTREACH
28	FIRE STATIONS
32	PROMOTIONS
33	RETIREMENTS
34	AWARDS
35	ANNUAL AWARD WINNERS AND EMPLOYEES OF THE MONTH

MESSAGE

From the Fire Chief

To The Citizens and Businesses of Seminole County:

Seminole County Fire Department (SCFD) celebrated its 45th anniversary in October of 2019. From its inception in 1974, SCFD has grown to an all hazards fire department that provides emergency services for unincorporated Seminole County and the cities of Altamonte Springs, Casselberry and Winter Springs, serving a population of over 335,000.

Station 11 that serves Altamonte Springs is in the planning stage for replacement and a new Station 39 is in the planning stage and will service the western portion of the county along State Road 46. In the spring of 2019, Station 29 held an open house for the community in celebration of its opening for service in late 2018.

Over 126,497 training hours were conducted at our Fire Training Center in 2019 to ensure our firefighters were well versed in the numerous functions of their jobs when faced with natural disasters, fires and emergency medical services. Training and safety initiatives included the Tactical Incident Command Simulator and the Cancer Risk Reduction initiative. SCFD's Fire Training Center delivered National Fire Academy, state and local level courses to firefighters throughout the state and county.

The Emergency Communications Center transitioned to a new state-of-the art computer aided dispatch (CAD) system. This CAD/Mobile system was a 2 year project and was placed in service in 2019. The new CAD also allowed for the implementation of PulsePoint, a life-saving application in which CPR trained citizens can receive alerts and deliver assistance for residents that experience sudden cardiac arrest in a public location. SCFD's Emergency Communications Center staff handled over 69,000 calls for service in 2019. These calls resulted in over 21,000 EMS transports and over \$148,281,988 million dollars of property saved on structure fire responses.

SCFD's Community Outreach Office taught 2,259 residents in Hands-Only CPR and the use of an automated external defibrillator. SCFD also installed 403 smoke alarms in homes in need and participated in numerous other educational activities.

In closing, going into 2020, SCFD remains committed to preserving the trust of our citizens by ensuring appropriate training, reliable and timely service and quality care. I would like to thank our staff for a job well done this year; and, on behalf of our entire staff, I would like to also thank our County Manager and Board of County Commissioners for their continued support of the Fire Department. Finally, as an agency, we would like to thank the citizens and businesses of Seminole County for their ongoing support. The alliance of community working together to assist each other in times of need is to be commended and is appreciated by our entire staff.

Mark W. Oakes
Fire Chief



Mission

5 Minute Response Time | Trained Personnel
Adequate Resources | Constant Prevention
Go Home Safe

Creed

Honor Those You Work For.
Respect Those You Work With.
Serve Those Who Work For You.

Purpose

Ready To Respond.
Willing To Care.
Trained To Make A Difference.

Seminole County Fire Department provides all hazards emergency services covering 344 square miles to:

Seminole County Unincorporated Area
and the Cities of

Population – 225,266
Altamonte Springs – 44,143
Casselberry – 28,757
Winter Springs – 37,312

Total service area population

335,478*

**1ST RESPONSE AGREEMENTS (CLOSEST UNIT RESPONDS)
ARE IN PLACE WITH THE CITIES OF:**

Lake Mary – 17,479

Longwood – 15,561

Oviedo - 41,860

Sanford - 61,448

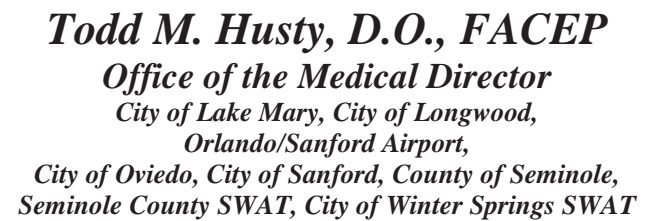
TOTAL

136,348

**SEMINOLE COUNTY ALSO HAS MUTUAL AID AND FIRST RESPONSE AGREEMENTS WITH
THE ORLANDO SANFORD INTERNATIONAL AIRPORT AND BORDERING COUNTIES.**

* Source: U.S. Census Bureau, July 20, 2019 Estimates

Office of the Medical Director



Greetings from the Seminole County EMS Medical Directors,

The county and the municipalities along with their Fire Chiefs have chosen and promote EMS medical direction that includes having small, face-to-face meetings with all fire department personnel. We conduct 6 to 8 meetings per month which means we see everyone, once a quarter. The meetings are part quality assurance, part training and part open discussion. Through the review of actual EMS calls, we find questions, confusions and problems with our protocols. Everyone in the system looks at these as opportunities to improve. Our findings become part of the next quarter's medical director meetings.

But our advanced protocols would not work if it were not for the EMTs and Paramedics that are dedicated to learning more, taking on more responsibility and providing the highest level of pre-hospital care. Yes, the medical direction team of John Murray, MD, Mark Wechsler, PA, Stan Haimes, MD and myself is important. Protocols are important. But the secret sauce is dedicated personnel. They are the ones that really make this work. Seminole County is fortunate, very fortunate, to have EMTs and Paramedics that are always willing to step it up a notch. The medical direction team is fortunate to be able to work with such a talented and dedicated group. It makes our jobs much easier and very rewarding.

John W. King

3040 S Tuskawilla Rd, Oviedo, FL 32765 407-679-6794 (office) 407-679-3554 (fax)

Administration Finance

EMERGENCY COMMUNICATIONS

Personnel Services: \$2,451,978
Operating Expenditures: \$1,208,184
Internal Charges: \$165,934
Capital Outlay: \$1,015,417
Grants & Aids: \$61,239

EMS PERFORMANCE MANAGEMENT

Operating Expenditures: \$278,447
Internal Service Charges: \$11,586

EMS/FIRE/RESCUE

Personnel Services: \$49,580,342
Operating Expenditures: \$4,893,302
Internal Service Charges: \$6,604,087
Capital Outlay: \$3,634,365
Grants & Aids: \$47,428
Interfund Transfers Out: \$1,067

FIRE PREVENTION BUREAU

Personnel Services: \$794,493
Operating Expenditures: \$27,141
Internal Service Charges: \$45,540
Capital Outlay: \$68,742

FIRE PROTECTION FUND

Fire Station 29 (Aloma Ave): \$108,731
Fire Station 11: \$119,258

IMPACT FEE

Fire Station 29
(Aloma Ave): \$498,497

TOTAL BUDGET

\$70,889,293



**1 Cent Sales
Tax at Work**

In 2019 the one cent sales tax provided funding for the department to purchase:

STATION VEHICLES:

2 New Rescues..... \$594,712
Stations 12 & 21

FLEET VEHICLES:

Ford F250..... \$46,338

Planning & Analytics Information Technology & Communications

Computer Aided Dispatch Team



Emergency Communications Annual Calls 2019													
	JAN	FEB	MAR	APR	MAY	JUN	JUL	AUG	SEP	OCT	NOV	DEC	2019
Medical	4,197	3,963	4,334	4,065	4,432	4,156	4,215	4,118	4,223	4,434	4,283	4,407	50,827
Fire	776	604	690	711	814	807	864	791	727	739	768	775	9,066
Miscellaneous	541	537	559	572	682	606	587	569	607	637	544	543	6,984
Animal Services	70	48	75	93	103	122	83	53	79	53	63	54	896
Water Department	20	8	16	11	29	15	21	13	16	13	11	10	183
Traffic Engineering	19	24	16	21	30	34	27	28	19	19	18	17	272
Public Works	7	11	18	29	41	26	24	21	8	29	14	15	243
Fleet	45	38	41	37	32	35	46	39	44	40	45	24	466
LEA	19	23	30	33	35	36	48	30	23	28	21	28	354
Facilities	12	15	17	10	22	26	24	11	18	13	16	10	194
TOTAL	5,706	5,271	5,796	5,582	6,220	5,863	5,939	5,673	5,764	6,005	5,783	5,883	69,485

Emergency Communications

Emergency Communications

Major Project: Computer Aided Dispatch

A new era of public safety operations commenced in Seminole County this year as the Seminole County Fire Department (SCFD) successfully transitioned to a new, state-of-the-art computer-aided dispatch system, CAD/Mobile. This \$3.2 million dollar system is the principal application used to connect all relevant public technology programs utilized within Seminole County, including: 9-1-1, radio, mapping, mobile data computers, and records management.

SCFD can now precisely measure response times and identify operational efficiencies related to each step of the dispatch process, ultimately resulting in saving life-critical seconds for residents and visitors.

Implementation of this new system allows SCFD to utilize a single application, providing countywide situational awareness, maximum operational effectiveness through real-time communications and the ability to make dynamic decisions regarding the allocation and deployment of resources. System activities include: 911 calls, dispatching fire/EMS to incidents, command and control of resources, including geographical tracking of apparatus, alerts and warnings regarding hazardous situations and system-wide notifications of serious incidents.



Under the direction of the Seminole County Board of County Commissioners, project research and development began in July 2017. The State of Florida appropriated \$2 million dollars towards the overall system, which allowed the County to effectively and efficiently manage the project in less time.

PulsePoint was also included in the new CAD upgrade.

This Division manages:

- Centralized First Response Emergency Dispatching (All Fire Departments within Seminole County)
 - Emergency Medical Dispatch (EMD)
 - Emergency Fire Dispatch (EFD)
- Non-emergency calls
- After Hours Calls – Animal Services, Public Works, Environmental, Fleet and Facilities

Fire Support



This Division manages:

- Facilities
- Fleet
- Logistical Warehouse
- Capital Project Management

New Fire Stations

Station 11 Relocation

In coordination with the City of Altamonte Springs, a new Seminole County Fire Station 11 is planned for construction near the Sun Rail Station on Ronald Reagan Blvd. and S.R. 436.

Station 39

SCFD procured five separate parcels off of 1st St. and Orange Blvd. in Sanford for a future 4 bay fire station. This station will house an engine, tower/ladder, rescue, tanker and other equipment and is scheduled to go out for design in 2020.

Professional Standards and Training



Training Hours Per Station

STATION	TRAINING HOURS
Station 11	6,282
Station 12	9,476
Station 13	4,685
Station 14	3,254
Station 16	5,929
Station 21	7,020
Station 22	6,886
Station 23	4,511
Station 24	7,371
Station 25	4,930
Station 26	5,646
Station 27	8,754
Station 29	6,176
Station 34	6,107
Station 35	7,939
Station 36	6,377
Station 41	5,845
Station 42	5,849
Station 43	5,573
Station 65	1,957

Class 1901
Graduation Photo



126,497 Hours of Training

TRAINING HOURS BY CATEGORY

Driver/Operator Training – 23,000

EMS Training – 13,357

Firefighter Training – 43,837

Hazardous Materials Training – 5,326

Officer Training – 23,977

Recruit Training – 11,520

Training Drills – 5,480

Training Innovations

Training Center – Tactical Incident Command Simulator

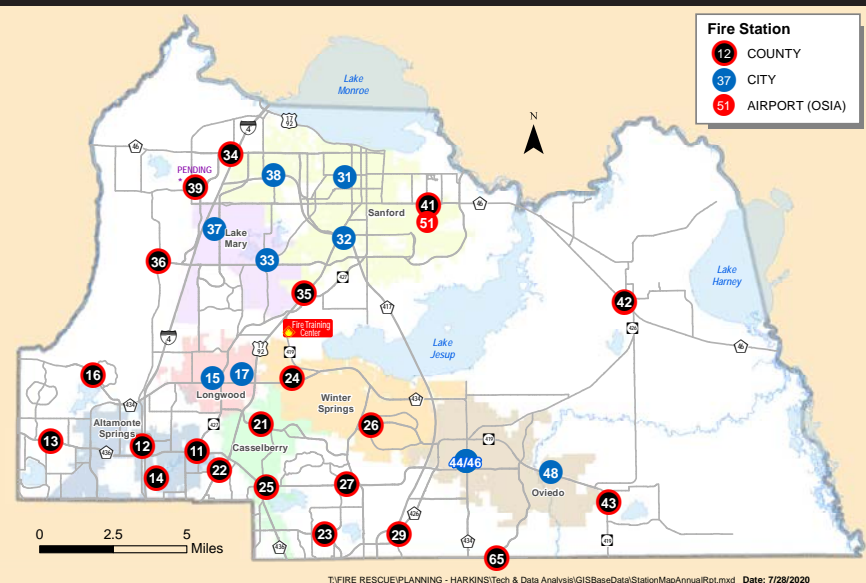
Safety – Cancer Risk Reduction Initiative



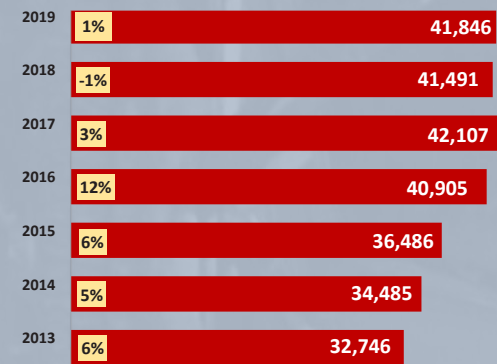
Operations Statistics



Seminole County Fire Department Stations (includes all agencies)



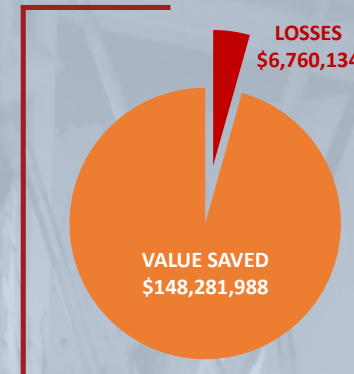
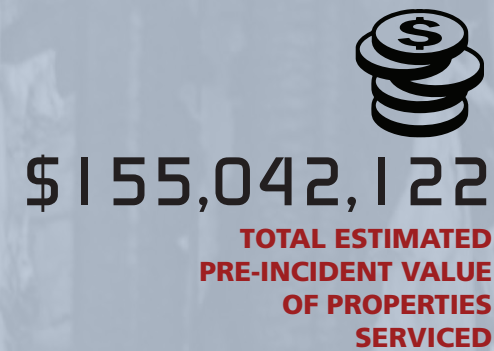
Incidents have increased from 2013
25%



of Incidents

YEARLY TOTALS

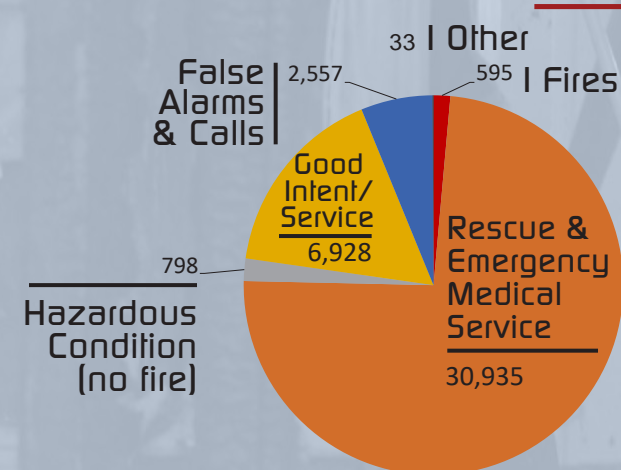
Statistics



AVERAGE RESPONSE CALENDAR YEAR



2012	0:05:40
2013	0:05:42
2014	0:05:51
2015	0:05:51
2016	0:05:26
2017	0:05:28
2018	0:05:10
2019	0:05:09



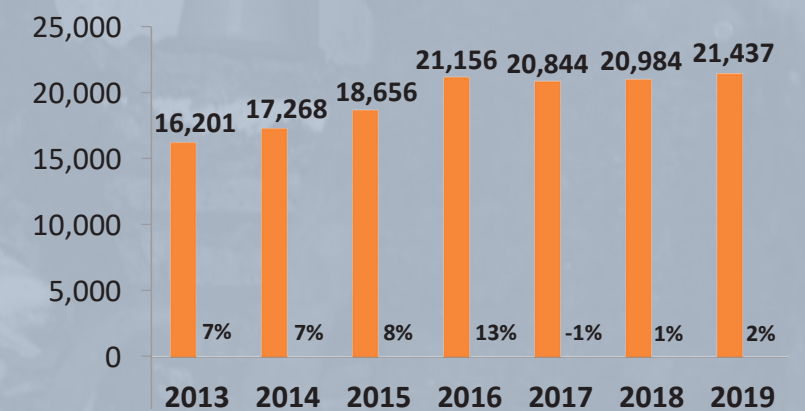
Incident Type

YEARLY TOTAL

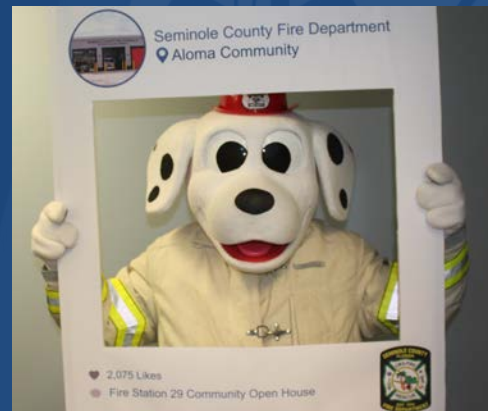
FIRE FATALITIES CALENDAR YEAR



2013	4
2014	3
2015	1
2016	3
2017	4
2018	0
2019	4



Operations & Events



Community Open House at Fire Station 29

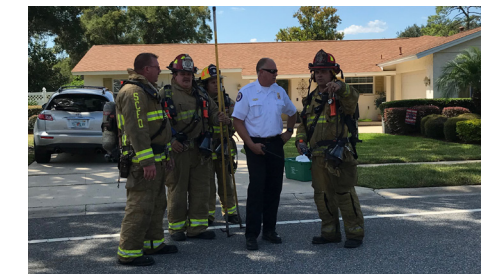


2019 Alarms

Fifth Street Fire



Tollgate Trail Fire



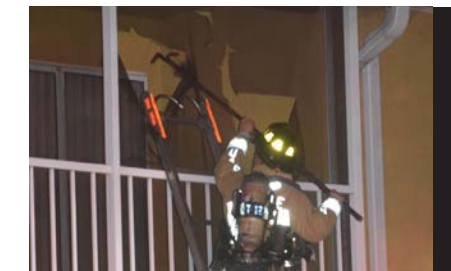
Belevedere Fire



Corporate Square Fire



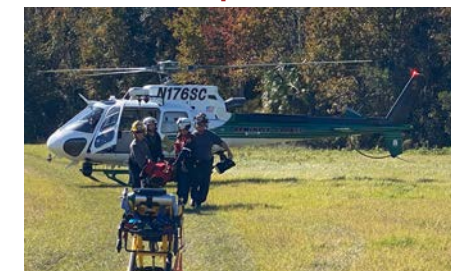
Creekwater Fire



Grassy Point Fire



Trails Response



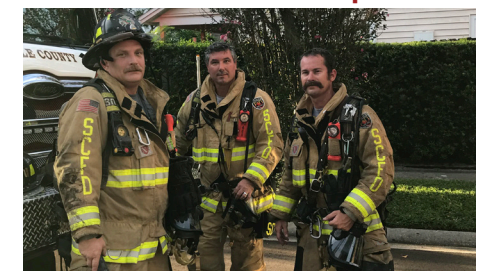
Extrication



Convenience Store



Revelwood Loop Fire



Operations

Hurricane Dorian Assistance



Citizens Fire Academy



Wekiva Elementary Egg Drop

Wildland Burn

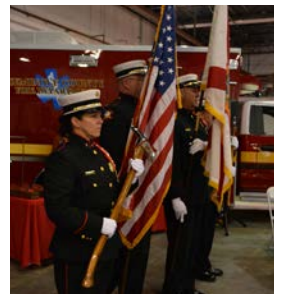


Special Teams

Bike Team



Honor Guard



Special Hazards Operations Team



Urban Search & Rescue - Task Force 4, Swiftwater



Other Special Teams:

Candidate Physical Ability Test Proctors, Tower Team and Prescribed Burn Team

Fire Prevention

Fire Prevention

2019 STATISTICS:

Fire Protection System Plan Reviews – 668

Building Plan Reviews – 2,021

Site Plan Reviews – 523

New Construction Inspections - 1,396

FIRE INVESTIGATIONS: 68

LARGE PROJECTS IN 2019

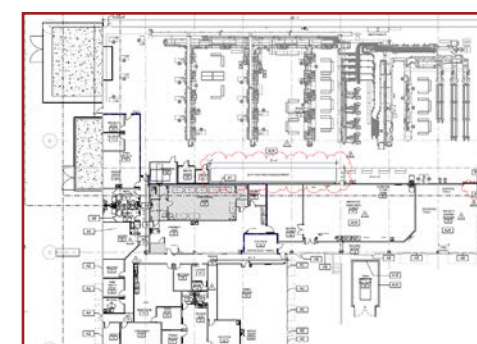
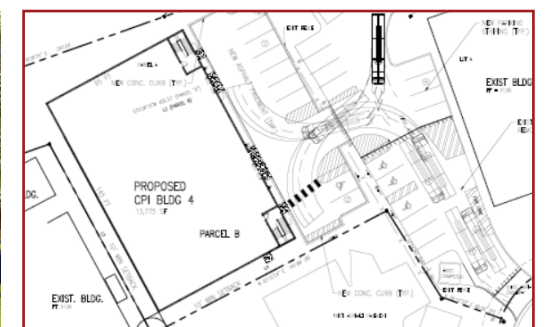
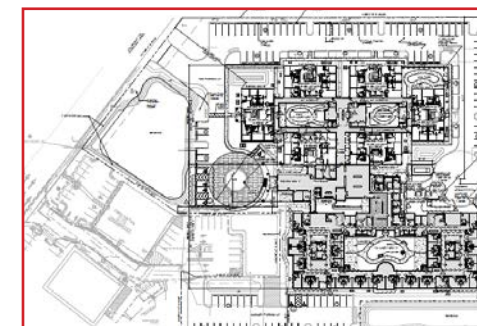
Strive at Fern Park Memory Care - 3 story, 14,000 sq. ft.

Heathrow ER, Central Florida Regional - 10,999 sq. ft.

Midway Commerce Center - 2 story, 14,874 sq. ft.

BrioVA RX - Office, Warehouse, Assembly 38,070 sq. ft.

The Blake Apartments - 10 Buildings, 3 Stories; 30,822-37,425 sq. ft.



Community Outreach Events



Honorary Firefighter Alexis



All Souls Catholic School Donation



Geneva 4th of July Parade



American Red Cross Smoke Alarm Rally



Christmas Toy Donations



Citizens Fire Academy Extrication Demo



Smoke Alarm Installation



Firehouse Subs H2O for Heroes



Gymnast Meets SCFD Hero



Heroes Memorial Day Remembrance Ceremony



Home Depot Safety Day



Leadership Seminole Public Safety Day



Oakland Hills Red Cross Smoke Alarm Rally



Fire Prevention Week Proclamation



Safe Kids Day



Femmes De Coeur Donation



Citizens Fire Academy Graduation



Community Outreach

Citizen Contacts - 299,917

Pulse Point Implemented - On October 22, 2019 SCFD launched a life-saving application in which CPR trained individuals can receive alerts for patients that are experiencing sudden cardiac arrests in a public location. The location-aware application will alert users in the vicinity of the need for CPR simultaneous with the dispatch of advanced medical care. The application also directs these potential rescuers to the exact location of the closest AED. It is proven that early intervention CPR gives the patient the best chance of survival.

Smoke Alarms - 403 were installed through the SCFD and American Red Cross partnership in the communities of Unincorporated Goldsboro, Oakland Hills and Palm Valley.

Save a Life Seminole - 2,259 trained in Hands-Only CPR & AED program at high schools, businesses, homeowner's associations and local hospitals.

Child Passenger Safety - 38 Seats

Citizens Fire Academy - 15

Pool Safety Campaign - 420



Background photo: Save a Life Seminole at Lake Howell High School

Fire Stations

STATION
11



Serving Altamonte Springs
175 Newburyport Avenue • Altamonte Springs

Unit Responses:
Engine 11 – 2,217 Boat 11 – 7
Rescue 11 – 2,518
Woods 11 – 29
ATV 11 – 3



STATION
12



Serving Altamonte Springs
325 Douglas Avenue • Altamonte Springs

Unit Responses:
Engine 12 – 3,621
Rescue 12 – 3,650
Tower 12 – 1,751
Battalion 1 – 987



STATION
22



Serving Fern Park
7122 US Highway 17-92 • Casselberry

Unit Responses:
Engine 22 – 1,828
Rescue 22 (Bariatric) – 2,101



STATION
23



Serving Howell Branch
4810 Howell Branch Road • Winter Park

Unit Responses:
Engine 23 – 1,930
Rescue 23 – 1,863



STATION
13



Serving Forest City/Bear Lake
3860 E State Road 436 • Apopka

Unit Responses:
Engine 13 – 3,520
Rescue 13 – 2,949



STATION
14



Serving Altamonte Springs
600 Hattaway Drive • Altamonte Springs

Unit Responses:
Engine 14 – 1,616
Rescue 14 – 960



STATION
24



Serving Winter Springs
102 Moss Road North • Winter Springs

Unit Responses:
Engine 24 – 1,636 Tech 1 – 496
Rescue 24 – 1,651 Tanker 24 – 45
Rescue 28 – 135
Rehab – 69



STATION
25




Serving Casselberry
1055 Red Bug Lake Road • Casselberry

Unit Responses:
Tower 25 – 2,116
Rescue 25 – 2,076




STATION
16



Serving Wekiva Springs/Sabal Point
930 Wekiva Springs Road • Longwood

Unit Responses:
Engine 16 – 1,821
Rescue 16 – 1,965
Woods 16 – 24



STATION
21




Serving Casselberry
681 Seminola Boulevard • Casselberry

Unit Responses:
Engine 21 – 1,811
Rescue 21 – 1,833
Boat 21 – 6



STATION
26



Serving Winter Springs/Tuscowilla
850 Northern Way • Winter Springs

Unit Responses:
Engine 26 – 1,233
Rescue 26 – 1,220



STATION
27




Serving Winter Springs/Red Bug
5280 Red Bug Lake Road • Winter Springs

Unit Responses:
Engine 27 – 2,325
Rescue 27 – 1,974
Tower 27 – 937
Battalion 2 – 727



Fire Stations


STATION
29




Serving Jamestown/Aloma Woods
2300 Via Loma Drive • Oviedo

Unit Responses: Opened 11/21

Engine 29 – 883
Rescue 29 – 913
Woods 29 – 22



STATION
34




Serving Paola/Sanford
4905 Wayside Drive • Sanford

Unit Responses:

Engine 34 – 2,102
Rescue 34 – 1,921
Woods 34 – 39

Boat 34/39 – 13
Tanker 34 – 53
ATV 34 – 4



STATION
43



Serving Chuluota
110 East 7th Street • Chuluota

Unit Responses:

Engine 43 – 512
Rescue 43 – 508
Woods 43 – 32
ATV 43 – 5



STATION
35



Serving Sanford/Five Points
201 West County Home Road • Sanford

Unit Responses:

Engine 35 – 1,568
Squad 2 – 1,124
Boat 35 – 14
Rescue 35 – 1,520

Woods 35 – 43



STATION
36




Serving Lake Mary/Heathrow
6200 West Lake Mary Blvd • Lake Mary

Unit Responses:

Engine 36 – 2,119
Rescue 36 – 1,773
Battalion 3 – 558



STATION
65




Serving UCF/Carillon
4999 North Orion Boulevard • Orlando

Seminole County Fire Department and Orange County Fire Rescue have a joint station at the Orange/ Seminole County border. The station sits on the edge of the University of Central Florida across from the Knights football stadium. The two agencies have a first response agreement allowing them to respond seamlessly into each other's jurisdiction.

Unit Responses:

Seminole County Rescue 65 Total – 1,599
Orange County jurisdiction – 555
Seminole County jurisdiction – 1,044

Orange County Engine 65 Total – 1,316
Orange County jurisdiction – 418
Seminole County jurisdiction – 898



STATION
41



Serving Midway
3355 East State Road 46 • Sanford

Unit Responses:

Engine 41 – 1,080
Rescue 41 – 1,359
Woods 41 – 22
Battalion 4 – 275

ATV 41 – 8



STATION
42



Serving Geneva
320 West SR 46 • Geneva

Unit Responses:

Engine 42 – 578
Rescue 42 – 525
Woods 42 – 73
Boat 42 – 8

ATV 42 – 4
Tanker 42 – 55



Station and Scene Photos:



Promotions



EMERGENCY COMMUNICATIONS DISPATCHER TO EMERGENCY COMMUNICATIONS ASSISTANT SUPERVISOR

Beth A. Facello
Pereisha N. Felder

FIREFIGHTER TO LIEUTENANT

Percy L. del Aguila, Sr.	Paul J. Hammerl
Stephen N. Armstrong	Joshua A. Marzolf
Anthony J. Bowman	Diane G. Meadows
Jason D. Cabal	Jason C. Metivier
James F. DePierro	Ryan M. Pullan
Benjamin J. Fulton	Steven B. Vasey
Marcus A. Gombs	Shawn C. Youngblood
Curtis G. Halcom	Jazlyn A. Zombo

FIRE INSPECTOR TO FIRE MARSHAL

Christina Diaz

LIEUTENANT TO BATTALION CHIEF

Chad A. Chorak	Jolene O. Joyce
David M. Grant	James L. Monahan
Matthew Hettler	Jason T. Prather
Joel J. Herrera	

BATTALION CHIEF TO ASSISTANT CHIEF

Bradley L. Hawver
John R. Thibert
Samuel W. Thurmond

ASSISTANT CHIEF TO DEPUTY CHIEF

Matthew W. Kinley
Jeffrey A. Ward



Retirements



RETIREMENTS IN 2019

Lieutenant Kim L. Drury - January 4, 2019
Lieutenant Alisa A. Keyes – January 31, 2019
Firefighter Matthew L. Hool February 27, 2019
Senior Financial Analyst Deborah E. Selsor – February 28, 2019
Staff Assistant Nancy G. Lodge – March 1, 2019
Lieutenant Jeffrey J. Thomas – March 30, 2019
Staff Assistant Connie J. Kreinbring – April 1, 2019
Battalion Chief Corey S. Green – April 2, 2019
Assistant Chief Mark A. Hall – May 3, 2019
Resource Manager David W. O'Brien – June 7, 2019
Lieutenant Donald L. McBryde – June 8, 2019
Firefighter Russell A. Kay – June 22, 2019
Lieutenant William L. Nighswonger – June 30, 2019
Lieutenant Timothy E. Grenz – June 30, 2019
Firefighter Eric W. Borns – July 3, 2019
Lieutenant John O. Bacon – July 31, 2019
Battalion Chief Jay Steiner – August 31, 2019
Lieutenant Mitchell T. Ransom – August 31, 2019
Battalion Chief Dennis P. Miller – September 30, 2019
Lieutenant Darrell Rudd – October 12, 2019
Battalion Chief Timothy G. Nicholson – October 17, 2019
Firefighter Tomas Reyes – October 30, 2019



Awards

LIFE SAVING AWARDS

43/C Child Drowning – LT Thomas Martin, LTP Thomas Imeson, FFP David Bentley, FF Mark Laverty, FF David Perry

27/A Cardiac Arrest – LTP Timothy Mercure, FFP Jared Rodriquez, FF Ryan Hart, FFP Leonard Thompson, FF Denver Connolly

27/C Cardiac Arrest – LTP Joel Herrera, FFP Charles Morales, FFP Cody Hultgreen, FFP Ryan Hart, FF David Perry

13/B Cardiac Arrest – LTP Edward Ruping, FFP Joshua Jickell, FFP Nicole Strong, FFP Travis Hagerty, FFP Stephen Crossman

36/C Cardiac Arrest – LT Thomas Martin, FFP David Gomez, FF Shannon Dillon, FF Charles Blinco, FFP Hubert Johnston, Retired FF Matthew Hool

24/B Trauma from Assault – FFP Mike Warren, FF Nick Robinson

UNIT TEAM CITATION AWARDS

42/B Plane Crash – AC Michael Johansmeyer, AC Jeff Ward, AC Mark Hall, BCP Rebecca Ward, LTP Stephen Maxwell, LTP Chad Chorak, LTP Jeffrey Lavino, LTP Jason Prather, LTP Matthew Hettler, LTP Michael Scott, LTP Richard Huebner, LTP Anthony Gay, FFP Robert Castlen, FFP Michael Warren, FF Andrew Vick, FF Dustin Schieber, FF Edward Diamond, FFP Christopher O'Neal, FF Brian Kiley, FF Craig Kimmel, FF Marc Rivera, FFP Jack Young, FFP Shawn Youngblood, FF Russell Kay, FF Chad Braden, FF Anthony Bowman, FFP Brian Colley, PIO Sharon Gregory

25/B Childbirth – FFP Jonathan Walker, FF Marisol Esquilin, FFP Matthew Nevins, LTP Mario Mihauch, FF Dylan Fox

36/A Stroke/MVA – LTP Dave Williams, FFP Gregory Baraniak, FF David Jones, FFP John Forehand, FF Michael Lloyd

12/A Structure Fire/Victim – FFP Paul Parisi, FF Michael Hahn, FFP Marcus Gombs, FF Kyle Schnitker, LTP Kevin Welday, FF Michael Sanchez, FFP Matthew Hoggatt, LTP Patrick Criswell, FFP Jason Rappa, FFP Ryan Lewallen

42/A Police Assist/Extrication from House – AC Michael Johansmeyer, BC Phil Kennedy, LT John Hansen, LT Scott Honour, LTP Butch Loudermilk, LTP Andy Johnson, FFP Jamie Johnson, FFP Rob Cruthis, FFP Wyatt Meagher, FFP Mike Blinco, FFP Jason Johnson, FFP Ed Castlen, FFP Colby Harkrader, FFP Matthew Johnson, FF Kevin Beavers, FF Kyle Schnitker, FF Jesse Crews, FF Zachary Bonchack, SC Animal Control Officer Lauren Watts, SC Animal Control Officer Justin Lilly



Annual Award Winners

Chief Officer of the Year - Rebecca L. Ward, Battalion Chief/Paramedic

Lieutenant of the Year - Shane N. Massari, Lieutenant/Paramedic

Paramedic of the Year - Nicole A. Miaoulis, Firefighter/Paramedic

Firefighter of the Year - Benjamin J. Fulton, Firefighter/Paramedic

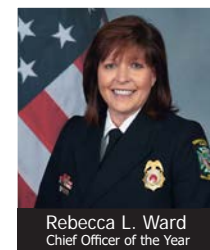
Rookie Firefighter of the Year - Christopher M. Ridge, Firefighter

Emergency Communications Employee of the Year – Pereisha N. Felder, EC Assistant Supervisor

Fire Prevention Employee of the Year – Edward S. Davis, Fire Inspector

SCFD Employee of the Year – Manuel V. Gonzalez, CAD Administrator

Distinguished Service Medal – Patrick B. Criswell, Lieutenant/Paramedic



Rebecca L. Ward
Chief Officer of the Year



Shane N. Massari
Lieutenant of the Year



Nicole A. Miaoulis
Paramedic of the Year



Benjamin J. Fulton
Firefighter of the Year



Christopher M. Ridge
Rookie of the Year



Pereisha N. Felder
Emergency Communications
Employee of the Year



Edward S. Davis
Fire Prevention
Employee of the Year



Manuel V. Gonzalez
SCFD
Employee of the Year



Patrick B. Criswell
Distinguished Service Medal

EMPLOYEE OF THE MONTH

January – Brent Zanca

February – LuWayne Ransom

April – Andrew Johnson

May – Diane Gordon

December – Darlene Robinson

SEMINOLE COUNTY FIRE DEPARTMENT

2019 Annual Report

