



Parks are the place where it all comes together - a sense of community, an appreciation of history and place, and respect for nature.
Seminole County Leisure Services.



**It Starts
in Parks**SM

CAMP LOCATION:

Ed Yarborough Nature Center
3485 N. CR 426, Geneva, FL 32732

Scholarships available through
Seminole County,
The Cuplet Fern Chapter of
Florida Native Plant Society,
and The Audubon Society.

Call 407.665.2211 for
scholarship information.

Register online at:
www.recreation.seminolecountyfl.gov



Week 1: Ages 13-15
Weeks 2-8: Ages 7-12



For more information on the
Natural Lands Program, visit
www.seminolecountyfl.gov/naturallands

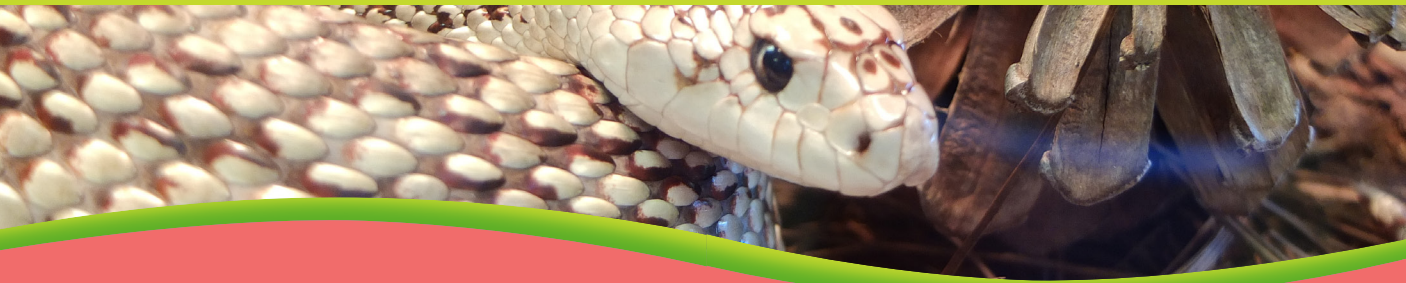


Leisure Services Department

Register online at
www.recreation.seminolecountyfl.gov

For more information,
call 407.665.2211

or go to www.seminolecountyfl.gov/naturallands



SUMMER ADVENTURE CAMP

New This Summer:

Week 1: ages 13-15 Weeks 2-8: ages 7-12

At Eco Adventure Camp you'll have fun while learning about the natural world! Seminole County Greenways & Natural Lands is offering the ultimate camp experience for children interested in nature, science, the environment and preservation. If your child enjoys being outdoors, this is the camp for him or her. Our week long day camps for kids offers hands-on creative programming including hiking, fishing, nature crafts, hands-on experience with plants and animals, projects, experiments, arts and crafts, plus lots of fun and games! Have fun getting to know the amazing creatures that live at the Nature Center.

SUMMER CAMP ECO ADVENTURE SCHEDULE

DATES	SUBJECT	WEEK
June 3 - 7	Biology Bootcamp <i>(ages 13-15 only)</i>	Week 1
June 10 - 14	I Spy (ages 7-12)	Week 2
June 17 - 21	Art in Nature (ages 7-12)	Week 3
June 24 - 28	Water Week (ages 7-12)	Week 4
July 1 - 5 (No camp on the 4th)	Furry Friends (ages 7-12)	Week 5
July 8 - 12	Nature's Builders (ages 7-12)	Week 6
July 15- 19	Edible Adventures (ages 7-12)	Week 7
July 22 - 26	Nature TV (ages 7-12)	Week 8

Campers will spend part of each day in our air-conditioned Nature Center!

Camps held at Ed Yarborough Nature Center,
3485 N. County Road 426, Geneva, FL 32732



Register Today for
**Summer
Eco Camp!**

EXPLORING



LEARNING

FRIENDSHIPS

Prices:
Day Camp: \$132/week
Extended Care: \$15/week

You can now register online!
Go to www.recreation.seminolecountyfl.gov
or call 407.665.2211 for more information.

**Seminole County
Natural Lands Program**
3485 N. CR 426 • Geneva, Florida 32732
(407) 665.2211
www.seminolecountyfl.gov/naturallands