



Rolling Hills Community Park & Roadway Improvements Update Meeting

Lyman High School
January 24, 2024



TONIGHT'S AGENDA

1 Welcome & Introductions

2 Review of Process

3 Current Status

4 Next Steps & Timeline

5 For More Information...



TONIGHT'S AGENDA

- 1** Welcome & Introductions
- 2 Review of Process
- 3 Current Status
- 4 Next Steps & Timeline
- 5 For More Information...



TONIGHT'S AGENDA

1 Welcome & Introductions

2 Review of Process

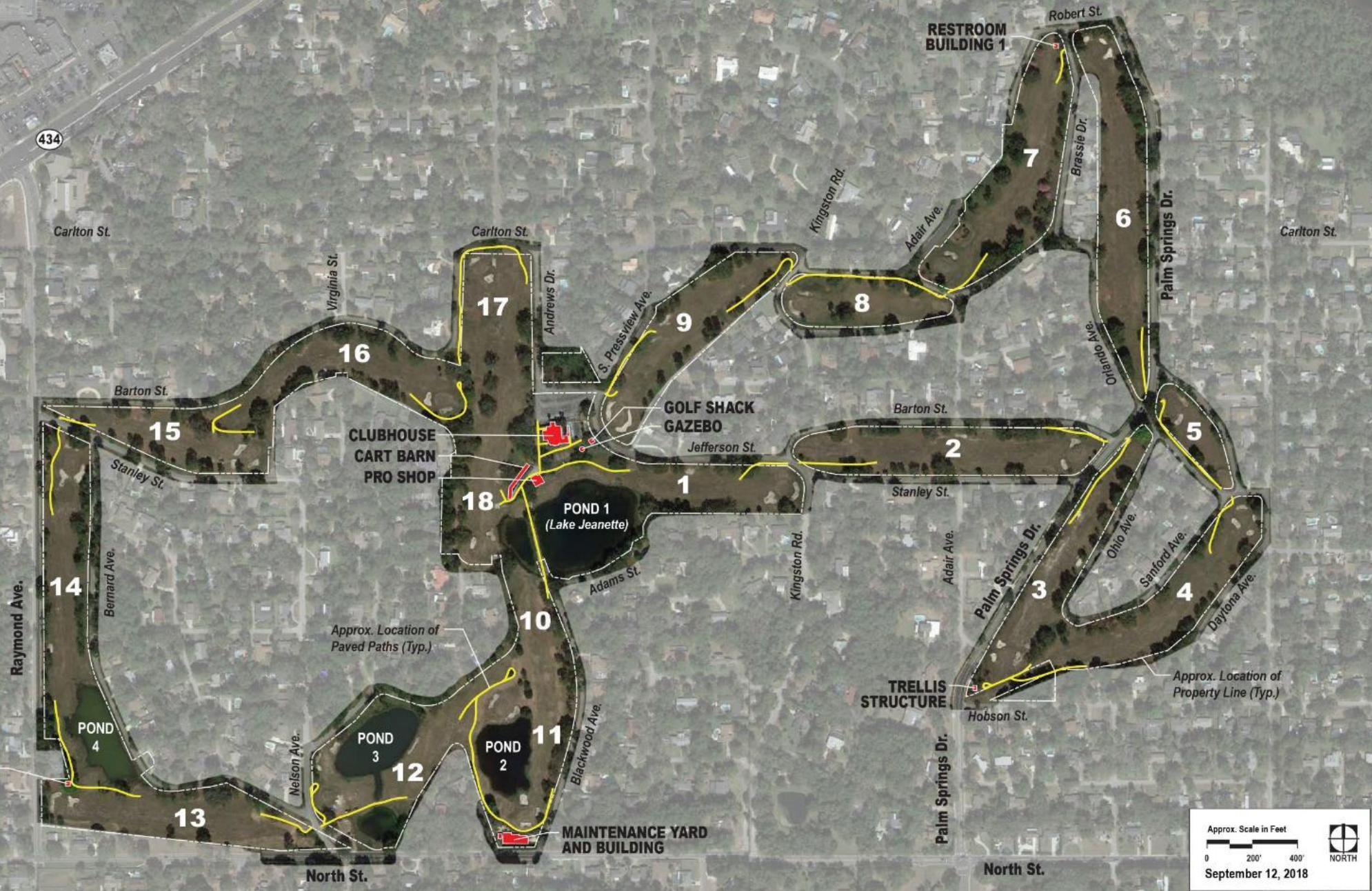
3 Current Status

4 Next Steps & Timeline

5 For More Information...

Rolling Hills Golf Course – Closed June 2014

Property Address:
1749 Art Hagan Place
Longwood, FL 32750



Approx. Scale in Feet
0 200' 400'
September 12, 2018

Rolling Hills Background Community Meetings



Rolling Hills Background

Property Acquired: August 31, 2018



Parks Design Inspiration

Guided by the tradition of Classic Parks Design, Frederick Law Olmsted

Create designs that appear to have evolved through action of natural forces

Emphasize the indefinite edge of space, a sense of great extent beyond, gracefulness of gently modulated terrain

“To refresh and delight the eye, mind and spirit”



Rolling Hills Design Inspiration

Quiet Spaces, Meditation, Introspection and Florida's Natural Landscape



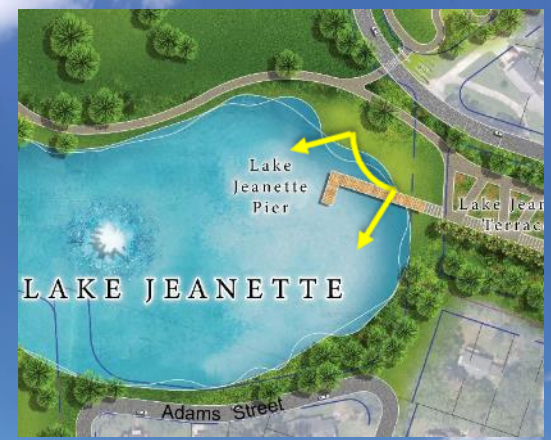
Rolling Hills Design Inspiration

Appreciating Special Moments, Sociable Places and Garden Architecture



New Places for People

Lake Jeanette Pier and Overlook



New Places for People

Lake Jeanette Pier and Overlook



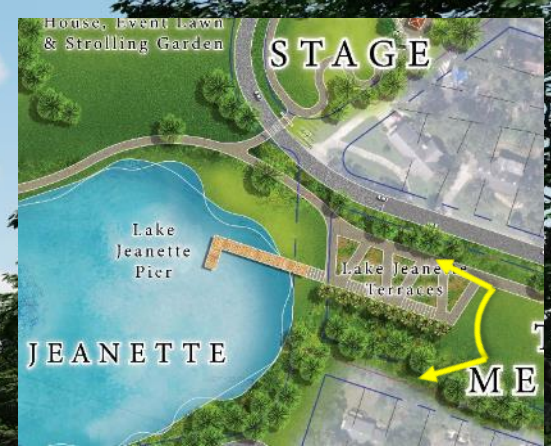
New Places for People

Lake Jeanette Terrace Walk



New Places for People

Lake Jeanette Terrace Walk



New Places for People Trail Experience at Portal Knolls



New Places for People Trail Experience at Portal Knolls



Approved Park Master Plan – Phase One



Passive Park Program

1. Multipurpose Paved Trail (Approx. 4.0 Miles)
2. Landscaping and Earthwork
3. Bridges, Terraces, ADA
4. Pavilions
5. Pier Overlook
6. Secondary Pathways
7. Site Furnishings
8. Parking Renovations and Access
9. Tree Canopy and Landscape
10. Gateways and Signage
11. FCT Grant Requirements



3

Current Status



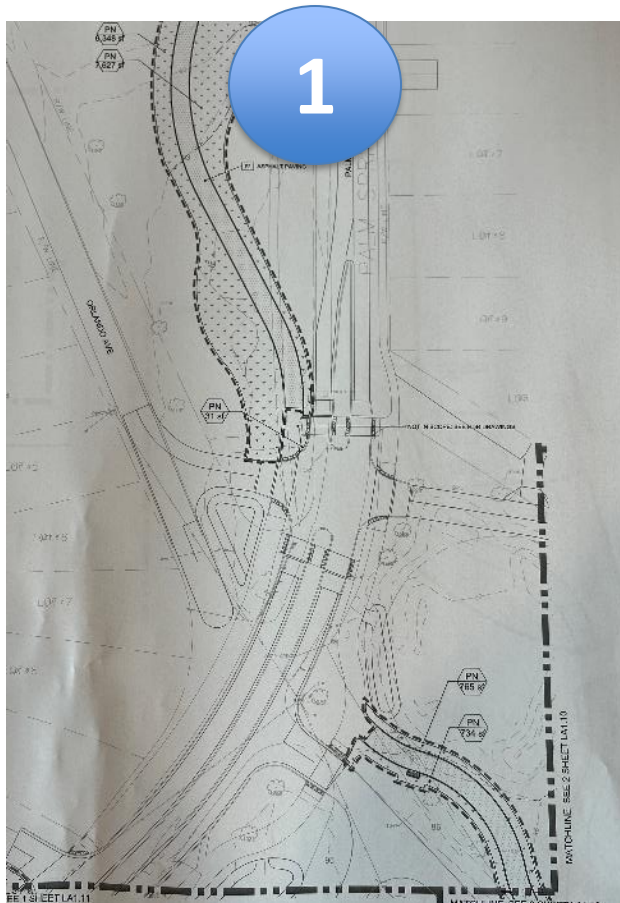
Park Detail Design & Engineering Updates

2024 Updated Park Master Plan – Phase One

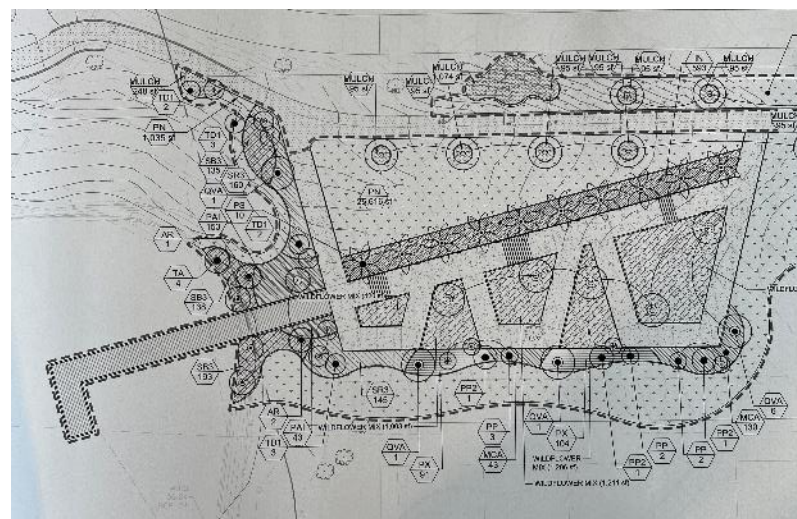
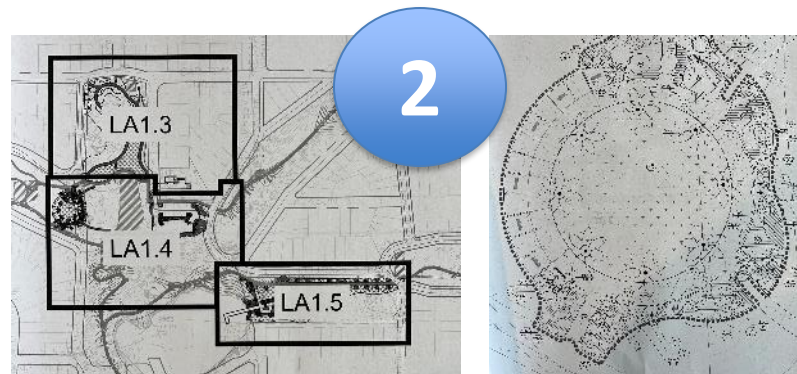


Design Status of 3 Park Construction Sets:

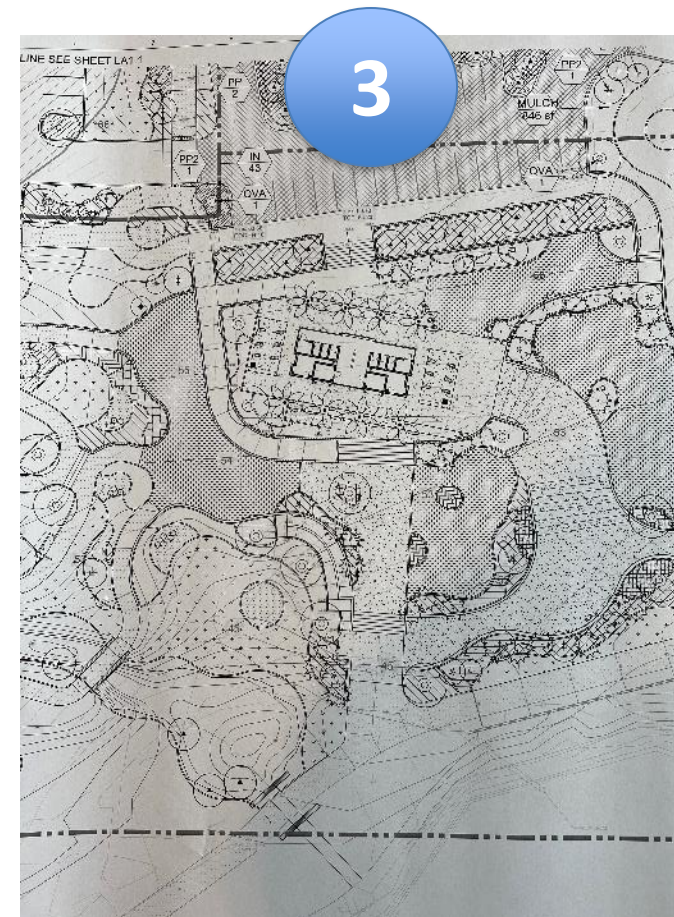
Phase 1 Trail, Phase 1 Amenity Areas and Inclusive Playground



Streets & Trail Package:
Streets, Traffic Calming, ADA Crossings, and the complete 12' Multi-Use Park Trail, Grading, Sod



Rolling Hills Phase 1 Park Amenities:
Several initial feature areas with landscape, hardscape, parking & other furnishings, some secondary trails - 'finished'



Inclusive Playground Feature:
Full Playground with restroom pavilion, play areas, landscape, hardscape, green infrastructure - 'finished'.



ARBORETUM
WALK

Nature Walk

CENTRAL
GATHERING

Art Hagan Place

Future Barrier
Free Inclusive
Playground

The Long
Slope

THE
LANDING

Lake
Jeanette
Pier

Lake Jeanette
Terraces

LAKE JEANETTE

Inclusive Playground Plan View



Inclusive Playground View North



Inclusive Playground View NE



Inclusive Playground View SW



Playground Entrance from Parking



Pavilion & Park Architecture – contemporary Mid-Century Modern



Restroom and Pavilion Building



Restroom Pavilion Gateway to Playground and Park



Pavilion, Playground and Places



Playground Places, Views and Connections



Playground Places, Views and Connections



Play Area Choices and Alternatives for All



The Rolling Hill at Rolling Hills Park! Places for Free Play



Playground Edges: Casual and Informal Respite Places



Transitions to the Park and Green Infrastructure Feature



Playground Edges: Casual Transitions to Rolling Hills Trail



Formal Center Gateway to Rolling Hills Park and Trail





3

Current Status

Park Detail Design &
Engineering Updates

▶ Roadway Detail Design &
Engineering Updates

Parkway Streets, Trail Crossings and Park Working Together



Parkway Streets, Trail Crossings and Park Working Together



Parkway Streets, Trail Crossings and Park Working Together

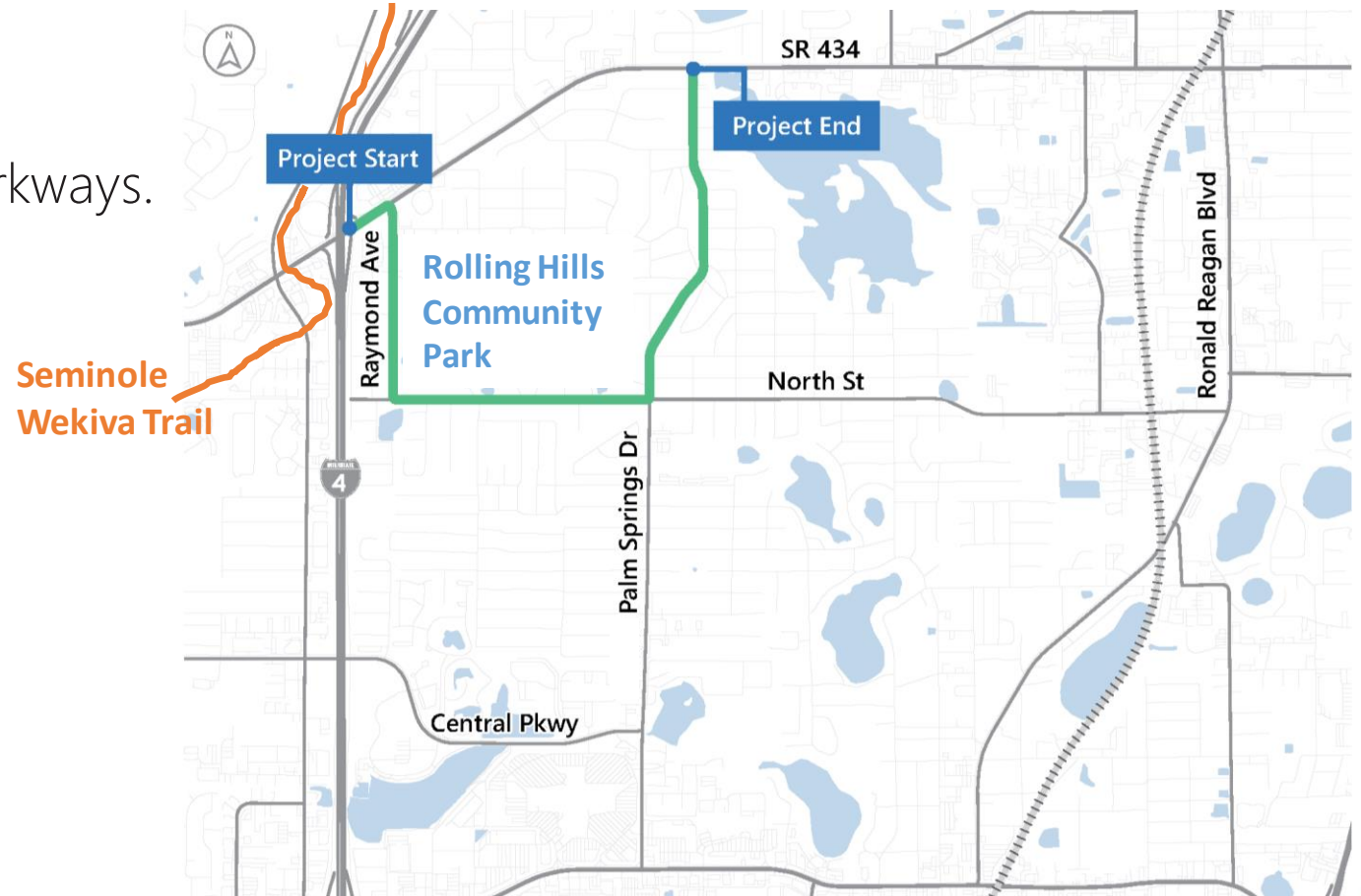


Rolling Hills Area Roadway Improvements Phase 1

Project Location

Roadways are being converted to Parkways.

- Raymond Avenue
- North Street
- Palm Springs Drive



Rolling Hills Area Roadway Improvements Phase 1

PROJECT GOALS

SAFETY



- Sidewalk connections
- Traffic calming
- School crossings

MOBILITY



- Active transportation
- Public friendly
- Trail connections

LIVABILITY



- Green streets
- Beautification
- Landscaping

INCLUDED IMPROVEMENTS



Roundabouts



New Medians and Boulevards with Curves



New and improved sidewalks



Additional Crosswalks



Added Areas of On-street Parking

Rolling Hills Area Roadway Improvements Phase 1



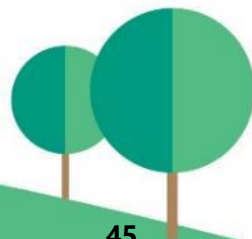
OPEN HOUSE SUMMARY

- November 14, 2019
- Altamonte Elementary School
- Advertised through mailed postcards, flyers at schools, churches, and other locations, NextDoor, Facebook, and email
- 21 comment forms completed
- 93% rated meeting satisfactory or excellent



HYBRID PUBLIC MEETING SUMMARY

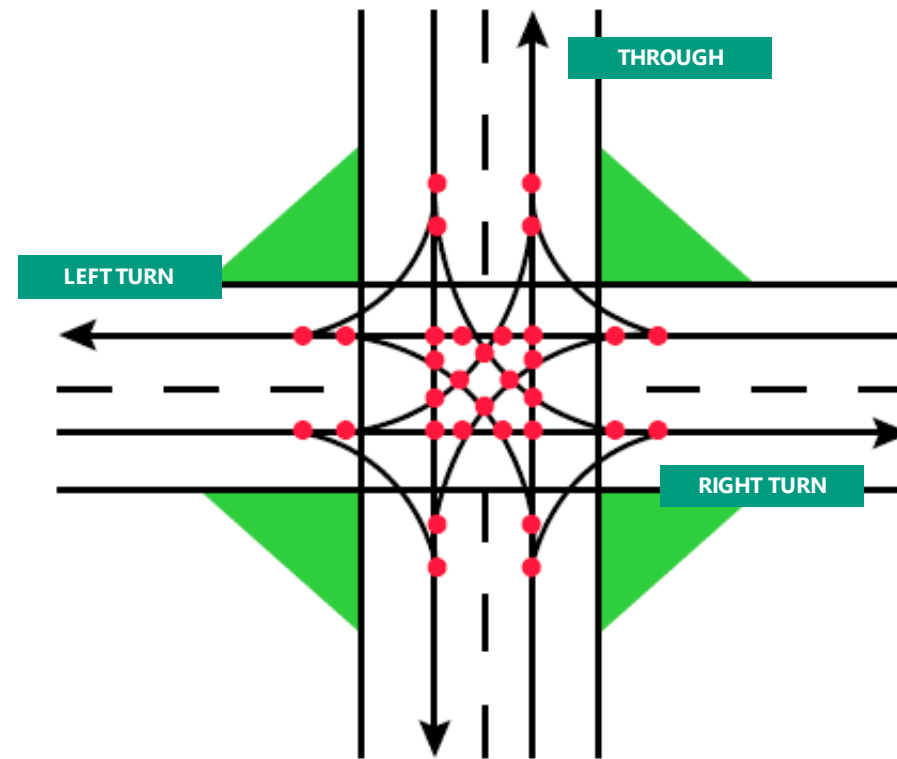
- July 18, 2022
- Waterstone Church and Virtually
- Advertised through mailed letters, project website, and social media
- 27 comment forms completed



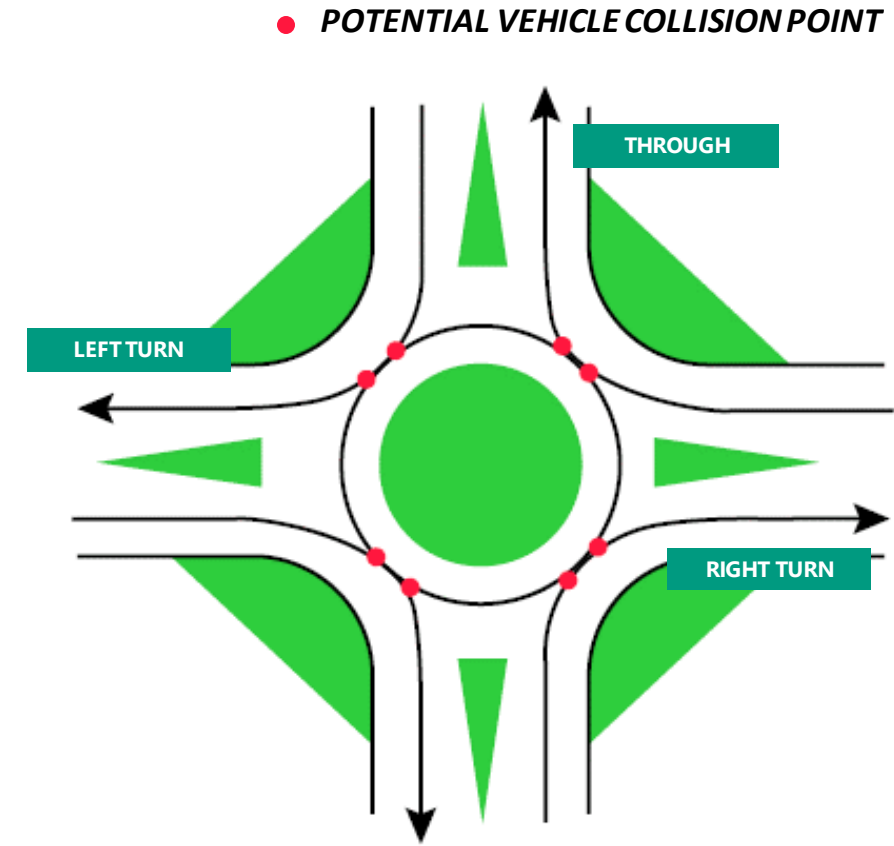
Rolling Hills Area Roadway Improvements Phase 1

Roundabout Safety Benefits

- Up to **90%** fewer fatalities
- Up to **76%** fewer injuries
- Up to **40%** fewer ped-bike crashes



Traditional Signalized Intersection
32 CONFLICTS



Modern Roundabout
8 CONFLICTS

Rolling Hills Area Roadway Improvements Phase 1

Roundabout Mobility Benefits



30-50% INCREASE
in traffic capacity



IMPROVE TRAFFIC FLOW
while maintaining slow speeds



LESS DELAY
waiting at the intersection



REDUCED NEED
for turn lanes

Additional Benefits



TRAFFIC CALMING



REDUCED LONG-TERM OPERATIONAL COSTS



AESTHETICALLY PLEASING LANDSCAPE

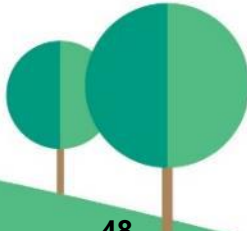


IMPROVED AIR QUALITY



Rolling Hills Area Roadway Improvements Phase 1

Roundabout Placement



Roundabout Placement

- Placed where trails converge



 Trail Network



Roundabout Placement

- Placed where trails converge
- Used on busiest roads



-  Trail Network
-  Major Roadways



Roundabout Placement

- Placed where trails converge
- Used on busiest roads
- Slower traffic
- Safer crossings in two stages

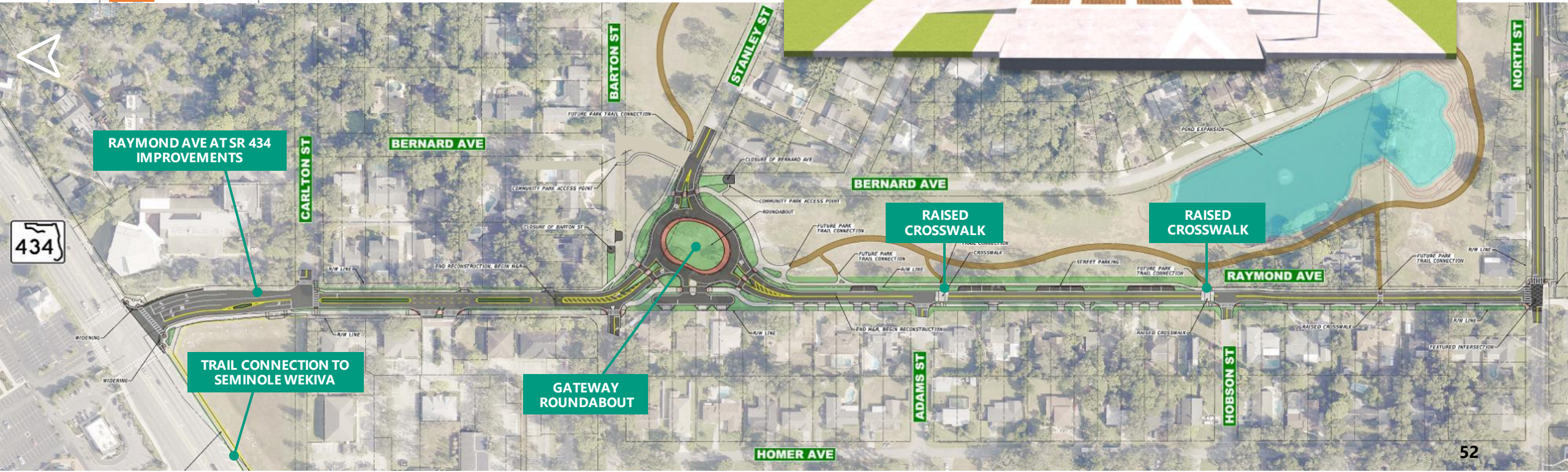
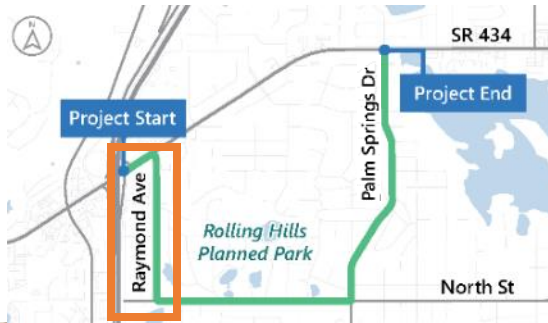


-  Trail Network
-  Major Roadways
-  Roundabout Location

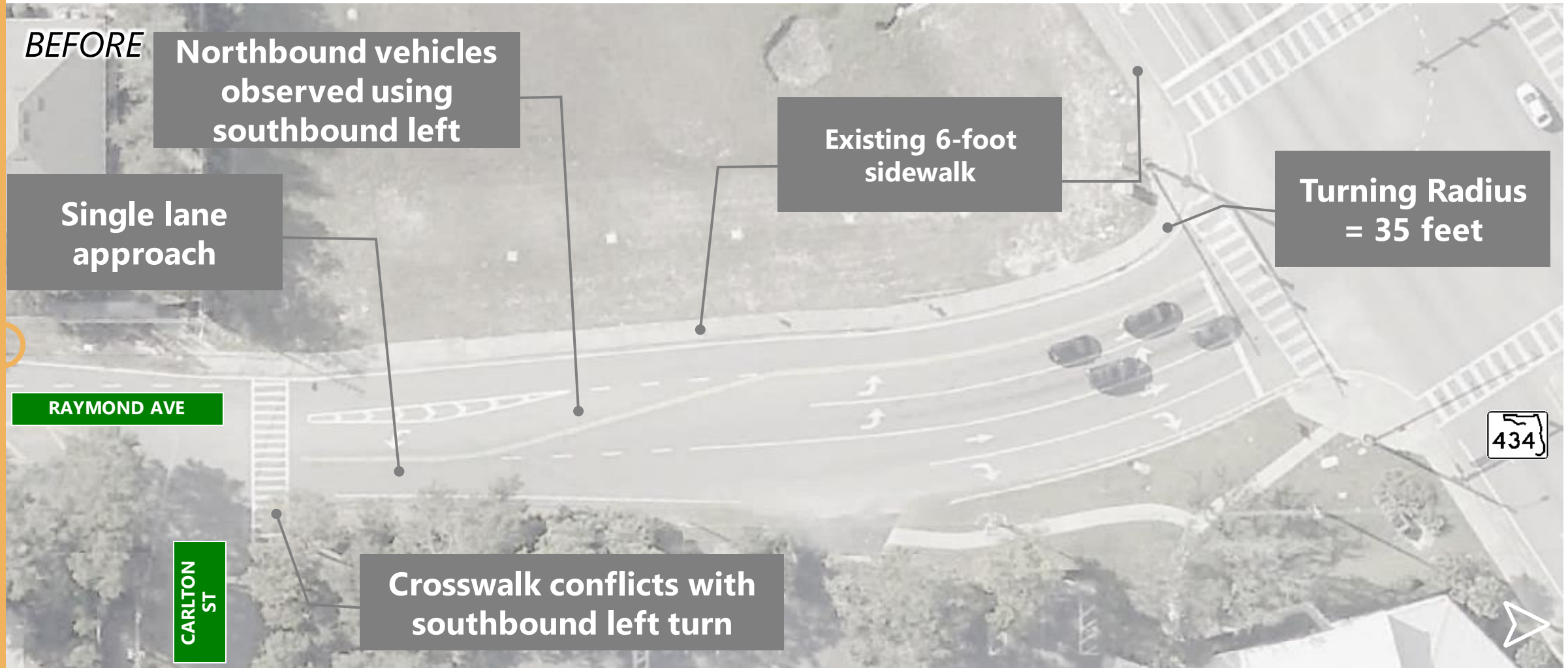


Rolling Hills Area Roadway Improvements Phase 1

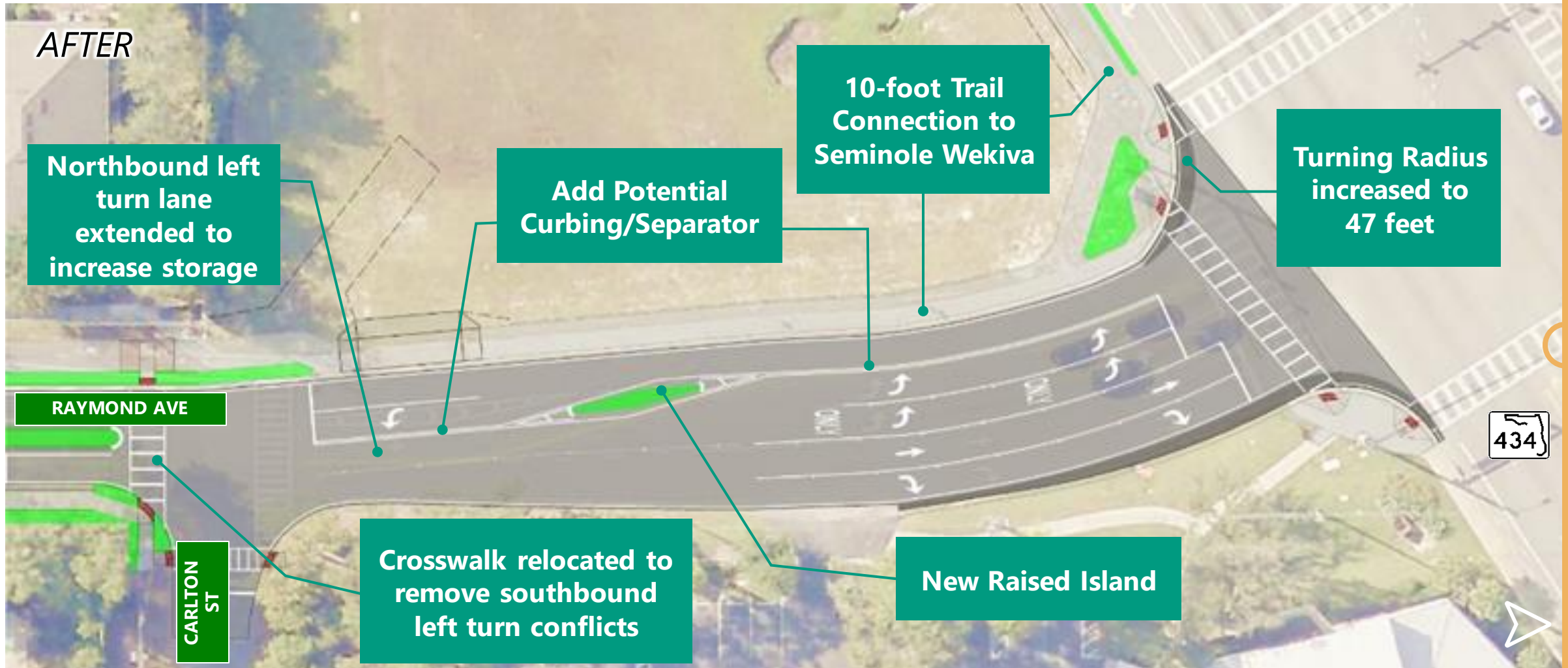
RAYMOND AVENUE



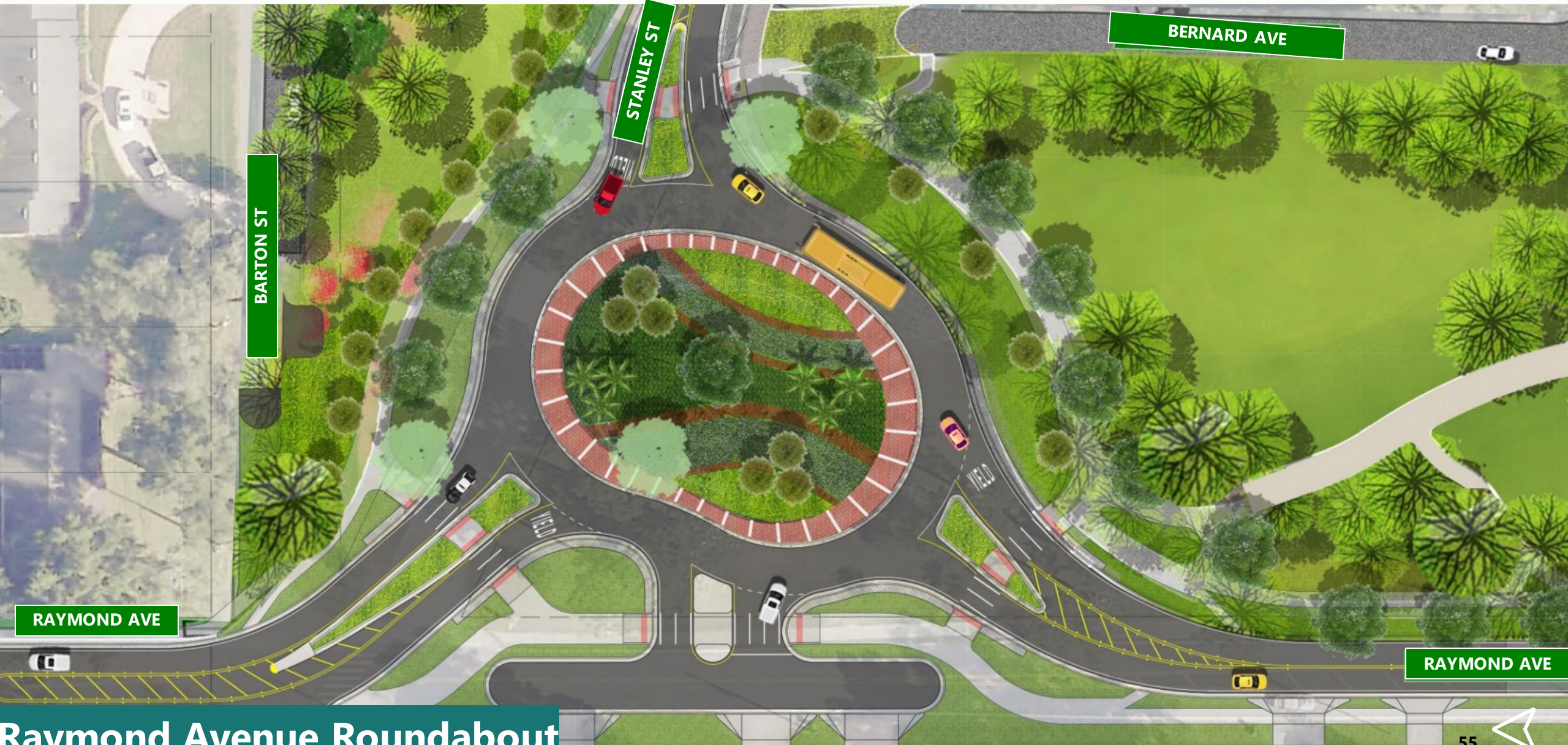
Rolling Hills Area Roadway Improvements Phase 1



Rolling Hills Area Roadway Improvements Phase 1



Rolling Hills Area Roadway Improvements Phase 1



Raymond Avenue Roundabout



Rolling Hills Area Roadway Improvements Phase 1



1 BEFORE



Raymond Avenue Roundabout

Rolling Hills Area Roadway Improvements Phase 1



Raymond Avenue Roundabout

Rolling Hills Area Roadway Improvements Phase 1



2 BEFORE



Raymond Avenue Roundabout

Rolling Hills Area Roadway Improvements Phase 1



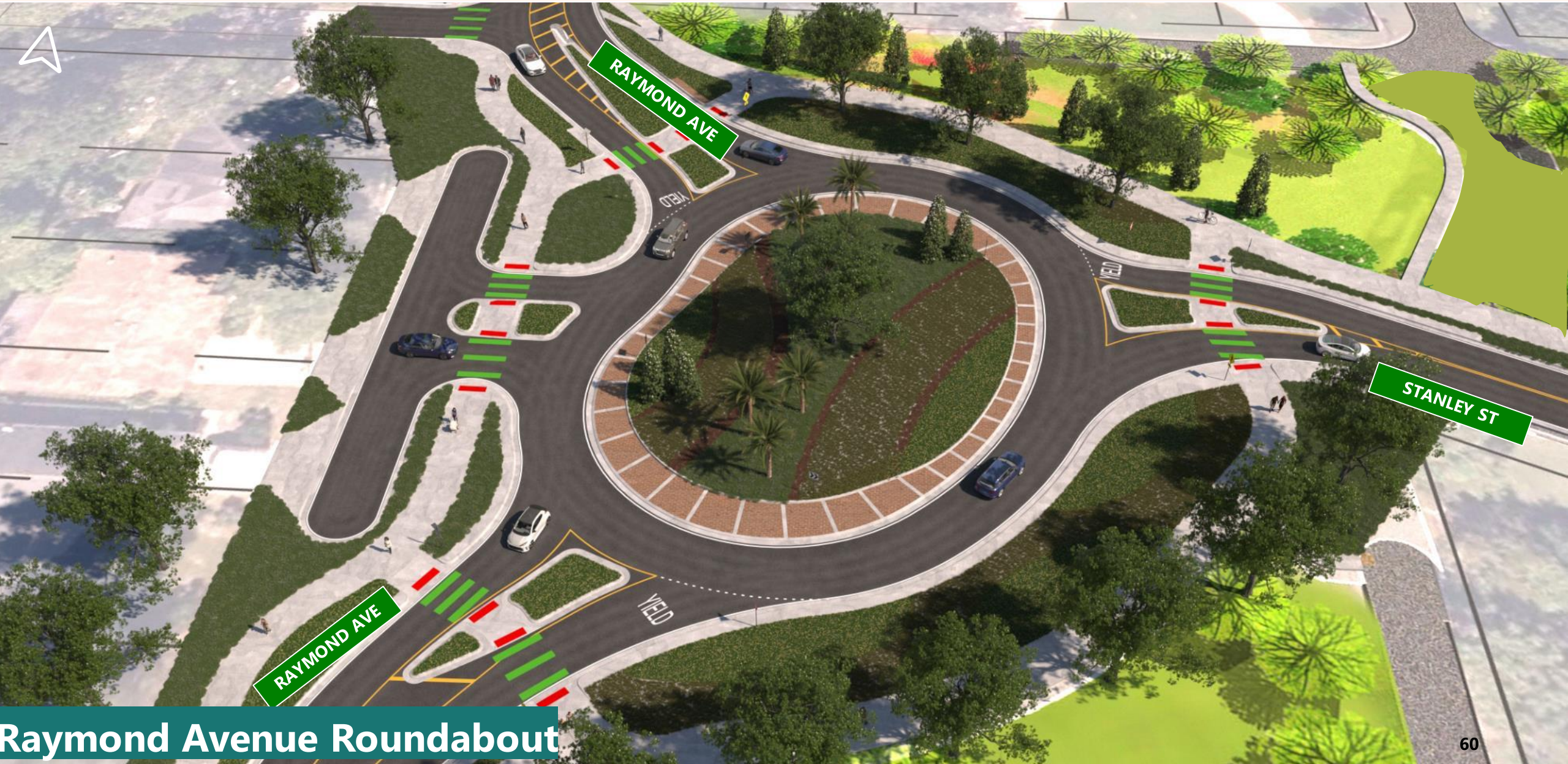
2

AFTER



Raymond Avenue Roundabout

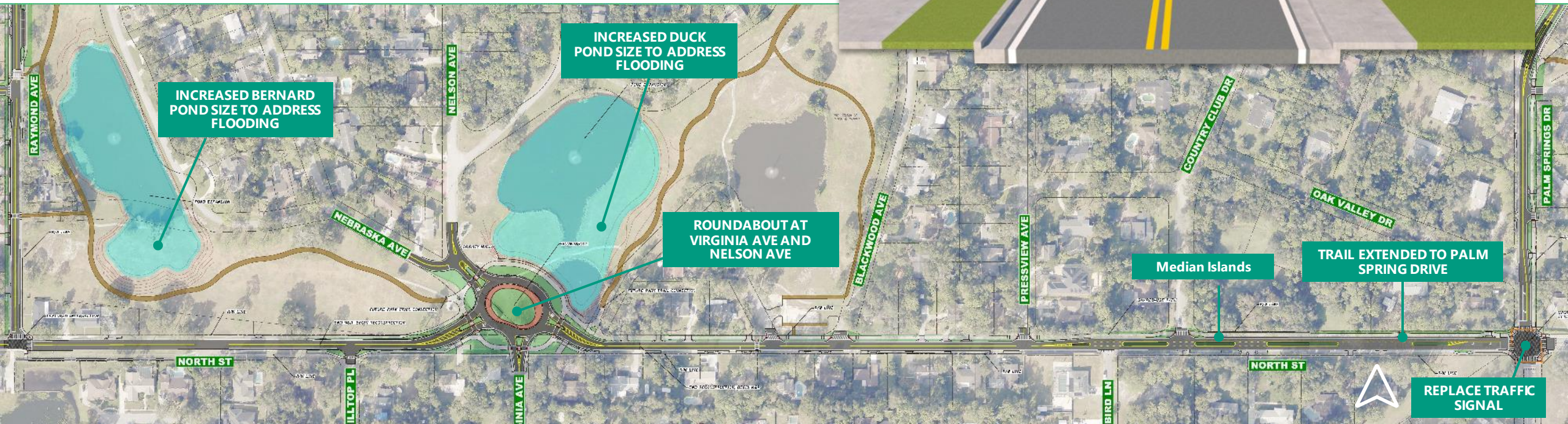
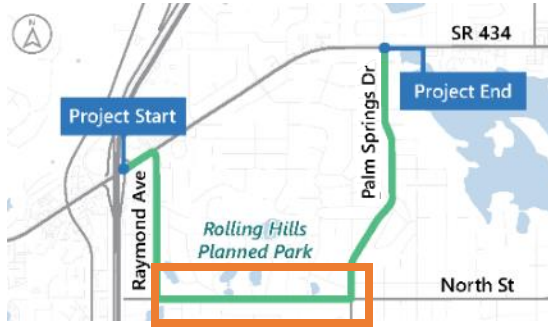
Rolling Hills Area Roadway Improvements Phase 1



Raymond Avenue Roundabout

Rolling Hills Area Roadway Improvements Phase 1

NORTH STREET



Rolling Hills Area Roadway Improvements Phase 1



North Street Roundabout



Rolling Hills Area Roadway Improvements Phase 1



1 BEFORE



North Street Roundabout

Rolling Hills Area Roadway Improvements Phase 1



1

AFTER

North Street Roundabout

Rolling Hills Area Roadway Improvements Phase 1



2 BEFORE



North Street Roundabout

Rolling Hills Area Roadway Improvements Phase 1



2 AFTER



North Street Roundabout

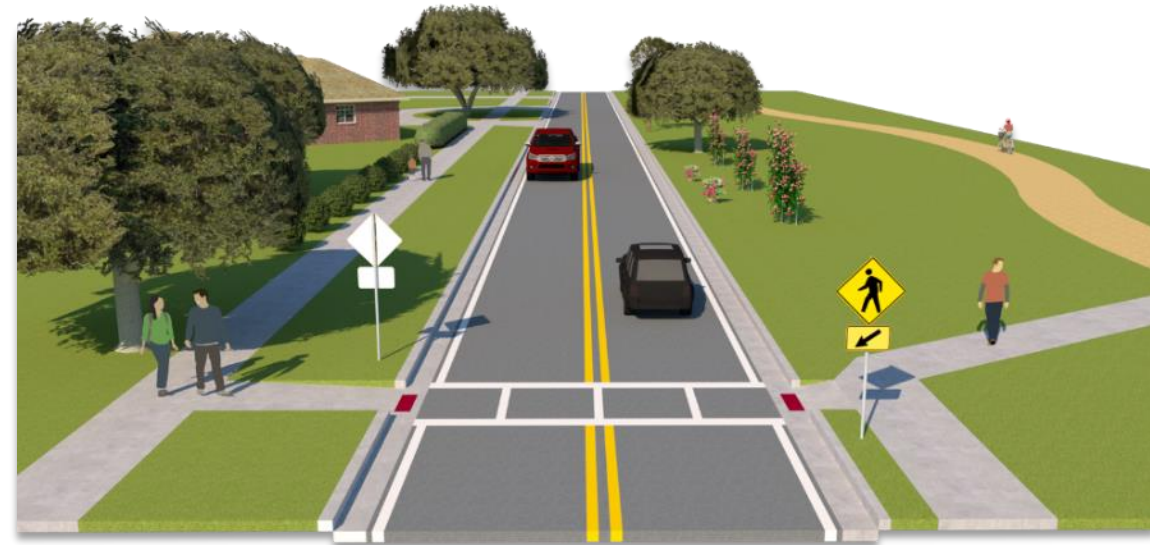
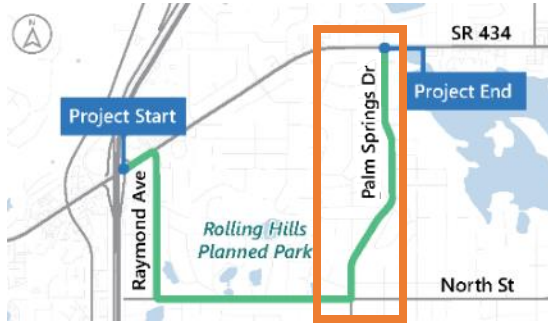
Rolling Hills Area Roadway Improvements Phase 1



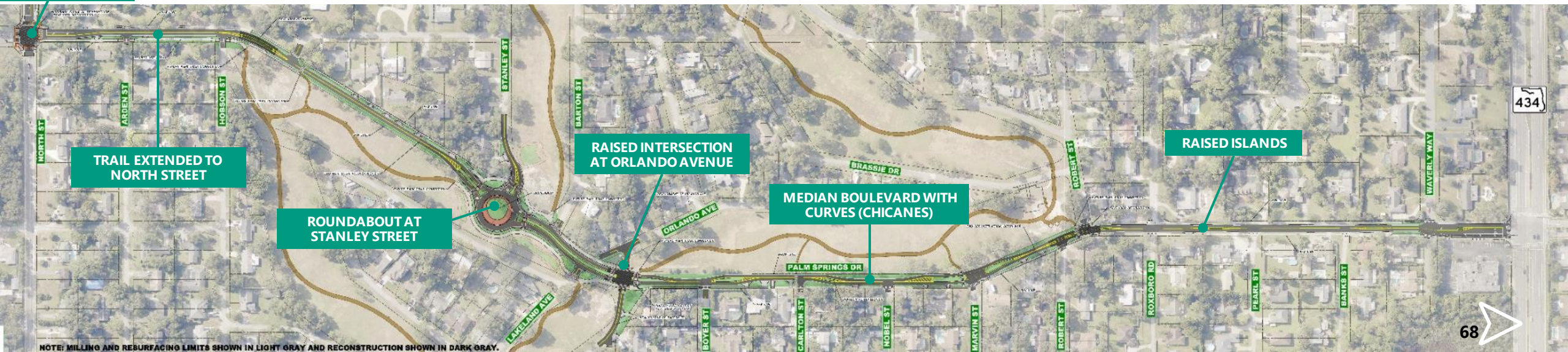
North Street Roundabout

Rolling Hills Area Roadway Improvements Phase 1

PALMS SPRINGS DRIVE



REPLACE TRAFFIC SIGNAL



Rolling Hills Area Roadway Improvements Phase 1



Palm Springs Drive Roundabout

PALM SPRINGS DR

Rolling Hills Area Roadway Improvements Phase 1

Benefits of Chicanes



- Slows vehicle traffic by causing vehicles to follow a curve
- Enhances neighborhood appearance through a visual narrowing of the street

ROADWAY
DEFLECTION



ROADWAY
DEFLECTION



PUBLIC SPACE
AMENITIES



NARROWED
ASPHALT

Rolling Hills Area Roadway Improvements Phase 1



BOYER ST

ORLANDO AVE

NOBEL ST

CARLTON ST

BOYER ST

PALM SPRINGS DR

Palm Springs Drive Chicanes



TONIGHT'S AGENDA

1

Welcome & Introductions

2

Review of Process & Progress

3

Current Status

4

Next Steps & Timeline

5

For More Information...



4

Next Steps

- ▶ **Parkway Streets + Full 12' Park Multi-Use Trail; Phase 1 Park Amenities; Inclusive Playground Construction Drawing Packages in Final Completion and Permitting**
- ▶ **Streets + Trail Improvements to Begin later in 2024**
- ▶ **Groundbreaking Ceremony**
- ▶ **Continued Phased Improvements**



TONIGHT'S AGENDA

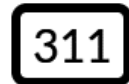
- 1 Welcome & Introductions
- 2 Review of Process & Progress
- 3 Current Status
- 4 Next Steps & Timeline
- 5 For More Information...**



SEMINOLE COUNTY

FLORIDA'S NATURAL CHOICE

CONNECT WITH US



311



Facebook



Twitter



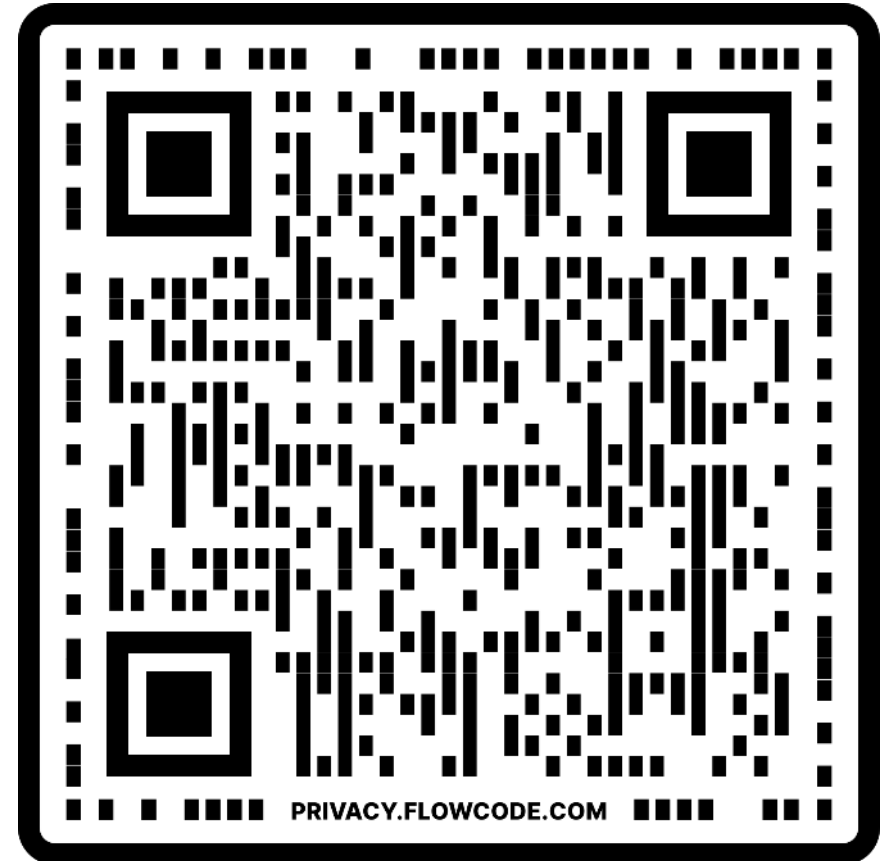
YouTube



Nextdoor



Instagram



For More Information:



Phone: (407) 665-2001

Email: projects@seminolecountyfl.gov

Web: www.seminolecountyfl.gov



www.parcfoundation.org

Thank You!



www.rollinghillsparkplan.com

