

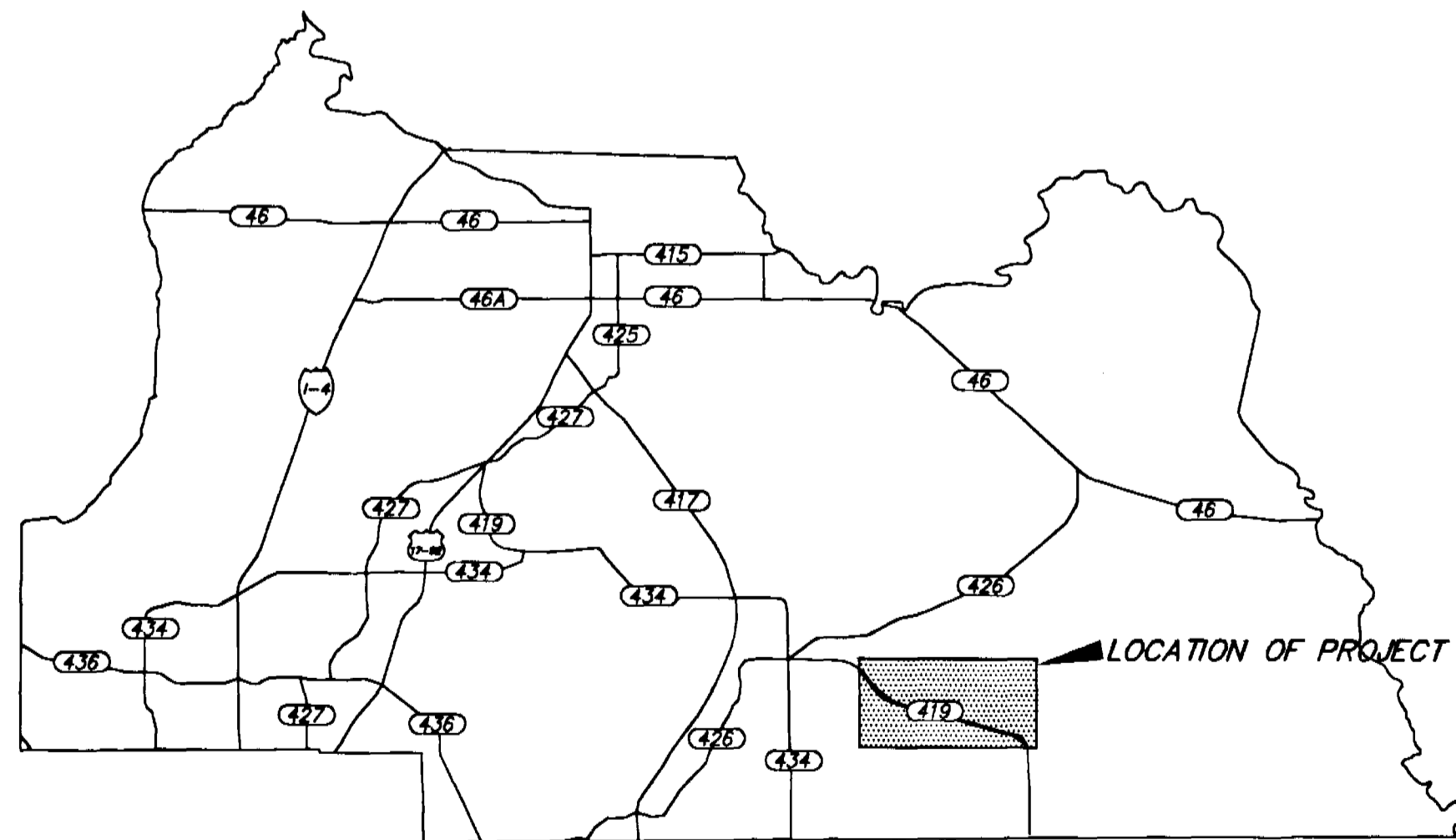
SEMINOLE COUNTY, FLORIDA

INDEX

SHEET NO.	SHEET DESCRIPTION
1	COVER SHEET
2-4	CONTROL SURVEY
5-13	RIGHT-OF-WAY MAP
14	BASELINE OF SURVEY POINT REFERENCES
15	TABLE OF OWNERSHIP

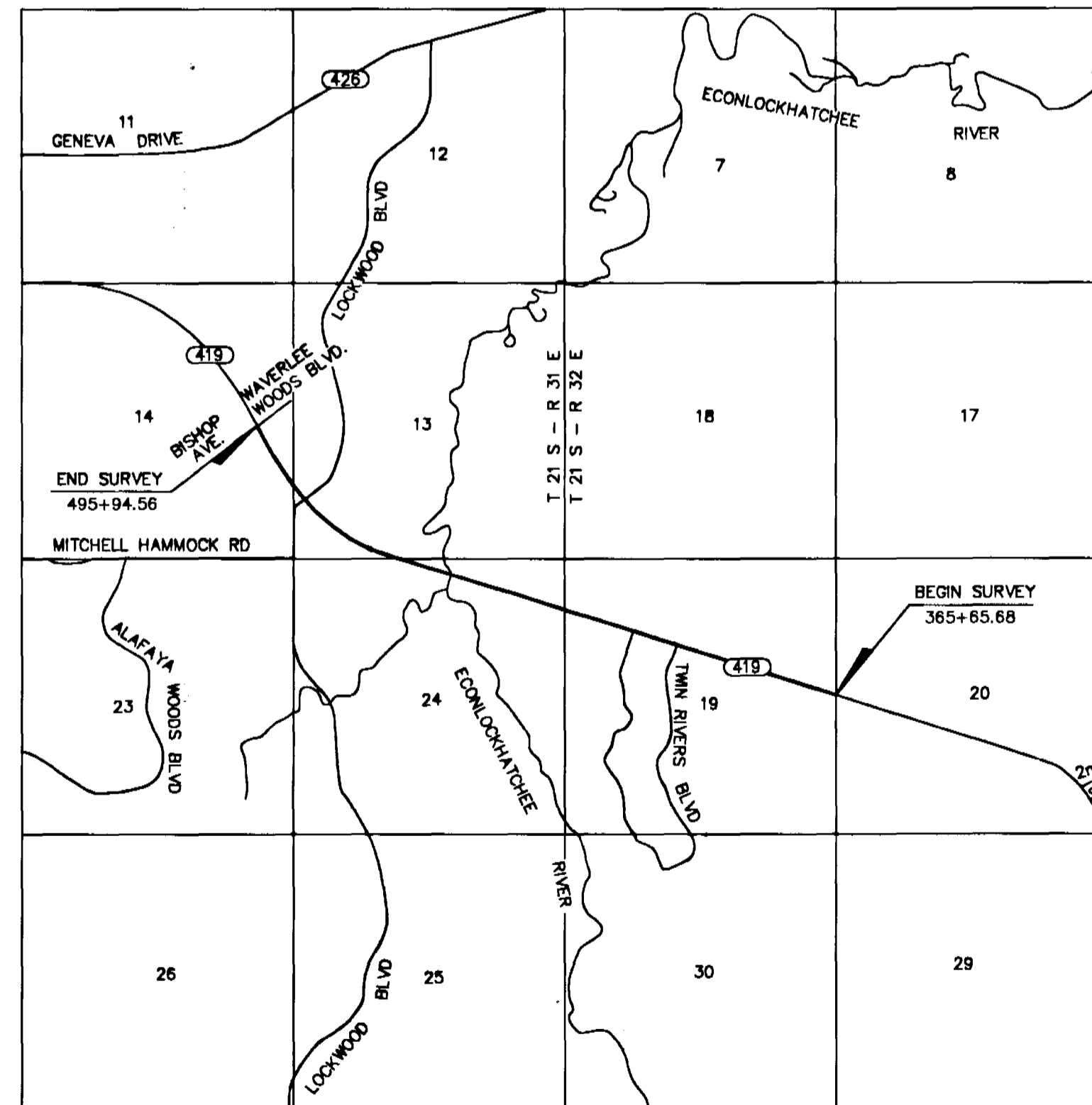
LEGEND:

- = SIGNAL MAST ARM
- = SIGNAL MAST ARM
- ☆ = LIGHT POLE
- = SIGN
- = POWER POLE
- = FOUND IRON PIPE
- ⊙ = SET IRON BAR & CAP LB 3556
- ⊕ = FOUND CONCRETE MONUMENT
- △ = CENTRAL ANGLE
- = TELEPHONE POLE
- = FENCE LINE
- AC = ADRES
- B = BASELINE
- B.W.F. = BARD WIRE FENCE
- C = CHORD
- (C) = CALCULATED DATA
- CB = CHORD BEARING
- E = CENTERLINE
- C.C.R. = CERTIFIED CORNER RECORD
- CM = CONCRETE MONUMENT
- C.R. = COUNTY ROAD
- (D) = DEED DATA
- DB = DEED BOOK
- DESC. = DESCRIPTION
- EXIST. = EXISTING
- (F) = FIELD DATA
- FDOT = FLORIDA DEPARTMENT OF TRANSPORTATION
- FND = FOUND
- IB = 1/2" x 18" IRON BAR
- IP = IRON PIPE
- IR&C = IRON ROD AND CAP
- L = LENGTH
- L.T. = LEFT
- M.B. = MAP BOOK
- OHT = OVER HEAD TELEPHONE
- O.R.B. = OFFICIAL RECORDS BOOK
- (P) = PLAT DATA
- P.B. = PLAT BOOK
- P.C. = POINT OF CURVATURE
- PG. = PAGE
- P.I. = POINT OF INTERSECTION
- P.L. = PROPERTY LINE
- PLS = PROFESSIONAL LAND SURVEYOR
- POB = POINT OF BEGINNING
- POC = POINT OF COMMENCEMENT
- P.O.C. = POINT ON A CURVE
- P.O.T. = POINT ON A TANGENT
- PT = POINT OF TANGENCY
- R = RADIUS
- RNG. = RANGE
- RT. = RIGHT
- R/W = RIGHT-OF-WAY LINE
- SEC = SECTION
- S.F. = SQUARE FEET
- STA. = STATION
- TWP. = TOWNSHIP
- T.C.E. = TEMPORARY CONSTRUCTION EASEMENT



COUNTY ROAD # 419 - PHASE I RIGHT-OF-WAY MAP & CONTROL SURVEY

FROM EAST LINE OF THE NE. 1/4 OF SECTION 19-21-32 TO WAVERLEE WOODS BOULEVARD.



LOCATION MAP

GENERAL NOTES:

- (1) PROJECT BEARINGS SHOWN HEREON ARE RELATIVE TO AN ASSUMED DATUM BASED ON THE CENTERLINE OF COUNTY ROAD NO. 419 (BETWEEN STA. 17+00 AND STA. 50+00), AS PER SEMINOLE COUNTY RIGHT-OF-WAY MAP COUNTY PROJECT NO. PS-080, PREPARED BY JONES, WOOD AND GENTRY, INC. DATED JANUARY 18, 1991, BEING NORTH 73°04'30" WEST.
- (2) PROPERTY BOUNDARIES WERE DETERMINED FROM FIELD SURVEY, PLATS OF RECORD AND RECORD TITLE.
- (3) ATTENTION IS DIRECTED TO THE FACT THAT THIS MAP MAY HAVE BEEN REDUCED IN SIZE BY REPRODUCTION. THIS MUST BE CONSIDERED WHEN OBTAINING SCALED DATA.
- (4) UNLESS OTHERWISE SHOWN, ALL DIMENSIONS AS SHOWN HAVE BEEN CALCULATED FROM A CLOSED FIELD TRAVERSE OR DIRECT FIELD MEASUREMENT (F).
- (5) RIGHT-OF-WAY MONUMENTS ARE TO BE SET AFTER CONSTRUCTION OF THE PROJECT IS COMPLETE UNDER SEPARATE CONTRACT.

RIGHT-OF-WAY SURVEY CERTIFICATION:

I HEREBY CERTIFY THIS RIGHT-OF-WAY SURVEY, CONSISTING OF SHEETS 1 THROUGH 15, FOR THE SPECIFIC PURPOSE OF SURVEYING, REFERENCING, DESCRIBING AND MAPPING THE RIGHT-OF-WAY CORRIDOR AND ADJOINING PROPERTY FOR THE TRANSPORTATION FACILITY SHOWN AND DEPICTED HEREON AND THAT SAID SURVEY WAS DONE UNDER MY RESPONSIBLE CHARGE AND MEETS THE MINIMUM TECHNICAL STANDARDS FOR LAND SURVEYORS AND MAPPERS AS SET FORTH IN CHAPTER 61G17-6, FLORIDA ADMINISTRATIVE CODE, FLORIDA STATUTES.

DAVID A. WHITE, P.S.M.
FLORIDA REGISTRATION NO. 4044
PROFESSIONAL ENGINEERING CONSULTANTS, INC.
CERTIFICATE OF AUTHORIZATION NO. LB-3556

David A. White

COVER SHEET

COUNTY OF SEMINOLE
ENGINEERING DEPARTMENT
RIGHT OF WAY ENGINEERING SECTION

APPROVED BY
DATE

REVISION	BY	DATE	REVISION	BY	DATE

SUBMITTAL	DESIGNED BY	DRAWN BY	CHECKED BY	DATE
PRELIM - JOHN	P.S.	A.M.L.	D.A.W.	3-20-88
PRELIM - BOB	P.S.	A.M.L./T.W.B.	D.A.W.	8-31-88
FINAL - BOB	P.S.	J.L.M.	D.A.W.	3-28-89
CHECK - TOOLE	P.S.	J.L.M.	D.A.W.	8-22-00
FINAL - BOB				

PROJECT NO. RP-049

COUNTY ROAD NO. 419 - PHASE I
CITY OF OVIEDO, SEMINOLE COUNTY, FLORIDA

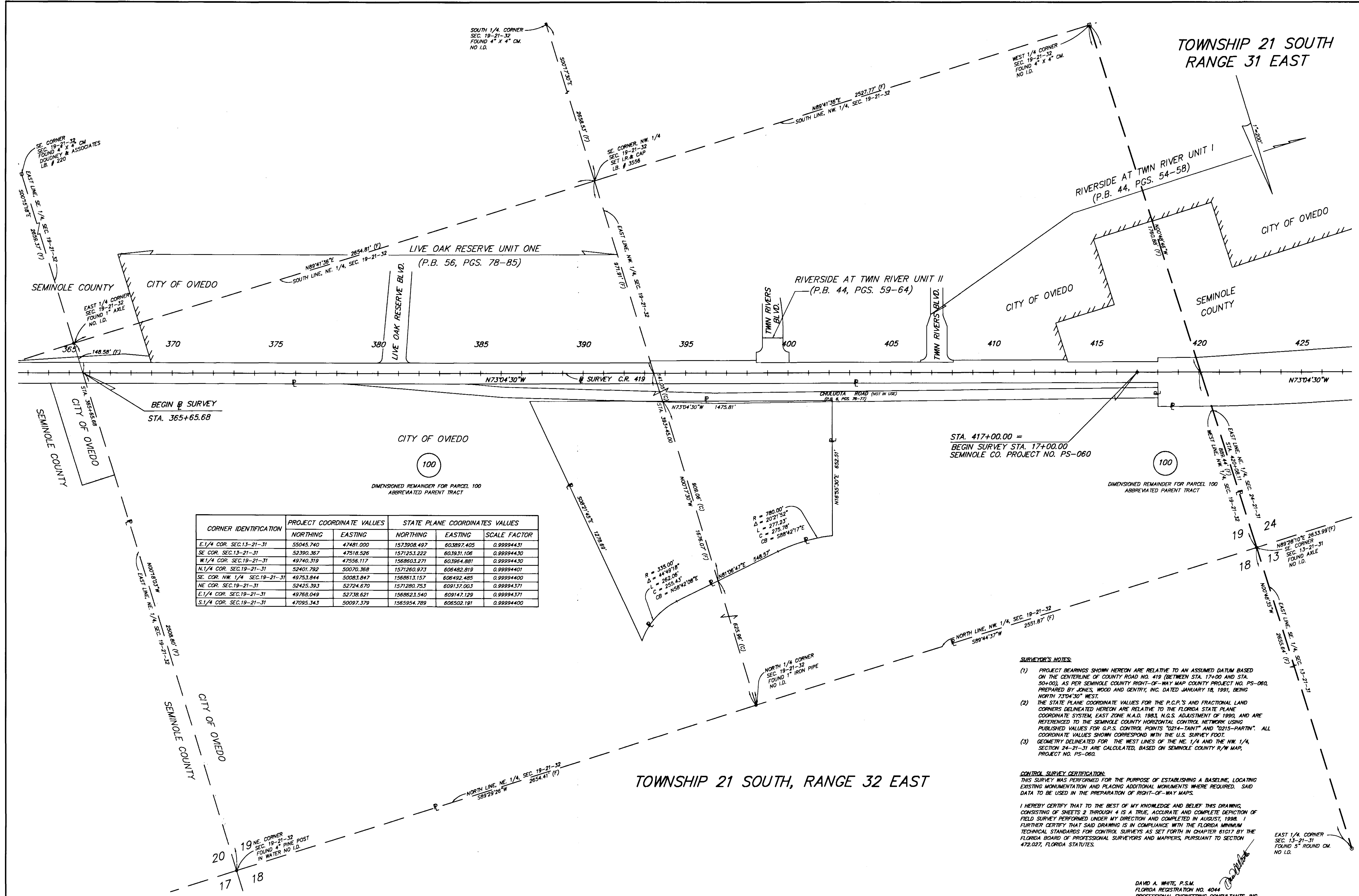
MAPS PREPARED BY
PEC PROFESSIONAL ENGINEERING CONSULTANTS, INC.
300 EAST ROBINSON STREET, ORLANDO, FLORIDA 32801

FIELD BOOK NO.'S
814, 815, 816 & 887

SCALE: N/A

SHEET 1 OF 15

TOWNSHIP 21 SOUTH
RANGE 31 EAST



CORNER IDENTIFICATION	PROJECT COORDINATE VALUES		STATE PLANE COORDINATES VALUES		
	NORTHING	EASTING	NORTHING	EASTING	SCALE FACTOR
E. 1/4 COR. SEC. 13-21-31	53045.740	47481.000	1573908.497	603897.405	0.99994431
SE COR. SEC. 13-21-31	52390.367	47518.526	1571253.222	603931.106	0.99994430
W. 1/4 COR. SEC. 19-21-31	49740.319	47556.117	1568603.271	603964.881	0.99994430
N. 1/4 COR. SEC. 19-21-31	52401.792	50070.368	1571260.973	606482.819	0.99994401
SE. COR. NW. 1/4 SEC. 19-21-31	49753.844	50083.844	1568613.157	606492.485	0.99994400
NE COR. SEC. 19-21-31	52425.393	52724.670	1571280.753	609137.003	0.99994371
E. 1/4 COR. SEC. 19-21-31	49768.049	52738.621	1568623.540	609147.129	0.99994371
S. 1/4 COR. SEC. 19-21-31	47095.343	50097.379	1565954.789	606502.191	0.99994400

SURVEYOR'S NOTES:

- PROJECT BEARINGS SHOWN HEREON ARE RELATIVE TO AN ASSUMED DATUM BASED ON THE CENTERLINE OF COUNTY ROAD NO. 419 (BETWEEN STA. 17+00 AND STA. 30+00), AS PER SEMINOLE COUNTY RIGHT-OF-WAY MAP COUNTY PROJECT NO. PS-060, PREPARED BY JONES WOOD AND GENTRY, INC. DATED JANUARY 18, 1991, BEING NORTH 23°04'30" WEST.
- THE STATE PLANE COORDINATE VALUES FOR THE P.C.F.'S AND FRACTIONAL LAND CORNERS DELINEATED HEREON ARE RELATIVE TO THE FLORIDA STATE PLANE COORDINATE SYSTEM, EAST ZONE N.A.D. 1983, N.G.S. ADJUSTMENT OF 1990, AND ARE REFERENCED TO THE SEMINOLE COUNTY HORIZONTAL CONTROL NETWORK USING PUBLISHED VALUES FOR G.P.S. CONTROL POINTS "0214-TAIN" AND "0215-PARTN". ALL COORDINATE VALUES SHOWN CORRESPOND WITH THE U.S. SURVEY FOOT.
- GEOMETRY DELINEATED FOR THE WEST LINES OF THE NE 1/4 AND THE NW 1/4, SECTION 24-21-31 ARE CALCULATED, BASED ON SEMINOLE COUNTY R/W MAP, PROJECT NO. PS-060.

CONTROL SURVEY CERTIFICATION:
THIS SURVEY WAS PERFORMED FOR THE PURPOSE OF ESTABLISHING A BASELINE, LOCATING EXISTING MONUMENTATION AND PLACING ADDITIONAL MONUMENTS WHERE REQUIRED. SAID DATA TO BE USED IN THE PREPARATION OF RIGHT-OF-WAY MAPS.

I HEREBY CERTIFY THAT TO THE BEST OF MY KNOWLEDGE AND BELIEF THIS DRAWING, CONSISTING OF SHEETS 2 THROUGH 4 IS A TRUE, ACCURATE AND COMPLETE DEPICTION OF FIELD SURVEY PERFORMED UNDER MY DIRECTION AND COMPLETED IN AUGUST, 1998. I FURTHER CERTIFY THAT SAID DRAWING IS IN COMPLIANCE WITH THE FLORIDA MINIMUM TECHNICAL STANDARDS FOR CONTROL SURVEYS AS SET FORTH IN CHAPTER 81G17 BY THE FLORIDA BOARD OF PROFESSIONAL SURVEYORS AND MAPPERS, PURSUANT TO SECTION 472.027, FLORIDA STATUTES.

DAVID A. WHITE, P.S.M.
FLORIDA REGISTRATION NO. 4044
PROFESSIONAL ENGINEERING CONSULTANTS, INC.
CERTIFICATE OF AUTHORIZATION NO. LB-3556

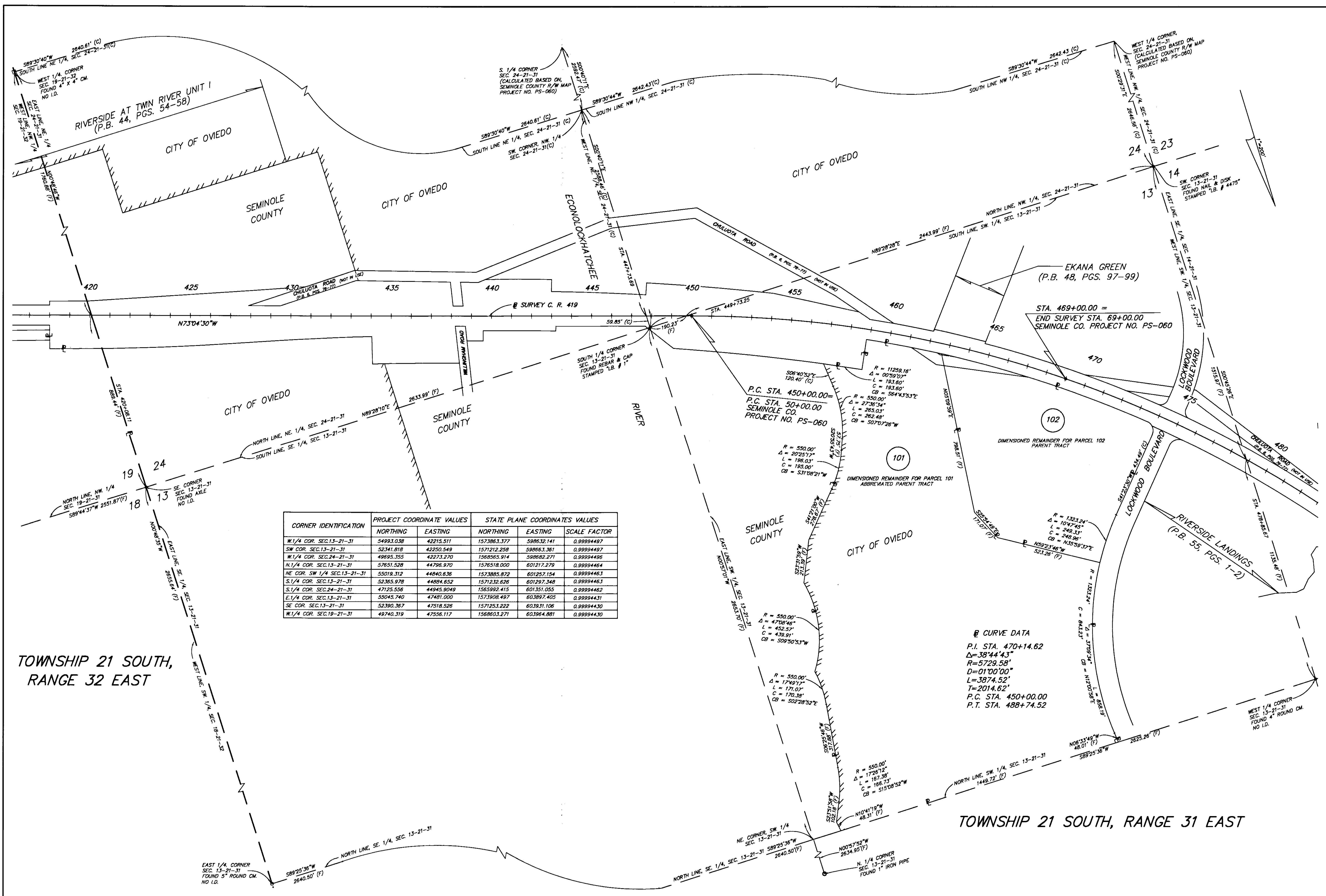
CONTROL SURVEY

COUNTY OF SEMINOLE
ENGINEERING DEPARTMENT
RIGHT OF WAY ENGINEERING SECTION

APPROVED BY	DATE	REVISION	BY	DATE	REVISION	BY	DATE

PROJECT NO. RP-049
COUNTY ROAD NO. 419 - PHASE I
CITY OF OVIEDO, SEMINOLE COUNTY, FLORIDA

MAPS PREPARED BY
PEC PROFESSIONAL ENGINEERING CONSULTANTS, INC.
200 EAST ROBINSON STREET, ORLANDO, FLORIDA 32801
FIELD BOOK NO.'S
814, 815, 816 & 887
SCALE: 1" = 200'
SHEET 2 OF 15



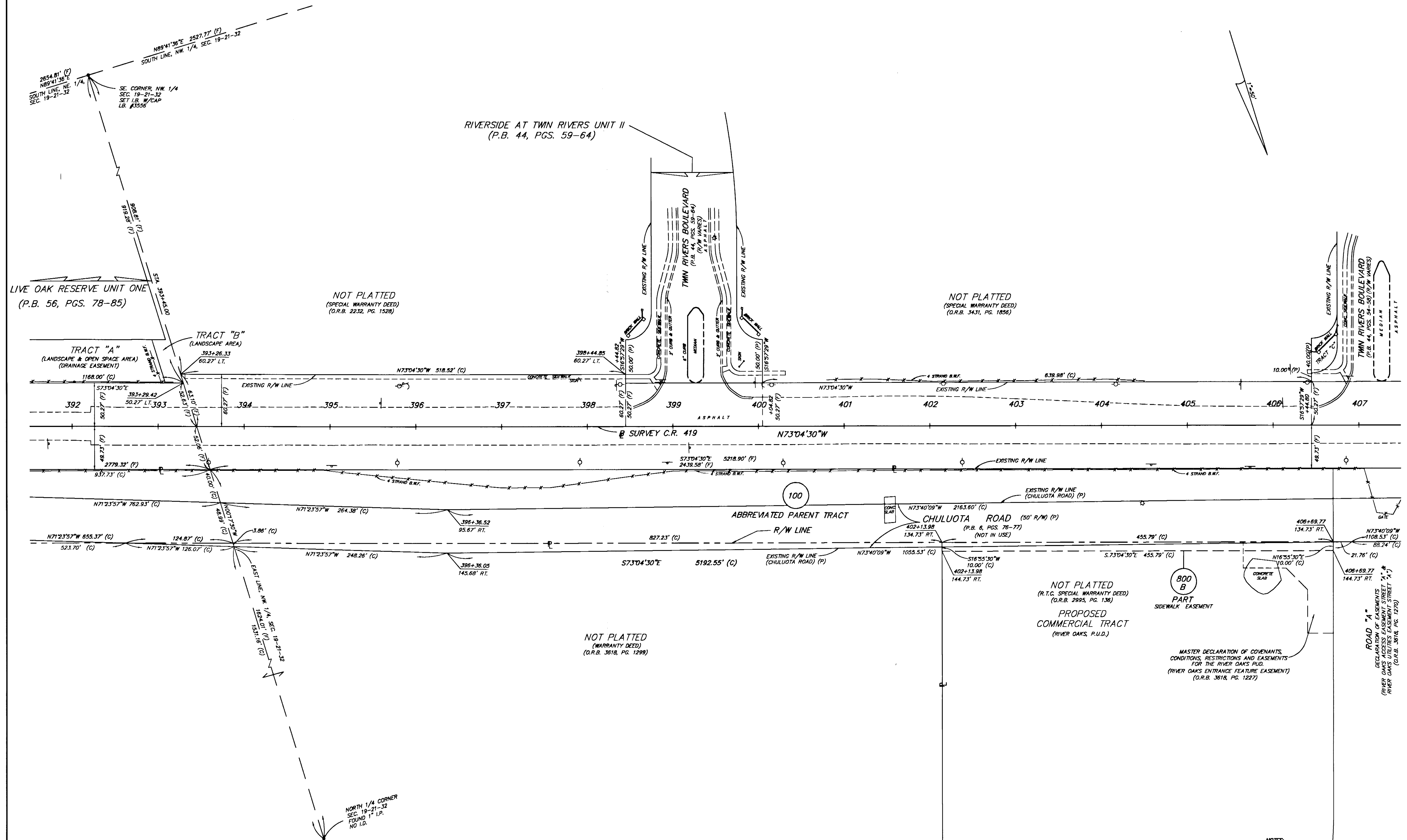
CORNER IDENTIFICATION	PROJECT COORDINATE VALUES		STATE PLANE COORDINATE VALUES		
	NORTHING	EASTING	NORTHING	EASTING	SCALE FACTOR
W 1/4 COR. SEC. 13-21-31	54993.038	42215.511	1573863.377	598632.141	0.99994497
SW COR. SEC. 13-21-31	52341.818	42250.549	1571212.258	598663.361	0.99994497
W 1/4 COR. SEC. 24-21-31	49695.355	42273.270	1568565.914	598682.271	0.99994496
N 1/4 COR. SEC. 13-21-31	57651.528	44796.970	1576518.000	601217.279	0.99994464
NE COR. SW 1/4 SEC. 13-21-31	55019.312	44840.636	1573885.872	601257.154	0.99994463
S 1/4 COR. SEC. 13-21-31	52365.978	44804.652	1571232.626	601297.348	0.99994463
S 1/4 COR. SEC. 24-21-31	47125.556	44945.9049	1565992.415	601351.055	0.99994462
E 1/4 COR. SEC. 13-21-31	55045.740	47481.000	1573908.497	603897.405	0.99994431
SE COR. SEC. 13-21-31	52390.367	47518.526	1571253.222	603931.106	0.99994430
W 1/4 COR. SEC. 19-21-31	49740.319	47556.117	1568603.271	603964.881	0.99994430

TOWNSHIP 21 SOUTH,
RANGE 32 EAST

TOWNSHIP 21 SOUTH, RANGE 31 EAST

CONTROL SURVEY	COUNTY OF SEMINOLE ENGINEERING DEPARTMENT RIGHT OF WAY ENGINEERING SECTION	APPROVED BY _____	DESIGNED BY _____	DRAWN BY _____	CHECKED BY _____	DATE _____	PROJECT NO. RP-049 COUNTY ROAD NO. 419 - PHASE I CITY OF OVIEDO, SEMINOLE COUNTY, FLORIDA	MAPS PREPARED BY PEC PROFESSIONAL ENGINEERING CONSULTANTS, INC. 200 EAST ROBINSON STREET, ORLANDO, FLORIDA 32801	FIELD BOOK NO. S 814, 815, 816 & 887 SCALE: 1"=200' SHEET 3 OF 15
	DATE _____	REVISION _____	BY _____	DATE _____	REVISION _____	BY _____			

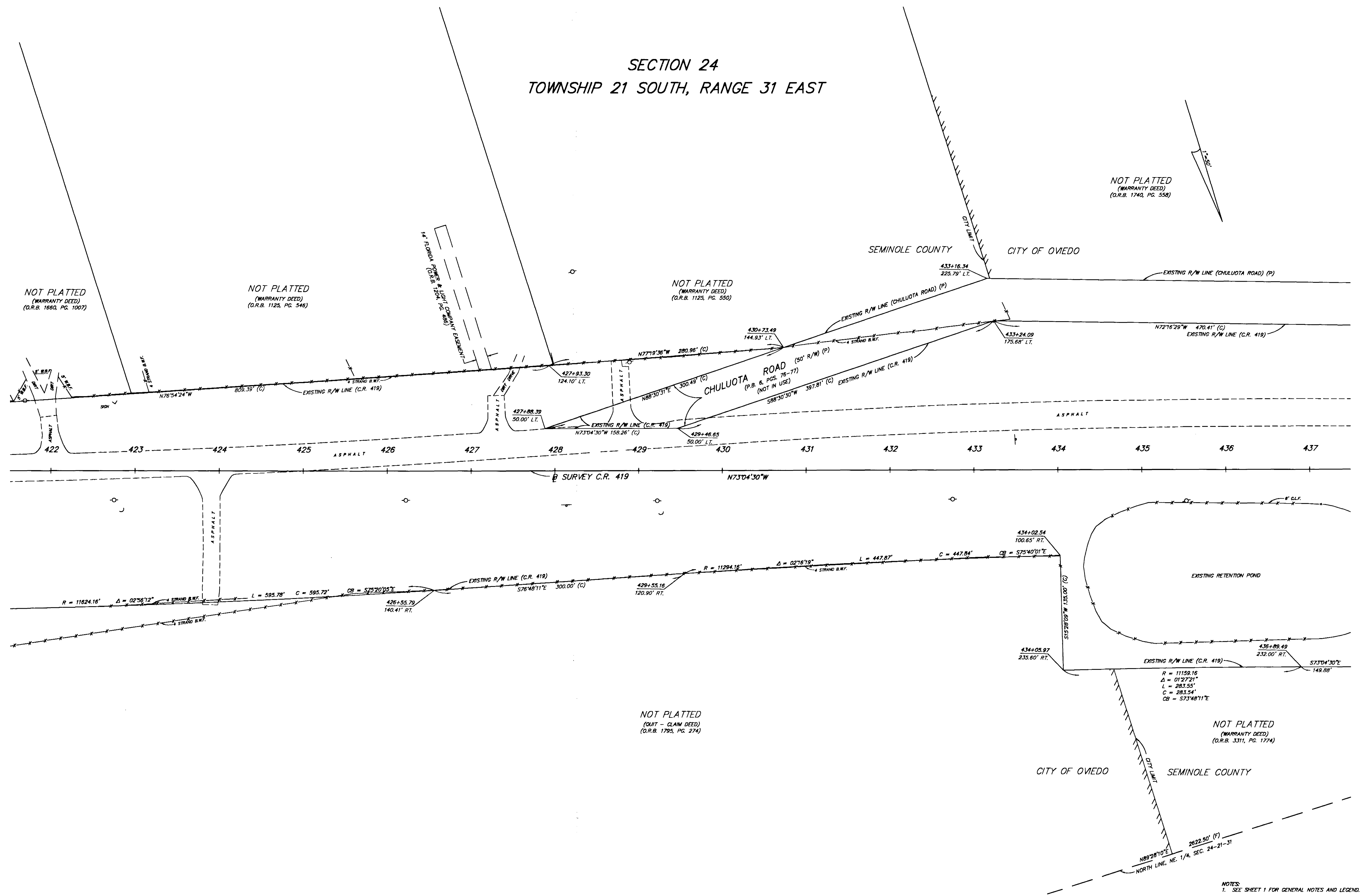
SECTION 19
TOWNSHIP 21 SOUTH, RANGE 32 EAST



NOTES:
1. SEE SHEET 1 FOR GENERAL NOTES AND LEGEND.

RIGHT OF WAY MAP	COUNTY OF SEMINOLE ENGINEERING DEPARTMENT RIGHT OF WAY ENGINEERING SECTION	APPROVED BY	DESIGNED BY	DRAWN BY	CHECKED BY	DATE	PROJECT NO. RP-049	MAPS PREPARED BY PEC PROFESSIONAL ENGINEERING CONSULTANTS, INC. 200 EAST ROBINSON STREET, ORLANDO, FLORIDA 32801	FIELD BOOK NO. 5 814, 815, 816 & 887 SCALE: 1" = 50' SHEET 7 OF 15
		DATE	REVISION	BY	DATE	REVISION			

SECTION 24
TOWNSHIP 21 SOUTH, RANGE 31 EAST



NOT PLATTED
(WARRANTY DEED)
(O.R.B. 1740, PG. 558)

NOT PLATTED
(WARRANTY DEED)
(O.R.B. 1860, PG. 1007)

NOT PLATTED
(WARRANTY DEED)
(O.R.B. 1125, PG. 546)

NOT PLATTED
(WARRANTY DEED)
(O.R.B. 1125, PG. 550)

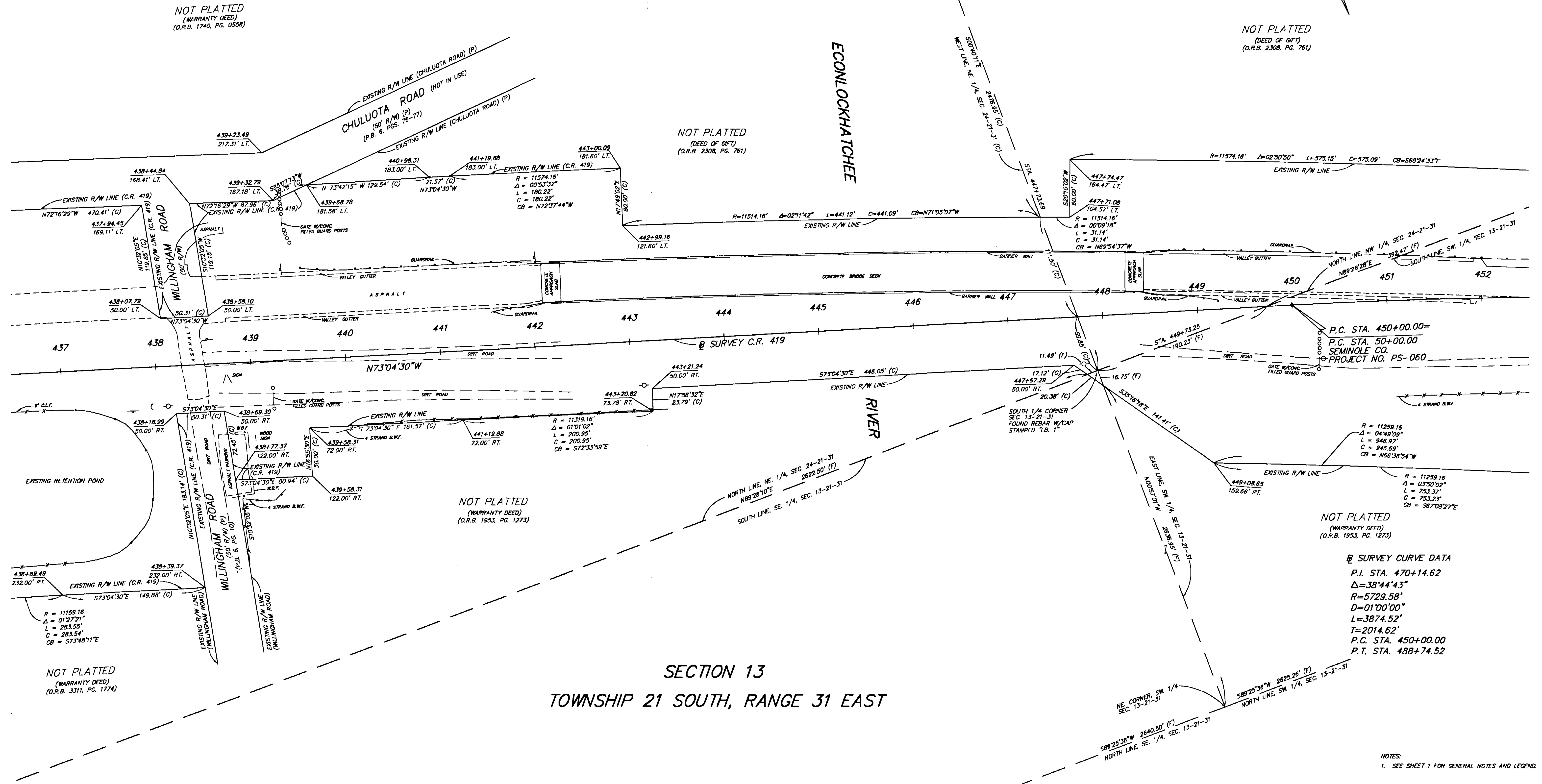
NOT PLATTED
(QUIT - CLAIM DEED)
(O.R.B. 1785, PG. 274)

NOTES:
1. SEE SHEET 1 FOR GENERAL NOTES AND LEGEND.

RIGHT OF WAY MAP	COUNTY OF SEMINOLE ENGINEERING DEPARTMENT RIGHT OF WAY ENGINEERING SECTION	APPROVED BY		DESIGNED BY		DRAWN BY		CHECKED BY		DATE		PROJECT NO. RP-049	MAPS PREPARED BY	FIELD BOOK NO.'S
	DATE		REVISION		BY		DATE	REVISION		DATE		CITY OF OVIEDO, SEMINOLE COUNTY, FLORIDA	PEC PROFESSIONAL ENGINEERING CONSULTANTS, INC. 300 EAST ROBINSON STREET, ORLANDO, FLORIDA 32801	814, 815, 816 & 887
												SCALE: 1" = 50'	SHEET 9 OF 15	

SECTION 24
TOWNSHIP 21 SOUTH, RANGE 31 EAST

SECTION 13
TOWNSHIP 21 SOUTH, RANGE 31 EAST



NOT PLATTED
(WARRANTY DEED)
(O.R.B. 1740, PG. 0558)

NOT PLATTED
(DEED OF GIFT)
(O.R.B. 2308, PG. 761)

NOT PLATTED
(DEED OF GIFT)
(O.R.B. 2308, PG. 761)

NOT PLATTED
(WARRANTY DEED)
(O.R.B. 1953, PG. 1273)

NOT PLATTED
(WARRANTY DEED)
(O.R.B. 1953, PG. 1273)

NOT PLATTED
(WARRANTY DEED)
(O.R.B. 3311, PG. 1774)

@ SURVEY CURVE DATA
P.I. STA. 470+14.62
 $\Delta = 38^{\circ}44'43''$
 $R = 5729.58'$
 $D = 01'00'00''$
 $L = 3874.52'$
 $T = 2014.62'$
P.C. STA. 450+00.00
P.T. STA. 488+74.52

NOTES:
1. SEE SHEET 1 FOR GENERAL NOTES AND LEGEND.

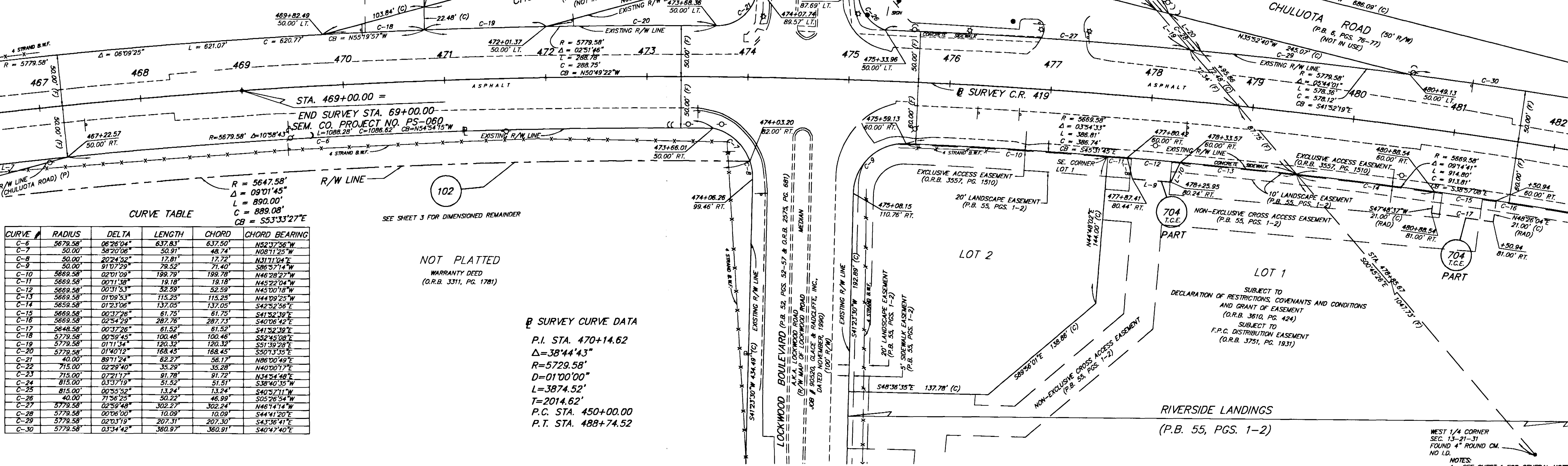
RIGHT OF WAY MAP	COUNTY OF SEMINOLE ENGINEERING DEPARTMENT RIGHT OF WAY ENGINEERING SECTION	APPROVED BY		DESIGNED BY		DRAWN BY		CHECKED BY		DATE		PROJECT NO. RP-049	MAPS PREPARED BY	FIELD BOOK NO.'S
		DATE		REVISION		REVISION		REVISION		REVISION		CITY OF OVIEDO, SEMINOLE COUNTY, FLORIDA	PEC PROFESSIONAL ENGINEERING CONSULTANTS, INC. 200 EAST ROBINSON STREET, ORLANDO, FLORIDA 32801	814, 815, 816 & 887
												SHEET 10 OF 15		

SECTION 14
TOWNSHIP 21 SOUTH, RANGE 31 EAST

SECTION 13
TOWNSHIP 21 SOUTH, RANGE 31 EAST

LINE TABLE

LINE #	BEARING	DISTANCE
L-7	S65°14'44"E	222.03'
L-8	S26°07'16"W	21.58'
L-9	S45°19'19"E	38.00'
L-10	N85°37'43"E	21.59'
L-11	N41°25'07"E	16.66'
L-12	N41°25'07"E	17.37'
L-13	N41°25'07"E	36.05'
L-14	N65°14'44"W	10.28'
L-15	S65°14'44"E	9.58'
L-16	N35°52'40"W	24.75'
L-17	N89°30'33"E	2.24'
L-18	S35°52'40"E	16.17'
L-19	S00°45'26"E	51.17'
L-20	S00°45'26"E	48.49'



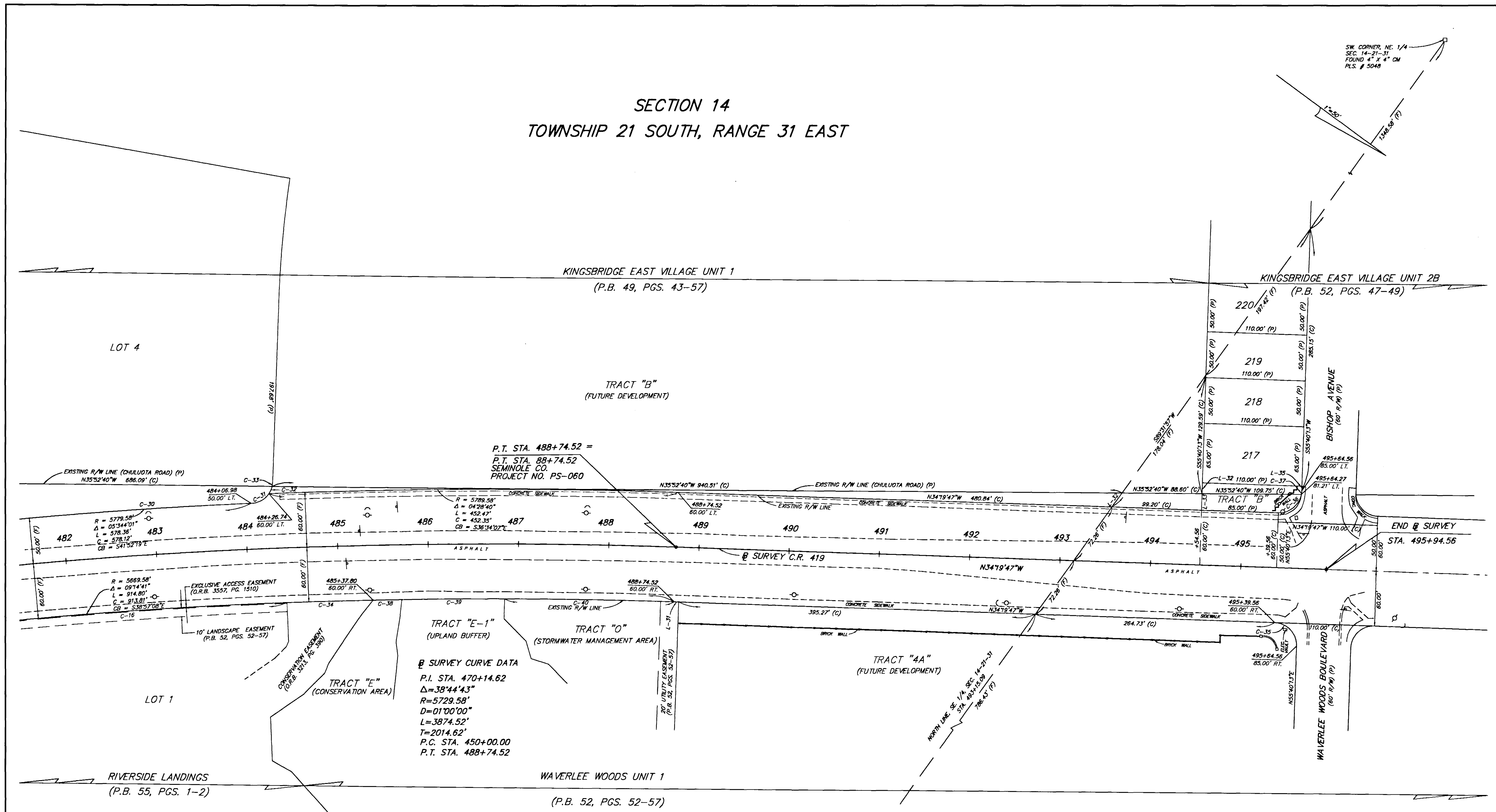
CURVE TABLE

CURVE #	RADIUS	DELTA	LENGTH	CHORD	CHORD BEARING
C-6	5679.58'	06°26'04"	637.83'	637.50'	N52°37'56"W
C-7	50.00'	56°20'06"	50.91'	48.74'	N08°11'25"W
C-8	50.00'	02°24'56"	17.81'	17.72'	N31°11'04"E
C-9	50.00'	91°07'29"	79.52'	71.40'	S86°57'14"W
C-10	5669.58'	02°01'09"	198.78'	198.78'	N46°28'27"W
C-11	5669.58'	00°11'38"	19.18'	19.18'	N45°22'04"W
C-12	5669.58'	00°37'53"	52.59'	52.59'	N45°00'18"W
C-13	5669.58'	01°09'53"	115.25'	115.25'	N44°09'25"W
C-14	5669.58'	01°23'06"	137.05'	137.05'	S42°52'56"E
C-15	5669.58'	00°37'26"	61.75'	61.75'	S41°52'39"E
C-16	5669.58'	02°54'29"	287.76'	287.73'	S40°06'42"E
C-17	5648.58'	00°37'26"	61.52'	61.52'	S41°52'39"E
C-18	5779.58'	00°59'45"	100.46'	100.46'	S52°45'08"E
C-19	5779.58'	01°11'34"	120.32'	120.32'	S51°29'29"E
C-20	5779.58'	01°40'12"	168.45'	168.45'	S50°13'35"E
C-21	40.00'	89°11'24"	62.27'	56.17'	N86°00'49"E
C-22	715.00'	02°29'40"	35.29'	35.28'	N40°00'17"E
C-23	715.00'	07°11'27"	91.78'	91.72'	N44°34'48"E
C-24	815.00'	03°37'19"	51.52'	51.51'	S38°40'35"W
C-25	815.00'	00°55'52"	13.24'	13.24'	S40°52'11"W
C-26	40.00'	71°56'25"	50.22'	46.99'	S05°26'54"W
C-27	5779.58'	02°59'48"	302.27'	302.24'	N46°14'14"W
C-28	5779.58'	00°06'00"	10.09'	10.09'	S44°41'20"E
C-29	5779.58'	02°03'19"	207.31'	207.30'	S43°36'41"E
C-30	5779.58'	03°34'42"	380.97'	380.91'	S40°47'40"E

Survey Curve Data
 P.I. STA. 470+14.62
 $\Delta = 38°44'43"$
 $R = 5729.58'$
 $D = 01°00'00"$
 $L = 3874.52'$
 $T = 2014.62'$
 P.C. STA. 450+00.00
 P.T. STA. 488+74.52

RIGHT OF WAY MAP	COUNTY OF SEMINOLE ENGINEERING DEPARTMENT RIGHT OF WAY ENGINEERING SECTION	APPROVED BY		DESIGNED BY		DATE		PROJECT NO. RP-049 COUNTY ROAD NO. 419 - PHASE I CITY OF OVIEDO, SEMINOLE COUNTY, FLORIDA	MAPS PREPARED BY PEC PROFESSIONAL ENGINEERING CONSULTANTS, INC. 200 EAST ROBINSON STREET, GAITHERSBURG, MARYLAND 20878	FIELD BOOK NO. S 814, 815, 816 & 887 SCALE: 1"=50'
		DATE		DRAWN BY		CHECKED BY				
		REVISION	BY	DATE	REVISION	BY	DATE			SHEET 12 OF 15

SECTION 14
TOWNSHIP 21 SOUTH, RANGE 31 EAST



P.T. STA. 488+74.52 =
P.T. STA. 88+74.52
SEMINOLE CO.
PROJECT NO. PS-060

TRACTION CURVE DATA
P.I. STA. 470+14.62
 $\Delta = 38^{\circ}44'43''$
 $R = 5729.58'$
 $D = 01^{\circ}00'00''$
 $L = 3874.52'$
 $T = 2014.62'$
P.C. STA. 450+00.00
P.T. STA. 488+74.52

CURVE TABLE

CURVE #	RADIUS	DELTA	LENGTH	CHORD	CHORD BEARING
C-16	5669.58'	02°54'29"	287.76'	287.73'	S40°06'42"E
C-30	5779.58'	03°34'42"	360.97'	360.91'	S40°47'40"E
C-31	25.00'	23°14'02"	31.95'	29.82'	S75°17'20"E
C-32	25.00'	20°12'08"	8.81'	8.77'	S77°51'42"W
C-33	25.00'	12°07'10"	5.28'	5.28'	N51°42'04"E
C-34	5669.58'	00°57'38"	95.05'	95.05'	N38°10'38"W
C-35	25.00'	90°00'00"	39.27'	39.36'	S10°40'13"W
C-36	25.00'	81°17'16"	35.47'	32.57'	S74°58'25"E
C-37	25.00'	08°42'44"	3.80'	3.80'	N60°01'35"E
C-38	5669.58'	00°19'15"	31.75'	31.75'	N37°32'12"W
C-39	5669.58'	01°08'55"	113.88'	113.88'	N36°48'07"W
C-40	5669.58'	01°53'52"	187.79'	187.79'	N35°16'43"W

LINE TABLE

LINE #	BEARING	DISTANCE
L-31	N34°19'47"W	5.04'
L-32	N89°31'57"E	19.09'
L-33	N55°40'13"E	18.25'
L-34	S55°40'13"W	11.75'
L-35	N55°40'13"E	5.00'

WEST 1/4 CORNER
SEC. 13-21-31
FOUND 4" ROUND CM.
NO I.D.

NOTES:
1. SEE SHEET 1 FOR GENERAL NOTES AND LEGEND.

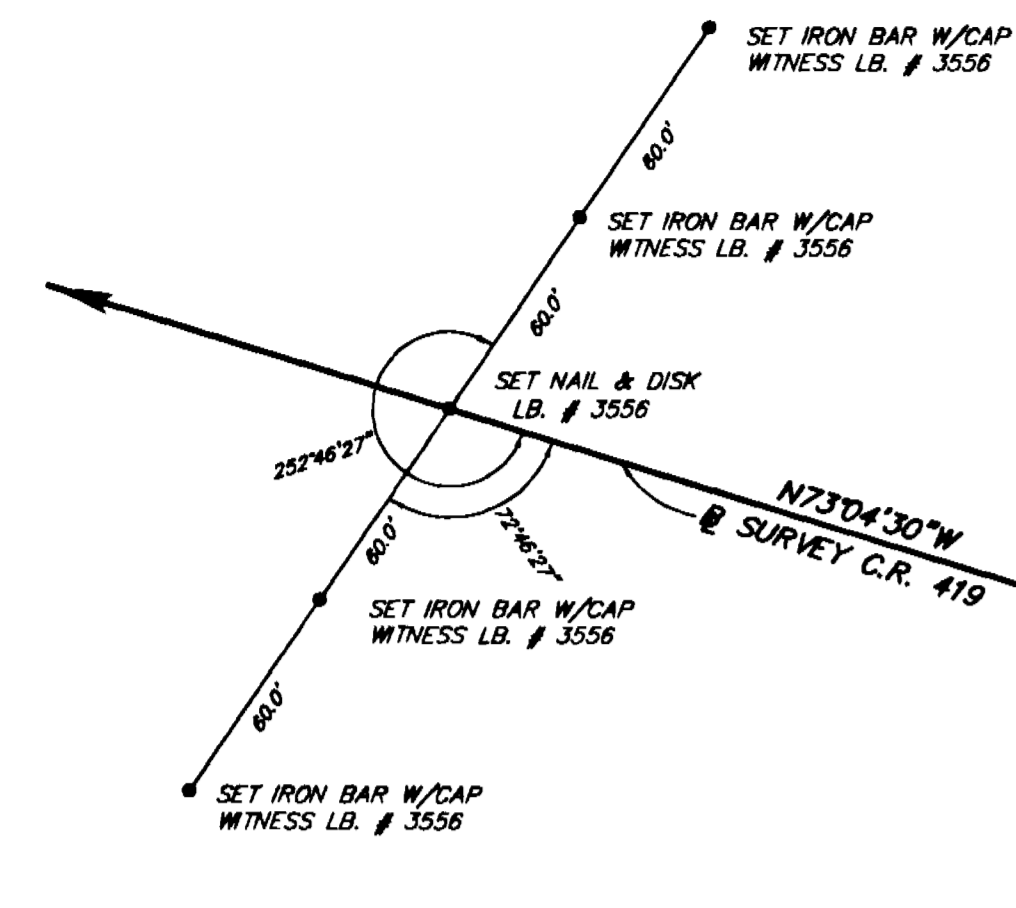
RIGHT OF WAY MAP

COUNTY OF SEMINOLE
ENGINEERING DEPARTMENT
RIGHT OF WAY ENGINEERING SECTION

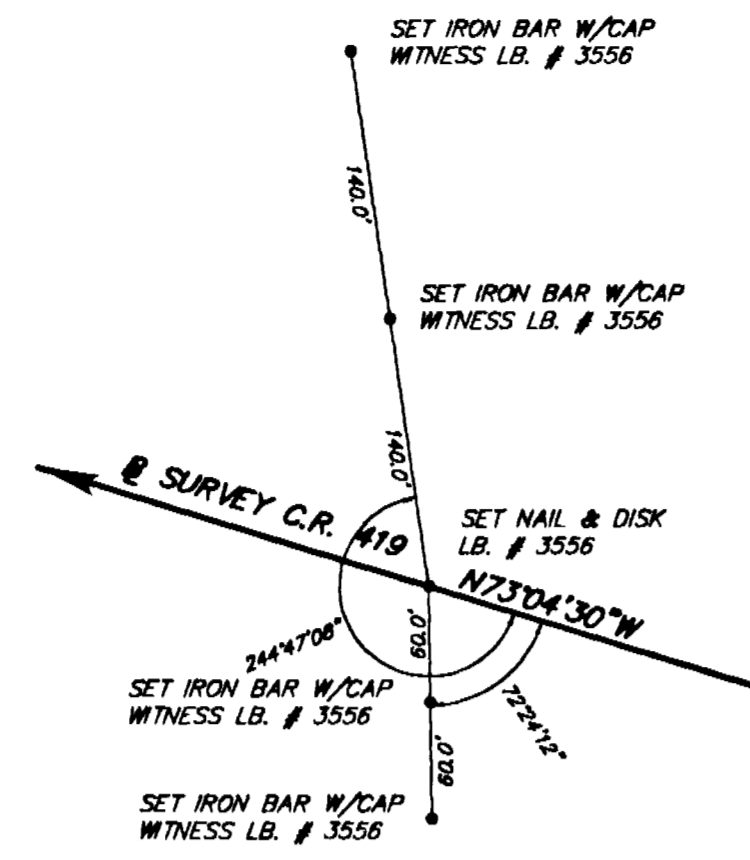
APPROVED BY	DESIGNED BY	DRAWN BY	CHECKED BY	DATE
DATE	REVISION	BY	DATE	REVISION

PROJECT NO. RP-049
COUNTY ROAD NO. 419
CITY OF OVIEDO, SEMINOLE COUNTY, FLORIDA

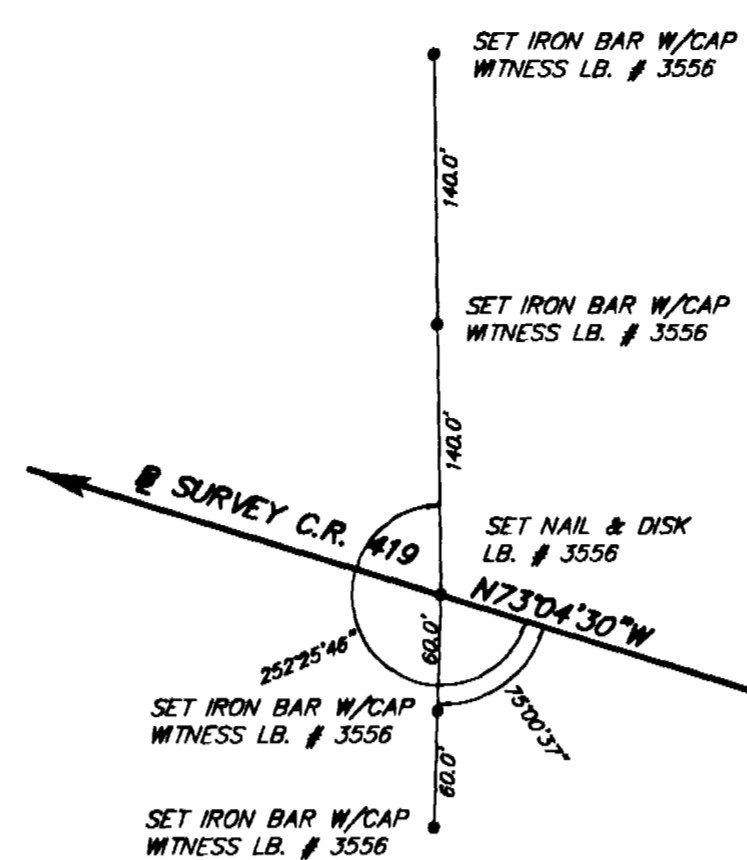
MAPS PREPARED BY
PEC
PROFESSIONAL ENGINEERING CONSULTANTS, INC.
200 EAST ROBINSON STREET, ORLANDO, FLORIDA 32801
SCALE: 1"=50'
FIELD BOOK NO.'S
814, 815, 816 & 887
SHEET 13 OF 15



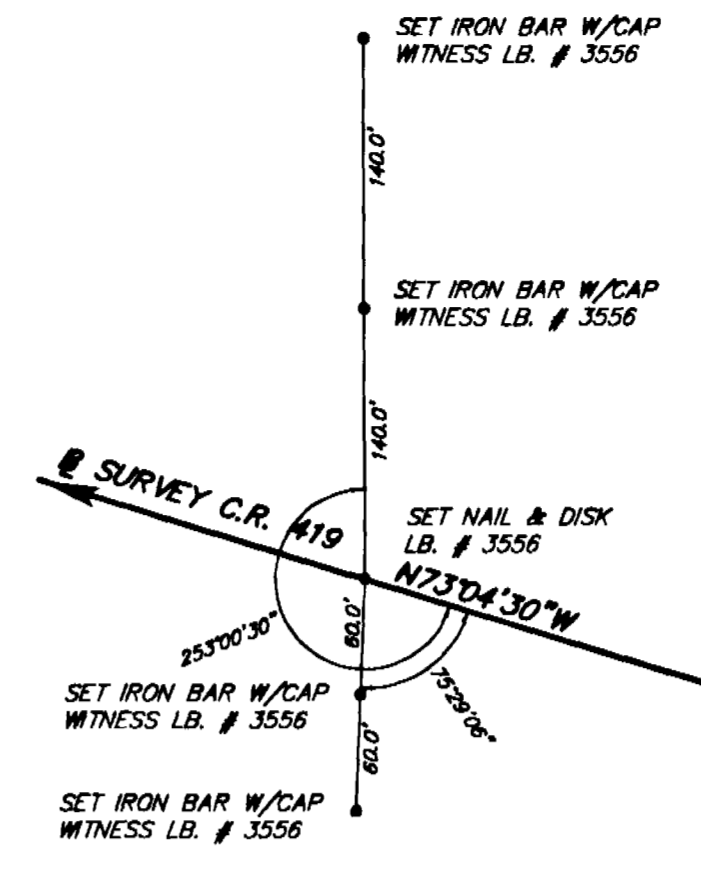
STA. 365+65.68
BEGIN @ SURVEY



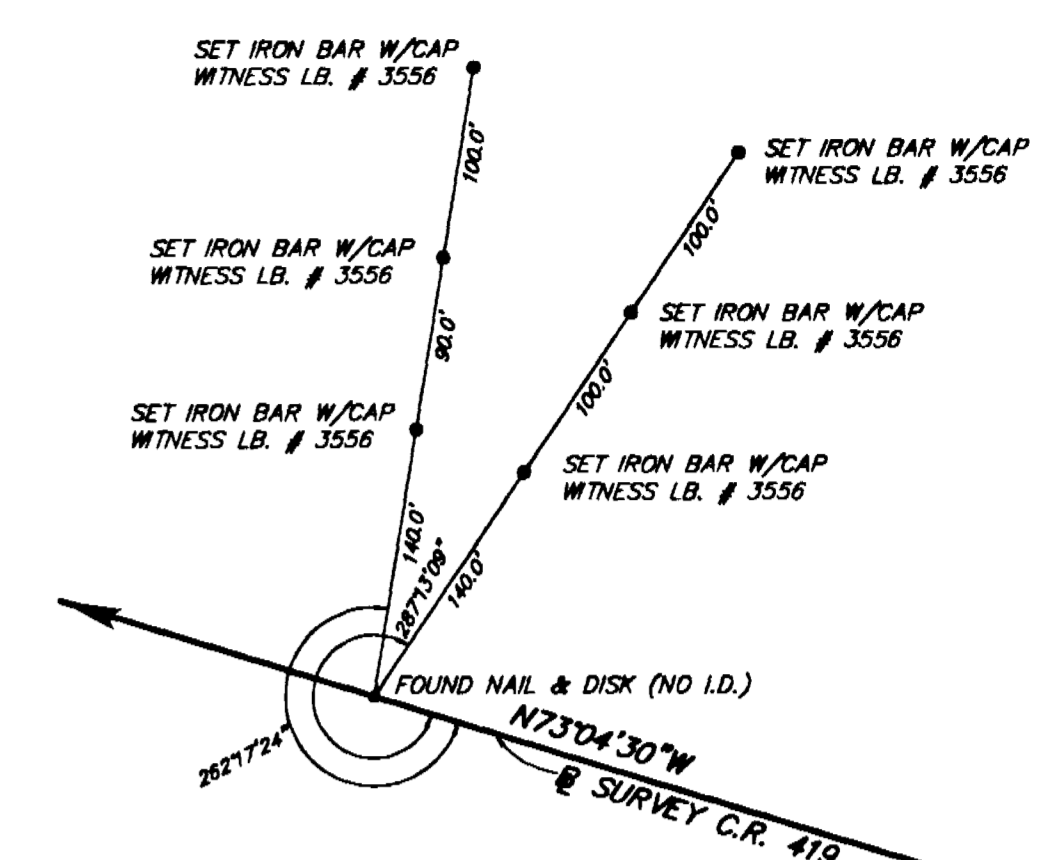
P.O.T. STA. 375+00.00



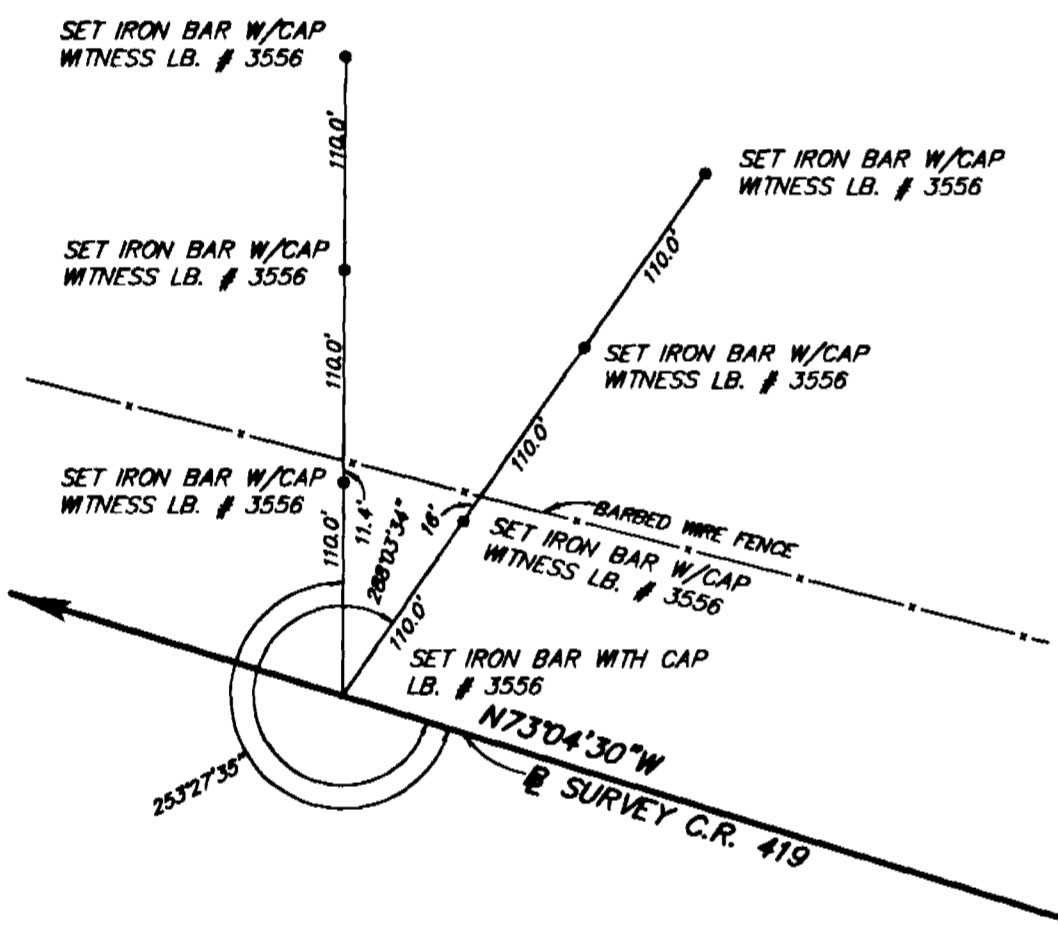
P.O.T. STA. 389+00.00



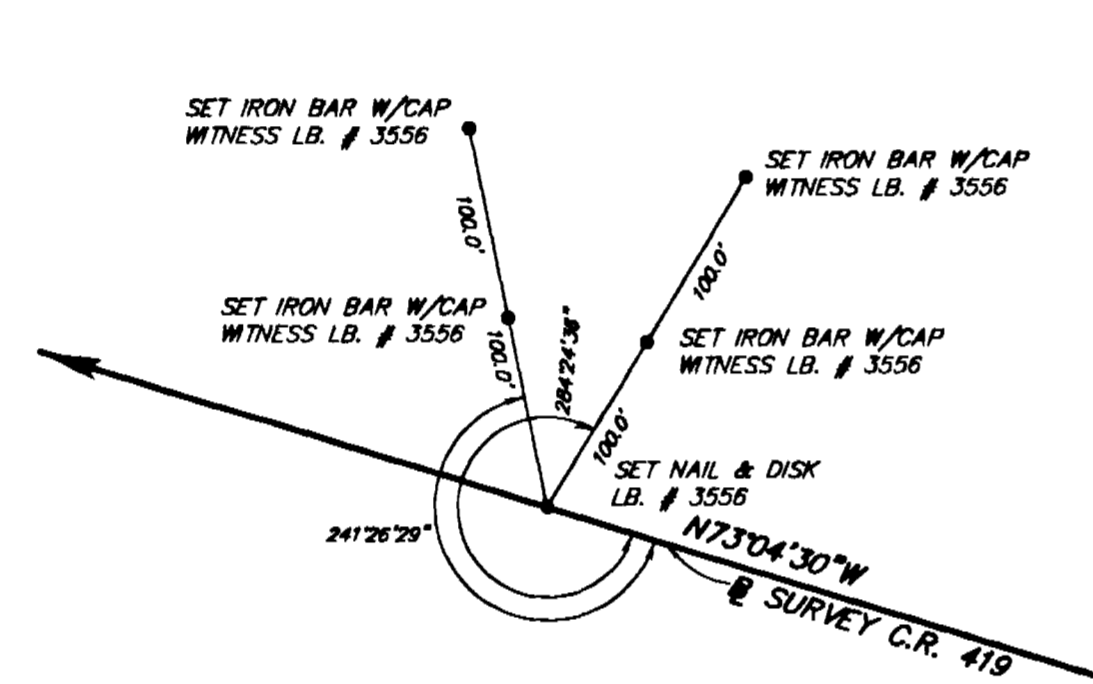
P.O.T. STA. 403+00.00



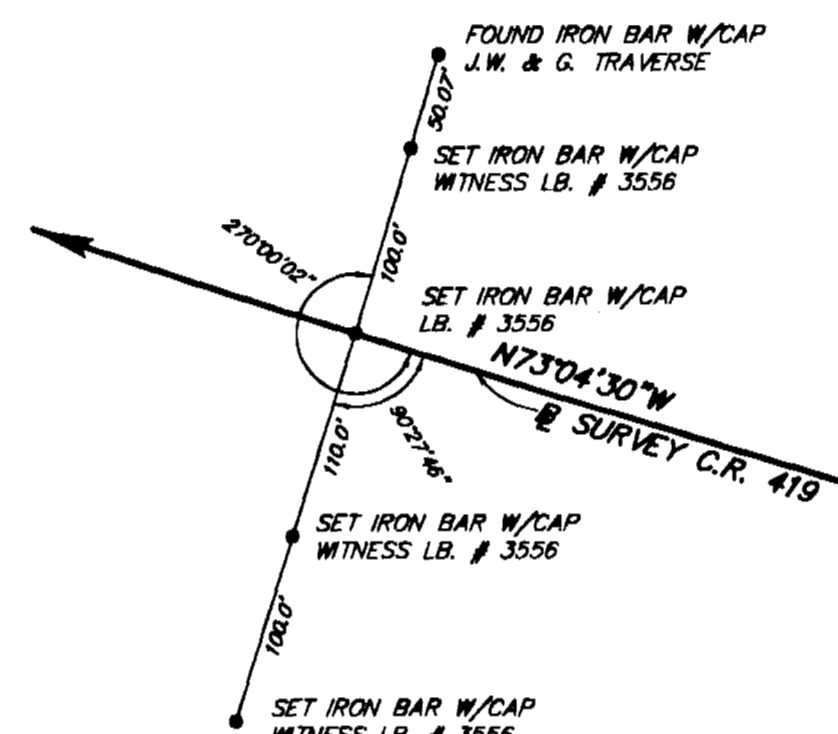
P.O.T. STA. 417+00.00 =
BEGIN SURVEY STA. 17+00.00
SEM. CO. PROJECT NO. PS-060



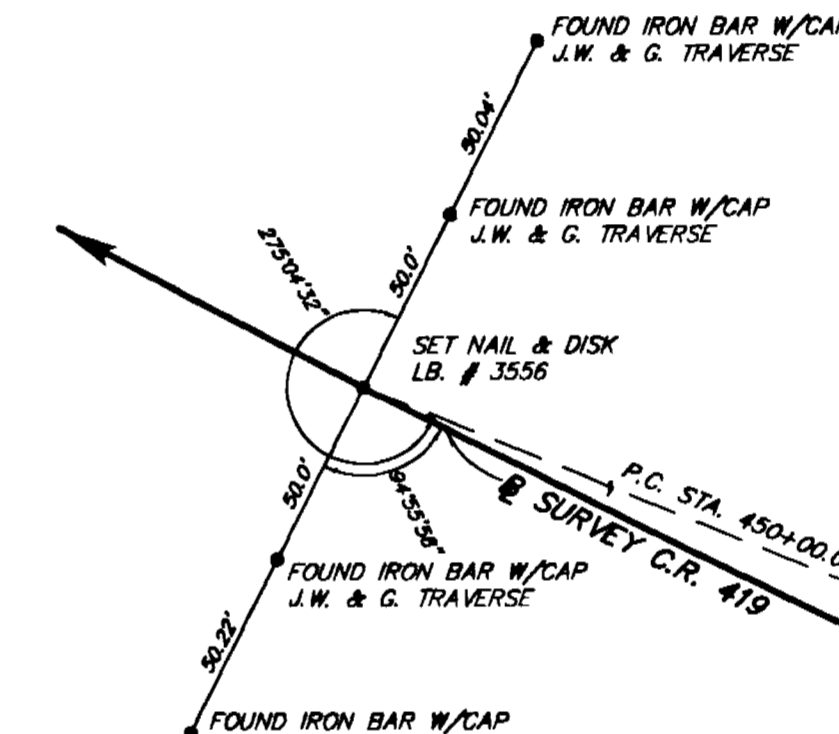
P.O.T. STA. 430+00.00



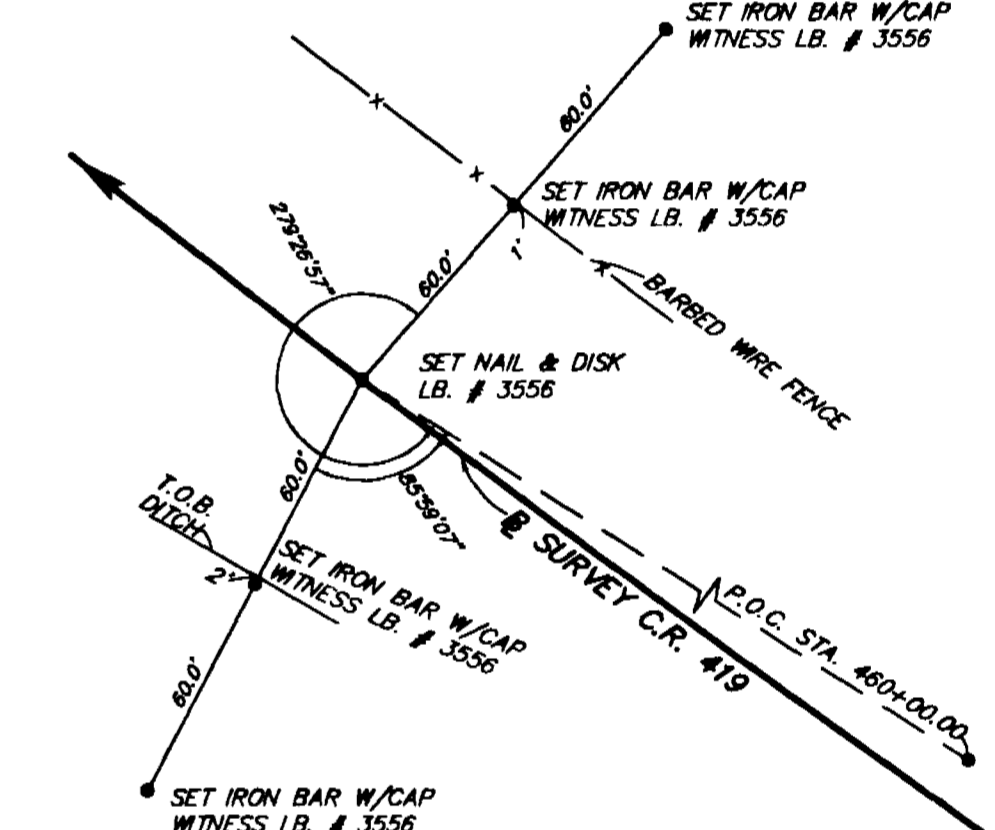
P.O.T. STA. 440+00.00



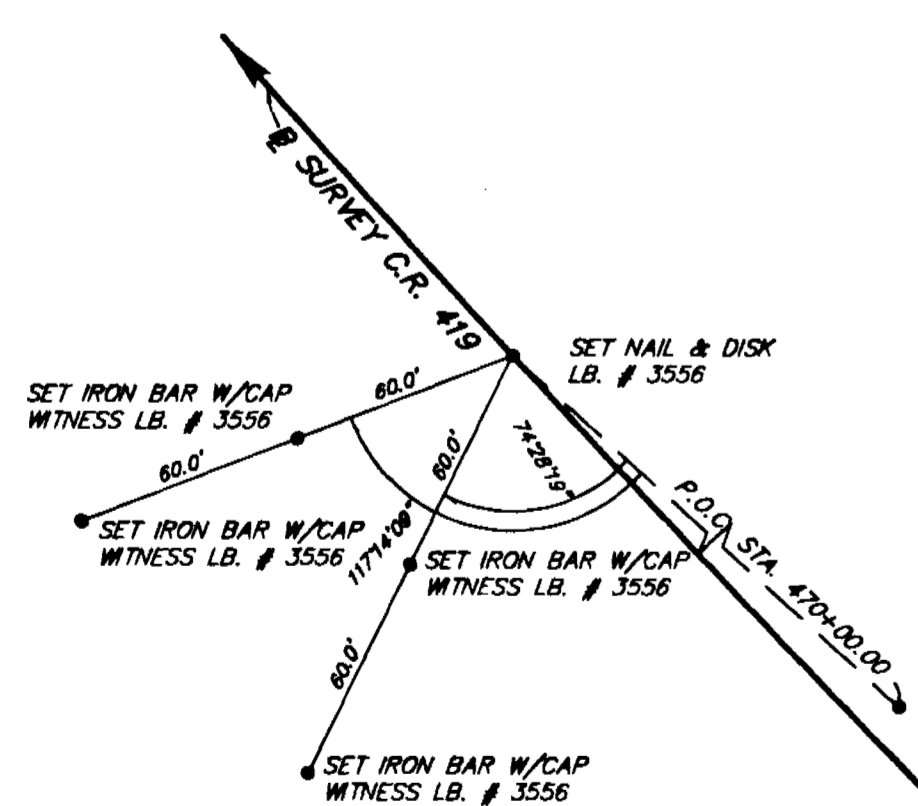
P.C. STA. 450+00.00 =
P.C. STA. 50+00.00
SEM. CO. PROJECT NO. PS-060



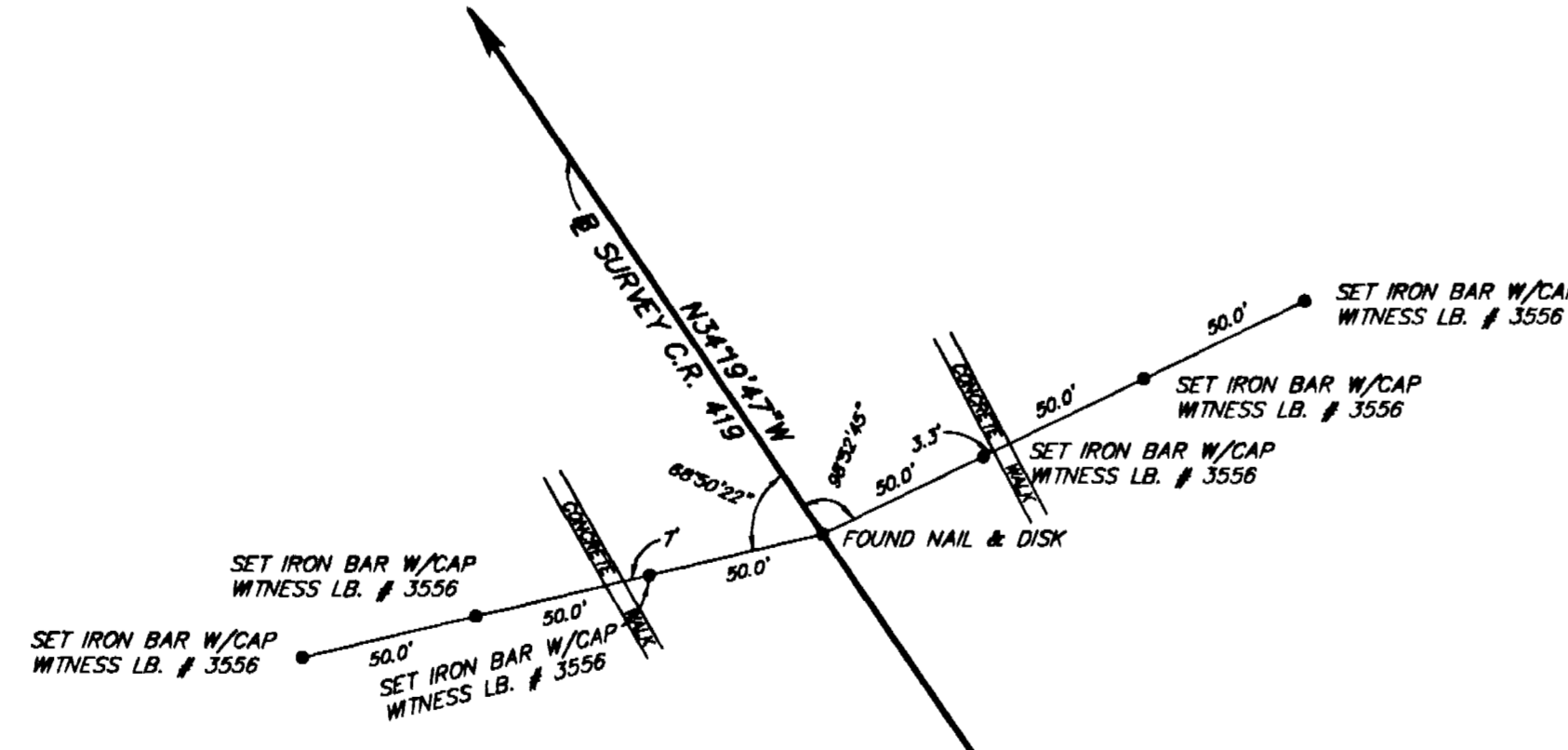
P.O.C. STA. 460+00.00



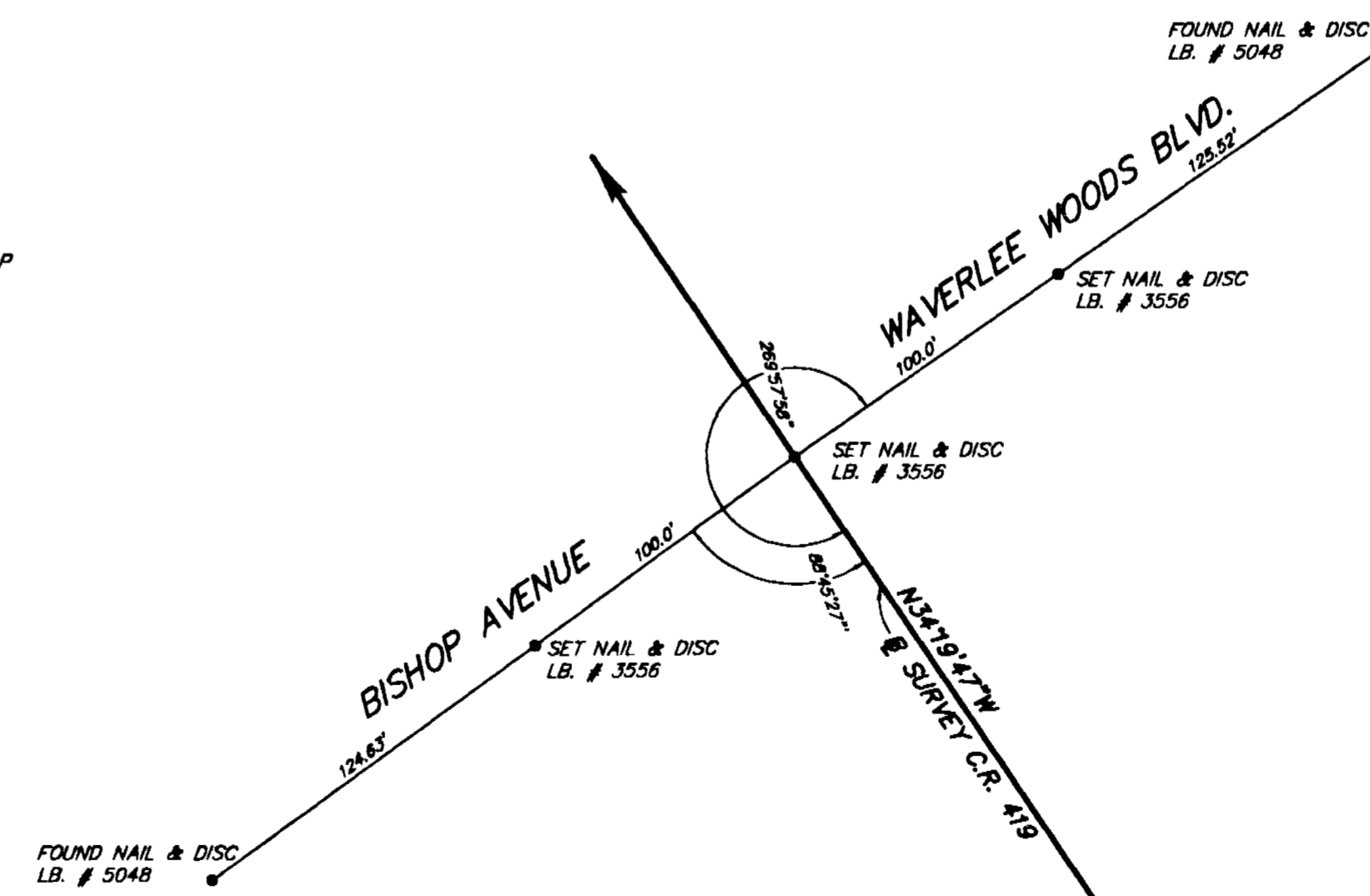
P.O.C. STA. 470+00.00



P.O.C. STA. 480+00.00



P.T. STA. 488+74.52 =
P.T. STA. 88+74.52
SEM. CO. PROJECT NO. PS-060



STA. 495+94.56
END @ SURVEY

SURVEY POINT IDENTIFICATION (STATION)	PROJECT COORDINATE VALUES		STATE PLANE COORDINATE VALUES		SCALE FACTOR
	NORTHING	EASTING	NORTHING	EASTING	
BEGIN @ SURVEY STA. 365+65.68	49916.625	52737.841	1568771.604	609146.904	0.99994368
P.C. STA. 450+00.00	52372.020	44668.842	1567550.583	613140.131	0.99994330
P.I. STA. 470+14.62	52958.517	42741.478	1571238.978	601081.559	0.99994465
P.T. STA. 488+74.52	54622.204	41605.320	1573493.443	598021.451	0.99994505
END @ SURVEY STA. 495+94.56	55216.817	41199.249	1574088.606	597616.259	0.99994511

NOTES:
1. SEE SHEET 1 FOR GENERAL NOTES AND LEGEND.

BASELINE OF SURVEY POINT REFERENCES

COUNTY OF SEMINOLE
ENGINEERING DEPARTMENT
RIGHT OF WAY ENGINEERING SECTION

DATE	REVISION	BY	DATE	REVISION	BY	DATE

SUBMITAL	DESIGNED BY	DRAWN BY	CHECKED BY	DATE
PRELIM - 30%	P.S.	A.M.J.	D.A.W.	3-20-98
PRELIM - 60%	P.S.	J.L.M.	D.A.W.	8-31-98
FINAL - 90%	P.S.	J.L.M.	D.A.W.	3-26-99
FINAL - 100%	P.S.	J.L.M.	D.A.W.	8-22-00

PROJECT NO. RP-049
COUNTY ROAD NO. 419 - PHASE I
CITY OF OVIEDO, SEMINOLE COUNTY, FLORIDA

MAPS PREPARED BY
PEC PROFESSIONAL ENGINEERING CONSULTANTS, INC.
200 EAST ROBINSON STREET, ORLANDO, FLORIDA 32801
FIELD BOOK NO.'S 814, 815, 816 & 887
SCALE: N.T.S.
SHEET 14 OF 15

