

*Navigating
the
Currents*



SEMINOLE COUNTY
FLORIDA'S NATURAL CHOICE



2008
County Manager's
Annual Report

This is a record of a year's journey . . . of staying true to our course of serving Seminole County despite an economic downturn and exposure to extreme forces of nature.

With strong leadership and a dedicated workforce possessing an unwavering willingness to serve, Seminole County successfully navigated strong currents to achieve its mission in 2008.



NAVIGATING THE CURRENTS

The year 2008 was particularly difficult considering the nation's economic downturn, state property tax reform, decreased revenue and increased operating costs of the County. With these hurdles also came the opportunity to be introspective and take a closer look at the programs and services we provide. Our challenge required us to take what was an already lean, fiscally responsible government and make it even leaner. To address this issue, we conducted a comprehensive review where teams comprised of employees representing different departments and levels examined the County's various programs, their costs and associated funding sources.

This information was analyzed, and the County implemented service level reductions in an effort to achieve a balanced budget, maintain Seminole County's fiscal responsibility and continue to provide effective and efficient government. The service level reductions affected hours of operation at Seminole County public libraries, parks and the museum; reduced funding for some local nonprofit agencies and affected some landscaping maintenance.

During this time, it also became apparent that workforce reductions would be unavoidable; 133 positions were eliminated from the County's budget. This decision was necessary to better prepare our organization to meet the fiscal challenges of the next several years.

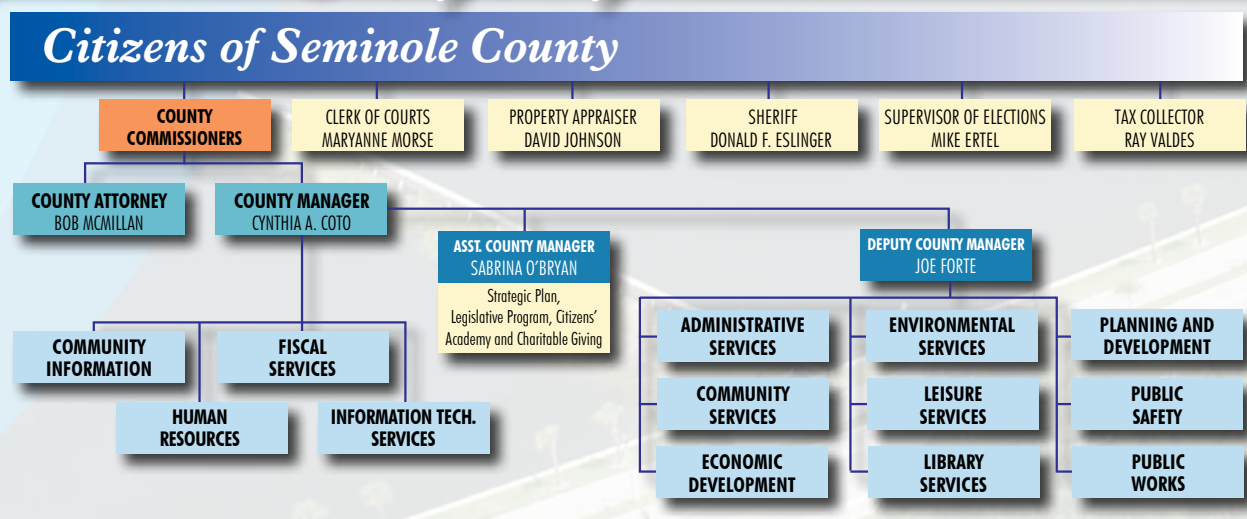
The current economic environment continues to be extremely challenging, and our services are even more important now than ever before. Seminole County will continue to seek additional sources of revenue and ways to reduce costs to handle all challenges and opportunities that come our way. Through proper planning, creativity and sensible decision-making, we are optimistic that Seminole County remains on the right course to a brighter future.

Sincerely,

Cynthia A. Coto, County Manager
Seminole County Government



Seminole County's Organization



Captain's Log - Major Milestones of 2008

January - Voters approved Property Tax Reform Initiative, SGTV moved to Channel 199
February - Fire-EMS Training Center officially opened, UCF Incubator opened, Commissioners voted to accept findings of the SeminoleWay study
March - \$1.6 M in State funds awarded to replace 9-1-1 system
April - County developed online bidding system for vendors, new "Symphony" automated computer system started for library patrons
May - County initiated budget cut measures, Gas to Energy Power Plant Ribbon Cutting, County received Florida Water Environment Association Public Education Award

June - Fire Station 13 Open House
July - 4-H youth wins State 4-H Horseman of the Year
August - Tropical Storm Fay hit, severe flooding occurs, resulting in County receiving Federal Disaster Declaration
September - Fiscal Year 2008/2009 budget approved by the Board of County Commissioners, fire station site acquired on Aloma Ave.
October - Fiscal Year 2008/2009 starts, Winter Springs Fire Department merged with the County
November - Commissioners approved a \$7 million grant to address the high incidence of foreclosures in identified areas of the county
December - Updated County Comprehensive Plan transmitted



At the Helm Seminole County's Board of County Commissioners



District 1
Bob Dallari, Chairman
407-665-7215
BDallari@seminolecountyfl.gov



District 2
Michael McLean, Vice Chair
407-665-7205
MMcLean@seminolecountyfl.gov



District 3
Dick Van Der Weide
407-665-7207
DVanDerWeide@seminolecountyfl.gov



District 4
Carlton Henley
407-665-7201
CHenley@seminolecountyfl.gov



District 5
Brenda Carey
407-665-7209
BCarey@seminolecountyfl.gov



Making A Difference In Your Community

The Board of County Commissioners (BCC) is elected at-large and represents residents in five commission districts. Serving four-year, staggered terms, the Board functions as Seminole County's legislative branch in which individual Commissioners serve as both legislative officers and fiscal representatives of the County.

The Board meets regularly at the Seminole County Services Building, 1101 East First Street in Sanford, on the second and fourth Tuesday of each month. In addition, the Board may meet in scheduled work sessions to discuss matters of general importance; however, no official action is taken during these sessions.

Minutes are recorded for all Commission meetings, work sessions and public hearings and are made part of the record in the County Commission Records Office. All meetings are also televised live on Seminole Government Television (SGTV) Bright House Networks cable Channel 199 and streamed to the County Web site. The regular BCC meetings are replayed at 11 a.m. on the Sunday following the meeting and at 7 p.m. on the Tuesday following the meeting. Archived video of the Commission meetings, agendas and minutes are available online at www.seminolecountyfl.gov.

The Board of County Commissioners also serves as your ambassadors or liaisons to many local, regional and state boards and committees. These boards and committees cover a variety of important matters that affect Seminole County residents and businesses including: the economy, transportation, regional and local planning, the environment, tourism, juvenile issues and the arts. The Board of County Commissioners is actively engaged in working for the good of the community.

Join the Voyage

Citizen involvement is instrumental in running a successful government. By volunteering, participating in programs and events and keeping abreast of what's going on, your government and the community will be an even better place to live, work, learn and play.

We're Just a Click Away

Log on to the Seminole County Web site, www.seminolecountyfl.gov, and find everything you need to know about our programs and services. Pay your water bill, fill out an employment application, read about upcoming events or watch Seminole Government Television (SGTV), which is streamed live 24-hours per day.

Watch Us on 199

In 2008, SGTV, the County's 24-hour cable channel, moved from Channel 9 on Bright House Networks to Channel 199. The award-winning channel features live County meetings; a monthly news-magazine show, *Seminole InSIGHT*; State and Federal programs and great original programming about the County's services and community events.

Donate Your Time

At Seminole County there's something for just about everyone when it comes to volunteering. Whether you love getting hands-on with dogs and reptiles, walking through the beautiful outdoors or making a difference in the life of a child, we can provide you with an opportunity. Check out the *"Make a Difference! Volunteer"* link on the County's Web site for more information.

Get Educated

Let's face it. The average person doesn't truly know what government really does, but Seminole County Government offers its residents an opportunity to change that. Through the *Citizens' Academy*, residents and the business community can get hands-on, interactive and educated about their government. In this nine-month program, elected officials, department administrators and other County staff host classes to familiarize participants with the responsi-

bilities of the 13 departments of Seminole County Government and its key officials. There have been more than 100 graduates thus far. Call 407-665-7224 for more information on this exciting program.

Be a Spectator

Attend public meetings, participate in County-sponsored events and see how your understanding and appreciation of your community grows. Throughout the year, the County offers many programs and events for your education and enjoyment, including Safe Kids car seat safety checks, the summer reading program, Responsible Pet Ownership Day and night hikes through our natural lands. To learn more about the County's codes and primary issues, attend one of our public meetings such as: the Board of County Commissioners, Code Enforcement Board, Planning and Zoning Board and the Board of Adjustment.

Know What's Going On

In an effort to better communicate with our citizens, Seminole County is offering a community newsletter, *Seminole County Outlook*, that can be e-mailed directly to you. The newsletter features Seminole County news, events and programs. A link to the newsletter can also be found on the home page of the County's Web site at www.seminolecountyfl.gov. Sign up today.

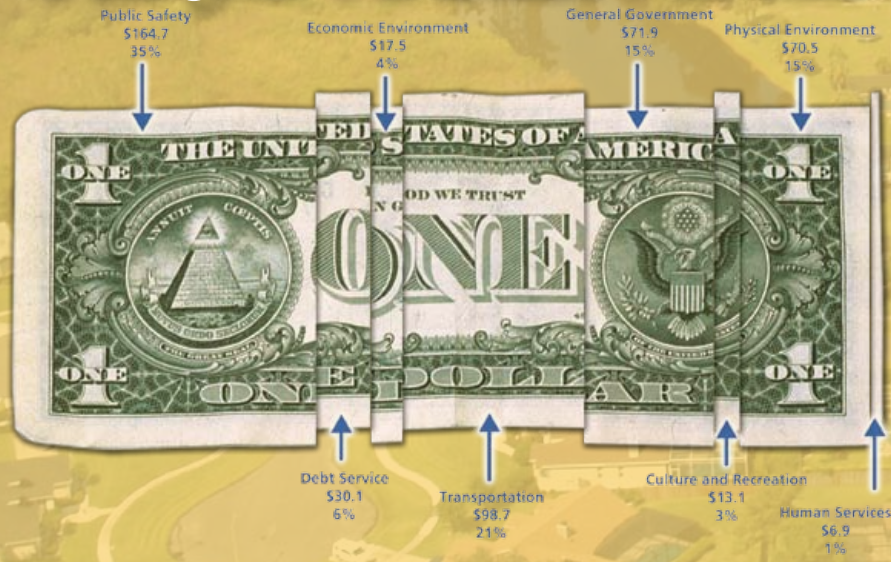
Invite Us for a Talk

Let us do the work for you. The Seminole County Speakers' Bureau is available to provide highly professional and knowledgeable public speakers for your civic organization, church, club, Home Owners' Association or school, and it's free. There are more than 100 topics to choose from including: animal care, financial matters, health and wellness, gardening and water conservation. Call 407-665-1183 to request a speaker or for more information.

Where Your Tax Dollars Come From



How Your Tax Dollars Are Used



A Snapshot of the County's Budget

The illustrations above depict the funds that Seminole County receives and how the money is used. Seminole County has one of the lowest millage (property tax) rates and the lowest number of employees per 1,000 residents compared to surrounding counties. Seminole County ensures that you get the best value for your tax dollars.



Charting our Course

Much of Seminole County's success rests upon the careful approach we take in responsibly planning for your future. With the implementation of a new strategic plan and a tradition of fiscal conservatism, Seminole County Government is confident that we have set our course for a successful future.

Planning for Your Future

The year 2008 presented many challenges, but it also afforded us the opportunity to put our newly-implemented strategic plan to the test. The County's new plan identifies areas for improvement and sets the blue print for a dynamic organization that is proactive and flexible enough to meet future challenges. The strategic plan gave us the confidence to enter 2008 with optimism. Countywide we looked at our programs and services and took measures to ensure that we are:

- providing the most effective and efficient government,
- continuing to address growth management and the environment, and
- advancing social and economic opportunities for our residents.

Our Biggest Challenge

Our first and greatest challenge of the year was property tax reform. House Bill 1B, implemented by the 2007 Florida Legislature, was a statutory rollback of the County's millage rate for Fiscal Year (FY) 2007/2008 amounting to 13 percent. Senate Joint Resolution 2D (Amendment 1), the "Property Tax Reform" amendment to the Florida Constitution approved by Florida voters in January 2008, provided for a modified \$25,000 additional homestead exemption and the portability of the "Save-Our-Homes" exemption. HB1B and Amendment 1 combined have reduced countywide general revenue by \$69 million while saving the average resident approximately \$452 over the same two-year period.

We're on a Budget Too

The FY 2008/2009 adopted budget for Seminole County totals \$987 million, a decrease of \$77 million from the FY 2007/2008 budget. The budget includes \$275 million of cash brought forward for ongoing capital projects funded by special revenue sources. The County's base budget,

defined as estimated incoming annual revenue, is \$495.5 million.

As a result of proactive measures taken over the past two years, the County continues to maintain a strong financial position overall. However future fiscal sustainability is a balancing act determined by ongoing planning focused on defining the level of public service delivery critical to the community's well-being, while still protecting the public from volatility in local taxes and fees.

The impacts of Property Tax Reform coupled with economic decline will permanently shape all future budgets. The magnitude of the challenge before us is without precedence in local government service. We have redirected the budget process to focus on prioritization of services in order to maximize service delivery and reduce programs that would have the least impact on core services.

Fast Facts About Seminole County

OUR CITIES

Altamonte Springs, Casselberry, Lake Mary, Longwood, Oviedo, Sanford and Winter Springs

OUR STATISTICS

Founded in 1913
Land Area (square miles): 344
Total Registered Voters: 264,779 as of 1/09

OUR DEMOGRAPHICS

Total Population (BEBR 2008): 426,413
Total Households: 158,906
Population Density (Pop/Sq. Mi): 1,206.0
Median Age: 39.2
Average Household Income: \$77,967
Median Household Income: \$61,285
Number of Employed Residents: 218,963
Number of Businesses: 21,276



Navigating by Land and Water

Much of Seminole County's appeal is owed to its natural beauty and resources. The County continues to be progressive in conserving the beautiful land, water bodies and natural resources of our environment that will sustain our future needs and continue to make Seminole County your natural choice.



Landfill Gas to Energy Power Plant

In 2008 a grand opening was held for the Landfill Gas to Energy Plant. Seminole Energy LLC now purchases landfill gas from the County for a 20-year term for the resale of power. Since its startup the facility has combusted more than 530 million cubic feet of landfill gas to produce nearly 22 million KWH of electricity, enough electricity to power nearly 1,700 homes.

Conserving Your Water

In many areas of Florida, as much as one-half of all potable water produced, also known as drinking water, is used to irrigate lawns. To conserve valuable fresh water, Seminole County is implementing projects to substitute highly-treated reclaimed wastewater for potable water, which can be used to irrigate residential lawns. The projects involve constructing new reclaimed water distribution pipelines within developments primarily in the County's Northwest Service Area. These projects are termed retrofit projects because existing neighborhoods are being equipped with the new pipelines. They provide two-fold benefits: water conservation and alternative wastewater disposal.

Yankee Lake

In 2008 Seminole County made a request to the St. Johns River Water Management District (SJRWMD) to withdraw 5.5 million gallons per day of water from the St. Johns River as a source of drinking water and irrigation, thus conserving the Floridan Aquifer. With the project in place, residential reclaimed water utility users could save an estimated 21 gallons per day. With more than 47,000 customers, that is a savings of almost one million gallons per day. However, the County's request was met with opposition. Entities that opposed the permit went against a well-researched proposal that had been part of the District's long-term water supply plan for seven years with no prior objections. Administrative hearings were held in October to review the issue, and an administrative judge found in favor of Seminole County in January 2009. A decision from the St. Johns Water Management District on the judges ruling is expected in spring 2009.

Environmentally Responsible Programs

Seminole County has many programs to help you be environmentally responsible. Tire Amnesty Day, E-Scrap Collection, Recycling and the Sharps Program are all steps

toward preserving our environment. During Fiscal Year 2007/2008, Seminole County Solid Waste managed 334,000 tons of garbage; 52,000 tons of yard waste; 16,200 tons of recyclables; 6,900 tons of construction and demolition debris; 803 tons of white goods-appliances and 560 tons of waste tires. The Household Hazardous Waste Program collected and managed 759,230 pounds of hazardous waste; 321,700 pounds of old electronics; 11,200 pounds of medical sharps (needles) and 8,140 gallons of used oil.

Through our Irrigation Evaluation Program, the County helps its utility customers identify ways to conserve water and reduce their water bills. In 2008, 500 households participated in irrigation evaluations. Of those households, 150 had rain sensors installed or repaired. These sensors are designed to override the cycle of an automatic irrigation system when adequate rainfall has been received, thus saving millions of gallons of water and money.

Respect for Our Lands

Recognizing the vital role that conservation and natural resources play in our community, the Natural Lands Program worked to contribute to our clean water and land. These areas provide a framework for the sustainable management of our native plants, animals and their habitats. Seminole County manages 6,622 acres of Natural Lands at 13 separate locations and maintains 70 miles of unpaved trails and interior roadways.

The County also maintains more than 350 medians and 60 miles of landscaped roadways through environmentally-sensitive xeriscaping. While medians and roadways help improve aesthetics, they are important to traffic safety.





New Fire Station 13 Open House

Fire Station 13 on State Road 436 in Apopka celebrated its grand opening. The station was built to replace the original station whose location and physical condition no longer adequately served today's fire department operations. Station 13 is one of the busiest in the County, responding to more than 4,000 alarms annually.



Manning the Life Boats

At one point or another in life, we will all be beneficiaries of some form of help. Whether it be a hand out during hard financial times or a life-saving measure, Seminole County will be there to "man the lifeboats."

Assisting Our Citizens

Last year, more than ever, our residents were in need of financial assistance due to the bleak economic climate and downturn in the housing market. Through the County's Community Assistance Division, we were able to provide funding in a variety of essential areas. One of the most significantly-impacted areas was housing. State Housing Assistance funds enabled 69 families to purchase homes by providing \$5,150,000 in second mortgage funding and helped 19 homesteads prevent foreclosure proceedings by providing \$80,000 in non-repayable grants. Federal and State grant funds in the amount of \$711,000 were used to subsidize operating costs of homeless shelters and construct 14 shelter beds/facilities. The Medium and Long-term Rental Assistance program served more than 115 residents in the amount of \$515,000, and the Emergency Financial Assistance Program assisted 1,130 residents in the amount of \$563,000 with medical, utility, childcare and eviction prevention payments.

Answering the Call for Help

Seminole County Public Safety provides a very different but essential type of emergency assistance. In 2007/2008, the Emergency Communications Center answered more than 61,000 calls for service. The Emergency Communications Center had its highest volume of calls during the month of August when Tropical Storm Fay occurred, totaling 5,575 calls. Vehicle accidents for the fiscal year were the most common incidents with more than 4,700 calls. The E-911 Administration Office continues to take proactive steps to ensure the integrity of the E-911 System; a new voice recording system was installed, and improved call address error correction procedures were put into place in 2008.

Responding Quickly When Needed

To improve response time for emergency calls, the County is considering the addition of new fire stations. To reach that goal, property was purchased on State Road 426 at Via

Loma for the construction of Fire Station 29. A feasibility study was also conducted for the construction of Station 19 at Lake Emma and Longwood Hills Road in Longwood. The County held a community meeting to discuss plans for the new location and hear input from nearby residents. Station 19 is expected to be under construction by late 2009 and completed by 2010.

Training Emergency Responders

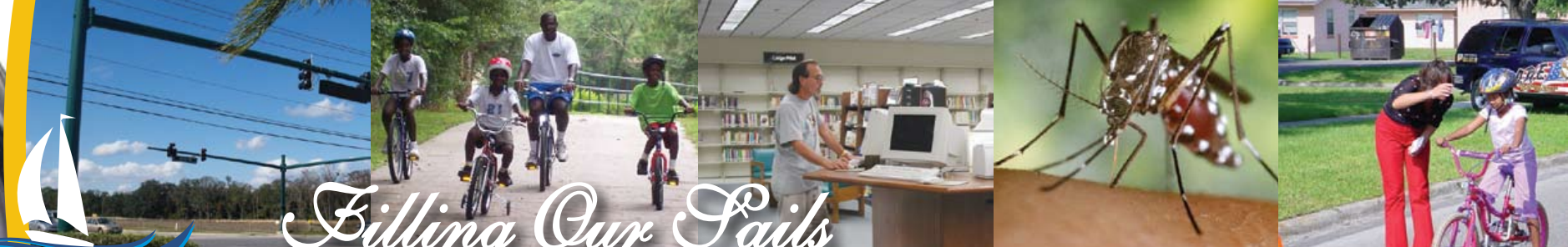
The Fire/EMS Training Center in Longwood officially opened. Last year there were 67,000 hours of firefighter training; 18,900 hours of EMS training; 5,100 hours of special operations training and 1,400 hours of hazardous materials training. The County also received grants and donations to further assist in the training of Fire/EMS/Rescue personnel such as a GPS tracking device for firefighter safety and firefighting bunker gear.

Helping Residents to Stay Safe

The County continues to educate residents and provide them with the means to influence their own safety. More than 200,000 public contacts were made in 2007/2008 for this very reason.

A grant-funded Weather Radio Initiative enabled the County to provide weather radios to more than 1,500 senior citizens and low-income families. The radios are especially necessary due to the frequency of severe weather in Central Florida.

The County's PrepareSeminole.org Web site played a significant role in educating our residents before, during and after Tropical Storm Fay. It was the central location for public information and tropical storm updates for our residents, employees and the media.



Filling Our Sails

Seminole County is responsible for providing much of the infrastructure we use every day. It's the well-maintained roads you travel, the library you borrow books from, the parks you play in and the programs you depend on that keep the community sailing in the right direction.

Getting Around

One of the factors residents use to determine how well their government is doing is the quality of the roads. In 2008, 8.5 miles of major roadway widening projects were completed, including Airport Blvd. from U.S. 17-92 to SR 46 and the portion named Martin Luther King Jr. Blvd., as well as Seminola Blvd./East Lake Drive from Lake Drive to Tuskawilla Road. There were also 20.8 lane miles of arterial and collector rehabilitation projects completed under the Second Generation Sales Tax (2001), including Country Club Blvd. and Lake Howell Road. A total of 34.5 lane miles were completed under the Local Street Resurfacing Program.

With pedestrian and bicycle safety in mind, improvements were made to the County's sidewalks and trail network last year. Approximately four miles of new sidewalks were constructed, and 127,000 lineal feet of sidewalk were replaced. Four paved miles of the Cross Seminole Trail and a new pedestrian overpass spanning U.S. 17-92 at General Hutchison Parkway were completed.

A Haven During Hard Times

Library service hours were affected by budget reductions in 2008. Weekday hours were reduced, and branches are now closed on Friday. Despite reduced hours the branch libraries continue to be a haven for our community, providing free books, educational and entertaining programs, computer access and resources when people need them most. Approximately 1,169,000 people visited the library in 2007/2008, checking out what amounts to 6.5 books per Seminole County resident. The library's youth programs are also very popular with 94,143 people attending last year. In 2008 one of the library's major projects was the installation of the Symphony Library Automation System, a Windows-based Web page that provides updated access to library accounts and electronic and book resources.

For Your Leisure

If you visited Seminole County Parks or Natural Lands during Fiscal Year 2007/2008, you were one in four million. Maintaining and managing these parks and natural lands only costs you and every other County resident less than five cents per day. Seminole County has 24 parks and facilities and more than 80 miles of paved and unpaved trails where you can exercise, play and enjoy leisurely activities. Last year more than \$450,000 in grant funds were received for new construction of Jetta Point Park and environmentally-responsible enhancements at Wilson's Landing Park and the Trails system.

Mosquitoes Under Control

As we participate in outdoor activities, we can be thankful for mosquito control. The consolidation of mosquito control for the County and its seven cities was a major accomplishment in 2008. There were 874 requests for service Countywide, treatment of 41,859 acres for adult mosquitoes and more than 1,300 acres for larval mosquitoes. Last year the program became State-approved, which makes it eligible for State aid.

Educating a Community

The County offers education programs ranging from kids' pizza-making classes to cancer prevention classes. One of our most important programs is SafeKids Seminole, educating more than 7,000 about injury prevention measures for children, particularly those involved with transportation such as proper car seat installation and bicycle helmet use. Seminole County also had 105 environmental education programs reaching nearly 5,000 participants last year, and the Extension Service had more than 64,344 educational contacts.



Safe Kids Car Seat Safety Checkups

Seminole County partners with local police and fire departments to provide education and training to help ensure the safety of our children. Safe Kids Seminole County conducts numerous car seat safety checkups throughout the year to make sure child car seats function properly. To find out more, go to www.seminolesafekids.org.





Finding Friendly Ports

Building partnerships with the residents and businesses within our community is an integral part of sustaining our future. Seminole County continues to foster relationships that improve our community economically, socially and environmentally.

Growing New Businesses

Business continues to thrive in Seminole County. Through our partnership with the Metro Orlando Economic Development Commission, we established 12 expansion or relocation projects, creating or retaining 1,072 jobs, generating more than \$44 million in capital investment and occupying 327,528 square feet of space.

U.S. Hwy 17-92 Business Corridor

One of the major business districts in the County is the 17-92 Corridor. The 17-92 Community Redevelopment Agency (CRA) is a partnership formed between the County, Casselberry, Lake Mary, Sanford and Winter Springs. It's goal is to bring financial, regulatory, density, Floor Area Ratio (FAR) bonuses for Mixed Use development and job creation incentives to the corridor, addressing blight and encouraging redevelopment to slow urban sprawl. In 2008 the CRA was designated as the Seminole Economic Enhancement District (S.E.E.D.), which makes businesses eligible for financial regulatory and development incentives. The CRA is in the process of developing another program, Beginning to L.E.E.D (Leadership in Energy and Environmental Design), that will offer benefits to businesses developing green initiatives. More can be learned about the CRA at its new Web site: www.redevelopmentinseminole.com.

Business Programs @ the Library

For small business owners and those interested in starting a business, the Seminole County Public library System, in a joint venture with the Small Business Development Center at Seminole Community College, offers free seminars. Last fiscal year 787 potential business owners attended the library's Small Business Seminars.

Access to the Job Market

The creation of new jobs also creates the need for a qualified workforce. Many of our residents depend on the assistance of Work Force Central Florida. In June 2008 the Lake Mary Office closed its doors due to reduced State

and Federal funding, causing our residents to travel to East Orlando, almost 20 miles away, for services. The County stepped in and fostered a partnership with the agency to sub-lease space at the Reflections Plaza on Lake Mary Blvd. Providing this lease allowed Seminole County residents to continue having access to services, such as the Welfare-to-Work Program and employment training seminars, right in their own community.

Partnering to Help Animals

To address the issue of animal overpopulation, Seminole County contracted with the Society for the Prevention of Cruelty to Animals of Central Florida (SPCA) to provide free spay/neuter services to targeted areas in Seminole County to help reduce unwanted litters and stray animals. Midway was the first area to benefit from this program.

Partnering with Citizens

Volunteerism is essential to the success of our organization. These partnerships not only create a significant savings to the taxpayers, they also educate residents about the County and give the participants a sense of pride in our community. Volunteers and Community Service Workers provide services in a variety of areas including: Natural Lands, Animal Services, Community Services, Extension Services and Public Works.



UCF Small Business Incubator

The Seminole County/Winter Springs Incubator opened its doors in 2008 to serve high growth start-ups in Seminole County. The incubator is a partnership between UCF, Seminole County Government, the City of Winter Springs and the Florida High Tech Corridor Council, providing support to start-up companies in the community. By the end of 2008, the Incubator accepted eight resident client companies, two virtual client companies and one anchor tenant.

Volunteers Made a Difference in 2008	
	73 Miles of River Adopted
	36.75 Miles of Roads Cleaned
	24,100 Hours Logged by Community Service Workers
	975 Hours Contributed by Watershed Action Volunteers
	11,629 Hours Donated by Animal Welfare Volunteers
	11,277 Hours Donated by 4-H Youth and Adults





Weathering the Storm

In August 2008 Seminole County experienced its worst flooding in recent history. A storm that was initially projected to bring a little wind and rain, stalled north of Central Florida, creating an emergency situation for County residents and businesses. Teamwork prevailed as everyone worked together to weather the storm.



The Flood

Tropical Storm Fay dumped as much as 16 inches of rain on Seminole County and the surrounding region, resulting in flooding, road closures and damage to many residences and businesses. In response to the storm, the Seminole County Emergency Operations Center (EOC) activated on Monday, August 18, 2008.

Going Where We're Needed Most

Washed out roads on the eastern side of the County, prompted the Department of Public Safety to set up a temporary fire station in Chuluota to maintain responsiveness. An area staffed by the Seminole County Sheriff's Office and Seminole County Fire Rescue was also established in Geneva at the intersection of State Road 46 and County Road 426 to provide a location for public information and rescue and recovery assistance, including sandbag distribution, courtesy checks for the elderly and evacuations.

Working Together

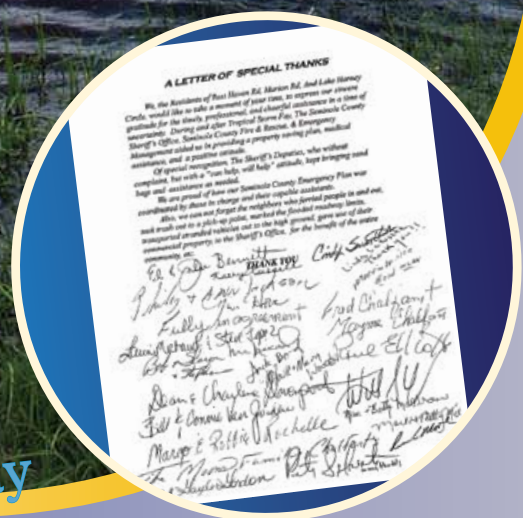
Public Works and the Seminole County Sheriff's Office coordinated efforts to place signage at flooded roadways. More than 100 additional road signs, displaying the wording "Detour" and "No Wake," were manufactured by the County's Traffic Engineering Division as a result of the tropical storm. The County deployed pumps to remove water from neighborhoods experiencing severe flooding in the Sanford area and in eastern Seminole County, logging 1,100 hours of pumping for those areas. County resources were also used to clear roadways, fill pot holes and control traffic. Roads-Stormwater staff removed more than 4,400 cubic yards of debris from drains and used more than 62 tons of asphalt to repair roads as a result of the storm. Sandbag operations were opened in six locations around the county. Minimum security County inmates, County staff and local volunteers filled nearly 120,000 sandbags to aid homeowners threatened by flooding.

Lending a Hand

Nonprofit groups and religious organizations provide great support during times of disaster. Two shelters, Harvest Time International in Sanford and First Baptist Church in Geneva, opened to assist evacuees. Many more County-affiliated nonprofit agencies provided emergency aid to residents, including the Christian Sharing Center. The demand for assistance was so overwhelming that they and other agencies had to request donation assistance from the public. Seminole County employees held a pantry drive to assist one of the organizations, collecting nearly 4,000 pounds of donations and enough money to feed six families (24 people) for one week.

FEMA Assistance

On August 31, 2008, Seminole County received an Emergency Disaster Declaration from FEMA, making federal individual grants and low-interest loans available to residents and businesses affected by Tropical Storm Fay. A Disaster Recovery Center was established at the Reflections Office Plaza for residents whose property suffered damage due to conditions brought on by the storm, which fell within the scope of the declaration. Assistance was offered for temporary housing, home repairs and other serious disaster-related expenses not met by insurance or other assistance programs. Low-interest loans were also made available from the U.S. Small Business Administration (SBA) for residential and business losses not fully compensated by insurance. More than 1,300 applications for assistance were filed, and more than \$967,000 in funding was approved for Individual Assistance.



The Effects of Tropical Storm Fay

One Seminole County neighborhood graciously sent a letter of appreciation for the planning and responsiveness that allowed the County and its residents to successfully weather Tropical Storm Fay. Seminole County wants to thank this neighborhood as well as all of the other agencies, residents and volunteers for their support and cooperation during this time of need.





*Sailing into Uncharted Territory
Faith is raising the sail of our little boat until it is caught up in the soft winds above and picks up speed, not from anything within itself, but from the vast resources of the universe around us. ~W. Ralph Ward*

Get Ready to Play in 2010

The design of Jetta Point Park began in 2008, and construction is anticipated to be completed by early 2010. The site, which is adjacent to SR 417, is comprised of 48 acres. The park will include four lighted softball fields, four lighted multi-purpose fields, a playground, an equestrian paddock and concessions.



Building a Brighter Economy

Seminole County is taking the necessary steps to build a brighter economy for our future. One example is SeminoleWay. This initiative was conceived by a visionary partnership of business and government leaders to create a strategic land use and economic development plan focused on attracting high value/high wage jobs and businesses along the State Road 417 corridor to the Port of Sanford.

The SeminoleWay Plan guarantees a common land use agreement; 20-year land inventory; balanced, mixed-use development; environmental responsibility and innovative strategic planning. SeminoleWay will join businesses, educational institutions and neighborhoods together in a modern, sustainable community, allowing for continued economic growth, a decrease in the tax burden on homeowners and protection of the environment. Over the past year, a comprehensive study of the corridor has taken place which included an inventory of available land and revealed where business clusters could be located.

SunRail is on the Horizon

And the results are in. Central Florida residents voted to name the future \$650 million commuter rail project—SunRail. Seminole County will have four stops in Sanford, Lake Mary, Longwood and Altamonte Springs as part of the 61.5 mile system. Last year the County purchased land for the project and began working with the four cities to finalize design elements of the stations and with the Florida Department of Transportation to purchase a substantial amount of the right of way needed for those stations. Environmental assessments were approved, and authorization was received for the final design of the project. SunRail will ultimately link commuters between Volusia, Seminole, Orange and Osceola Counties. The first leg of the system linking DeBary to Orlando will begin service in 2011. A link to the SunRail Web site can be found on the County's homepage.

Five-Points Master Plan

The Five-Points Complex is a 119-acre property comprised of several parcels which house a number of County operations including the Criminal Justice Center, Public Safety Building, Traffic Engineering, Animal Services, Roads-Stormwater, the Historical Museum and Facilities Maintenance. While many County Services are concentrated in this area, there are others in various locations around the County. The master planning process was designed to identify which County facilities and functions should be consolidated into an organized complex at Five Points and how the complex should grow and evolve over time as the County and its services grow. Last year the County acquired 28 acres on East Lake Mary Boulevard to allow for, at a minimum, the relocation of County's Fleet and Public Works Services. By relocating these facilities, the centralization of all county functions can begin and focus on the Five Points Complex. The master plan provides for a more efficient work force and a more convenient design for our residents.

Planning for Your Future

Seminole County took steps to enhance the existing Mixed Development Future Land Use designation to allow for incentives for the construction of green buildings and workforce housing—affordable housing that's critical to workers such as nurses, teachers and firefighters, at strategic locations. The designation also encourages an area friendlier to pedestrians that will easily be served by planned transit improvements. The Mixed Development Land Use will be initially implemented along the commercial area of the U.S. 17-92 Corridor.

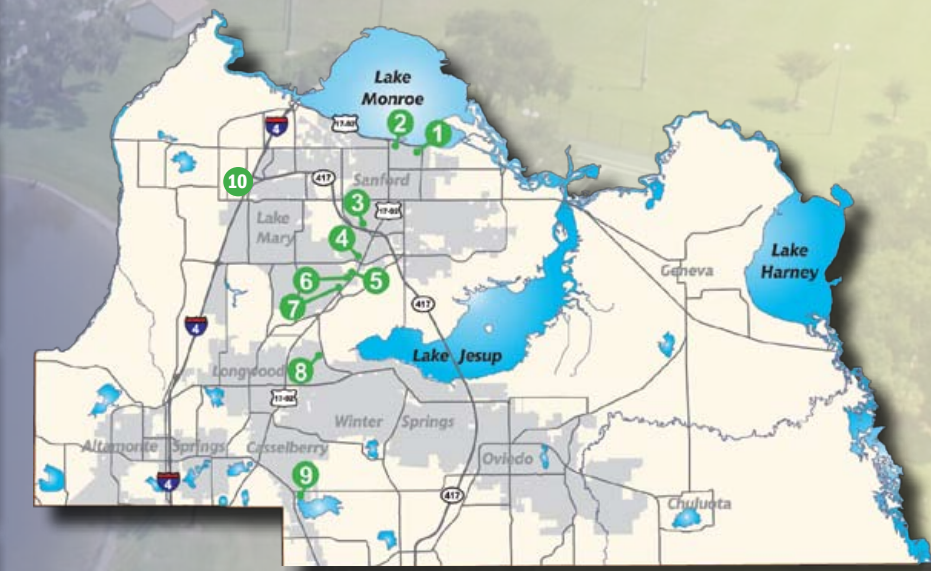
LOCATIONS OF County Offices

- 1 COUNTY SERVICES BUILDING**
 1101 East First Street, Sanford
 Location for: Administration, Board of County Commissioners, Community Information, Fiscal Services, Human Resources, Information Technology Services, Planning & Development, County Attorney, Property Appraiser and Tax Collector
- 2 CIVIL COURTHOUSE**
 301 North Park Avenue
 Sanford
 Location for: Court Functions - Civil Trials and Clerk of the Circuit Court (Marriage Licenses, Passports, Power of Attorney)
- 3 9 HEALTH DEPARTMENT**
 400 West Airport Boulevard
 Sanford - (3)
 108 Sausalito Boulevard
 Casselberry - (9)
 Locations for: Health Services and Health Department
- 4 REFLECTIONS PLAZA COMPLEX**
 Northwest corner of Lake Mary Boulevard & Hidden Lake Drive
 Sanford
 Location for: Environmental Services, Community Services, Veterans' Services and Public Works
- 5 SHERIFF & PUBLIC SAFETY**
 100 Bush Boulevard and 150 Bush Boulevard
 Sanford
 Location for: Seminole County Sheriff's Office and Public Safety
- 6 CRIMINAL JUSTICE CENTER**
 101 Bush Boulevard
 Sanford
 Location for: Court Functions - Criminal Trials and Clerk of the Circuit Court (Traffic Ticket Payments)
- 7 FIVE POINTS OPERATIONS CENTER**
 Northwest corner of County Home Road and U.S. 17-92, Sanford
 Location for: Administrative Services, Traffic Engineering, Animal Services, Museum of Seminole County History, Roads - Stormwater and Extension Service Office
- 8 CENTRAL TRANSFER STATION**
 1950 State Road 419
 Longwood
 Location for: Solid Waste Management Including Recycling, Household Hazardous Waste Collection, Sharps Collection, etc.
- 10 ECONOMIC DEVELOPMENT**
 1055 AAA Drive
 Heathrow
 Location for: Economic Development Department

www.seminolecountyfl.gov



LOCATION MAP OF COUNTY OFFICES



Contact Information:

FOR EMERGENCIES, DIAL 9-1-1.

*For general County information,
dial 311 or (407) 665-0311.*

SEMINOLE COUNTY GOVERNMENT
(407) 665-0311

www.seminolecountyfl.gov

1101 East First St. • Sanford, FL 32771

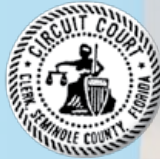


CLERK OF THE CIRCUIT COURT

(407) 665-4330

www.seminoleclerk.org

Civil Courthouse • 301 North Park Ave.
Sanford, FL 32771



HEALTH DEPARTMENT

(407) 665-3000

www.seminolecohealth.com

400 West Airport Blvd.
Sanford, FL 32773



PROPERTY APPRAISER

(407) 665-7506

www.scpaf1.org

1101 East First St.
Sanford, FL 32771



SHERIFF'S OFFICE

(407) 665-6600

www.seminolesheriff.org

100 Bush Blvd. • Sanford, FL 32773



SUPERVISOR OF ELECTIONS

(407) 708-7700

www.voteseminole.org

1500 E. Airport Blvd. • Sanford, FL 32773



TAX COLLECTOR

(407) 665-1000

www.seminoletax.org

1101 East First St. • Sanford, FL 32771



Telephone Directory:

County Manager's Office (407) 665-7219
County Attorney's Office (407) 665-7254

COUNTY DEPARTMENT PHONE NUMBERS

Administrative Services (407) 665-5274
Community Information..... (407) 665-1175
Community Services (407) 665-2300
Economic Development (407) 665-7135
Environmental Services (407) 665-2000
Fiscal Services (407) 665-7176
Human Resources (407) 665-7944
Information Technology Services..... (407) 665-0311
Leisure Services (407) 665-2001
Library Services (407) 665-1505
Planning & Development (407) 665-7432
Public Safety (407) 665-5000
Public Works..... (407) 665-5601

ADDITIONAL NUMBERS

Affordable Housing (407) 665-2300
Animal Services (407) 665-5110
Auto/Boat/Tag/Title/Registration (407) 665-1000
Bid Information (407) 665-7116
Budget Office..... (407) 665-7176
Building Inspections (407) 665-7050
Building Permits (407) 665-7050
Clerk of the Circuit Court (407) 665-4330
Code Enforcement..... (407) 665-6650
Community Assistance (407) 665-2300
Drivers Licenses (407) 327-4760
EMS/Fire/Rescue (407) 665-5175
Environmental Health (407) 665-3604
Extension Service (407) 665-5551
Garbage Collection/Recycling (407) 665-2260
Health Department Clinic, Casselberry (407) 665-3400
Health Department Clinic, Sanford (407) 665-3000
Homestead Exemptions (407) 665-7508
Job Hotline (24-Hour)..... (407) 665-7816
Juvenile Diversion Services..... (407) 665-5360
Land Records (407) 665-4409
Libraries..... (407) 665-1505
Museum of Seminole County History (407) 665-2489
Occupational Licenses (407) 665-1000
Parks Information (407) 665-2001
Probation..... (407) 665-4602
Property Appraiser (407) 665-7506
Prosecution Alternatives for Youth (P.A.Y.) (407) 665-5360
Purchasing (407) 665-7116
Road and Storm Drainage (407) 665-ROAD
School Board (407) 320-0000
Seminole Government Television..... (407) 665-SGTV
Sheriff's Office (407) 665-6600
Solid Waste Customer Service..... (407) 665-2260
State Attorney (407) 665-6000
Street Lighting (407) 665-7164
Supervisor of Elections..... (407) 708-7700
Tax Collector (407) 665-1000
Tourism Development (407) 665-2900
Traffic Fines (407) 665-4323
Veterans' Services (407) 665-2300
Water & Sewer Billing (407) 665-2110
Zoning..... (407) 665-7444