



SEMINOLE COUNTY
FLORIDA'S NATURAL CHOICE

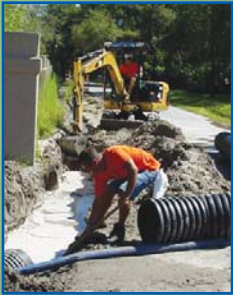


VALUE • EXCELLENCE • COMMITMENT



COUNTY MANAGER'S
ANNUAL REPORT

2005



COUNTY DEPARTMENTS SERVING OUR COMMUNITY:

Administrative Services ♦ Community Services ♦ Community Information

County Attorney ♦ County Manager ♦ Economic Development

Environmental Services ♦ Fiscal Services ♦ Human Resources

Information Technologies ♦ Library and Leisure Services

Planning and Development ♦ Public Safety ♦ Public Works

Tourism Development

VALUE, EXCELLENCE, COMMITMENT

These are words that describe Seminole County's approach to serving our community. Take a look at our accomplishments over the past year and discover why Seminole County is uniquely the "Natural Choice" to live, learn, work and play.

General Hutchison
Parkway in
Seminole County

The Board of County Commissioners Dedicated to Serving the Community

SEMINOLE
value



The Board of County Commissioners represent citizens in five commission districts that are elected at-large. Serving four-year, staggered terms, the Board is Seminole County's legislative branch in which individual Commissioners serve as both legislative officers and fiscal representatives of the County.

The Board meets regularly at the Seminole County Services Building, 1101 East First Street in Sanford on the second and fourth Tuesday of each month. In addition, the Board may meet in scheduled work sessions to discuss matters of general importance; however, no official action is taken during these sessions.

Minutes are recorded of all Commission meetings, work sessions and public hearings and made a part of the record in the County Commission Records Office. All meetings are also televised live on

Seminole Government Television (SGTV) and shown on cable channel 9. These meetings are replayed at 11 p.m. on the Sunday following the meeting. Archived video of the Commission meetings, agendas and minutes are available online at www.seminolecountyfl.gov.

The Board of County Commissioners also serve as your ambassadors or liaisons to many local, regional and state boards and committees. These boards and committees cover a wide gamut of important matters that affect Seminole County residents and businesses including: the economy, transportation, regional and local planning, the environment, tourism, juvenile issues and the arts. The Board of County Commissioners are actively engaged in working for the good of the community.

COUNTY MANAGER'S OFFICE



To the Citizens of Seminole County:

Value, Excellence and Commitment. These key attributes reflect Seminole County Government's accomplishments in 2005, which I am extremely pleased to present to you in this annual report.

Our pledge to improve the quality of life is reflected in major infrastructure investments, being a business-friendly government, sustaining our environment and creating partnerships. Important achievements this year included: the completion of important road segments along Dodd Road and County Road 427, enhanced recreation by adding links to our trail system, the creation of over 25,000 new private-sector jobs and 14 new companies to service our residents, visitors and businesses.

Seminole County continues to benefit from the economic prosperity that is prevalent in our community. An on-going strong business focus contributes to the financial stability that our government continues to enjoy. Thanks to a fiscally conservative approach, the County has been able to maintain the same low County-wide property tax millage rates for the eighth year in a row.

While we are a premier county, many challenges remain: transportation, affordable housing and redevelopment. With a committed County Commission and a dedicated workforce, there is every reason to believe that Seminole County's future will continue to be one of prosperity.

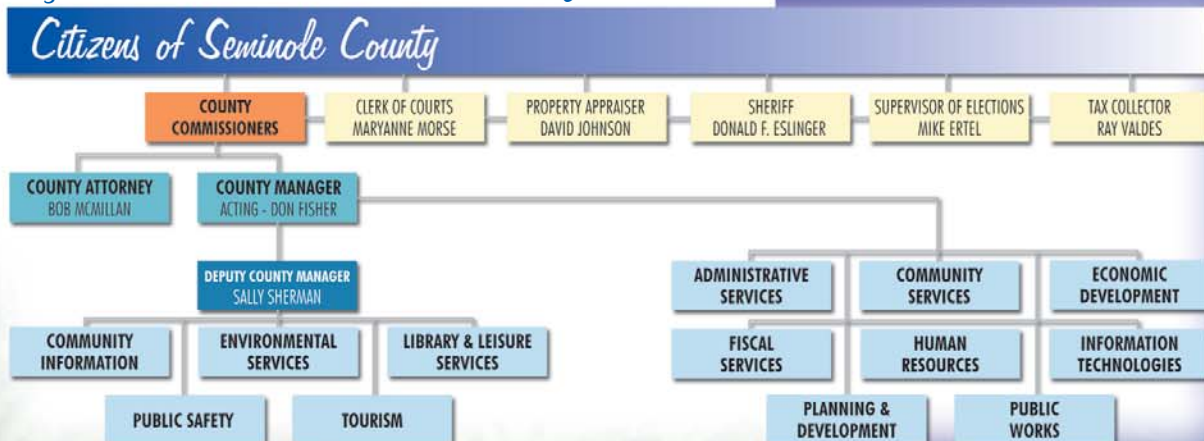
I hope you enjoy reading the 2005 Annual Report. It reflects the innovative ways we provide value, strive for excellence and maintain our commitment to making Seminole County your "natural choice" to live, learn, work and play.

Sincerely,

Donald S. Fisher,
Acting County Manager



Organizational Chart of Seminole County Government



Getting Involved in your Government

SEMINOLE
value



Seminole County government belongs to its citizens. With this fact in mind, the County continually strives to expand its citizens' knowledge of and involvement in the County's programs and functions.

Watch or Participate in the Public Meetings

One means by which Seminole County residents can increase their understanding of government is through public meetings such as: the Board of County Commissioners meetings, Joint City/County Advisory Committee meetings, Code Enforcement Board meetings, Planning and Zoning Board meetings and the Board of Adjustment meetings. Many of these meetings are broadcast on Seminole Government Television.

Watch SGTV

Seminole Government Television (SGTV), the County's 24-hour cable channel, presents another gateway into the government and its activities. Cablecast on channel 9, programming includes live meetings; community events; Seminole InSIGHT, a monthly magazine show featuring informational stories about the County or its residents; the Video Bulletin Board, which broadcasts community announcements; job postings and state and federal government shows.

Visit us on the Web

For those who have access to the Internet, Seminole County's Web site, www.seminolecountyfl.gov, offers a variety of online services. With the technology of streaming audio, SGTV is able to broadcast live programming, such as the County Commission meeting. A variety of documents, such as employment applications and cable franchising complaint forms, can be located and submitted online. An archive of the Board of County Commissioners meetings is available as well.

Join our Citizens' Academy

Citizens also have the opportunity to take a more structured approach to community involvement. Seminole County's Citizens' Academy is a free 13-week interactive program designed to familiarize the general public with the roles, services and operations involved in County government. The program focuses on educating residents and business owners on how daily County government operations contribute to building a better community. Elected officials, department administrators and other County staff host the classes. These seminars orient citizens to the County's 13 departments and the County's key officials. The program began in 2004 and has produced 70 graduates thus far.

Use our Speakers' Bureau

The Community Information Department's Speakers' Bureau provides a more focused and intimate interaction with government. Through this program, Seminole County provides representatives to address civic group meetings, private clubs, community organizations and schools. These speakers are available to address such topics as healthy living, money matters, water safety and veterans' benefits.

Volunteer Opportunities in your Community

Seminole County offers several volunteer opportunities in the community. Diverse programs such as the Fire Department Explorer Post, the Natural Lands Program, Teen Court, the Watershed Action Volunteer Program and 4-H afford citizens the opportunity to pursue their interests while giving back.

Understanding the County's Services

Thirteen departments work together to provide essential services. Below is a summary of the functions of each department.

Administrative Services keeps the County running through operational and administrative support. Divisions include property management, the copy center, facilities maintenance and construction, fleet maintenance and risk management.

By helping citizens obtain support, guidance and healthcare, **Community Services** affords individuals the path to a higher quality of life. Community Assistance, Prosecution Alternatives for Youth (P.A.Y.), the Health Department and Veterans' Services are part of this department.

Community Information serves as a central office for citizen and media inquiries. Public Relations, SGTV and the County's graphics design group facilitate communication to residents.

Economic Development promotes thriving business. This Department is responsible for Business assistance and the administration of the U.S. Highway 17-92 Community Redevelopment Area.

Providing the services you rely on, **Environmental Services** is comprised of Planning, Engineering and Inspections, Water Conservation, Solid Waste, Water and Wastewater.

Dedicated to spending tax payers' money wisely, **Fiscal Services** oversees all financial-related activities under the Board of County Commissioners. Divisions within this Department include Budget, Purchasing and the Municipal Services Benefit Unit (MSBU).

Human Resources recruits, trains, promotes wellness and handles labor relations for the County. The Department strives to provide competitive pay and a more diverse work force.

Information Technologies keeps the County connected through networking and server management, web development, cellular and satellite services and countywide switchboard operations.

Quality recreation, education and information services are the responsibility of **Library and Leisure Services**. Divisions include the Cooperative Extension Service, Historical Museum, Library Services and Parks & Recreation.

Planning and Development manages construction, zoning functions and the Natural Lands Program. Divisions include Building, Community Resources, Development Review and Planning & Zoning.

Public Safety maintains and ensures the welfare of the citizens through Administration, Animal Services, Emergency Communications, Fire Rescue and Emergency Management.

Committed to making your commute easier, **Public Works** serves citizens through Engineering, Roads-Stormwater, Traffic Engineering and Trails.

Tourism Development promotes the County to the state, nation and international communities. Its primary goal is to increase business, relocation and tourism in the area.

Seminole Highlights



Guide to Services and Main Office Locations



County Services Building
1101 East First Street
Sanford

Location for: County Administration, Community Information, Economic Development, Fiscal Services, Human Resources, Information Technologies, Planning & Development, County Attorney, Property Appraiser and Tax Collector



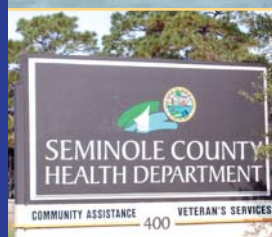
Five Points Operations Center
Northwest corner of County Home Road and US 17-92
Sanford

Location for: Administrative Services, Traffic Engineering, Animal Services, Museum, Roads - Stormwater and Cooperative Extension



Reflections Plaza Complex
Northwest corner of Lake Mary Boulevard & Hidden Lake Drive
Sanford

Location for: Environmental Services, Public Works and County Attorney



Health Department
400 W. Airport Boulevard
Sanford

Location for: Community Services and Health Department



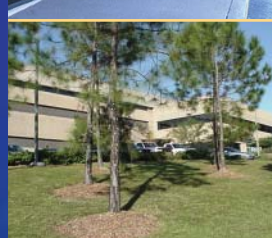
Sheriff's Office & Dept. of Public Safety
150 Bush Boulevard
Sanford

Location for: Public Safety and Sheriff's Office



Convention & Visitor's Bureau
1230 Douglas Avenue,
Suite 116
Longwood

Location for: Tourism Development



Environmental Services Central Transfer Station
1950 State Road 419
Longwood

Location for: Solid Waste Management and Recycling

Building Value through Plans and Services that Enhance the Community

SEMINOLE
value



Seminole County's Planning and Development Department continues to concentrate on managing growth, improving the quality of life for citizens of Seminole County and looking to the future to improve the Department's diverse work programs and processes in order to build a better community.

ONE-ON-ONE ASSISTANCE

One of the unique features of the Planning and Development Department is its Customer Resource Center. In addition to providing one-on-one assistance, the Center provides Internet access and training on how to locate property information. The hurricanes of 2004 created an ongoing opportunity for the Customer Resource Center to assist citizens in rehabilitating their homes damaged by the storms. Seminole County was the first to receive \$2.1 million to provide assistance for demolitions, home repairs and replacement housing as well as interest-free and deferred-payment loans to income-eligible citizens.

This year the Building and Fire Prevention Division went above and beyond in providing excellent and timely customer service in issuing a staggering 25,700 permits, up 32 percent from 2004. Inspections increased from 76,000 in 2004 to more than 100,000 in 2005. A strategic shift of zoning review responsibilities and flood prone determinations resulted in a more efficient review time.

BUILDING VALUE THROUGH GRANTS

One major way Planning and Development has been building value is through its Community Grant Assistance. The Community Development Office provides grant funding assistance to the citizens of Seminole County through a variety of funding opportunities. A few of these are the State Housing Initiative

Partnership (SHIP), the Community Development Block Grant (CDBG) and the Home Investment Partnership (HOME).

- Combined HOME and SHIP funds of \$515,000 provided for the acquisition, demolition and construction of transitional rental housing for the clients of the Lisa Merlin House, a non-profit organization for women recovering from alcoholism and substance abuse.
- The HOME and SHIP grants allotted \$2 million combined with the Florida Department of Children and Families Grant funds of \$800,000 to provide for the acquisition and construction of a group home that will serve as transitional rental housing for the Seminole County Victims Rights Coalition.
- CDBG and SHIP funds of \$900,000 were designed to assist the Girl's and Boy's Town of Florida with the construction of a group home for the County's homeless children.
- Over 400 homeowners were assisted with Declared Disaster Recovery Home Repair Grants totaling \$886,479.
- Down Payment Assistance Programs assisted 74 families with a total of \$2.1 million and new construction of five home loans for special needs families, totaling \$755,582.
- CDBG funding of \$1 million was used for the Seminole County Public Schools Midway Safe Harbor Project, which involved the construction of a 12,500 square foot community building.

PLANNING FOR THE FUTURE

Seminole County is also building value by planning for the future by embarking on two important assessments, the Charter Review and the Evaluation & Appraisal Report that started in 2005 and are vital to the future direction of Seminole County.



Seminole County's Home Rule Charter is under review. The current charter enables governmental decisions to be made locally and not by the State. The Charter must be reviewed every six years by an appointed Charter Review Commission consisting of 15 county citizens. The review will include issues such as County Manager and County Commission responsibilities, commission districts and terms and the provision for the recall of elected officials. The committee is required to conduct the review, which began in October 2005 and will conclude in May 2006. During this time period, public hearings will be held. At the conclusion of the review, the committee will deliver any proposed changes to the County Commission. These changes would then be placed on the November 7, 2006 general election ballot. For more details, visit www.seminolecountyfl.gov.

"Vision 2020: A Guide to the Journey Ahead," which serves as the Comprehensive Plan for the County, is the second most important review initiative. The review, or the Evaluation and Appraisal Report (EAR), kicked off in 2005 looking at issues such as neighborhood protection, libraries, affordable housing, drainage and water supply. The final results will be used to formulate recommendations on deficiencies or needed amendments to the comprehensive plan. Information on public input meetings and the process can be accessed at the following address: www.seminolecountyfl.gov/pd/planning/activities_ear.asp on the County's Web site.

Planning Regionally

Seminole County sees the **value** in participating in regional planning. Below are two organizations that have a significant role in our future:

METROPLAN

METROPLAN ORLANDO is the metropolitan planning organization (MPO) for Orange, Osceola and Seminole Counties. In 2005, METROPLAN ORLANDO and LYNX both agreed to move forward with the North/South Commuter Rail Corridor Project, recognizing the continuing rate of growth in the Orlando Urban Area.

The commuter rail project is designed to connect Central Floridians from home to work in a faster, less congested and more relaxed style. A proposed commuter rail alignment is currently being developed. The route would follow the existing CSX railroad tracks beginning in DeLand, crossing I-4 to Sanford, then continuing with stops in Longwood, Altamonte Springs and Winter Park, paralleling I-4 through Orlando and then terminating in Kissimmee.

MYREGION.ORG

Myregion.org is a regional development program designed to bring together the business, government and institutional leadership representing seven counties in Central Florida to develop plans to ensure Central Florida's success in the 21st century global marketplace. The focus and priorities of the organization are quality of life in the area, education, economic leadership, growth, protection of the environment and regional unity. The group is currently undertaking projects such as the Central Florida Values Study, Naturally Central Florida: Fitting the Pieces Together, 2005 Central Florida Regional Indicators Report and PennDesign Central Florida.

Bringing Value to our Community by Being a Good Neighbor

SEMINOLE
value



Seminole County knows a chain is only as strong as its weakest link and accepts its responsibility to look out for the welfare of every resident. As a result, the County maintains programs that preserve the well-being of its citizens. Community Services is largely charged with this significant task.

A SAFETY NET FOR CITIZENS

A division of Community Services, Community Assistance is a safety net to at-risk neighbors by providing them with case management services during crisis to help achieve self-sufficiency. Community Assistance responded to about 12,000 calls from individuals and families striving to overcome obstacles in their journey towards a brighter and better life. Approximately 1,500 families received financial assistance to cover rent, utilities, childcare and minor medical emergencies brought on by such obstacles as job loss, loss of the family's primary wage earner and unexpected medical expenses that threatened their self-sufficiency. Case managers seek to empower rather than enable those in need, promoting a greater sense of hope, self-esteem and community.

Community Assistance is a vital link to services at other agencies through the Community Partnership Grant Program. Nearly 22,000 residents received assistance with: after school programs, behavioral health prevention and intervention, vision impairment, meals, adoptions, child abuse intervention and other services essential to a healthy family and community. The Division also oversees Medicaid for over 8,000 residents each year in hospital and nursing home environments.

SERVICES FOR VETERANS

Veterans' Services, incorporated into Community Assistance,

continues its strong effort to ensure eligible veterans secure the maximum benefits for themselves and their families. Over 20,000 claims were filed as a result of approximately 14,000 appointments, phone calls and outreach visits to nursing homes and veteran organizations.

PAYING BACK SOCIETY

Committed to maintaining the boundaries of the law, Probation supervises more than 5,000 offenders and focuses on affecting positive behavior. In concert with the Sheriff's Office, Probation electronically monitors offenders using Geographic Information Systems technology as they attempt to reintegrate back into society. Those who fail to adhere to the guidelines face the consequence of reincarceration. The Probation Division will continue in its unyielding approach to successful offender management, putting the goal of a safer County, with fewer crimes and fewer victims, at the pivotal point of its work.

HELPING YOUTH GET BACK ON TRACK

Seminole County's Prosecution Alternatives for Youth (P.A.Y.) consists of Teen Court, the Juvenile Alternative Services Program (J.A.S.P.) and the Community Arbitration Program (C.A.P), which exist as alternatives to formal court proceedings for delinquent juveniles. P.A.Y. promotes accountability to the victim and the community through restitution and community service work, encouraging neighborly values among the program's participants. In Fiscal Year (FY) 2004/2005, P.A.Y.:

- Served 1,100 clients and their families, with an 87 percent success rate and a recidivism rate of only 10 percent after one year
- Retained more than 150 adult and youth volunteers as arbitrators and Teen Court participants.



HELPING ABUSED & NEGLECTED CHILDREN

Committed to protecting abused and neglected children, the Guardian ad Litem (GAL) Program has been hard at work recruiting and training volunteers. In 2005, GAL certified 50 new caring adults who, along with 13 dedicated staff members, provided best interest representation to 1,015 abused Seminole County children. Community Information partnered with GAL and produced an information program to enhance GAL's recruitment capabilities. Future goals of the GAL Program include ensuring every abused child has a Guardian ad Litem volunteer who will make certain that their voice, no matter how small, is heard.

KEEPING NEIGHBORHOODS HEALTHY

Pursuing its mission to promote and protect the health and safety of our community, Seminole County Health Department (SCHD) continues to expand and diversify its services. In a synergistic approach, SCHD actively seeks partnerships with area agencies, local hospitals and health care providers to assess local needs and efficiently allocate available health resources. Through these valuable partnerships and the Department's dedicated staff members, SCHD provided well over 700,000 services throughout our community.

Seminole Gardens Outreach Center increases access to quality health care for women and infants, breast-feeding support groups and Hepatitis education groups. SCHD also participates in statewide health initiatives, such as the Get Healthy Florida flu immunization campaign, where 7,000 people were immunized, and Step Up Florida, an event that encourages physical activity.

Keeping Neighborhoods Healthy

Services Provided by Seminole County Health Department Programs*

Program & Type	1/1/05 - 10/1/05
TOTAL SERVICES PROVIDED	761,207
Women, Infant & Children Nutrition	54,280
Family Planning Services	8,361
School Health Preventive Services	506,325
Sewage Disposal Services	4,550
Sexually Transmitted Disease Program	9,337
Prenatal Care Services	8,269
Healthy Start Prenatal Services	51,356
Indigent Care Delivery Services	486**
Adult Immunization Services	7,198
Childhood Immunization Services	20,017
Tuberculosis Control Services	10,486
Dental Health Services	18,875



* Data obtained from the Department of Health, Office of Planning Evaluation and Data Analysis (HPE). Source: HMCRS Data System Report GH321L1.

**Raw data obtained from internal SCHD reports.

Building Value with a Strong Economy and Education

SEMINOLE
value



The County's Economic Development Department experienced an excellent year in business development activities.

BOOMING BUSINESS DEVELOPMENT

Fourteen companies, including Accredited Home Lenders, Allegiant Air, Axiom, Compak, Electronic Fasteners, Inc., Guarantee Insurance, HOTUSA-KEYTEL, Lenders First Choice, Media 1 Graphix, Project Test, Sears Home Improvement Products and Stromberg, expanded or located operations in this county. Two of the 14 businesses, Remington College and Pneu-Tech Aerospace, relocated headquarters to the area. Together these business actions added 2,560 new or retained jobs, with an average wage of \$43,802, significantly higher than the regional average. Ultimately an impressive \$59.5 million in new construction and equipment was brought to Seminole County. The 14 projects absorbed over 350,000 square feet of vacant space in the Seminole County commercial marketplace.

U.S. 17-92 REDEVELOPMENT

The redevelopment of U.S. Highway 17-92 continues to be an important part of Seminole County's economic development. Through the 17-92 Community Redevelopment Agency (CRA), a program funded through the US 17-92 Redevelopment Trust Fund, taxable property values have risen an average of over 8.5 percent per year or from \$239 million to over \$400 million.

The U.S. 17-92 Redevelopment Planning Agency (RPA), an advisory committee of the 17-92 CRA, is directing the update. The update will continue to focus on opportunities to work with private redevelopment interests in targeting and revitalizing

under-performing sections of the corridor, designing and constructing public infrastructure improvements, including regional facilities, and coordinating with the State in advancing and enhancing programmed road improvement projects, such as the planned U.S. 17-92 Flyover.

The roadway design for the State's Urban Reconstruct Project, from Lake of the Woods Boulevard to the Orange County line, was completed. Curb and gutter and centralized water and sewer lines, a multi-use trail facility, signalized pedestrian crosswalks and enhanced landscaping were also added as part of the redesign. Seminole County will oversee construction and will be reimbursed the estimated cost of \$8 million in FY 08/09. Construction is set to begin mid 2006 and is anticipated to be completed by the end of 2007.

TOURISM ADDS TO OUR ECONOMY

Seminole County continues to become the natural choice for many tourists and events, which proves to be valuable to our economy:

- In FY 04/05, Seminole County Tourism achieved its highest bed tax collection in its history, with \$2.6 million in revenues.
- Occupancy for FY 04/05 increased 31 percent over the previous year, along with a corresponding increase in average daily room rates. Visitors to the area also added to Seminole County's economy with increases in sales, gas and ad valorem taxes.
- The Central Florida Zoo, Sanford Memorial Stadium and Merrill Park Stadium remain beneficiaries of Tourism Development with a combined budget of \$360,000.
- Tourism also funded 16 community and sports events, including the Scottish-American Highland Games and Independent Softball Association (ISA) Softball Tournaments with \$125,000



in marketing funds.

- Revenues collected from bed and sales taxes for sports events alone brought in more than \$57,000 and an approximate economic impact of \$105 million for the area.

These events created an economic impact of over \$11 million for Seminole County.

EXCELLING IN EDUCATION

A valuable workforce starts with a strong education system, and Seminole County's school system is one of the best in the nation. Seminole County Public Schools consists of 78 schools, which provide educational services to 64,853 students. The schools have been recognized nationally for excellence.

- MONEY magazine identified Seminole County Schools as one of the top 100 districts in the nation offering high quality education in a moderately priced community.
- NEWSWEEK recognized all Seminole County High Schools in the top 3 percent in the nation.
- Seminole County Public Schools was selected for the American School Board Journal's Magna Award, recognizing districts across the country for outstanding programs that advance student learning and encourage community involvement.
- Since 1977, Seminole County SAT scores have exceeded state and national averages.

Seminole County is also home to Seminole Community College (SCC), a fully accredited, state-supported, two-year college. In October 2005, SCC broke ground for its new "Center for Economic Development" at Heathrow. The Center, located off AAA Drive, is scheduled to span 65,000 square feet and open in 2007. Created to meet the demands of the Central Florida workforce, the facility will offer relevant programming for the community.

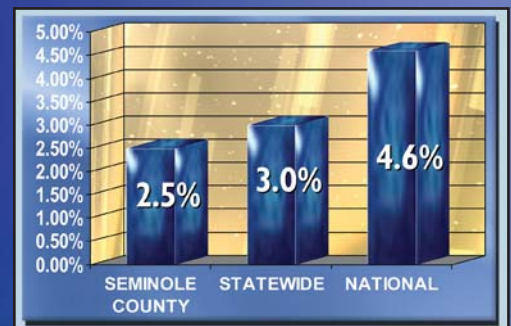
Employment Facts

OUR MAJOR EMPLOYERS

Seminole County Public Schools	9,145
Convergys Corporation	1,700
Bank One	1,500
Florida Hospital - Altamonte Springs	1,500
Seminole County Government	1,446
Seminole Community College	1,386
Sprint PCS	1,200
Fiserv Inc.	1,100
Central Florida Regional Hospital	900
American Automobile Association	867
Orlando Regional South - Seminole	811
Symantec	800
Florida Extruders International Inc.	800
TI Group Automotive Systems	630
Priority Healthcare Corporation	546
HTE	500

Source: Nexis.com, Feb. 2005 & Direct Company Contact, 2005

OUR UNEMPLOYMENT RATE



Rates as of December 2005

Maintaining Community Value with our Unique Qualities

SEMIN
value



Much of Seminole County's uniqueness stems from its historical value. The County's museums and parks play a major role in preserving this uniqueness, therefore enabling us to share our treasures with the world.

VALUING OUR HISTORICAL TREASURES

Through the Museum of Seminole County History, the Seminole County Historical Commission is involved in an ongoing program to place historical markers in notable locations throughout the County. Forty-five markers have been placed since the program's inception, and many more are planned for the future. Markers dedicated in 2005 include "Bookertown" in Sanford, "Steamboats" in downtown Sanford on the Riverwalk and "Lady Liberty" at Big Tree Park.

Big Tree Park is located on the beautifully shaded General Hutchison Parkway between U.S. 17-92 and State Road (SR) 427 north of Longwood. Major renovations occurred this year, and the park was chosen as a site to celebrate National County Government Week. A tribute to Seminole County's Heroes, the event centered on the dedication of "Lady Liberty." A contest was held in conjunction with Seminole County Public Schools to name the tree. All elementary schools participated, and the winning students from Geneva Elementary School, along with their entire class, were on hand to formally dedicate the companion tree to "The Senator." "The Senator" is the park's main attraction, a 3,500 year old Bald Cypress, one of the largest in the world.

A NATURAL DESTINATION CHOICE

Seminole County continues to become the natural destination choice for many tourists. Fundamental to their arrival is the Orlando Sanford International Airport (OSIA), which continues to

impart a great contribution with its increasing domestic and international traffic. As the third fastest-growing airport in North America, OSIA has broken a lot of records this year, and an increasing number of visitors are utilizing this venue. OSIA welcomed Allegiant Airlines, Icelandair and flyglobalspan, which will begin scheduled direct flights to Europe in 2006.

CONSERVING OUR RESOURCES

Seminole County has an important duty to maintain a clean, safe environment and conserve the area's natural resources. As a result, the Department of Environmental Services has taken measures to be proactive in its approach to water conservation. The following attest to this commitment:

- In 2005 the County placed restrictions on water usage.
- A total of 3,311 reminders were mailed to Seminole County citizens to urge mindfulness of water consumption.
- Official notice was given that the Regional St. John's Water Management District (SJRWMD) staff members planned to recommend Seminole County Water Supply - Yankee Lake Reclaimed Water Augmentation Regional Surface Water for inclusion in the 2005 District Water Supply Plan (DWSP).
- Yankee Lake will undergo re-rating of its capacity starting in January 2006.

After a year of working with the SJRWMD and County Staff, the Water Conservation Garden became a reality and was installed at the Environmental Center off of SR 419 near the Central Transfer Station. The garden will provide a focal point for the thousands of students who go to the Center to learn about nature and water conservation through landscaping techniques. The garden also

SEMINOLE COUNTY

excellence commitment

Seminole Highlights



received a Certificate of Achievement from the National Wildlife Federation (NWF). This certificate confirmed it as a National Wildlife Federation Backyard Habitat Site, placing it among a prestigious group of NWF members recognized for protecting and nurturing nature.

The Natural Lands Program

Seminole County has one of the best land preservation and education programs in Central Florida, adding value to our community by preserving our natural features.

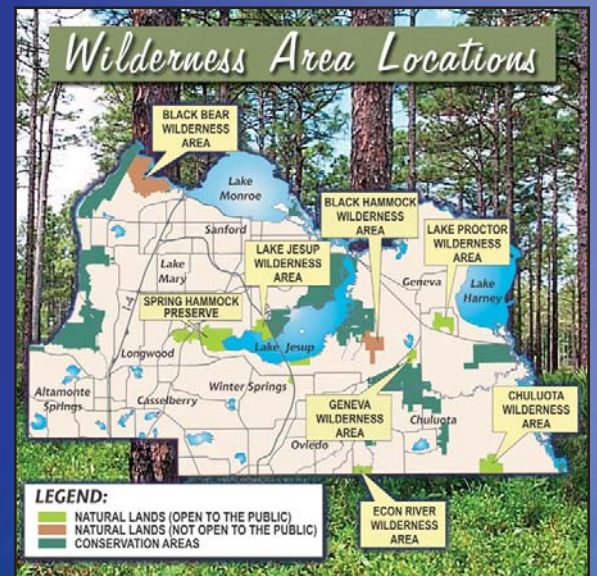
Number of acres preserved	approx. 7,000
Future acquisition acres planned	112
Wilderness Areas open to the public	5
Passive Area (Spring Hammock Preserve)	1
Nature Center (at Geneva Wilderness Area)	1

Community Outreach and Education Programs reach thousands of citizens and range from open house events, guided hikes, school programs, air potato raids and community classes at the Nature Center.



CONSERVING OUR LAND FOR THE FUTURE

Protecting the environment and enjoying nature was a priority for many citizens this year. Over 3,500 students and citizens joined staff and volunteers in taking advantage of the Natural Lands Program. The Natural Lands Program continued its commitment to the environment by conducting prescribed burns at the Econ River, Chuluota and Geneva Wilderness Areas. The reintroduction of this important natural process is vital to the overall health of our ecosystems and actually helps to preserve the areas unique bio-diversity.



Maintaining Excellence in Keeping the Public Safe and Secure

SEMINOLE
value



Public Safety is committed to maintaining excellence in safety and security that Seminole County citizens deserve.

READY TO RESPOND TO ANY EMERGENCY

One of the most vital functions of the Public Safety Department is its emergency response. This includes fire and rescue emergencies, Emergency Management Services (EMS) response, patient transport, hazardous materials response, WMD preparedness and air medical operations. During FY 04/05, 17,581 calls were made that required Rescue & EMS services, 718 calls were made regarding fires and 653 were made in respect to hazardous conditions.

Committed to providing more coverage and training in response to these emergency situations, plans are underway for three fire stations and a "burn building."

- Station 13, currently located at 1240 SR 436, will be relocated farther west, just east of Bear Lake Road.
- Station 19, a new station, is planned in the Greenwood Lakes/Crossing area.
- Station 29, also new, will be constructed in the 426/417 area.
- Seminole County reached an agreement with SCC for the construction of a "burn building" to be located at the training site on Valentine Way. SCC is currently working on the building's design and is anticipating the selection of a builder in late spring of 2006.

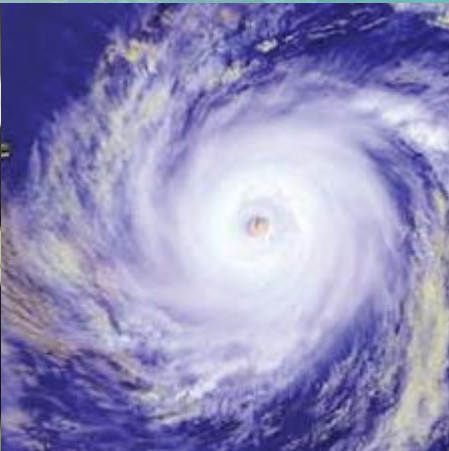
Approximately 460,000 U.S. deaths occur each year as a result of cardiac arrest, making sudden cardiac arrest the leading cause of death in the U.S. To reduce this number, EMS successfully imple-

mented the Seminole County Community AED (Automated External Defibrillator) Responder Enhancement (C.A.R.E.) program. Through this program, 47 AEDs, machines used to restore the heartbeat, were purchased and placed throughout the County to improve accessibility to help, therefore, increasing the likelihood of survival among victims of cardiac arrest. This initiative resulted in the participation of other communities and agencies, such as the City of Altamonte Springs, Seminole County Schools and the Seminole County Sheriff's Office. An online AED registration form was created in conjunction with this program, resulting in 70 registrations in four months.

Through a State Shelter Retrofit Grant, hurricane wind protection was completed on two public school shelters: Winter Springs High and Bentley Elementary, which is the County's second Special Needs Shelter. The wind protection consisted of roll down shutters on the windows and windscreen on the doors. The grant funding for the wind protection enabled Seminole County to increase the population capacity of these two shelters. Emergency Management also established agreements with 17 local businesses to serve as sites for distribution of disaster supplies, such as food, ice and water. If an emergency situation arises, these sites will be activated, and the public will be notified of their locations.

KEEPING KIDS SAFE

The EMS/Fire/Rescue Division serves as the lead agency for the Safe Kids Seminole County Coalition. The Safe Kids Coalition is a National Organization with the primary mission of reducing preventable injuries to children from birth to age 14. Seminole County's focus areas include Child Passenger Safety,



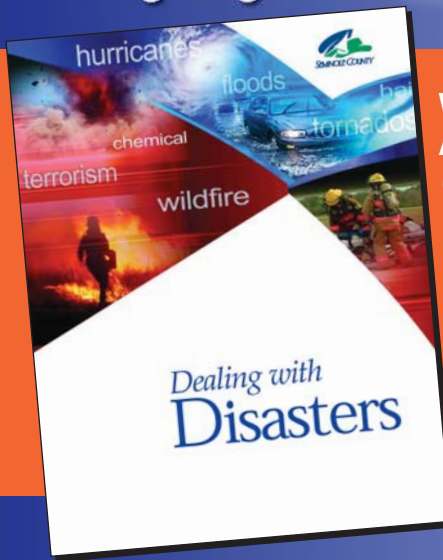
Bike/Helmet Safety, Fire Safety and Drowning Prevention. The program received \$35,900 in grant funding, \$25,000 of which was part of a fire safety grant used to purchase and install smoke alarms throughout the County. The four primary partnering agencies are Seminole County, Lake Mary, Oviedo and Sanford Fire Departments. Additional funding was also received for Child Passenger Safety and Bike Safety Education.

PROTECTING PETS

Not only is Seminole County concerned with the safety of its citizens, it is also concerned with the well-being of its animals. The Board of County Commissioners approved the outsourcing of the pet license program and the company that will manage it. This will benefit Seminole County citizens in two ways. One, Seminole County will be enabled to enforce pet licensing, which will protect the public against rabies since vaccination is a requirement of licensing. Second, pet owners who have been separated from their pet(s) will have increased chances of being reunited because more pets will be registered.

Animal Services held the second annual Adopt-a-thon and the "Home for the Holidays" events. Through these efforts, a total of 289 animal adoptions took place over a two-month period. In addition to these special events, Animal Services initiated the "Pet Pals Program." This program offers pets for adoption to Seminole County's senior and disabled residents. The County also incorporated advanced technology in its operation by microchipping all adopted animals. Finally, in an effort to achieve the County's ultimate goal of keeping the public safe and secure, Animal Services added a directory of dangerous dogs residing in Seminole County to the County Web site.

Seminole Highlights



WE SENT OUT A HANDY GUIDE TO PREPARE CITIZENS.

"Dealing with Disasters" was mailed out to all residents and businesses in Seminole County.

This guide contains information about:

- Important Telephone Numbers and Web sites
- How to Prepare for a Disaster
- Shelter Map & Locations
- Preparing a Plan for Your Family
- Planning for Pets
- Safety and Security Guidelines
- Department of Homeland Security Recommendations
- Seminole Community Volunteer Program

Staying Informed

Citizens can obtain specific Seminole County information through a variety of ways in the event of an emergency:

- Seminole Government Television (SGTV) on cable Channel 9
- WUCF (89.9) FM at the top of every hour
- The Seminole County Web site: www.seminolecountyfl.gov
- The Citizens' Information Line, (CIL) (407) 665-0311. CIL operators provide information on evacuation procedures, shelter, water, food, and ice locations, as well as a variety of other information. The CIL operates around the clock during disaster operations.

If you did not receive a copy of Seminole County's "Dealing with Disasters," it is available on the Web at <http://www.seminolecountyfl.gov/guide/hurricane.asp> or at the County Services Building located at 1101 East 1st Street, Sanford. For further questions, call (407) 665-0311.

Excellence in Keeping the County Moving

SEMINOLE
value



It is the responsibility of the Department of Public Works to keep Seminole County moving. With 812.54 miles of roads and 354 traffic signals, this department has no small task.

MAKING OUR ROADS SAFER

Traffic Engineering is on a mission to convert existing hanging signals to signals attached to mast arms at a rate of four to five per year. Mast arm signals not only increase the aesthetic value of the County's roadways but also provide superior strength and stability during severe weather.

In an effort to inform citizens of issues affecting their travel, Traffic Engineering continues to expand its Advanced Traffic Management System. There are now 27 permanent message signs strategically located throughout the County displaying real-time construction, incident, evacuation route, travel time and Amber Alert information for motorists.

KEEPING DRAINAGE SYSTEMS FLOWING

Continuing to repair the County's waterways and drainage systems damaged by Hurricanes Charley, Frances and Jeanne, several projects were completed in 2005. A number of canals and streams were severely impacted by storm debris that restricted flow and/or substantially eroded the drainage channels, threatening homes, commercial properties and public infrastructure. Bridges and traffic signals also needed restoration. With the help of the Board of County Commissioners and the County's departments, the U.S. Department of Agriculture/Natural Resources Conservation Service Emergency Watershed Protection Program, the Florida Department of Transportation under the Emergency Relief Program funded by

the Federal Highway Administration and FEMA all supplied funding. This funding was also used to make repairs such as rebuilding the Orange Avenue Bridge, replacing 1,978 traffic signs, repairing sidewalks at 99 locations, removing debris from nine drainage channels and regrouting the Howell Creek Dam.

NEW ROADS IMPROVE TRAFFIC FLOW

Pivotal to community development is the improvement and expansion of roadways to support area growth. The final phase of East Lake Mary Blvd. began in spring 2005 and is scheduled to be completed in the summer of 2006. It will extend from Brisson Avenue to SR 46 at SR 415. The \$16 million project will provide a new route for motorists by providing a direct link of SR 415 at SR 46 with Ronald Reagan Blvd. (County Road 427), SR 417, US 17-92 and I-4.

The Engineering Division is currently in the final design stages of improvements at the busy intersection of Red Bug Lake and Tuskawilla Roads. The proposed improvements will add an additional travel lane in the eastbound and westbound directions on Red Bug Lake Road. Design plans for the project are complete, and construction will begin in 2006.

BIKE, WALK OR SKATE AROUND THE COUNTY

Seminole County's trails provide a scenic, safe and convenient location for bicycle, pedestrian, in-line skate and equestrian travel. With trail usage increasing and roadway traffic volumes growing, there is a great demand to keep pace. Additions to the County's trail system during 2005 included:

- The completion of two sections of the Cross Seminole Trail- from the Orange County line at Aloma Avenue and Howell

SEMINOLE COUNTY

excellence commitment

Seminole Highlights



Branch Road to Mikler Road near Oviedo and from Gardena Avenue in Winter Springs to Layer Elementary School. More than 12 miles in length, the trail now includes a pedestrian overpass across SR 434 in Winter Springs.

- The Seminole Wekiva Trail added a new feature, the Markham Trailhead.
- The County's first neighborhood trail, Kewanee Trail in Fern Park, was also completed.
- Construction of the northern section of the Flagler Trail, featuring a rustic trailhead near the banks of Lake Harney, was completed. The southern section of the Flagler Trail was enhanced by a bridge spanning the Econlockhatchee River, creating a safe river crossing. The completed sections of the Flagler Trail now span 12 miles.

Lynx - Another Way to Get Around the County

THE LYNX BUS SYSTEM

Seminole County believes in alternate and more efficient transportation for our citizens and actively supports LYNX. Originally founded in May 1972 as the Orange-Seminole-Osceola Transportation Authority, the agency has been doing business as "LYNX" since 1992.



Serving Orange, Seminole and Osceola Counties - an area of approximately 2,500 square miles with a resident population of more than 1.8 million, LYNX operates nine bus routes in Seminole County, four running entirely within the County and three connecting the County to Orange and Osceola. Two of these routes were added in the past year - a route down Lake Mary Blvd. toward I-4 and an Orlando-Sanford International Airport/Midway route - both starting at the Wal-Mart SuperCenter on US 17-92.

LYNX also operates ACCESS LYNX Paratransit Service under the Americans with Disabilities Act (ADA). ACCESS LYNX is a shared ride paratransit, door-to-door transportation van service. The program is for eligible individuals who aren't able to use the regular bus service (also called "fixed route") because of a disability. Currently, the program provides more than 3,100 scheduled passenger trips per day throughout the three counties, using a variety of vehicles specially equipped for individuals with various disabilities.



Recognizing Excellence, an Award Winning Government

SEMINOLE
value



Over the past year, the County's departments, divisions and employees have been honored with an assortment of awards and recognitions. Each award is reflective of the value that the County places on the services it provides the community. Seminole County congratulates its award-winning staff and commends their commitment to excellence.

Fiscal Services

- 2005 Achievement of Excellence in Procurement Award, Purchasing and Contracts Division, National Purchasing Institute, Inc.
- 2005 Award for Excellence in Public Procurement, Purchasing and Contracts Division, Florida Association of Public Purchasing Officers
- 2005 Best Practice Award, Florida Association of Public Purchasing Officers
- Government Finance Officers Association, Budget Division, Distinguished Budget Presentation Award

Public Works

- Florida Safety Council's Gold Star for Safety Award, Traffic Engineering-Robin Butler

Planning and Development

- Grateful Taxpayer & Best County Award (Mr. & Mrs. Bob Cope)
- Recognition of Participation in the Affordable Housing Fair, Florida Housing Corporation
- Recognition of Participation, Florida Community Development Association
- Seminole County Public Schools Outstanding Public Speaker Awards-Jim Duby and Amy Raub

Library and Leisure Services

- 4-H Literacy Award for curriculum-Shelda Wilkens
- Central Florida Food Safety Education Partnership Award-Rita Law McCumber, Consumer Science Agent
- State and National Continued Excellence Award in Extension-Barbara Hughes

Community Information

- Silver Circle of Excellence for County Manager's Annual Report
- Florida Government Communications Association for County Manager's Annual Report, Third Place

Human Resources

- Central Florida's Top 100 Companies for Working Families

Public Safety

- Explorer Firematics Team Competition, First Place overall and two Fifth Place overall
- Mock DUI Member of the Year-Lt. John Rogers
- Women of the Year Award, Magic 107.7 - Chief Leeanna Raw
- Heroes Award, Latin Gospel Core - United We Stand-Battalion Chief Steve Thiebauth and Firefighter Mike Lloyd

SEMINOLE COUNTY

excellence commitment

Seminole Highlights



Information Technologies

- Digital Counties Survey's Top 10 Award, Fifth Place Web site
- E-Government Award, Most Innovative Proposal to Advance an E-government Web site

Administrative Services

- Seminole County Community College, Plaque of Appreciation for the Seminole County Internship Program

Community Services

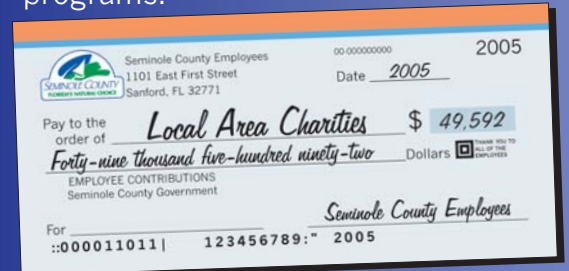
- Association of Fundraising Professionals, Outstanding Local Government Award for Philanthropic Efforts

Environmental Services

- Rotary Club of Seminole County South, Vocational Service, David Gregory

County Employees Give Back to the Community

Seminole County employees give back to the community by participating in food drives, volunteer programs and County sponsored charitable giving programs.



OUR CHARITIES

America's Charities	\$8,702
American Red Cross	\$5,387
Heart of Florida United Way	\$9,020
Hospice of the Comforter	\$26,483
Total	\$49,592

PASS CHRISTIAN RELIEF

Seminole County and its employees have been involved with Katrina relief efforts in Mississippi. Seminole County officially adopted the city of Pass Christian. In conjunction with other cities in Seminole County, County employees have contributed food, supplies, and toys to help rebuild what was destroyed by the hurricane.



Excellence through Responsible Fiscal Management

SEMINOLE
value



Intelligent financial management is essential to the success of an organization. It is Seminole County's mission to provide responsible administration of the community's monetary resources and its economic future. The Department of Fiscal Services is tasked with this very important function.

With the change in federal and state policies toward local government and the rapid rate of growth in our area, Seminole County must ensure that it is capable of adequately funding and providing local government services needed by the community now and in the future. The County's annual budget for FY 05/06 is \$780.9 million. The total budget reflects balances brought forward to fund ongoing capital projects, as well as restricted balances set aside for future capital needs. The County's base operating budget is approximately \$420 million. The County has maintained the same low countywide property tax rate of 4.9989 mills for the past eight years, enabled through a combination of continued strength in the County's economy and property tax base, as well as the County's on-going fiscal conservatism.

Continuing to excel at saving the County and, ultimately, the taxpayer money, the Purchasing and Contracts Division provides award-winning centralized procurement support. Reaccredited in 2005 by the National Institute of Governmental Purchasing, this Division has been instrumental in producing a cost savings to the County of approximately \$20 million in FY 04/05 as a result of competitive procurement processes.

Also a part of Fiscal Services, the Municipal Service Benefit Unit (MSBU) Program offers a number of opportunities for property owners in unincorporated areas of Seminole County. The program assists eligible communities with improvement projects that meet the criteria of essential public health, safety or welfare improvements. Funding for the MSBU improvements is provided through special assessments that are assigned to the properties receiving the benefits of the improvements. In 2005 the MSBU Program was available to support the Oak Park property owners in their efforts to replace an existing subdivision wall that was destroyed during the 2004 hurricanes.

Property Tax on a Home with a Taxable Value of \$175,000 in Seminole County

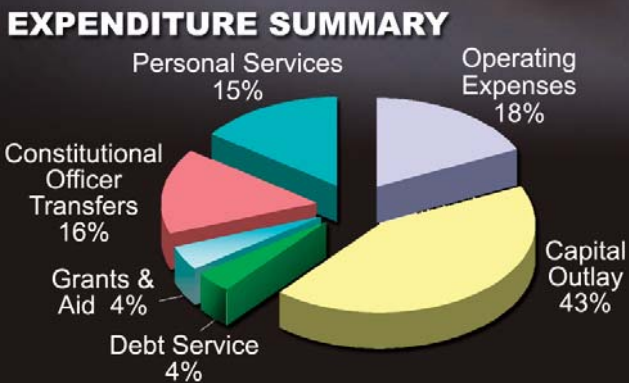
This graphic shows what an average homeowner pays in ad valorem taxes on a home in unincorporated Seminole County valued at \$175,000, less a \$25,000 Homestead Exemption.





Your Seminole County Dollars at Work

\$780.9 Million Budget for Fiscal Year 05/06



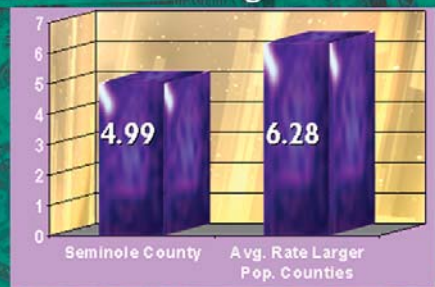
Fiscal Facts

Seminole County has demonstrated fiscal *excellence* in several ways. The charts below compare us to similar counties in Florida. In 2004 Seminole County's millage (property tax) rate was the 10th lowest in the State of Florida.

Seminole County has also received high bond ratings:

- Moody's Investor Service Rating of AA2
- Standard and Poors rating AA

Tax Millage Rate



Debt Per Capita



Commitment to our Community through Partnerships and Opportunities

SEMINOLE
value



Seminole County is committed to fostering partnerships and seeking opportunities that will improve the lives of its citizens. This past year, the County entered into or continued ventures in the interest of philanthropy, education, fiscal savings, community development and political interest.

HELPING OTHER COMMUNITIES

One of the most rewarding ongoing partnerships Seminole County experienced this past year was with Pass Christian, Mississippi, a city that lost 80 percent of its homes and 100 percent of its businesses as a result of Hurricane Katrina. The County, along with the Seminole County School Board, the seven cities, the Chamber of Commerce and area churches and business groups adopted the devastated city. For the holidays, members of the partnership donated toys, toiletries, bedding, luggage and food. Assistance continued when Seminole County donated 10 surplus vehicles, including dump trucks.

PARTNERING WITH EDUCATION

In 2005 Seminole County partnered with several educational institutions. The Museum of Seminole County History and the Seminole County School Board joined to form the History Seekers Program. Through this program, middle and high school students are able to embark on a fantastic journey back in time, via activities within their classrooms, the Museum's Web site and tours of the building. All students participate in this program as part of Social Studies curriculum.

In addition the SCI.Net (Seminole County Integrated Network) project, a partnership effort with the University of Central Florida's College of Engineering and Computer Science and

College of Health and Public Affairs, is well underway to provide on-line property information and simplify the permitting process and other functions within the County.

The Cooperative Extension Service with the University of Florida provides another educational collaboration. The Extension Service offers citizens the opportunity to become more involved in their communities with programs such as:

- 4-H youth education program, which provides children and young adults with the opportunity to learn life skills they need to be productive and self-reliant members of society
- The Urban Horticulture Program which promotes environmentally sound horticulture practices
- The Master Gardener Program that trains volunteers to assist residents with information on horticultural problems.

PARTNERING WITH THE COMMUNITY

Another major partnership is the Joint City/County Advisory Committee. Hosted by the Board of County Commissioners, the task of this committee is to increase communication between the County and its cities to more effectively utilize resources, ultimately saving taxpayers' money. Members of this partnership include Seminole County, the seven Cities, Seminole Community College and Seminole County Public Schools and Chambers of Commerce. Some topics of discussion include cable franchising, sex-offender registration, parks and recreation, garbage collection, mosquito control, fire services and stormwater. The committee recognizes that these services impact all residents, and as a result, seeks ways to provide quality services by forming collaborations to create win-win situations for the



taxpayers. Cooperation between the County and Cities is not new. It should be recognized that some collaborative efforts currently taking place between governmental entities include:

- Sewer and water services
- Vehicle fueling
- Road improvement projects
- Emergency response
- Trail development
- Planning for development of communities
- Animal services
- Economic development
- Traffic signal maintenance

The Joint City/County Advisory committee provides the forum necessary to look at improving on-going services while remaining fiscally conservative.

Seminole County will continue in its mission to be an outstanding philanthropic government. In 2005 the County supported fantastic organizations such as Habitat for Humanity, which seeks to eliminate poverty housing and homelessness; Hospice of the Comforter, which provides sensitivity and support for people in the final phase of an advanced illness and KidsHouse, an organization for abused children that offers treatment and support in a positive environment.

Community Facts

OUR CITIES

Altamonte Springs, Casselberry, Lake Mary, Longwood, Oviedo, Sanford and Winter Springs

OUR STATISTICS

Founded in 1913
Land Area (square miles): 344
Total Registered Voters: 236,636 as of 1/06

OUR DEMOGRAPHICS

POPULATION

Total Population: 411,744 as of 04/05 BEBR
Total Households: 144,862
Population Density:
(per square mile) 1,155.80

AGE

Median Age: 37.9

HOUSING UNITS

Total Housing Units: 165,923
Owner Occupied: 107,020.33
Renter Occupied: 37,830.44

HOUSEHOLD INCOME

Average Household Income: \$73,209
Median Household Income: \$53,675

BUSINESS & EMPLOYMENT

Number of Employed Citizens: 149,810
Number of Establishments: 17,393

Our Commitment to a Better Future

SEMINOLE COUNTY

value excellence commitment



In 2006 Seminole County will maintain its commitment to Seminole County citizens by continuing to strive for excellence. Steadfast in that promise, Seminole County has considerable plans in the community's future:

Many major renovations, expansions and constructions are scheduled to take place in 2006.

- ◆ Administrative Services has begun the design phase for the John E. Polk Correctional Facility Expansion Project. With an estimated budget of \$30 million, this project will include the design and construction of a new multi-story jail to be located on the east side of the existing facility. The new structure will double the bed capacity of the correctional facility. This expansion project will also allow the correctional facility to be connected to the Criminal Justice Center via an elevated walkway, bridge or tunnel system. Other Administrative Services projects include the renovation of the Civil Courthouse and the Health Clinic in Casselberry.
- ◆ Community Service's Division of Veterans' Services will enhance services in the southern portion of the county in conjunction with the expansion of a satellite location in Casselberry by providing more opportunity for walk-in clients.
- ◆ As Community Services endeavors to fulfill the County's needs, it has engaged in a plan to increase the space in the Health Department's Casselberry offices in order to make more healthcare accessible to area residents and visitors.

Seminole County is committed to investing in the cultural education of our community.

- ◆ The Museum of Seminole County History was host to numerous traveling exhibits on loan from various organizations last year, such as "Centennial Faces" and "Florida Girls & Boys and their Toys." Additional exhibits are

planned for 2006 beginning with "Alligators: Dragons in Paradise."

- ◆ The County's "Art in Public Places" program featured area artists in gallery settings: the County Services Building, the Courthouses and the Juvenile Justice Building. Seminole County's goal is to enhance cultural resources by providing for and encouraging the exhibition of art in County buildings. This program will continue in 2006.

We are also committed to improving our services in 2006.

- ◆ As growth continues, Seminole County is committed to quality development. One way to ensure that we are meeting growth needs is by updating the County Land Development Code. This effort will create a more user-friendly Code, eliminating inconsistencies and will be included in the SCI.Net project, making it readily accessible electronically.
- ◆ Public Safety has plans to install mobile data terminal units in kennel trucks, a project to be coordinated with Information Technologies, and purchase supplies and equipment for a pet-friendly shelter.

ADDRESSING FUTURE CHALLENGES

Recognizing the challenges that remain: transportation, affordable housing and redevelopment, it is unmistakable that Seminole County staff and its Board of County Commissioners are committed to providing you with a better future. Seminole County strives to remain your "natural choice" to live, learn, work and play.



How to Reach Us by Phone or E-mail

**Seminole County
Government**
(407) 665-0311

www.seminolecountyfl.gov

**Clerk of the
Circuit Court**
(407) 665-4330

www.seminoleclerk.org

**Health
Department**
(407) 665-3000

www.seminolecountyfl.gov

**Office of Supervisor
of Elections**
(407) 665-7700

www.semcoelections.org

**Property
Appraiser**
(407) 665-7506

www.scpafl.org

**Sheriff's
Office**

(407) 665-6600

www.seminolesheriff.org

**Tax
Collector**

(407) 665-1000

www.seminoletax.org

FOR EMERGENCIES DIAL 9-1-1
General County Information Dial 407-665-0311

Important Phone Numbers to Reach our Services and Programs

Board of County Commissioners	407-665-7219	Drivers Licenses	407-327-4760
County Manager	407-665-7219	Emergency Operations Center	407-665-2650
County Attorney's Office	407-665-7254	EMS/Fire/Rescue	407-665-5175
COUNTY DEPARTMENTS		Environmental Health	407-665-3605
Administrative Services	407-665-5274	Garbage Collection/Recycling	407-665-2260
Community Information	407-665-1175	Health Clinic, Casselberry	407-665-3400
Community Services	407-665-3373	Health Department Clinic, Sanford	407-665-3000
Economic Development	407-665-7135	Historical Museum	407-665-2489
Environmental Services	407-665-2000	Homestead Exemptions	407-665-7508
Fiscal Services	407-665-7176	Job Hotline (24-Hour)	407-665-7816
Human Resources	407-665-7944	Juvenile (P.A.Y.)	407-665-5360
Information Technologies	407-665-1111	Land Records	407-665-4409
Library & Leisure Services	407-665-7490	Libraries	407-339-4000
Planning & Development	407-665-7432	Occupational Licenses	407-665-1000
Public Safety	407-665-5000	Parks Information	407-788-0405
Public Works	407-665-5601	Probation	407-665-4602
Tourist Development	407-665-2900	Property Appraiser's Office	407-665-7506
ADDITIONAL NUMBERS		Purchasing	407-665-7116
Affordable Housing	407-665-7384	Road and Storm Drainage Problems	407-665-ROAD
Animal Services	407-665-5110	School Board	407-320-0000
Auto/Boat/Tag/Title/Registration	407-665-1000	Seminole Government Television	407-665-SGTV
Bid Information	407-665-7116	Sheriff's Office	407-665-6600
Budget Office	407-665-7176	Solid Waste Customer Service	407-665-2260
Building Inspections	407-665-7067	State Attorney	407-665-6000
Building Permits	407-665-7050	Street Lighting	407-665-7164
Clerk of the Court	407-665-4330	Supervisor of Elections	407-665-7700
Code Enforcement	407-665-6650	Tax Collector	407-665-1000
Community Assistance	407-665-3270	Traffic Fines	407-665-4323
Cooperative Extension Service	407-665-5551	Water & Sewer Billing	407-665-2110
		Zoning	407-665-7444



SEMINOLE COUNTY GOVERNMENT
1101 EAST FIRST STREET
SANFORD, FL 32771
407-665-0311
WWW.SEMINOLECOUNTYFL.GOV