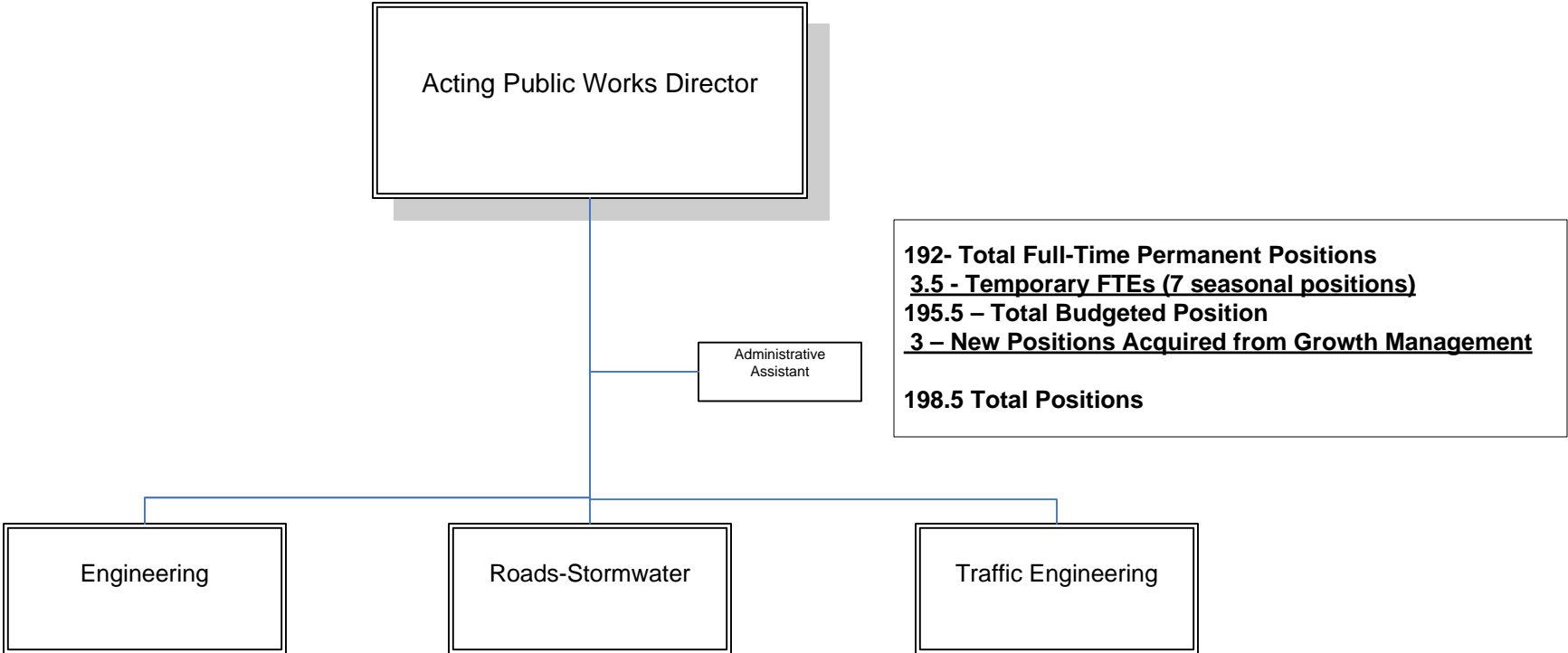


SEMINOLE COUNTY GOVERNMENT

DEPARTMENT OF PUBLIC WORKS

FY 10/11



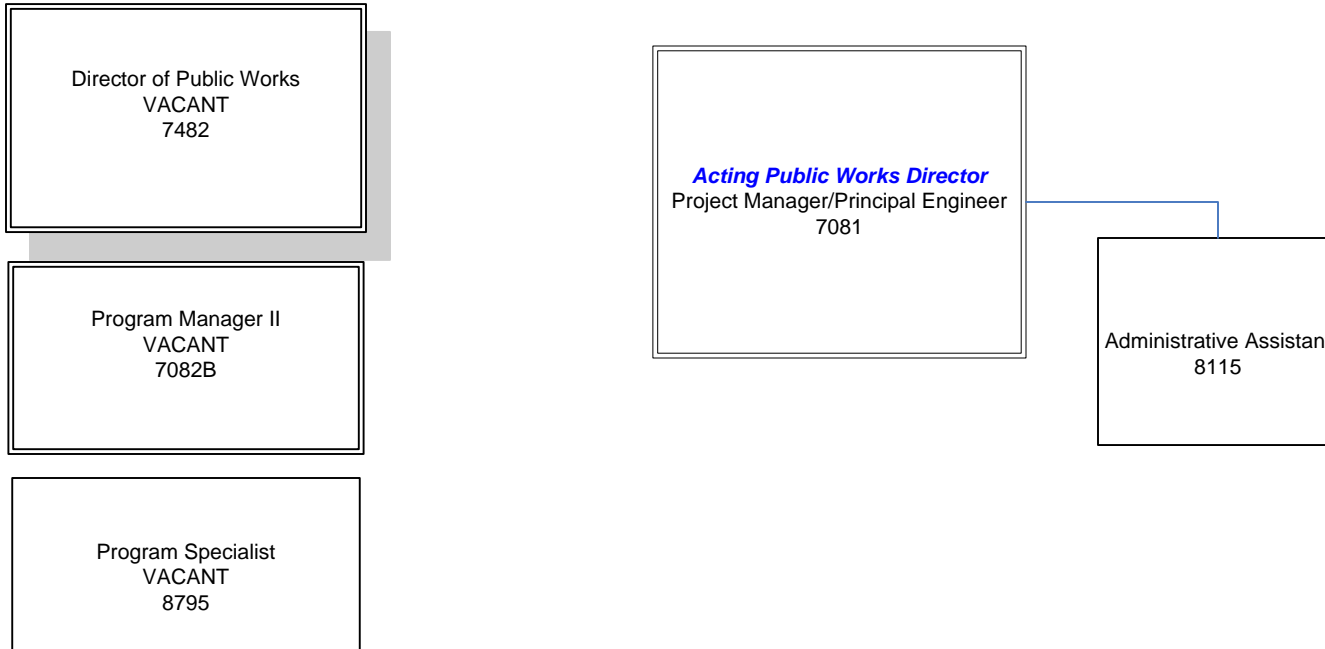
192- Total Full-Time Permanent Positions
3.5 - Temporary FTEs (7 seasonal positions)
195.5 – Total Budgeted Position
3 – New Positions Acquired from Growth Management
198.5 Total Positions

LEGEND
Italics Blue Font Titles = Function or Activity
VACANT = Current Vacant Positions

DEPARTMENT OF PUBLIC WORKS DIRECTOR'S OFFICE FY 10/11

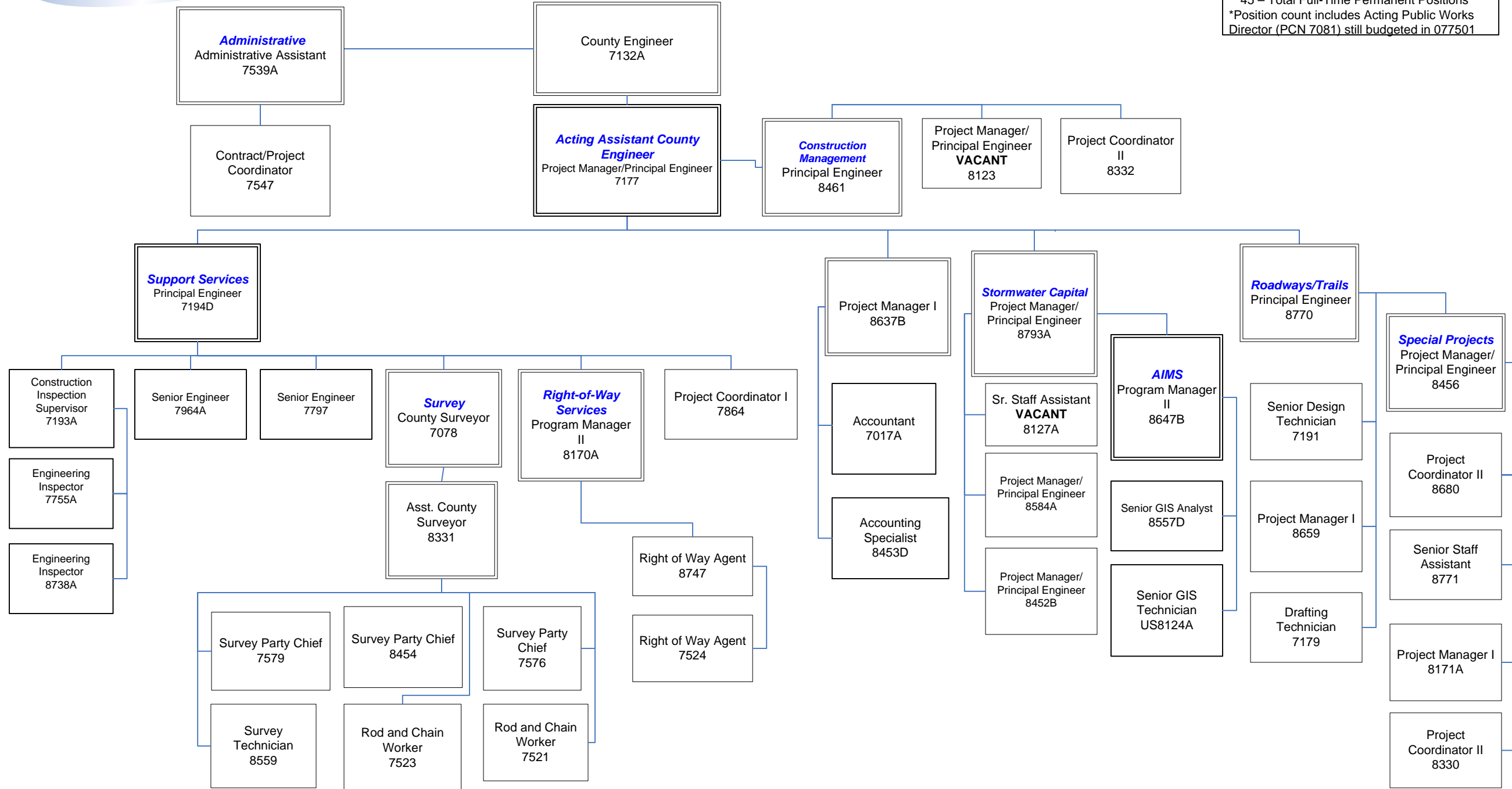
1 – Department Director
3 – Other Full-Time Permanent Positions
*4 – Total Full-Time Permanent Positions

*Position count **does not** include Acting Public Works Director (PCN 7081) still budgeted in 077501



DEPARTMENT OF PUBLIC WORKS ENGINEERING DIVISION FY 10/11

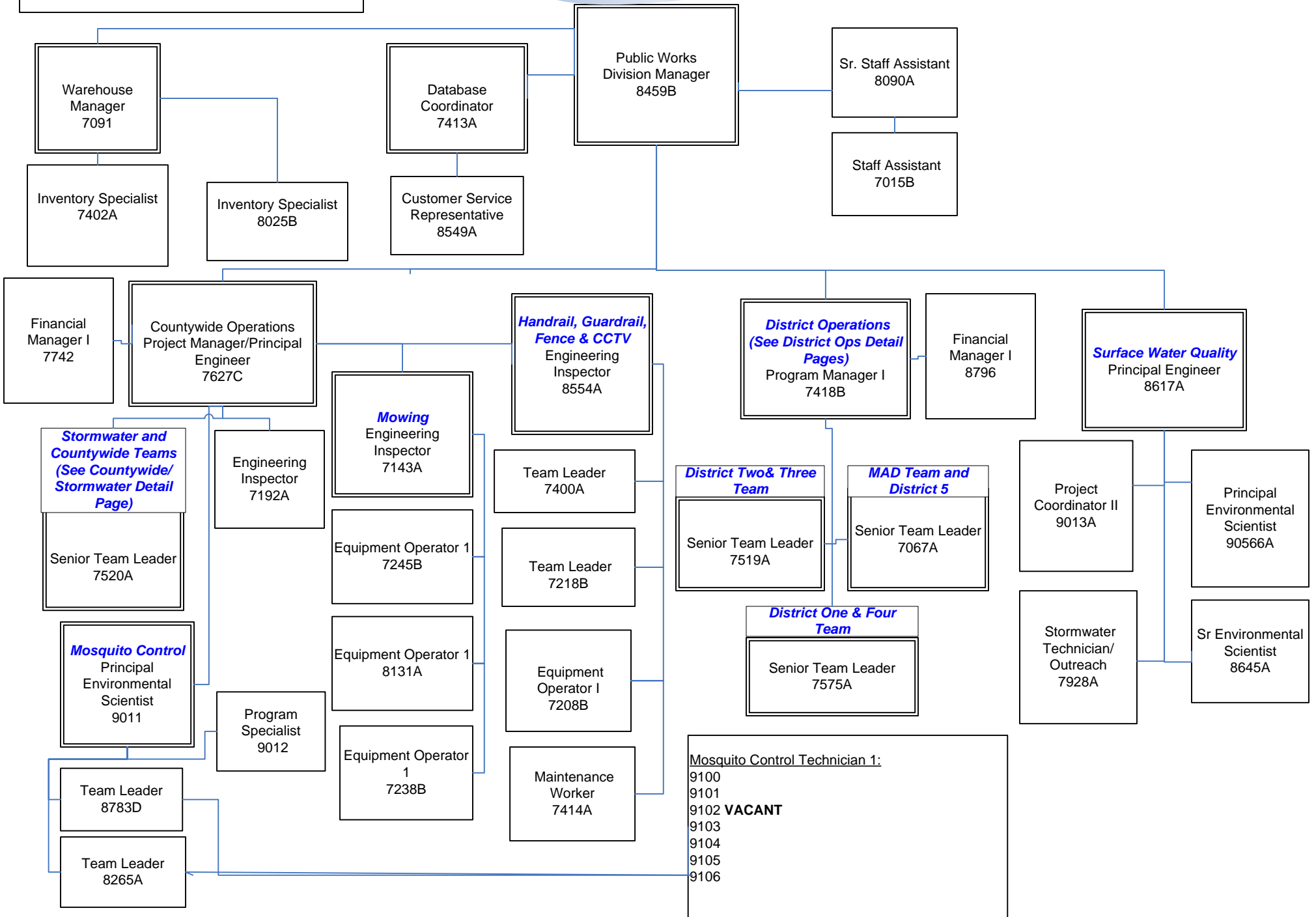
1 – County Engineer
 44 – Other Full-Time Permanent Positions
 *45 – Total Full-Time Permanent Positions
 *Position count includes Acting Public Works Director (PCN 7081) still budgeted in 077501



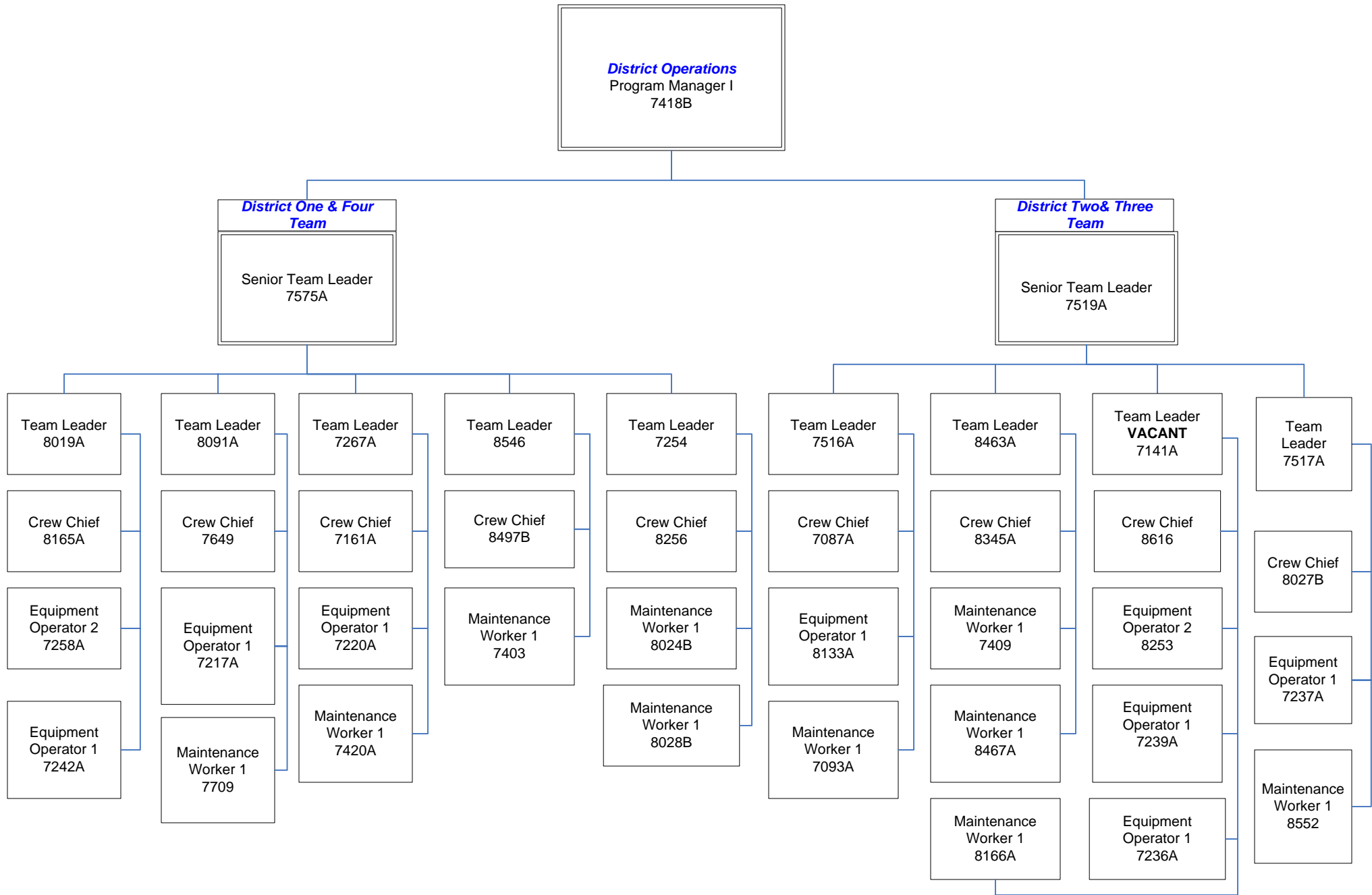
DEPARTMENT OF PUBLIC WORKS

ROADS-STORMWATER DIVISION FY 10/11

1 Division Manager
 111 Other Full-Time Permanent Positions
 3.5 Temporary FTEs (7 Seasonal Staff)
 115.5 Total FTEs



Roads-Stormwater District Operations FY 10/11



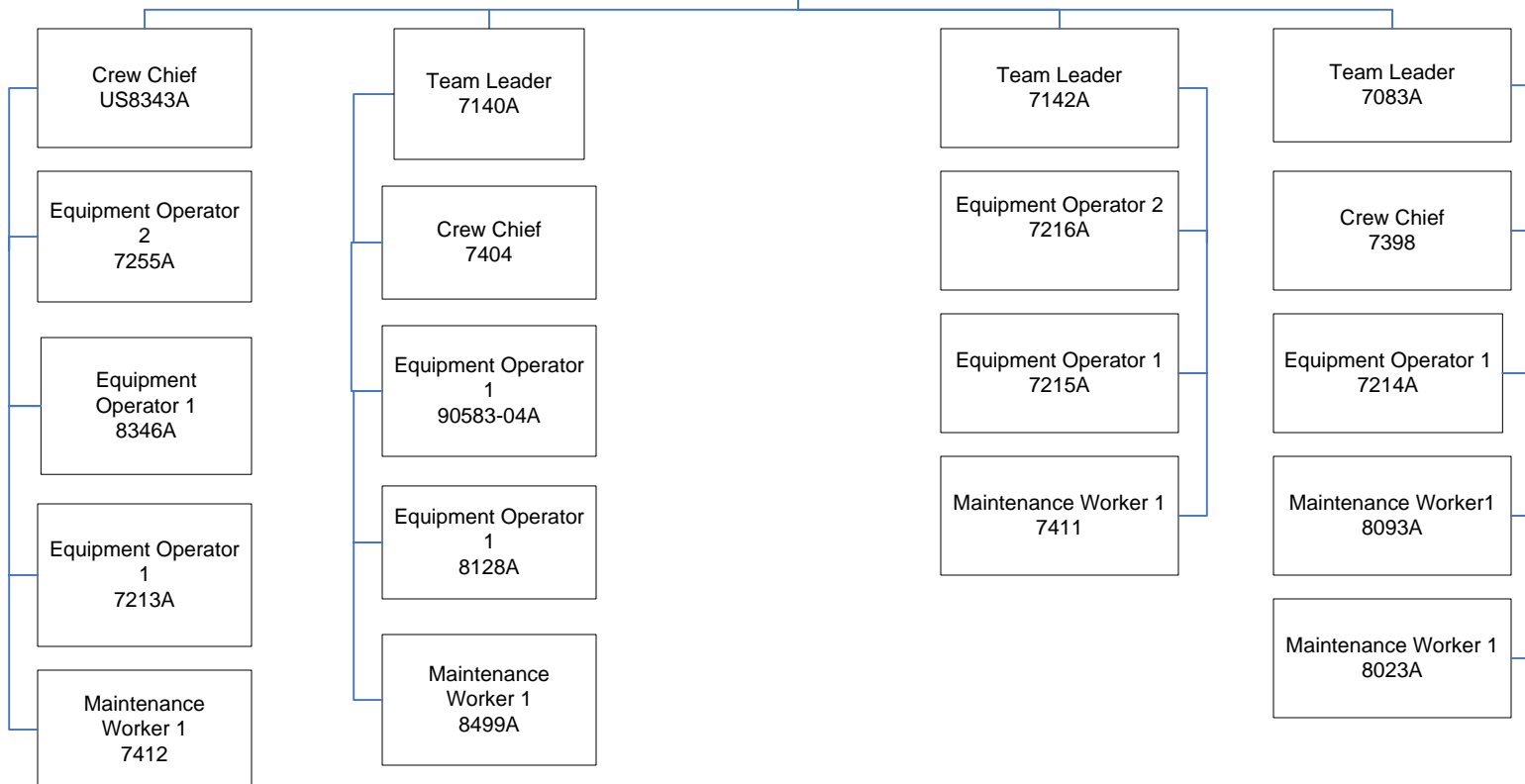
Roads-Stormwater District Operations FY 10/11

*MAD: Maintenance, Asphalt,
and Drainage

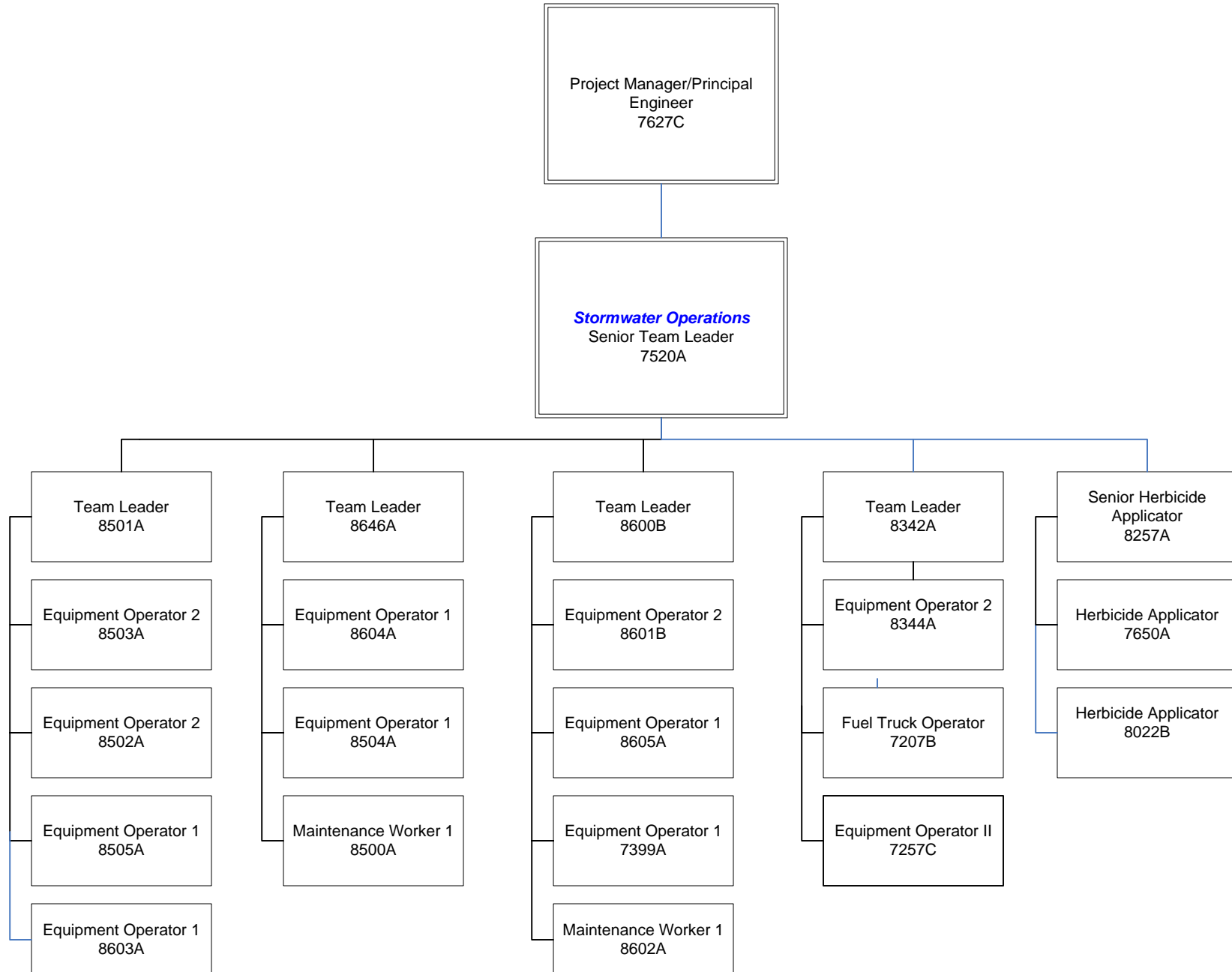
District Operations
Program Manager I
7418B

***MAD Team and District 5**

Senior Team Leader
7067A



Roads-Stormwater Countywide and Stormwater Operations FY 10/11



DEPARTMENT OF PUBLIC WORKS

TRAFFIC ENGINEERING DIVISION FY 10/11

1 – Traffic Engineer
 33 – Other Full-Time Permanent Positions
 34 – Total Full-Time Permanent Positions

Traffic Engineer
7591

* Project Manager II position moved to Public Safety mid FY 10 - 11. Included in position count for FY 10 – 11.

Signs/Markings & Safety Programs
 *Project Manager II
7590

