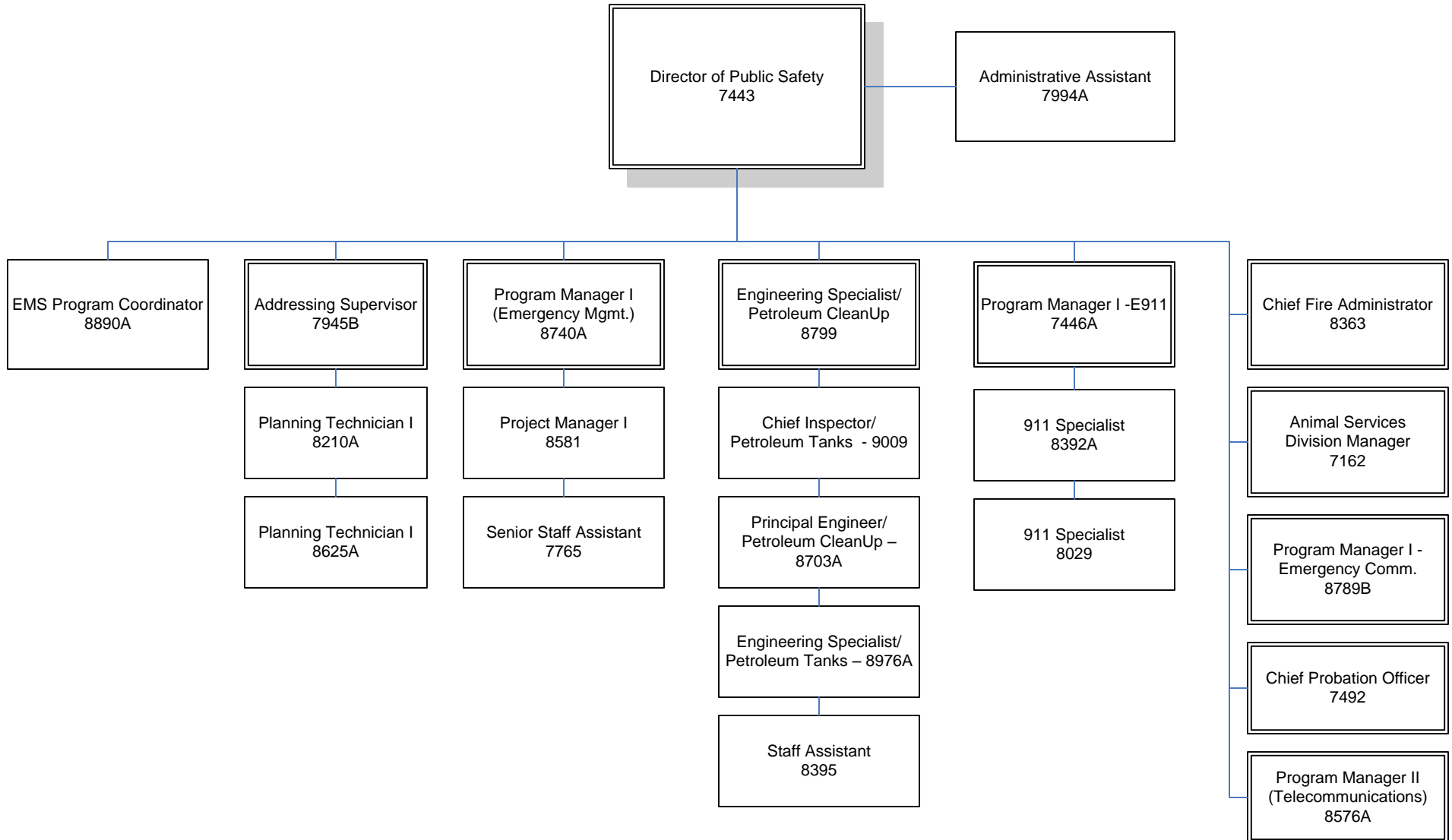
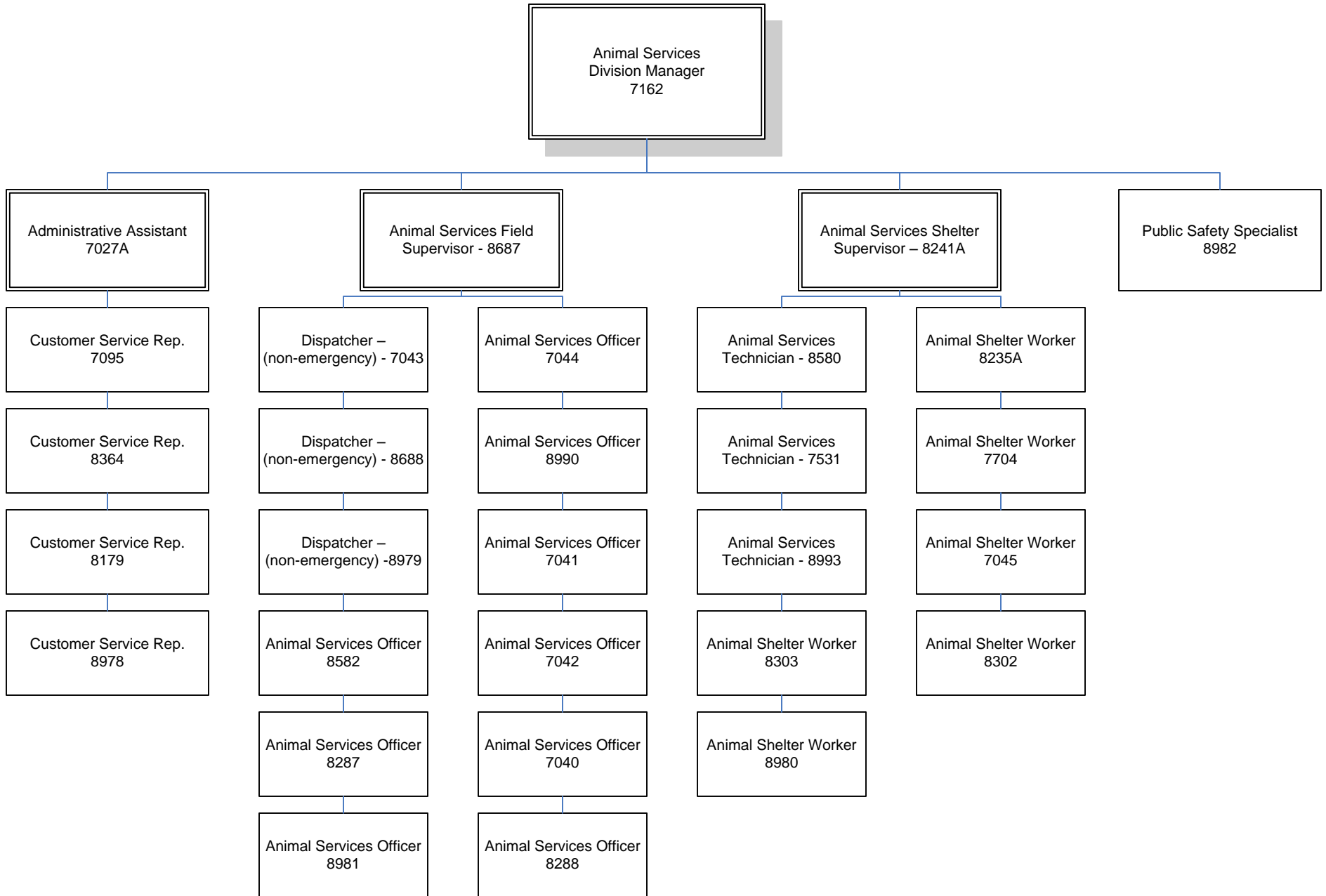


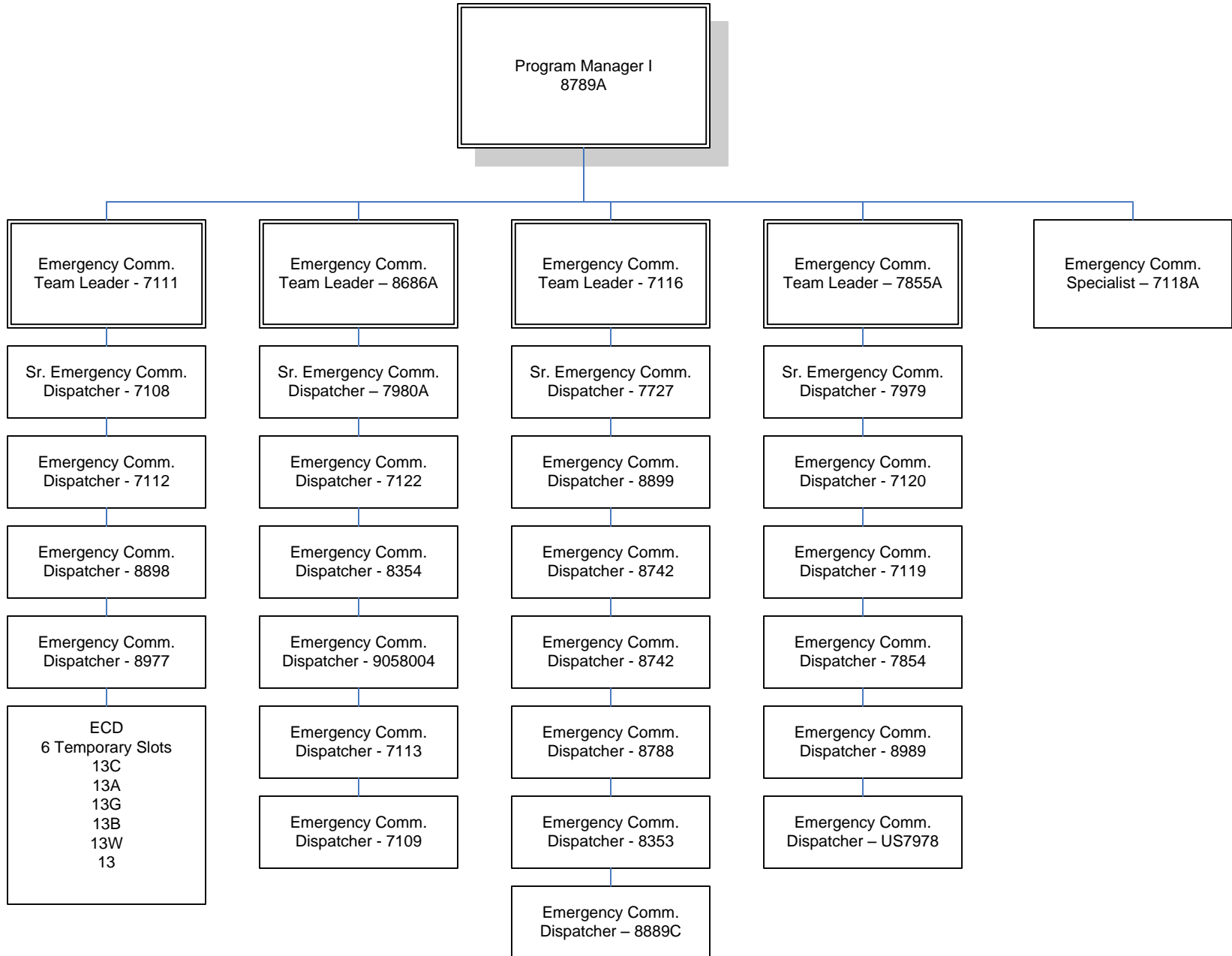
Seminole County/BCC  
**Public Safety Department**  
**Business Office**  
FY 2010-11



Seminole County/BCC  
**Public Safety Department**  
**Animal Services Division**  
 FY 2010-11



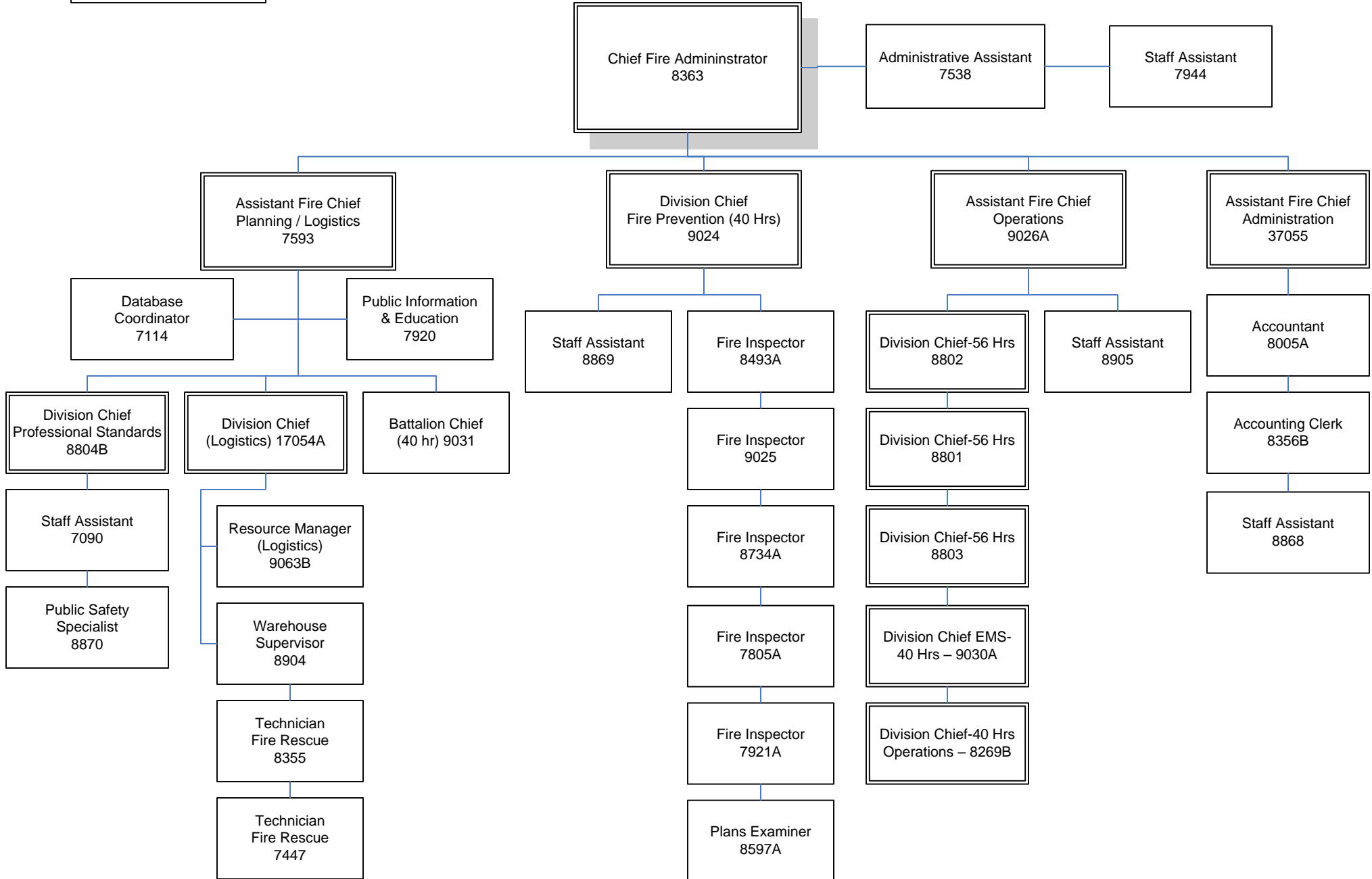
Seminole County/BCC  
**Public Safety Department**  
**Emergency Communications**  
 FY 2010-11



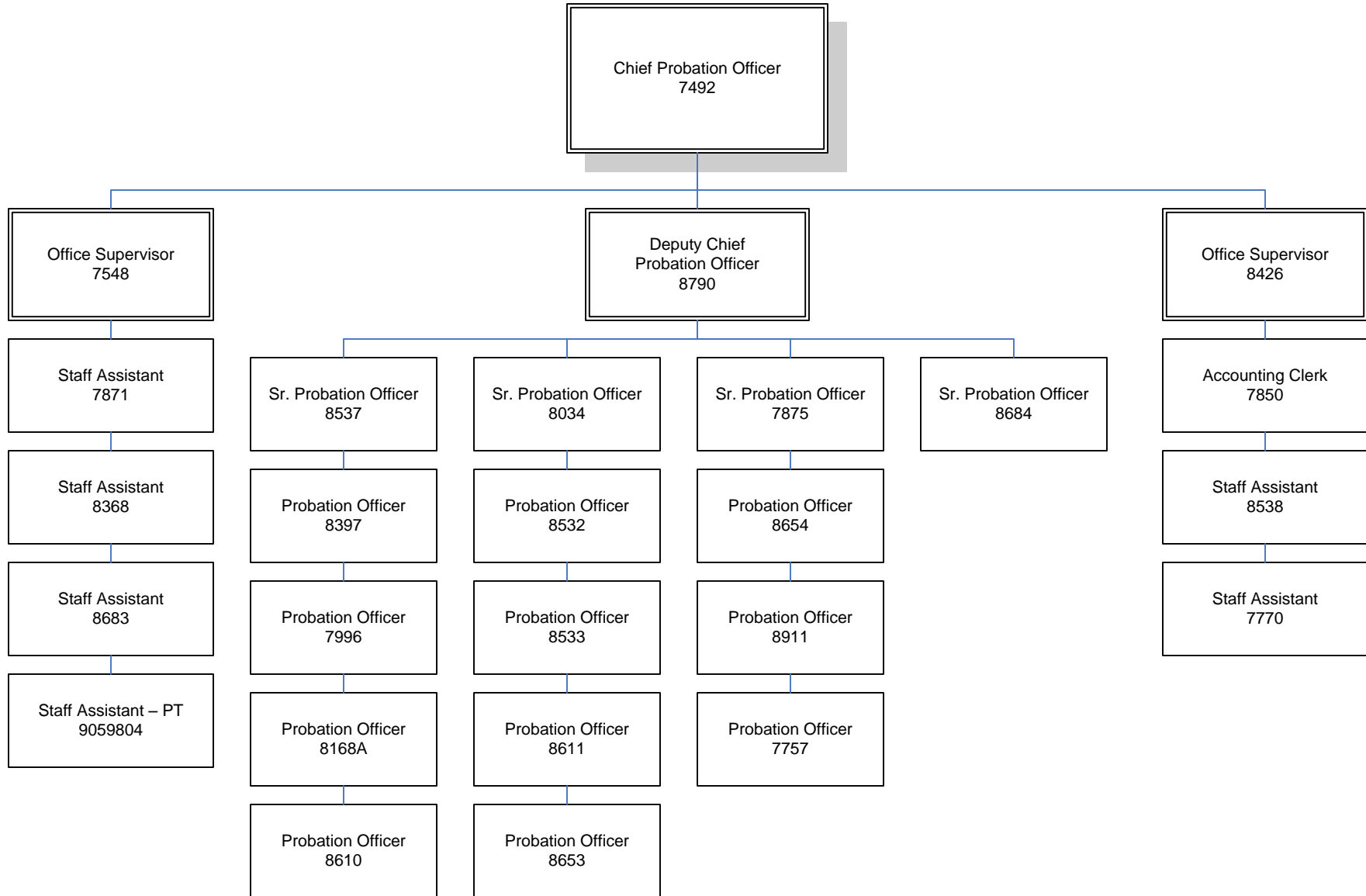
**Number of Positions:**

High Risk: 362  
Regular Risk: 21  
Total: 383

**Seminole County/BCC  
Public Safety Department  
Fire-Rescue Division  
FY 2010-11**



Seminole County/BCC  
Public Safety Department  
Probation Division  
FY 2010-11



Seminole County/BCC  
Public Safety Department  
Telecommunications Division  
FY 2010-11

