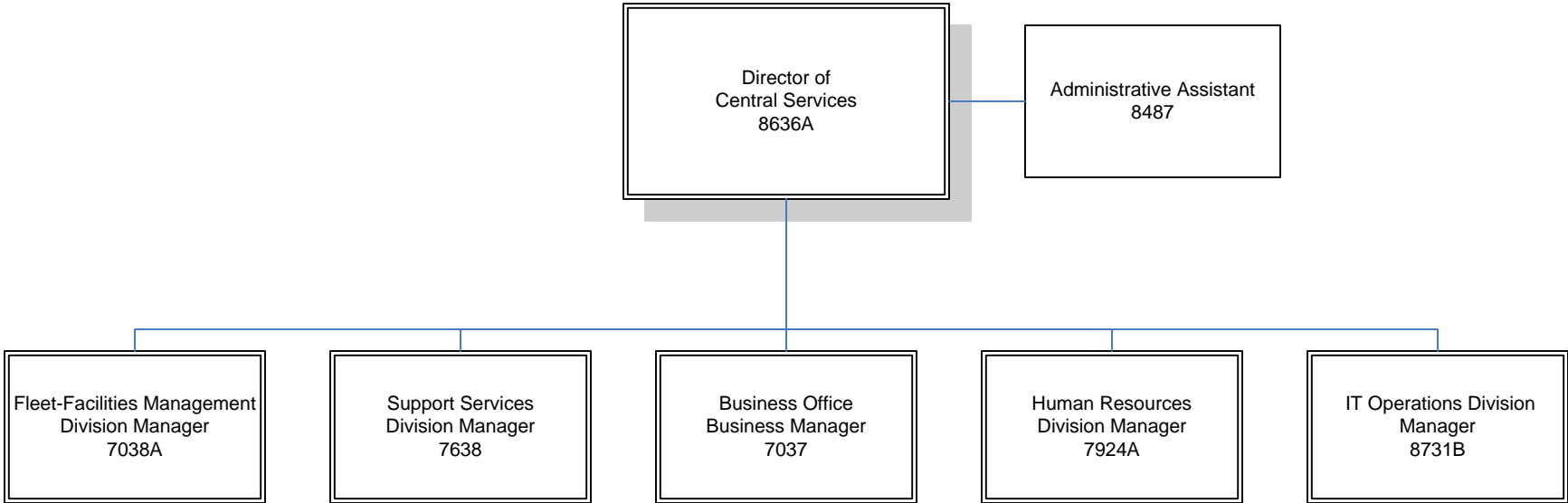


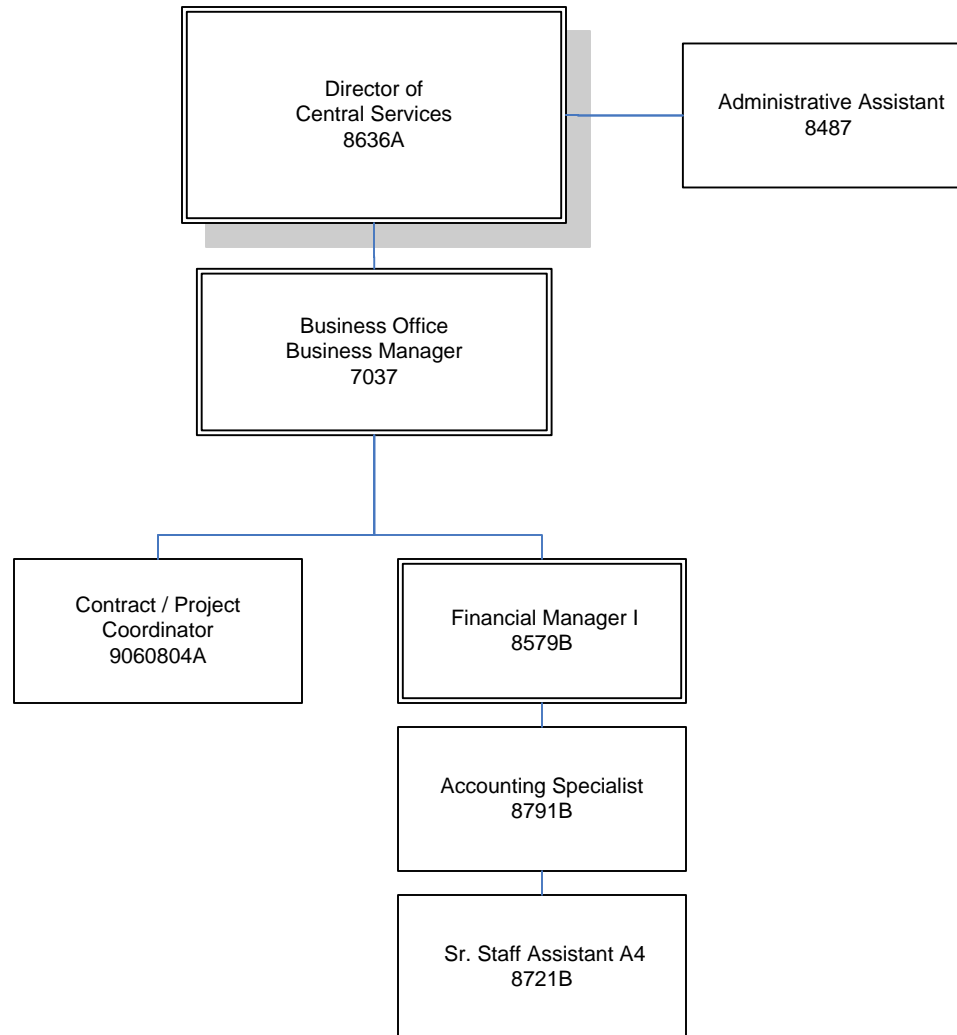
Seminole County/BCC
Central Services Department
FY 2010-11

103.25 FTEs / 104 positions
[102 FTE + (1) .75 PTE + (1) .50 PTE]



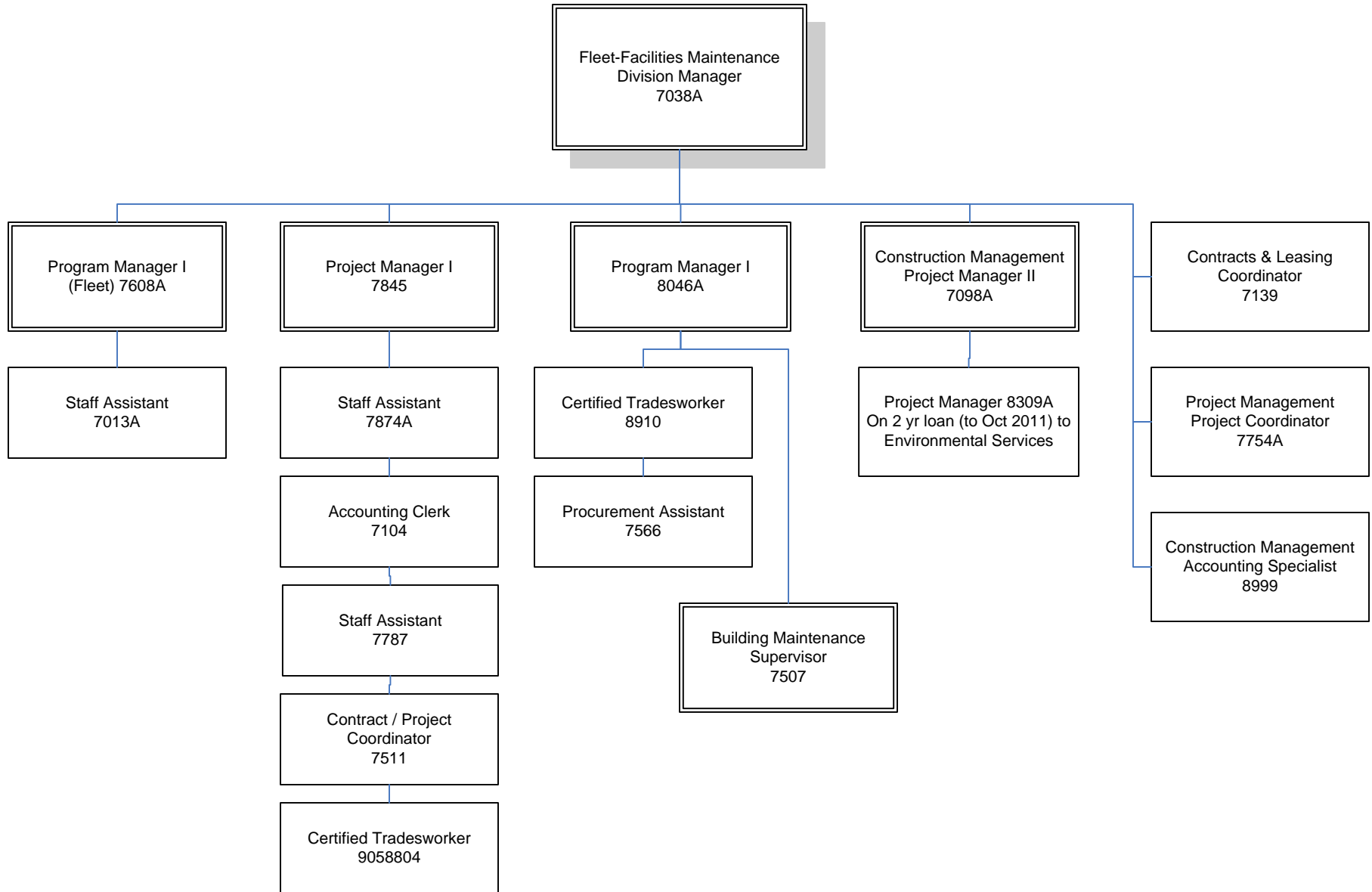
Seminole County/BCC
Central Services Department
Business Office
FY 2010-11

7 FTE

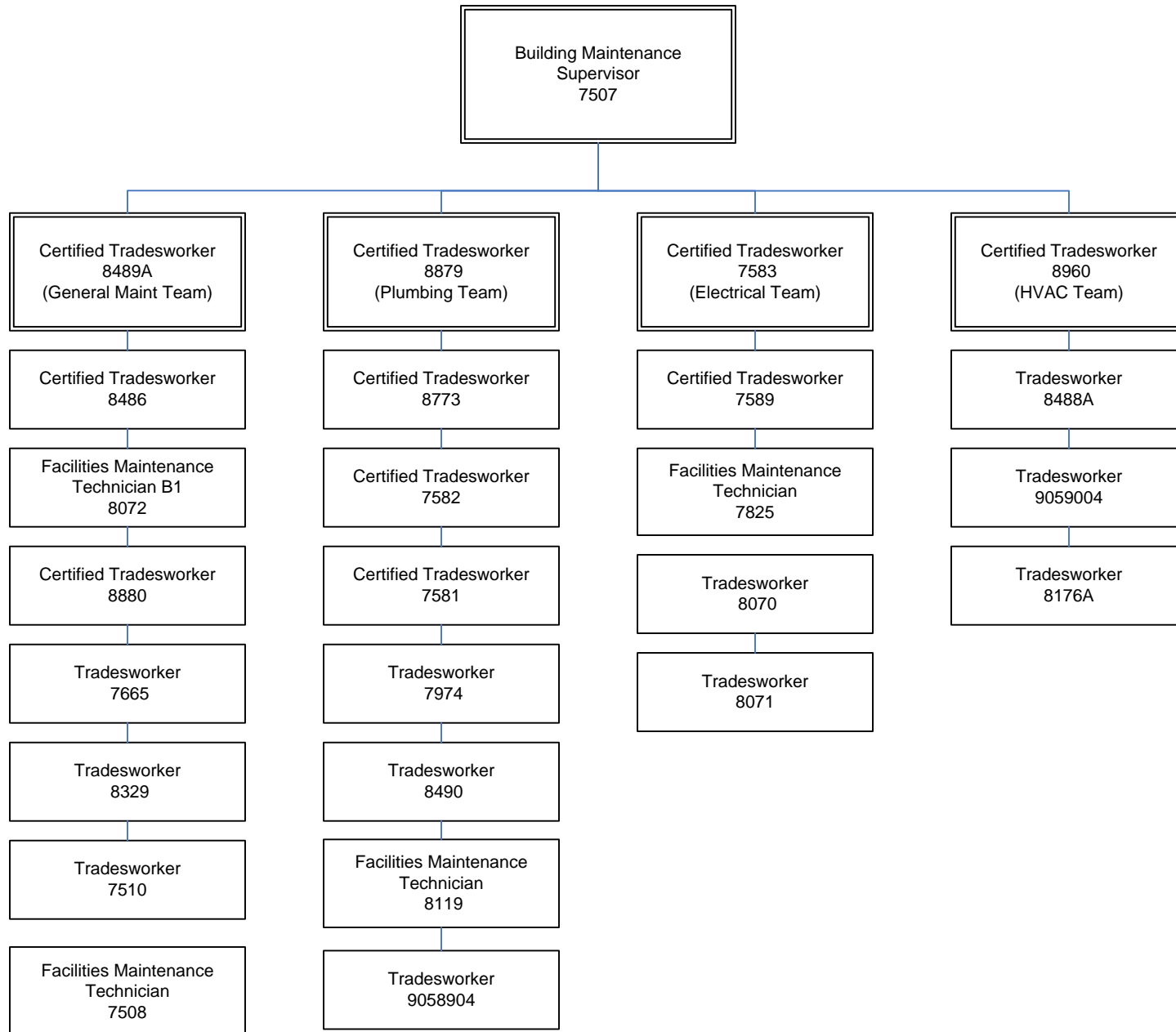


Seminole County/BCC
Central Services Department
Fleet-Facilities Maintenance Division 1 of 2
 FY 2010/11

42 FTE total

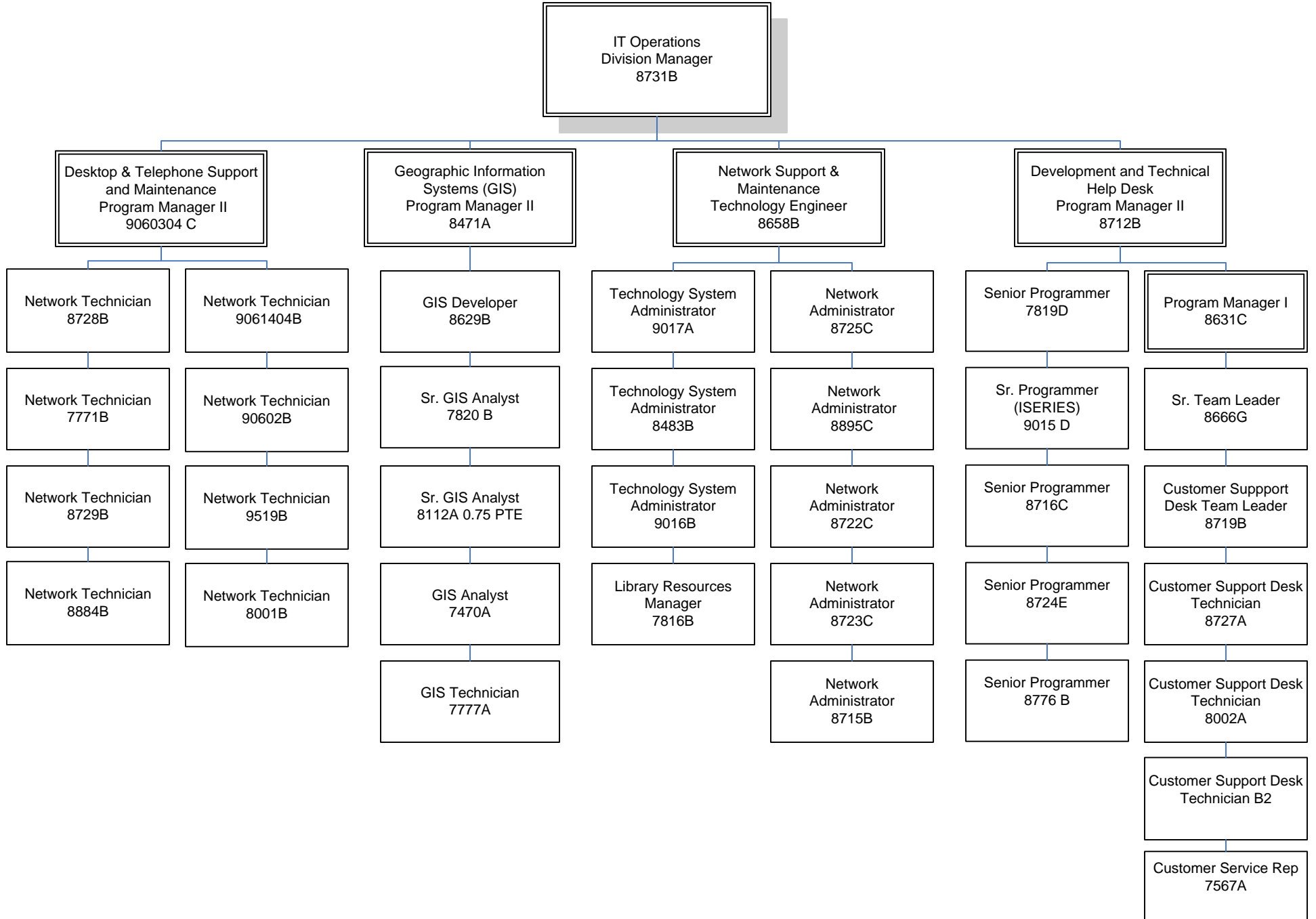


Seminole County/BCC
Central Services Department
Fleet-Facilities Maintenance Division 2 of 2
FY 2010/11



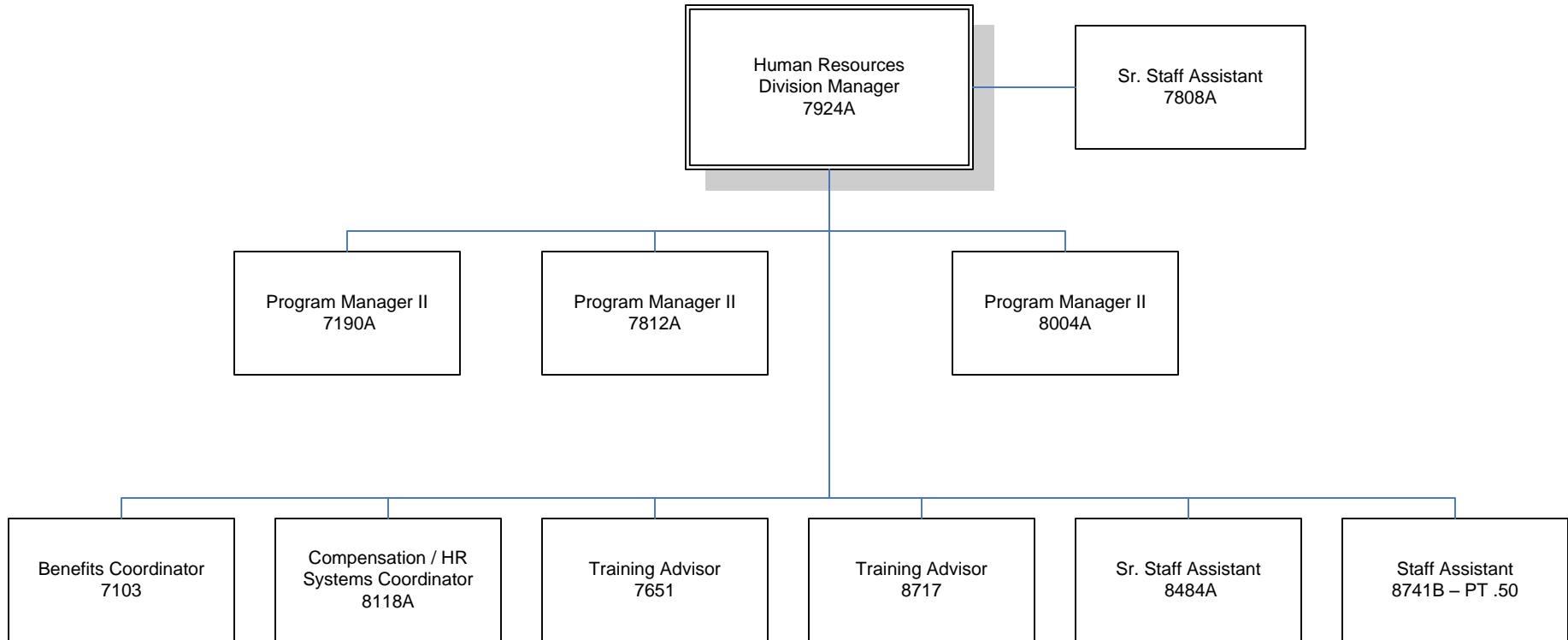
Seminole County/BCC
Central Services Department
IT-Operations Division
 FY 2010/11

38.75: 38 FTE; (1) .75 PTE



Seminole County/BCC
Central Services Department
Human Resources Division
FY 2010/11

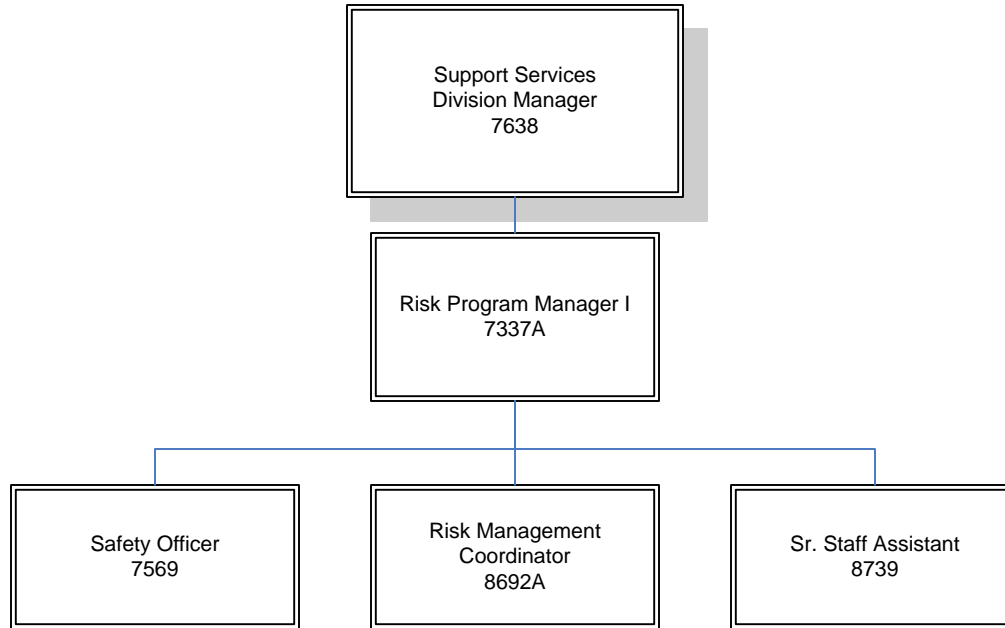
10.50: 10 FTE; (1) .50 PTE



Estimated Splits:
Division Manager – 80% HR, 20% Health
Training Advisor – 50% HR, 50% Health
Benefits Coordinator – 100% Health

Seminole County/BCC
Central Services Department
Support Services Division
FY 2010/11

5 FTE



Estimated Splits:
Division Mgr – 70% P&L, 30% WC
Property Liability Prog Mgr – 70% P&L, 30% WC
Safety Officer – 70% P&L, 30% WC
Risk Mgmt Coordinator – 100% WC
Sr. Staff Assistant – 80% P&L, 20% WC