

# SEMINOLE COUNTY NATURAL LANDS RULES OF USE

**Limitation of Liability** - Seminole County does not, by providing any of its Natural Lands for outdoor recreational purposes, extend any assurance that such areas or lands are safe for any purpose. The County will attempt to post known hazardous conditions. Users of Natural Lands take upon themselves the risks inherent in using undeveloped natural properties and the resulting and proximate events and conditions arising from the use of these wild and scenic lands.

**Access** - Natural Lands areas will be open each day from the period between sunrise and sunset unless posted otherwise. Natural Lands may be accessed only at County designated access points at permitted times.

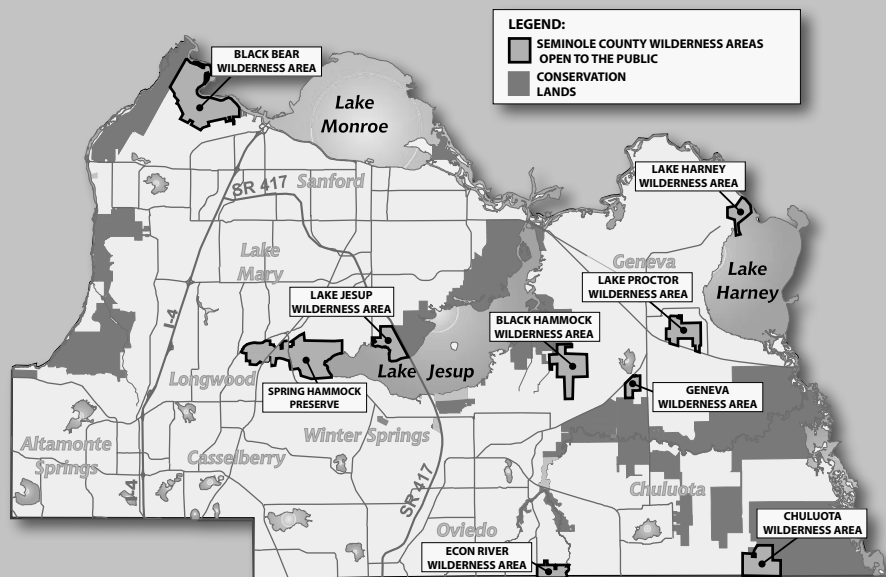
**Take nothing but pictures, kill nothing but time, leave nothing but footprints.** All plants and animals on Natural Lands are protected. It is unlawful to remove or destroy plants or to remove, destroy or harass animals.

**Pets** - Domestic animals are allowed on Natural Lands provided they are leashed at all times.

**Prohibited Activities** - The following activities are prohibited on Natural Lands except where special approval has been granted by permit from Seminole County or in specific designated areas: Hunting, swimming, camping, waste disposal, destruction of property, posting of handbills, ignition of fires, introduction of plants or animals, operation of motorized vehicles, public disturbance, alcoholic beverages, sales or concessions, construction and all other uses not specifically referenced.

**In order to increase your chances of viewing wildlife, please remember to pack out all trash/ waste, keep pets on a leash at all times and enjoy the natural surroundings quietly.**

## VISIT OUR OTHER WILDERNESS AREAS!

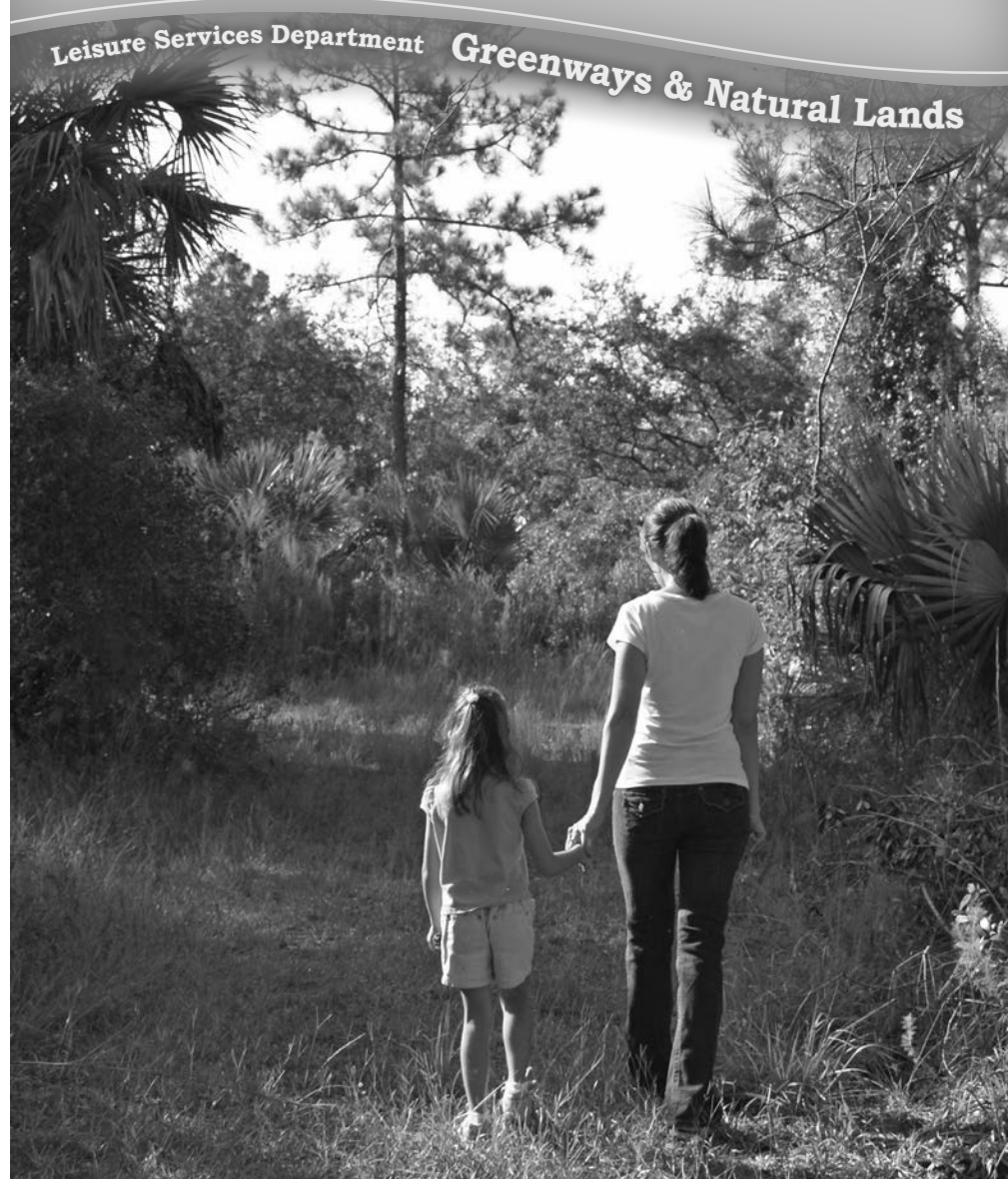


For more information on this property or the Seminole County Natural Lands Program, call (407) 349-0959 or visit our Web site at: [www.seminolecountyfl.gov/naturallands](http://www.seminolecountyfl.gov/naturallands)



# Geneva Wilderness Area

Leisure Services Department Greenways & Natural Lands



It Starts  
in Parks

SEMINOLE COUNTY  
NATURAL LANDS PROGRAM  
3485 N. County Road 426 • Geneva, FL 32732

WELCOME TO THE

# Geneva Wilderness Area

## Explore One of Seminole County's Naturally Beautiful Places!

The Geneva Wilderness Area (GWA) is a 180 acre property south of the Geneva community in east Seminole County. This site features a beautiful mosaic of flatwoods, ponds, sand pine scrub and bayhead swamp, all supporting an equally diverse collection of wildlife.

For your convenience, two main trails have been marked. The red blazes mark a loop trail within the Geneva Wilderness Area (GWA) that takes about 30 to 45 minutes to hike. Of course this will be longer if you stop at the amphitheater or along the lake to enjoy the view.

**Primitive Camping by permit only. Please call 407-349-0959**

**FLAGLER TRAIL:** The yellow blazes mark the connection to the Flagler trail which runs north to south (blazed in blue) through the Little Big Econ State Forest and crosses the Econ River. A hike from the GWA parking area to the Econ River and back takes approximately three hours.

**Seminole County Natural Lands offers several exciting programs for you & your family:**

Eco Camp • Environmental Education Programs for Schools • Guided Hikes  
Nature Programs • Eco Birthday Parties • Nature Center Rental for Events

**Get more information at: [www.seminolecountyfl.gov/naturallands](http://www.seminolecountyfl.gov/naturallands)  
or by calling 407-349-0959.**

## RECREATIONAL OPPORTUNITIES



HIKING



PHOTOS



BIKING



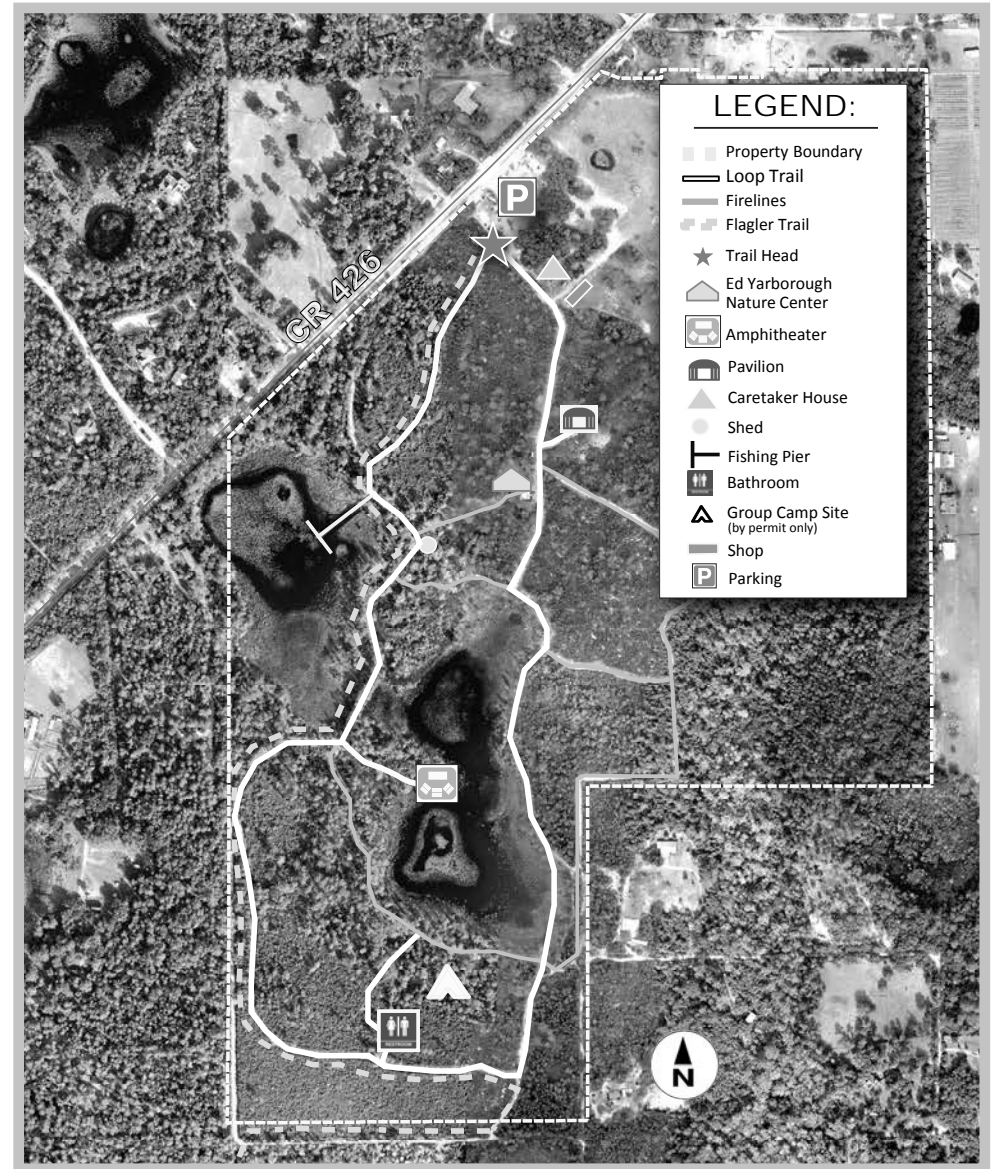
BIRDWATCHING



EQUESTRIANS

## THE ED YARBOROUGH NATURE CENTER

Looking for a unique place to hold a meeting, birthday party, event, program or retreat for groups up to 40? The Ed Yarborough Nature Center Campus at the Geneva Wilderness Area sits in the middle of 180 acres and is surrounded by Florida's natural beauty! This venue includes an air-conditioned building/nature center with a small kitchen, telephone, projector, screen, and restrooms, as well as, a 50 seat outdoor pavilion with restrooms, a fishing pier and nature trails. Cost: \$32/hr. + tax. For more information please call 407-349-0959. Nature based programs and activities can be provided for your event. Please call for details.



For your safety and the protection of resources,  
please stay on the designated trail system.