

# SEMINOLE COUNTY NATURAL LANDS RULES OF USE

**Limitation of Liability** - Seminole County does not, by providing any of its Natural Lands for outdoor recreational purposes, extend any assurance that such areas or lands are safe for any purpose. The County will attempt to post known hazardous conditions. Users of Natural Lands take upon themselves the risks inherent in using undeveloped natural properties and the resulting and proximate events and conditions arising from the use of these wild and scenic lands.

**Access** - Natural Lands areas will be open each day from the period between sunrise and sunset unless posted otherwise. Natural Lands may be accessed only at County designated access points at permitted times.

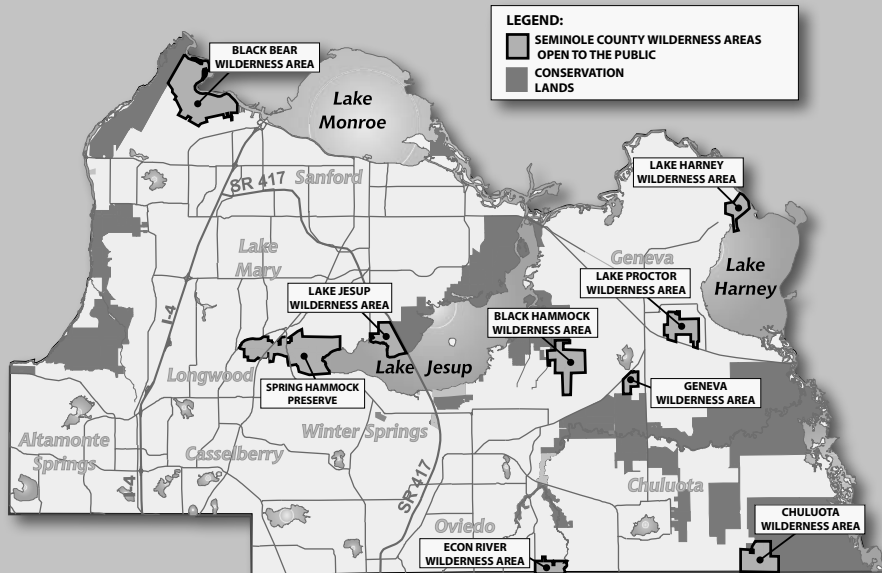
**Take nothing but pictures, kill nothing but time, leave nothing but footprints.** All plants and animals on Natural Lands are protected. It is unlawful to remove or destroy plants or to remove, destroy or harass animals.

**Pets** - Domestic animals are allowed on Natural Lands provided they are leashed at all times.

**Prohibited Activities** - The following activities are prohibited on Natural Lands except where special approval has been granted by permit from Seminole County or in specific designated areas: Hunting, swimming, camping, waste disposal, destruction of property, posting of handbills, ignition of fires, introduction of plants or animals, operation of motorized vehicles, public disturbance, alcoholic beverages, sales or concessions, construction and all other uses not specifically referenced.

**In order to increase your chances of viewing wildlife, please remember to pack out all trash/waste, keep pets on a leash at all times and enjoy the natural surroundings quietly.**

## VISIT OUR OTHER WILDERNESS AREAS!

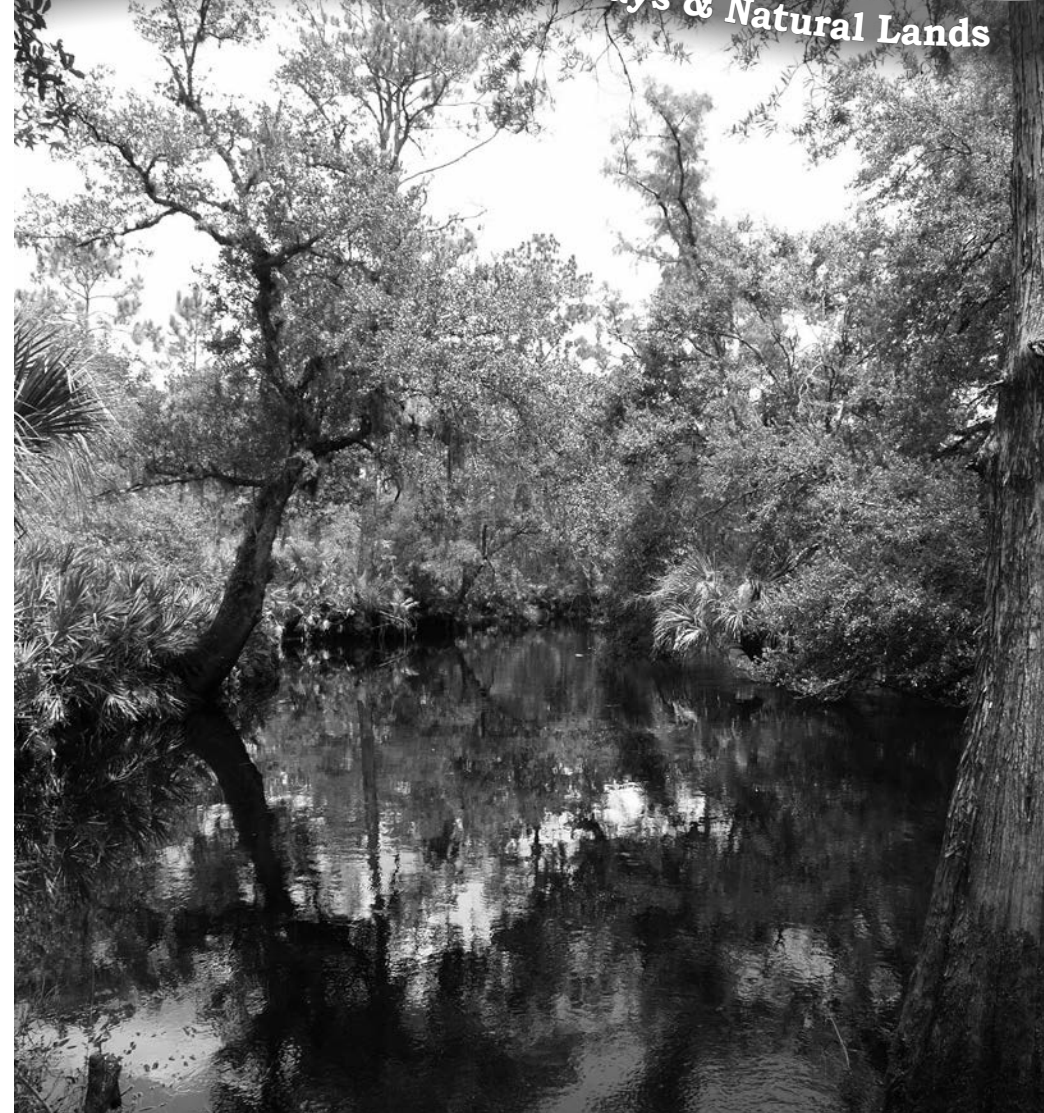


For more information on this property or the Seminole County Natural Lands Program, call (407) 349-0959 or visit our Web site at: [www.seminolecountyfl.gov/naturallands](http://www.seminolecountyfl.gov/naturallands)



# Econ River Wilderness Area

Leisure Services Department Greenways & Natural Lands



It Starts  
in Parks

SEMINOLE COUNTY  
NATURAL LANDS PROGRAM  
3795 Old Lockwood Road • Oviedo, FL 32765

WELCOME TO THE

# Econ River Wilderness Area

*Explore One of Seminole County's Naturally Beautiful Places!*

The Econ River Wilderness Area, a 240 acre site located southeast of Oviedo, has beautiful oak hammocks, pine flatwoods and sandhill habitats, bordered on the east by the Econlockhatchee River. The approximate three mile trail system on this site is open for hiking and horseback riding for local equestrians (no trailer parking available) and offers a natural experience close to an urban area. As you enjoy this site, watch for some of the native wildlife such as Sherman's fox squirrel, river otter and gopher tortoise.

**The trail system** on this site consists of a main loop trail blazed in red (apx. 2.2 miles) with a secondary flatwoods loop blazed in yellow (.5 mile). A round trip from the entrance to the river and back takes approximately 1.5 hours, longer if you stop to enjoy the scenery. Portions of the trail may be flooded during the wet season.

**Seminole County Natural Lands offers several exciting programs for you & your family:**

Eco Camp • Environmental Education Programs for Schools and Scout Troops • Community Programs • Guided Hikes • Specialized Classes for the Public

## RECREATIONAL OPPORTUNITIES



HIKING



PHOTOS



BIKING



BIRDWATCHING



EQUESTRIANS

## FAUNA YOU COULD SEE ON THE TRAIL

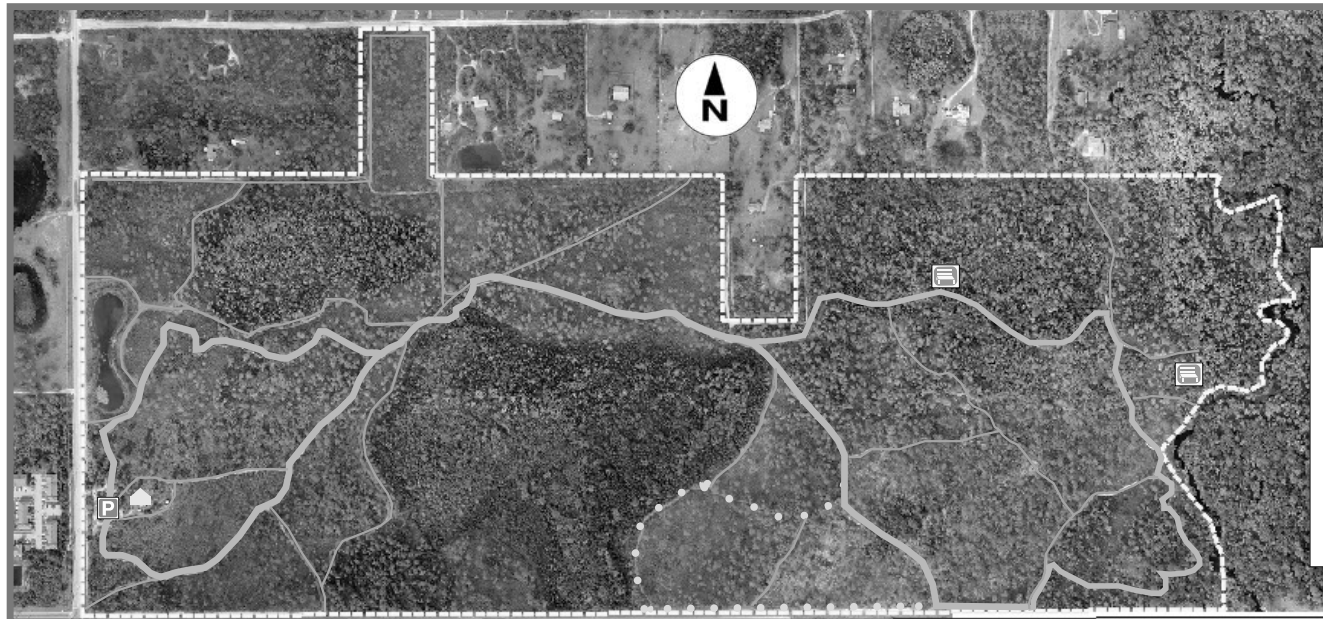


EASTERN  
DIAMONDBACK



GOPHER  
TORTOISE

Get more information at: [www.seminolecountyfl.gov/naturallands](http://www.seminolecountyfl.gov/naturallands)  
or by calling 407-349-0959.



### LEGEND:

- Property Boundary
- P Parking Area
- Red Trail
- Yellow Trail
- Fire Lines
- Benches
- Caretaker's Residence

For your safety and the protection of resources, please stay on the designated trail system.