

SEMINOLE COUNTY NATURAL LANDS RULES OF USE

Limitation of Liability - Seminole County does not, by providing any of its Natural Lands for outdoor recreational purposes, extend any assurance that such areas or lands are safe for any purpose. The County will attempt to post known hazardous conditions. Users of Natural Lands take upon themselves the risks inherent in using undeveloped natural properties and the resulting and proximate events and conditions arising from the use of these wild and scenic lands.

Access - Natural Lands areas will be open each day from the period between sunrise and sunset unless posted otherwise. Natural Lands may be accessed only at County designated access points at permitted times.

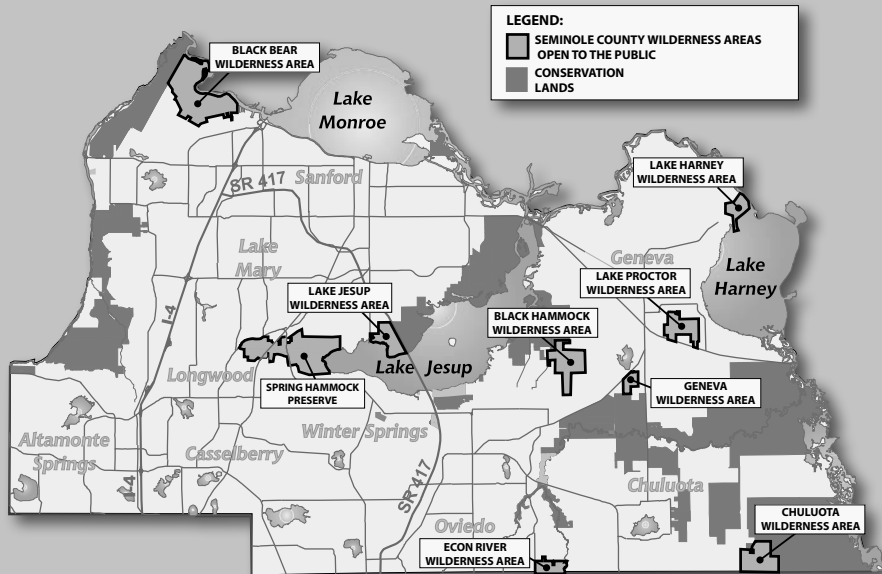
Take nothing but pictures, kill nothing but time, leave nothing but footprints. All plants and animals on Natural Lands are protected. It is unlawful to remove or destroy plants or to remove, destroy or harass animals.

Pets - Domestic animals are allowed on Natural Lands provided they are leashed at all times.

Prohibited Activities - The following activities are prohibited on Natural Lands except where special approval has been granted by permit from Seminole County or in specific designated areas: Hunting, swimming, camping, waste disposal, destruction of property, posting of handbills, ignition of fires, introduction of plants or animals, operation of motorized vehicles, public disturbance, alcoholic beverages, sales or concessions, construction and all other uses not specifically referenced.

In order to increase your chances of viewing wildlife, please remember to pack out all trash/waste, keep pets on a leash at all times and enjoy the natural surroundings quietly.

VISIT OUR OTHER WILDERNESS AREAS!

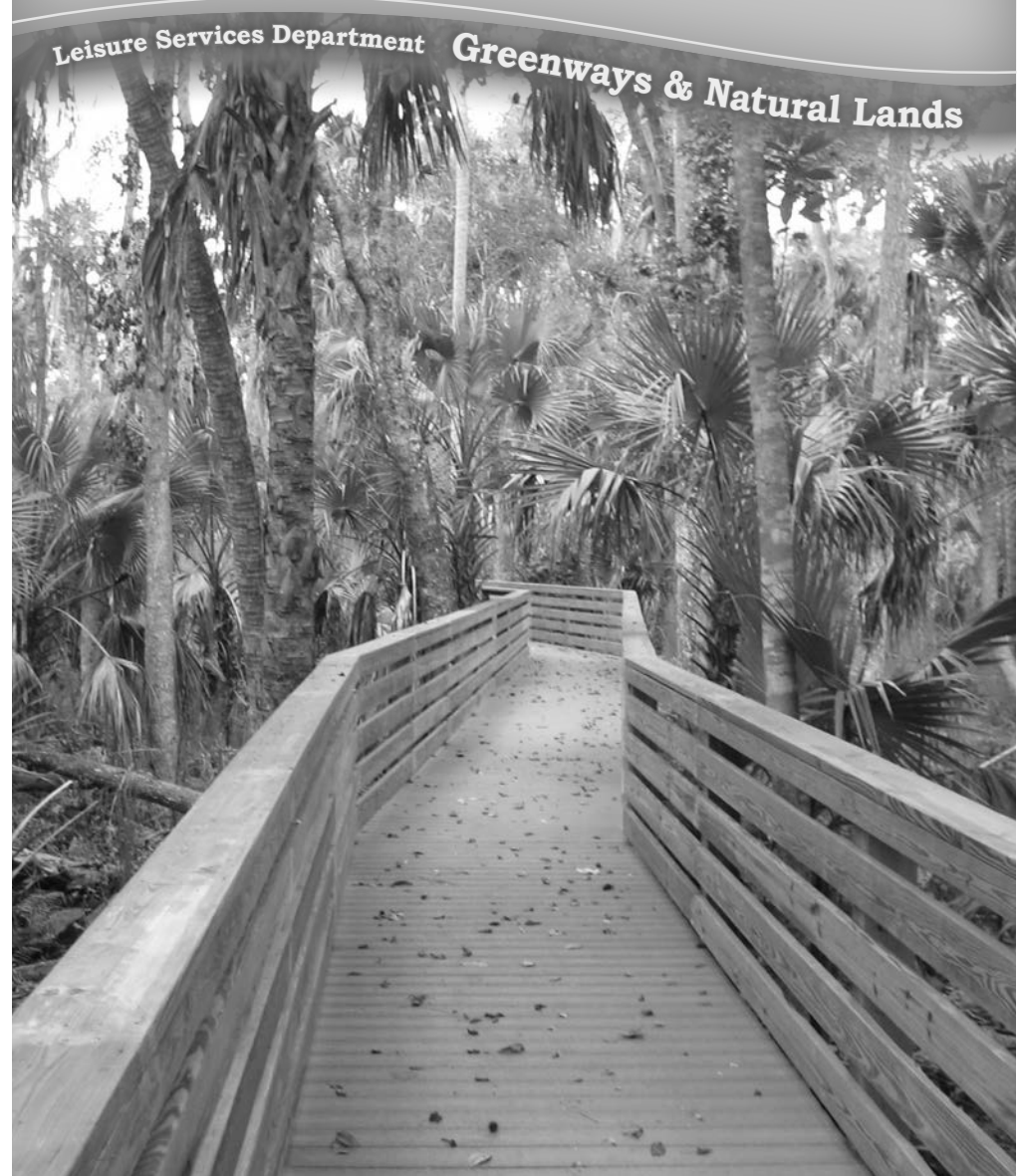


For more information on this property or the Seminole County Natural Lands Program, call (407) 349-0959 or visit our Web site at: www.seminolecountyfl.gov/naturallands



Black Hammock Wilderness Area

Leisure Services Department Greenways & Natural Lands



It Starts
in Parks

SEMINOLE COUNTY
NATURAL LANDS PROGRAM
3276 Howard Avenue • Oviedo, FL 32765

WELCOME TO THE

Black Hammock Wilderness Area

Explore One of Seminole County's Naturally Beautiful Places!

The **Black Hammock Wilderness Area (BHWA)** is a 700 acre site located in east Seminole County near the town of Geneva. This site contains a diverse collection of native plant communities and wildlife and helps protect important recharge areas for the Geneva Bubble (local aquifer). Additionally, the wetland habitats of this property filter water on its way to Lake Jesup.

The trail system at the BHWA consists of one main loop trail (4.5 miles round trip) blazed in blue. There are many unmarked trails (fire lines) on this property. Please stay on the marked (blue) trail system for your safety.

These trails take you on a boardwalk over a mixed hardwood swamp, through pine flatwoods and finally, sand pine scrub. In an effort to protect the resources of this relatively small wilderness area, the trail system is limited to hikers, bikers and local equestrians. Please note that for the safety of equestrians and other users, horses are not permitted on boardwalks.

Seminole County Natural Lands offers several exciting programs for you & your family:

Eco Camp • Environmental Education Programs for Schools and Scout Troops • Community Programs • Guided Hikes • Specialized Classes for the Public

Get more information at: www.seminolecountyfl.gov/naturallands
or by calling 407-349-0959.

RECREATIONAL OPPORTUNITIES



HIKING



PHOTOS



BIKING



BIRD WATCHING

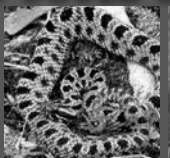


EQUESTRIANS

FAUNA YOU COULD SEE ON THE TRAIL



GREAT HORNED OWL



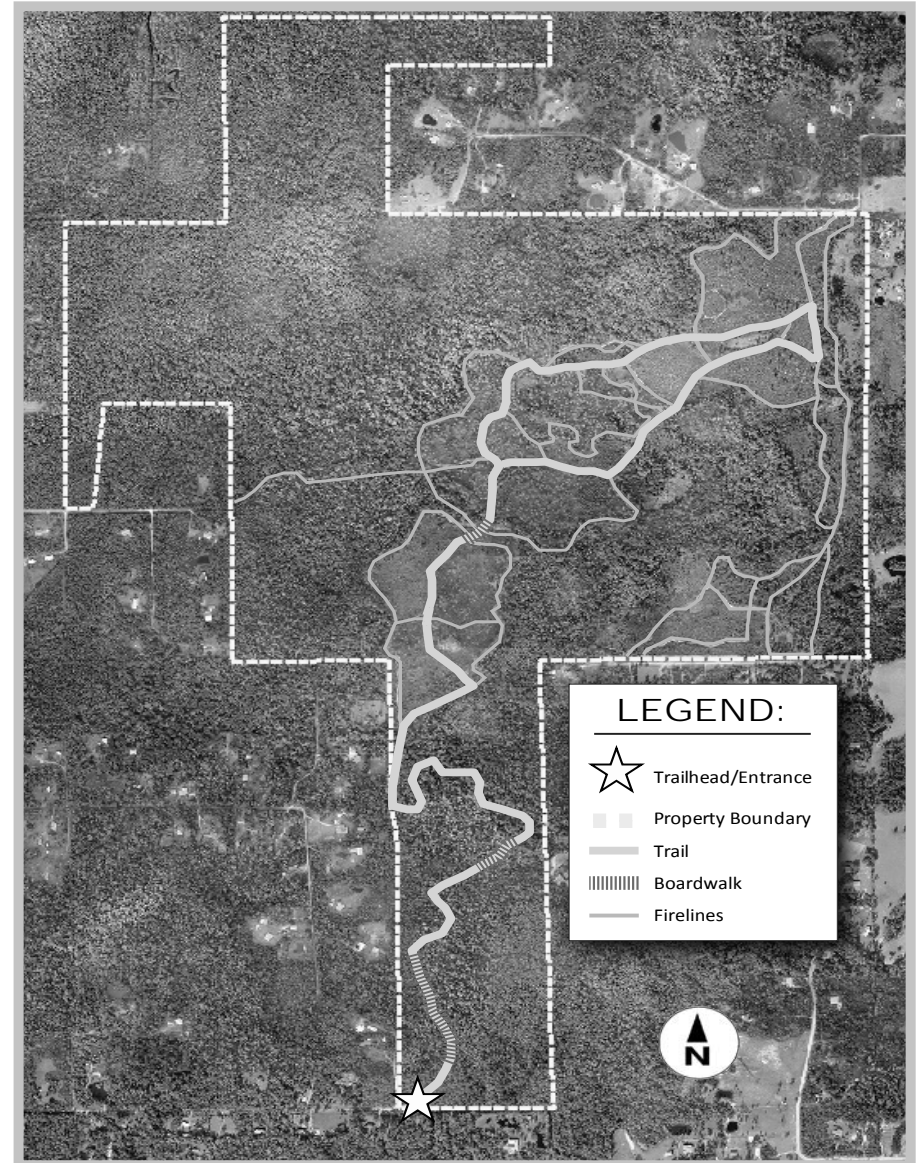
DUSKY PIGMY RATTLESNAKE



WHITE-TAILED DEER



WILD TURKEY



For your safety and the protection of resources, please stay on the designated trail system.