

The State of the County



Presented by Seminole County
Commission Chairman Daryl McLain



SEMINOLE COUNTY
Growing Success



SEMINOLE COUNTY
Growing Success

A Tribute to Heroes, Our Armed Forces





SEMINOLE COUNTY
Growing Success

Maintaining our Commitment to Quality

The Community of Choice for

FAMILIES



AND

BUSINESSES





SEMINOLE COUNTY
Growing Success

Seminole County:



Jacksonville

Tallahassee/
Florida State

Gainesville/
University of Florida

St. Augustine

Panama Beach
Spring Break!

Daytona
Beach

Kennedy
Space
Center

Orlando/
Disney World
Sea World

Orlando
Magic/
UCF

Cocoa
Beach

Tampa/
Ybor City
Sarasot

Lake
Okeechobee

The
Everglades

Naple

Miami/
South Beach

The
Keys

**The
Heart
of Florida**



SEMINOLE COUNTY
Growing Success

Quick Facts



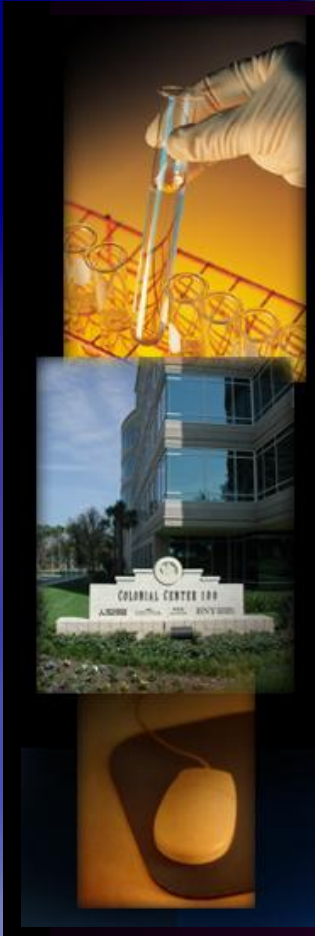
- 394,000 + population in 2003 with an annual growth rate of 2.5%.
- The second most densely populated county.
- For the past 27 years, SAT scores in Seminole County have exceeded state and national averages.



SEMINOLE COUNTY
Growing Success

Quick Facts

- Seminole County's bond rating consistently rated high, "AA".
- Fastest growing occupations in Seminole will continue to be in the technology industry.
- Growth in Seminole County property values has been substantial and sustained and reflects a healthy local commercial real estate market and a growing economy.





SEMINOLE COUNTY
Growing Success

Quick Facts



- Total assessed office space values in Seminole broke the billion dollar mark in 2002, by far the highest percentage growth of any county in the Metro Orlando region.
- Total industrial space grew from 20.5 million sq ft in 2001 to 21.3 million sq ft in 2002.
- Assessed values on this space grew from \$566 million to \$685 million.

Economic Development Program



SEMINOLE COUNTY
Growing Success

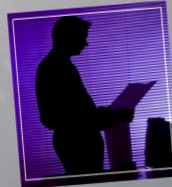


**SMALL
BUSINESS
FOCUS**



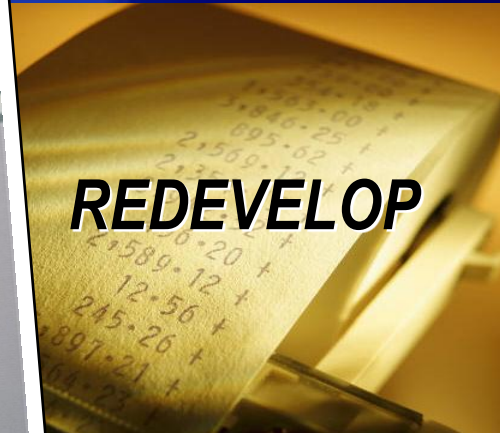
Economic
Development
Strategy

Seminole County
Economic
Development
Department



April 2003

Submitted by:
Glatting Jackson Kercher Anglin Lopez Rinehart, Inc



REDEVELOP

www.businessinseminole.com



SEMINOLE COUNTY
Growing Success

North I-4/Lake Mary



Orlando Sanford International Airport



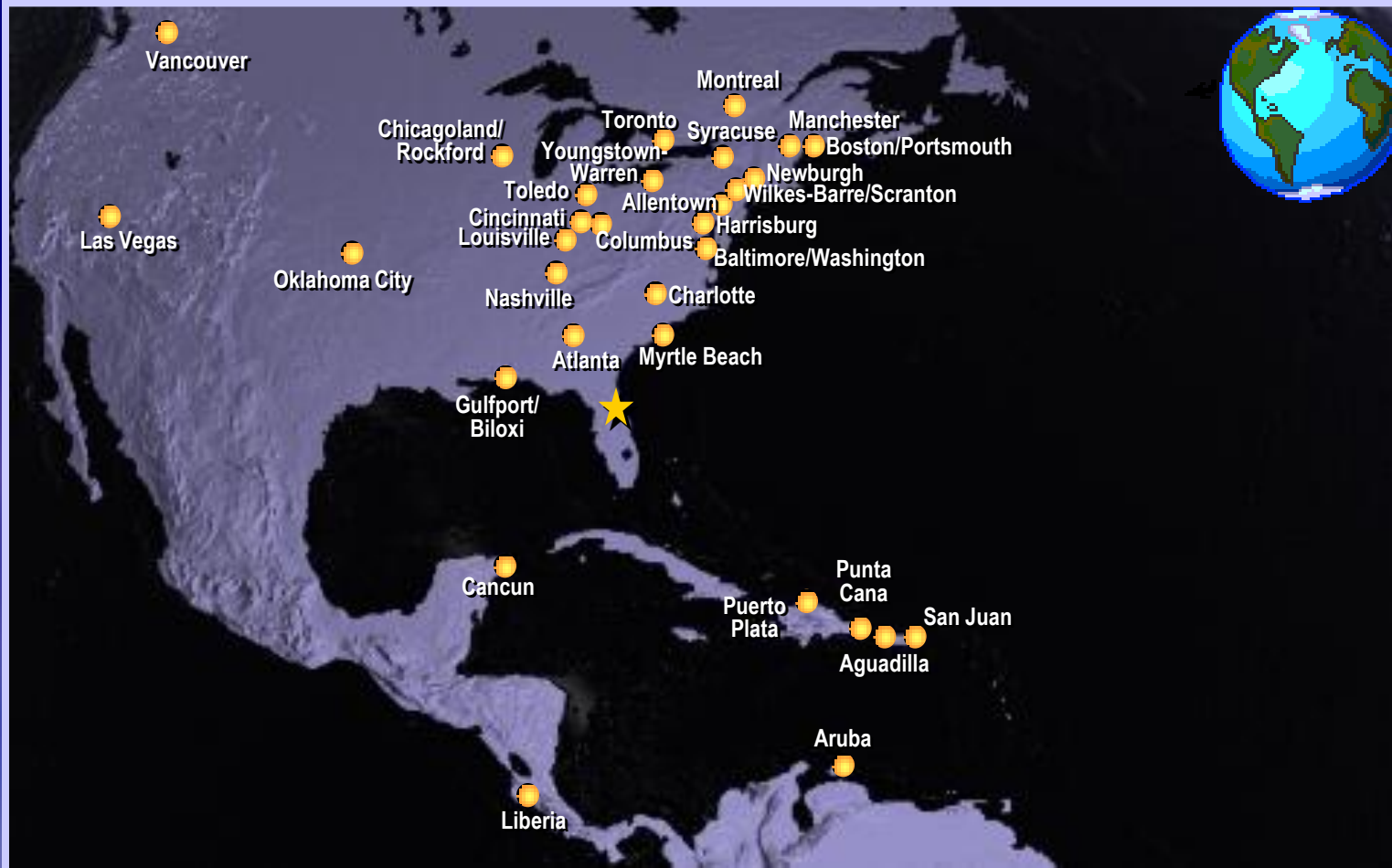
SEMINOLE COUNTY
Growing Success





SEMINOLE COUNTY
Growing Success

Airline Service



Airport Potential for Growth



SEMINOLE COUNTY
Growing Success



LEGEND

Future Acquisition	Runway Development
Future Airport Development	Runway Expansion/Improvements
Existing Airport Terminal	Taxi Expansion/Improvements
Future Terminal Expansion	Future Roads
Airport Noise Contours	
Existing Airport Boundary	

Source: Orlando Sanford International Airport Master Plan Update
Note: The Orlando Sanford International Airport Master Plan Update is subject to change.
www.orlandosanfordairport.com

October 2003
ORLANDO SANFORD INTERNATIONAL AIRPORT
ECONOMIC DEVELOPMENT PLAN

PURPOSE:

To identify the Economic Development Opportunities for the Orlando Sanford International Airport (OSIA) Commerce Park and surrounding Airport Area.

GOAL:

To maximize Economic Development Potential of the Airport Commerce Park and surrounding areas through the establishment of:

- ✦ Area specific land development regulations & public awareness
- ✦ Identification of anticipated facilities and services
- ✦ Business development activities

OBJECTIVES:

- ✦ Harmonize future land use and land development regulations of OSIA, City of Sanford and Seminole County
- ✦ Identify business development activities and actions
- ✦ Identify required services and facilities based on growth and development
- ✦ Identify and formalize public awareness according to FAA Guidelines

HISTORY:

Actions since the March 1997 Economic Development Plan, include the following:

- ✦ Higher Intensity Planned Development – Airport (HIP-A) future land use designation
- ✦ Airport Master Plan Update (July 2002)
- ✦ Foreign Trade Zone Designation (#250)



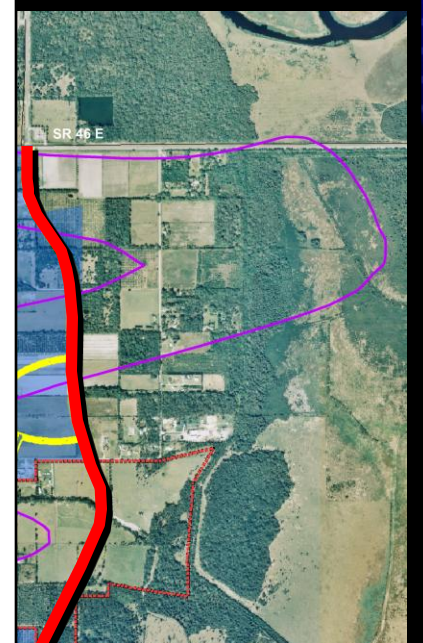
407-665-7134
<http://www.businessinseminole.com/>



407-585-4010
<http://www.orlandosanfordairport.com/>



407-330-6609
<http://www.ci.sanford.fl.us/>



U.S. Highway 17-92 Corridor CRA



SEMINOLE COUNTY
Growing Success



MISSION

Realize the full economic and functional potential of the US 17-92 corridor through strategic and timely public investments that enhance the competitiveness and desirability of the corridor for the business community and the general public.

ivate

County Job Growth Incentive Awards



SEMINOLE COUNTY
Growing Success

- 💰 In 2003, three businesses were assisted in relocation, expansion or startup creating 219 jobs and yielding \$14.5 million in capital investment.**
- 💰 Since 1995, 24 total companies assisted resulting in 9,289 new jobs with an annual average wage of \$37,000.**
- 💰 Benefits: 18,000 spin-off jobs, \$273 million in capital investment and \$23 million in new ad valorem taxes.**



Small Business Development



SEMINOLE COUNTY
Growing Success

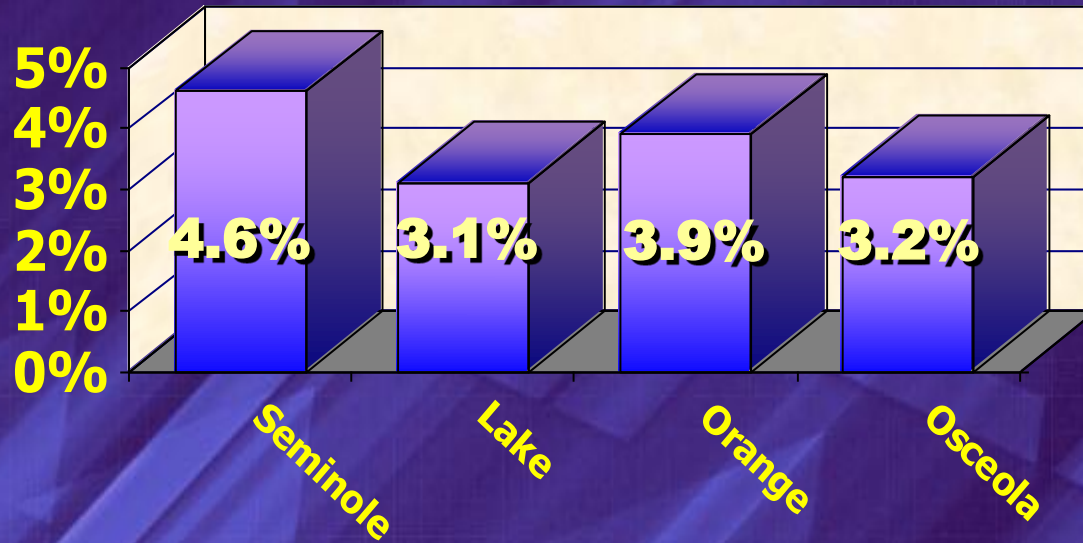


Job Growth



SEMINOLE COUNTY
Growing Success

Annual Average 1982 - 2002



Retail in Seminole County



SEMINOLE COUNTY
Growing Success

Seminole County 2002 Retail Sales Per Household

Retail Category	Retail Sales \$
Vehicles/Parts	12,276
Food/Beverage	3,505
General	3,386
Merchandise	2,527
Eating/Drinking	2,624
Department Store	3,305
Apparel/Accessories	1,800
Furniture/Appliances	2,207
Health/Personal	1,420
Total	\$35,346

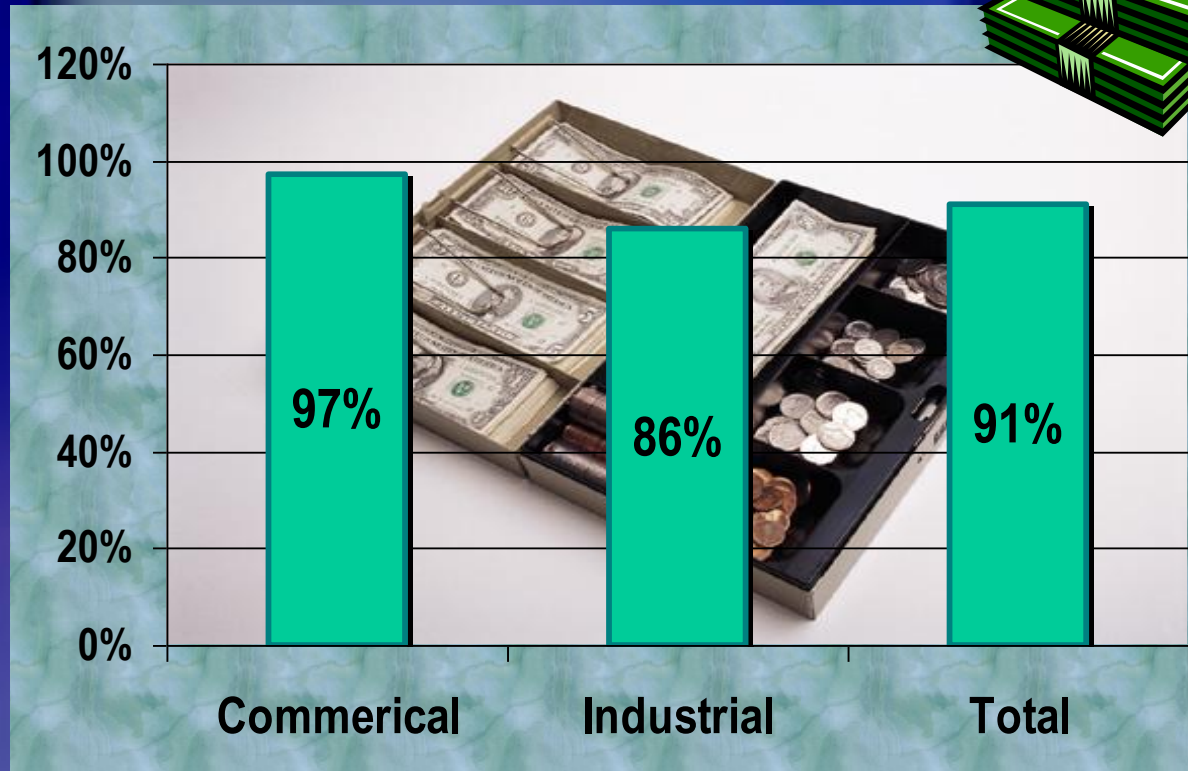
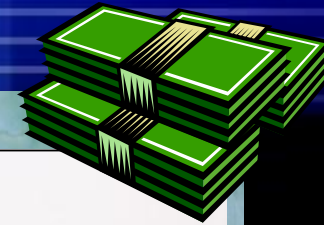


Ad Valorem Tax Revenue Increases



SEMINOLE COUNTY
Growing Success

Growth from 1993 to 2003



Housing to Meet all Needs



SEMINOLE COUNTY
Growing Success



Expansion of Public Facilities



SEMINOLE COUNTY
Growing Success



Meeting Growth Needs in Fire/Rescue



SEMINOLE COUNTY
Growing Success



Seminole County Fire Training Complex

Infrastructure Improvements ~ 1 Cent Sales Tax



SEMINOLE COUNTY
Growing Success

SCHOOLS



The Local Option 1¢ Sales Tax

ROADS



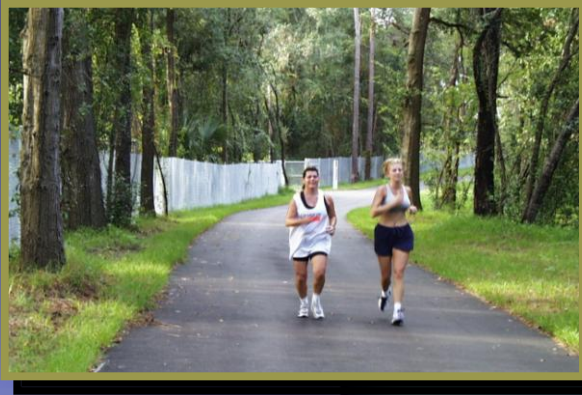
SIDEWALKS



Trails Program



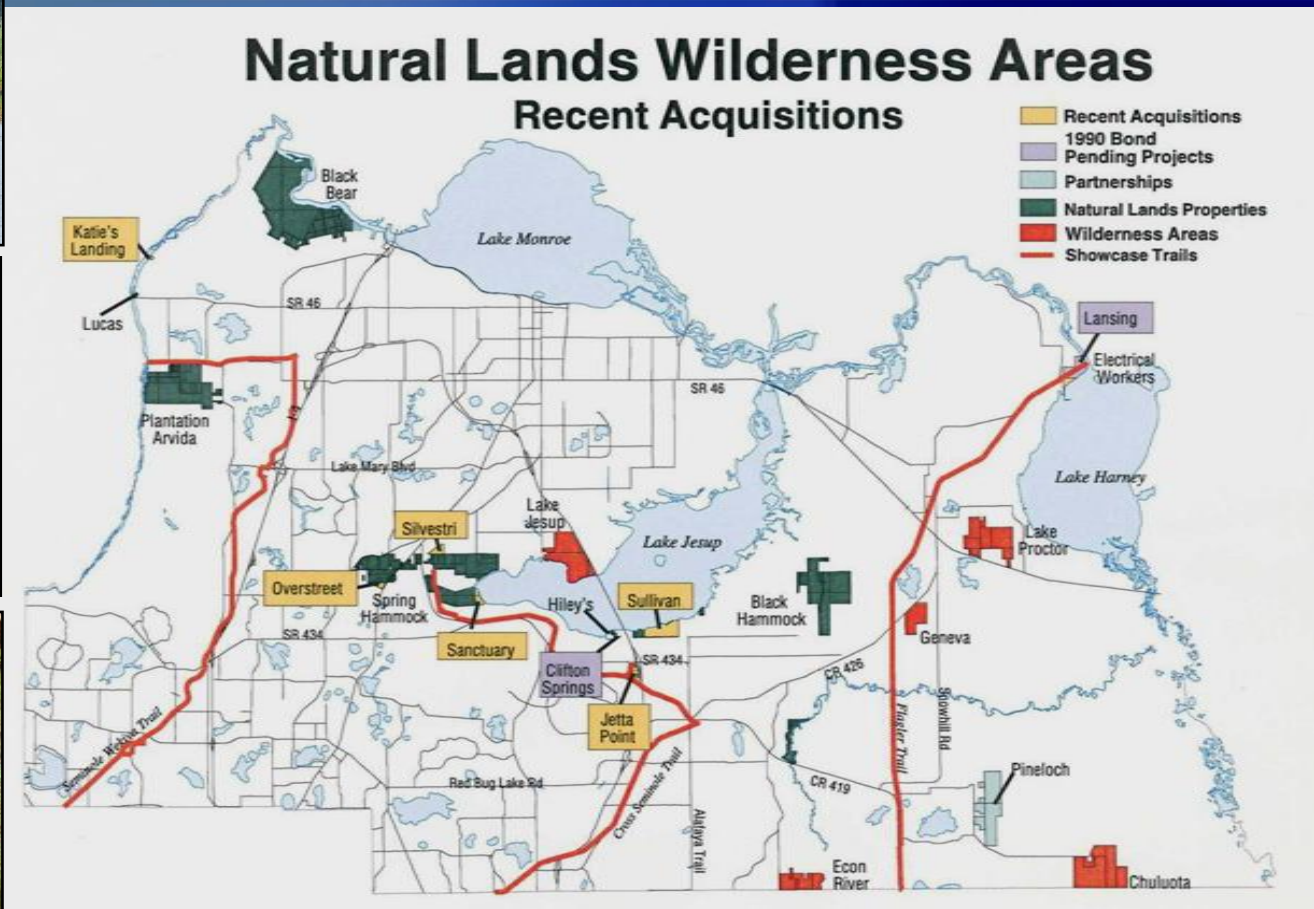
SEMINOLE COUNTY
Growing Success



The Natural Lands Program



SEMINOLE COUNTY
Growing Success





SEMINOLE COUNTY
Growing Success

New Tourism Direction ~ Sports and Business



Tourism Fast Facts

- 800,000 parties spent at least one night. 95% of these visitors were U.S. domestic and 5% were international. 56% were corporate business travelers.
- Tourism contributes 17,000 jobs.
- 2002 Economic Impact was \$5.1 million in tax revenues, an increase of \$1.4 million.
- 2003 Sports Events brought 10,000 room nights to area hotels and \$4 billion in economic impact.



SEMINOLE COUNTY
Growing Success

Connecting to the Community



SEMINOLE COUNTY
FLORIDA'S NATURAL CHOICE

ENVIRONMENTAL SERVICES
WATER & SEWER ACCOUNTS ONLINE

[E.S. Main Page](#)
[County Home Page](#)
[Sign On](#)
[Forgot PIN?](#)
[Contact Us](#)
[Help](#)

Account Number:

PIN:

* Account Number must be entered exactly as it appears on your monthly statement.

DEPARTMENTS RESIDENT BUSINESS VISITOR FIND HOME

SEMINOLE COUNTY SEARCH

FLORIDA'S NATURAL CHOICE 2/4/2004 11:13:01 AM

ENVIRONMENTAL SERVICES

BUSINESS OFFICE

Water & Sewer Accounts Online

PAY ONLINE!
Click here to begin using the Water & Sewer Accounts Online

NEW USERS - PLEASE READ

WHAT IS THIS?
WHAT ARE THE BENEFITS?
WHAT ARE THE FEATURES?
HOW DO I FIND MY PIN NUMBER TO SIGN ON?
WHO CAN I CONTACT WITH QUESTIONS / PROBLEMS?

WHAT IS THIS?

Seminole County's Click2Gov for Water and Sewer Systems provides un-incorporated county citizens comprehensive, up-to-date account information, billing history, and service and consumption summaries over the Internet. **Bills may be paid online with a major credit card.** For general information, read the ["10 Easy Steps to Paying Your Bill Online"](#) information.

WHAT ARE THE BENEFITS?

Improves service by giving you the citizen online access to your account information at your convenience - 7 days a week. This makes it more convenient that having to

RESOURCES

[Department Main Page](#)

DIVISIONS

- [Business Office](#)
- [Announcements](#)
- [Administration & Billing](#)
- [Business Plans](#)
- [Frequently Asked Questions](#)
- [Rates](#)
- [Statistics](#)
- [Water Accounts Online](#)
- [Contacts](#)
- [Planning, Engineering and Inspections](#)
- [Solid Waste Management](#)
- [Wastewater](#)
- [Water](#)
- [Water Conservation](#)

CONTACT INFORMATION

Business Office

Physical
500 West Lake Mary Blvd
Sanford, FL 32773-7499
Mailing
P.O. Box: 958443
Lake Mary, FL 32795-8443
Phone: (407) 865-2110 (normal)
Phone: (407) 865-0063 (after hrs)

Environmental Services

500 West Lake Mary Blvd
Sanford, FL 32773-7499

www.seminolecountyfl.gov



SEMINOLE COUNTY
Growing Success

SGTV ~ Seminole Government Television



**SGTV's programming guide is available at:
www.seminolecountyfl.gov/cid/sgtv/guide.asp.**

Accessible Government



SEMINOLE COUNTY
Growing Success



The logo for the Citizens' Academy Program. It features a graduation cap above a stylized map of Florida. Below the map is the text "SEMINOLE COUNTY FLORIDA'S NATURAL CHOICE". Underneath is a stylized column icon and the text "Citizens' Academy Program" in a cursive font.

[www.seminolecountyfl.gov/
citizensacademy](http://www.seminolecountyfl.gov/citizensacademy)

[www.seminolecountyfl.gov/
sbureau](http://www.seminolecountyfl.gov/sbureau)

Connecting to the Region through Partnerships



SEMINOLE COUNTY
Growing Success



**VOLUSIA
COUNTY
GOVERNMENT**



**Orange
County**





SEMINOLE COUNTY
Growing Success

Digital Media Partnership/Strategy

Expanding digital media with
key partners:

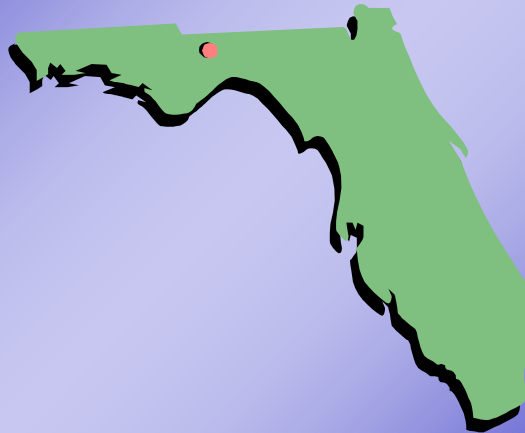
- Future alignment of business development goals
- Partnerships with the University of Central Florida and Seminole Community College



Legislative Issues



SEMINOLE COUNTY
Growing Success



Water Supply



SEMINOLE COUNTY
Growing Success



Seminole County Watershed Atlas Quick Search
Waterbody go

Helping communities make informed decisions by providing up-to-date information on our vital water resources.

THE ATLAS
EXPLORE the county's water resources

Research
DOCUMENTS and metadata for scientists

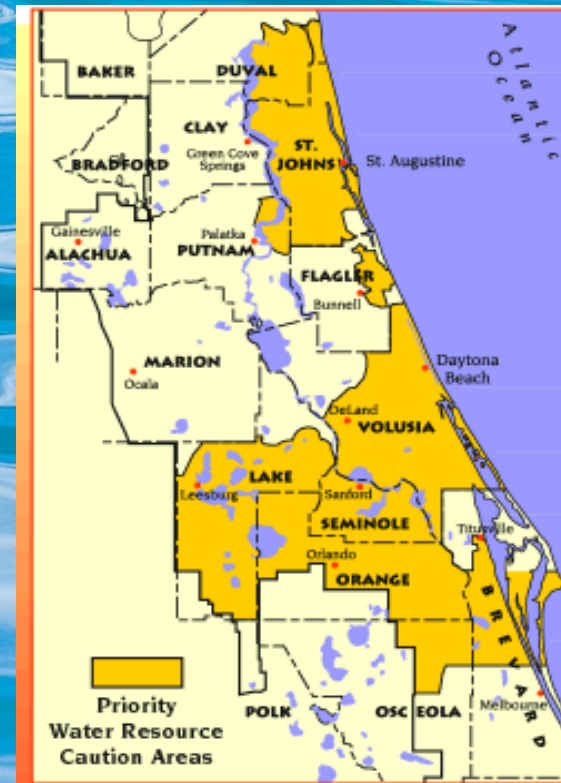
Management
DOCUMENTS on watershed management

Educational Tools
LEARN more about water resources

About the Atlas Contact Us Help

The data obtained from the Water Resource Atlas Data Base may be provisional and thus subject to revision.

Developed by:
Seminole County University of South Florida USF CDHR



Seminole Forecast



SEMINOLE COUNTY
Growing Success



- By 2013, Seminole County will be home to 500,000 residents.
- By 2010, jobs in Seminole will grow from 187,000 to 252,000, a 35% growth rate.
- Service jobs alone will increase by 45%.
- Professional & technical occupations, currently at 35,000, will grow to 52,000 by 2010.
- By 2010, I-4/Lake Mary corridor could be the largest office submarket with retail and residential.







SEMINOLE COUNTY
Growing Success

Seminole Forecast – K~12 Education

MISSION

Seminole County Public Schools will be the premier school district in the State of Florida and will be recognized nationally for high standards and academic performance.

-  Every student will graduate from high school prepared for the future as a lifelong learner and a responsible citizen in a democratic society
-  All students and all schools will perform at the highest levels
-  There will be equitable facilities and opportunities for all students
-  The district's personnel will be highly qualified, diverse, innovative, enthusiastic, energetic and dedicated to the mission.



Seminole Forecast – Secondary Education



SEMINOLE COUNTY
Growing Success

SEMINOLE COMMUNITY COLLEGE

- 10th largest of Florida's 28 community colleges.
- 39th largest producer of AA degrees out of more than 1,200 Community Colleges in the US.
- 35,000 students are expected to attend this year.
- Investing today for tomorrow by building toward the future.



Seminole Forecast – Secondary Education



SEMINOLE COUNTY
Growing Success

UNIVERSITY OF CENTRAL FLORIDA

- Recognized nationally as being a leader in engineering and technology.
- Continues to outpace other universities in the state with student enrollment.
- Will be the largest university in the state within the next ten years.



Meeting Growth Needs



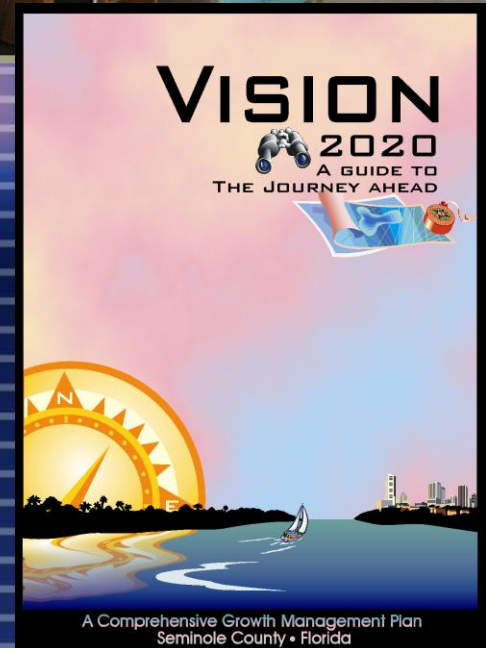
SEMINOLE COUNTY
Growing Success



Wekiva
River
Protecti
Area



rural
area





SEMINOLE COUNTY
Growing Success

Our Commitment



to our Community

Looking to the Future



SEMINOLE COUNTY
Growing Success



- High Value Businesses follow creative & talented people.
- Lifestyle, business support & good schools attract talented people.
- Build & sustain the Seminole vision.



SEMINOLE COUNTY
Growing Success

Continuing our Success for the Future

VISION

To be the Premier County Government
in Florida, Recognized for Service
Exceeding Expectations

MISSION

Serving the Community
to Improve the Quality of Life



SEMINOLE COUNTY
Growing Success

Thank You!