

Visit us on the Internet
www.seminolecountyfl.gov

Online Features:

- Request a new or replacement recycle bin
- Lookup service level or days of waste service
- Request a service option change
- PDF version of this brochure



TWO LOCATIONS TO SERVE YOU

CENTRAL TRANSFER STATION

1950 State Road 419, Longwood, FL 32750
 Open 7:30 a.m. - 5:30 p.m., Monday - Saturday

SEMINOLE COUNTY LANDFILL

1930 East Osceola Road, Geneva, FL 32732
 Open 7:30 a.m. - 5:30 p.m., 7 days a week

Important Contact/Resource Information

Environmental Complaints: 407-665-2261

Illegal Dumping Reporting: 407-665-6650
 Seminole County Sheriff's Office (non-emergency)

My Resident: www.seminolecountyfl.gov/guide/resident.aspx

Prescription Drug Disposal: Pitch Your Pills
<http://seminolepreventioncoalition.org/pitchyourpills/>

Service Options/Rates/Assessment: 407-665-7178
 MSBU Program (E-mail: MSBUProgram@seminolecountyfl.gov)
www.seminolecountyfl.gov/msbu

Wildlife (Bear Information): 850-488-4676
 Florida Fish & Wildlife Conservation Commission
<http://myfwc.com/wildlifehabitats/managed/bear/encounter>
 Bear-resistant containers for household waste are available for purchase or lease. For more info, visit www.seminolecountyfl.gov or call 407-665-2260.

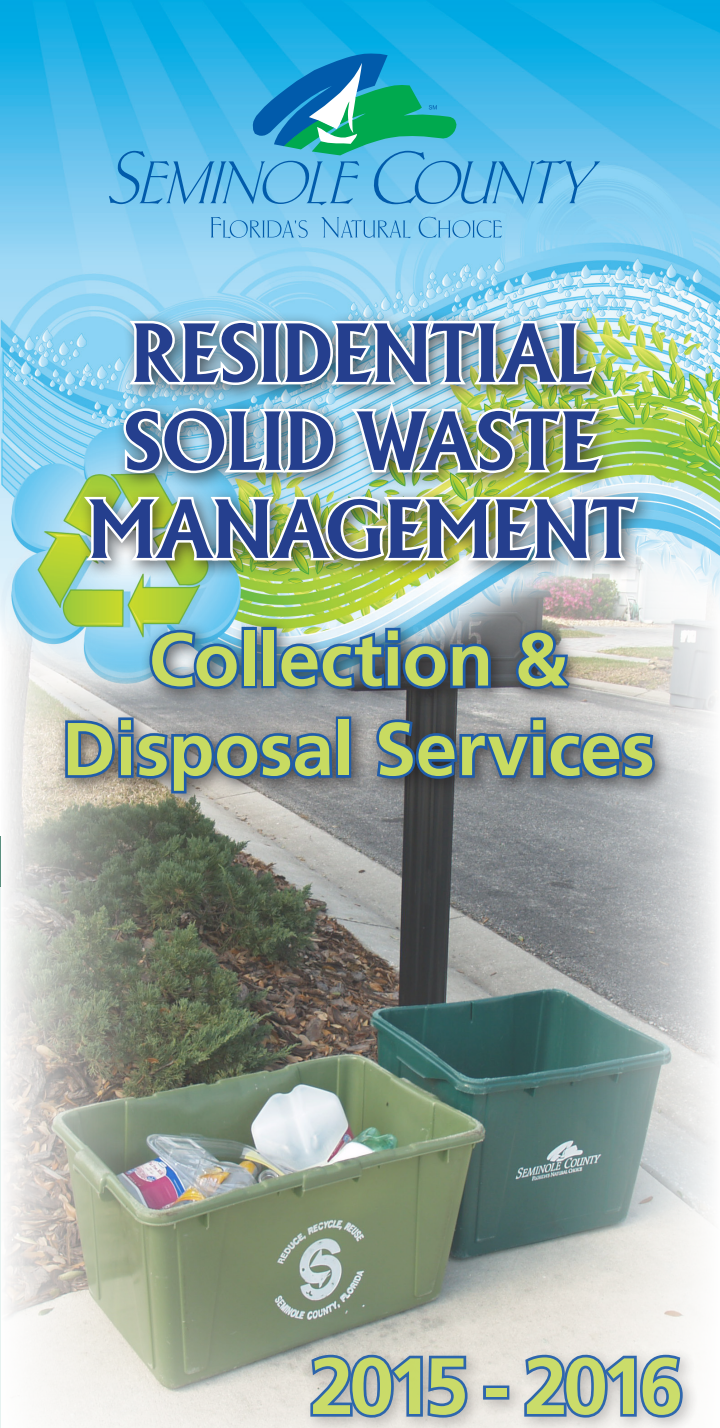
For specific information regarding the available services and/or disposal facilities, or for assistance with collection services, please contact:

Solid Waste Management Division:
(407) 665-2260

www.seminolecountyfl.gov/envsrvs/solidwaste
 e-mail: swcustomerservice@seminolecountyfl.gov



RESIDENTIAL SOLID WASTE MANAGEMENT
Collection & Disposal Services



2015 - 2016

UNINCORPORATED SEMINOLE COUNTY

Este folleto se puede obtener en español por correo electrónico a: MSBUProgram@seminolecountyfl.gov



Residential Solid Waste Management

Seminole County provides collection, recycling and disposal services for residential solid waste on behalf of residential communities throughout the unincorporated area of the county. These services are funded by assessments collected annually via property tax bills. Assessment is based on the number of dwellings on a property and the cost to provide collection and disposal services. The annual assessment for collection and disposal services is billed in advance of the service calendar year.

Collection and recycling services are provided through contracted service providers [referred to as "Haulers"]; disposal services are provided at facilities owned and operated by Seminole County.

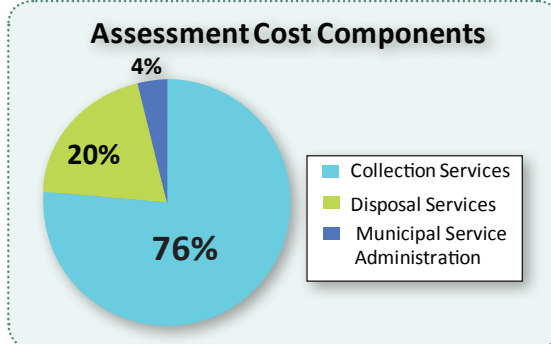
The **Solid Waste Management Division** of the Department of Environmental Services provides management of collection service contracts and the day-to-day operation of the disposal facilities. The Solid Waste Management Division monitors the service providers and provides customer service relative to collection and disposal activity. For collection & disposal related information and customer service, please contact:

Solid Waste Management Division
www.seminolecountyfl.gov/envsrvs/solidwaste
 E-mail: swcustomerservice@seminolecountyfl.gov
407-665-2260

The **MSBU Program** of the Department of Resource Management facilitates the financial management of these services, including the levy of assessments and service option record management.

For service rates, service options, and other assessment related information and customer service, please contact:

MSBU Program
www.seminolecountyfl.gov/msbu
 E-mail: MSBUProgram@seminolecountyfl.gov
407-665-7178



Collection Service Options & Rates
 Unincorporated Seminole County

Residential property owners are offered a choice in collection services. The options vary by services included, frequency of service and price. Service option 1 is the most popular choice as it includes all service categories along with the greatest frequency of collection. Property owners are encouraged to select the service option that best matches their needs. Requests for changing service option should be communicated to the **MSBU Program**.

Service Option	Household Garbage (unlimited volume)	Recycle (unlimited volume)	Yard Waste (limited volume)	Annual Assessment Tax Year 2015
				Service Year 2016
1	2	1	1	\$220.00
2	2	1	0	\$213.00
3	1	1	1	\$206.00
4	1	1	0	\$199.00

Service Option Changes

Collection option changes can be requested online or by contacting the MSBU Program. Option changes are coordinated with the property tax bill. Option changes must be requested by September 1 to be included on the property tax bill and effective with the next service year. A written confirmation of requested option change will be mailed to the owner. For more information about service options or making changes, please contact the **MSBU Program**.

Ownership Change & Occupancy

New owners of existing homes assume the prior owner's option until a change is requested. Service options continue year to year unless otherwise requested by the property owner. The Solid Waste Management Assessment is assigned based on number of dwellings; not occupancy.

New Residential Dwellings

Newly constructed houses are assigned option 1 when a building permit is issued. Townhouses are assigned option 2. Collection services begin when the construction is completed and a certificate of occupancy issued.

Collection Information & Requirements



Collection Days

Specific collection days and routes are established for each area of the county. Depending on the route assignment, household garbage is collected either Monday & Thursday or Tuesday & Friday for service options that include two collection days per week. For options with one collection day per week, collection is either Thursday or Friday. Yard Waste collection is Wednesday for customers with service Options 1 or 3. Recycling collection day varies throughout the County. Online *My Resident* look-up information offers property specific collection day details, or call **407-665-2260**.

Holiday Schedule – Collection service is not scheduled for New Years Day, Independence Day, Thanksgiving Day or Christmas Day. Collection will resume after the holiday per normal schedule.

Collection Time & Location

Collections are on a scheduled route; however, collection may occur anytime between 6 a.m. and 8 p.m. All materials need to be within 6 feet of the curbside or at the designated collection point by 6 a.m. on collection day.



Household Garbage

An unlimited amount of household garbage may be placed for collection in garbage cans (must have lids and handles) or bags. To be collected, a container size cannot exceed 50-gallons; and must weigh no more than 50 pounds. Household garbage placed for collection must meet these requirements to be collected.

Wheelbarrows, buckets, & recycle bins are not proper containers for household garbage or yard waste collection!



Yard Waste

For property with service options that include yard waste collection, yard waste material such as tree branches, grass clippings and palm fronds will be collected on Wednesday. Yard waste must be in bags, in cans or tied bundles. There is a weekly limit of 15 containers (any combination of bags, cans, or bundles), each not exceeding 50 gallons in size nor 50 pounds in weight. Bundles cannot be longer than 4 feet or contain branches larger than 4 inches in diameter. Yard waste must meet these requirements to be collected.



Recycling

An unlimited amount of recycling may be placed for collection. Recycling bins are provided and replacements may be requested online or by calling **407-665-2260**. Recycling must meet these requirements to be collected: (1) Items must be placed inside the bin. (2) Remove lids and labels. (3) Please empty and rinse containers before placing in bins.

The following are collected for recycling:

- Brown paper grocery bags (no wax, no liners, no wet strength)
- Cans (aluminum and steel cans from food items)
- Cardboard (corrugated, non-coated) - flattened & cut to fit inside bin
- Glass bottles & jars (but, no broken glass)
- Newspaper, supplements, magazines, catalogs, telephone books
- Non-hazardous aerosol cans (empty & nozzles removed)
- Plastic Containers #1 - 7 (like butter or yogurt containers; check recycle # on bottom)
- Pasteboard (boxes for items such as beer, cereal, pizza, shoes, soda, tissues, and paper towel & toilet paper rolls)

Note: The following items are not collected for recycle: Aluminum foil/pie plates, drinkware, egg cartons, light bulbs, plastic bags, plastic plant trays/containers, or buckets (even if recycle #1 - 7), Styrofoam, waxed cardboard, and other items not listed as accepted for recycle collection. **These Items may be included with household garbage placed for collection.**

Special Christmas Tree Collection Days

Collection service will be provided for CHRISTMAS TREES each Wednesday in January. Trees longer than 8 feet must be cut in half.



On-Call Collection Services

On-call collection services may be available for large items such as bicycles, furniture, furnaces, lawn equipment/mowers, white goods (large appliances) and materials from minor household repairs/remodeling projects. For more information about on-call services, call **407-665-2260**.

Disposal Information & Locations



Excluded from Collection Services

The Solid Waste Collection and Disposal Program of Seminole County offers a variety of services to property owners. While most household solid waste is eligible for collection service, there are certain exclusions. Excluded items, such as household hazardous waste [HHW], construction & demolition materials, electronics, petroleum products (gasoline/oil), tires, and Sharps containers require special handling and are not collected curbside.



Disposal Facilities

Seminole County operates two disposal facilities that are open to the public – the *Central Transfer Station* and the *County Landfill*. Both locations accept residential solid waste that is typically collected curbside. Each location also offers special disposal programs and restrictions that may apply to certain items. As each facility may accept specific items – “know before you go” is encouraged. When disposal fees are applicable, payment is required at time of disposal. Cash and checks (with valid driver’s license) are accepted at both locations. For more information, call **407-665-2260**.

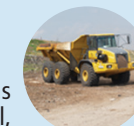
When visiting the County disposal facilities, proof of residency is required to receive any available disposal benefits.

Special disposal services available at the County Landfill

1930 East Osceola Road, Geneva, FL 32732
Open 7:30 a.m. - 5:30 p.m., 7 days a week

- Automotive batteries*
- Motor oil (used) & oil filters (used)*
- Construction & Demolition Debris – items such as asphalt, brick, concrete, fencing, steel, glass, lumber, pipe/conduit, roofing materials, wallboard, wiring, etc.
- Propane tanks*
- Vegetation from tree removal or land clearing (such as large stumps, branches, etc)

*Items with an asterisk are only accepted from private Seminole County households/residents. For more information about business/commercial disposal, call **407-665-2260**.



Special disposal services available at the Central Transfer Station

1950 State Road 419, Longwood, FL 32750
Open 7:30 a.m. - 5:30 p.m., Monday - Saturday

The following items are accepted from private Seminole County households/residents for disposal without charge. For information about business/commercial disposal of these or other items, call **407-665-2260**.



Corrugated Cardboard Recycling (*Clean only. Also accepted at Landfill, but will be disposed as household garbage.*)



E-Scrap – End-of-life electronics such as computer components and televisions.



Household Hazardous Waste [HHW] includes:
• Aerosols • Antifreeze • Automotive batteries
• Batteries (rechargeable) • Fluorescent bulbs
• Gasoline • Motor oil (used) • Oil filters (used)
• Paint • Pesticides • Poisons • Propane tanks
• Pool/Lawn chemicals • Solvents/Thinners
• Thermostats & Thermometers (mercury)
All containers must be in good condition with CONTENTS CLEARLY LABELED.



Sharps Program

Sharps Containers can be obtained and disposed at County disposal facilities, any Seminole County/City Fire Station, and several other locations. For specific information, visit on-line or call **407-665-2260**.



Tire Disposal & Scheduled Disposal Events

Tires are accepted for recycling at both County disposal facilities. The Central Transfer Station will accept a maximum of 4 tires per visit; the Landfill accepts a maximum of 10 tires per visit. A \$1.00 fee per tire is charged. *Commercial disposal of tires, or disposal quantities above noted limits are accepted only at the Landfill and are charged at \$100.00 per ton.* **Tire Disposal Events** (up to 5 tires without charge) are offered to Seminole County residents on **October 17, 2015, April 16 and October 15, 2016**. Events are restricted to private household disposal. Business/Commercial disposal of tires will be charged per commercial rates.