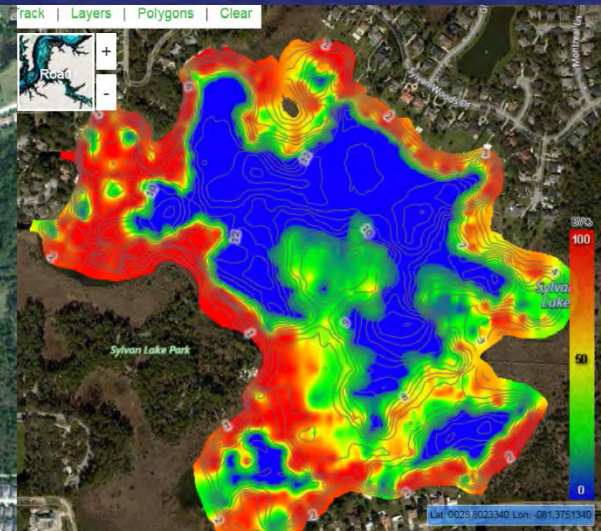
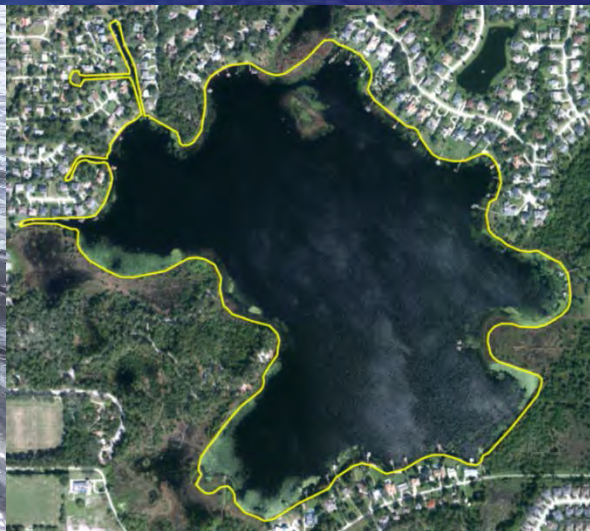




# Sylvan Lake

Community MSBU/LMP Education Meeting

January 16, 2019







# Lake Management Program

## What we do...

# Lake Inspection/Contract Mgmt





# Lake Management Program

- Establish Lake Management Plan with Liaisons
- Technical oversight for Plant Management
- Vendor/Contract Management
- Invasive Shoreline Management
- Shoreline Restoration Workshops





# Current Lake Status



# Canal Status





# Torpedo Grass

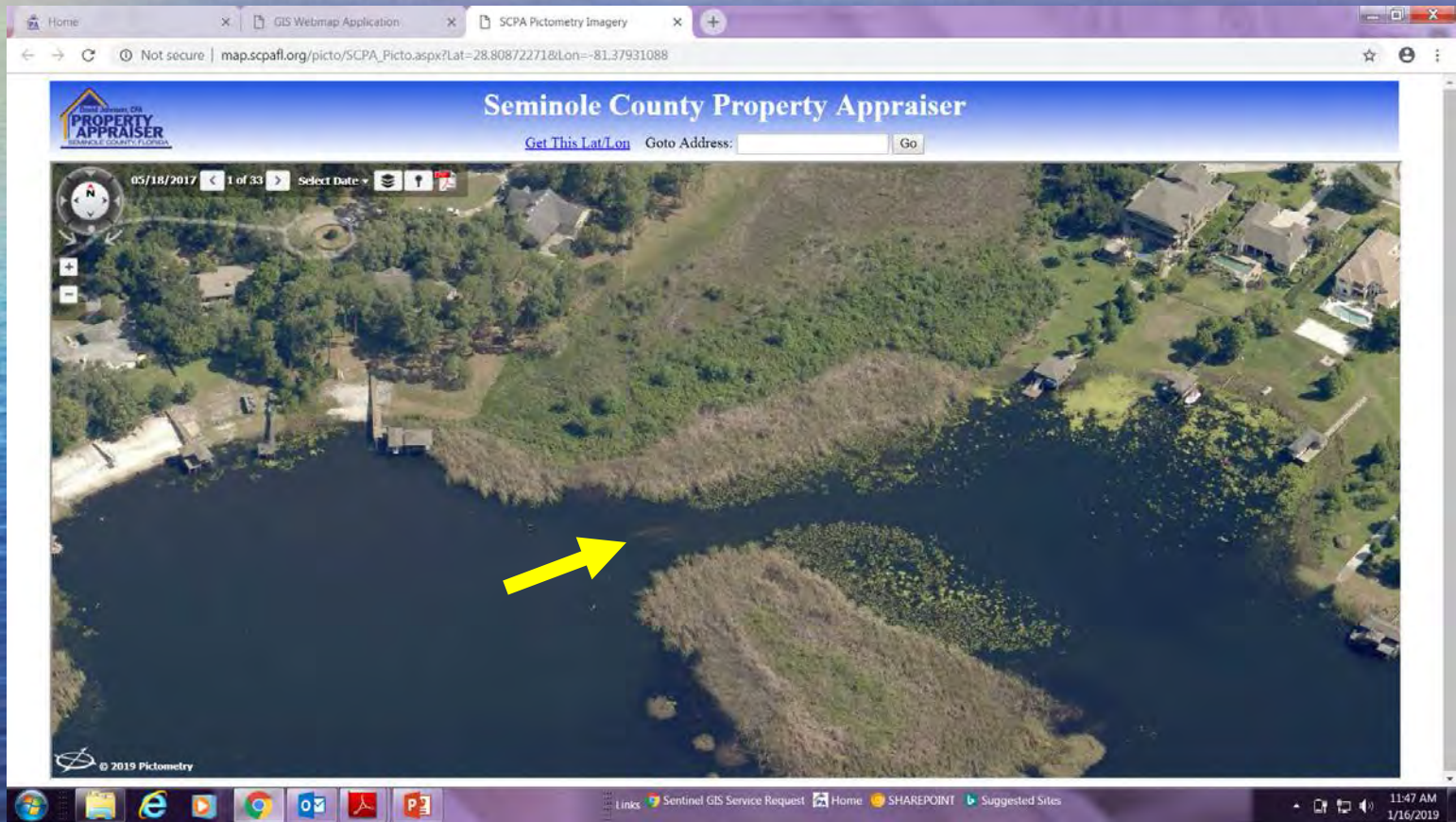








# Cattails





# Native Aquatic Plants



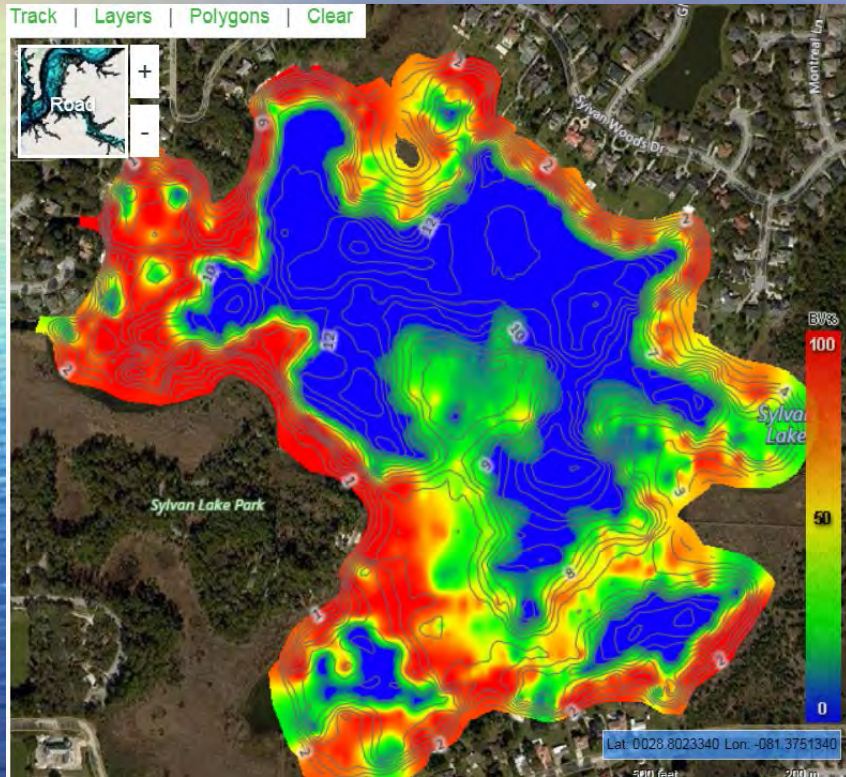


# Native Aquatic Plants





# Hydrilla





# Hydrilla- Biology

- ***Hydrilla verticillata***
  - Exotic- Multiple Origins
  - Florida in 1950s
  - Grows quickly
  - Chokes native species
  - Impedes navigation
  - Can cause fish kills, odors



Hydrilla  
*Hydrilla verticillata*  
Photo by Vic Ramey  
Copyright 1999 Univ. Florida





2011



2012



# Hydrilla Management

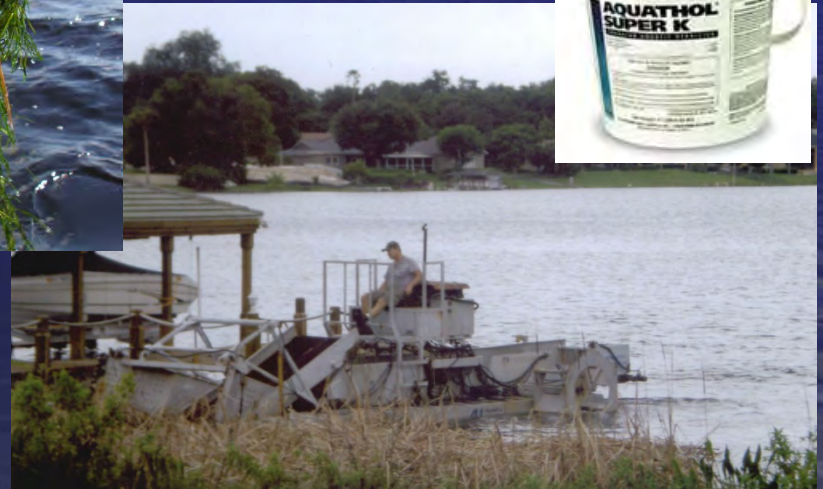


- one square meter of hydrilla can produce **5,000** tubers
- Tuber production in Fall



# Hydrilla Management

## Integrated Management Plan





# Importance of Monitoring





# FWC Permitting







# Community Restoration Event



# Benefits of Native Plants

- Filters pollution runoff BEFORE entering the lake
- Improves the overall ecosystem function of the lake and subsequent waterways it flows into
- Provides habitat for wildlife
- Reduces erosion
- Aids in stabilizing the shoreline
- Occupy space so invasive plants can't invade
- Aesthetics





# Native Aquatic Plants



Pickerelweed



Duckpotato

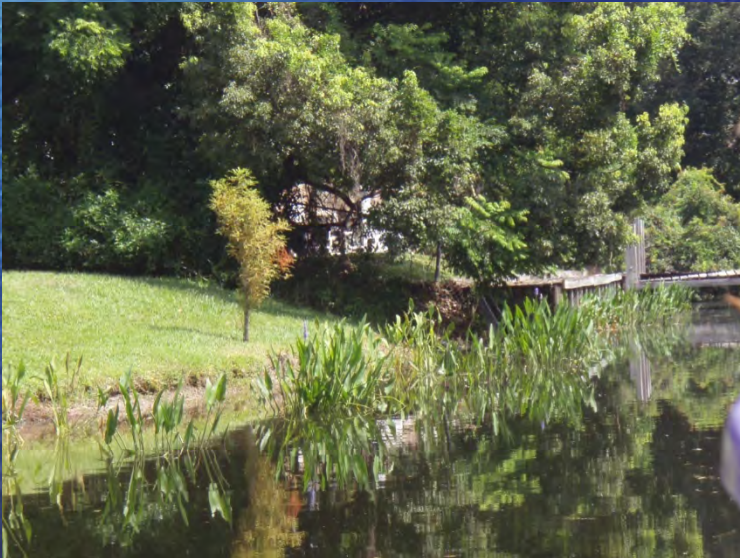


Yellow Cana



# What County Will Provide

- FREE aquatic plants for the sites
- FREE consultation on care for aquatic plants from biologists





# Event Prep & Day

- Volunteers arrive at kickoff location at 9 am and will be divided into groups led by a site captain





# LAKEWATCH Volunteers

