

# SEMINOLE COUNTY NATURAL LANDS RULES OF USE

**Limitation of Liability** - Seminole County does not, by providing any of its Natural Lands for outdoor recreational purposes, extend any assurance that such areas or lands are safe for any purpose. The County will attempt to post known hazardous conditions. Users of Natural Lands take upon themselves the risks inherent in using undeveloped natural properties and the resulting and proximate events and conditions arising from the use of these wild and scenic lands.

**Access** - Natural Lands areas will be open each day from the period between sunrise and sunset unless posted otherwise. Natural Lands may be accessed only at County designated access points at permitted times.

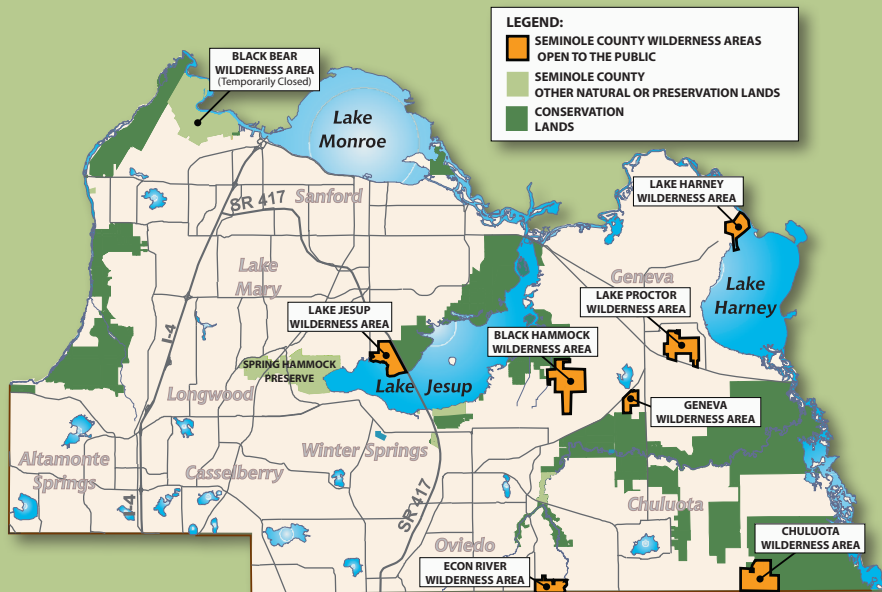
**Take nothing but pictures, kill nothing but time, leave nothing but footprints.** All plants and animals on Natural Lands are protected. It is unlawful to remove or destroy plants or to remove, destroy or harass animals.

**Pets** - Domestic animals are allowed on Natural Lands provided they are leashed at all times.

**Prohibited Activities** - The following activities are prohibited on Natural Lands except where special approval has been granted by permit from Seminole County or in specific designated areas: Hunting, swimming, camping, waste disposal, possession of firearms, destruction of property, posting of handbills, ignition of fires, introduction of plants or animals, operation of motorized vehicles, public disturbance, alcoholic beverages, sales or concessions, construction and all other uses not specifically referenced.

**In order to increase your chances of viewing wildlife, please remember to pack out all trash/ waste, keep pets on a leash at all times and enjoy the natural surroundings quietly.**

## VISIT OUR OTHER WILDERNESS AREAS!



For more information on this property or the Seminole County Natural Lands Program, call (407) 349-0959 or visit our Web site at: [www.seminolecountyfl.gov/natland](http://www.seminolecountyfl.gov/natland)



# Lake Proctor Wilderness Area

Leisure Services Department Greenways & Natural Lands



It Starts  
in Parks

SEMINOLE COUNTY  
NATURAL LANDS PROGRAM  
920 E. State Road 46 • Geneva, FL 32732



# WELCOME TO THE Lake Proctor Wilderness Area

Explore One of Seminole County's Naturally Beautiful Places!

The Lake Proctor Wilderness Area (LPWA) is a 475 acre site located in northeast Seminole County, east of the town of Geneva and west of Lake Harney. This site contains a diverse collection of native plant communities and wildlife and helps protect important recharge areas for the Geneva Bubble (local aquifer).

The trail system at the LPWA consists of one main loop trail (2.6 miles) blazed in red, and three side trails blazed in white (.45 miles), blue (.6 miles) and yellow (1.6 miles). These trails will take you through pine flatwoods, sandhill and beautiful oak hammocks, and offer a scenic look at Lake Proctor. In an effort to protect the resources of this relatively small wilderness area the trail system is limited to hikers, bikers and local equestrians.

Please remember all plants and animals are protected and no hunting, collection or harassment of any wildlife is permitted. No motorized vehicles are allowed. Please remember to be as quiet as possible, keep pets on a leash at all times, pack out any trash/ pet waste and be courteous to other visitors. Please abide by these policies so we can continue to allow the use of these natural areas. **Enjoy your visit!**

Seminole County Natural Lands offers several exciting programs for you & your family:

- Eco Adventures Series • Go Green Series • Native Florida Series • Eco Camp
- Eco Adventures for Children • Environmental Education for schools • Guided Hikes
- Open House at the Ed Yarborough Nature Center

Get more info at: [www.seminolecountyfl.gov/leisure/natland/](http://www.seminolecountyfl.gov/leisure/natland/) or by calling 407-349-0959.

## RECREATIONAL OPPORTUNITIES



HIKING



PHOTOS



FISHING



BIRD WATCHING



EQUESTRIANS

## FAUNA YOU COULD SEE ON THE TRAIL



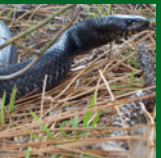
ALLIGATOR



ANHINGA



BALD EAGLE



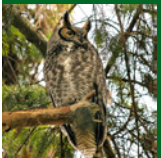
EASTERN  
INDIGO SNAKE



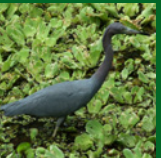
GREY FOX



GREAT EGRET



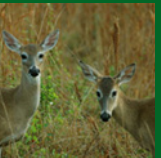
GREAT HORNED  
OWL



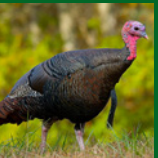
LITTLE BLUE  
HERON



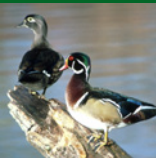
DUSKY PIGMY  
RATTLESNAKE



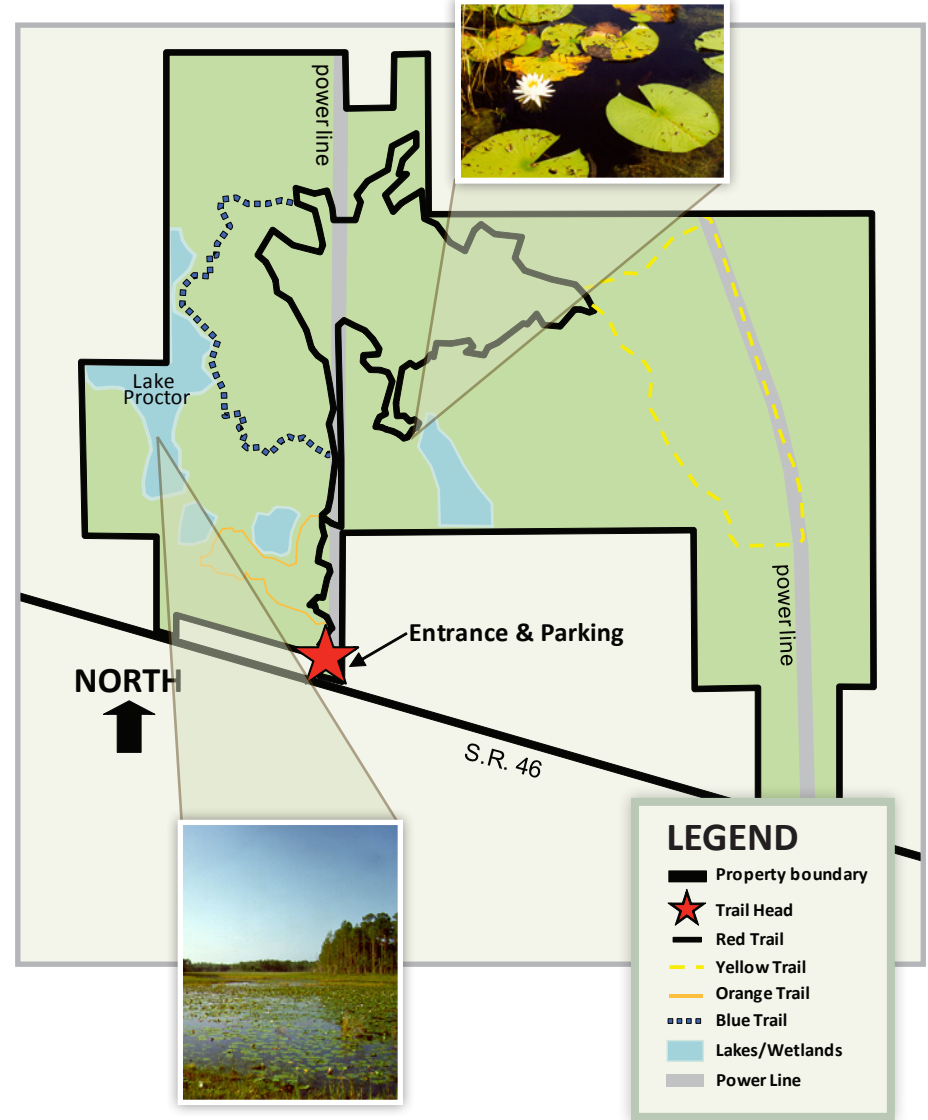
WHITE-TAILED  
DEER



WILD TURKEY



WOOD DUCK



For your safety and the protection of resources please stay on the designated trail system.