

# SEMINOLE COUNTY LEISURE GUIDE

PARKS AND RECREATION · GREENWAYS AND NATURAL LANDS · SEMINOLE COUNTY PUBLIC LIBRARY  
MUSEUM OF SEMINOLE COUNTY HISTORY · EXTENSION SERVICES

SUMMER  
2024



SEMINOLE COUNTY  
FLORIDA'S NATURAL CHOICE





# TABLE OF CONTENTS



**5**  
Greenways &  
Natural Lands



**4**  
Museum of  
Seminole County  
History



**6**  
Seminole  
County  
Public Library



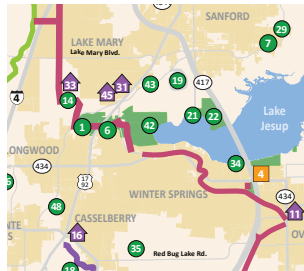
**10**  
UF/IFAS  
Extension  
Services



**12**  
Seminole County  
in Photos



**9**  
Parks &  
Recreation



**14** County Map



**16** Facility Rentals



**18** Programs

## ICONS

Use the icons to help you identify our exciting programs by categories



**ENVIRONMENTAL**



**FREE**



**WELLNESS**

*THIS GUIDE TO PARKS AND RECREATION COVERS ACTIVITIES AND PROGRAMS FROM MAY THROUGH SEPTEMBER 2024*





**OUR MISSION**

Enriching lives through outstanding cultural, educational, environmental and recreational experiences

**OUR VISION**

To be a nationally recognized agency for delivering excellence in leisure services

**OUR VALUES**

Achievement - A sense of community - Conservation of our natural treasures - Good health - Ties to our heritage - A connection to nature - Economic development - Seminole County's future

**CONTACT SEMINOLE COUNTY GOVERNMENT**

**PARKS AND RECREATION**

- Main Office.....(407) 665-2001
- Greenways and Natural Lands.....(407) 665-2001
- UF/IFAS Extension - Seminole County.....(407) 665-5560
- Museum of Seminole County History.....(407) 665-2489

**SEMINOLE COUNTY PUBLIC LIBRARY**

- Central Branch Library.....(407) 665-1500
- East Branch Library.....(407) 665-1560
- North Branch Library.....(407) 665-1620
- Northwest Branch Library.....(407) 665-1640
- West Branch Library.....(407) 665-1670

**ACTIVE PARKS**

- Red Bug Lake Park.....(407) 665-2190
- Sanlando Park.....(407) 665-2100
- Seminole County Softball Complex.....(407) 665-1990
- Boombah Soldiers Creek Park.....(407) 665-2199
- Boombah Seminole County Sports Complex.....(407) 665-2050
- Sylvan Lake Park.....(407) 665-2180

**Find disaster preparedness information and sign up for emergency alerts at [PrepareSeminole.org](http://PrepareSeminole.org)**

**ACCESSIBILITY**

Persons with disabilities needing assistance to participate in any program, event, or service should contact the Seminole County ADA Coordinator (at least 48 hours in advance) at 407-665-7940.



**BOARD OF COUNTY COMMISSIONERS**



**Jay Zembower**  
*Chairman, District 2*



**Andria Herr**  
*Vice-Chair, District 5*



**Bob Dallari**  
*District 1*



**Lee Constantine**  
*District 3*



**Amy Lockhart**  
*District 4*





# MUSEUM OF SEMINOLE COUNTY HISTORY

The Museum is open Tuesday–Saturday, 10:00 a.m.–5:00 p.m.

Admission is \$3 for adults, \$1 for students, seniors, and military, plus tax. Children under 4 years are free.

## EVENTS

### The Great Adventure of Seminole County

Join the quest this summer when participants explore the Seminole County Library system and museums as part of the Great Adventure of Seminole County Scavenger Hunt. Find out how to get started at any of the five Seminole County library branches and begin your journey. Solve puzzles, crack codes, and explore historic sites to earn raffle tickets and a Great Adventure Badge! All raffle tickets must be submitted by August 3.

**Dates:** Friday, May 24–Saturday, August 3

**Cost:** Free with your library card



### History Camp

Summer Camp registration is open! This year's theme is "Adventures in Boardgaming,"

where participants ages 8-16 can explore the evolution of games from their earliest origins in the ancient world to modern Eurogames and tabletop role-playing games. The camp will last four days from 9 a.m. to 3 p.m. Campers are advised to pack their own lunch.

**Tween Camp (Ages 8–12):**

**Dates:** Tuesday, July 9–Friday, July 12

**Cost:** \$115

**Teen Camp (Ages 12–16):**

**Dates:** Tuesday, July 16–Friday, July 19

**Cost:** \$125

### The Menéndez Expedition—Conquistadors in Florida

In September of 1566, between quelling rebellions and mediating the hostilities of native Floridians, Pedro Menéndez de Avilés and his men paddled up the St. Johns River in dugout canoes armed with crossbows to try and find its origin point. Join us for a living history encampment to commemorate the



Learn from soldiers and Seminoles at the Menéndez Expedition demonstration.

expedition, one of the earliest attempts by Europeans to explore this part of Florida. Museum admission will be free for Seminole County's Museum Week! For school day, call to reserve your tour spot at 407-665-2489 or email the coordinator at [blloyd@seminolecountyfl.gov](mailto:blloyd@seminolecountyfl.gov).

**Date:**

School Day: Friday, September 27, 9 a.m.–3 p.m.

Public Day: Saturday, September 28, 10 a.m.–4 p.m.

**Cost:** Free

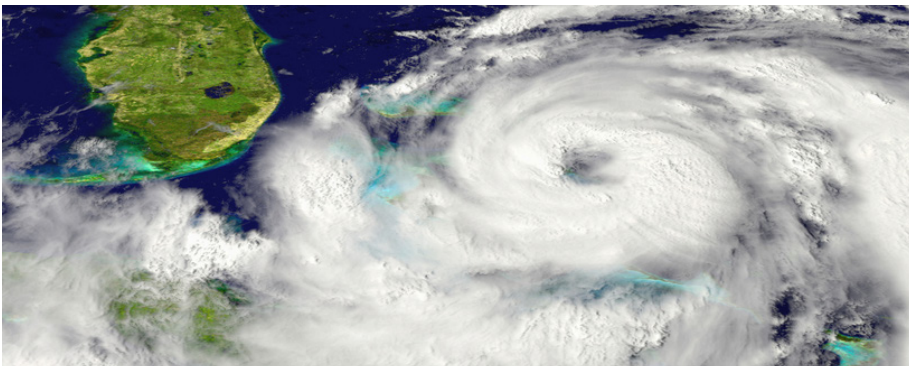
## EXHIBIT

### DISASTER!

Disaster can strike at any moment, and in many ways! From the Great Fire of 1887 to the COVID-19 pandemic, explore how Central Florida and Seminole County have dealt with the extreme natural disasters, including diseases, hurricanes, and even a plague of rats. Together with the Seminole County Emergency Operations Center, discover the depths of DISASTER, how we handled it then and the probability of experiencing the occurrence again.

**Dates:** Saturday, June 1–Saturday, November 16

**Cost:** General Admission



## MUSEUM RESOURCES

### Tours and Programs

Free guided tours of the Museum are available with a reservation.

The Museum has curriculum-based special programs for schools, homeschool groups, and other organizations, from pottery workshops highlighting native cultures to Industrial Period cattle branding. School groups can take a field trip to the Museum or host programming in-school. Call the Museum at least two weeks in advance of your requested date to schedule a program.

### Research

The Museum has an extensive collection of reference materials freely available to the public during regular scheduled Museum hours. Reference materials include local newspapers from 1908 forward, assorted City directories, reference books and some Seminole family histories.

Call to make a research appointment. Admission is waived for researchers with an appointment.



# GREENWAYS AND NATURAL LANDS

*Pre-registration is required. Register online at [recreation.seminolecountyfl.gov](https://recreation.seminolecountyfl.gov) or by phone at 407-665-2211. All classes and events take place at the Ed and Imogene Yarborough Nature Center, 3485 N CR-426, Geneva.*

## FEATURED PROGRAMS AND ACTIVITIES

### Guided Hikes and Special Events

Groups from school-aged scouts to adult social or neighborhood associations can book a **guided private hike** in the Geneva Wilderness Area (or other Seminole County Wilderness Area) with a knowledgeable Natural Lands staff member. Hike takes approximately 2 hours. \$5 per person, 15–25 guests.

Bring Natural Lands to a special event, school night or other celebration. Staff and volunteers will bring an event booth full of fun and exciting items including skulls, pelts, educational materials, and of course, live animals!



**Search for birds on Seminole County trails during a hike.**



**Nature lovers of all ages will enjoy birthday parties and programs at the Nature Center.**

### Birthday Parties

Create a birthday party experience your child will never forget! A trained staff member will welcome your party guests, present an exciting live animal program and take the group for a hike on our 180-acre property. You will have time in the center for exploration and to enjoy your refreshments.

**Ed and Imogene Yarborough Nature Center, 3485 CR-426, Geneva**

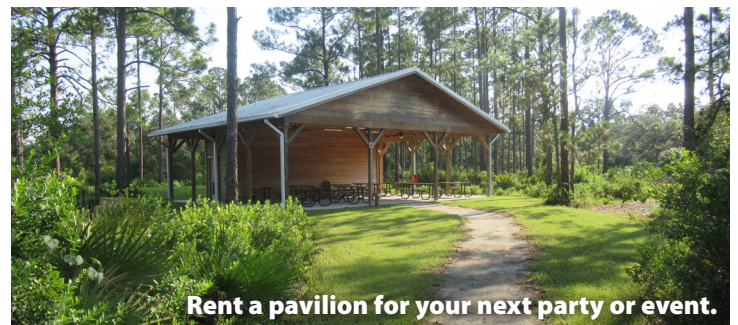
Email Natalie at [nswanson@seminolecountyfl.gov](mailto:nswanson@seminolecountyfl.gov) to coordinate times and availability.

**\$170 includes 3-hour facility rental and Natural Lands host.**

### Pavilions and Campsite Rentals

Save yourself the trouble of party prep and cleanup and reserve a pavilion at a Seminole County Park. Covered pavilions are available to rent at eight different locations. With restrooms and playgrounds close by and a pretty park setting, pavilions are perfect for your next group get-together, family party, or summer BBQ.

Or, spend a night under the stars camping at one of four Seminole County Parks. Hike in to a tucked-away campsite on the Black Bear Wilderness Area trail loop, or bring the comforts of home to a drive-in site at Lake Mills Park. Plan a fall group camping trip with your scout troop or organization at Geneva Wilderness Area, which also includes a large pavilion. See details on page 17.



**Rent a pavilion for your next party or event.**

REGISTER ONLINE AT [RECREATION.SEMINOLECOUNTYFL.GOV](https://recreation.seminolecountyfl.gov)





# SEMINOLE COUNTY LIBRARY

All programs and events listed here are **FREE!** Register and view the full calendar at [seminolelibrary.org](http://seminolelibrary.org).

## “Adventure Begins at Your Library” – Summer Reading (For all ages) ☆

The Library’s 2024 Summer Reading Program starts Friday, May 24. Children, teens, AND adults can participate in special reading challenges and keep reading to earn raffle tickets. The Summer Reading theme this year is “Adventure Begins at Your Library”.

Children and teens receive a **FREE** book to keep, just for signing up. Children earn badges on their lanyard for each challenge completed. Teens can play our weekly reading scratch-off game, where they may instantly win a gift card. Adults can submit brief book reviews to have a chance at winning a gift card too. Weekly prize raffles and grand prize raffles for all the age groups take place at each branch, so stop by your nearest library to join the fun!



## YOUTH PROGRAMS ☆

### Summer Reading Kickoff Parties (Ages 5+)

Celebrate summer with the Library! These Kickoff Parties will feature magic shows ChaChing the Amazing Bunny and James the Unbelievable. Don’t forget to sign up for Summer Reading while you’re here!

#### East Branch (Oviedo)

Wednesday, May 29, 10 a.m.– noon or 1:30–3:30 p.m.

#### West Branch (Longwood)

Thursday, May 30, 2–4 p.m.

#### Central Branch (Casselberry)

Thursday, May 30, 5:30–7:30 p.m.

#### Northwest Branch (Lake Mary)

Friday, May 31, 10 a.m.–noon or 1:30–3:30 p.m.

#### North Branch (Sanford)

Saturday, June 1, 10 a.m.–noon

### Library Explorers: Summer Adventurers’ Guild (Ages 5+)

Are we exploring the great outdoors this week, or outer space? Are we using clues to hunt for

hidden treasure, or doing glow-in-the-dark science experiments? Every week is a new adventure at the library! Visit [seminolelibrary.org](http://seminolelibrary.org) for dates, locations, and more information.

### Summer LEGO Clubs (Ages 5+)

Create, construct, and have fun! Now building weekly during the summer at all five library branches! Visit [seminolelibrary.org](http://seminolelibrary.org) for dates, locations, and more information.

### Summer Chess for Kids & Teens

Learn how to play chess from an expert! Weekly sessions will be held at each branch for seven weeks over the summer. Visit [seminolelibrary.org](http://seminolelibrary.org) for dates, locations, and more information.

### Atlantic Coast Theatre Presents: Winnie-the-Pooh (Ages 5+)

Meet Pooh-Bear, Piglet, Eeyore, Rabbit, Owl, Kanga, and Roo in this charming new adaptation of A.A. Milne’s original 1926 book

filled with music, audience interaction, and stories of friendship.

#### Central Branch (Casselberry)

Monday, June 10, 11 a.m.–noon

#### West Branch (Longwood)

Tuesday, June 18, 3–4 p.m.

#### Northwest Branch (Lake Mary)

Wednesday, June 19, 2–3 p.m. or 4–5 p.m.

#### North Branch (Sanford)

Friday, June 21, 3–4 p.m.

#### East Branch (Oviedo)

Monday, July 8, 4–5 p.m. or 6:30–7:30 p.m.

### Greek Hero Training Camp (Ages 5+ and families)

First, we’ll introduce you to some Greek gods, goddesses, and myths. Then the mythology-inspired games, activities, and crafts will begin!

#### Central Branch (Casselberry)

Saturday, June 8, 2–3:30 p.m.

### Reptile Rumpus (Ages 5+)

Get up close and personal with reptiles! Our



friends from Greenways & Natural Lands will help us learn more about these marvelous creatures before we meet each one.

**East Branch (Oviedo)**

Friday, June 14, 11 a.m.–noon or 1:30–2:30 p.m.

**Northwest Branch (Lake Mary)**

Friday, July 12, 11 a.m.–noon or 1:30–2:30 p.m.

**Central Branch (Casselberry)**

Tuesday, July 16, 3–4 p.m.

**North Branch (Sanford)**

Friday, July 19, 3–4 p.m.

**West Branch (Longwood)**

Tuesday, July 23, 3–4 p.m.

**Summer Sports & Games Party (Ages 5+ and families)** 🍷

You may be watching some special sporting events on TV this summer! We're celebrating summer sports at the library with games and activities of our own.

**West Branch (Longwood)**

Tuesday, June 25, 2–3:30 p.m.

**Campfire Tales (Ages 5+ and families)**

We're camping out at the library! Listen to some slightly spooky stories around the campfire, learn how marshmallows are made, and enjoy other fun, hands-on camping activities.

**North Branch (Sanford)**

Tuesday, June 25, 5:30–7 p.m.

**Crack the Code!**

Drop in for interactive, puzzle-solving fun. This program features secret codes, riddles, brain teasers, and invisible ink!

**Central Branch (Casselberry)**

Saturday, July 20, 2–3 p.m.



Meet real reptiles like this baby alligator during the Reptile Rumpus!



Teens show off their creative costumes during a Cosplay Workshop.

**One-Shot RPG Night for Tweens (Ages 8–12)**

Learn to play a RPG game with the Roll Together Foundation! All materials will be provided; no experience or preparation is necessary. **Pre-registration is required; space is limited!**

**Northwest Branch (Lake Mary)**

Wednesday, June 5, 5:30–7:30 p.m.

**East Branch (Oviedo)**

Monday, June 10, 5:30–7:30 p.m.

Monday, July 1, 5:30–7:30 p.m.

**West Branch (Longwood)**

Tuesday, July 9, 5:30–7:30 p.m.

**North Branch (Sanford)**

Monday, July 29, 5:30–7:30 p.m.

**Cosplay Workshops for Teens (Exclusively for Teens, ages 13+)**

Start work on your epic costume for the end-of-summer Teen Costume Party & Fandom Trivia Night. We'll learn to sew, use makeup, make props out of foam clay, and work with worbla thermoplastic. **Pre-registration and a permission slip is required; space is limited!**

**Central Branch (Casselberry)**

Saturday, June 15, 2–4 p.m.

Foam Clay Prop Making

**Northwest Branch (Lake Mary)**

Saturday, June 22, 2–4 p.m.

Armor & Props with Foam

**West Branch (Longwood)**

Saturday, June 29, 2–4 p.m.

Working with Worbla

**North Branch (Sanford)**

Saturday, July 6, 2–4 p.m.

Sewing Basics

**East Branch (Oviedo)**

Saturday, July 13, 2–4 p.m.

FX Makeup

**Choose Your Own Adventure: House of Danger (Ages 13+)**

You are an aspiring detective and psychic investigator. For weeks, you've had recurring nightmares that you sense might be important. Get to the bottom of these visions as you play through each of the five chapters with other teens!

**Northwest Branch (Lake Mary)**

Monday, June 3, 6–7 p.m.

Monday, June 10, 6–7 p.m.

Monday, June 17, 6–7 p.m.

Monday, June 24, 6–7 p.m.

Monday, July 1, 6–7 p.m.

**Grandparents' Day Storytime & Craft (Ages 2–5 with caregiver)**

Celebrate the special bond between grandparents and grandchildren with stories featuring grandmas and grandpas. Then work on a special craft together with your family!

**Northwest Branch (Lake Mary)**

Friday, September 6, 9:30 a.m. or 11 a.m.

**LIBRARY CONTINUED >**

REGISTER ONLINE AT [SEMINOLELIBRARY.ORG](http://SEMINOLELIBRARY.ORG)





# SEMINOLE COUNTY LIBRARY

All programs and events listed here are **FREE!** Register and view the full calendar at [seminolelibrary.org](http://seminolelibrary.org).

## ADULT PROGRAMS

### Writer's Block

Gain tips to improve your writing. Participate in "group" writing exercises, share written work, and receive feedback. Bring a short (3 to 5 minute) written piece to read aloud.

#### East Branch (Oviedo)

First & Third Mondays, 3–5 p.m.

### Create a Rain Garden

Learn how to create a beautiful rain garden to attract butterflies, birds, and other wildlife.

#### East Branch (Oviedo)

Thursday, May 16, 2–3 p.m.

### The Art of Walt Disney

Get an in-depth look at the art and life of Walt Disney and his contributions to animation, film, theme parks, and the history of Florida. Presented by Keri Watson, Associate Professor of Art History at the University of Central Florida.

#### North Branch (Sanford)

Saturday, May 18, 2–3 p.m.

### Subject to Change Improv Show

Have a laugh-out-loud good time as talented performers present on the spot skits and games.

#### North Branch (Sanford)

Monday, May 20, 6–7:30 p.m.

### X Doesn't Mark the Spot

Dr. Deborah Bauer will help us understand the ins and outs of archaeology – how and why archaeologists do what they do, and the challenges they face.

#### West Branch (Longwood)

Tuesday, June 4, 2–4 p.m.

### Diving into the Past & Future

Join Derek Demeter, scuba diver and director of the Emil Buehler Planetarium at Seminole

State College, to learn about his fossil scuba diving adventures and the prehistoric marine animals he has uncovered while scuba diving in and around Florida.

#### North Branch (Sanford)

Tuesday, June 11, 6–7:30 p.m.

### Mission to Mars

Andy Sokol, Deputy Certification Manager at NASA, will tell us about his work as a Launch Vehicle Systems Engineer for the Mars 2020 Mission, including the Rover, how landing sites are picked, and some details of future missions.

#### North Branch (Sanford)

Monday, June 17, 6–7 p.m.

### Life in the Early 19th Century

Learn what life was like for Florida's early soldiers, pioneers, and Seminoles during the early 19th century. Presented by Bennett Lloyd, Coordinator of the Museum of Seminole County History.

#### West Branch (Longwood)

Wednesday, June 19, 2–3 p.m.

### Travel Journal Book Binding

Learn bookbinding techniques to create your own travel journal.

#### Central Branch (Casselberry)

Thursday, June 20, 6–7:30 p.m.

### The Truth About True Crime

Can you crack the case? Learn how forensic investigations are used to solve crime cases. Presented by Jaqueline Grossi, Senior Crime Analyst with the Seminole County Sheriff's Office.

#### West Branch (Longwood)

Wednesday, June 26, 2–4 p.m.

### Book & Tea Tasting

Come "taste" a variety of different books and genres from our literary buffet as you sample

some tea.

#### Northwest Branch (Lake Mary)

Thursday, July 11, 6:30–7:30 p.m.

### Adventure into the World of Insects

Learn about aquatic bug species, mosquitoes, and the use of pesticides from Elizabeth Stephens, and Kathryn Ruble of the Seminole Education, Restoration, and Volunteer Program, better known as SERV.

#### Central Branch (Casselberry)

Thursday, July 18, 6–7 p.m.

### Dream it Up! 3D Printing & Modeling for Adults

Learn how to use Tinkercad to design your own 3D printed model. We'll print your model for free!

#### East Branch (Oviedo)

Monday, August 5, 6–7:30 p.m.

### Escape the Pharaoh's Tomb

Solve a series of puzzles to help your tour group escape from the tomb of the unknown pharaoh.

#### North Branch (Sanford)

Tuesday, August 27, 5–6 p.m. or 6:30–7:30 p.m.

### Backyard Birding

Learn about ten common Florida birds and how to attract them to your backyard. Presented by Cecilia Carey, Seminole Audubon Society.

#### Central Branch (Casselberry)

Saturday, September 7, 1–2:30 p.m.

### Weiss Financial Ratings Overview

Increase your financial literacy and learn about tools that can help you protect your finances, invest wisely, and grow your wealth.

#### Northwest Branch (Lake Mary)

Monday, September 9, 6–7 p.m.



# PARKS AND RECREATION

## YOUTH PROGRAMS



Youth tennis programs take place year-round at Red Bug Lake Park.

### Tennis Camp ☺

Campers ages 6 and up will learn tennis skills in a fun and dynamic environment from certified tennis professionals. Snacks will be provided but campers should pack a lunch as well as a water bottle, a hat, and sunscreen.

**Days:** Monday – Thursday (Except for Holidays), May 28– August 1

**Times:** Half-Day Camps (8:30 a.m.– 12:30 p.m. or 9:00 a.m.–1:00 p.m. Call Park for Details)

**Locations:** Red Bug Lake Park, Sanlando Park,

and Sylvan Lake Park

**Cost:** \$89 per week

### Junior Development Tennis Camp

Campers enjoy themed activities each week while learning tennis skills.

**Locations:** Sanlando Park, Sylvan Lake Park, Red Bug Lake Park

### Junior Training Tennis Camp

Campers should have completed intermediate lessons and be able to serve, rally, and keep score.

**Location:** Sanlando Park, Red Bug Lake Park

## ADULT PROGRAMS

### Tennis ☺

Tennis is the sport of a lifetime and you are never too old to start. Get some cardiovascular exercise while learning skills and meeting other players. Certified professionals make tennis lessons fun for players of all abilities, from beginners to those looking for strategic competition.

**Levels:**

- **Beginner:** Grips, footwork, forehand and backhand groundstroke's, volleys, and serve will be introduced.
- **Intermediate:** Participants will focus on coordinating movement and balance, hitting the ball with purpose and direction, and improvement of their skill level through strengthening of the fundamentals learned in the beginner level.
- **Advanced:** Emphasis will be on incorporating skills into playing situations. Top spin and slice will be introduced. Drills and playing situations to include ball movement and control of varying ball speeds with shot anticipation.
- **Strategy:** Singles and Doubles. Improve your match results and competitive tennis experience. Doubles to include serve and volley, poaching moving as a team, return strategy and different formations. Learn the different styles of play and find out what type of game you want to perfect!

**Locations:** Red Bug Lake Park, Sanlando Park, Sylvan Lake Park

**Cost:** \$72 for 8 weeks, one hour per week

### Softball ☺

#### Red Bug Lake Park

Registration opens on July 8. League play begins August 19.

#### Seminole County Softball Complex

Registrations opens on July 1. League play begins August 19.

**Cost:** \$485 per team. Free agents needed!



## July is Park and Recreation Month!

Across the nation, local parks agencies are celebrating Park and Recreation Month throughout July. In Seminole County, keep an eye out for events and activities, like the annual Park Poster Challenge. Follow **Seminole County Parks, Recreation and Trails** on Facebook for the latest details.

Parks and recreation promote community health and wellness, increase economic prosperity, and protect precious environmental resources. Seminole County is proud to maintain over 40 parks, trailheads, and natural lands areas, encompassing 7,352 acres.





# UF/IFAS EXTENSION SERVICES

Registration is required for all workshops and events.  
Register at [seminole-extension.eventbrite.com](https://seminole-extension.eventbrite.com).

## WORKSHOPS/EVENTS

### Final Fridays from the Garden



In this free monthly webinar from 12 to 1 p.m., learn how to grow your own food in Florida and attract the right kind of wildlife to your yard.

#### Dates:

June 28: Mushroom Identification

July 26: Palm Trees

August 30: Fall Vegetables

September 27: Happy House Plants

Cost: Free

### First Fridays with Florida First Detector



In this free monthly webinar from 12 to 1 p.m., learn about invasive species in Florida. An invasive species is a non-native species causing harm like economic losses, environmental damage, or human and animal health hazards. The webinars are open to everyone and applicable to professionals and residents alike!

#### Dates:

June 7: Invasive Nematodes

July 5: Invasive Species on Pine

August 2: Invasive Species on Ornamental Plants

Cost: Free

### Stay Healthy Seminole



Let's cook, move, and eat mindfully together, unlocking your fullest potential one delicious step at a time! Each class has a different theme. First, discover the power of herbs to elevate your dishes while enhancing your health and well-being. Then, learn how to make staying active enjoyable and accessible. And with "Mindful Eating", savor each bite with intention, cultivating a deeper connection to your food and body. Join us in embracing a holistic approach to health and happiness.

Location: Online

Dates: Tuesdays, 1–2:30 p.m.

June 4, July 9, August 6, September 10

Cost: \$15 per class

### Spores and More: Mushroom ID Hike



After joining a mushroom ID webinar, take your skills out onto a local Seminole County trail! During our hike, we will collect mushrooms and look for identifying characteristics. Please be ready for possibly rough, muddy terrain, insects, and sun!

Location: Soldiers Creek Park, 2400 Florida 419, Longwood

Date: Saturday, July 11, 9 a.m.–12 p.m.

Cost: \$15

### Palms and Invasive Species Workshop



This workshop with Florida First Detector will focus on palms, palm management, and invasive species that can impact palms. Participants will learn how invasive species arrive in Florida and how to use the distance diagnostic identification service (DDIS) to report suspect invasive species.

Location: UF/IFAS Extension Seminole County, 250 W County Home Rd, Sanford

Date: Friday, June 14, 9 a.m.–3:30 p.m.

Cost: \$25

### Stress Management Series



May is Mental Health Awareness Month. If you have been feeling stressed or anxious lately, join a class to help you reclaim your peace of mind. Through a blend of



Create your own delicious homemade cheese.

mindfulness techniques, relaxation exercises, and personalized coping mechanisms, we'll guide you on a journey to a calmer, more balanced life. Your well-being deserves it.

Location: UF/IFAS Extension Seminole County, 250 W County Home Rd, Sanford

Dates: Mondays, May 6th, 13th, 20th and June 3rd, 12–12:45 p.m.

Cost: \$5 per class

### Cheesemaking: Food Preservation Class



In this hands-on cooking class, you'll learn the basic of cheesemaking and food preservation, including the processes, equipment, and safety techniques needed to create your own delicious homemade mozzarella cheese with pesto sauce.

Location: UF/IFAS Extension Seminole County, 250 W County Home Rd, Sanford

#### Dates:

Wednesday, May 22, 2–3 p.m. OR  
Saturday, May 25, 10–11 a.m.

Cost: \$25

### Healthier Cooking with an Air Fryer and Instant Pot



Learn the basics of healthy cooking in an Air Fryer or Instant Pot. Watch demonstrations and try hands-on recipes for fast, delicious, and nutritious meals.

Location: UF/IFAS Extension Seminole County, 250 W County Home Rd, Sanford

Date: Wednesday, May 8, 2–3 p.m.

Cost: \$15



Collect mushrooms from local trails during Spores and More.



## ServSafe Manager's Exam

UF/IFAS Extension Seminole County is now hosting the ServSafe Manager's Exam for food managers and staff to earn their National Certification. This training class and exam enables food service professionals to offer their customers food that is prepared in a clean and safe environment.

**Location:** UF/IFAS Extension Seminole County, 250 W County Home Rd, Sanford

**Dates:** Thursday, June 20, 8:30 a.m.–5 p.m.  
Thursday, August 5, 8:30 a.m.–5 p.m.

**Cost:** TBD

## Bat House Building Workshop

This virtual workshop will go over a brief review of the bats of Florida and how to build a bat house that will hopefully attract bats in your area. Class is held online on the third Tuesday of the month from 6:30 – 7:00 p.m.

**Cost:** Free

## Beekeeping Workshops

Beekeeping workshops are held the first week of the month. Learn about the legal aspects, costs, and importance of keeping bees, then

dive into the practical aspects of having a hive. During the final in-person workshop, practice lighting a smoker, inspecting a hive, doing a varroa shake, and more.

**Cost:** \$3-5

## Urban Backyard Chicken Class

Curious about keeping chickens and producing your own eggs? The Urban Backyard Chicken Virtual Workshop is held the third Wednesday of each month from 10:00 a.m. to 12:00 p.m. Class is required by some municipalities to obtain their Backyard Chicken permit.

**Cost:** \$5

# 4-H PROGRAMS

## Seminole County 4-H

4-H is the UF IFAS Extension's youth development program as part of Florida 4-H. Inspiring kids through hands-on learning experiences guided by 4-H mentors, youth ages 5 – 18 are welcome to participate in 4-H Clubs, camps, educational events, and career/leadership opportunities throughout the year.

4-H Clubs are led by adult volunteers at times and locations throughout the community, focusing on different skills throughout the year. Find out more about 4-H by emailing [seminole4h@seminolecountyfl.gov](mailto:seminole4h@seminolecountyfl.gov).

## 4-H "Bugging Out" Entomology Camp

During this two-day camp, participants will study insect anatomy and learn how to catch and identify bugs. Each camper will build their

own native bee house and create an insect habitat to take home.

Open to ages 9–12.

**Location:** UF/IFAS Extension Seminole County, 250 W County Home Rd, Sanford

**Dates:** Tuesday–Wednesday, June 25–26, 1:30–4:30 p.m.

**Cost:** \$50; \$25 non-refundable pre-registration deposit required.

## 4-H Teen Entomology Camp

During this three-day camp, teens will learn how to catch, identify, and preserve bugs to start their own collection. Participants will take home pinning equipment and learn how to create an insect habitat.

Open to ages 12–18.

**Location:** UF/IFAS Extension Seminole County,



250 W County Home Rd, Sanford

**Dates:** Wednesday–Friday, June 26–28, 8:30 a.m.–12 p.m.

**Cost:** \$100; \$25 non-refundable pre-registration deposit required.

# ONGOING SERVICES

## Master Gardener Help Desk

A UF/IFAS trained Master Gardener Volunteer is on duty most weekdays from 9:00 a.m. to Noon and 1:00 to 4:00 p.m. to answer your questions and solve your gardening or landscape problems.

You can call, email or come into our office and we will give you free one-on-one help and consultation. or more details call (407) 665-5550 or email [mastergardener@seminolecountyfl.gov](mailto:mastergardener@seminolecountyfl.gov)

## Soil pH Test Drop off Service

Bring in a soil sample from your yard (one cup full) to the UF/IFAS office, anytime Monday through Friday between 8:00 a.m. and 4:00 p.m. Take samples from 5 to 10 areas of the yard, mix them up and scoop one cup for your sample. A Master Gardener will let you know your results within a week. For more details call (407) 665-5550 or email [mastergardener@seminolecountyfl.gov](mailto:mastergardener@seminolecountyfl.gov)

**Cost of test:** \$2 per sample

## Pesticide Testing, Licensing, and CEUs

Pesticide license exams are offered by appointment only.

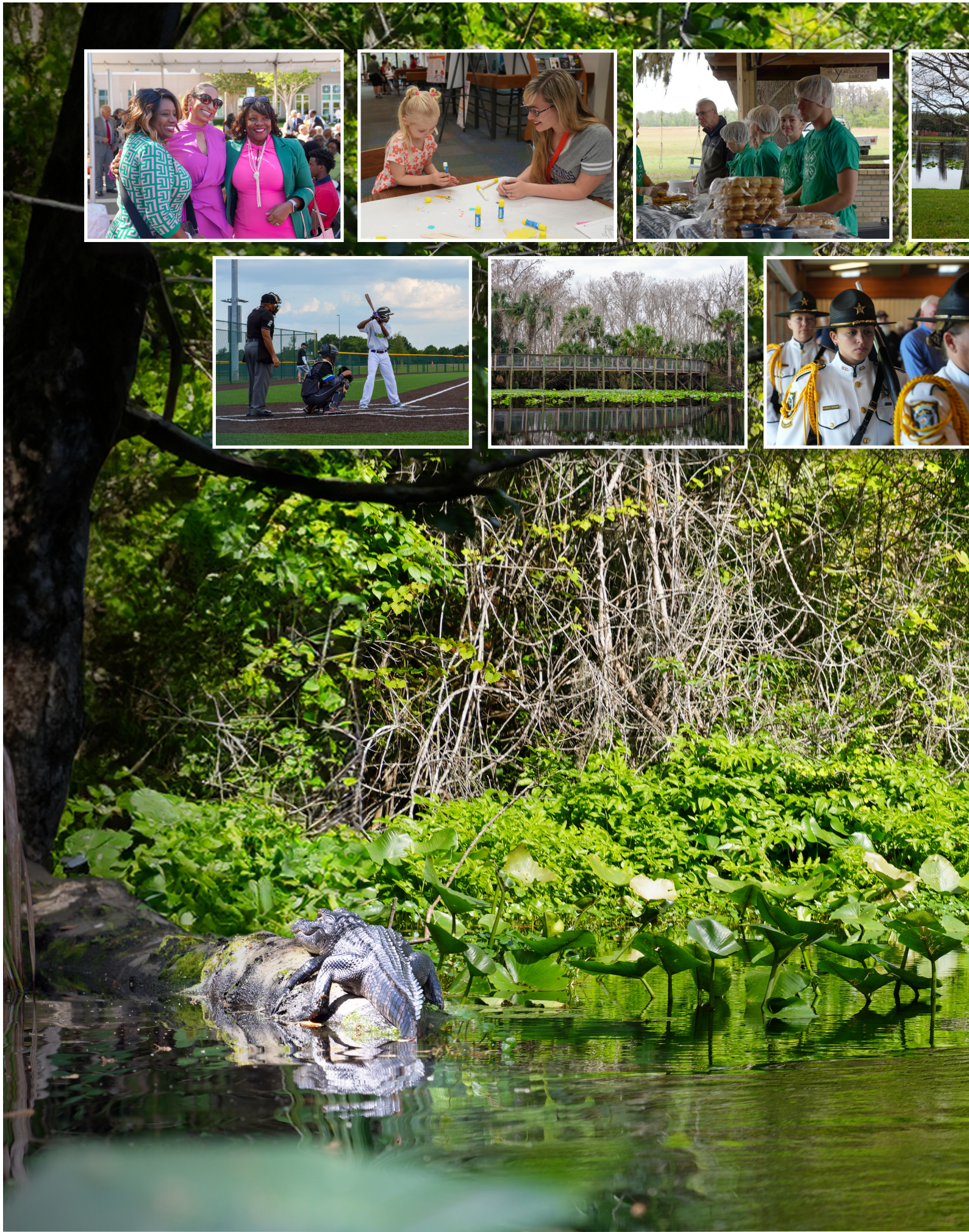
Visit [pesticideexam.ifas.ufl.edu](http://pesticideexam.ifas.ufl.edu) to obtain a voucher and schedule your exam. Contact Morgan Pinkerton at [morgan0402@ufl.edu](mailto:morgan0402@ufl.edu) with questions.

For pesticide CEUs, visit [seminole-extension.eventbrite.com](http://seminole-extension.eventbrite.com) or [facebook.com/UFIFASSeminoleCo](https://www.facebook.com/UFIFASSeminoleCo) for upcoming events.

REGISTER ONLINE AT [SEMINOLECOUNTYFL.GOV/EXTENSION](http://SEMINOLECOUNTYFL.GOV/EXTENSION)







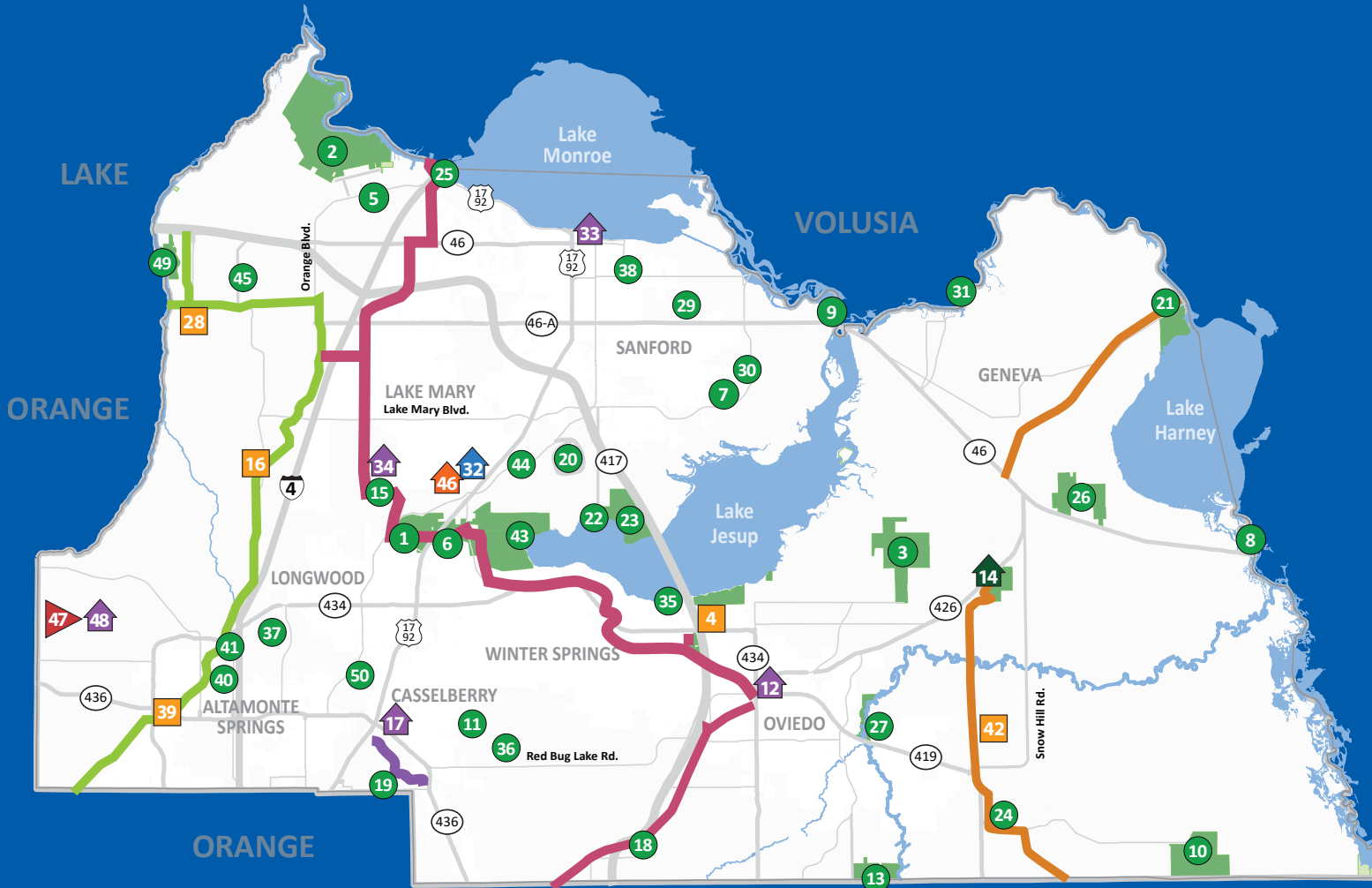








# COUNTY MAP



## LEGEND

### Facilities

- Libraries
- Museum
- UF/IFAS Extension Services
- Parks
- Trailhead
- Golf

### Trails

- Cross Seminole Trail
- Flagler Trail
- Kewannee Trail
- Seminole Wekiva Trail

### Icons

- |                |           |             |                |            |                   |
|----------------|-----------|-------------|----------------|------------|-------------------|
| Accessible     | Biking    | Canoe/Kayak | Golf           | Pavilion   | Softball/Baseball |
| Athletic Field | Boat Ramp | Equestrian  | Hiking/Walking | Playground | Tennis            |
| Basketball     | Camping   | Fishing     | Meeting Space  | Restrooms  | Volleyball        |



- 1 Big Tree Park and Trailhead**  
Open 8 a.m. - Sunset  
761 General Hutchison Parkway, Longwood
- 2 Black Bear Wilderness Area**  
Open daylight hours  
5298 Michigan Avenue, Sanford
- 3 Black Hammock Wilderness Area**  
Open daylight hours  
3276 Howard Avenue, Geneva
- 4 Black Hammock Trailhead**  
Open daylight hours  
1571 E. State Road 434, Winter Springs
- 5 Bookertown Park**  
Open 8 a.m. - Sunset  
4640 Richard Allen Street, Sanford
- 6 BOOMBAH Soldiers Creek Park**  
Open Mon - Fri, 11 a.m. - 10 p.m., Sat 8 a.m. - 10 p.m., Sun 8 a.m. - 8 p.m.  
2400 State Road 419, Longwood
- 7 BOOMBAH Sports Complex**  
Open Mon - Sat 8 a.m. - 10 p.m., Sun 8 a.m. - 8 p.m.  
3450 E. Lake Mary Boulevard, Sanford
- 8 C. S. Lee Park**  
Open 24 hours  
4600 East State Road 46, Geneva
- 9 Cameron Wight Park**  
Open 24 hours  
5502 Old Geneva Road, Sanford
- 10 Chuluota Wilderness Area**  
Open daylight hours  
3895 Curryville Road, Chuluota
- 11 Deer Run Park**  
*(under construction)*  
300 Daneswood Way, Casselberry
- 12 East Branch Library**  
Open Mon - Thurs 9 a.m. - 8 p.m., Fri & Sat 9 a.m. - 5 p.m., Sun 1 p.m. - 5 p.m.  
310 Division Street, Oviedo
- 13 Econ River Wilderness Area**  
Open daylight hours  
3795 Old Lockwood Road, Oviedo
- 14 Geneva Wilderness Area and Ed and Imogene Yarborough Nature Center**  
Open daylight hours  
3501 County Road 426, Geneva
- 15 Greenwood Lakes Park**  
Open 8 a.m. - 9 p.m.  
660 Greenway Boulevard, Lake Mary
- 16 Jones Trailhead**  
Open daylight hours  
2993 Markham Woods Road, Longwood
- 17 Jean Rhein Central Branch Library**  
Open Mon - Thurs 9 a.m. - 8 p.m., Fri & Sat 9 a.m. - 5 p.m., Sun 1 p.m. - 5 p.m.  
215 N. Oxford Road, Casselberry
- 18 Jamestown Park**  
Open 8 a.m. - 9 p.m.  
2135 South Street, Oviedo
- 19 Kewannee Park**  
Open 8 a.m. - Sunset  
1505 Kewannee Trail, Casselberry
- 20 Lake Dot Park**  
Open daylight hours  
100 Lake Dot Drive, Sanford
- 21 Lake Harney Wilderness Area and St. Johns River Trailhead**  
Open daylight hours  
2395 Osceola Fish Camp Road, Geneva
- 22 Lake Jesup Park**  
Open 24 hours  
5951 South Sanford Avenue, Sanford
- 23 Lake Jesup Wilderness Area**  
Open daylight hours  
5951 South Sanford Avenue, Sanford
- 24 Lake Mills Park**  
Open 8 a.m. - Sunset  
1301 Tropical Avenue, Chuluota
- 25 Lake Monroe Wayside Park**  
Open 24 hours  
4150 Northwest U. S. Hwy 17/92, Sanford
- 26 Lake Proctor Wilderness Area**  
Open daylight hours  
920 State Road 46, Geneva
- 27 Little Big Econ Canoe Launch**  
Open daylight hours  
3799 Willingham Road, Oviedo
- 28 Markham Trailhead and Mountain Bike Skills Course**  
Open daylight hours  
8515 Longwood Markham Road, Sanford
- 29 Midway Park**  
Open daylight hours  
2045 Hurston Avenue, Sanford
- 30 Moores Station Road Fields**  
*Use by reservation only.*  
Open 8 a.m. - 8 p.m.  
841 Cameron Avenue, Sanford
- 31 Mullet Lake Park**  
8 a.m. - Sunset  
2368 Mullet Lake Park Road, Geneva
- 32 Museum of Seminole County History**  
Open Tues - Sat, 10 a.m. - 5 p.m.  
300 Eslinger Way, Sanford
- 33 North Branch Library**  
Open Mon - Thurs, 9 a.m. - 8 p.m., Fri & Sat 9 a.m. - 5 p.m., Sun 1 p.m. - 5 p.m.  
150 N Palmetto Avenue, Sanford
- 34 Northwest Branch Library**  
Open Mon - Thurs, 9 a.m. - 8 p.m., Fri & Sat 9 a.m. - 5 p.m., Sun 1 p.m. - 5 p.m.  
580 Greenway Boulevard, Lake Mary
- 35 Overlook Park**  
Open daylight hours  
1998 Spring Avenue, Oviedo
- 36 Red Bug Lake Park**  
Open Mon - Fri, 8 a.m. - 10 p.m., Sat & Sun 8 a.m. - 8 p.m.  
3600 Red Bug Lake Road, Casselberry
- 37 Rolling Hills Community Park**  
*(under construction)*  
1749 Art Hagen Place, Longwood
- 38 Roseland Park**  
Open 8 a.m. - 9 p.m.  
1898 Roseberry Lane, Sanford
- 39 San Sebastian Trailhead**  
Open daylight hours  
371 San Sebastian Prado, Altamonte Springs
- 40 Sanlando Park**  
Open Mon - Fri 8 a.m. - 10 p.m., Sat & Sun 8 a.m. - 8 p.m.  
401 W Highland Street, Altamonte Springs
- 41 Seminole County Softball Complex**  
Open Mon - Fri, 11 a.m. - 10 p.m., Sat 8 a.m. - 10 p.m. Sun 8 a.m. - 8 p.m.  
2200 North Street, Altamonte Springs
- 42 Snow Hill Trailhead**  
Open daylight hours  
3290 Snow Hill Road, Chuluota
- 43 Spring Hammock Preserve**  
Open 8 a.m. - Sunset  
State Road 419, Longwood
- 44 Sunland Park**  
Open 8 a.m. - 10 p.m.  
180 Collins Drive, Sanford
- 45 Sylvan Lake Park & Sports Training Center**  
Open Mon - Fri, 8 a.m. - 10 p.m., Sat & Sun 8 a.m. - 8 p.m.  
845 Lake Markham Road, Sanford
- 46 UF/IFAS Extension Seminole County Services & Teaching Gardens**  
Open Mon - Fri, 8 a.m. - 5 p.m.  
250 West County Road, Sanford
- 47 Wekiva Golf Club**  
Open 6 a.m. - 7 p.m.  
4100 Wekiva Club Ct, Longwood
- 48 West Branch Library**  
Open Mon - Thurs, 9 a.m. - 8 p.m., Fri & Sat 9 a.m. - 5 p.m., Sun 1 p.m. - 5 p.m.  
245 N. Hunt Club Boulevard, Longwood
- 49 Wilson's Landing Park**  
Open daylight hours  
379 Malekean Trail, Sanford
- 50 Winwood Park**  
Open 8 a.m. - 9 p.m.  
931 Morse Street, Altamonte Springs



# FACILITY RENTALS

## COURTS & FIELDS

### Athletic Fields

Moore Station Road Field, Red Bug Lake Park, Sylvan Lake Park, Soldiers Creek, Seminole County Softball Complex, Seminole County Sports Complex

*(Turf fields may be closed for repairs or sodding)*

8:00 a.m. – 5:00 p.m.: \$30.00/hr

5:00 – 10:00 p.m.: \$40.00/hr

### Basketball Courts

Red Bug Lake Park, Sanlando Park

Walk-on play is free of charge; priority is given to users with a reservation. Fees for basketball court usage are only charged for reservations made in advance. Fees are due in advance of rental.

Court Fee: \$6.00/hr per court

### Racquetball Courts

Red Bug Lake Park, Sanlando Park, Sylvan Lake Park

Court Fee: \$6.00/hr per court

### Roller Hockey Courts

Greenwood Lakes Park

Open-skate is free of charge; priority use is given to reserved users. Fees for rink usage are charged in advance for reservations. Reservations and payment can also be made at Sylvan Lake Park.

8:00 a.m. – 5:00 p.m.: \$16.00/hr

5:00 – 10:00 p.m.: \$32.00/hr

### Pickleball Courts

Red Bug Lake Park

8:00 a.m. – 5:00 p.m.: \$4.00/hr per court

5:00 – 10:00 p.m.: \$6.00/hr per court

### Bocce Ball Court

Red Bug Lake Park

Free of charge; Balls available in-office. First come, first serve. Open dawn to dusk.



Seminole County Softball Complex

### Sand Volleyball Courts

Red Bug Lake Park

Walk-on play is available free of charge; priority is given to reserved users. Fees for court usage are only charged for reservations made in advance. Fees are due in advance of rental.

8:00 a.m. – 5:00 p.m.: \$30.00/hr

5:00 – 10:00 p.m.: \$40.00/hr

### Pentaque Courts

Sylvan Lake Park

Courts may be reserved with the rental of an adjacent pavilion. Courts can be used for tournaments or general play. For more information on usage, please contact Sylvan Lake Park at (407) 665-2180.

### Tennis Courts

Greenwood Lakes Park, Red Bug Lake Park, Sanlando Park, Sylvan Lake Park

Courts can be reserved an advance at all parks; reservations for Greenwood Lakes Park must be made and paid for at Sylvan Lake Park.

Court Fee 8:00 a.m. – 5:00 p.m.: \$4.00/hr

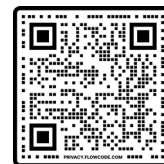
Court Fee 5:00 p.m. – 10:00 p.m.: \$6.00/hr

Ball Machine Courts\*: \$11.00/hr

\* Red Bug Lake Park, Sanlando Park, and Sylvan Lake Park only

**Check Availability or Reserve Online at  
RECREATION.SEMINOLECOUNTYFL.GOV**

*Listed fees do not include applicable sales tax*





# CAMPING

## Group Camping

\$30.00/night

Mullet Lake Park

Lake Mills Park

### Geneva Wilderness Area

Group camping site available for up to 40 people; includes a large pavilion, restrooms and barbecue grill. For more information, please call the Geneva Wilderness Area at (407) 665-2211.

## Primitive Camping

\$15.00/night

### Geneva Wilderness Area

Campsites are hike-in only with NO vehicle access

### Lake Mills Park and Mullet Lake Park

Campsites are drive-in with one vehicle per campsite and overflow parking available.

### Black Bear Wilderness Area

Hike-in only primitive campsite for up to 4 people; campsite is approximately 3 miles from parking. No bathrooms or running water.

# OTHER FACILITIES

## Pavilions

Bookertown Park, Geneva Wilderness Area, Greenwood Lakes Park, Kewannee Park, Lake Mills Park, Red Bug Lake Park, Sanlando Park, Wilson's Landing Park, Winwood Park

Large Pavilions: \$60.00/half day, \$100.00/full day

Small Pavilions: \$40.00/half day, \$60.00/full day

Large Pavilion at Geneva Wilderness Area includes:

Barbeque Grill, Smoker and restrooms

For more information, please call the Geneva Wilderness Area at (407) 665-2211



## Meeting Rooms

Seminole County Softball Complex, Soldier's Creek Park, Seminole County Sports Complex

\$16.00 - \$32.00/hr, based on facility.

Contact your desired location for more information.

## Ed and Imogene Yarborough Nature Center

Geneva Wilderness Area

The Ed and Imogene Yarborough Nature center offers a unique venue to host meetings, birthday parties, programs or retreats for up to 40 guests. Surrounded by 180 acres of Florida's natural beauty, this facility is air-conditioned and includes a small kitchen, 85-inch TV with laptop connection, restrooms and live animal displays that highlight the diverse ecology of Central Florida. Nature-based programs and activities can also be provided for your event.

Reservations begin at \$32.00/hr.

For more information, please call the Geneva Wilderness Area at (407) 665-2211 or email [nswanson@seminolecountyfl.gov](mailto:nswanson@seminolecountyfl.gov).



## PARTICIPANT & SPECTATOR CODE OF CONDUCT

1. Demonstrate good sportsmanship. Always be respectful toward players, coaches and officials.
2. Act appropriately; do not taunt or disturb other fans; Enjoy the game together.
3. Cheer in a positive manner and encourage fair play.
4. Be supportive after the game - win or lose. Recognize good effort, teamwork and sportsmanship.
5. Follow facility guidelines, help keep the facility safe and clean, be respectful of the facility at all times.

## VIDEO & PHOTO POLICY

Occasionally, video and photos may be taken of participants in programs, classes or activities at our facilities. Please be aware that these photos may be used in future program promotional materials.





# PROGRAMS

## SCHOLARSHIP SEMINOLE

The Seminole County Parks and Recreation Department is committed to providing quality recreational opportunities to all residents of the county regardless of their economic status. Scholarships apply to youth programs managed by Seminole County Parks and Recreation only. Scholarships do not apply to programs that are contracted with outside providers.

## MEMORIAL PROGRAM

Seminole County Parks and Recreation's Memorial Program allows those seeking to honor a loved one, to memorialize those special people and events through the installment of a memorial bench or placing a memorial stone at one of our existing trees. We have designated trees in our active parks and along the paved trails available through our Memorial Tree Program. Once you choose the Tree you would like to adopt, we order the memorial stone and place it at the base of your tree. Parks that are available are Red Bug Lake Park, Sylvan Lake Park, Sanlando Park and Seminole Softball Complex.



## ADOPT – A – PARK

Groups and organizations interested in demonstrating community pride and making a positive impact in their community are encouraged to participate in Seminole County Parks and Recreation's Adopt-A-Park program. Groups involved with this program assist with the monitoring, clean-up, and enhancement of Seminole County properties, including parks, trails, trailheads, and wilderness areas.



## VOLUNTEER WITH PARKS AND RECREATION

Volunteering can be the most rewarding and enjoyable experience for people of all ages and walks of life! We invite individuals and community groups to transform their passions into action. Volunteer opportunities include: assistance at parks, trail clearing, invasive species management, tour docents, internships, and much more.

*For more information, please call (407) 665-2170 or visit [seminolecountyfl.gov/parks](http://seminolecountyfl.gov/parks)*

## COMMUNITY PARTNERS

Seminole County Parks and Recreation is grateful for the business and nonprofit partners who help enhance the programs and services provided to local residents and visitors.



B.R.A.N.C.H., INC. EDR TECHNOLOGIES, INC. INVINCIBLE TROOPS SCOUT TROOP 631 HEALING HANDS BY TERESA, RN, LMT



**FOLLOW US ON SOCIAL MEDIA**



[facebook.com/seminolecountyleisure](https://facebook.com/seminolecountyleisure)



[instagram.com/seminolecountyfl](https://instagram.com/seminolecountyfl)



[twitter.com/seminolecounty](https://twitter.com/seminolecounty)



# CALENDAR HIGHLIGHTS



## MAY

- 8 **Healthier Cooking with an Air Fryer and Instant Pot**  
*UF/IFAS Extension Seminole County, 2–3 p.m. | p. 10*
- 16 **Create a Rain Garden**  
*East Branch (Oviedo), 2–3 p.m. | p. 8*
- 18 **The Art of Walt Disney**  
*North Branch (Sanford), 2–3 p.m. | p. 8*

## JUNE

- 11 **Diving into the Past & Future**  
*North Branch (Sanford), 6–7:30 p.m. | p. 8*
- 25  **Summer Sports & Games Party**  
*West Branch (Longwood), 2–3:30 p.m. | p. 7*
- 25-26  **4-H “Bugging Out” Entomology Camp**  
*UF/IFAS Extension Seminole County, 1:30–4:30 p.m. | p. 11*
- 26-28  **4-H Teen Entomology Camp**  
*UF/IFAS Extension Seminole County, 8:30 a.m.–12 p.m. | p. 11*

## JULY

- 9-12  **History Camp: Tweens**  
*Museum of Seminole County History, 9 a.m.–3 p.m. | p. 4*
- 11 **Spores and More: Mushroom ID Hike**  
*UF/IFAS Extension Seminole County, 9 a.m.–12 p.m. | p. 10*
- 16-19  **History Camp: Teens**  
*Museum of Seminole County History, 9 a.m.–3 p.m. | p. 4*

## AUGUST

- 5 **Dream it Up! 3D Printing & Modeling for Adults**  
*East Branch (Oviedo), 6–7:30 p.m. | p. 8*
- 27 **Escape the Pharaoh’s Tomb**  
*North Branch (Sanford), 5–6 p.m. or 6:30–7:30 p.m. | p. 8*

## SEPTEMBER

- 6  **Grandparents’ Day Storytime & Craft**  
*Northwest Branch (Lake Mary), 9:30 or 11 a.m. | p. 7*
- 7 **Backyard Birding**  
*Central Branch (Casselberry), 1–2:30 p.m. | p. 8*
- 9 **Weiss Financial Ratings Overview**  
*Northwest Branch (Lake Mary), 6–7 p.m. | p. 8*
- 27-28  **The Menéndez Expedition**  
*Museum of Seminole County History | p. 4*





Tennis camp for ages 6 and up  
is available all summer long at  
three Seminole County parks.



SEMINOLE COUNTY

FLORIDA'S NATURAL CHOICE