

SEMINOLE COUNTY NATURAL LANDS RULES OF USE

Limitation of Liability - Seminole County does not, by providing any of its Natural Lands for outdoor recreational purposes, extend any assurance that such areas or lands are safe for any purpose. The County will attempt to post known hazardous conditions. Users of Natural Lands take upon themselves the risks inherent in using undeveloped natural properties and the resulting and proximate events and conditions arising from the use of these wild and scenic lands.

Access - Natural Lands areas will be open each day from the period between sunrise and sunset unless posted otherwise. Natural Lands may be accessed only at County designated access points at permitted times.

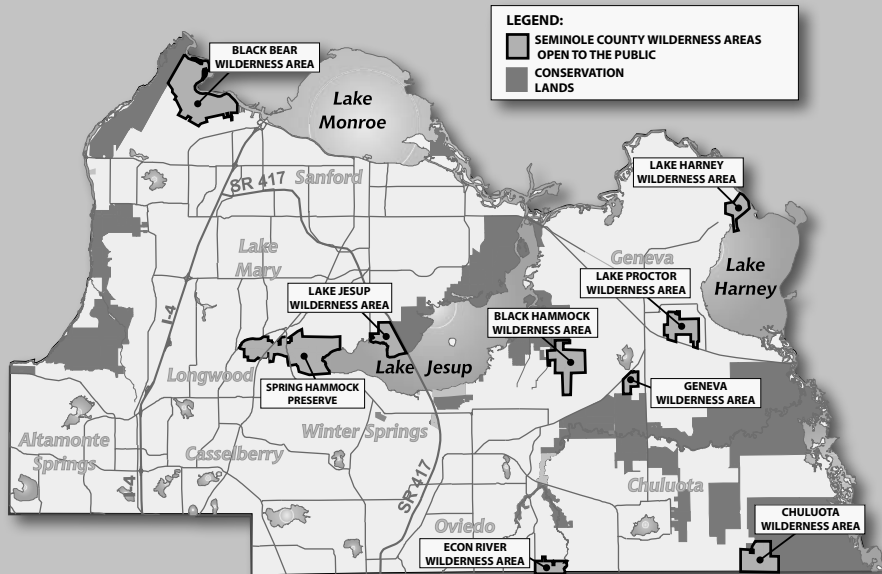
Take nothing but pictures, kill nothing but time, leave nothing but footprints. All plants and animals on Natural Lands are protected. It is unlawful to remove or destroy plants or to remove, destroy or harass animals.

Pets - Domestic animals are allowed on Natural Lands provided they are leashed at all times.

Prohibited Activities - The following activities are prohibited on Natural Lands except where special approval has been granted by permit from Seminole County or in specific designated areas: Hunting, swimming, camping, waste disposal, destruction of property, posting of handbills, ignition of fires, introduction of plants or animals, operation of motorized vehicles, public disturbance, alcoholic beverages, sales or concessions, construction and all other uses not specifically referenced.

In order to increase your chances of viewing wildlife, please remember to pack out all trash/ waste, keep pets on a leash at all times and enjoy the natural surroundings quietly.

VISIT OUR OTHER WILDERNESS AREAS!



For more information on this property or the Seminole County Natural Lands Program, call (407) 349-0959 or visit our Web site at: www.seminolecountyfl.gov/naturallands



Chuluota Wilderness Area

Leisure Services Department
Greenways & Natural Lands



It Starts
in Parks

SEMINOLE COUNTY
NATURAL LANDS PROGRAM
3800 Curryville Road • Chuluota, FL 32766

WELCOME TO THE Chuluota Wilderness Area

Explore One of Seminole County's Naturally Beautiful Places!

The **Chuluota Wilderness Area (CWA)** is an approximately 620 acre property located in the southeast corner Seminole County. This site's remote location and variety of native plant of communities makes it an excellent destination for hiking, bird watching and wildlife study. As you enjoy the natural surroundings, keep your eyes open for some of the resident wildlife, such as white-tailed deer, gopher tortoise and the eastern diamond-back rattle snake.

The west loop (red blazes) located closest to the entrance, traverses high xeric habitats such as sand pine scrub and xeric oak scrub and is approximately 2.6 miles round-trip. The east loop (yellow blazes) takes you through the mesic pond pine flatwoods, mixed hardwood swamps and along the east boundary of the property. The east loop is approximately 2.7 miles long and often floods during the wet season.

Seminole County Natural Lands offers several exciting programs for you & your family:

Eco Camp • Environmental Education Programs for Schools and Scout Troops • Community Programs • Guided Hikes • Specialized Classes for the Public

Get more information at: www.seminolecountyfl.gov/naturallands
or by calling 407-349-0959.

RECREATIONAL OPPORTUNITIES

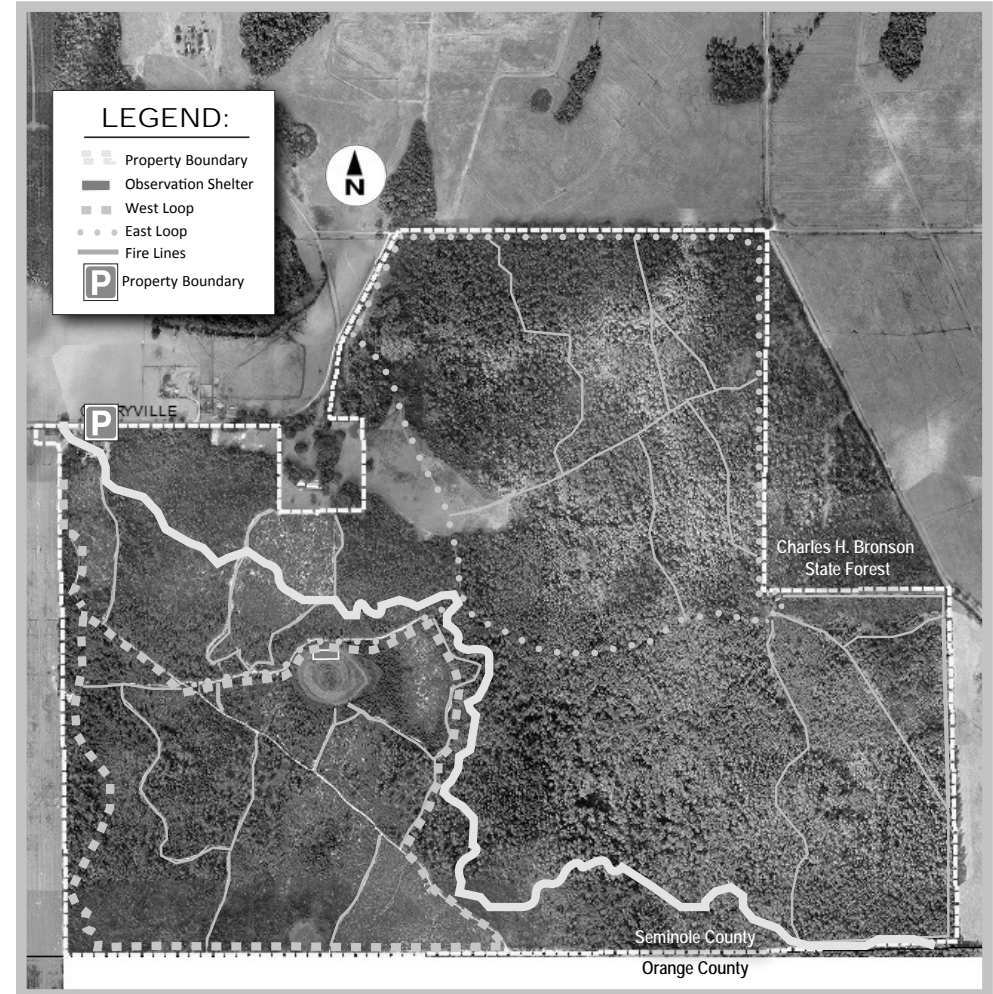


HIKING PHOTOS BIKING BIRDWATCHING EQUESTRIANS

FAUNA YOU COULD SEE ON THE TRAIL



EASTERN INDIGO SNAKE GREY FOX WHITE-TAILED DEER GREAT HORNED OWL



For your safety and the protection of resources,
please stay on the designated trail system.