

Seminole County
YOUR QUALITY OF LIFE



The Annual State of the County

**Presented by Carlton Henley
Commission Chairman**



Your County Commission



District 1
Bob Dallari



District 2
Michael McLean



District 3
Dick Van Der Weide




District 4
Carlton Henley
Chairman



District 5
Brenda Carey
Vice Chair



A sailboat is positioned on the left side of a calm lake, its reflection visible in the water. The sky is a mix of soft pinks, oranges, and blues, suggesting a sunset or sunrise. The entire scene is framed within a semi-transparent rectangular box. The background of the slide features a digital aesthetic with glowing blue and purple lines and a grid pattern.

YOUR QUALITY OF LIFE

Good Infrastructure

Safe Community

High-Paying Jobs

Excellent School System

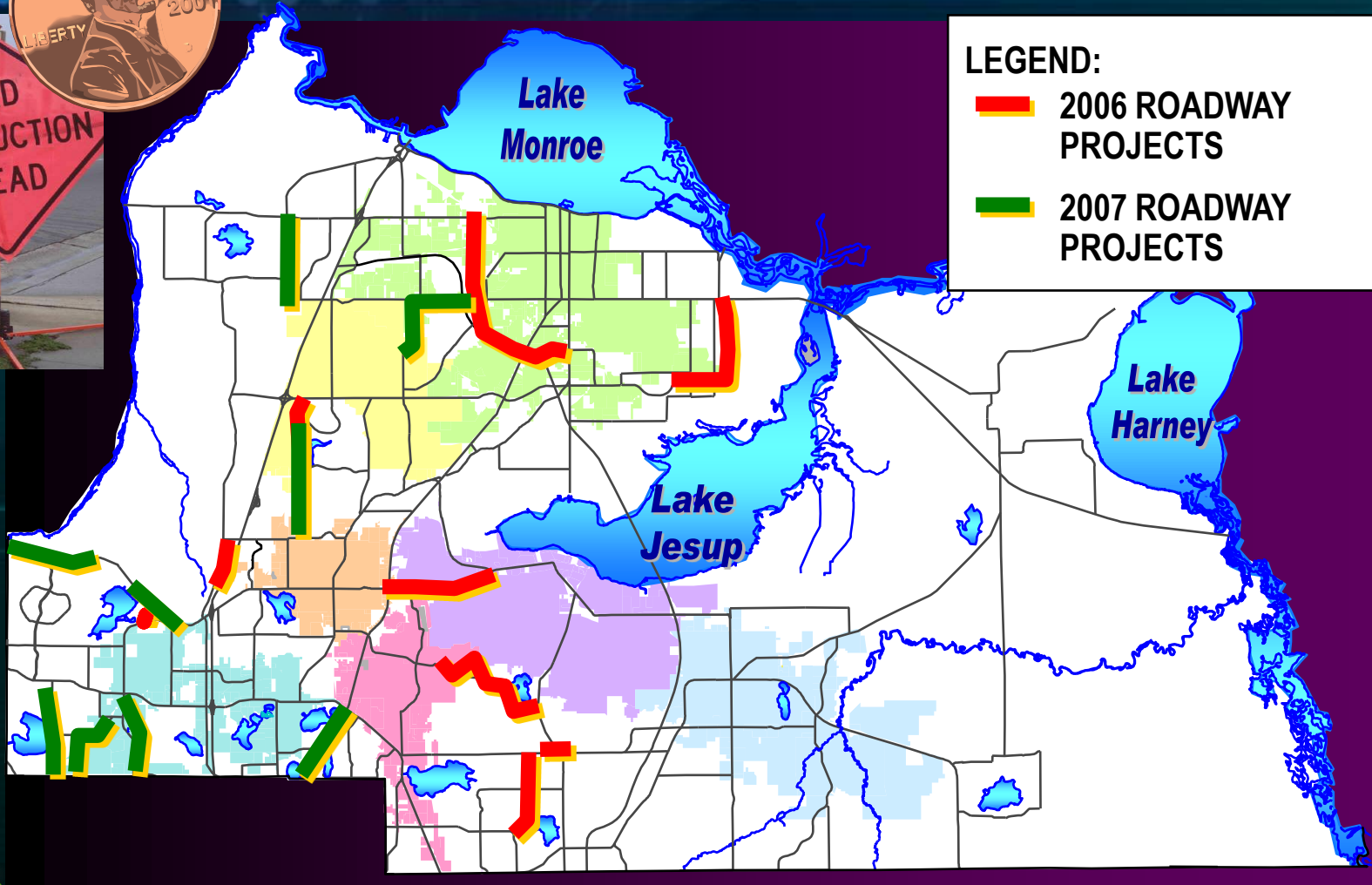
Cultural & Recreational Opportunities

Business-Friendly Government

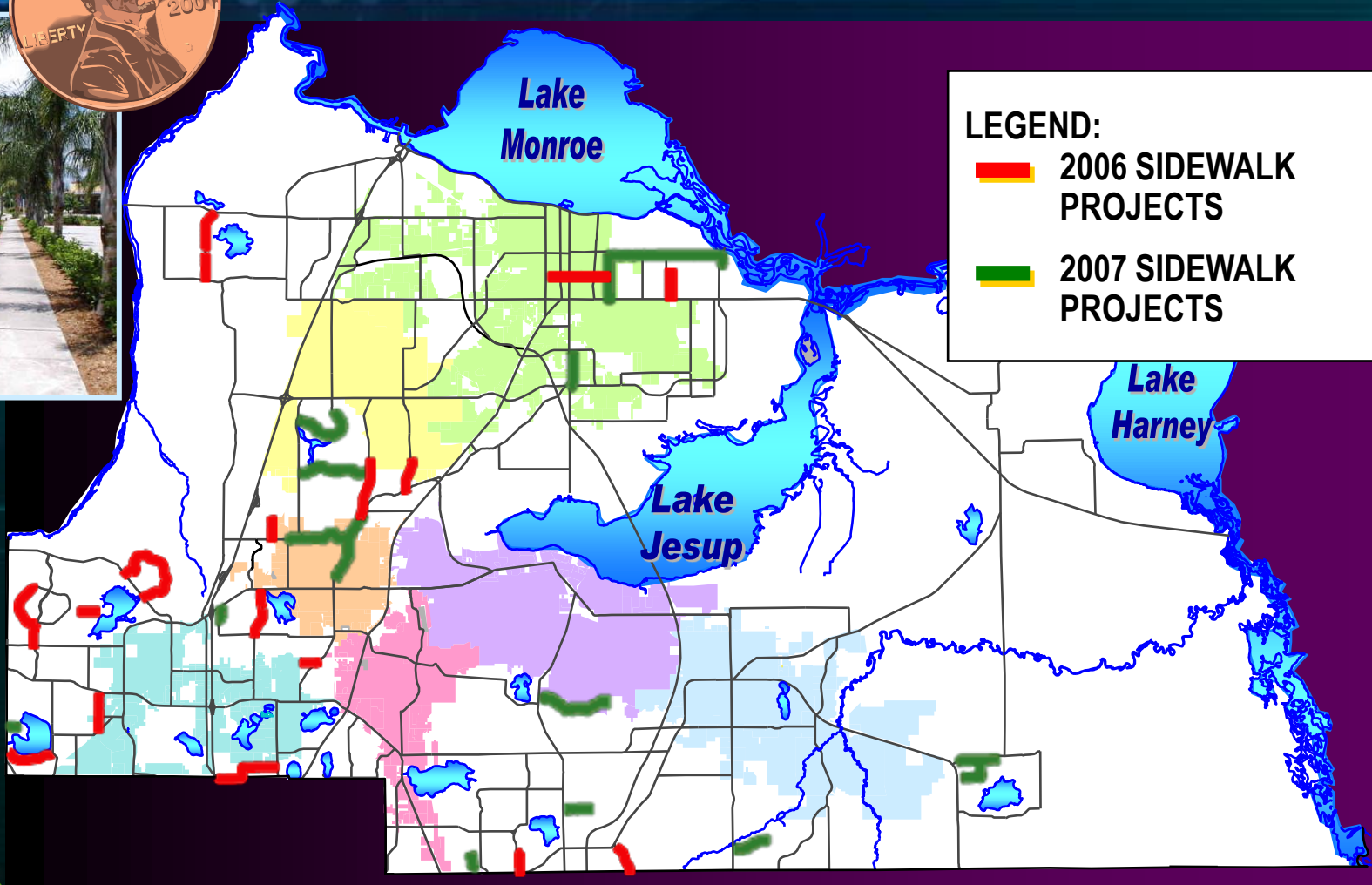
GOOD INFRASTRUCTURE



Major Roadway Projects



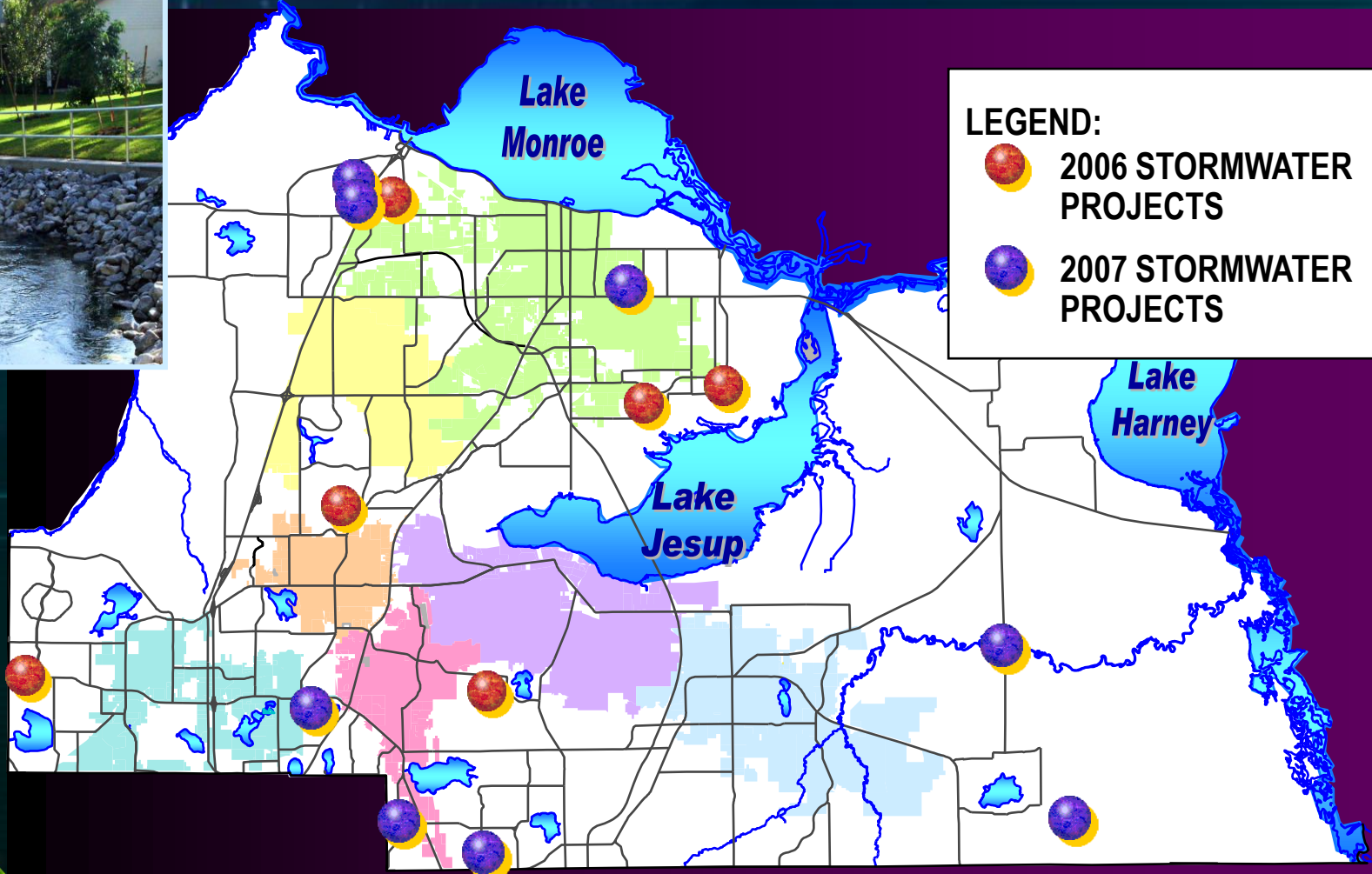
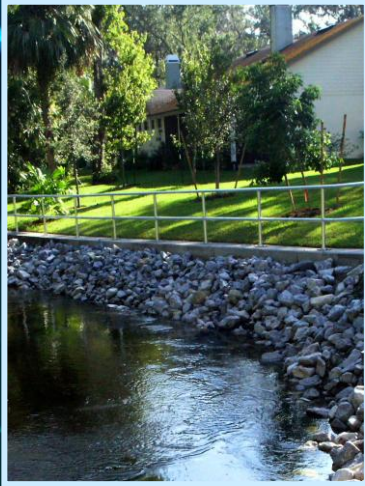
Major Sidewalk Projects



LEGEND:
 2006 SIDEWALK PROJECTS
 2007 SIDEWALK PROJECTS



Major Stormwater Projects



Subdivision Rehabilitation Program



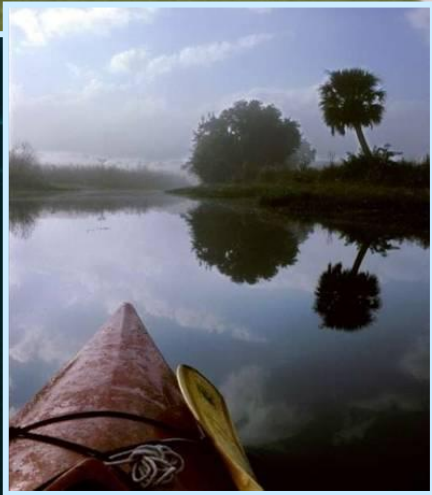
- **Areas of County built prior to 1945 have limited public infrastructure**
- **Plats recorded prior to State stormwater regulations**
- **Infrastructure in these areas exceeding designed life span**
- **Program addresses deficiencies in subdivisions**



Utility Service



- **Seminole County operates 16 water treatment plants that provided 7.6 billion gallons of water last year**
- **Seminole County operates 2 wastewater treatment facilities and has a partnership with the City of Orlando to utilize the Iron Bridge facility**



SAFE COMMUNITY



Mosquito Control Program

MOSQUITO



ALERT



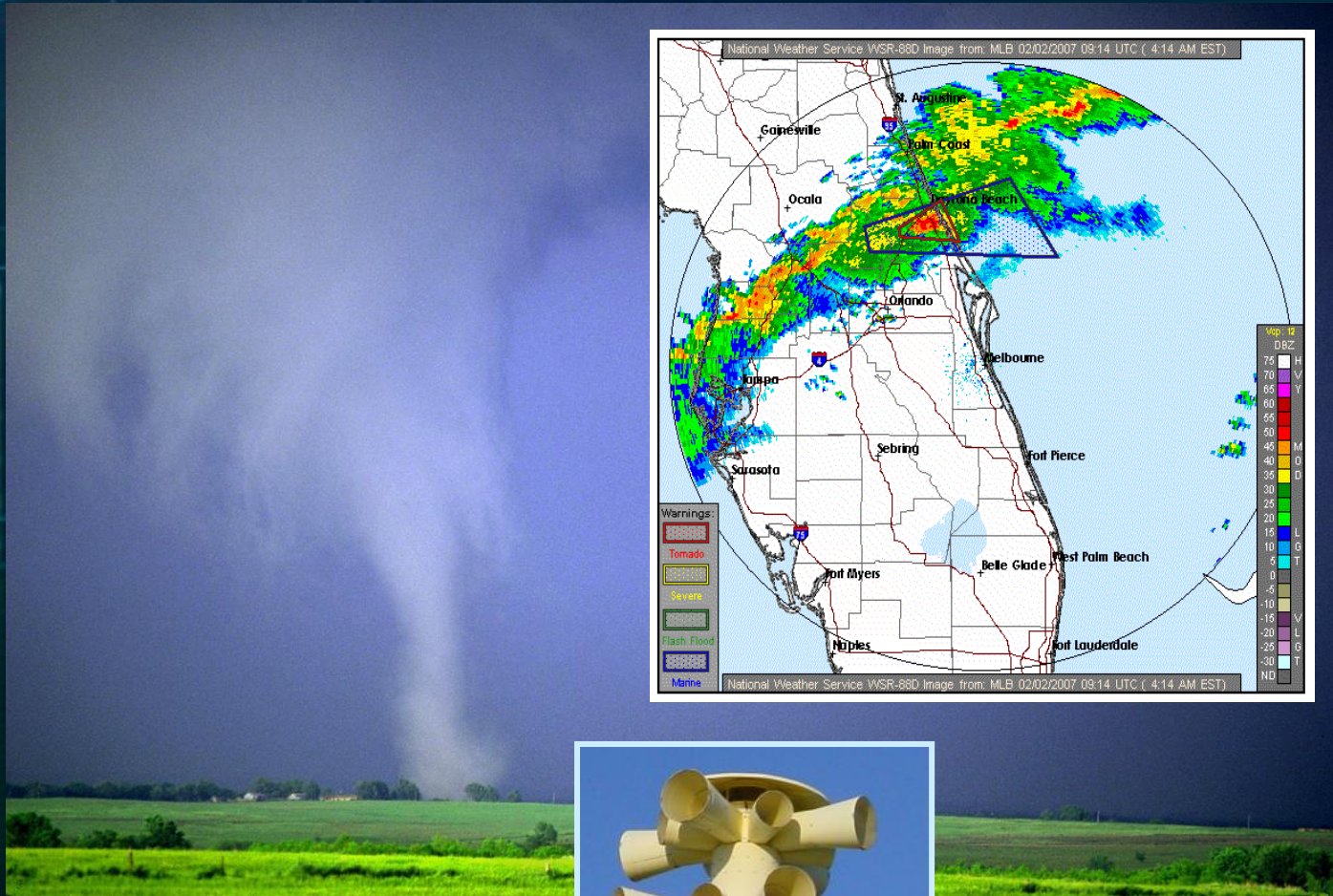
Helicopters



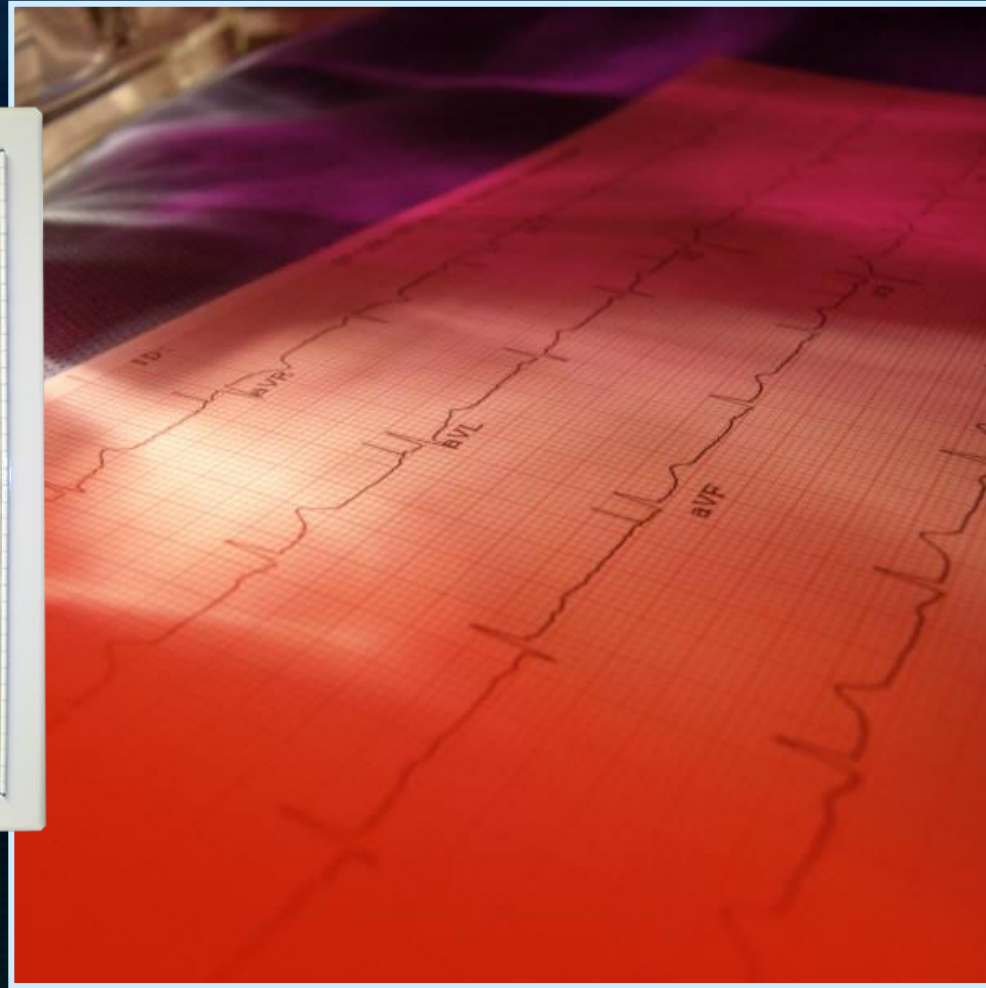
Helicopters



Storm Safety



AED – You've Got to Have Heart



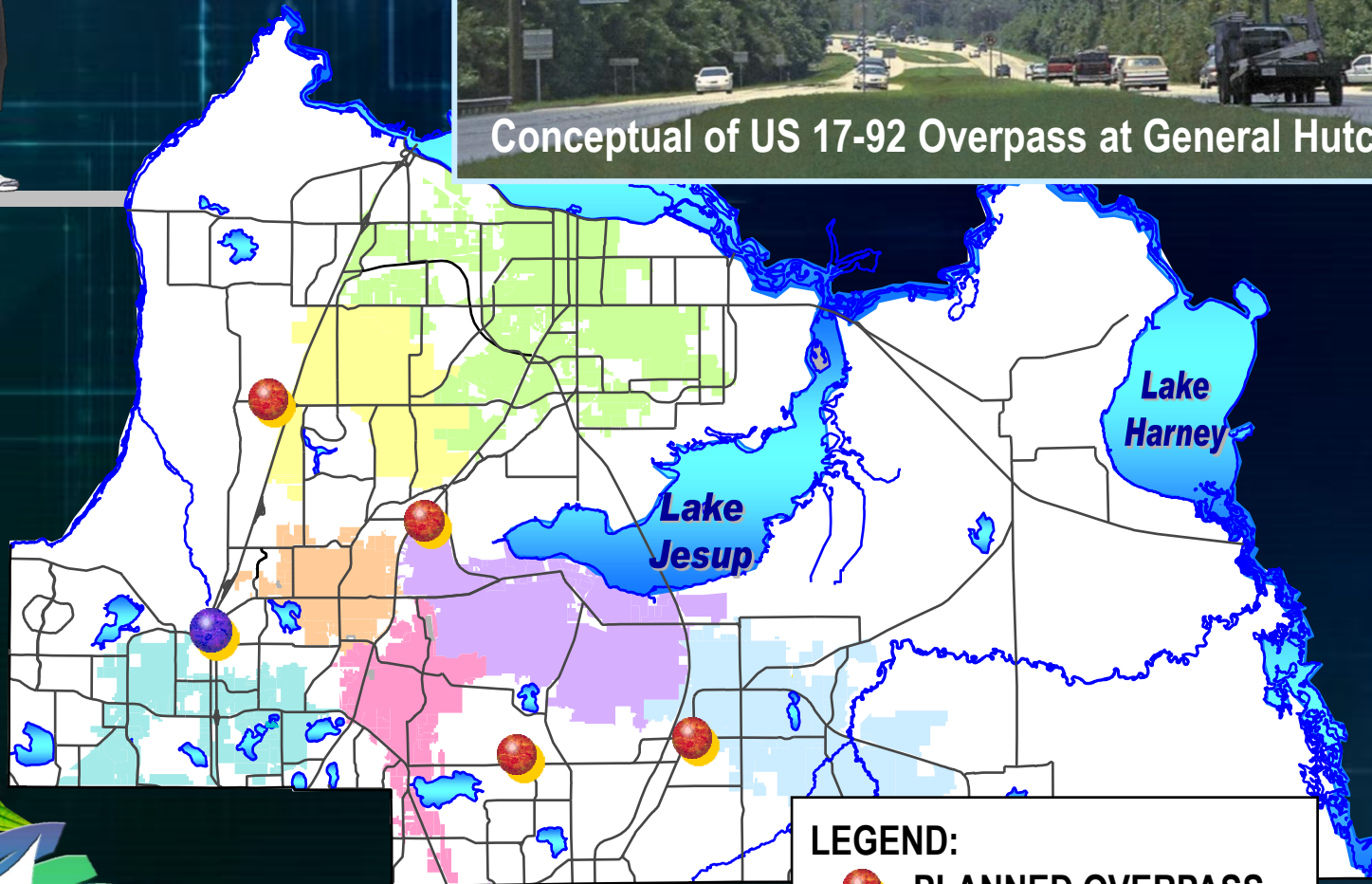
Lightning Safety



Safety with Pedestrian Overpasses



Safety with Pedestrian Overpasses



- LEGEND:**
-  PLANNED OVERPASS
 -  PLANNED UNDERPASS



Sheriff's Office



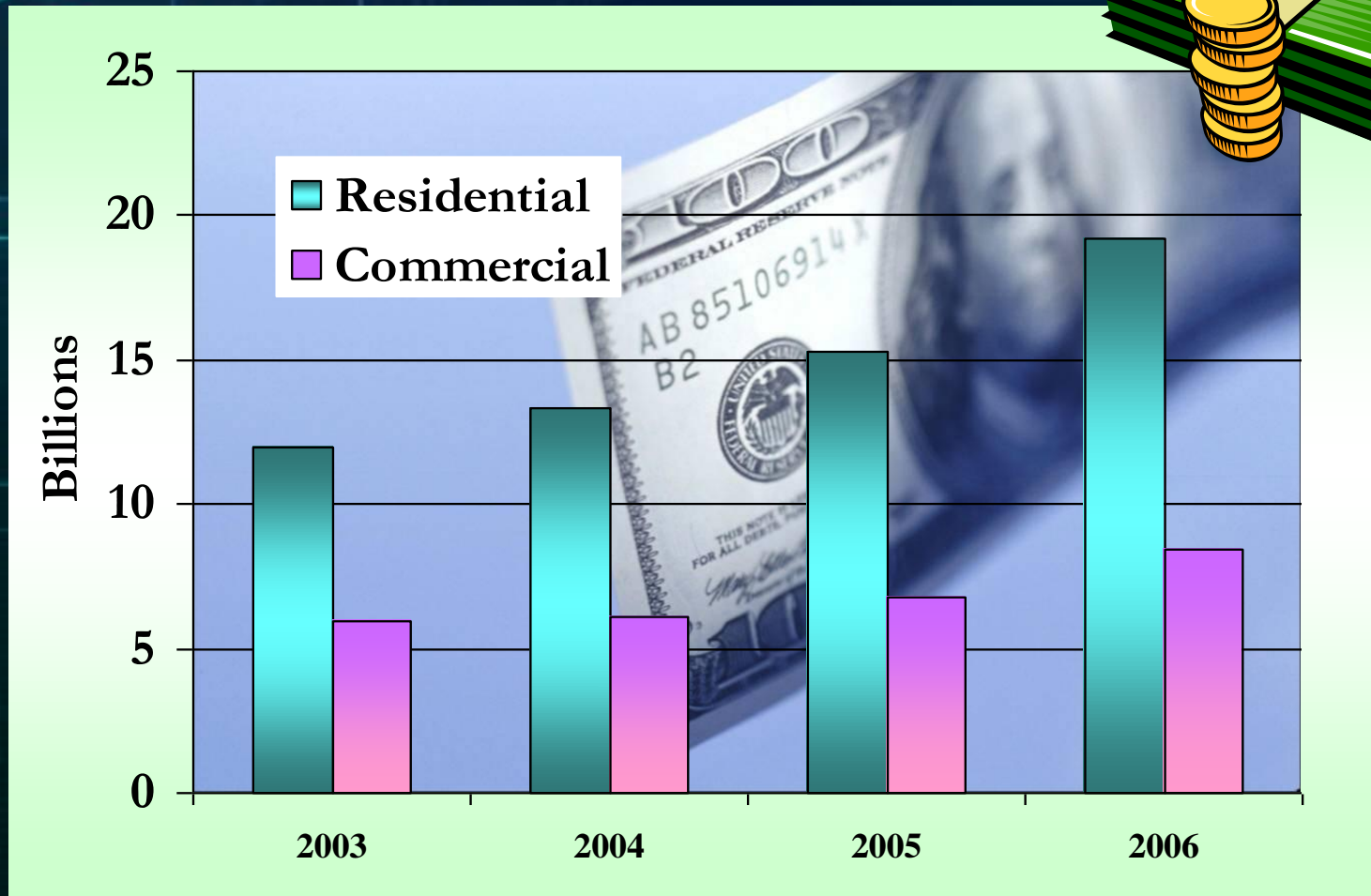
Your Safety





HIGH-PAYING JOBS

Residential vs. Commercial Taxable Value



North I-4/Lake Mary

The Seminole Community College Center for Economic Development



SCC Corporate College
**Seminole County Small Business
Advisory Board**
**Seminole Regional
Chamber of Commerce**
**Seminole County
Economic Development**
Metro-Orlando EDC
**Florida High-Technology
Corridor Council**
University of Central Florida



Small Business Development

Seminole County partners with two agencies to provide small business development.

Seminole Technology Business Incubation Center (STBIC), located in the I-4 corridor, is dedicated to growing technology based small businesses.



In 2006 the Small Business Development Center (SBDC) serviced 254 clients and hosted 29 events, many in conjunction with our library system that reached an additional 600 individuals.



UCF Accelerator



- UCF Technology Incubator program adjacent to Oviedo City Hall
- Complements facility located in the Central Florida Research Park
- Over 87 percent of companies that graduate from these programs remain viable businesses five years after graduation
- More than 85 percent of companies that graduate from an incubator locate within 5 miles
- BCC approved \$300,000 per year for 3 years
- 13,000 square foot facility, will house 10-12 clients



Major Employers in Seminole County

Seminole County Public Schools – 9,145

Convergys – 1,700

Florida Hospital (Altamonte) – 1,450

Seminole Community College – 1,350

Sprint – 1,200

First USA – 1,200

South Seminole Hospital – 1,000

Central Florida Regional Hospital – 850

Sears Home Improvement – 800

AAA – 700

Florida Extruders – 650

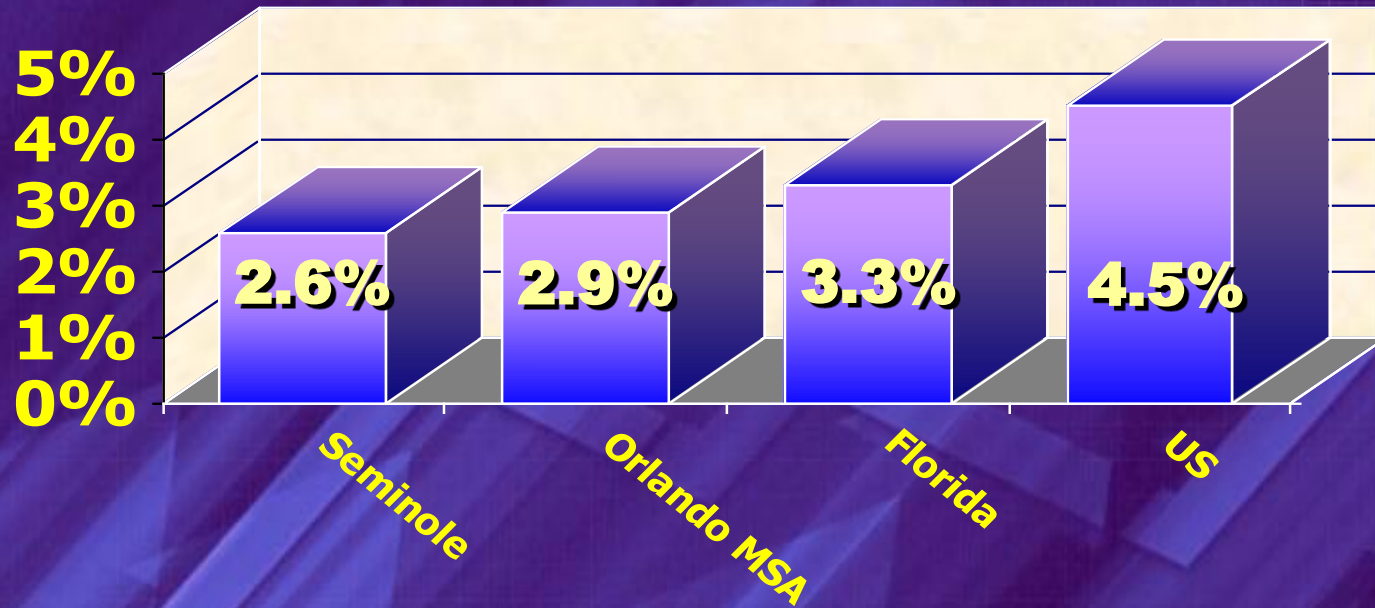
Veritas – 650

Bank of New York (BNY) – 600

Curascript – 500



Unemployment Rates



Income in Seminole County

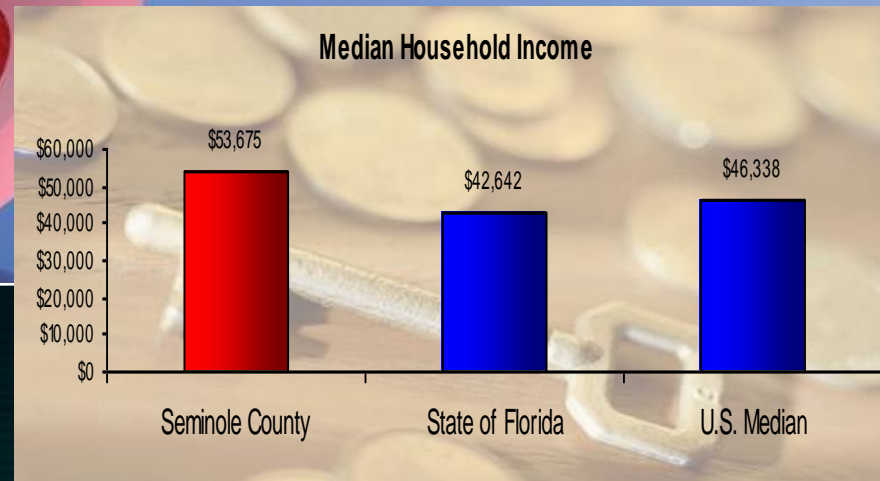
**AVERAGE HOUSEHOLD
INCOME**
\$71,471

**MEDIAN HOUSEHOLD
INCOME**
\$56,072

Source: DemographicsNow

★ Median Household
Income

⇒ 3rd highest
among Florida
counties



Highly Educated Population



EXCELLENT SCHOOL SYSTEM



Seminole County Public Schools



- 17 Seminole County schools were ranked as Florida's Top High Performing Schools
- NEWSWEEK Magazine ranked 8 Seminole County 4-year high schools in the top 3% in the nation according to the Challenge Index
- 94% of Seminole County Schools are "A" or "B" with 80% ranked as an "A" school



Partnering with the School System

- **Sharing of the 1-cent sales tax**
- **Approving the Schlosberg fee for additional revenue**
- **Partnering in the construction of the Safe Harbor building**
- **Assisting in funding of the Driver Education Program in two high schools**
- **Funding construction of swimming pools at three high schools**





**CULTURAL &
RECREATIONAL
OPPORTUNITIES**

County Support



Jetta Point & Soldiers Creek Parks



SEMINOLE COUNTY HISTORIC MARKER

SANFORD STATE FARMERS' MARKET

On December 19, 1934, the first state owned Farmers' Market in the nation was dedicated on this site at the corner of 15th and French Avenue, Sanford, Florida. Located on 20 acres of the land acquired by the City of Sanford and Seminole County from Alec V. and Katherine K. French, the market became a center of market activity for farmers throughout Central Florida. By 1941, this first successful model led the way to over 27 similar markets serving the agricultural industry in Florida.

The first buildings, constructed of wood, were built with loans from the Federal Emergency Relief Agency. The stalls, 108 in all, were approximately 11' x 22' and rented for 50 cents a day, \$3.00 per week or \$10.00 per month. An Atlantic Coastline Railroad spur provided rail service to a portion of the market.

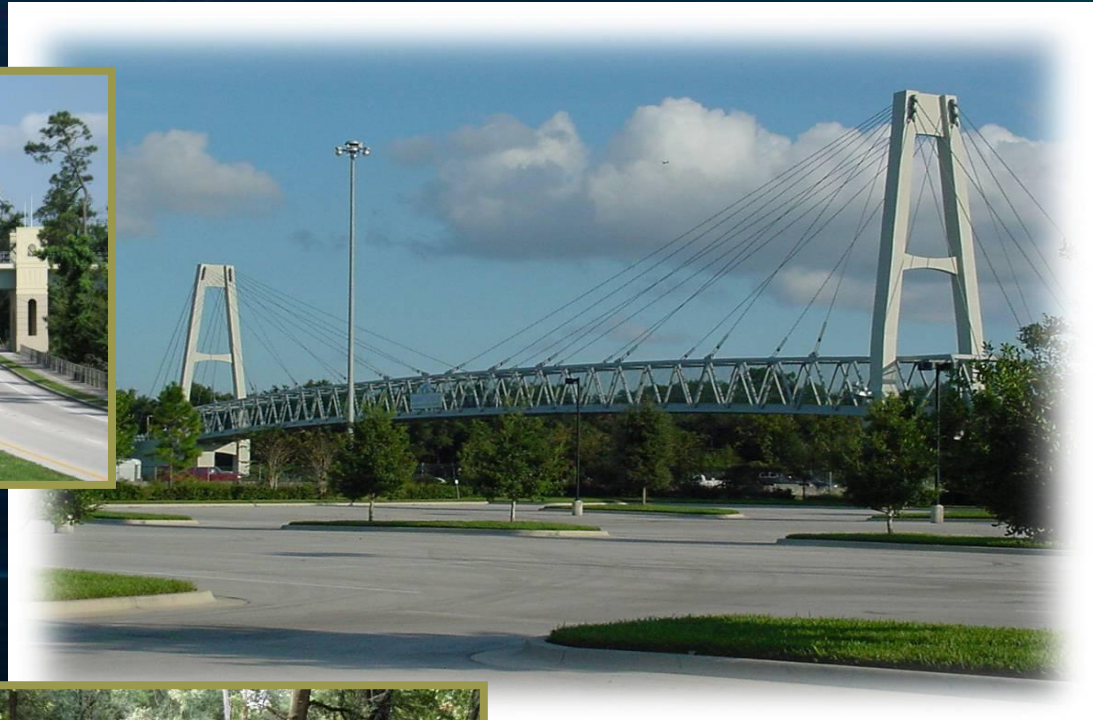
(Continued on other side)



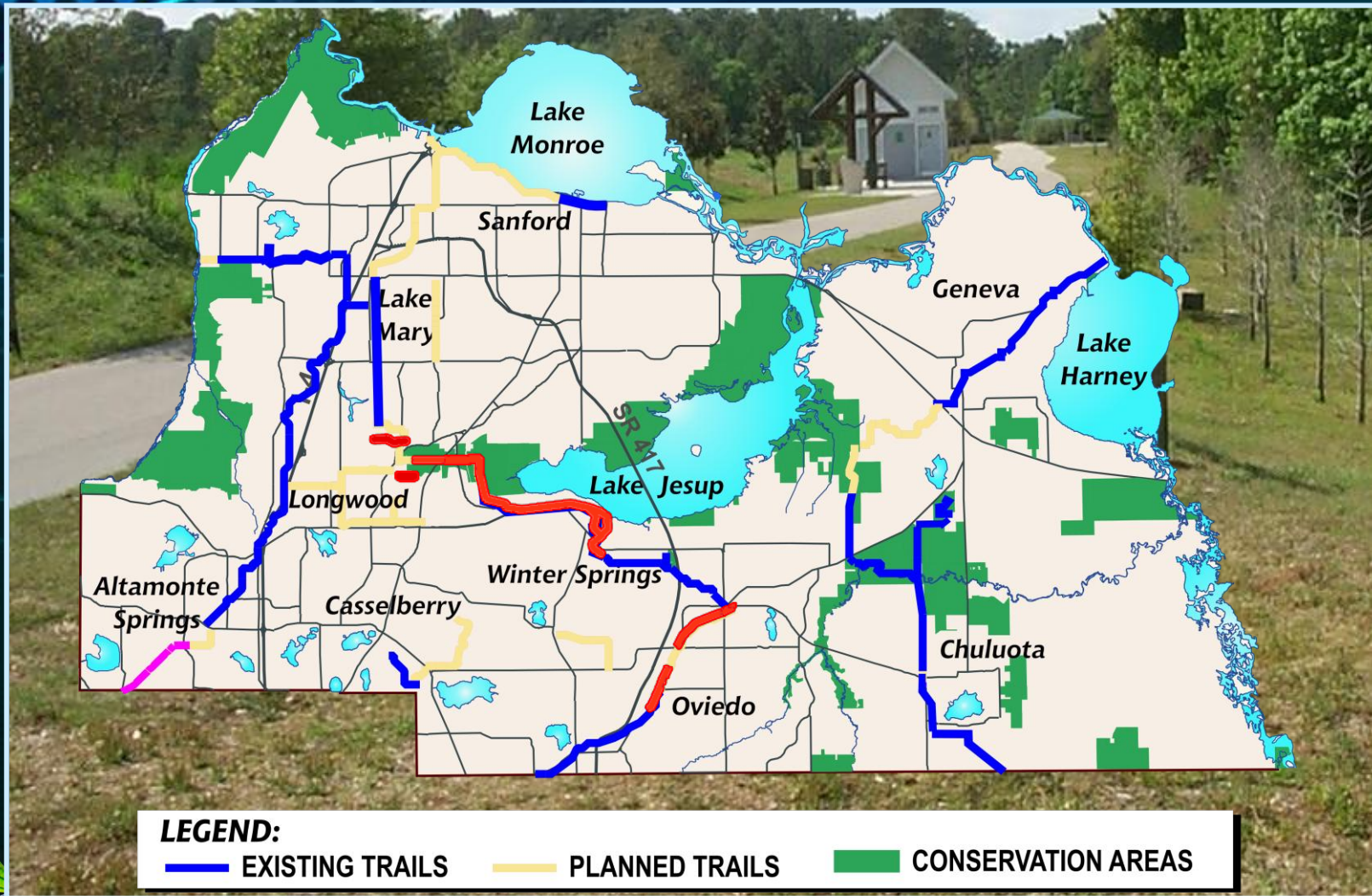
The Natural Lands Program



Trails Program



Upcoming Trail Projects





**BUSINESS-FRIENDLY
GOVERNMENT**

Financial Overview



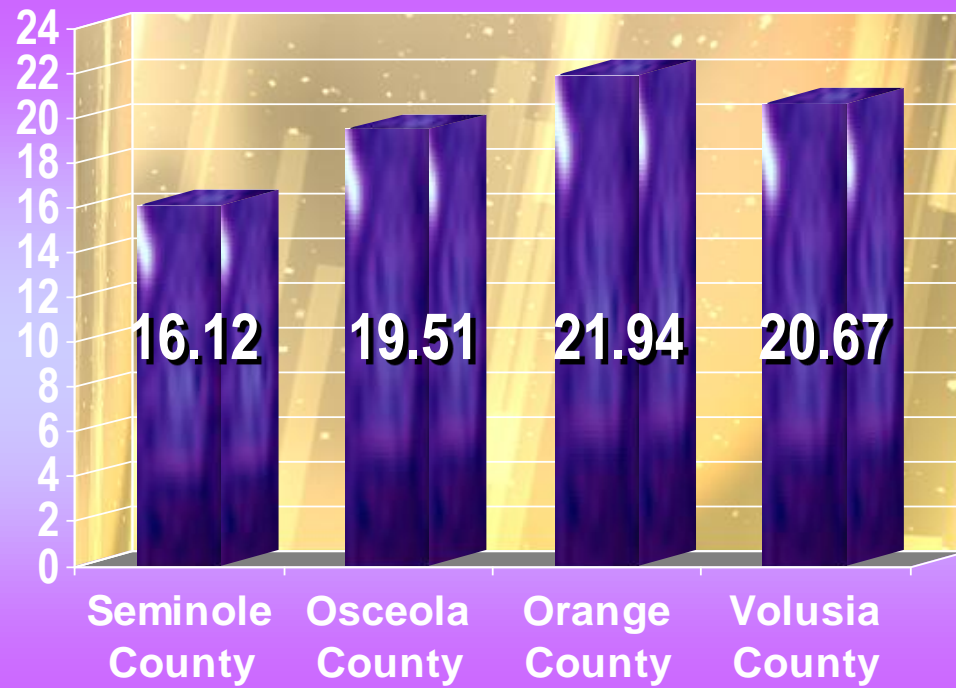
Budget Highlights

- Countywide Tax Rate of 4.9989 mills, well below State Cap of 10 mills
- Aggregate millage is 7.9002 (unincorporated)
- Current Rate Maintained for 8 years

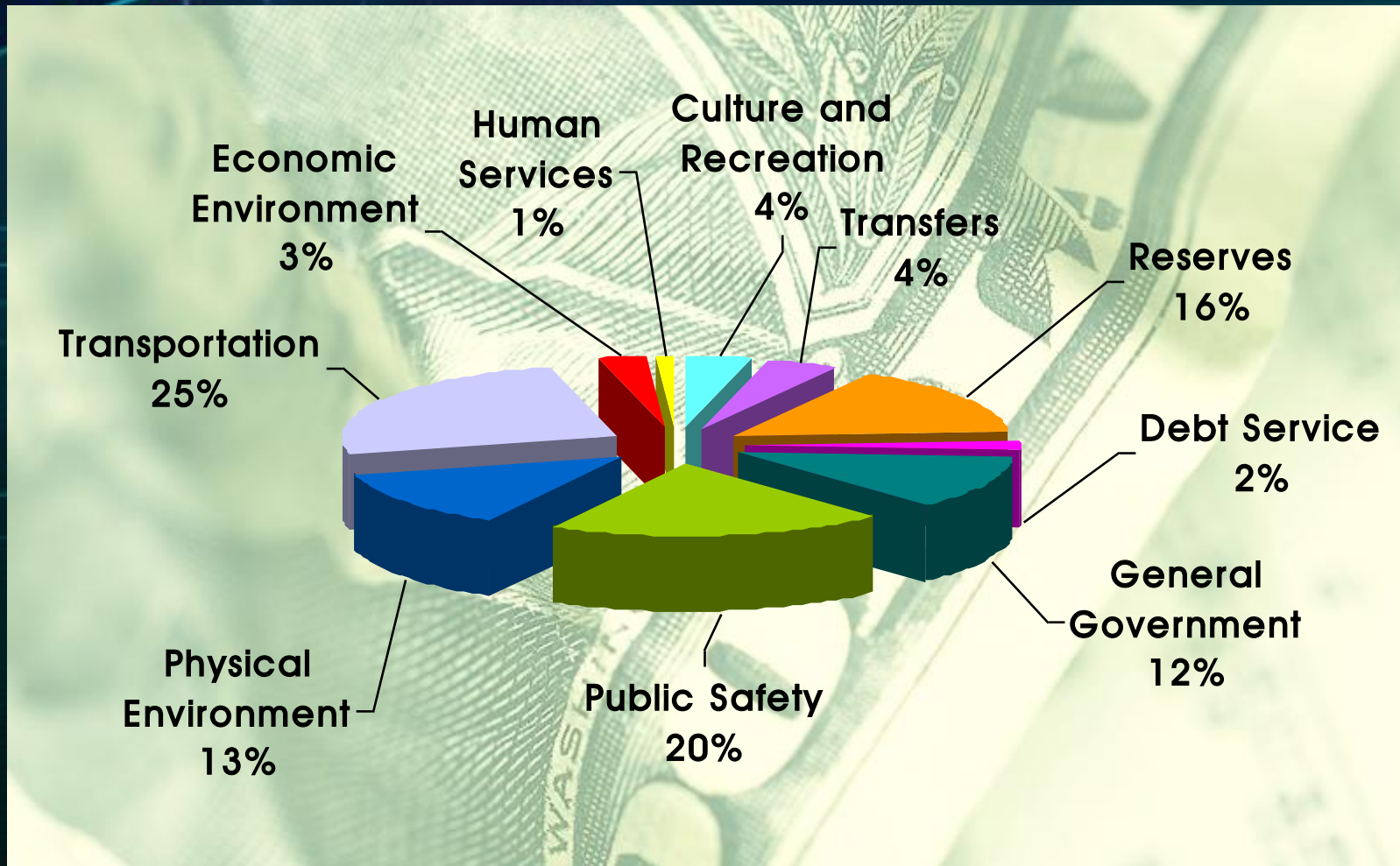


Comparative Tax Rates

Millage Rates in Unincorporated Counties



Where the Money Goes



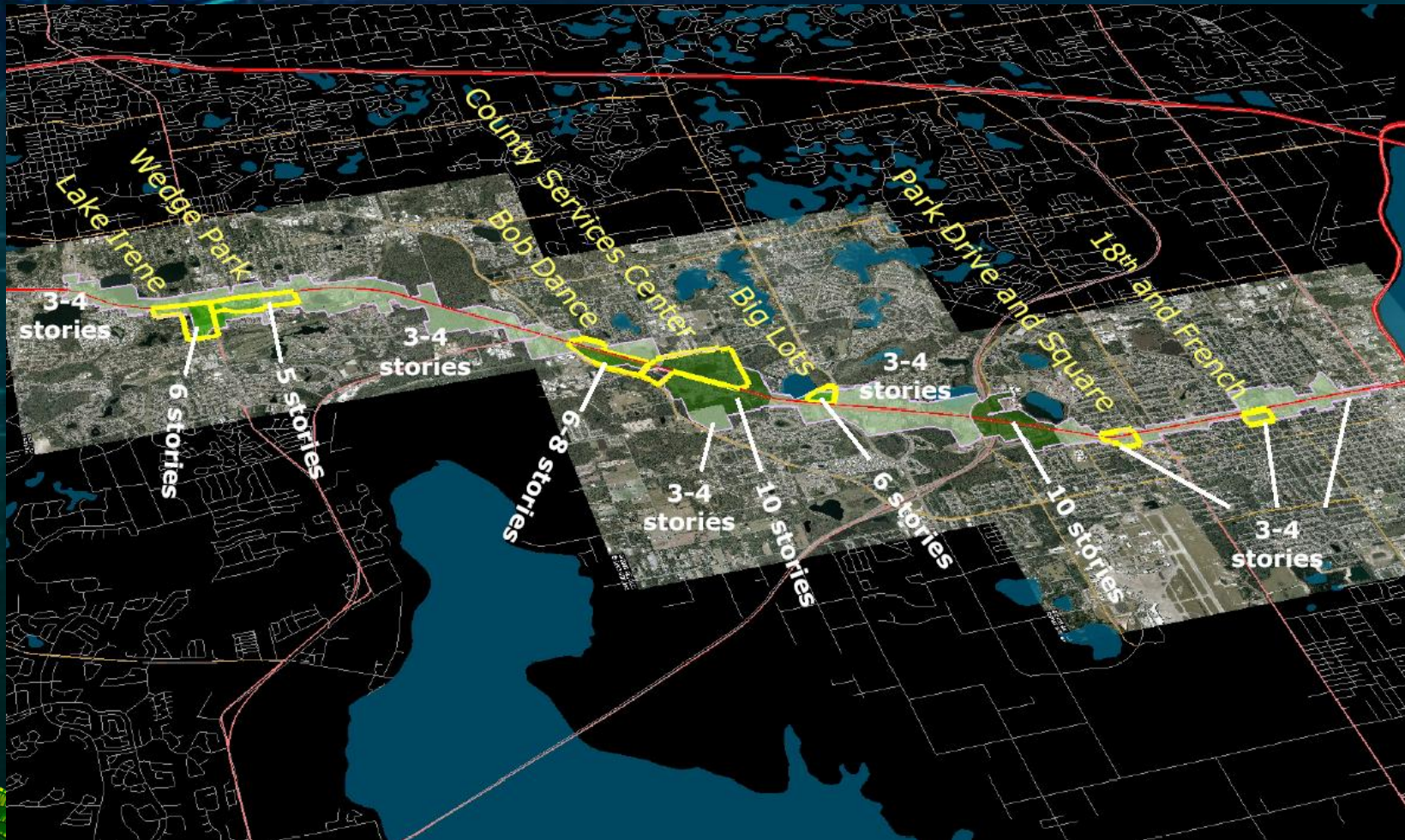
Financial Overview



- **Investment portfolio \$501 million as of 9-30-06**
- **Strong bond rating, increased from AA- to AA**
- **Restructured Sales Tax Revenue Bonds for more than \$1.6 million in savings**



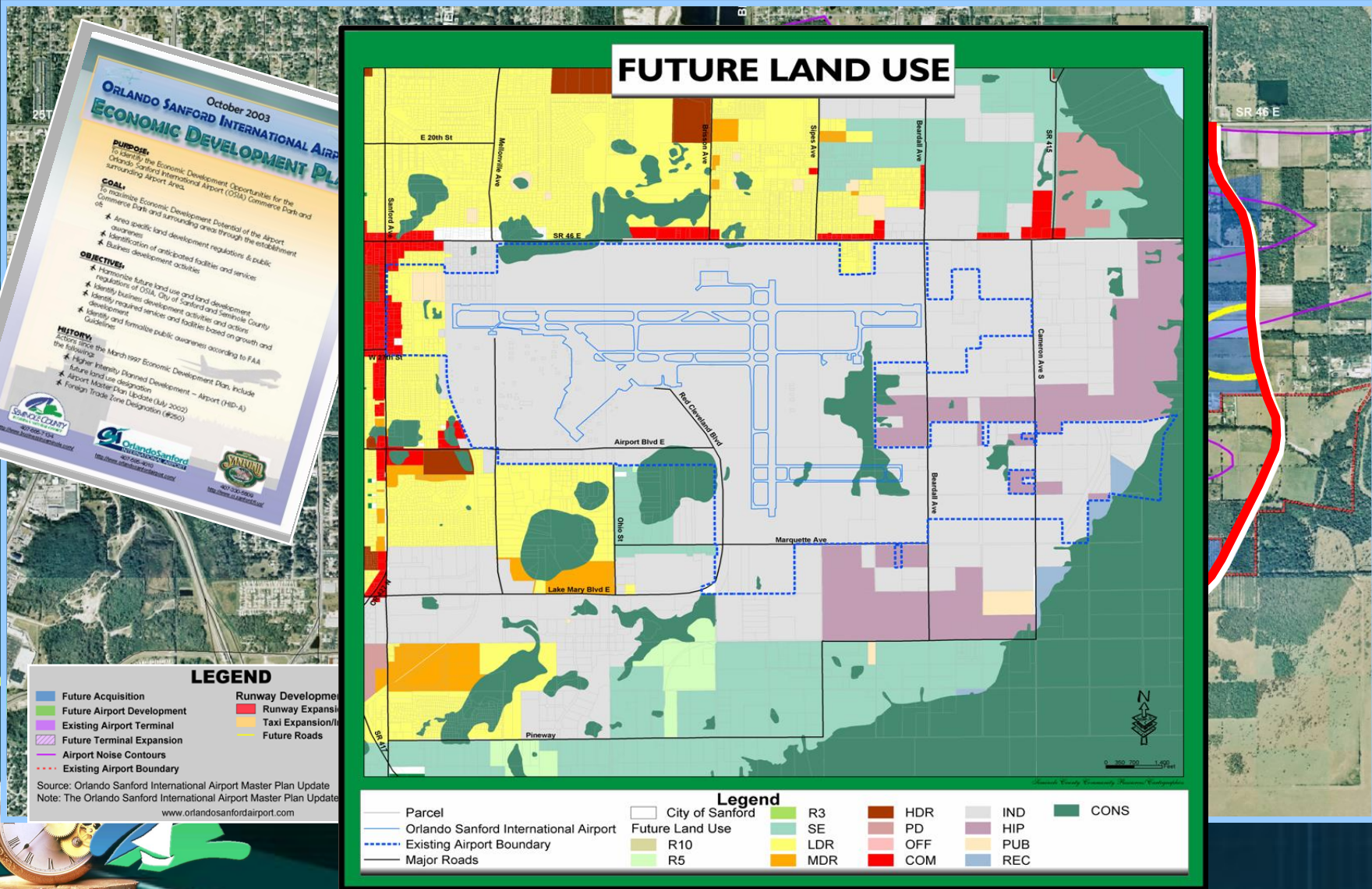
U.S. Highway 17-92 Corridor CRA



County, State & Private
Investments



Airport Potential for Growth



Convention Center in the Future

4 STAR HOTEL

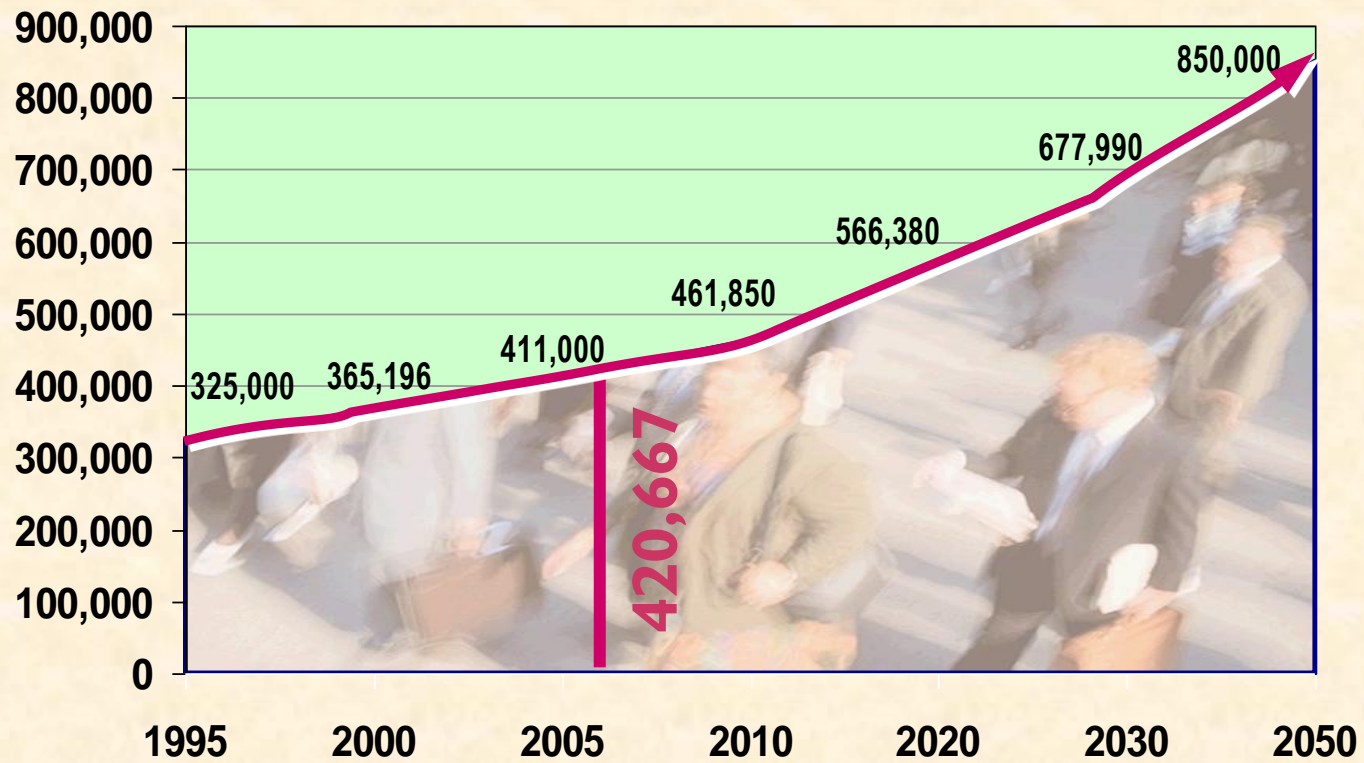




**ISSUES THAT
THREATEN OUR
QUALITY OF LIFE**

The Issue - Booming Population

Seminole County Population Growth Trends



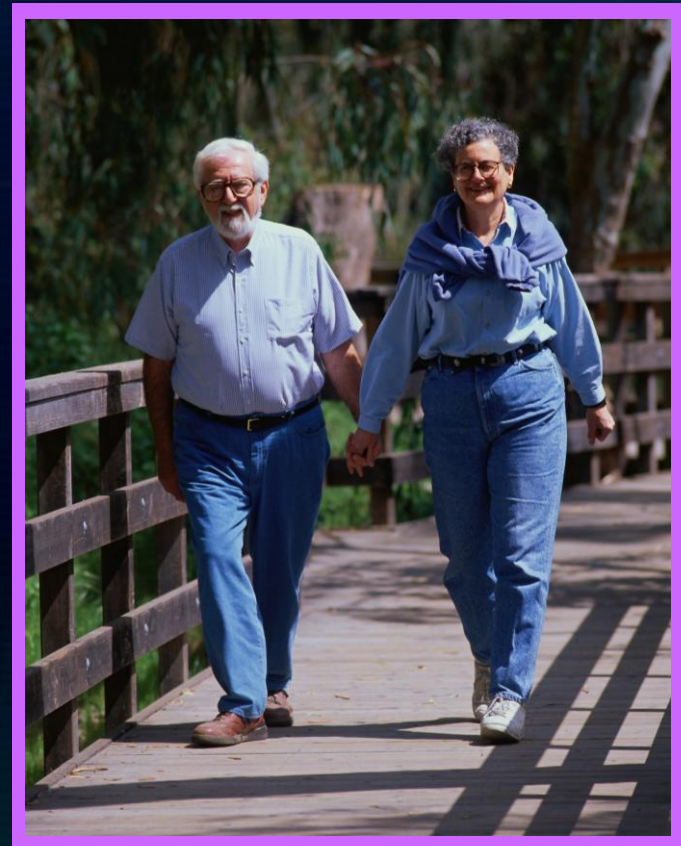
The Issue - Water Resources



- **Floridan Aquifer major supply**
- **Residents use 20 MGD**
- **SJRWMD will cap CUP in 2013**
- **Projected needs in 2020 are 30 MGD (an increase of 50%)**



Communities for a Lifetime



Local Housing Assistance Plan



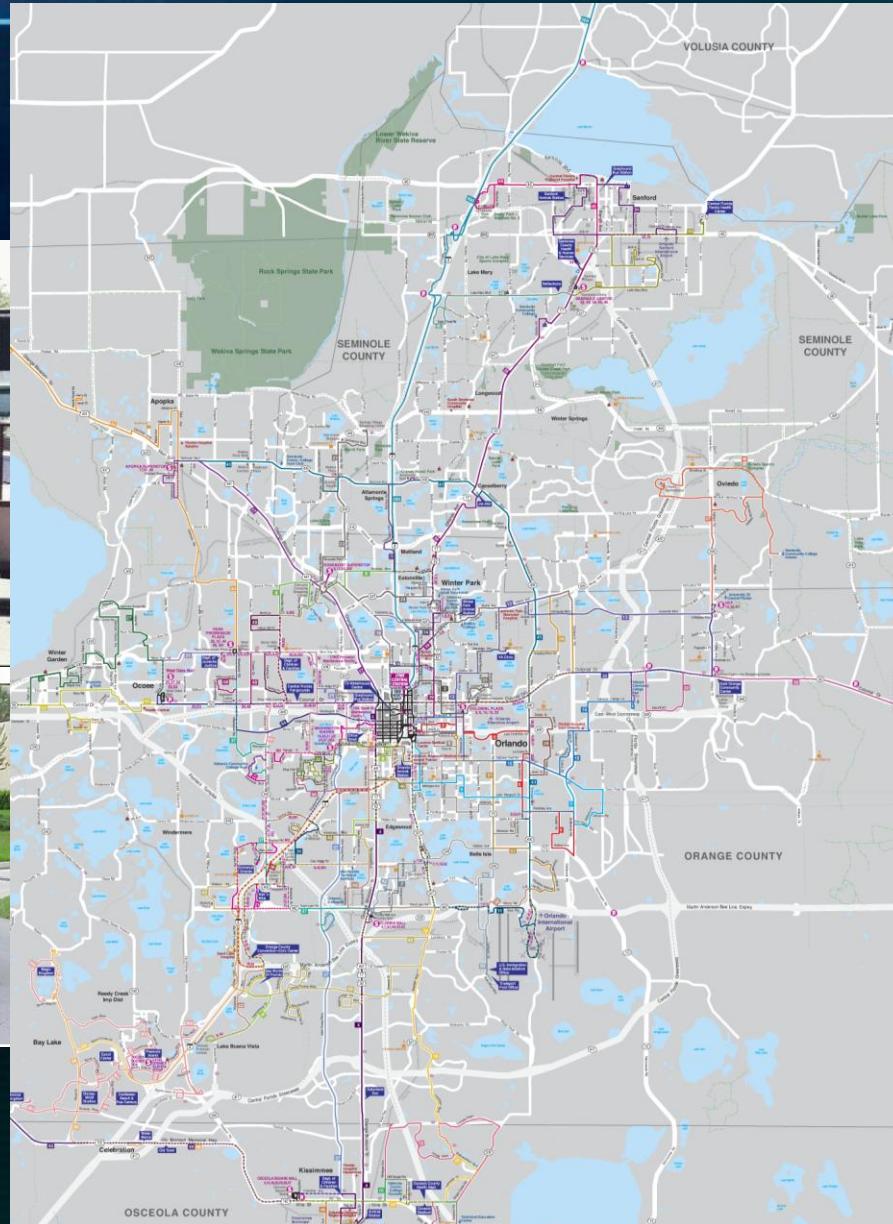
The Issue – Absolute Gridlock



LYNX Transit System



LYNX



Central Florida Commuter Rail



Proposed Legislation



Senate Joint Resolution 534

Senate Joint Resolution 452

Senate Bill 454

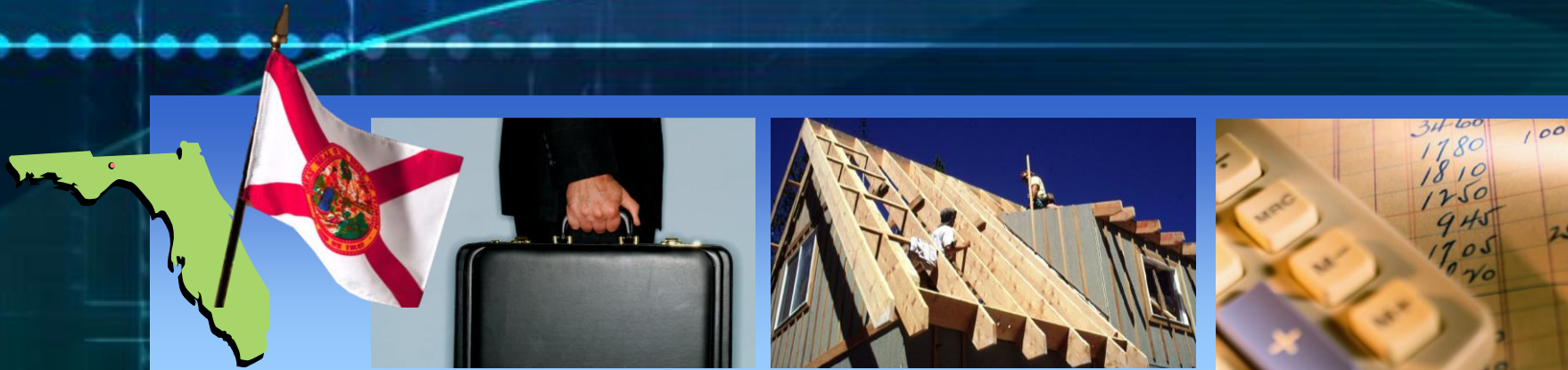
House Joint Resolution 23

House Joint Resolution 459

House Joint Resolution 571



Summary of Proposed Impacts



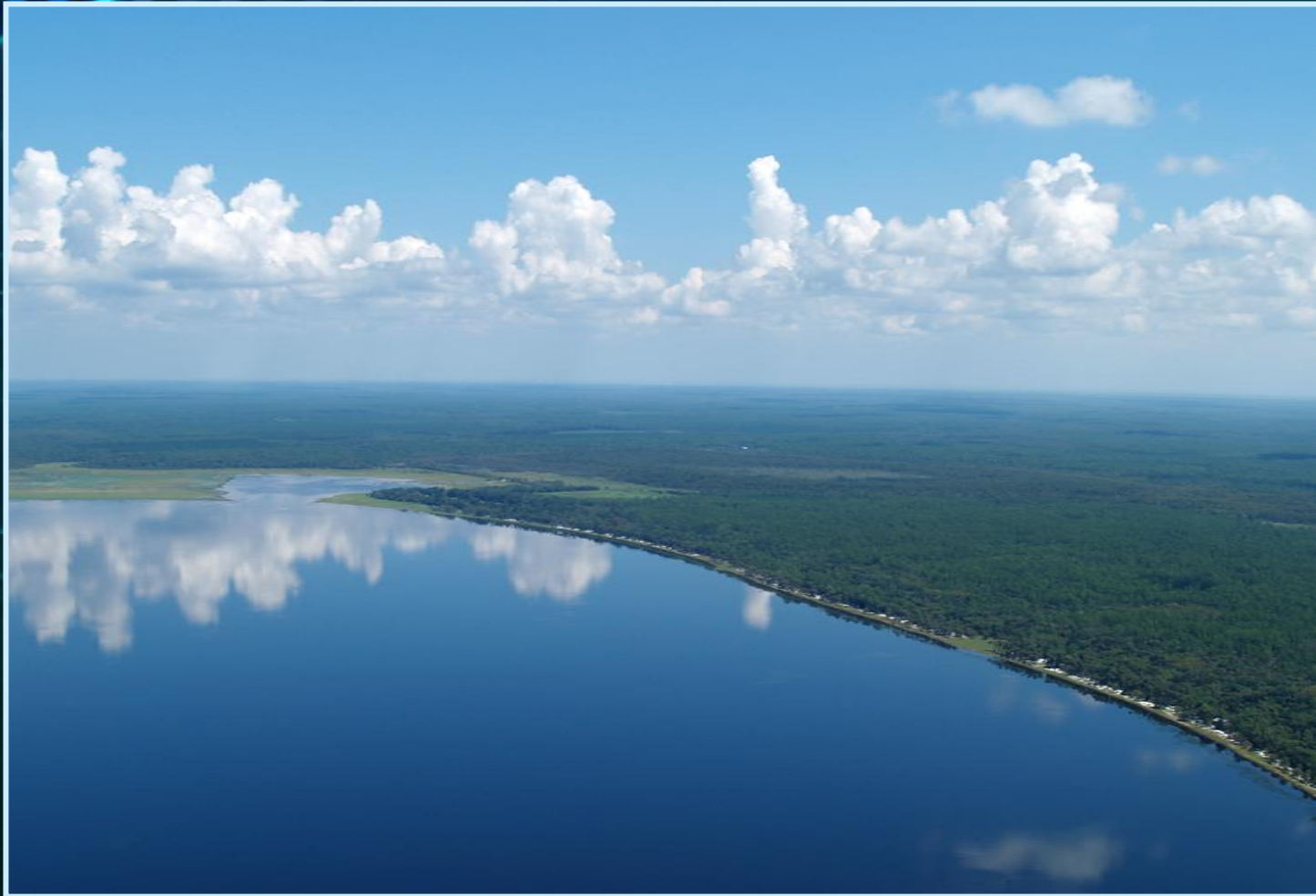
| | |
|---|---------------|
| 3% Cap on Non-homestead Property | \$43.0 |
| Double Homestead to \$50,000 | \$30.8 |
| Statewide Portability Save Our Homes Benefit | \$18.0 |
| \$25,000 Exemption Tangible Personal Property | \$ 1.2 |

\$43.4 Million Impact on the County

\$93 Million Impact on ALL Entities



Visions of Seminole



You Are the Solution



You Are the Solution



**The
Seminole
County of
Tomorrow
is in
ALL of
Our Hands**



Seminole County
YOUR QUALITY OF LIFE



The Annual State of the County

**Presented by Carlton Henley
Commission Chairman**

