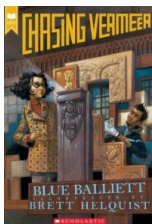


5TH GRADE FAVORITES



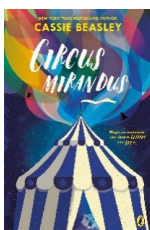
THE CROSSOVER
JFIC ALEXANDER
750L



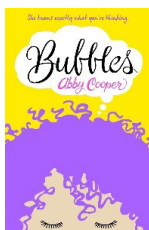
CHASING VERMEER
JFIC BALLIETT
770L



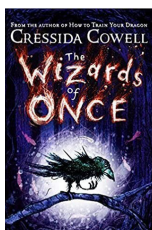
"BONE" SERIES
JGN BONE
GN 340L +



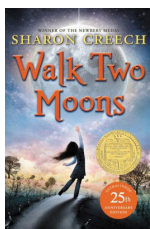
CIRCUS MIRANDUS
JFIC BEASLEY
710L



BUBBLES
JFIC COOPER
710L



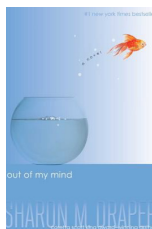
THE WIZARDS OF ONCE
JFIC COWELL
890L



WALK TWO MOONS
JFIC CREECH
770L



THE JOURNEY OF LITTLE CHARLIE
JFIC CURTIS
960L



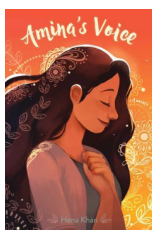
OUT OF MY MIND
JFIC DRAPER
700L



TUESDAYS AT THE CASTLE
JFIC GEORGE
860L



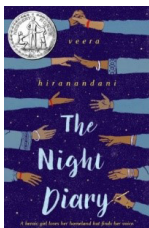
REFUGEE
JFIC GRATZ
800L



AMINA'S VOICE
JFIC KHAN
800L

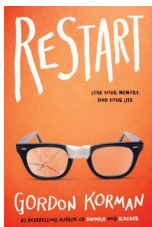
MORE ON BACK >>

SEMINOLE COUNTY PUBLIC LIBRARY



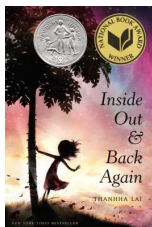
THE NIGHT DIARY
JFIC HIRANANDANI

700L



RESTART
JFIC KORMAN

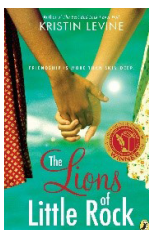
730L



INSIDE OUT & BACK AGAIN

JFIC LAI

800L



THE LIONS OF LITTLE ROCK

JFIC LEVINE

630L



THE UNWANTEDS

JFIC MCMANN

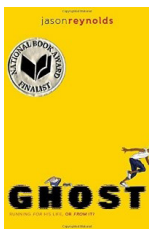
880L



WONDER

JFIC PALACIO

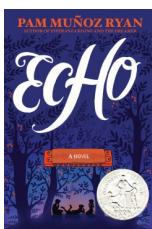
790L



GHOST

JFIC REYNOLDS

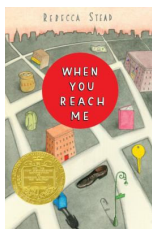
730L



ECHO

JFIC RYAN

680L



WHEN YOU REACH ME

JFIC STEAD

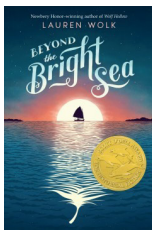
750L



THE NEBULA SECRET

JFIC TRUEIT

660L



BEYOND THE BRIGHT SEA

JFIC WOLK

770L



FRONT DESK

JFIC YANG

640L