

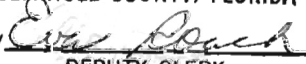
AN ORDINANCE AMENDING THE VISION 2020 SEMINOLE COUNTY COMPREHENSIVE PLAN; AMENDING THE TEXT OF THE CAPITAL IMPROVEMENTS ELEMENT OF THE COMPREHENSIVE PLAN; PROVIDING FOR LEGISLATIVE FINDINGS; PROVIDING FOR SEVERABILITY; PROVIDING FOR CODIFICATION; AND PROVIDING FOR AN EFFECTIVE DATE.

**WHEREAS**, the Board of County Commissioners of Seminole County (hereinafter referred to as the "Board") enacted Ordinance Number 91-13, adopting the 1991 Seminole County Comprehensive Plan, which was subsequently amended in accordance with State law; and

**WHEREAS**, the Board enacted Ordinance Number 2001-21, which renamed the 1991 Seminole County Comprehensive Plan to the "Vision 2020 Seminole County Comprehensive Plan" (hereinafter referred to as the "Plan"); and

**WHEREAS**, the amendment of the Capital Improvements Element is exempt from the twice yearly large scale amendment process (Sections 163.3187(1)(f); and

**WHEREAS**, the Board has followed the procedures set forth in Sections 163.3177, Florida Statutes, stating that "Capital improvements element amendments adopted after the effective date of this act [July 1, 2005] shall require only a single public hearing before the governing board which shall be an adoption hearing as described in s. 163.3184(7). Such amendments are not subject to the requirements of s. 163.3184(3)-(6)."

CERTIFIED COPY  
MARYANNE MORSE  
CLERK OF CIRCUIT COURT  
SEMINOLE COUNTY, FLORIDA  
BY   
DEPUTY CLERK

**WHEREAS,** the Board has substantially complied with the procedures set forth in the Implementation Element of the Plan regarding public participation; and

**WHEREAS,** the Board held a public hearing with all required public notice for the purposes of hearing and considering the recommendations and comments of the general public prior to final action on the Plan amendments set forth herein; and

**WHEREAS,** the Board hereby finds that the Plan, as amended by this ordinance, is internally consistent with and compliant with the provisions of State law including, but not limited to, Part II, Chapter 163, Florida Statutes, and the State Comprehensive Plan, and the Strategic Regional Plan of the East Central Florida Regional Planning Council; and

**WHEREAS,** the Seminole County Home Rule Charter requires that an Economic Impact Statement be prepared to address the potential fiscal impacts and economic costs of each amendment enacted by this Ordinance upon the public and taxpayers of Seminole County and such Economic Impact Statement has been prepared and has been made available for public review and copying prior to the enactment of this Ordinance in accordance with the provisions of the Seminole County Home Rule Charter.

**NOW, THEREFORE, BE IT ORDAINED BY THE BOARD OF COUNTY COMMISSIONERS OF SEMINOLE COUNTY, FLORIDA:**

**Section 1. Legislative Findings.** The above recitals are true and correct in form and include legislative findings which are a material part of this Ordinance.

**Section 2. Text Amendment.** The text of the Plan is hereby amended as set forth in Exhibit A (attached hereto and incorporated herein by this reference) as noted in the following table:

<b>Ordinance Exhibit</b>	<b>Amendment Topic</b>	<b>Amendment Number</b>	<b>Amended Elements</b>	<b>LPA Hearing Date</b>	<b>BCC Hearing Date</b>
A	Capital Improvements Element - 2007 Update	07EX2.TXT01	Capital Improvements	Not required	12/11/07

**Section 3. Severability.**

(a) The enactment of this Ordinance includes one (1) text amendment.

(b) If any provision of this Ordinance or the application thereof to any person or circumstance is held invalid, it is the intent of the Board of County Commissioners that the invalidity shall not affect other provisions or applications of this Ordinance which can be given effect without the invalid provision or application, and to this end the provisions of this Ordinance are declared severable.

**Section 4. Exclusion From County Code/Codification.**

(a) It is the intent of this Board that the provisions of this Ordinance shall not be codified into the Seminole County Code, but that the Code codifier shall have liberal authority to codify this Ordinance as a separate document or as part of or as a volume of the Land Development Code of Seminole County in accordance with prior directions given to the said Code codifier.

(b) The Code codifier is hereby granted broad and liberal authority to codify and edit the provisions of the Seminole County Comprehensive Plan, as amended.

**Section 5. Effective Date.**

(a) A certified copy of this Ordinance shall be provided to the Florida Department of State by the Clerk of the Board of County Commissioners in accordance with State law.

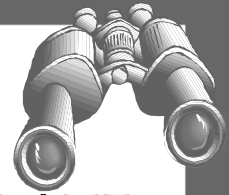
(b) This Ordinance shall take effect upon filing a copy of this Ordinance with the Florida Department of State by the Clerk of the Board of County Commissioners; provided, however, that the effective date of the Plan amendments set forth herein shall be twenty-two (22) days after the Florida Department of Community Affairs' publication of a notice of intent to find the Plan amendments in compliance if no affected party challenges the Plan amendments, or, if an affected party challenges the Plan amendments, when a final order is issued by the Florida

Department of Community Affairs or the Administration Commission determining that the amendments are in compliance in accordance with Section 163.3184, Florida Statutes, whichever occurs earlier. No development orders or development permits, if dependent upon an amendment, may be issued or commence before an amendment has become effective. If a final order of noncompliance is issued by the Administration Commission adopting a resolution affirming its effective status, a copy of which resolution shall be provided to the Florida Department of Community Affairs, Bureau of Local Planning, 2555 Shumard Oak Boulevard, Tallahassee, Florida 32399-2100 by the Clerk of the Board of County Commissioners.

**ENACTED** this 11 day of December, 2007.

BOARD OF COUNTY COMMISSIONERS  
SEMINOLE COUNTY, FLORIDA

By:   
Brenda Carey, Chairman

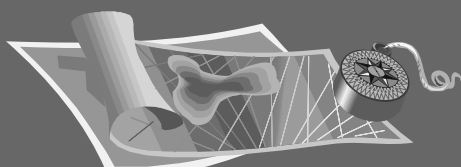


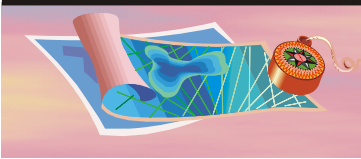
## **EXHIBITS – ANNUAL CIE UPDATE**

- **Introduction to Annual CIE Update**
- **Financial Feasibility Statement**
- **Facility LOS - All Facilities**
- **Facility LOS - Drainage**
- **Facility LOS - County Roads**
- **Facility LOS - State Highways Criteria**
- **Facility Program - Drainage**
- **Facility Program - Libraries**
- **Facility Program - Potable Water/Sanitary Sewer**
- **Facility Program - Public Safety**
- **Facility Program - Recreation and Open Space**
- **Facility Program - Solid Waste**
- **Facility Program - Transportation: Mass Transit**
- **Facility Program - Transportation: Roads**



# VISION 2020





# Vision 2020 Comprehensive Plan Seminole County, Florida

## CAPITAL IMPROVEMENTS ELEMENT

### Introduction to the Annual CIE Update - FY 2007/08 – 2011/12

#### ANNUAL UPDATE TO THE CAPITAL IMPROVEMENTS ELEMENT

Per sub-section 163.3177 F.S., (3)(b)1 - "The capital improvements element shall be reviewed on an annual basis and modified as necessary in accordance with s. 163.3187 or s. 163.3189 in order to maintain a financially feasible 5-year schedule of capital improvements. "Additionally, the sub-section notes: "Amendments to implement this section must be adopted and transmitted no later than December 1, 2008."

This amendment to the Capital Improvements Element (CIE) updates the projected service demand and available/planned capacity for each of the facility elements as well as the list of capital projects during the next five year period of Fiscal Years 2007/08 to 2011/12. The amendment also includes a Financial Feasibility exhibit.

Due to the extensiveness of each year's update, the annual update amendment replaces entirely the previous CIE Exhibits section of the adopted Capital Improvements Element (CIE), without strikethrough and underline except for the Introduction.

#### PURPOSE OF THE CAPITAL IMPROVEMENTS ELEMENT

The primary purpose of the annual update to the CIE is to adopt a five year, financially feasible, schedule of capital improvements for each facility element. These improvements address the expansion of facility capacity to meet projected demands as well as the ongoing maintenance of the County's ability to deliver service at the adopted Level of Service standards. Additionally, the CIE can serve to identify funds dedicated to the achievement of other adopted element policies and program goals. In preparing the document, staff evaluates program and project costs, reviews revenue sources and projections to ensure adequacy to cover the five year period and reviews facility services to ensure maintenance of the adopted Level of Service standards. Following this introduction is a statement attesting to the financial feasibility of the five-year CIE program.

Seminole County's Comprehensive Plan is comprised of the facility elements specified in Rule 9J-5, Florida Administrative Code as well as two optional elements (see list below). The elements are designed to ensure that the County's growth management plan is supported by adequate services and infrastructure in a timely fashion. The CIE provides an assurance of effective facility element implementation by adopting a financially feasible 5-year schedule of improvements for each type of facility, and by measuring whether those improvements are adequate to meet current and projected demands covering the 5-year period. (Note that the Natural Groundwater Aquifer Recharge is addressed in the Conservation and Future Land Use Elements with capital projects being incorporated in the Drainage, Potable Water, Sanitary Sewer or Transportation-Roads capital project programs.)

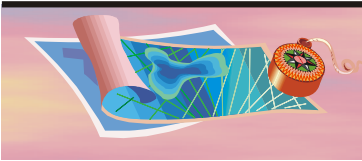
#### A Required Elements:

- 1 Drainage
- 2 Potable Water
- 3 Recreation & Open Space
- 4 Sanitary Sewer
- 5 Solid Waste
- 6 Transportation

#### B Optional Elements – Not part of the Concurrency Management System:

- 1 Libraries





# Vision 2020 Comprehensive Plan Seminole County, Florida

## 2 Public Safety (Fire/Rescue)

### DESCRIPTION OF THE UPDATED EXHIBIT SECTIONS

The update consists of four sections – an Introduction, Financial Feasibility, Facility Level of Service and Facility Programs:

#### Introduction to the Annual CIE Update

This section sets out the purpose and requirements of the update, describes how the update is presented, how amended, and makes any special notes of interest.

#### Financial Feasibility Statement

This section contains a statement of financial feasibility detailing how this will be demonstrated starting with the 2008 CIE Update.

#### Facility Level of Service Descriptions

This section identifies for each element the facility type, service area and adopted levels of service.

#### Facility Program Description - Consisting of three parts to each element:

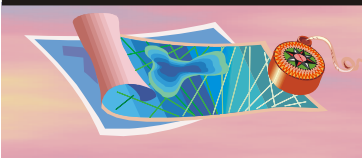
- A The “Summary of Policies, Programs and Capital Improvements with Cost Impacts” is a program description summarizing the overall capital program of the facility and identifies funding sources and any special issues faced by the facility. **Note:** The former Trails section of the Transportation Facility Program has been moved to and incorporated into the Recreation and Open Space Facility Program.
- B The “Capacity/Improvements Summary” reports current and projected capacity and service demand figures based on the most recently adopted socioeconomic data series. This provides a check on whether any facility deficiencies are projected within the five year planning period. **Note:** Demand figures are always those of the year prior to the start of the five (5) year CIE planning period. This is necessary to have the time to calculate whether any deficiencies exist using the update socio-economic data (population and employment by traffic analysis zone), and then address those deficiencies during the following year’s budget cycle for inclusion in the amendment update to the CIE. For the CIE planning period of FY 2007/08 – 2011/12, the year used to base service demand on is 2006.
- C The “Five Year Capital Schedule of Improvements” section lists the major capital projects and the dollars allotted to their implementation over the coming five year planning period. During the annual CIE amendment process, capital project schedules and funding sources are subject to continuing adjustment to reflect management and funding strategies developed in conjunction with preparation and adoption of each Annual Budget. Once the budget is adopted (September of each year), rebudgets of projects appropriated in the prior fiscal year are incorporated for the final adoption hearing of the CIE Update. By this means, the first year of the CIE is always consistent with the adopted annual budget for that year.

### SPECIAL NOTES FOR THE FY 2007/08 – 2011/12 UPDATE

- A **Water Supply Facilities Work Plan** - This update includes the capital projects noted in the November 13, 2007, amendment to the Potable Water Element to incorporate a Water Supply Facilities Work Plan. The particular projects noted in that amendment are noted by the letters “WSP” attached to their project number.
- B **Solid Waste Level Of Service Update** - Within the “Facility Level of Service Descriptions” section, the adopted level of service (LOS) for the Solid Waste Element as shown in *Exhibit CIE: Facility LOS - All Facilities* has been amended to cover the time period from FY 2007/08 through the next Evaluation and Appraisal Report (EAR) due in 2013.







# Vision 2020 Comprehensive Plan Seminole County, Florida

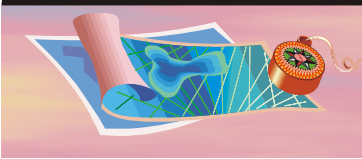
Based on the most current data and analysis which shows that land fill and transfer station capacity will be adequate beyond the planning horizon of 2025, there is no reason to update annually these figures. These LOSs will be reviewed and updated in conjunction with the next EAR based amendments and a determination made as to whether the seven (7) year update cycle remains adequate.

## **SUPPORT DOCUMENT UPDATE**

CIE Element support material provided in support of this amendment contains the socioeconomic data used in evaluating each facility's projected service demand and tables demonstrating the calculation.

(Revised: Amendment 07EX2.TXT01; Ordinance 2007-46, 12/11/2007)





# Vision 2020 Comprehensive Plan Seminole County, Florida

## Financial Feasibility Statement

Section 163.3177, sub-section (3)(b)1, F.S., establishes December 1, 2008, as the date by which each jurisdiction shall provide a demonstration of financial feasibility for its five-year capital improvements plan. The definition requires that sufficient revenues are currently available or will be available to fund the projected costs of the capital improvements identified in County's five year Capital Improvements Element (CIE) and ensure that adopted level-of-service standards are achieved.

Seminole County will make use of the following revenues to fund the capital projects of the Comprehensive Plan's facility elements for fiscal years 2007/08 – 2011/12.

Committed revenues for the first two years, FY 2007/08 – 2008/09, include:

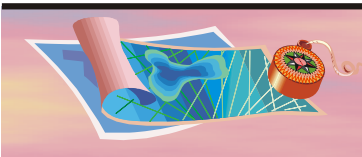
- Ad Valorem and other general revenues
- Impact Fees/Utility Connection Fees
- Users Rates and Charges
- Infrastructure Sales Tax
- Locally Imposed Gas taxes
- Bond Proceeds

Committed and planned revenues for the final three years, FY 2009/10 – 2011/012, include:

- Ad Valorem and other general revenues
- Impact Fees/Utility Connection Fees
- Users Rates and Charges
- Infrastructure Sales Tax
- Locally Imposed Gas taxes
- Bond Proceeds

A demonstration of financial feasibility of the annual five-year CIE in a manner that can easily be understood will be included with the 2008 CIE Update.





# Vision 2020 Comprehensive Plan Seminole County, Florida

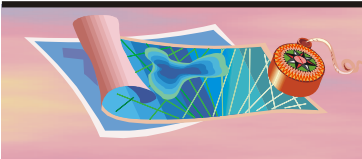
## Facility LOS - All Facilities

<b>Plan Element</b>	<b>Facility Type</b>	<b>Service Area</b>	<b>Adopted Level of Service</b>
<b>Drainage</b>	Drainage Structures Water Quality	By Basin, Countywide	see Exhibit CIE: Facility LOS - Drainage see Exhibit CIE: Facility LOS - Drainage
<b>Library Services</b>	Library System Collection	Countywide (less Alt. Springs)	1.0 Book/Capita
<b>Potable Water</b>	County Water Treatment Plants	Service to portions of the unincorporated area and cities	350 Gallons/Day ERC
<b>Public Safety</b>	Fire/Rescue Units	Unincorporated Area	5 Minute Unincorporated Area Average Response Time
<b>Recreation and Open Space</b>	Urban Community Parks - Land and Facilities	Countywide	3.6 total acres/1,000 population 1.8 developed acres/1,000 population
<b>Sanitary Sewer</b>	County Wastewater Treatment Plants	Service to portions of the unincorporated area and cities	300 Gallons/Day/ERC
<b>Solid Waste</b>	County Landfill	Countywide	LOS for 2007/08 - 2011/12 4.2 lbs/capita/day
	County Transfer Station	Countywide	LOS for 2007/08 - 2011/12 4.3 lbs/capita/day
<b>Transportation</b>	County Arterial and Collector Roads 2-lane, 4-lane, 6-lane	Vary by Character Area: Rural, Mixed Use Centers, Development Corridors and Neighbor- hoods	Daily/Peak Hour  Per Transportation Element Policies for facilities impacted by Mixed Use Center traffic and facilities in Special Transportation Areas, facilities parallel to exclusive transit or toll facilities, physically or policy constrained facilities, backlogged facilities and other facilities.
	State Roads	County -wide	Per Transportation Element (FIHS per FDOT LOS Criteria Tables)
	(See Facility LOS - Seminole County Roads		and State Highways Criteria on pages 7 and 8)
	Mass Transit System	Transit Service Area	1.03 revenue miles/capita translating the annual revenue miles standards as: 1.5219/Single-Family dwelling units 1.1255/Multi-Family dwelling units 1.3162/Hotel-Motel room 3.1164/Retail employee 0.4266/ Non-Retail employee

(Facility LOS - All Facilities.xls)

**ENTIRE PAGE TO BE CONSIDERED UNDERLINED**





# Vision 2020 Comprehensive Plan Seminole County, Florida

## Facility LOS – Drainage

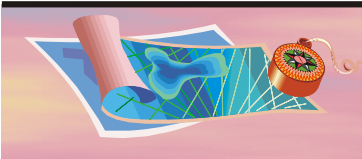
### Level of Service Standards for New Development

<u>Facility</u>	<u>Design Storm</u>
Retention/Detention Basins (with positive outfall) - Sites and Subdivisions	25 Year, 24 Hour
Retention /Detention Basins (Landlocked with no positive outfall)	100 Year, 24 Hour (Total Retention)
Retention/Detention Basins - Adjacent to a public right-of-way with no positive outfall	25 Year, 24 Hour (Total Retention)
Closed Drainage System (Internal to Development)	10 Year, 3 hour
Roadside Swales	10 Year, 3 hour
Arterial and Collector Streets	10 Year, Hydraulic Gradient Line - 1.0 feet below gutter line
Local Streets	10 Year, Hydraulic Gradient Line - 0.5 feet below gutter line
Canals	25 Years
Bridges - The design frequency may be increased if found necessary by the Manager of the Development Review Division to protect upstream or downstream properties.	100 Years

Note: See the Drainage Element for additional policies relating to standards and new development.

**ENTIRE PAGE TO BE CONSIDERED UNDERLINED**





# Vision 2020 Comprehensive Plan Seminole County, Florida

## Facility LOS – Seminole County Roads

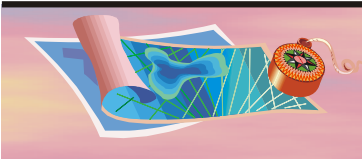
Arterials and Collectors  
Generalized Maximum Service Volumes  
Interim (5-Year) Planning Application

LOS Level	Lanes		
	2	4	6
A	13,640		
B	14,620	19,152	
C	15,530	25,537	
D (1)	17,800	32,320	48,520
E (2)	19,360	42,560	63,840
RURAL D	15,000	38,000	57,000

- (1) For Facilities Outside of Urban Center Traffic Impact Areas.  
(2) For Facilities Inside of Urban Center Traffic Impact Areas.

**ENTIRE PAGE TO BE CONSIDERED UNDERLINED**





# Vision 2020 Comprehensive Plan Seminole County, Florida

## Facility LOS - State Highways Criteria

### Rural Areas and Areas Less Than 5,000 Population

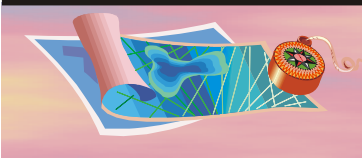
<u>LOS</u>	<u>Freeways</u>	<u>Multi-Lane Arterials</u>	<u>Two-Lane Highways</u>		<u>Interrupted Arterials</u>
			<u>55 mph (v/c)</u>	<u>45 mph (v/c)</u>	
<u>(measure)</u>	<u>(v/c)</u>	<u>(v/c)</u>	<u>(average travel speed)</u>		
<u>LOS A</u>	<u>≤0.35</u>	<u>≤0.30</u>	<u>≤0.12</u>	<u>≤0.09</u>	<u>≤42 mph</u>
<u>LOS B</u>	<u>≤0.54</u>	<u>≤0.54</u>	<u>≤0.24</u>	<u>≤0.21</u>	<u>≤34 mph</u>
<u>LOS C</u>	<u>≤0.77</u>	<u>≤0.71</u>	<u>≤0.39</u>	<u>≤0.36</u>	<u>≤27 mph</u>
<u>LOS D</u>	<u>≤0.93</u>	<u>≤0.87</u>	<u>≤0.62</u>	<u>≤0.60</u>	<u>≤21 mph</u>
<u>LOS E</u>	<u>≤1.00</u>	<u>≤1.00</u>	<u>≤1.00</u>	<u>≤1.00</u>	<u>≤16 mph</u>
<u>LOS F</u>	<u>&gt;1.00</u>	<u>&gt;1.00</u>	<u>&gt;1.00</u>	<u>&gt;1.00</u>	<u>&gt;16 mph</u>

### Urbanized Areas, Transitioning Areas, and Areas over 5,000 Population

<u>LOS</u>	<u>Freeways</u>	<u>Uninterrupted Multi-Lane</u>	<u>Two-Lane Arterials</u>		
			<u>Class</u>		
			<u>I</u>	<u>II</u>	<u>III</u>
<u>(measure)</u>	<u>(v/c)</u>	<u>(v/c)</u>	<u>(average travel speed)</u>		
<u>LOS A</u>	<u>≤0.35</u>	<u>N/A</u>	<u>≤35 mph</u>	<u>≤30 mph</u>	<u>≤25 mph</u>
<u>LOS B</u>	<u>≤0.54</u>	<u>≤0.45</u>	<u>≤28 mph</u>	<u>≤24 mph</u>	<u>≤19 mph</u>
<u>LOS C</u>	<u>≤0.77</u>	<u>≤0.60</u>	<u>≤22 mph</u>	<u>≤18 mph</u>	<u>≤13 mph</u>
<u>LOS D</u>	<u>≤0.93</u>	<u>≤0.76</u>	<u>≤17 mph</u>	<u>≤14 mph</u>	<u>≤9 mph</u>
<u>LOS E</u>	<u>≤1.00</u>	<u>≤1.00</u>	<u>≤13 mph</u>	<u>≤10 mph</u>	<u>≤7 mph</u>
<u>LOS F</u>	<u>&gt;1.00</u>	<u>&gt;1.00</u>	<u>&gt;13 mph</u>	<u>&gt;10 mph</u>	<u>&gt;7 mph</u>

Source: Information is extracted from both the 1995 and 1998 LOS Handbook Manuals.





# Vision 2020 Comprehensive Plan Seminole County, Florida

## Facility Program – Drainage

### Summary of Policies, Programs and Capital Improvements with Cost Impacts Drainage

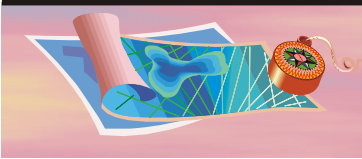
Scheduled Program and Cost Impacts for Fiscal Years 10/1/2007 - 9/30/2012	
<b>Major Work Efforts:</b>	
- TMDL Implementation	
- Primary and Secondary Drainage Facility Improvements	
- Subdivision Rehabilitations	
<b>Total 5 Year Cost</b>	<b>\$51,586,884</b>

Potential Additional Cost Impacts During/Beyond Five Year Planning Period
<ul style="list-style-type: none"> <li>· Implementation of water quality programs and deficiency corrections based on current NPDES permit.</li> <li>· Funding of the Total Maximum Daily Load (TMDL) program for Seminole County beginning FY2005/06 for NPDES Permit compliance in L. Jesup Basin and the additional 22 TMDL impaired lakes and water body segments soon to added in the 2008 basin planning phase and middle basin planning process.</li> </ul>

**Available Funding Options** - Major revenue sources available to the board of county commissioners (either existing or available without voter approval) to fund all or portions of the drainage capital improvement element update are: general fund, transportation trust fund, local option infrastructure sales tax fund (if major road system related), stormwater assessment. The current revenue capacities associated with each of the above major revenues provide sufficient funding to enable full implementation of the five year schedule of improvements identified as part of the CIE update, but since a large portion of the projects are funded by a general fund transfer to the stormwater funds, state imposed reductions in ad valorem, taxes will have a direct impact on the stormwater fund. In addition, federal/state/water management district funding partnership funding will continue to be aggressively pursued, but the agencies have made the county aware that other government entities with dedicated funding sources will have priority over Seminole County for future grant/cost share programs. State and water management district funding reductions are expected to result from both state budget reductions and ad valorem mandated cuts to the St Johns River Water Management District.

***ENTIRE PAGE TO BE CONSIDERED UNDERLINED***





# Vision 2020 Comprehensive Plan Seminole County, Florida

## Capacity/Improvements Summary

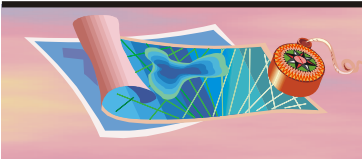
### Stormwater Program

The information below presents an overview of the Stormwater Program which provides for continuing basin evaluations, capital improvements, initiation of water quality studies, and compliance with State and Federal regulations.

The following list of limited basin evaluations (due to funding reductions), studies, improvement projects, and equipment details the five year capital projects Stormwater Program adopted in the Capital Improvements Element. One of the primary goals of this program is to reduce system drainage deficiencies over time consistent with funding levels. Level of Service standards for Stormwater are adopted for various types of road and development facilities. Revised pre/post pollutant loading standards are expected to be put in place once a soon-to-be-adopted state-wide water rule is rewritten, likely 2008/09.







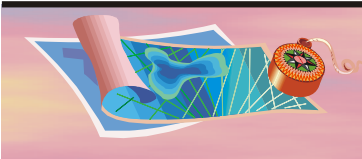
# Vision 2020 Comprehensive Plan Seminole County, Florida

## Five Year Capital Schedule of Improvements

Project #	Project Title	FY 2008	FY 2009	FY 2010	FY 2011	FY 2012
00008002	Econlockhatchee River Basin TMDL Implementation	-	-	800,000	900,000	990,000
00008301	Wekiva River Basin Study	-	-	800,000	900,000	990,000
00008302	Sweetwater Cove Tributary	1,533,444	-	-	-	-
00009001	Lake Jesup Basin Study	-	-	800,000	900,000	990,000
00009202	Little Econ / Crane Strand (JPP)	246,897	-	-	-	-
00012002	Howell Creek Basin Drainage I	-	-	800,000	900,000	990,000
00174503	SR 434 Sedimentation Basin	1,087,561	-	-	-	-
00202402	Lockhart Smith Canal / Acquisition & Improvement	132,233	-	-	-	-
00202404	Six Mile Canal Phase I Channel Improvements	70,000	350,000	500,000	-	-
00202405	Lightwood Knot Canal - Phase I	150,000	1,250,000	1,250,000	1,000,000	-
00203002	Elder Creek / C-15 Pond	363,091	-	-	-	-
00209102	Anchor Road Drainage Improvement	2,140,029	-	-	-	-
00209103	Lake Howell Road - design	85,365	-	-	-	-
00209105	Curryville Rd Culverts	550,000	-	-	-	-
00209106	Wekiva Park Drive	400,000	-	-	-	-
00209108	Lincoln Heights Drainage Improvements	950,000	2,000,000	-	-	-
00209110	West Crystal Dr. Drainage Improvements	-	300,000	600,000	-	-
00209112	Road Related Projects (minor projects cont.)	-	-	1,050,000	1,050,000	1,050,000
00209113	Red Bug Lake Rd Outfall Drainage Improvements	1,275,242	-	-	-	-
00209114	Red Bug Lake Rd at Howell Creek Erosion Control	350,000	200,000	1,600,000	-	-
00228301	Sylvan Lake Outfall / Lake Level Control	2,130,000	-	-	-	-
00229001	Cassel Creek Stormwater Facility	400,000	-	1,700,000	-	-
00229104	Alexander Ave	4,812	-	-	-	-
00229106	Paradise Pt Subdivision Drainage Improvements	760,000	-	-	-	-
00229109	Praire Lake Outfall Improvements	173,000	-	-	-	-
00229114	East Settler Loop	90,000	250,000	-	-	-
00229115	SR 426 at Aloma Woods Conveyence Improvements	366,500	-	600,000	-	-
00233801	CLUB II REGIONAL STORMWATER FACILITY/JPP	286,332	-	-	-	-
00234502	Markham Woods Road & Drainage Improvements	75,000	-	-	-	-
00241501	Middle Basin Preliminary Engineering	-	-	130,000	223,250	223,250
00241701	Midway Regional Stormwater Facility (IFAS)/Joint Participar	2,600,000	-	-	-	-
00241801	Midway Regional Stormwater Facility (IFAS) Demolition	235,090	-	-	-	-
00242301	Bear Gully Drainage Improvements	300,000	650,000	-	-	-
00243001	Myrtle Lake Hills Drainage Improvements	213,124	-	-	-	-
00246201	Washington Heights Erosion Control	40,000	650,000	-	-	-
00255701	Subdivision Retrofit Program	345,000	425,000	1,050,000	1,050,000	1,050,000
00255713	Stillwater Drive (Subdivision Retrofit)	-	100,000	-	-	-
00255715	Rising Sun Boulevard (Subdivision Retrofit)	-	300,000	-	-	-
00255722	Eagle Circle (Subdivision Retrofit)	200,000	-	-	-	-
00255723	Hunt Lane (Subdivision Retrofit)	50,000	-	-	-	-
00255725	Wekiva Trail (Subdivision Retrofit)	275,000	95,000	-	-	-

**ENTIRE PAGE TO BE CONSIDERED UNDERLINED**



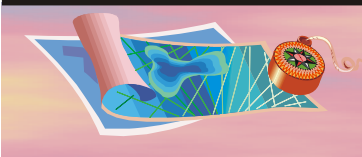


# Vision 2020 Comprehensive Plan Seminole County, Florida

Project #	Project Title	FY 2008	FY 2009	FY 2010	FY 2011	FY 2012
00255729	Shadow Creek Circle (Subdivision Retrofit)	-	100,000	-	-	-
00255730	Continental Boulevard (Subdivision Retrofit)	-	50,000	-	-	-
00255731	Courtland Loop Tuska Bay (Subdivision Retrofit)	-	25,000	-	-	-
00255732	Spring Valley Loop (Subdivision Retrofit)	-	50,000	-	-	-
00258301	Innovative Waste Management Grant	476,383	-	-	-	-
00258401	Lockhart Smith Canal Regional Stormwater Facility	358,144	-	-	-	-
00259501	Grace Lake Design Modeling	523,137	550,000	-	-	-
00277001	Lake Mary Boulevard at Sun Drive Secondary Drainage	120,000	-	-	-	-
Totals		19,355,384	7,345,000	11,680,000	6,923,250	6,283,250

**ENTIRE PAGE TO BE CONSIDERED UNDERLINED**





# Vision 2020 Comprehensive Plan Seminole County, Florida

## Facility Program - Libraries

### Summary of Policies, Programs and Capital Improvements with Cost Impacts Libraries

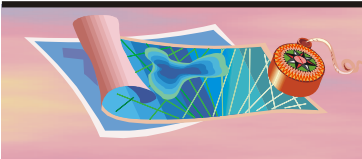
Scheduled Program and Cost Impacts for Fiscal Years 10/1/2007 - 9/30/2012	
Funding to continue to maintain collection size of 500,000 volumes +/- 10%. Includes books, annuals, periodicals and collection maintenance as needed, taking into account the changing electronic formats in which these items are produced. Cost impact encompasses updates to reference collection, customer requests and replacement of lost/stolen titles.	
<b>Total 5 Year Cost</b>	<b>2,904,225</b>

Potential Additional Cost Impacts During/Beyond Five Year Planning Period
In 1998, the BCC approved a phased budgetary plan to increase the number of books from 1.0 to 1.5 books per capita (excluding the population of Altamonte Springs which has its own library). This figure was reached in 2002 with the attainment of approximately 500,000 volumes. Due to insufficient space in the existing library buildings to hold additional volumes, the rate of 1.5 will decrease yearly as the county population increases. The rate of vols/capita would further decrease if the population of Altamonte Springs (36,390 cardholders) were added to the system as recommended by a consultant prepared Strategic Plan for the library done in 2000. The rate is not projected to drop below the Comprehensive Plan adopted level of service of 1.0 vols/capita within the long range planning period.

**Available Funding Options** - Major revenue sources available to the Board of County Commissioners (either existing or available without voter approval) to fund all or portions of the Libraries Capital Improvement Element Update are: general revenues, impact fees, proceeds from bonds backed by general revenues and various grants/contributions/donations. The revenue capacities associated with each of the above major revenues provide sufficient funding to enable full implementation of the five year schedule of improvements identified as part of the CIE Update.

**ENTIRE PAGE TO BE CONSIDERED UNDERLINED**





# Vision 2020 Comprehensive Plan Seminole County, Florida

## Capacity/Improvements Summary

### Libraries

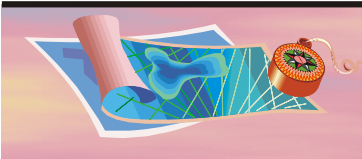
Year	Collection Volumes *
<b><u>CURRENT</u></b>	
2006 Available	510,317
2006 Demand *	<u>387,371</u>
Surplus (Deficiency)	122,946
<b><u>SCHEDULED FIVE YEAR IMPROVEMENTS</u></b>	
Added Volumes **	0
<b><u>FIFTH YEAR</u></b>	
2012 Total Available	510,317
2012 Demand *	<u>442,718</u>
Surplus (Deficiency)	67,599
<b><u>FUTURE</u></b>	
2025 Needed*	450,494

\* Based on maintaining adopted standard of 1.0 book/capita for countywide library service population excluding Altamonte Springs which maintains a municipal library.

\*\* Expansion of collection dependent upon expansion of space available.

**ENTIRE PAGE TO BE CONSIDERED UNDERLINED**





# Vision 2020 Comprehensive Plan Seminole County, Florida

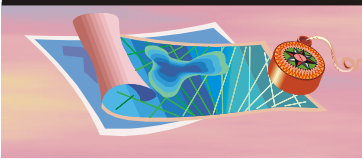
## Five Year Capital Schedule of Improvements

<b>Project #</b>	<b>Project Title</b>	<b>FY 2008</b>	<b>FY 2009</b>	<b>FY 2010</b>	<b>FY 2011</b>	<b>FY 2012</b>
00025001	Library Collection Replacement	758,075	758,075	758,075	-	-
00029801	Library Book Donations	10,000	10,000	10,000	-	-
00060301	Library Collection New Volume	200,000	200,000	200,000	-	-
	Totals	968,075	968,075	968,075	-	-

*(Facility Program - Library.xls)*

***ENTIRE PAGE TO BE CONSIDERED UNDERLINED***





# Vision 2020 Comprehensive Plan Seminole County, Florida

## Facility Program - Potable Water/Sanitary Sewer

### Summary of Policies, Programs and Capital Improvements with Cost Impacts Potable Water and Sanitary Sewer

Scheduled Program and Cost Impacts for Fiscal Years 10/1/2007 - 9/30/2012	
Among the projects scheduled for Environmental Services is expansion of the Yankee Lake Water Reclamation Facility to 5.0 million gallons a day (MGD) and expansion of the reclaimed system to include residential service in the Northwest area. Renewal requests for the NE and SE service area CUPs have been submitted and a consolidated CUP for all County service areas is under review by the SJRWMD. The projected figures in the water capacity and demand table have been accepted as part of the County's application for a global CUP. The table was also included in the Water Supply Facilities Plan amendment done in conjunction with the Regional Water Supply Plan. The Water Supply Facilities Work Plan was adopted on 11/13/2007.	
<b>Total 5 Year Water Cost</b>	<b>\$173,621,314</b>
<b>Total 5 Year Sewer Cost</b>	<b>\$103,165,688</b>
<b>Grand 5 Year Cost</b>	<b>\$276,787,002</b>

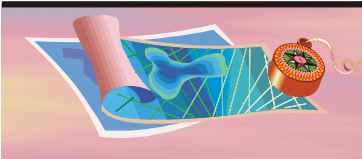
Potential Additional Cost Impacts During/Beyond The Five Year Planning Period
The required levels of treatment for sewer and water and programs needed to implement the treatment may change as the EPA continues research resulting in legislative amendments. Implementation of Master Plan recommendations has been initiated with the addition of several plant and distribution improvements.

**Available Funding Options** - Major revenue sources available to the Board of County Commissioners (either existing or available without voter approval) to fund all or portions of the Potable Water/sanitary Sewer Capital Improvement Element Update are: rates and charges collected from water & sewer system customers, connection fees, proceeds from bond issues backed by revenues of the system and various grant opportunities. The revenue capacities associated with each of the above major revenues provide sufficient funding to enable full implementation of the five year schedule of improvements identified as part of the CIE Update.

*(facility program potwater sansewer.xls)*

**ENTIRE PAGE TO BE CONSIDERED UNDERLINED**





# Vision 2020 Comprehensive Plan Seminole County, Florida

## Capacity/Improvements Summary

2005				
Water Service Areas (mgd)	Design Capacity (ADF) (1)	Permit SJRWMD Alloc (2)	Current Demand (ADF) (3)	Permit Surplus/Deficit
N West (4)	8.376	6.430	5.760	0.670
N East (4)(5)	3.709	3.020	2.280	0.740
S East (6)	13.233	9.154	8.470	0.684
S West	2.560	1.600	1.270	0.330
<b>TOTALS</b>	<b>27.878</b>	<b>20.204</b>	<b>17.780</b>	<b>2.424</b>
Blk Hmk (7)	0.175	NA	0.103	0.072
2010				
Water Service Areas (mgd)	Design Capacity (ADF) (1)	Permit SJRWMD Alloc (2)	Projected Demand (3)	Permit Surplus/Deficit
N West (4)	8.376	8.230	9.480	-1.250
N East (4)(5)	3.709	3.020	2.650	0.370
S East (6)	13.233	9.154	11.390	-2.236
S West	2.560	1.690	1.550	0.140
<b>TOTALS</b>	<b>27.878</b>	<b>22.094</b>	<b>25.070</b>	<b>-2.976</b>
Blk Hmk (7)	0.175	NA	0.129	0.046
2015				
Water Service Areas (mgd)	Design Capacity (ADF) (1)	Permit SJRWMD Alloc (2)	Projected Demand (3)	Permit Surplus/Deficit
N West (4)	8.376	8.230	10.860	-2.630
N East (4)(5)	3.709	3.020	3.120	-0.100
S East (6)	13.233	9.154	13.160	-4.006
S West	2.560	1.370	1.760	-0.390
<b>TOTALS</b>	<b>27.878</b>	<b>21.774</b>	<b>28.900</b>	<b>-7.126</b>
Blk Hmk (7)	0.175	NA	0.140	0.035
2020				
Water Service Areas (mgd)	Design Capacity (ADF) (1)	Permit SJRWMD Alloc (2)	Projected Demand (3)	Permit Surplus/Deficit
N West (4)	8.376	8.230	11.960	-3.730
N East (4)(5)	3.709	3.020	3.550	-0.530
S East (6)	13.233	9.154	14.430	-5.276
S West	2.560	1.370	2.010	-0.640
<b>TOTALS</b>	<b>27.878</b>	<b>21.774</b>	<b>31.950</b>	<b>-10.176</b>
Blk Hmk (7)	0.175	NA	0.151	0.024

1 Physical plant permitted average day capacity.

Rev. 2, Jan 25, 2007

Revision 2, Jan 25, 2007

2 Daily average pumping amount based on SJRWMD CUP permit allocation for the individual year and service area.

3 Projected demand is based historical flow information. Amounts have not been reduced due to reflect effects of proposed conservation or reclaimed water usage to offset use of potable water for irrigation. Current demand (2005) is consistent with the County's CUP application, which uses water demands from 9/1/04 – 8/31/05.

4 The Northwest and Northeast service areas are interconnected.

5 SJRWMD Northeast CUP expired November 30, 2003. Renewal application submitted to District. Previous allocation shown.

6 SJRWMD Southeast CUP expired December 31, 2003. Renewal application submitted to District. Previous allocation shown.

7 The Black Hammock Service Area is served through a wholesale contract with the City of Oviedo.

Note 1: Projected deficits are based on existing facility capacity and current conservation efforts.

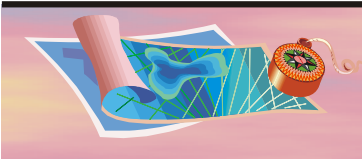
Note 2: Six small, built-out private water facilities were absorbed mid-2004

capacity/demand calculations beginning with the 2007 CIE.

(WSP Exhibit1.xls)

**ENTIRE PAGE TO BE CONSIDERED UNDERLINED**





# Vision 2020 Comprehensive Plan Seminole County, Florida

## Sanitary Sewer

Sewer Service Areas (mgd)	2006			2012			2025
	Permit Capac (1)	Current Demand (ADF) (5)	Surplus/ (Deficit)	Permit Capac (1) (4)	Projected Demand (2)	Surplus/ (Deficit)	Projected Demand (ADF)
NW/NE (3)	6.000	3.990	<b>2.010</b>	7.000	5.802	<b>1.198</b>	6.390
S East	8.506	4.940	<b>3.566</b>	8.506	6.440	<b>2.066</b>	7.709
S West	0.855	0.522	<b>0.333</b>	0.855	0.071	<b>0.784</b>	0.748
<b>TOTALS</b>	15.361	9.452		16.361	12.313		14.847

1 Design and permitted capacity.

2 Projected demand is based on the level of service standard of 300 gal/day/unit.

3 Northwest and Northeast service areas are interconnected. NW 2.5mgd and NE 3.5mgd

4 Based on approval of submitted request for re-rating of Yankee Lake and Greenwood Lakes treatment plants.

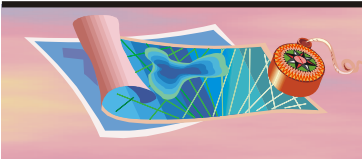
Source: Seminole County Environmental Services (07/2007)

(potwater sansewer.xls)

**ENTIRE PAGE TO BE CONSIDERED UNDERLINED**







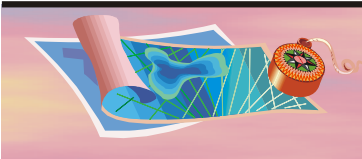
# Vision 2020 Comprehensive Plan Seminole County, Florida

## Five Year Capital Schedule of Improvements

Elmt	Project # *	Project Title	FY 2008	FY 2009	FY 2010	FY 2011	FY 2012
POT	00021701WSP	Oversizings & Extensions	240,820	1,953,450	2,051,156	2,261,399	2,300,000
SAN	00024803WSP	Telemetry & SCADA System Improvements	329,972	156,276	164,093	180,914	180,000
POT	00056601WSP	Potable Water Treatment Plant Rehabilitation	787,029	803,122	1,558,879	1,718,664	1,500,000
POT	00064501WSP	Potable Water Distribution System Improvements	1,109,313	289,400	303,875	335,025	350,000
POT	00064606WSP	East Lake Drive Potable Water Main	91,612	-	-	-	-
POT	00064702	Lockwood Road Potable Water Main	188,367	-	-	-	-
POT	00065101WSP	Lake Emma Road Utility Replacement/Upgrade	2,026,906	-	-	-	-
POT	00065201WSP	Potable Water Replacements for Minor Roads	763,038	578,800	607,750	670,044	700,000
POT	00067201WSP	Monroe Rd (CR 15) Utilities Replacement	1,073,531	-	-	-	-
SAN	00082904	Pump Station Upgrades	3,343,432	231,520	243,100	268,020	275,000
SAN	00083101	Collection System Enhancements	724,323	57,880	60,775	67,005	175,000
POT	00115701WSP	Chemical Feed Systems Rehabilitation	647,265	-	60,775	67,005	75,000
POT	00164301WSP	Yankee Lake Regional Surface Water Facility Design	1,980,660	-	-	-	-
SAN	00164501WSP	Eastern Regional Reclaimed Water System	1,256,535	-	-	-	-
SAN	00164601WSP	City Of Oviedo/Seminole County Reclaimed Water Syst	210,255	-	-	-	-
POT	00168801WSP	Southeast Service Area Potable Water Main Ph II	3,340,372	-	-	-	-
POT	00178101WSP	Bunnel Road Potable Water Main Replacement	300,050	-	-	-	-
POT	00178301WSP	Country Club Well #3	598,988	-	-	-	-
SAN	00181201WSP	Yankee Lake Road/SR 46 Reclaimed Water Transmissior	1,242,010	-	-	-	-
POT	00181601WSP	Yankee Lake Regional Surface Water Plant Construction	42,020,895	-	-	-	-
SAN	00182301WSP	Markham Woods Road Reclaimed	3,786,013	-	-	-	-
SAN	00182901WSP	Greenwood Lakes Reclaimed Water Ground Storage Tai	148,890	-	-	-	-
POT	00193101WSP	Markham Woods Road Utilities	188,515	-	-	-	-
POT	00193301WSP	Lake Monroe Water Treatment Plant Rehabilitation	1,178,012	-	-	-	-
POT	00193601WSP	Bear Lake Woods Road Potable Water Main Interconne	330,405	-	-	-	-
POT	00194101WSP	Automated Valve Improvements	88,575	115,760	121,550	134,010	-
POT	00194501	Yankee Lake Regional Chlorine Contact Replacement	-	138,912	9,724,000	-	-
SAN	00194901	Sand Lake Road Force Main Replacement	115,186	-	-	-	-
SAN	00195201WSP	Yankee Lake Water Reclamation Facility Expansion	15,098,064	-	-	-	-
POT	00195401WSP	Country Club Water Treatment Plant- Ground Storage T	-	694,560	-	-	-
POT	00195501WSP	Potable Water Quality - Distribution System Improveme	62,187	5,788,000	4,862,000	4,690,350	4,700,000
POT	00195701WSP	Potable Water Quality - Treatment Plant Improvements	1,122,708	11,576,000	12,155,000	13,401,000	-
SAN	00199901	Greenwood Lakes Water Reclamation Facility - Sludge F	256,531	-	-	-	-
POT	00200401WSP	Markham Water Treatment Plant Aquifer Storage & Rec	121,075	-	-	-	-
SAN	00200501WSP	Critical Well Sites/Lift Stations - Emergency Power Syster	-	405,160	-	-	-
SAN	00200901WSP	AAA Drive Reclaimed Water Main	560,868	-	-	-	-
POT	00201101WSP	Consumptive Use Permit Consolidation	176,872	-	-	-	-
SAN	00201201	Critical Lift Stations Emergency Power Upgrades	414,352	347,280	364,650	402,030	400,000
POT	00201501WSP	Potable Well Improvements	255,638	231,520	243,100	268,020	300,000
POT	00203101WSP	Security Improvements/Enhancements	487,797	131,520	243,100	268,020	-
POT	00203201WSP	Potable Water Distribution System Upgrade- FL Wtr Aq	1,939,285	2,877,107	-	-	-

**ENTIRE PAGE TO BE CONSIDERED UNDERLINED**





# Vision 2020 Comprehensive Plan Seminole County, Florida

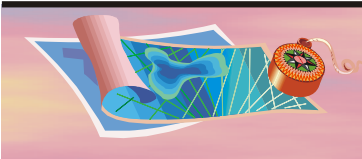
Elmt	Project # *	Project Title	FY 2008	FY 2009	FY 2010	FY 2011	FY 2012
POT	00203301WSP	Potable Water Treatment Plant Upgrade - FL Water Aqu	1,058,219	1,874,187	-	-	-
POT	00203401WSP	Hanover Woods Water Treatment Plant- Ground Stora	-	187,531	461,890	-	-
POT	00203801WSP	Fern Park Water Distribution System Improvements	264,293	-	-	-	-
SAN	00203901	Apple Valley Pump Station Replacement	164,909	-	-	-	-
POT	00204001	Tri-Party Optimization Program	1,011,907	-	-	-	-
POT	00207801WSP	Orange Boulevard Utilities	3,417,377	-	-	-	-
POT	00212901WSP	Southwest Area Potable Water Main Replacements	-	277,824	-	-	-
POT	00214701WSP	Rising Sun Boulevard Potable Water Main	116,225	-	-	-	-
POT	00214801WSP	Dodd Road Potable Water Main Phase II	-	57,880	883,958	-	-
SAN	00216401	Iron Bridge Improvements	558,227	-	-	-	-
POT	00216501WSP	Elder Road / Orange Boulevard Potable Water Main	2,699,810	-	-	-	-
POT	00216601WSP	Markham Regional Water Treatment Plant Improvement	1,713,150	-	-	-	-
POT	00216701WSP	Markham Water Treatment Plant -Forced Draft Aeration	2,864,295	-	-	-	-
POT	00216901WSP	Long Pond Road / Markham Woods Road Potable Wate	750,448	-	-	-	-
SAN	00217101WSP	Heathrow Boulevard Reclaimed Water Main	2,829,571	-	-	-	-
SAN	00217201WSP	Residential Reclaimed Water Main Retrofit Phase II	6,417,763	-	-	-	-
SAN	00217301WSP	Residential Reclaimed Water Main Retrofit Phase I	942,048	-	-	-	-
SAN	00217401WSP	Longwood Markham Road Utility Improvements	6,876,600	-	-	-	-
SAN	00217601WSP	Northwest Reclaimed Water System Augmentation Well	472,562	-	-	-	-
POT	00217701	Orange Boulevard Replacement and Upgrades	2,856,127	-	-	-	-
SAN	00217801WSP	Markham Reclaimed Water Storage & Repump Facility	2,361,956	2,315,200	-	-	-
SAN	00218001	Sylvan Lake/ Markham Force Main	196,746	1,669,729	-	-	-
SAN	00218301	Northwest Service Area Collection System Improvement	48,915	578,800	-	-	-
SAN	00219701	SR 46 Force Main Extension	-	7,525,272	-	-	-
SAN	00223001WSP	Residential Reclaimed Water Main Retrofit Phase III	353,317	7,686,230	-	-	-
SAN	00223101WSP	Residential Reclaimed Water Main Retrofit Phase IV	382,348	13,450,923	-	-	-
SAN	00223201WSP	Residential Reclaimed Water Main Retrofit Phase V	-	10,221,262	-	-	-
SAN	00227401	Greenwood Lakes Wastewater Treatment Plant Improve	3,178,713	578,800	-	-	-
POT	00243301WSP	Greenwood Lakes RIB Site Potable Water Booster Statio	-	731,520	-	-	-
SAN	00247901WSP	Orange Boulevard Reclaim Main	2,203,631	-	-	-	-
POT	00249801WSP	CRA Fern Park Utilities	136,687	-	-	-	-
SAN	00253701	Liftstation Odor Control	125,196	156,276	121,550	134,010	150,000
POT	00254201WSP	I-4 at 17/92 Ramp B-1 Interchange Utilities Replacemen	290,198	-	-	-	-
		Potable Water Totals	78,298,651	28,307,093	33,277,033	23,813,537	9,925,000
		Sanitary Sewer Totals	54,598,933	45,380,608	954,168	1,051,979	1,180,000
		Grand Totals	132,897,584	73,687,701	34,231,201	24,865,516	11,105,000

\*WSP - Water Supply Plan Project

(CIE Export Formatted.xls)

**ENTIRE PAGE TO BE CONSIDERED UNDERLINED**





# Vision 2020 Comprehensive Plan Seminole County, Florida

## Facility Program - Public Safety

### Summary of Policies, Programs and Capital Improvements with Cost Impacts Public Safety

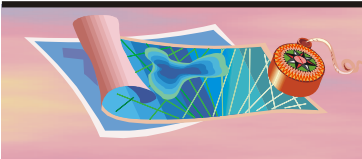
Scheduled Program and Cost Impacts for Fiscal Years 10/1/2007 - 9/30/2012	
<ul style="list-style-type: none"> <li>Scheduled program and cost impacts include apparatus replacement, facility renovations, land purchase, station construction and purchase of an emergency training center. Apparatus replacement is conducted within fleet recommendations.</li> <li>Facility renovations are to meet ADA compliance. Station construction costs are identified based on population growth, development and required response times.</li> </ul>	
<b>Total 5 Year Cost</b>	<b>\$26,520,967</b>

Potential Additional Cost Impacts During/Beyond Five Year Planning Period
<ul style="list-style-type: none"> <li>The need for additional capital facilities such as engines, squads, rescues, stations and their associated costs to maintain an average response time of 5 minutes will be evaluated yearly in conjunction with other technologies and service provision strategies such as vehicle and/or station relocation and shared service areas.</li> <li>The National Fire Protection Association Standard 1710 has recently introduced new guidelines for fire departments. This is a voluntary standard for compliance, but may prove to have costing elements beneficial to providing service.</li> <li>Continued fire service mergers could present cost impacts. Though each merger would be entered into with the intent to save in overall cost, unforecasted costs could emerge.</li> <li>An emergency training site has been purchased and a multi-year implementation/development plan is underway.</li> <li>Continued high fuel costs would significantly impact future budgets.</li> <li>Potential unfunded mandates re: Water Management District intervention and training costs.</li> <li>If homestead allowance increase is passed, impact on service revenue would be significant.</li> </ul>

**Available Funding Options** - Major revenue sources available to the Board of County Commissioners (either existing or available without voter approval) to fund all or portions of the Public Safety Capital Improvement Element Update are: special district ad valorem assessments, non-ad valorem assessments, impact fees, rates and charges for direct billed services and various grants/contributions/donations. The revenue capacities associated with each of the above major revenues provide sufficient funding to enable full implementation of the five year schedule of improvements identified as part of the CIE Update.

**ENTIRE PAGE TO BE CONSIDERED UNDERLINED**





# Vision 2020 Comprehensive Plan Seminole County, Florida

## Capacity/Improvements Summary

### Public Safety

Year	County Response Units*
<b><u>CURRENT</u></b>	
2006 Available	31
2006 Demand**	<u>39</u>
Surplus (Deficiency)	-8
<b><u>SCHEDULED FIVE YEAR IMPROVEMENTS</u></b>	
New units ***	4
<b><u>FIFTH YEAR</u></b>	
2012 Available	35
2012 Demand	<u>45</u>
Surplus (Deficiency)	-10
<b><u>FUTURE</u></b>	
2025 Needed	51

\* Response units include staffed engines, rescue, squad and tower vehicles

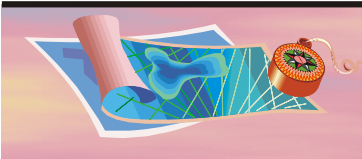
\*\* Demand is based on the 1996 service efficiency standard of 4,100 Equivalent Residential Units per response unit. This is not an adopted standard but serves as a guide for the number of units needed to maintain a five minute average response time. Methods to maintain the LOS are the following: 1. Continuing to adjust First Response agreements with each of the Cities to provide the best possible cost effective service delivery availability to the citizens of Seminole County and its municipalities. 2. Re-positioning units based on current operational loads and increasing the number and location of new fire stations. 3. Improving command and control technologies, such as the implementation of a new CAD system, associated improved station alerting and unit allocation along with completion of the traffic pre-emption system. 4. Meeting with other local and regional fire/emergency providers to create more efficient and useful measures of assessing what is necessary to maintain a targeted LOS is underway with the "Fire/Rescue Comprehensive System Assessment for Seminole County" being performed by the Matrix Company.

\*\*\* As new fire stations and expansions to existing stations are completed over the five-year planning period, up to 4 units are planned to be added. Consideration of the new, national guidelines for Fire/Rescue response standards plus re-evaluation of the service efficiency standard for calculating the needed number of vehicles will ultimately determine the number of units needed within the next five years.

(Facility Program - Public Safety.xls)

**ENTIRE PAGE TO BE CONSIDERED UNDERLINED**





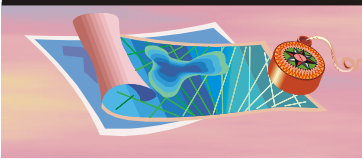
# Vision 2020 Comprehensive Plan Seminole County, Florida

## Five Year Capital Schedule of Improvements

Project #	Project Title	FY 2008	FY 2009	FY 2010	FY 2011	FY 2012
00012804	Traffic Preemption Devices (20)	50,000	50,000	50,000	50,000	50,000
00179301	Fire Station 13 - Forest City	70,335	-	-	-	-
00189301	Renovations To Fire Stations	1,287,706	186,900	-	-	-
00225001	Fire Station 39 - Yankee Lake	-	-	-	1,200,000	2,300,000
00249501	Fire Station 19 - Greenwood Lakes	2,500,000	2,500,000	-	-	-
00256001	Fire Station 27 Expansion	439,186	-	-	-	-
00258001	Fire Station 29 - Aloma Avenue	5,750,000	-	-	-	-
00274301	Relocation Fire Station 23	-	-	2,000,000	2,500,000	-
00274601	Consumer Premise Equipment (CPE)	1,700,000	600,000	300,000	300,000	300,000
00561002	Req-0079 Quantum Fire Engine BCC 4132	492,200	-	-	-	-
00561003	Req-0082 Transport Capable Rescue Vehicle	288,000	-	-	-	-
00561004	Req-0158 Quantum Fire Engine - Pierce - Station # 29	492,200	-	-	-	-
00561005	Req-0157 Quantum Fire Engine - Pierce	-	507,000	-	-	-
00561006	Req-0083 Rescue Vehicle - Station # 19	-	278,720	-	-	-
00561007	Req-0084 Transport Capable Rescue Vehicle - Station # 29	-	278,720	-	-	-
	Totals	13,069,627	4,401,340	2,350,000	4,050,000	2,650,000

**ENTIRE PAGE TO BE CONSIDERED UNDERLINED**





# Vision 2020 Comprehensive Plan Seminole County, Florida

## Facility Program – Recreation and Open Space

### Summary of Policies, Programs and Capital Improvements with Cost Impacts Recreation and Open Space

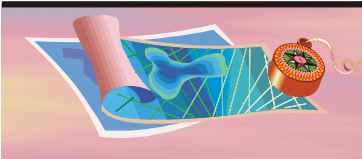
Scheduled Program and Cost Impacts for Fiscal Years 10/1/2007 - 9/30/2012	
Costs cover additional lands acquired under the Natural Lands program and initial activities to open properties to the public as well as park and trail development.	
<b>Total 5 Year Cost</b>	<b>\$ 22,264,845</b>

Potential Additional Cost Impacts During/Beyond Five Year Planning Period
<p><b>Natural Lands</b> - Costs cover additional lands acquired under the Natural Lands program and initial activities to open properties to the public as well as park and trail development.</p> <p><b>Trails</b> - The existing 27 miles of paved and open trail will be expanded to 40.4 miles of Showcase Trails and 18.8 miles of Neighborhood/City Trails from 2006 - 2010. The trail system is not counted towards park acreage.</p>

Available Funding Options - Natural Lands/Parks/Trails
<p>Major revenue sources available to the Board of County Commissioners (either existing or available without voter approval) to fund all or portions of the Recreation and Open Space Capital Improvement Element Update are: general revenues, impact fees, proceeds from bonds backed by general revenues, and various grants/contributions/donations. An initial endowment fund towards long-term Natural Lands management costs has also been established. As master plans for preservation and passive use of Natural Lands sites are developed over the coming years, these properties will begin to be counted towards meeting the County's park acreage level of service standards. Bond proceeds for trails will be leveraged with various grants, State/Federal reimbursements, and local operating budget activities to advance implementation of the full referendum-based program over the coming decade.</p>

**ENTIRE PAGE TO BE CONSIDERED UNDERLINED**





# Vision 2020 Comprehensive Plan Seminole County, Florida

## Capacity/Improvements Summary

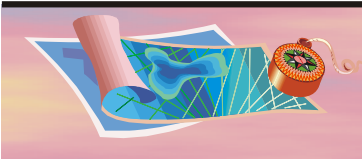
### Recreation and Open Space

Year	Total Park Acreage	Developed Park Acreage
<b><u>CURRENT</u></b>		
2006 Available	2,963	963
2006 Demand*	<u>1,550</u>	<u>775</u>
Surplus (Deficiency)	1,413	188
<b><u>SCHEDULED FIVE YEAR IMPROVEMENTS</u></b>		
Natural Lands and Parks	0	0
<b><u>FIFTH YEAR</u></b>		
2012 Available	2,963	963
2012 Demand*	<u>1,771</u>	<u>885</u>
Surplus (Deficiency)	1192	78
<b><u>FUTURE</u></b>		
2025 Needed*	1802	901
* Based on Adopted Standard of:	3.6 acres/1,000	1.8 acres/1,000

*Note: The trail system is not counted towards park acreage.*

**ENTIRE PAGE TO BE CONSIDERED UNDERLINED**





# Vision 2020 Comprehensive Plan Seminole County, Florida

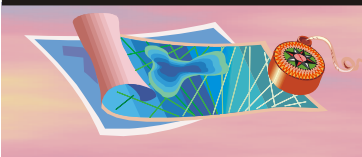
## Five Year Capital Schedule of Improvements

Project #	Project Title	FY 2008	FY 2009	FY 2010	FY 2011	FY 2012
00118305	Natural Lands	2,163,646	-	-	-	-
00187702	Cross Seminole Trail - Gardena to Layer	352,732	-	-	-	-
00187704	Seminole Wekiva Trail at SR 434 - Pedestrian Underpass	5,341,117	-	-	-	-
00187711	Winter Miles Trailhead at Shane Kelly Park	335,000	-	-	-	-
00187713	Cross Seminole Trail - Milker to Red Bug Lake	1,154,000	-	-	-	-
00187714	Cross Seminole Trail - Red Bug Lake to Franklin	1,314,511	-	-	-	-
00187753	Cross Seminole Trail - Greenway to Layer - Inner	4,567,045	-	-	-	-
00187757	Big Tree Park Trailhead	118,204	-	-	-	-
00207301	Fallen Officer Memorial	300,000	-	-	-	-
00229201	I-4 Pedestrian Bridge - Lighting	230,936	-	-	-	-
00229202	US 17-92 at General Hutchison Pkwy - Pedestrian Overpas	629,454	-	-	-	-
00229203	Cross Seminole Trail - Osprey Trail Railroad Crossing	6,621	-	-	-	-
00231601	Soldiers Creek Baseball Improvements	56,903	-	-	-	-
00234601	Jetta Point Park	9,780,330	-	-	-	-
80000008	Jetta Point Park Grant	200,000	-	-	-	-
81056415	Roseland Park Playground	49,698	-	-	-	-
	Totals	26,600,197	-	-	-	-

**ENTIRE PAGE TO BE CONSIDERED UNDERLINED**







# Vision 2020 Comprehensive Plan Seminole County, Florida

## Facility Program - Solid Waste

### Summary of Policies, Programs and Capital Improvements with Cost Impacts Solid Waste

#### Scheduled Program and Cost Impacts for Fiscal Years 10/1/2007 - 9/30/2012

The Solid Waste Management Division's planned capital improvement costs are related to work intended to maintain the solid waste management system and delivery of the level of service adopted in the Comprehensive Plan. Planned expenditures include replacement and upgrades of existing systems (e.g., pumping systems, tipping floor surfaces, etc.) and renewal of operating permits (including the Central Transfer Station's FDEP operating permit). No major expansions of the solid waste management system are planned.

NOTE: The level of service (LOS) for solid waste was changed to a per capita per day rate in place of the former per capita and employee breakdown. Sufficient capacity is available that the more detail calculation is not necessary to assure continued capacity to meet demand.

**Total 5 Year Cost** \$ **9,029,416**

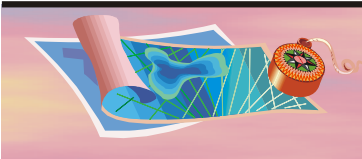
#### Potential Additional Cost Impacts During/Beyond the Five Year Planning Period

Potential changes in grants legislation and EPA/FDEP regulatory requirements may alter future implementation and cost of various solid waste programs. Changes in FDEP rules and regulations concerning the operation of slurry-walled landfills could require the need for future landfill construction. No changes in these regulations are anticipated at this time.

**Available Funding Options** - Major revenue sources available to the Board of County Commissioners (either existing or available without voter approval) to fund all or portions of the Solid Waste Capital Improvement Element Update are: rates and charges collected from Solid Waste system customers, proceeds from bond issues backed by revenues of the system and various grant opportunities. The revenue capacities associated with each of the above major revenues provide sufficient funding to enable full implementation of the five year schedule of improvements identified as part of the CIE Update.

**ENTIRE PAGE TO BE CONSIDERED UNDERLINED**





# Vision 2020 Comprehensive Plan Seminole County, Florida

## Capacity/Improvements Summary

### Solid Waste

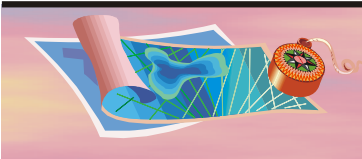
Year	Osceola Rd Landfill	Central Transfer Station
	(tons)	(avg daily tons)
<b><u>CURRENT</u></b>		
2006 Available	23,900,000	1,900
2006 Demand (Class 1 Disposal)*	320,000	900
Capacity Remaining (Deficient)	23,580,000	1,000
<b><u>SCHEDULED FIVE YEAR IMPROVEMENTS</u></b>		
Proposed new capacity	0	0
<b><u>FIFTH YEAR OF CIE</u></b>		
2012 Available	21,867,418	1,900
2012 Demand *	374,205	1,052
Capacity Remaining (Deficient)	21,493,213	848
<b><u>FUTURE</u></b>		
2025 Capacity Remaining (Deficient)	16,577,841	519

Solid Waste Facilities Levels of Service (Landfill disposal rate; does not include recycled tonnage)	Osceola Rd Landfill	Central Transfer Station
Measure	per Capita (lbs/day)	per Capita (lbs/day)
Adopted LOS for 2006 - 2012	4.2	4.3

\* Projection of demand based on current Level of Services. LOS to be reviewed/revised at next EAR.  
(facility program - solid waste.xls)

**ENTIRE PAGE TO BE CONSIDERED UNDERLINED**





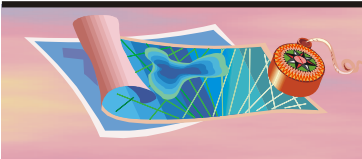
# Vision 2020 Comprehensive Plan Seminole County, Florida

## Five Year Capital Schedule of Improvements

<b>Proj #</b>	<b>Project Title</b>	<b>FY 2008</b>	<b>FY 2009</b>	<b>FY 2010</b>	<b>FY 2011</b>	<b>FY 2012</b>
00137801	Citizens' Service Area at Central Transfer Station	2,619,541	-	-	-	-
00160801	Landfill Roadways Repairs	235,990	676,000	-	-	-
00201901	Tipping Floor Resurfacing	350,000	350,000	-	1,084,000	-
00244501	Landfill Scalehouse	774,649	-	-	-	-
00244601	Landfill Gas System Expansion	551,384	-	250,000	250,000	250,000
00244801	Landfill Title Five Air Permit Renewal	20,600	-	-	-	-
00244901	Landfill Household Hazardous Waste Pole-Barn	153,134	-	-	-	-
00245101	Landfill Solid Waste Operating Permit - Renewal	37,118	100,000	-	-	-
00281201	Landfill Yard Waste Area Rehabilitation	-	627,000	-	-	-
00281301	Landfill Scrap Metal Area- Storage Pad Addition	350,000	-	-	-	-
00281401	Central Transfer Station-Hoppers Rehabilitation	350,000	-	-	-	-
<b>Totals</b>		<b>5,442,416</b>	<b>1,753,000</b>	<b>250,000</b>	<b>1,334,000</b>	<b>250,000</b>

***ENTIRE PAGE TO BE CONSIDERED UNDERLINED***





# Vision 2020 Comprehensive Plan Seminole County, Florida

## Facility Program - Transportation: Mass Transit

### Summary of Policies, Programs and Capital Improvements with Cost Impacts Transportation - Mass Transit

#### Scheduled Program and Cost Impacts for Fiscal Years 10/1/2007 - 9/30/2012

Funding for LYNX bus route service, Regional Transportation Agency membership and the Americans with Disabilities Act paratransit service. The bus routes are #1, #23, #34, #39, #41, #45, #46 and #47. Additional monies are shown funding of the commuter rail and bus shelter construction.

**Total 5 Year Cost** \$ 71,222,080

#### Potential Additional Cost Impacts During/Beyond The Five Year Planning Period

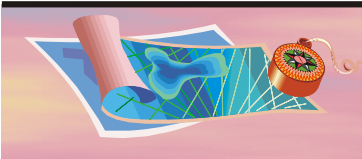
The County applied for and has been awarded a matching FDOT Service Development Grant to start a new SR 434 route. A decision as to the County's ability to fund this opportunity will be made in 2008.

**Available Funding Options** – Major revenue sources available to the Board of County Commissioners (either existing or available without voter approval) to fund all or portions of the Mass Transit Capital Improvement Element Update are: general revenues, locally levied infrastructure sales tax, gas taxes, proceeds from bond issues backed by general revenues or specified revenues, contributions from local benefiting agencies and various grant opportunities. The City of Oviedo has continued to provide funds relative to service received in its area.

*(Facility program-Transp Mass Transit.xls)*

**ENTIRE PAGE TO BE CONSIDERED UNDERLINED**





# Vision 2020 Comprehensive Plan Seminole County, Florida

## Capacity/Improvements Summary

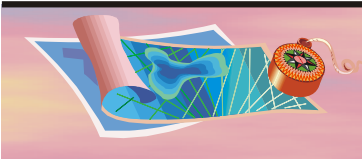
### Transit

Year	Revenue Miles/Capita Transit Service Area
<b><u>CURRENT</u></b>	
2005 Available	868,787
2006 Demand*	<u>413,347</u>
Surplus (Deficiency)	455,440
<b><u>SCHEDULED FIVE YEAR IMPROVEMENTS</u></b>	
None at this time	0
<b><u>FIFTH YEAR</u></b>	
2012 Available	868,787
Demand*	<u>466,444</u>
Surplus (Deficiency)	402,343
<b><u>FUTURE</u></b>	
2025 Needed*	472,163

\* Based on Standard of : 1.03 Revenue Miles/Capita.

***ENTIRE PAGE TO BE CONSIDERED UNDERLINED***





# Vision 2020 Comprehensive Plan Seminole County, Florida

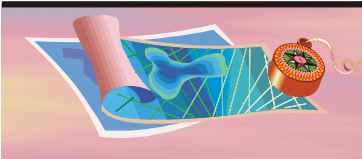
## Five Year Capital Schedule of Improvements

<u>Project #</u>	<u>Project Title</u>	<u>FY 2008</u>	<u>FY 2009</u>	<u>FY 2010</u>	<u>FY 2011</u>	<u>FY 2012</u>
00015301	LYNX Bus and Paratransit Service	\$ 4,389,805	\$ 4,521,499	\$ 4,657,144	\$ 4,796,858	\$ 4,940,764
00110203	Developers Commitment Bus Shelters	\$ 169,009	-	-	-	-
00251401	Rail Related Transit	\$47,747,000	-	-	-	-
	Totals	\$52,305,814	\$ 4,521,499	\$ 4,657,144	\$ 4,796,858	\$ 4,940,764

(Facility Program - Transp Mass Transit.xls)

***ENTIRE PAGE TO BE CONSIDERED UNDERLINED***





# Vision 2020 Comprehensive Plan Seminole County, Florida

## Facility Program - Transportation: Roads

### Summary of Policies, Programs and Capital Improvements with Cost Impacts Transportation - Roads

#### Scheduled Program and Cost Impacts for Fiscal Years 10/1/2007 - 9/30/2012

Costs include funding for:

- State Road Network Improvements
- County Road Network Improvements and joint projects with the Cities
- Traffic Management Improvements
- Sidewalk Programs
- Pedestrian Overpasses

**Note:** The following projects, contained in the list of CIE projects for Transportation, are proposed to utilize Transportation Regional Incentive Program (TRIP) funding:

- 00205202 SR 426 / CR 419 Oviedo Cost Shared (TRIPS)
- 00205302 SR 434 - Montgomery Rd to I-4 (TRIPS)
- 00205303 SR 434 - I-4 to Rangeline Rd (TRIPS)
- 00205304 SR 434 - Rangeline Rd to CR 427 (TRIPS)

**Total 5 Year Cost** | **\$402,392,094**

#### Potential Additional Cost Impacts During/Beyond Five Year Planning Period

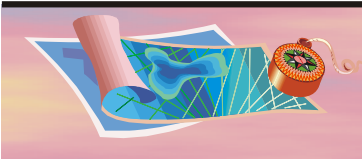
The September, 2001 referendum renewal of the local option sales tax has enabled programming of specific projects to provide a wide variety of transportation improvements, including previously identified needs on the State Road system. Evolving needs still not fully addressed, however, include major road network improvements in the vicinity of key economic drivers in Seminole County. An example of such a need relating to the Orlando-Sanford Airport is the widening of SR 46 from Sanford Avenue west to SR 415, and the widening of SR 415 which are not fully funded through construction.

**Available Funding Options** - Major revenue sources available to the Board of County Commissioners (either existing or available without voter approval) to fund all or portions of the Road Capital Improvement Element Update are: general revenues, special district ad valorem assessments, locally levied infrastructure sales tax, gas taxes, impact fees, proceeds from bond issues backed by general revenues or specified revenues, contributions from local benefiting agencies and various grant opportunities. The revenue capacities associated with each of the above major revenues provide sufficient funding to enable full implementation of the five year schedule of improvements identified as part of the CIE Update.

**TRIPS Projects** - The projects are adopted into the CIE to ensure consistency between the County's Comprehensive Plan and the plans of FDOT.

**ENTIRE PAGE TO BE CONSIDERED UNDERLINED**





# Vision 2020 Comprehensive Plan Seminole County, Florida

## Capacity Evaluation Summary: County Roads

County Roads	From-To	Note	Adopted LOS Standard	2006 Existing Deficiency	Projected Deficiency if no Improve-ment	Projected Deficiency with Improve-ment
Airport Boulevard	SR 46 to Mc Cracken Road	1	E			
Airport Boulevard	Mc Cracken Road to CR 46A	1	E			
Airport Boulevard	CR 46A to Old Lake Mary Road	1	E		Yes	
Airport Boulevard	Old Lake Mary Road to US 17-92	1	E		Yes	
Bunnell Road	Eden Park Road to West Town Parkway	1	E			
Chapman Road	SR 426 to Oak Circle	1	E		Yes	
Chapman Road	Oak Circle to SR 434	1	E		Yes	
CR 15 (Monroe Rd)	SR 46 to US 17-92	1	E			
CR 431 (Orange Blvd.)	CR46A to SR 46	1	E			
CR 419	SR 434 to Lockwood Boulevard	1	E		Yes	
CR 419	Lockwood Boulevard to 2nd Street	4	D		Yes	
CR 419	Orange County Line to Chuluota Bypass	1	D			
CR 46A	Country Club Road to Airport Boulevard	1	E	Yes	Yes	
CR 46A	Airport Boulevard to Old Lake Mary Road	1	E		Yes	
Dean Road	SR 426 to County Line	1	E			
Douglas Avenue	Citrus Street to SR 436	4	E		Yes	Yes
Eden Park Road	Bunnell Road to Orange County Line	1	E			
Lake Drive	Seminola Boulevard to Tuskawilla Road	1	E		Yes	
Lake Emma Road	Sand Pond Road to Greenway Boulevard	1	E		Yes	
Lake Emma Road	Greenway Boulevard to Longwood Hills Road	1	E		Yes	
Lake Mary Boulevard	Rinehart Road to Country Club Road	4, 5	E	Yes	Yes	
E. Lake Mary Blvd	Ohio Ave. to SR 415	3	E			
Markham Woods Rd.	EE Williamson Road to Lake Mary Blvd.	1	E+20%			
Palm Springs Rd.	North St. to Central Parkway	2	E+20%	Yes	Yes	Yes
Sand Lake Road	SR 434 to W. Lake Brantley Road (E)	1	E			
Sand Lake Road	W. Lake Brantley (E) to Hunt Club Boulevard	1	E			
Wekiva Springs	Fox Valley Road to Hunt Club Boulevard	4	D	Yes	Yes	
Wymore Road	SR 436 to Westmonte Drive	1	E			
Wymore Road	Westmonte Drive to Spring Lake Hills Drive	1	E		Yes	Yes
Wymore Road	Spring Lake Hills Drive to Lake Destiny Road	1	E			
Wymore Road	Lake Destiny Road to Orange County Line	1	E			

- (1) Additional lanes or other improvements programmed in 2007 CIE.  
 (2) Policy Constrained  
 (3) New Roadway Construction.  
 (4) Monitor Traffic Conditions.  
 (5) There is a feasibility study to look at the possibility of widening to 6 lanes included in the CIE.

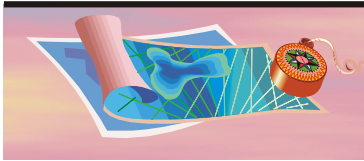
Note: This summary presents only those existing, classified County roadways that have:

- 1) a current deficiency, 2) a five-year deficiency, or 3) improvement activity in the CIE.

**ENTIRE PAGE TO BE CONSIDERED UNDERLINED**







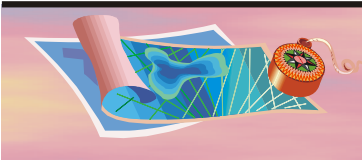
# Vision 2020 Comprehensive Plan Seminole County, Florida

## Capacity Evaluation Summary: State Roads

State Roads	From-to	Note	Adopted LOS Standard	2006 Existing Deficiency	Projected Deficiency if no Improvement	Projected Deficiency with Improvement
Interstate 4	Orange County Line to SR 436	3	D	Yes	Yes	Yes
Interstate 4	SR 436 to SR 434	3	D	Yes	Yes	
Interstate 4	SR 434 to Lake Mary Boulevard	3	D	Yes	Yes	
Interstate 4	Lake Mary Boulevard to SR 46	3	D	Yes	Yes	
Interstate 4	SR 46 to Volusia County Line	3	D	Yes	Yes	
SR 417	Orange County Line to Aloma Avenue	3	D			
SR 417	Aloma Avenue to Red Bug Lake Road	3	D			
SR 417	Red Bug Lake Road to SR 434	3	D		Yes	
SR 415	SR 46 to Volusia County Line	1	E		Yes	
SR 419	SR 434 to US 17-92	3	E	Yes	Yes	
SR 426	Mitchell Hammock Road to Winter Springs Blvd.	1	E	Yes	Yes	
SR 426	Winter Springs Boulevard to Pine Avenue	1	E	Yes	Yes	
SR 426	Pine Avenue to SR 434	1	E	Yes	Yes	
SR 434	Mitchell Hammock Road to SR 426-CR 419	3	D	Yes	Yes	
SR 434	SR 426-CR419 to DeLeon Street	3	D	Yes	Yes	
SR 434	DeLeon Street to SR 417	3	D	Yes	Yes	
SR 434	CR 427 to Rangeline Road	1	D	Yes	Yes	
SR 434	Rangeline Road to Palm Springs Drive	1&4	D	Yes	Yes	
SR 434	Palm Springs Drive to Raymond Avenue	1&4	D	Yes	Yes	
SR 434	Raymond Avenue to I-4	1&4	D	Yes	Yes	Yes
SR 434	I-4 to Douglas Avenue	1&4	D	Yes	Yes	Yes
SR 434	Douglas Avenue to Wekiva Springs Road	1&4	D	Yes	Yes	
SR 434	Wekiva Springs Road to Sand Lake Road	3	D	Yes	Yes	
SR 434	Sand Lake Road to SR 436	3	D	Yes	Yes	
SR 434	SR 436 to County Line	1	D	Yes	Yes	
SR 436	Orange County Line to Howell Branch Road	3	D	Yes	Yes	
SR 436	Howell Branch Road to Red Bug Lake Road	3	D	Yes	Yes	
SR 436	Red Bug Lake Road to US 17-92	3	D	Yes	Yes	
SR 436	US 17-92 to CR 427 (Longwood Avenue)	3	D	Yes	Yes	
SR 436	CR 427 (Longwood) to CR 427 (Maitland)	3	D	Yes	Yes	
SR 436	CR 427 (Maitland) to Palm Springs Drive	3	E		Yes	
SR 436	Palm Springs Drive to Northlake Boulevard	3	E		Yes	
SR 436	Northlake Boulevard to I-4 East Ramp	3	E		Yes	
SR 436	I-4 East Ramp to Wymore-Douglas	3	E		Yes	
SR 436	Wymore-Douglas to Lynchfield Avenue	3	E	Yes	Yes	
SR 436	Lynchfield Avenue to SR 434	3	D	Yes	Yes	
SR 436	SR 434 to Bear Lake Road	3	D	Yes	Yes	

**ENTIRE PAGE TO BE CONSIDERED UNDERLINED**





# Vision 2020 Comprehensive Plan Seminole County, Florida

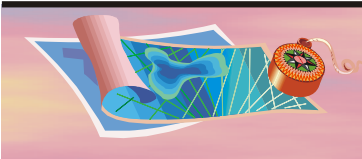
State Roads	From-to	Note	Adopted LOS Standard	2006 Existing Deficiency	Projected Deficiency if no Improvement	Projected Deficiency with Improvement
SR 436	Bear Lake Road to Hunt Club Boulevard	3	D	Yes	Yes	
SR 436	Hunt Club Boulevard to Orange County Line	3	D	Yes	Yes	
SR 46	Mellonville Avenue to Beardall Avenue	1	E	Yes	Yes	
SR 46	Beardall Avenue to SR 415	1	D		Yes	
SR 46	SR 415 to Osceola Rd.	3	C		Yes	
SR 46	Lake County to CR 431	3	D	Yes	Yes	
US 17-92	Orange County Line to Lake of the Woods	1	D	Yes	Yes	Yes
US 17-92	Lake of the Wood to SR 436	3	D	Yes	Yes	
US 17-92	SR 436 to Triplet Lake Drive	3	D	Yes	Yes	
US 17-92	Triplet Lake Drive to Seminola-Dogtrack	3	D		Yes	
US 17-92	Seminola-Dogtrack to SR 434	3	D		Yes	
US 17-92	SR 434 to CR 427-SR 419	1	D	Yes	Yes	
US 17-92	CR 427-SR 419 to CR 427	1	D	Yes	Yes	Yes
US 17-92	CR 427 to County Home Road	1	D		Yes	
US 17-92	County Home Road to Lake Mary Boulevard	1	D		Yes	
US 17-92	Lake Mary Boulevard to Airport Boulevard	3	D			
US 17-92	CR 46A to SR 46	3	D		Yes	
US 17-92	Seminole Blvd. to Oak Drive	3	D	Yes	Yes	
US 17-92	Oak Drive to CR 15	3	D	Yes	Yes	
US 441/OBT	Orange County to Orange County	3	D			

- (1) Additional lanes or other improvements programmed as listed in the FDOT workprogram.
- (2) Policy Constrained/all or part in County's adopted Transportation Element.
- (3) Monitor traffic operating conditions.
- (4) Advance funded by Seminole County one cent sales tax monies. Construction funded in 2008/09 & 2009/10.

**Note:** This summary presents only those existing, classified roadways in the County which have: either a current or five-year deficiency; or improvement activity in the FDOT 5 Year Work program or the County's CIE. The evaluations of projected traffic operating conditions on State roads made for the 2000 Update have reinforced the need for continued monitoring and development of multimodal transportation strategies to address levels of service on State roads. The increasingly limited availability of capacity on State roads to accommodate new or expanded land development activities is threatening the County's ability to achieve important Federal, State and County goals, objectives and policies. Even with the use of travel time and delay studies, peak hour evaluations and other more rigorous techniques, available capacity is rapidly becoming depleted on significant portions of I-4, US 17-92, SR 434, and SR 436. Also, shorter segments of SR 46 and SR 426 are becoming capacity deficient. Many of these deficient State Roadway segments are policy constrained to 6 lanes in the County's comprehensive plan. For the remainder, the FDOT has not programmed construction of additional lanes in the first three years of the adopted 5-year Work Program. The lack of available capacity on State roads and the failure to program needed capacity improvements is creating a critical problem for the County. The extent of these projected roadway capacity deficiencies requires the County to begin specific development and implementation of the multimodal strategies first presented in the 1991 Comprehensive Plan. These strategies have been further refined in this update to the Comprehensive Plan and additional policies and implementing devices have been identified. In part, implementation of these strategies will be through a series of special areas studies and designation of special transportation areas as appropriate. In addition, the County has worked extensively with FDOT to advance fund projects through the County's second generation one cent sales tax. This has resulted in the County advance funding the six laning of SR 434 from Montgomery Rd./Wekiva Springs Rd to Rangeline Rd.

**ENTIRE PAGE TO BE CONSIDERED UNDERLINED**





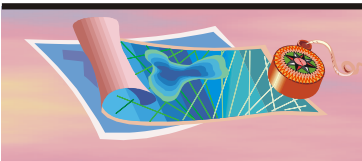
# Vision 2020 Comprehensive Plan Seminole County, Florida

## Five Year Capital Schedule of Improvements

Project #	Project Title	FY 2008	FY 2009	FY 2010	FY 2011	FY 2012
00005801	CR 15 (Monroe Rd) - SR 46 to US 17-92	14,862,953	-	-	-	-
00006102	Airport Blvd II & III - US 17-92 to SR 46 (Construction)	633,227	-	-	-	-
00006202	Bunnell Rd/Eden Park Ave (Construction)	17,132,000	-	-	-	-
00006301	Chapman Rd - SR 426 to SR 434	6,165,560	-	-	16,000,000	-
00010701	E Lake Mary Blvd IIB - Ohio Ave to SR 415	2,013,227	-	-	-	-
00011401	CR 46A III - CR 15 to Old Lake Mary Rd	613,873	-	-	-	-
00012401	Lake Dr - Seminola Blvd to Tuskawilla Rd	497,673	-	-	-	-
00012403	Lake Dr - Seminola Blvd to Tuskawilla Rd (SNOCWTR)	14,448	-	-	-	-
00013701	Sand Lake Rd - Hunt Club Blvd to SR 434	-	-	2,000,000	-	-
00014601	Wymore Rd - Orange County Line to SR 436	53,191	-	2,000,000	-	-
00024202	Howell Branch Rd - Lake Howell Rd to SR 436 - Landscapi	200,000	-	-	-	-
00054101	Lake Emma Rd - Sand Pond Rd to Longwood Hills Rd	3,775,327	12,565,494	-	-	-
00137101	Asphalt Surface Maintenance Program	4,050,000	4,300,000	5,051,520	5,301,570	5,801,508
00187718	Riverwalk Trail - County Road 15 to French Avenue	2,000,000	-	-	-	-
00191617	Minor Roads Program - Future Years	-	-	2,500,000	2,500,000	2,500,000
00191620	Minor Road Program - GECs	220,000	220,000	250,000	250,000	250,000
00191622	Beardall Ave	501,610	-	-	-	-
00191636	CR 431 (Orange Blvd) - CR 46A to SR 46	4,877,423	-	-	-	-
00191640	Country Club Rd - Rantoul Ln to CR 46A	1,702,270	-	-	-	-
00191642	SR 436 at Maitland Ave - Intersection Improvement	591,992	-	-	-	-
00191646	SR 426 - Tuskawilla Rd to SR 417	2,316,226	-	-	-	-
00191648	SR 436 at Howell Branch Rd - Intersection Improvement	133,710	-	-	-	-
00191649	SR 436 at Hunt Club Blvd - Intersection Improvement	583,637	-	-	-	-
00191650	CR 46A and US 17-92 - Intersection Improvement	580,113	-	-	-	-
00191651	Upsala Road - 90 Degree Curve	605,637	-	-	-	-
00191652	CR 426 Safety Improvements	1,700,000	-	-	6,000,000	-
00191654	Jacobs Trail	400,000	-	-	-	-
00191655	Howell Creek Dam at Lake Howell Road	-	350,000	-	700,000	-
00191656	Longwood - Lake Mary Road	125,000	175,000	750,000	-	-
00191657	Snowhill Road Drainage Improvement	-	175,000	150,000	1,500,000	-
00191658	CR-15/Upsala Road Drainage Improvements	-	300,000	-	2,000,000	-
00191659	County Road 46A at Colonial Parkway Intersection Improv	75,000	550,000	-	-	-
00191660	CR 46A at International Parkway Intersection Improvement	75,000	800,000	-	-	-
00191661	CR 46A & I-4 Eastbound Ramp Intersection Improvement	75,000	550,000	-	-	-
00191662	County Road 427 at State Road 436 Intersection Improver	-	75,000	550,000	-	-
00191663	Future Projects Preliminary Engineering Evaluations	-	75,000	-	100,000	-
00191664	Howell Branch Road and SR 426 Intersection Improvemen	-	75,000	550,000	-	-
00191665	Lake Mary Blvd at College Drive Intersection Improvement	-	75,000	550,000	-	-
00191666	Lake Mary Boulevard at US 17-92 Intersection Improvemei	75,000	550,000	-	-	-
00191667	Lake Mary Boulevard Feasibility Study	100,000	-	-	-	-
00191668	McCulloch Road	-	100,000	-	-	-

**ENTIRE PAGE TO BE CONSIDERED UNDERLINED**



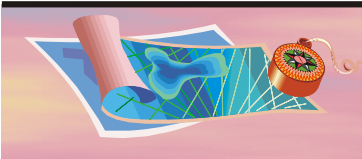


# Vision 2020 Comprehensive Plan Seminole County, Florida

Project #	Project Title	FY 2008	FY 2009	FY 2010	FY 2011	FY 2012
00192001	Markham Woods Road	104,750	-	-	-	-
00192006	Collector Roads Program - GECs	220,000	220,000	250,000	250,000	250,000
00192007	Wekiva Springs Rd Intersection Improvements	684,355	-	-	-	-
00192008	Wekiva Springs Road - Fox Valley Drive to County Line	2,183,439	-	-	-	-
00192014	Bear Lake Rd - Orange County Line to SR 436	2,328,654	-	-	-	-
00192015	Markham Woods Rd (E Williamson to Lake Mary)	135,336	3,150,000	-	-	-
00192401	Lake Mary Elementary School Pedestrian Overpass	100,000	-	-	-	-
00192509	Dike Road (Sidewalk)	184,981	850,000	-	-	-
00192514	County Sidewalk Program - Future Years	-	-	2,500,000	2,500,000	2,500,000
00192531	Greenway Blvd (Sidewalk)	350,000	-	-	-	-
00192549	Pearl Lake Causeway (Sidewalk)	13,727	-	-	-	-
00192550	County Road 419 Sidewalk	250,000	-	-	-	-
00192552	CR 415 (Sidewalk)	378,000	-	-	-	-
00192554	Longwood Hills (Sidewalk)	315,000	-	-	-	-
00192556	Raymond Ave (Sidewalk)	149,000	-	-	-	-
00192557	Gabriella Lane (Sidewalk)	50,000	-	-	-	-
00192558	Eastbrook Blvd (Sidewalk)	25,000	-	-	-	-
00192560	Greenwood (Sidewalk)	411,047	-	-	-	-
00192564	North Line Dr Sidewalk	400,000	-	-	-	-
00192572	Park Drive Sidewalk	100,000	-	-	-	-
00192573	CR 427 Sidewalk (Longwood Lake Mary Rd to Church St.)	630,000	-	-	-	-
00192574	Summerline Avenue Sidewalk	364,145	-	-	-	-
00192581	CR 419 @ Econlockhatchee Bridge Pedestrian Safety	43,092	-	-	-	-
00192582	West 27th Street Sidewalk	425,000	-	-	-	-
00192583	Airport Boulevard Sidewalk	195,000	600,000	-	-	-
00192584	County Road 46A Sidewalk	375,000	-	-	-	-
00192585	County Road 419 Sidewalk	50,000	-	-	-	-
00192586	Eagle Circle Missing Gaps Sidewalk	95,000	850,000	-	-	-
00192588	Geneva Area Sidewalk	145,000	700,000	-	-	-
00192590	Jackson Street Sidewalk	235,000	-	-	-	-
00192591	Markham Road Sidewalk	150,000	-	-	-	-
00192592	Midway Elementary School Area Sidewalk	95,000	500,000	-	-	-
00192593	Ronald Reagan Boulevard (CR 427) Sidewalk	550,000	-	-	-	-
00192594	Snow Hill Road Sidewalk	174,186	-	-	-	-
00192595	Stefanik Road and Moyeses Road Sidewalk	275,000	-	-	-	-
00192596	Upsala Road Sidewalk	125,000	600,000	-	-	-
00192597	Sidewalk Truncated Domes Retrofit	217,000	-	-	-	-
00192598	Oviedo - CR 419 at Reed Ave - Sidewalk	93,990	-	-	-	-
00192599	East Hillcrest Street / Alpine Street Sidewalk	50,000	-	437,262	-	-
00196901	Red Bug Pedestrian Overpass at Elementary School	3,966,117	-	-	-	-
00197001	US 17-92 Sanford Lakefront Project	2,900,000	-	-	-	-
00198101	Dean Road - SR 426 to Orange County Line	-	980,000	-	4,000,000	7,500,000

**ENTIRE PAGE TO BE CONSIDERED UNDERLINED**



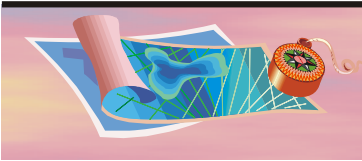


# Vision 2020 Comprehensive Plan Seminole County, Florida

Project #	Project Title	FY 2008	FY 2009	FY 2010	FY 2011	FY 2012
00198102	CR 419 Widening Lanes	1,400,000	-	5,000,000	15,000,000	-
00202317	Plumosa Avenue Rail Road Crossing	155,082	-	-	-	-
00202318	Future Safety 2001 Sales Tax Projects	-	-	400,000	400,000	400,000
00202340	Howell Branch Road Detectable Warnings	-	44,000	-	-	-
00202342	Lake Mary Blvd Railroad Crossing Construction	-	230,000	-	-	-
00202343	Lake Mary Boulevard Rail Road Crossing Design (Dist 4)	40,000	-	-	-	-
00202344	Lockwood Boulevard Detectable Warnings	-	53,000	-	-	-
00202345	Maitland Avenue Detectable Warnings	-	35,000	-	-	-
00202346	McCulloch Road Detectable Warnings	-	23,000	-	-	-
00202347	Merritt Street Rail Road Crossing Design	-	20,000	-	-	-
00202348	Red Bug Lake Road Detectable Warnings	-	190,000	-	-	-
00202349	Southwest Road Railroad Crossing Design and Constructior	150,000	-	-	-	-
00202350	Sunland Subdivision Rehabilitation Program	-	50,000	-	-	-
00202351	Tuskawilla Road Detectable Warnings	40,000	-	-	-	-
00202352	Dodd Road Detectable Warnings	-	41,000	-	-	-
00205202	<b>SR 426 / CR 419 Oviedo Cost Shared (TRIPS)</b>	5,811,518	-	-	-	-
00205204	Altamonte Pedestrian Overpass (County / City Shared Cost)	2,000,000	-	-	-	-
00205301	Future Years State Road System	220,000	220,000	250,000	250,000	250,000
00205302	<b>SR 434 - Montgomery Rd to I-4 (TRIPS)</b>	140,854	11,620,000	-	-	-
00205303	<b>SR 434 - I-4 to Range Line Rd (TRIPS)</b>	8,679,354	17,000,000	15,000,000	-	-
00205304	<b>SR 434 - Rangeline Rd to CR 427 (TRIPS)</b>	600,000	1,400,000	-	13,000,000	-
00205401	Lake Mary Pedestrian Overpass at Rhinehart Road	113,037	-	-	-	-
00205501	Future Traffic Signals and Signal Systems	-	-	720,000	800,000	800,000
00205526	Bear Lake at Bunnell Mast Arms	-	180,000	-	-	-
00205527	County Road 46A at Ridgewood Mast Arms	180,000	-	-	-	-
00205528	Hunt Club at East Wekiva Trail Mast Arms	-	160,000	-	-	-
00205530	Palm Springs at North Mast Arms	-	180,000	-	-	-
00205531	Seminola at Button Mast Arms	-	80,000	-	-	-
00205532	Seminola at Winterpark Mast Arms	-	-	80,000	-	-
00205533	US 17/92 at Seminola / Dog Track Mast Arms	210,000	-	-	-	-
00205534	US 17/92 at Button Mast Arms	190,000	-	-	-	-
00205535	Oxford at Lake of the Woods Mast Arms	-	180,000	-	-	-
00205536	Wymore Road and Oranole Mast Arm	110,000	-	-	-	-
00205537	S Sanford Ave at Lake Mary Blvd Mast Arms	340,000	-	-	-	-
00205538	US 17-92 at Laura Street - Mast Arm	80,000	-	-	-	-
00205601	Communication Network Future Projects	-	-	240,000	240,000	240,000
00205614	CR 427 Fiber Optic Construction	-	90,000	-	-	-
00205617	SR 46 New Fiber Optic Construction	-	50,000	-	-	-
00205618	State Road 434 at Manor Fiber Optic Upgrade	70,000	-	-	-	-
00205619	State Road 434 Fiber Optic Upgrade	70,000	-	-	-	-
00205701	Future ATM Projects	-	-	600,000	600,000	600,000
00205727	Ethernet Controller Conversion	150,000	-	-	-	-

**ENTIRE PAGE TO BE CONSIDERED UNDERLINED**



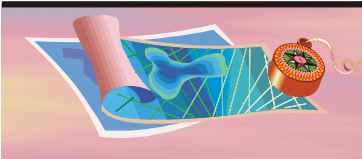


# Vision 2020 Comprehensive Plan Seminole County, Florida

Project #	Project Title	FY 2008	FY 2009	FY 2010	FY 2011	FY 2012
00205728	Ethernet Controller Conversion	-	100,000	-	-	-
00205731	Isolated Intersection Communications	150,000	-	-	-	-
00205732	Video Wall Controller Upgrade	150,000	-	-	-	-
00205733	Transponder Reader Stations	-	150,000	-	-	-
00205734	Video Wall Display Upgrade	-	200,000	-	-	-
00206201	Dyson Drive School Safety Sidewalk	385,001	-	-	-	-
00206204	Safety / Sidewalk Program	220,000	220,000	250,000	250,000	250,000
00226301	SR 436 at Red Bug Lake Rd Interchange	14,089,502	16,300,000	30,000,000	8,000,000	-
00226501	US 17-92 - Orange County Line to Lake of the Woods Blvc	1,038,481	-	-	-	-
00227012	Arterial / Collector Roads Pavement Rehabilitation	-	1,715,000	2,100,000	2,250,000	2,400,000
00227017	South West Road - Country Club to Roosevelt	95,700	-	-	-	-
00227024	Snow Hill Road - 2640 Ft from Ave H to pavement change	148,616	-	-	-	-
00227026	Beardall Ave from SR 46 to Marquette Ave	214,200	-	-	-	-
00227032	County Road 15 (Country Club Road) Pavement Rehabilita	850,000	-	-	-	-
00227036	Orange Boulevard (SR 46 to Oregon St) Pavement Rehab	650,000	-	-	-	-
00227037	Lake Howell Lane to SR 436 Pavement Rehab	410,000	-	-	-	-
00227038	Wekiva Springs Rd (County Line to Hunt Club) Pavement F	410,000	-	-	-	-
00227039	Old Lake Mary Rd (Palmetto to Airport Blvd) Pavement Rel	-	335,000	-	-	-
00229204	Aloma Ave at Red Bug Lake Rd - Pedestrian Overpass	4,074,709	-	-	-	-
00229205	Lake Mary Blvd at International Pkwy - Pedestrian Crossing	5,162,500	-	-	-	-
00247601	Supplimental Roads - Group I	198,310	-	-	-	-
00247602	Supplimental Roads - Group II	300,000	500,000	2,100,000	-	-
00247703	28th St From Park Ave To Oak Ave	37,000	-	-	-	-
00247705	Orange St - Howard Ave to House 2290	56,000	-	-	-	-
00247706	Magnolia Ave - 27th St to South To - Pavement	129,900	-	-	-	-
00255801	SR 46 Gateway Sidewalk - Hickman Dr to Airport Blvd / JPI	400,000	3,128,000	-	-	-
00261501	Red Bug Lake Road Median Refurbishment (East of Tuskaw	-	75,000	-	-	-
00261502	Tuskawilla Road Median Refurbishment (South of Red Bug	200,000	-	-	-	-
00261503	Howell Branch Road Median Refurbishment	300,000	-	-	-	-
00261504	County Road 427 Median Refurbishment (South of US 17-	200,000	-	-	-	-
00275601	Fernwood Blvd. Pedestrian Crossing	210,060	-	-	-	-
80000005	State Road 426 / County Road 419 (Oviedo LAP)	1,410,000	-	-	-	-
	Totals	138,525,740	83,954,494	74,278,782	81,891,570	23,741,508

**ENTIRE PAGE TO BE CONSIDERED UNDERLINED**





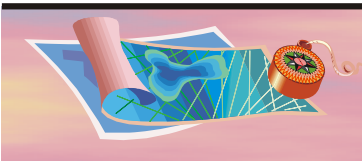
# Vision 2020 Comprehensive Plan Seminole County, Florida

## METROPLAN ORLANDO/FDOT FIVE YEAR TRANSPORTATION IMPROVEMENT PLAN Federal and State Funded Highway Projects - Seminole County Five Year Transportation Improvement Program - FY 2007/2008 - 2011/2012

Project Description					Project Status and Cost (\$000's)									
Project - FDOT FMN	From	To	Length (Miles)	Work Description	2007/08	2008/09	2009/10	2010/11	2011/12	Funds	Phases			
SR 46 - 2401631	Bridge over St. Johns River		1.68	Replace Low Level Bridge	139					BNBR	PE			
					150					BRP	PE			
					10					DIH	PE			
					792					BNBR	ROW			
					7					DIH	ROW			
					273					BRAC	DSB			
					5,266					BRAC	DSB			
					41,460					BRP	DSB			
					8,842					EBBP	DSB			
SR 434 - 2401662	Tuskawilla Rd.	Tuscora Dr.	0.18	Drainage Improvements	22					DIH	CST			
SR 434/Alafaya Tr. - 2401671	McCulloch Rd.	W of Mitchell Hammock Rd.	3.22	Widen to 6 Lanes	1						DIH	ROW		
					219						DS	ROW		
					1,398						SA	ROW		
					1,198						LF	RRU		
					50						DS	CST		
					10						MG	CST		
SR 426/Aloma Ave. - 2401741	SR 417	Mitchell Hammock Rd.	3.30	Widen to 4 Lanes	6					DIH	ROW			
					1,060					DS	ROW			
SR 15/600/US 17/92 - 2401961	Shepard Rd.	Lake Mary Blvd.	3.70	Widen to 6 Lanes	10						DIH	PD&E		
					8						DIH	PE		
					20						SU	PE		
								350			XU	PE		
												1,738	XU	ROW
										2,048				DDR
SR 46 - 2402001	Lake/Seminole Co. Line	Orange Blvd.	4.94	Project Development and Environment Study	281					ACSA	PD&E			
					46					DIH	PD&E			
SR 46 - 2402161	SR 15/600/US 17/92	E of SR 415	3.80	Project Development and Environment Study	6					DIH	PD&E			
SR 46 - 2402162	Mellonville Ave.	SR 415	2.64	Widen to 4 Lanes	8					DIH	PE			
					325					DDR	ENV			

**ENTIRE PAGE TO BE CONSIDERED UNDERLINED**





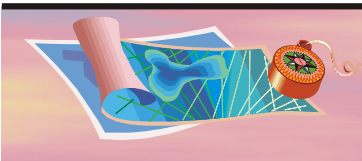
# Vision 2020 Comprehensive Plan Seminole County, Florida

Project Description					Project Status and Cost (\$000's)						
Project - FDOT FMN	From	To	Length (Miles)	Work Description	2007/08	2008/09	2009/10	2010/11	2011/12	Funds	Phases
SR 434 - 2402312	SR 414/Maitland Blvd.	Calabria Rd.	1.73	Widen to 6 Lanes	1					DS	RRU
					125					LF	RRU
					85					DIH	CST
					600					DS	CST
					3					LF	CST
					600					DS	INC
SR 434 - 2402332	Montgomery/Wekiva Springs Rd.	I-4	0.89	Widen to 6 Lanes	15					DIH	PE
					115	119				DIH	ROW
					616					LF	ROW
					2,224	4,991				LFP	ROW
					3,840	1,428				TRIP	ROW
					8,250					LFP	CST
SR 434 - 2402333	I-4	Rangeline Rd.	1.79	Widen to 6 Lanes	8					DIH	PE
					119	352				DIH	ROW
					12,778	22,978				LFP	ROW
					8,528					TRIP	ROW
Congestion Mitigation - 2402691	Regionwide			Projects to be Identified by	1,243					DDR	PE
				Congestion Management System	47	1,686	2,000	2,000	2,000	XU	CST
I-4 - 2425831	Orange/Seminole Co. Line	SR 434	3.28	Resurfacing	266					IM	DSB
I-4 - 2425922	Orange/Seminole Co. Line	0.25 mi. N of Central Pkwy.	2.50	Add 2 Special Use Lanes/	276					NHAC	PE
				Rehabilitate Pavement	155					NHAC	ENV
I-4 - 2425923	0.25 mi. N of Central Pkwy.	1.0 mi. N of SR 434	2.00	Add 2 Special Use Lanes/ Rehabilitate Pavement	125					NHAC	PE
I-4 - 2427022	at SR 15/600/US 17/92		0.69	Reconstruct Eastbound Exit Ramp	4					NH	PE
					1,323					BNIR	ROW
					16					DIH	ROW
					10					NHAC	RRU
					561					NHAC	CST
					650					EBNH	INC
SR 15/600/US 17/92 - 4044181	at SR 436		0.50	Grade Separated Interchange	1					DIH	PE
					29					SA	PE
					5,125					ACSU	ROW
					98				33	DIH	ROW
					1,094					SU	ROW
					600				10,460	XU	ROW
					13			DDR	ENV		

**ENTIRE PAGE TO BE CONSIDERED UNDERLINED**



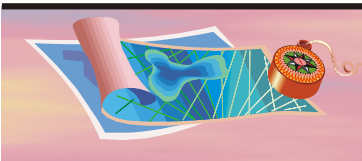




# Vision 2020 Comprehensive Plan Seminole County, Florida

Project Description					Project Status and Cost (\$000's)						
Project - FDOT FMN	From	To	Length (Miles)	Work Description	2007/08	2008/09	2009/10	2010/11	2011/12	Funds	Phases
SR 426 - 4045251	Mitchell Hammock Rd.	Pine Ave.	1.06	Widen to 4 Lanes	22					DIH	PE
					500					BNDS	ROW
					44					DIH	ROW
					123					DS	ROW
					151					DDR	RRU
					2,275					LF	RRU
					345					SU	RRU
					2,353					DDR	CST
					49					LF	CST
					253					SU	CST
						47			XU	CST	
					550					DDR	INC
SR 415 - 4073551	SR 46	Seminole/Volusia Co. Line	0.90	Widen to 4 Lanes	1					DIH	PE
					39	40	56			DIH	ROW
					1,170	3,250	4,165			DS	ROW
I-4 - 4075731	at SR 46		0.40	Minor Interchange Improvements	7					DIH	PE
					28				44	DIH	ROW
					15,585				19,618	DIS	ROW
I-4 Master Plan - 4084171	Seminole Co.		14.14	Advance Right-of-Way Acquisition	18					DIH	PE
					201					BNIR	ROW
					170			100		DIH	ROW
							12,564	9,888		DS	ROW
								32,548		GMR	ROW
			46,859					NHAC	ROW		
SR 15/600/US 17/92 - 4117421	Airport Blvd.	Seminole Blvd.	3.13	Resurfacing		140				DS	RRU
						5,216				DDR	CST
						32				DIH	CST
Seminole Co. Traffic - 4130197				Traffic Signals	232	240	247	254		DDR	OPS
Engineering - Cross Seminole Trail - 4137471	Red Bug Lake Rd.	Franklin St.		Construct Shared Use Path	2,000					ACSE	CST
Cross Seminole Trail - 4137481	Gardenia Ave.	Wade St.		Construct Shared Use Path	345					SE	Payback
SR 15/600/US 17/92 - 4147791	Orange/Seminole Co. Line	Lake-of-the-Woods Blvd.	1.04	Reconstruct from Rural to Urban	14					DIH	PE
					3,000					LFR	CST
					1,200	8,000	3,000			DDR	Payback
SR 426/CR 419 - 4150301	Pine Ave.	Lockwood Blvd.	3.00	Widen to 4 Lanes	1,422					HPP	PE

**ENTIRE PAGE TO BE CONSIDERED UNDERLINED**

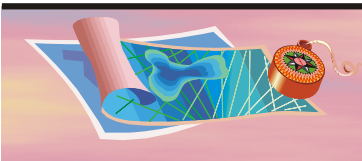


# Vision 2020 Comprehensive Plan Seminole County, Florida

Project Description					Project Status and Cost (\$000's)						
Project - FDOT FMN	From	To	Length (Miles)	Work Description	2007/08	2008/09	2009/10	2010/11	2011/12	Funds	Phases
SR 434 - 4150302	S of Smith St.	N of Oviedo Shopping Center	0.15	Preliminary Engineering		200				DIH	ROW
						7,094				LFP	ROW
						6,500				TRIP	ROW
								2,316		LFP	CST
SR 419 - 4154701	SR 434	SR 15/600/US 17/92	2.54	Skid Hazard Overlay	67					HSP	CST
SR 434 - 4155141	SR 436	W of Markham Woods Rd.	2.79	Resurfacing	13					DIH	CST
SR 46 - 4155201	W of Center Rd.	W of Mills Creek Rd.	5.15	Resurfacing	16					DIH	CST
SR 15/600/US 17/92 - 4155271	N of Lake Mary Blvd.	N of Airport Blvd.	1.07	Resurfacing	225					DIH	CST
SR 417 Extension - 4155871	I-4	International Pkwy.	0.10	New 4-Lane Expressway					170	DIH	CST
									20,508	DS	CST
SR 46 - 4159781	at River Oaks Cir. & Woodbridge Dr./Ave. C		0.32	Add Turn Lane(s)	5					DIH	CST
Cross Seminole Trail - 4166211	Mikler Rd.	Red Bug Lake Rd.		Construct Shared Use Path	138					DDRF	CST
					138					LFF	CST
					825					XU	CST
SR 46 - 4171781	E of SR 415	Seminole/Vol usia Co. Line	12.24	Resurfacing		57				DIH	CST
						6,162				DS	CST
Kewannee Trail - 4174611	Wilshire Blvd.	Brittany Ct.		Construct Shared Use Path		250				SE	PE
								1,000		SE	CST
SR 46 Gateway - 4174841	Rinehart Rd.	Airport Blvd.	2.20	Construct Sidewalk		1,750				XU	CST
Seminole Co. Traffic - 4176891				Traffic Control Devices			700	465	465	XU	CST
Signal System -											
SR 434 - 4190661	Rangeline Rd.	Grant Ave.	1.41	Safety Project	843					HSP	CST
SR 436 - 4192321	Orange/Seminol e Co. Line	Pearl Lake Rd.	2.29	Lighting	250					HSP	CST

**ENTIRE PAGE TO BE CONSIDERED UNDERLINED**



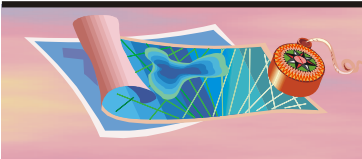


# Vision 2020 Comprehensive Plan Seminole County, Florida

Project Description					Project Status and Cost (\$000's)						
Project - FDOT FMN	From	To	Length (Miles)	Work Description	2007/08	2008/09	2009/10	2010/11	2011/12	Funds	Phases
I-4 Eastbound Off-Ramp - 4193671	at Lake Mary Blvd.		0.01	Add Right Turn Lane(s)	604					HSP	CST
SR 436 - 4193691	Willshire Blvd.	Lake Howell Rd.	0.98	Major Intersection Improvements	14					DIH	PE
					7,000	16,435				LFP	ROW
CR 15 - 4196641	SR 46	Orange Blvd.	1.13	Widen to 4 Lanes	1,000					CIGP	CST
					1,000					LFP	CST
CR 426 - 4196791	Division St.	SR 46		Pave Shoulders	100					HRRR	PE
								1,640		HRRR	CST
								2,474		HSP	CST
Fernwood Blvd. - 4196901			0.19	Safety Project		120				HSP	CST
Lake Mary Downtown - 4197641				Environmental/ Demographics	3					HPP	PD&E
Bypass Roadway - SR				Statistics Study							
15/600/US 17/92 - 4197651	at French Ave.			Intersection Roundabout	3					HPP	PD&E
Access Rd. - 4197731	Orlando Sanford			Streetscaping	10					HPP	CST
	International Airport										
Advanced ROW - 4207521	Countywide			Right-of-Way Acquisition	199					DDR	ROW
Acquisition -					5					DIH	ROW
					2,438					DIRS	ROW
SR 434 - 4218551	SR 419	Seminole Co. Trail Bridge	2.34	Landscaping	142					DS	CST
SR 15/600/US 17/92 - 4220131	Seminole Blvd.	I-4	3.33	Resurfacing	5					DIH	PE
					200					DS	PE
						22				DS	CST
						3,432				XA	CST
East Hillcrest St. - 4225721	at Alpine St.			Sidewalk	50					SR2S	PE
							437			SR2S	CST
Seminole Co. - 4226311	Countywide			Coordinate Traffic Signals	96	145				TRIP	PE
					96	145				XU	PE
I-4 - 4226321	Westbound Rest Area	Lake Mary Blvd.	4.60	Landscaping		61				DIH	CST
						462				DS	CST

**ENTIRE PAGE TO BE CONSIDERED UNDERLINED**





# Vision 2020 Comprehensive Plan Seminole County, Florida

Project Description					Project Status and Cost (\$000's)						
Project - FDOT FMN	From	To	Length (Miles)	Work Description	2007/08	2008/09	2009/10	2010/11	2011/12	Funds	Phases
SR 436 - 4227071	Oxford Rd.	Cassel Creek Rd.	1.57	Resurfacing			3,987			DDR	CST
							411			DIH	CST
SR 46 - 4227081	W of Mills Creek Bridge	SR 15/600/US 17/92	0.48	Resurfacing			1,016			DDR	CST
							145			DIH	CST
SR 436 - 4231201				Developer Proportionate Share		325				LFP	CST
				Reserve Funding Action							
SR 426 - 4233111	W of Tuskawilla Rd.	SR 417 Ramps	0.80	Widen to 4 Lanes	5					DIH	PE

(MPO FedState FDOT Hwy0812 Seminole.xls)

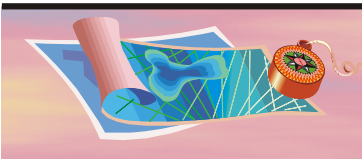
## PROJECT PHASES

CST - Construction phase  
 ENV - Environmental Work  
 INC - Construction Bonus Phase  
 LAR - Local Advance Reimbursement Funding  
 PDE - Project Development & Environmental Study  
 PE - Preliminary Engineering phase

ROW - Right of Way phase  
 RRU - Railroad or Utilities Work  
 CI - Contract Incentives  
 CS - Construction Support  
 DB - Design Build  
 AD - Administration

**ENTIRE PAGE TO BE CONSIDERED UNDERLINED**





# Vision 2020 Comprehensive Plan Seminole County, Florida

## METROPLAN ORLANDO TRANSPORTATION IMPROVEMENT PROGRAM AVIATION PROJECT STATUS AND COST (\$000's)

### ORLANDO SANFORD INTERNATIONAL AIRPORT July 11, 2007

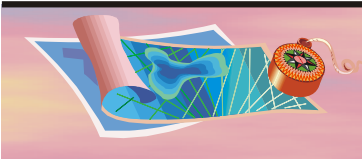
FM No.	Project Description *	2007/08	2008/09	2009/10	2010/11	2011/12	Fund
4051961	Construct Taxiway Tango					5,500	FAA
						305	DS
						305	LF
4076511	Overlay & Re-Mark Runway 9L/27R	4,000					FAA
		200					DS
		200					LF
4076521	Rehab West Ramp and Apron				4,500		FAA
					167		DS
					167		LF
4076671	Construct Parking Garage (Phase 2)		2,500	2,500			DS
			2,500	2,500			LF
4100951	Extend & Light Runway 9L-27R & Taxiway Bravo to 12,000'		5,400			36,922	FAA
						972	GMR
			300				DS
			300			972	LF
<i>The amounts shown are programmed by FDOT. The Sanford Airport Authority is requesting \$9,000,000 in FAA funds and \$450,000 each in DS and LF funds for this project in FY 2009/10</i>							
4184701	Acquire Land to Extend Runways 9L/27R to 11,000'	6,000					FAA
		150					DS
		150					LF
4208471	Construct Taxiway Alpha (Phase 3)				5,000	13,254	FAA
						349	GMR
					278		DS
					278	349	LF
<i>The Sanford Airport Authority is requesting that the funds programmed for project #4208471 in FY 2010/11 be advanced to FY 2009/10.</i>							
4208481	Construct Taxiway Fox				5,000		FAA
					278		DS
					278		LF
248125	Extend Runway 9R-27L & Taxiway Siera to 6,200' & Install ILS/MALSR	7,600					FAA
		200					DS
		200					LF
<i>FDOT programmed \$4,275,000 for project #2481251 in FY 2006/07. The Sanford Airport Authority is requesting that the \$8,000,000 shown be programmed in FY 2006/07 and 2007/08. (This project is not included in FDOT's FY 2007/08-2011/12 Five Year Work Program.)</i>							
New	Acquire Land for Noise Compatibility	4,866					FAA
		128					DS
		128					LF
New	In-Line Baggage Screening Conveyor System		6,983				FAA
			184				DS
			184				LF
New	Acquire Land for Noise Compatibility		5,918				FAA
			156				DS
			156				LF
New	Acquire Land for Noise Compatibility					5,838	FAA
						154	DS
						154	LF

(\* Only projects totaling over \$4M have been shown.)

(Facility Program - Transp Roads.xls/OSIA)

**ENTIRE PAGE TO BE CONSIDERED UNDERLINED**





# Vision 2020 Comprehensive Plan Seminole County, Florida

METROPLAN ORLANDO/FDOT FIVE YEAR TRANSPORTATION IMPROVEMENT PLAN  
Florida's Turnpike Enterprise Projects - Seminole County  
Five Year Transportation Improvement Program - FY 2007/2008 - 2011/2012

Project Description					Project Status and Cost (\$000's)						
Project - FDOT FMN	From	To	Length (Miles)	Work Description	2007/08	2008/09	2009/10	2010/11	2011/12	Funds	Phases
SR 417 - 2402592	E of Old Lake Mary Rd.	2,157' E of Rinehart Rd.	2.66	New 4-Lane Expressway	2,482	2,482	2,482	2,482	2,482	PKYI	Payback
SR 417 - 4136691	Milepost 0.0	Milepost 6.9	6.90	Resurfacing	7					PKYI	CST
					13					PKYR	CST
SR 417 - 4136692	Milepost 0.0	Milepost 6.9	6.90	Signing/Paveme nt Markings	32					PKYR	CST
SR 417 - 4136693	Milepost 0.0	Milepost 6.9	6.90	Guardrail Improvements	26					PKYI	CST
					6					PKYR	CST
SR 417 - 4150221			0.24	Bridge Painting	35					PKYR	CST
SR 417 - 4175451	Orange/Semin ole Co. Line	SR 434	6.40	Widen to 6 Lanes	1					PKYI	ROW
									1,000	PKBD	RRU
									137,119	PKBD	DSB
									295	PKYI	DSB
SR 417 - 4175452	at Lake Jesup Toll Plaza		0.05	Modify to 4 Express Lanes	192					PKYI	PE
					100					PKBD	RRU
					48,896					PKBD	CST
					5					PKYI	CST
					100					PKYI	ENV
						2,300				PKBD	INC
SR 417 - 4175453	University Blvd.	SR 434	6.40	Landscaping					3,329	PKBD	DSB
									30	PKYI	DSB
SR 417 - 4175455	at Lake Jesup Toll Plaza		0.05	Landscaping	923					PKBD	CST
SR 417 - 4175456	at Lake Jesup Toll Plaza		0.05	Replace Thermoplastic/ Signing/Paveme nt Markings			44			PKYI	CST
SR 417 - 4195671	Milepost 46.1	Milepost 49.9	3.80	Resurfacing	491					PKYI	PE
					643					PKYI	CST
					5,352					PKYR	CST
SR 417 - 4195672	Countywide			Replace Thermoplastic/ Signing/Paveme nt Markings	1					PKYI	PE
							194			PKYI	CST
SR 417 - 4195673	Countywide		17.45	Guardrail Improvements	247					PKYI	CST

(MPO FedState FDOT Hwy0812 Seminole.xls)

**ENTIRE PAGE TO BE CONSIDERED UNDERLINED**

