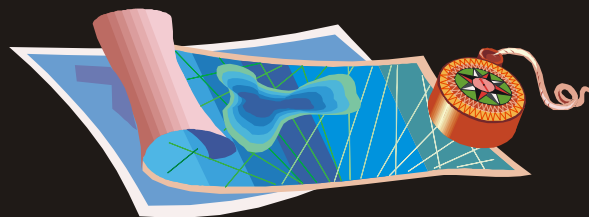


SOLID WASTE ELEMENT

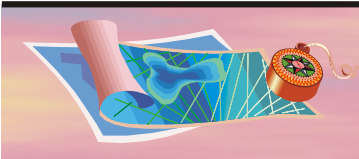
- Introduction
- Issues and Concerns
- Goals, Objectives and Policies



VISION 2020



SOLID WASTE



Vision 2020 Comprehensive Plan Seminole County, Florida

SOLID WASTE ELEMENT INTRODUCTION

Seminole County currently operates two solid waste facilities: The Osceola Road Landfill and the Central Transfer Station (CTS). The landfill is located in the northeastern corner of the county and provides disposal and recycling facilities serving the entire county, both unincorporated and municipal. The transfer station, located at the center of the county's urban area, provides a point from which to move the majority of the county's waste to the landfill. As of 2000, and under current regulations, disposal techniques and operational policies, both the landfill and the transfer station are projected to meet the County's needs beyond the 2020 planning horizon. See *Exhibit SOL: Solid Waste Service Area/Facility Locations* map in the exhibits section at the rear of this element.

The Solid Waste Division of the County's Environmental Services Department focuses on three main program areas:

Waste Reduction and Recycling

Over the past ten years, the County has developed and instituted a Countywide recycling program which includes the seven municipalities. The County has entered into an agreement with Waste Management (WM) to accept and process county recyclable materials (at their Orange County or Tampa Materials Recycling Facility). This contract expands the material being collected curbside to include magazines (in addition to newspaper) and plastics 3-7 (including plastics 1 and 2). The contract was executed in October. The contract term is to December 31, 2004, with one five-year renewal. The ongoing recycling program has successfully reduced the solid waste stream being landfilled by up to 30% as mandated by the Florida Solid Waste Management Act. Additionally, the Solid Waste Management Act bans specified materials from a Class I landfill, including tires, white goods, lead acid batteries and yard waste. The County contracts with a private vendor to take tires off site for use as boiler fuel. All other materials are stored until they can be disposed of or recycled consistent with State law.

Additionally, the County also operates a Household Hazardous Waste Collection Program. The program provides citizens a place to dispose of their chemicals, pesticides, paints, batteries, used oil and other potentially hazardous materials. The County has installed two hazardous waste storage buildings, one at the CTS and one at the landfill. The County contracts with a hazardous waste handling company to collect and properly dispose of the materials quarterly.

Operations and Maintenance

Solid waste disposal is an intense capital equipment activity requiring the operation and maintenance of numerous pieces of large equipment as well as maintenance of the landfill and CTS physical facilities.

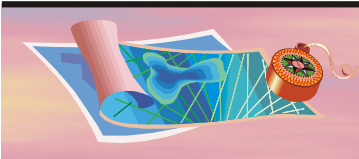
Permitting and Regulation

To continue to operate a Class 1 landfill, a significant amount of effort and dollars are spent yearly on compliance with strict federal and state regulations. These regulations deal not only with the way the landfill is constructed, but also the installation and daily monitoring of various environmental protection devices. Additionally, the landfill is constantly funding and implementing an ongoing closure program which will ensure that the area is environmentally safe in the future.



Vision 2020 Comprehensive Plan Seminole County, Florida





Vision 2020 Comprehensive Plan Seminole County, Florida

SOLID WASTE ELEMENT ISSUES AND CONCERNS

WASTE RECYCLING AND REDUCTION ISSUES

Issue SOL 1

Solid Waste Management Act – Waste Reduction

The Solid Waste Management Act required that landfilling of municipal solid waste be reduced by 30% by December 31, 1994. In 1994, the County attained the mandated goal of a 30% reduction in waste disposed in the landfill area through various programs of recycling waste materials. The Osceola Road Landfill is a Class 1 landfill and can be considered one of the County's most valuable assets due both to its rural location and the monetary investment made by the County to meet the State's strict rules for construction, maintenance, operation and closure. Because such landfills are difficult to site and expensive to construct, it is to the County's advantage to limit disposal to waste which cannot either be recycled or disposed of in any other way. In the future, the County will continue its present recycling and work efforts.

Issue SOL 2

Solid Waste Management Act – Prohibited Materials

The Solid Waste Management Act prohibits certain materials from being disposed of in Class I landfills. Five items have been specifically targeted to be excluded from permanent disposal at the landfill: yard waste, tires, white goods (major appliances), batteries, used oil and oil based paints. The County has developed programs to either process these materials on site (yard waste chipping and composting area) or contracted for disposal by approved private firms using State mandated handling and disposal techniques.

HEALTH AND SAFETY

Issue SOL 3

Household Hazardous Waste Disposal Program

The County currently operates a household hazardous waste disposal program which adequately meets the needs of Seminole County and is expanding the program as necessary to continue to meet those needs.

Issue SOL 4

Operation of Landfill and Collection System

The County operates a landfill and mandatory collection system for the benefit of County residents as one of the fundamental public health actions which a jurisdiction can provide. The continued operation of an efficient, effective and cost responsible solid waste program is of great value to the citizens and should be continued.



Vision 2020 Comprehensive Plan Seminole County, Florida



LEVEL OF SERVICE AND OPERATIONS ISSUES

Issue SOL 5

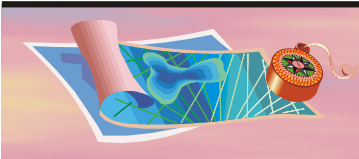
Adopted Levels Of Solid Waste

The State requires that local jurisdictions assure that adopted levels of solid waste service be maintained concurrent with the demand for those services. The goals, objectives and policies section establishes a level of service (LOS) to be maintained for each facility. Also required is the planning for new facility capacity once projected available capacity drops below a set number of years. Given the amount of facility capacity available and the historically steady and projectable growth in disposal demand that takes place, it is felt that a yearly recalculation and adoption of the most current disposal rates is overly conservative. To make this process more efficient, the Level of Service standards set forth here and in the 2001/02 Capital Improvements Element Update shall be in effect for the entire five year planning period through 2005/06.

As demonstrated in the support document to this element, the County currently has adequate facility capacity, existing and planned, to meet the service demands for both the current planning period through 2006 and for the future planning period through 2020.



SOL-4



Vision 2020 Comprehensive Plan Seminole County, Florida

SOLID WASTE ELEMENT GOALS, OBJECTIVES AND POLICIES

GOAL

The County shall provide solid waste services for existing and future development needs in a cost effective, socially acceptable and environmentally sound manner that will prevent the spread of disease and the creation of nuisances, and protect the public health, safety and welfare.

The county shall continue to recycle and reduce the amount of solid waste disposed of by landfilling.

OBJECTIVE SOL 1 WASTE RECYCLING AND REDUCTION

The County shall strive to divert a minimum of 30% of the County's solid waste stream from the Class I disposal area of the Osceola Road Landfill and meet solid waste recycling and separation goals as mandated by the Solid Waste Management Act. The Department of Environmental Regulation's formula for the measurement of the reduction of municipal solid waste shall be used.

Policy SOL 1.1 Recycling Program

The County shall strive to achieve a minimum 30% reduction in the amount of solid waste disposed of at the County's Class I landfill. Actions which shall be taken include, but are not limited to the following:

- A Continue to operate a Countywide recycling program.
- B Continue the Countywide residential recycling program and further develop such program through mechanisms such as implementation of materials recycling facilities or contracting for recycling processing. The program will at minimum continue to include newspaper, glass, aluminum, ferrous metals and plastic.
- C Periodically review relevant technologies for best management practices and assess the potential for use in the County's recycling program.

Policy SOL 1.2 Special Wastes

The County requires the separate collection and delivery for disposal or recycling of the following special wastes:

- A Yard waste - The County operates and maintains a yardwaste processing program at the Osceola Road Landfill, adjacent but separate from the permitted Class I disposal area.
- B White goods - The County shall continue to operate a temporary white goods storage area and dispose of white goods periodically by marketing them to a recycler.
- C Lead acid batteries - The County shall continue the existing program of drop-off sites at the transfer station and the Landfill. The County shall continue battery pickup by local recyclers.



Vision 2020 Comprehensive Plan

Seminole County, Florida



- D Household hazardous waste - The County shall continue the existing program of Transfer Station and Landfill drop-off sites. Waste is disposed of by a contract hazardous waste management firm.
- E Waste motor oil - The County shall continue the existing program of Transfer Station and Landfill drop-off sites and will maintain the network of dropoff sites (oil igloos) throughout the County.
- F Tires – The County shall continue the existing program of contracting for tire disposal through appropriate off-site processors.

Policy SOL 1.3

Construction and Demolition Debris

- A The County shall, in order to reduce the amount of construction and demolition debris disposed of at the Osceola Road Landfill, continue to:
 - 1 Operate a permitted construction and demolition recycling area outside of the Class I landfill area.
 - 2 Continue to recycle construction and demolition waste for use as landfill cover, road building material, etc.
- B The County shall continue to pursue the code enforcement process in order to deter the unlawful dumping of construction and demolition debris.

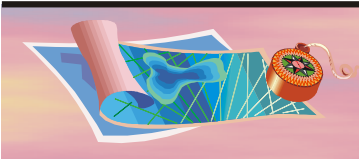
Policy SOL 1.4

Recyclable Materials Markets

The County shall support programs and activities which develop or expand recyclable material markets. Actions taken shall include, but are not limited to, the following:

- A The County shall use the Intergovernmental Recycling Committee to identify and pursue other recyclable commodities such as telephone books, Christmas trees, etc., and to promote additional recycling efforts by the business community to increase the amount of waste recycled.
- B The Department of Environmental Services shall continue to identify and contact recycling processors and investigate the possibility of locating recycling operations in Seminole County and the Central Florida area.





Vision 2020 Comprehensive Plan Seminole County, Florida

OBJECTIVE SOL 2 HEALTH AND SAFETY

The County shall endeavor to protect County residents from diseases associated with solid waste, from nuisances caused by the improper disposal of waste materials and from improper disposal of hazardous waste by implementing the following policies.

Policy SOL 2.1 Household Hazardous Waste Program

The County shall continue to sponsor the Household Hazardous Waste Program including the Amnesty Days program, operation of the existing Household Hazardous Waste Collection facilities at the Transfer Station and Landfill and the pickup and disposal of hazardous waste materials by hazardous waste management firms.

Policy SOL 2.2 Litter/Nuisance Control

The County shall continue to enforce the Seminole County nuisance provisions through its Code Enforcement Board and other available remedies and shall promote anti-litter practices through the existing adopt-a-road program. The County shall cooperate with other jurisdictions and agencies on the detection and correction of nuisances through a countywide litter committee comprised of Solid Waste, Potable Water, DOT, Library & Leisure Services and Administrative Services.



Vision 2020 Comprehensive Plan Seminole County, Florida



OBJECTIVE SOL 3 LEVEL OF SERVICE AND OPERATIONS

The County shall provide solid waste facilities with sufficient capacity to process and dispose of present and projected future volumes of solid waste by establishing and maintaining a set level of service for each County solid waste facility.

Policy SOL 3.1 Level of Service Standard

The County shall set and maintain adopted levels of service through the day-to-day activities of the Division of Solid Waste and the implementation of the Capital Improvements Element and the annual budget. County solid waste levels of service shall be as stated in *Exhibit SOL: Levels Of Service*. The levels of service shall be fully recalculated with each scheduled Comprehensive Plan Evaluation and Appraisal Report (EAR).

Policy SOL 3.2 Capacity Study Committee

The County shall ensure that available capacity is sufficient to maintain the adopted levels of service for solid waste. The County shall appoint a study committee to begin the process of adding additional landfill capacity once the projected capacity drops below 20 years and of adding additional transfer station capacity once the projected capacity drops below 15 years.

Policy SOL 3.3 Central Transfer Station

The County shall continue to operate and maintain a Central Transfer Station.

Policy SOL 3.4 Landfill Permit Requirements

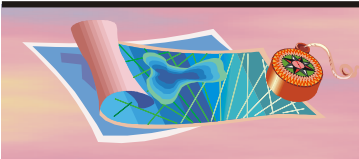
The County shall continue to comply with all Class I landfill permitting requirements including, but not limited to, the following:

- A The County shall continue to operate the water quality control system;
- B The County shall continue the evaluation of methane co-generation periodically.

Policy SOL 3.5 Enterprise Operation

The County shall continue to operate the Countywide solid waste program as an enterprise program by means of user fees, program oriented State funds, grants, etc., and not through the use of ad valorem taxes.





Vision 2020 Comprehensive Plan Seminole County, Florida

OBJECTIVE SOL 4 COORDINATION, MAXIMIZATION, AND DEFICIENCY CORRECTION

The County shall correct any future capacity deficiencies, coordinate capacity increases and maximize the use of existing facilities.

Policy SOL 4.1 Priority of Solid Waste Services

The County shall establish the priority of solid waste activities as follows in order of priority:

- A Operation and maintenance of all facilities in accordance with applicable regulations.
- B Provision of additional capacity to service new development.

Policy SOL 4.2 Intergovernmental Coordination

The County shall continue to support an intergovernmental approach to the problems and opportunities of waste management, both within and outside the County, through the monthly coordination meetings with the recycling coordinator and any future interlocal agreements.

Policy SOL 4.3 Annual CIE Update

The County shall annually update the Capital Improvements Element to adequately fund activities and programs enabling the correction of any deficiencies which might arise, the replacement of equipment, the maximizing of existing facilities and facility capacity increases needed to serve future needs.



Vision 2020 Comprehensive Plan Seminole County, Florida

