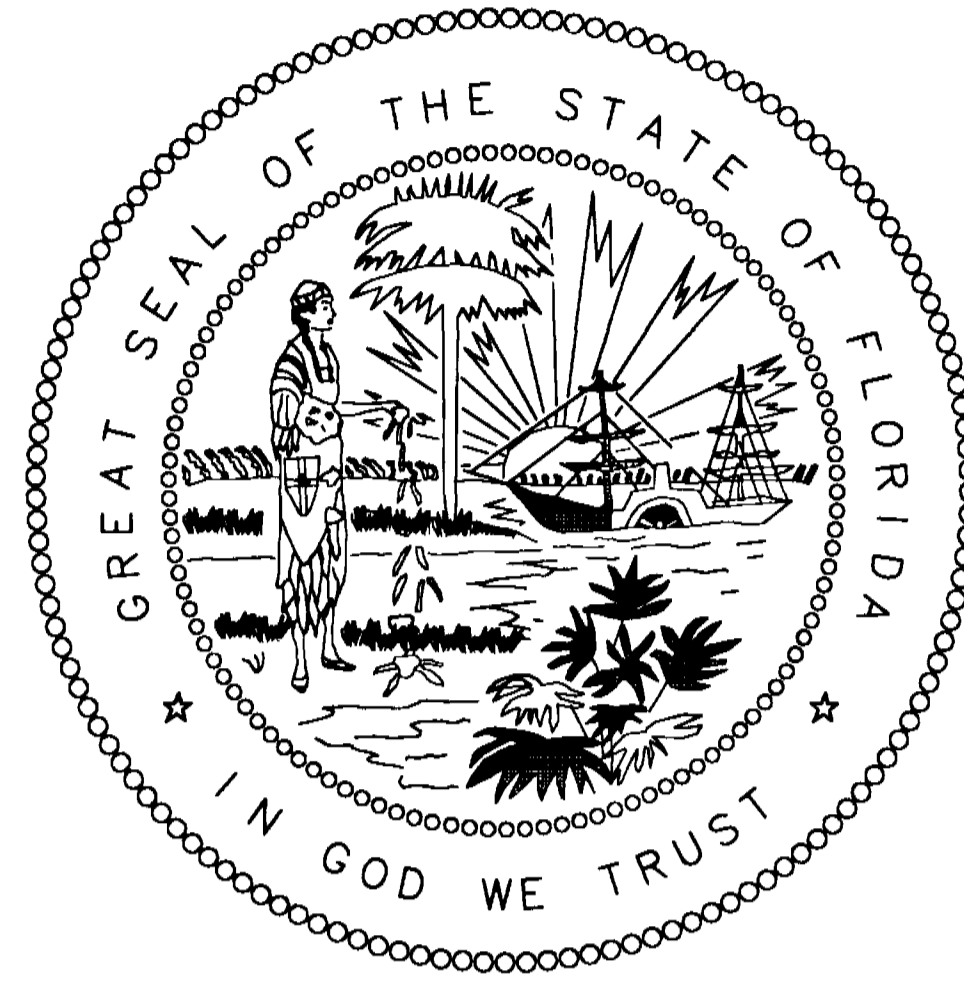


SEMINOLE COUNTY, FLORIDA

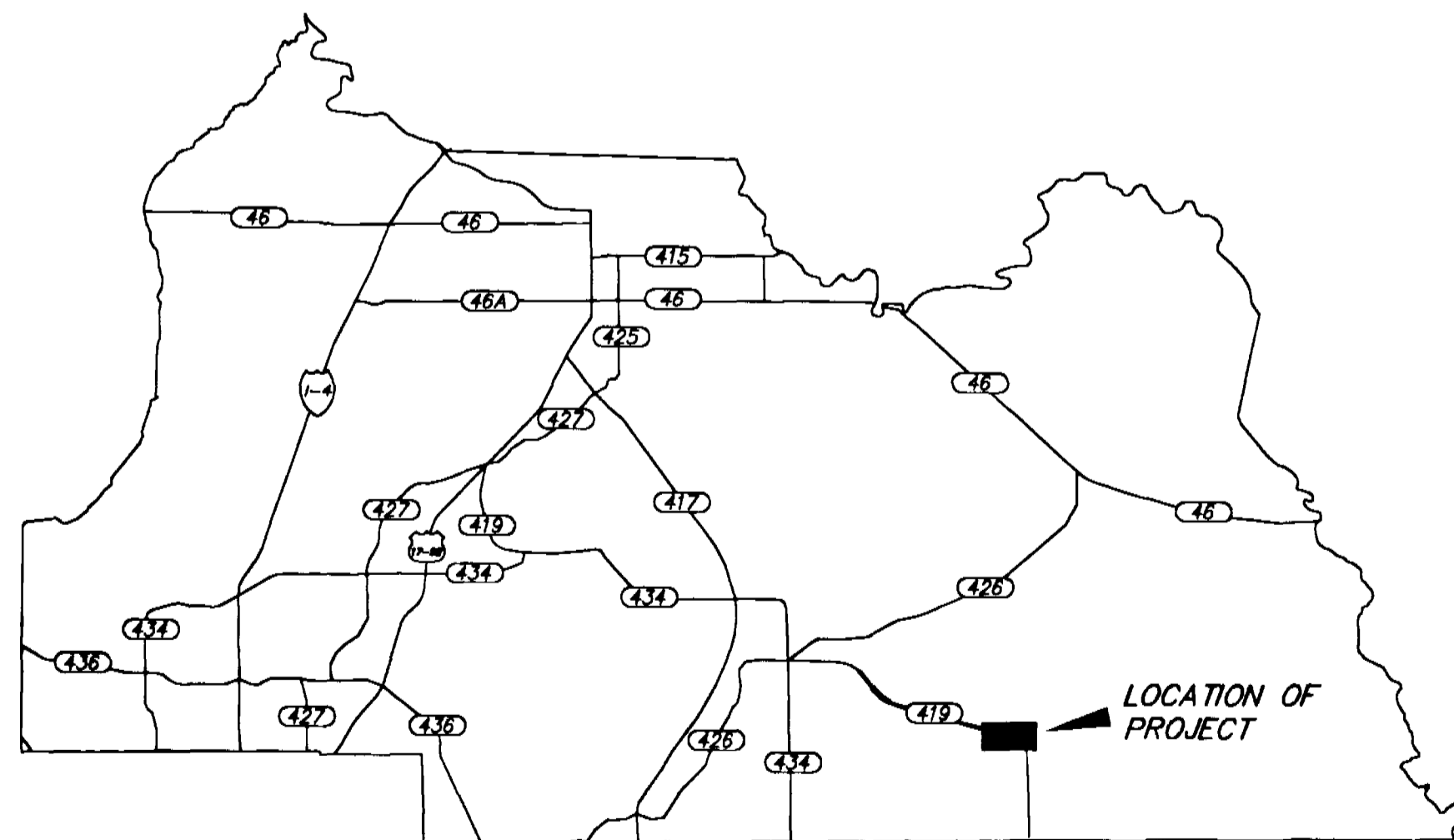


INDEX

| SHEET NO. | SHEET DESCRIPTION |
|-----------|--|
| 1 | COVER SHEET |
| 2 | CONTROL SURVEY |
| 3-5 | RIGHT-OF-WAY MAP |
| 6 | BASELINE OF SURVEY POINT REFERENCES & TABLE OF OWNERSHIP |

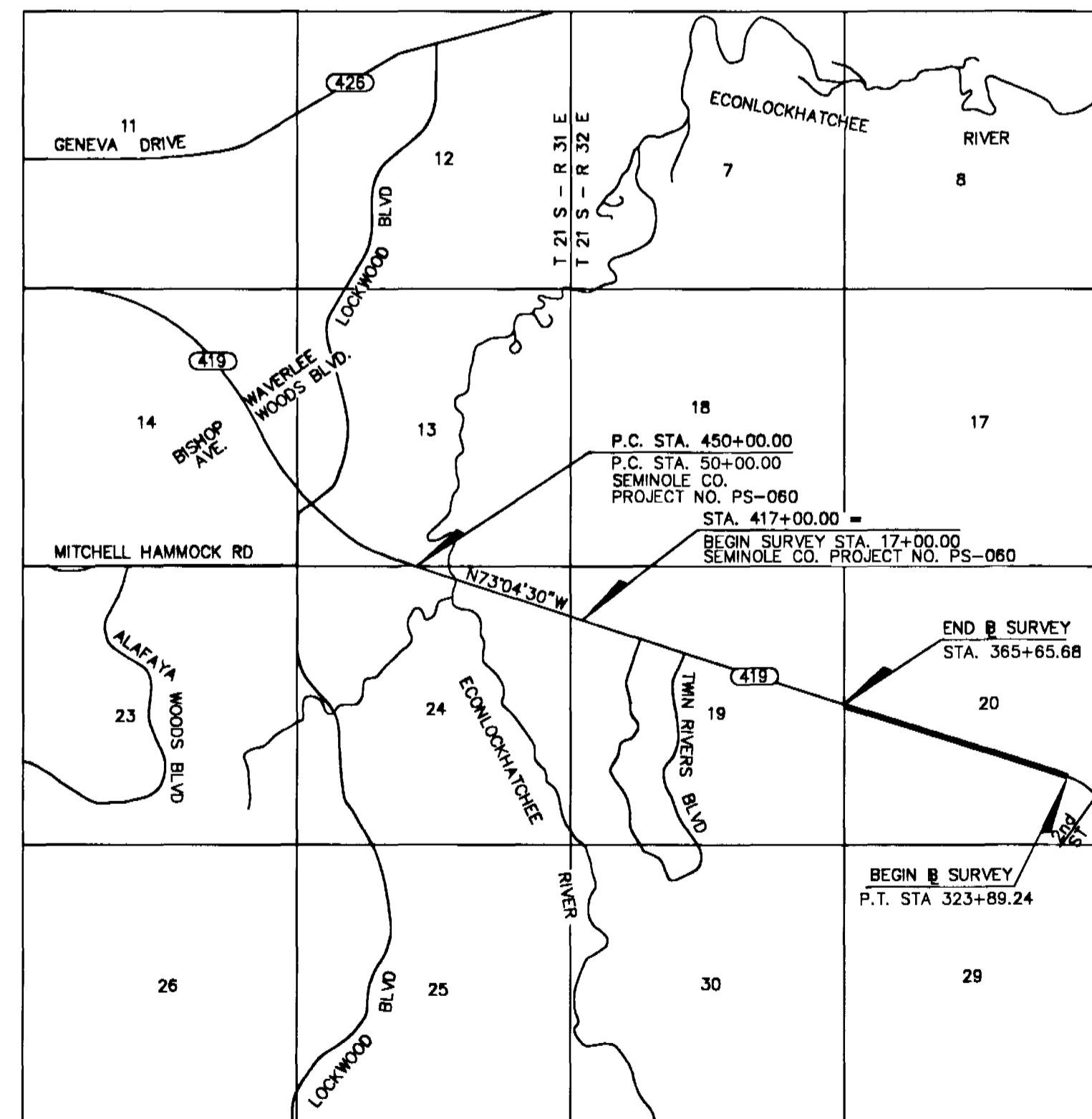
LEGEND:

- = FOUND IRON PIPE
- ⊙ = SET IRON BAR & CAP LB 3556
- ⊠ = FOUND CONCRETE MONUMENT
- DESC. = DESCRIPTION
- Δ = CENTRAL ANGLE
- R = RADIUS LENGTH
- L = ARC LENGTH
- C = CHORD LENGTH
- CB = CHORD BEARING
- AC = ARCS
- C.R. = COUNTY ROAD
- OHT = OVER HEAD TELEPHONE
- R/W = RIGHT-OF-WAY LINE
- FDOT = FLORIDA DEPARTMENT OF TRANSPORTATION
- SEC. = SECTION
- POB = POINT OF BEGINNING
- POC = POINT OF COMMENCEMENT
- PT = POINT OF TANGENCY
- O.R.B. = OFFICIAL RECORDS BOOK
- P.C. = PAGE
- DB = DEED BOOK
- FND = FOUND
- CM = CONCRETE MONUMENT
- IR&C = IRON ROD AND CAP
- IB = 5/8" X 18" IRON BAR
- P.L.S. = PROFESSIONAL LAND SURVEYOR
- (D) = DEED DATA
- (C) = CALCULATED DATA
- (F) = FIELD DATA
- (P) = PLAT DATA
- (S) = CERTIFIED CORNER RECORD
- BL = BASELINE
- CL = CENTERLINE
- TWP. = TOWNSHIP
- RNG. = RANGE
- M.B. = MAP BOOK
- P.C. = POINT OF CURVATURE
- P.O.T. = POINT ON A TANGENT
- P.O.C. = POINT ON A CURVE
- P. = PROPERTY LINE
- R.T. = RIGHT
- L.T. = LEFT
- S.F. = SQUARE FEET
- STA. = STATION
- P.I. = POINT OF INTERSECTION
- EXST. = EXISTING
- P.B. = PLAT BOOK
- = POWER POLE
- = FENCE
- = GUY WIRE
- P.B. = CONCRETE



COUNTY ROAD # 419 - PHASE II RIGHT-OF-WAY MAP & CONTROL SURVEY

FROM ± WEST LINE OF "TOWNSITE NORTH CHULUOTA" TO THE WEST LINE OF SECTION 20-21-32



LOCATION MAP

GENERAL NOTES:

- (1) PROJECT BEARINGS SHOWN HEREON ARE RELATIVE TO AN ASSUMED DATUM BASED ON THE CENTERLINE OF COUNTY ROAD NO. 419 (BETWEEN STA. 17+00 AND STA. 50+00), AS PER SEMINOLE COUNTY RIGHT-OF-WAY MAP COUNTY, PROJECT NO. PS-060, BEING NORTH 73°04'30" WEST.
- (2) PROPERTY BOUNDARIES WERE DETERMINED FROM FIELD SURVEY, PLATS OF RECORD AND RECORD TITLE.
- (3) THE EXISTING RIGHT-OF-WAY LINES OF C.R. 419 DEPICTED HEREON ARE BASED ON THAT CERTAIN R/W MAP OF S.R. 419 (ROAD NO. 203) - PROJECT NO. 8436, PREPARED BY THE STATE OF FLORIDA - STATE ROAD DEPARTMENT AND RECORDED IN ROAD PLAT BOOK 1, PAGES 1 THROUGH 9, PUBLIC RECORDS OF SEMINOLE COUNTY, FLORIDA. ATTENTION IS DIRECTED TO THE FACT THAT THIS MAP MAY HAVE BEEN REDUCED IN SIZE BY REPRODUCTION. THIS MUST BE CONSIDERED WHEN OBTAINING SCALED DATA. UNLESS OTHERWISE SHOWN, ALL DIMENSIONS AS SHOWN HAVE BEEN CALCULATED FROM A CLOSED FIELD TRAVERSE OR DIRECT FIELD MEASUREMENT (F).
- (4) RIGHT-OF-WAY MONUMENTS ARE TO BE SET AFTER CONSTRUCTION OF THE PROJECT IS COMPLETE UNDER SEPARATE CONTRACT.

RIGHT-OF-WAY SURVEY CERTIFICATION:

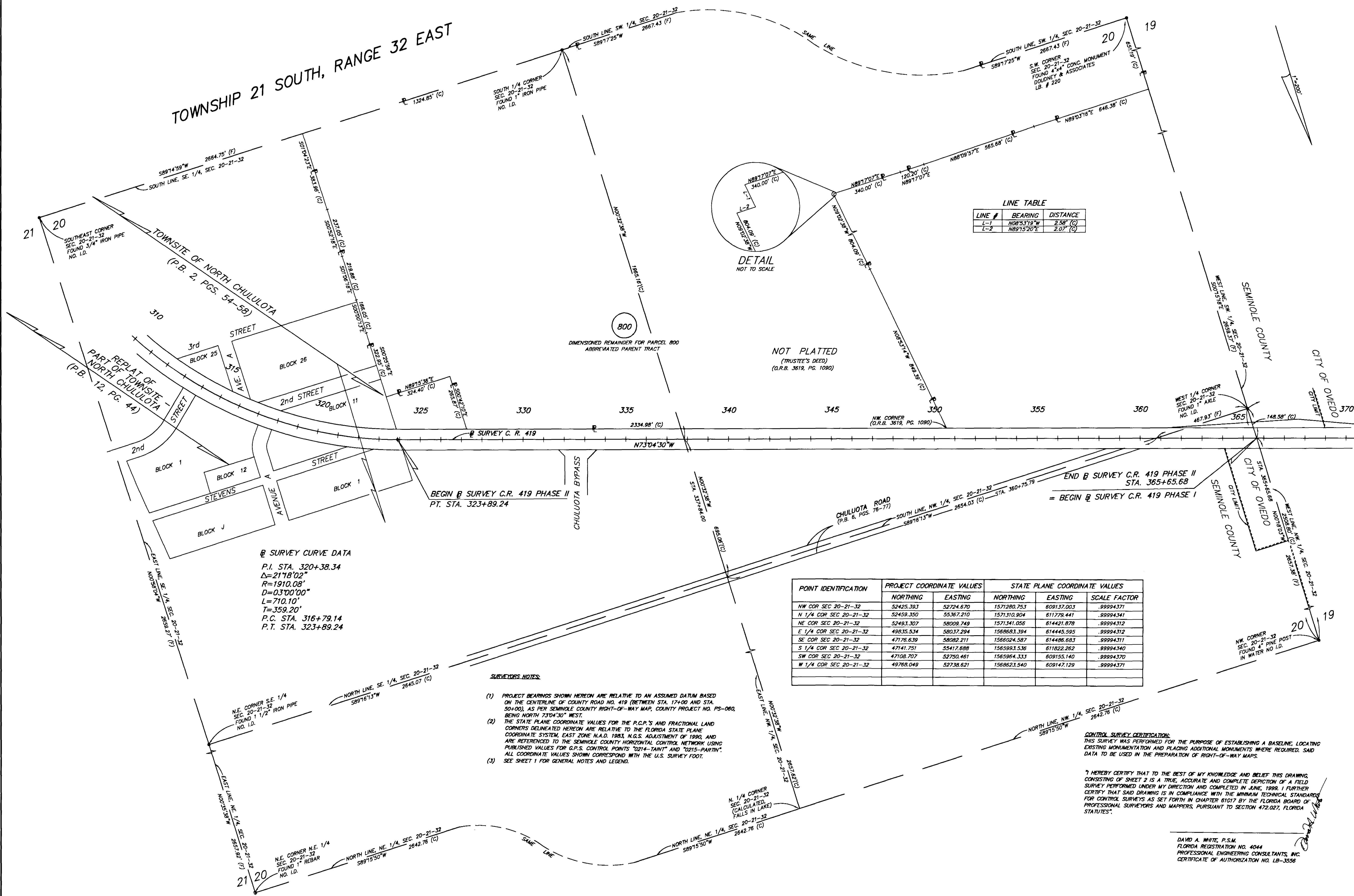
I HEREBY CERTIFY THIS RIGHT-OF-WAY SURVEY, CONSISTING OF SHEETS 1 THROUGH 6, FOR THE SPECIFIC PURPOSE OF SURVEYING, REFERENCING, DESCRIBING AND MAPPING THE RIGHT-OF-WAY CORRIDOR AND ADJOINING PROPERTY FOR THE TRANSPORTATION FACILITY SHOWN AND DEPICTED HEREON AND THAT SAID SURVEY WAS DONE UNDER MY RESPONSIBLE CHARGE AND MEETS THE MINIMUM TECHNICAL STANDARDS FOR LAND SURVEYORS AND MAPPERS AS SET FORTH IN CHAPTER 61G17-6, FLORIDA ADMINISTRATIVE CODE, FLORIDA STATUTES.

DAVID A. WHITE, P.S.M.
FLORIDA REGISTRATION NO. 4044
PROFESSIONAL ENGINEERING CONSULTANTS, INC.
CERTIFICATE OF AUTHORIZATION NO. LB-3558

| MAP BOOK | PAGE |
|--|------|
| <p>I HEREBY CERTIFY that this Right-of-Way Map was approved by the Seminole County Board of County Commissioners on _____ and represents the existing and proposed right-of-way of County Road # 419, phase 2, to the extent shown hereon. The right-of-way identified in the reproduction of Necessity adopted by the Seminole County Board of County Commissioners on the _____ day of _____, 2000 and recorded in Official Records Book _____ Page _____ of the Public Records of Seminole County, Florida.</p> | |
| <p>CHAIRMAN OF THE BOARD _____</p> | |
| <p>ATTEST: _____</p> | |
| <p>CLERK OF THE BOARD _____</p> | |
| <p>CERTIFICATE OF CLERK</p> | |
| <p>I HEREBY CERTIFY that I received this right-of-way map in accordance with the provisions of Section 177.131 Florida Statutes on this _____ day of _____, 2000.</p> | |
| <p>CLERK OF THE CIRCUIT COURT IN AND FOR SEMINOLE COUNTY FLORIDA.</p> | |

| | | | | | | | | | |
|--------------------|--|---------------------------------|---------------------------------|------------------------------|--------------------------------|------------|--|---|---|
| COVER SHEET | COUNTY OF SEMINOLE ENGINEERING DEPARTMENT RIGHT OF WAY ENGINEERING SECTION | APPROVED BY _____ DATE _____ | DESIGNED BY _____ DATE _____ | DRAWN BY _____ DATE _____ | CHECKED BY _____ DATE _____ | DATE _____ | PROJECT NO. LO-001 COUNTY ROAD NO. 419 - PHASE II SEMINOLE COUNTY, FLORIDA | MAPS PREPARED BY PEC PROFESSIONAL ENGINEERING CONSULTANTS, INC. 300 EAST ROBINSON STREET, ORLANDO, FLORIDA 32801 | FIELD BOOK NO.'S 814, 815, 816 & 887 SCALE: N/A SHEET 1 OF 6 |
| | | | REVISION | BY | DATE | REVISION | BY | DATE | FINAL |

TOWNSHIP 21 SOUTH, RANGE 32 EAST



LINE TABLE

| LINE # | BEARING | DISTANCE |
|--------|-------------|-----------|
| L-1 | N08°53'19"W | 2.58' (C) |
| L-2 | N89°15'20"E | 2.07' (C) |

② SURVEY CURVE DATA
 P.I. STA. 320+38.34
 $\Delta = 2178^{\circ}02''$
 $R = 1910.08'$
 $D = 03^{\circ}00'00''$
 $L = 710.10'$
 $T = 359.20'$
 P.C. STA. 316+79.14
 P.T. STA. 323+89.24

| POINT IDENTIFICATION | PROJECT COORDINATE VALUES | | STATE PLANE COORDINATE VALUES | | SCALE FACTOR |
|------------------------|---------------------------|-----------|-------------------------------|------------|--------------|
| | NORTHING | EASTING | NORTHING | EASTING | |
| NW COR SEC 20-21-32 | 52425.393 | 52724.870 | 1571280.753 | 608137.003 | .99994371 |
| N 1/4 COR SEC 20-21-32 | 52459.350 | 55367.210 | 1571310.904 | 611779.441 | .99994341 |
| NE COR SEC 20-21-32 | 52493.307 | 58009.749 | 1571341.056 | 614441.878 | .99994312 |
| E 1/4 COR SEC 20-21-32 | 49835.534 | 58037.294 | 1568683.394 | 614445.595 | .99994312 |
| SE COR SEC 20-21-32 | 47176.639 | 58082.211 | 1568024.587 | 614486.683 | .99994311 |
| S 1/4 COR SEC 20-21-32 | 47141.751 | 55417.688 | 1565993.536 | 611822.262 | .99994340 |
| SW COR SEC 20-21-32 | 47108.707 | 52750.461 | 1565964.333 | 609155.140 | .99994370 |
| W 1/4 COR SEC 20-21-32 | 49768.049 | 52738.621 | 1568623.540 | 609147.129 | .99994371 |

- SURVEYOR'S NOTES:**
- (1) PROJECT BEARINGS SHOWN HEREON ARE RELATIVE TO AN ASSUMED DATUM BASED ON THE CENTERLINE OF COUNTY ROAD NO. 419 (BETWEEN STA. 17+00 AND STA. 30+00), AS PER SEMINOLE COUNTY RIGHT-OF-WAY MAP, COUNTY PROJECT NO. PS-080, BEING NORTH 73°04'30" WEST.
 - (2) THE STATE PLANE COORDINATE VALUES FOR THE P.C.P.'S AND FRACTIONAL LAND CORNERS DELINEATED HEREON ARE RELATIVE TO THE FLORIDA STATE PLANE COORDINATE SYSTEM, EAST ZONE N.A.D. 1983, N.G.S. ADJUSTMENT OF 1990, AND ARE REFERENCED TO THE SEMINOLE COUNTY HORIZONTAL CONTROL NETWORK USING PUBLISHED VALUES FOR G.P.S. CONTROL POINTS "0214-TAINI" AND "0215-PARTIN". ALL COORDINATE VALUES SHOWN CORRESPOND WITH THE U.S. SURVEY FOOT.
 - (3) SEE SHEET 1 FOR GENERAL NOTES AND LEGEND.

CONTROL SURVEY CERTIFICATION:
 THIS SURVEY WAS PERFORMED FOR THE PURPOSE OF ESTABLISHING A BASELINE, LOCATING EXISTING MONUMENTATION AND PLACING ADDITIONAL MONUMENTS WHERE REQUIRED, SAID DATA TO BE USED IN THE PREPARATION OF RIGHT-OF-WAY MAPS.

I HEREBY CERTIFY THAT TO THE BEST OF MY KNOWLEDGE AND BELIEF THIS DRAWING, CONSISTING OF SHEET 2 IS A TRUE, ACCURATE AND COMPLETE DEPICTION OF A FIELD SURVEY PERFORMED UNDER MY DIRECTION AND COMPLETED IN JUNE, 1999. I FURTHER CERTIFY THAT SAID DRAWING IS IN COMPLIANCE WITH THE MINIMUM TECHNICAL STANDARDS FOR CONTROL SURVEYS AS SET FORTH IN CHAPTER 61G17 BY THE FLORIDA BOARD OF PROFESSIONAL SURVEYORS AND MAPPERS, PURSUANT TO SECTION 472.027, FLORIDA STATUTES.

DAVID A. WHITE, P.S.M.
 FLORIDA REGISTRATION NO. 4044
 PROFESSIONAL ENGINEERING CONSULTANTS, INC.
 CERTIFICATE OF AUTHORIZATION NO. LB-3558

CONTROL SURVEY

COUNTY OF SEMINOLE
 ENGINEERING DEPARTMENT
 RIGHT OF WAY ENGINEERING SECTION

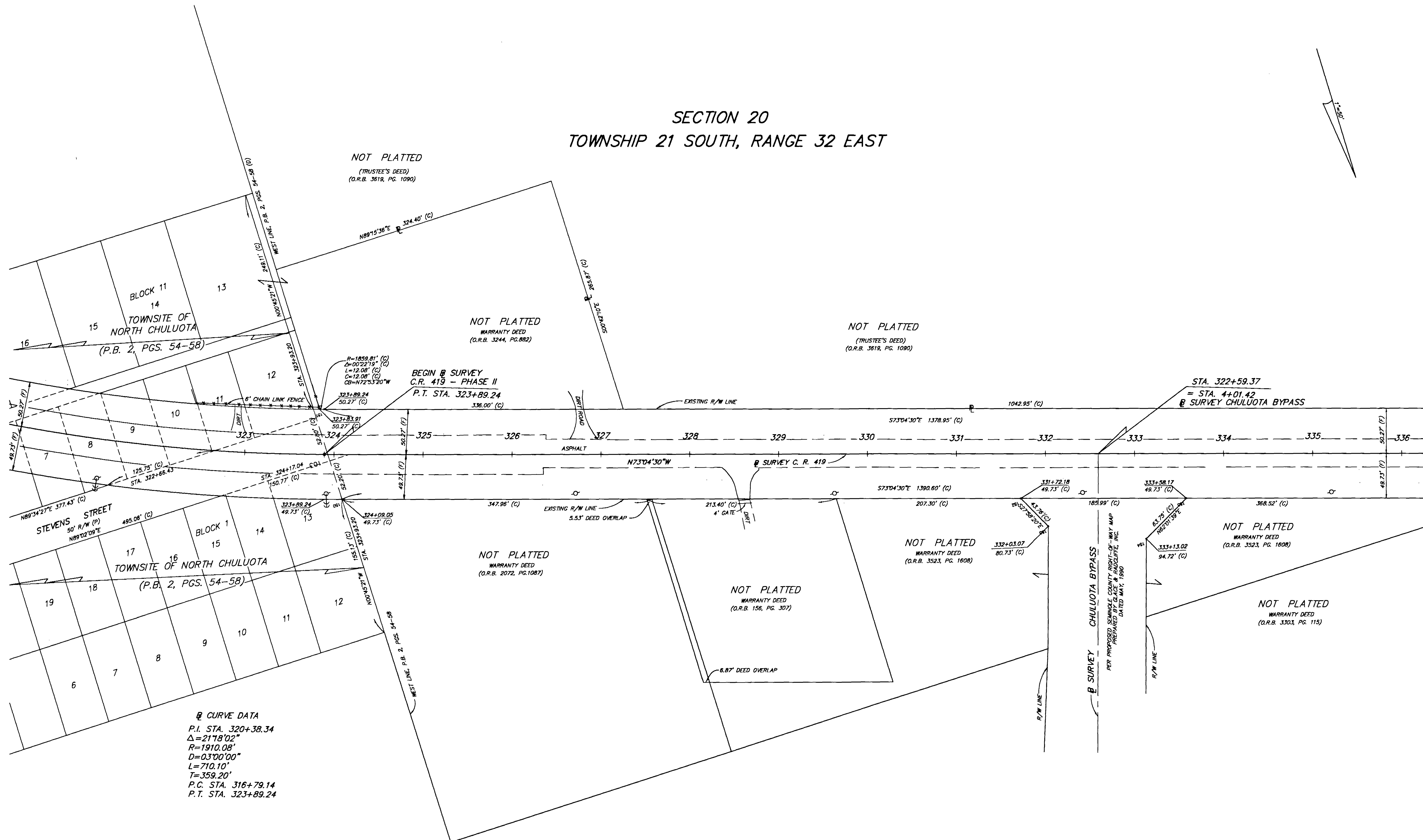
| APPROVED BY | DATE | REVISION | BY | DATE | REVISION | BY | DATE |
|-------------|------|----------|----|------|----------|----|------|
| | | | | | | | |

PROJECT NO. LO-001
 COUNTY ROAD NO. 419 - PHASE II
 SEMINOLE COUNTY, FLORIDA

| MAPS PREPARED BY | FIELD BOOK NO.'S |
|--|---------------------|
| PEC PROFESSIONAL ENGINEERING CONSULTANTS, INC. 200 EAST ROBINSON STREET, ORLANDO, FLORIDA 32801 | 814, 815, 816 & 887 |

SCALE: 1"=200'
 SHEET 2 OF 6

SECTION 20
TOWNSHIP 21 SOUTH, RANGE 32 EAST



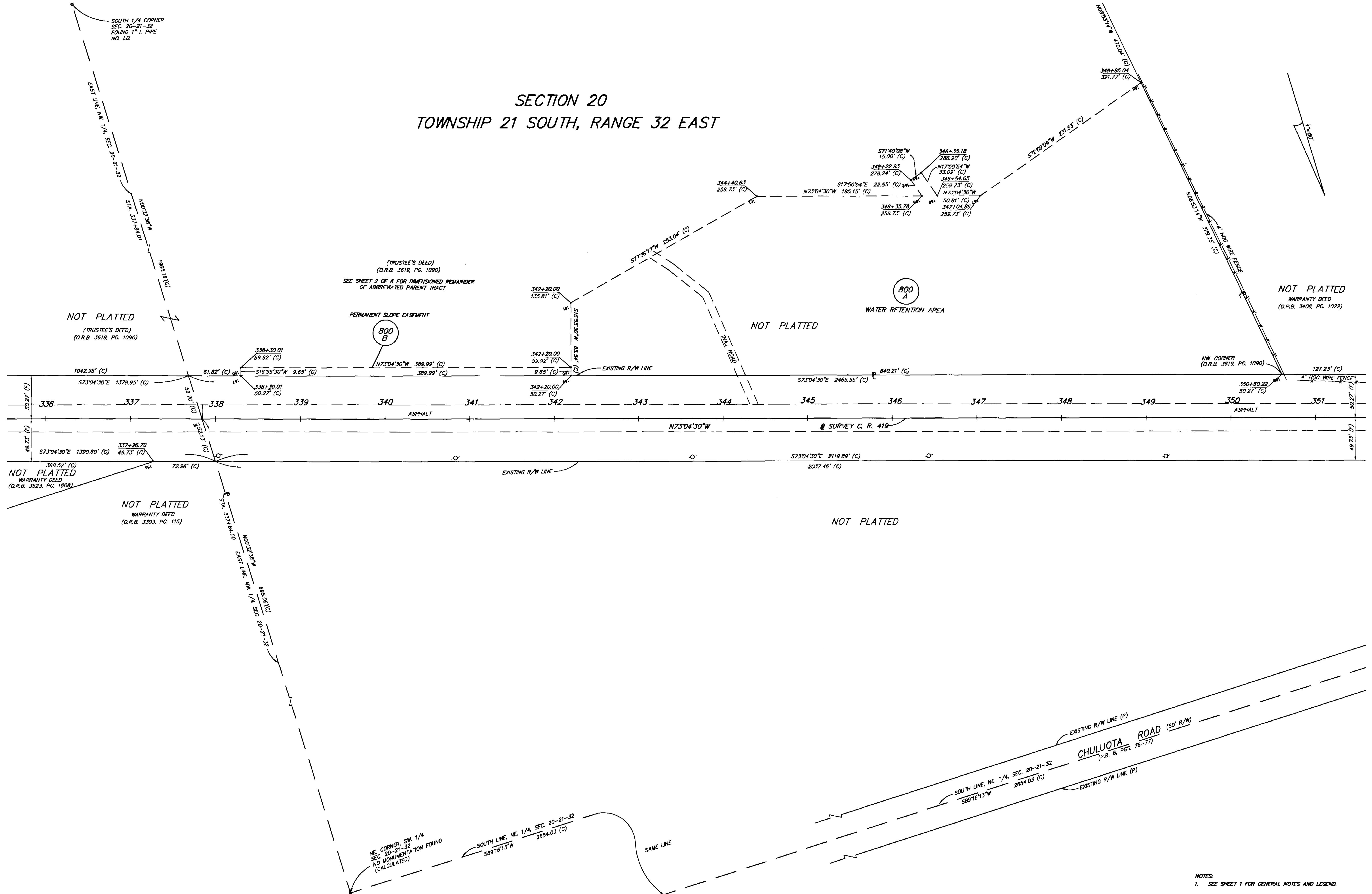
② CURVE DATA
 P.I. STA. 320+38.34
 $\Delta = 217^{\circ}02'$
 $R = 1910.08'$
 $D = 03^{\circ}00'00''$
 $L = 710.10'$
 $T = 359.20'$
 P.C. STA. 316+79.14
 P.T. STA. 323+89.24

NOTES:
 1. SEE SHEET 1 FOR GENERAL NOTES AND LEGEND.

| | | | | | | | | | | |
|------------------|--|-------------|-------------|----------|------------|----------|------------------------------|---|---|--------------|
| RIGHT OF WAY MAP | COUNTY OF SEMINOLE ENGINEERING DEPARTMENT RIGHT OF WAY ENGINEERING SECTION | APPROVED BY | DESIGNED BY | DRAWN BY | CHECKED BY | DATE | PROJECT NO. LO-001 | MAPS PREPARED BY PEC PROFESSIONAL ENGINEERING CONSULTANTS, INC. 200 EAST ROBINSON STREET, ORLANDO, FLORIDA 32801 | FIELD BOOK NO.'S 814, 815, 816 & 887 | |
| | | DATE | REVISION | BY | DATE | REVISION | | | | BY |
| | | | | | | | CHECKED - 100% FINAL 100% | COUNTY ROAD NO. 419 - PHASE II SEMINOLE COUNTY, FLORIDA | DETAIL SHEET | SHEET 3 OF 6 |

C.R. 419 WIDENING FROM ± WEST LINE OF "TOWNSITE OF NORTH CHULUOTA" TO THE W. LINE OF SECTION 20-21-32.

SECTION 20
TOWNSHIP 21 SOUTH, RANGE 32 EAST



NOTES:
1. SEE SHEET 1 FOR GENERAL NOTES AND LEGEND.

RIGHT OF WAY MAP

COUNTY OF SEMINOLE
ENGINEERING DEPARTMENT
RIGHT OF WAY ENGINEERING SECTION

| APPROVED BY | DESIGNED BY | DRAWN BY | CHECKED BY | DATE |
|-------------|-------------|----------|------------|---------|
| | KRC | DAW | | 2-10-99 |
| | P.S. | J.L.M. | D.A.K. | 8-18-99 |
| | P.S. | J.L.M. | D.A.K. | 5-5-00 |
| | P.S. | J.L.M. | D.A.K. | 8-22-00 |

PROJECT NO. LO-001
COUNTY ROAD NO. 419 - PHASE II
SEMINOLE COUNTY, FLORIDA

| MAPS PREPARED BY | FIELD BOOK NO.'S |
|--|---------------------|
| PEC PROFESSIONAL ENGINEERING CONSULTANTS, INC. 200 EAST ROBINSON STREET, ORLANDO, FLORIDA 32801 | 814, 815, 816 & 887 |
| SCALE: 1"=50' | SHEET 4 OF 6 |

SECTION 20
TOWNSHIP 21 SOUTH, RANGE 32 EAST

S.W. CORNER
SEC. 20-21-32
FOUND 4"x4" C.M.
DOUDNEY & ASSOCIATES
L.B. # 220

UN-RECORDED PLAT OF LAKE EVA ESTATES
(SUBDIVISION NO. 5UU)

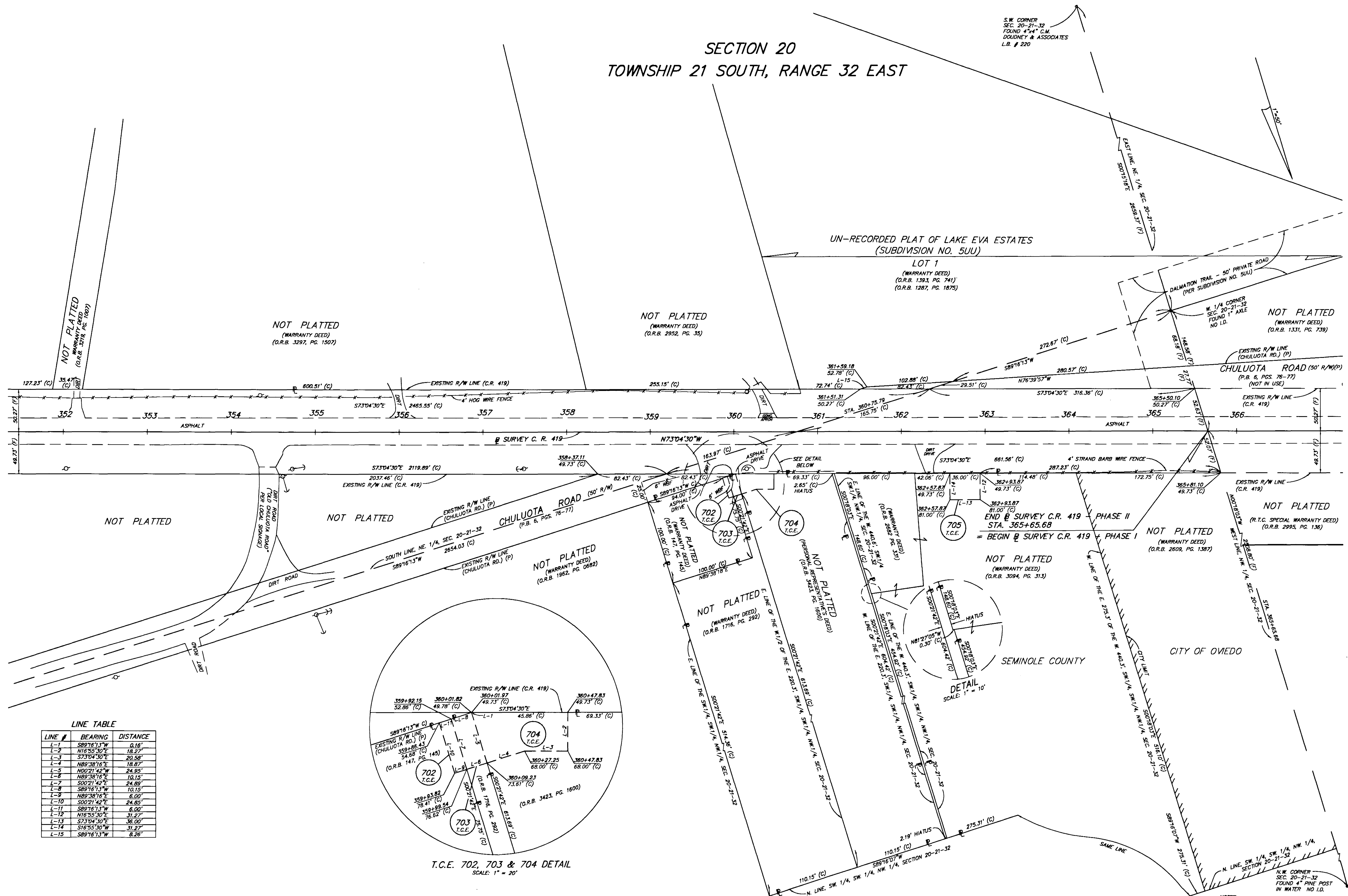
LOT 1
(WARRANTY DEED)
(O.R.B. 1393, PG. 741)
(O.R.B. 1287, PG. 1875)

NOT PLATTED
(WARRANTY DEED)
(O.R.B. 2952, PG. 35)

NOT PLATTED
(WARRANTY DEED)
(O.R.B. 3297, PG. 1507)

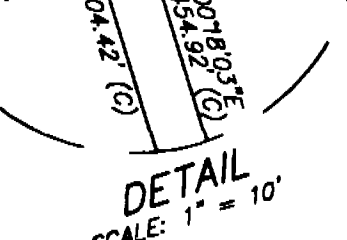
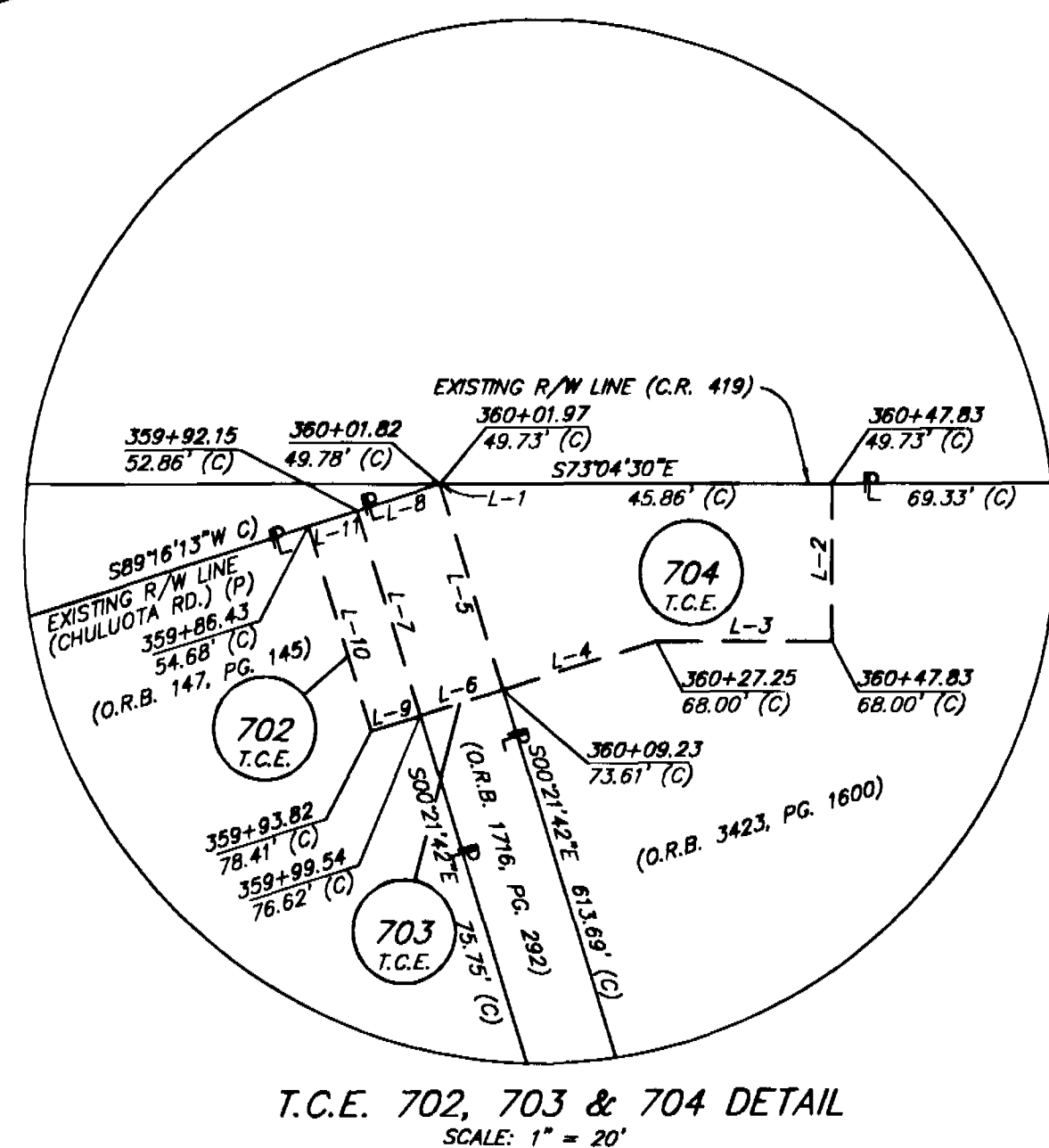
NOT PLATTED
(WARRANTY DEED)
(O.R.B. 1331, PG. 739)

NOT PLATTED
(WARRANTY DEED)
(O.R.B. 3216, PG. 1007)



LINE TABLE

| LINE # | BEARING | DISTANCE |
|--------|-------------|----------|
| L-1 | S89°16'13"W | 0.16 |
| L-2 | N16°55'30"E | 18.27 |
| L-3 | S73°04'30"E | 20.58 |
| L-4 | N80°30'16"E | 18.87 |
| L-5 | N00°21'42"W | 24.95 |
| L-6 | N89°58'16"E | 10.15 |
| L-7 | S00°21'42"E | 24.89 |
| L-8 | S89°16'13"W | 10.15 |
| L-9 | N80°30'16"E | 6.00 |
| L-10 | S00°21'42"W | 24.85 |
| L-11 | S89°16'13"W | 6.00 |
| L-12 | N16°55'30"E | 31.27 |
| L-13 | S73°04'30"E | 36.00 |
| L-14 | S16°55'30"W | 31.27 |
| L-15 | S89°16'13"W | 8.26 |



RIGHT OF WAY MAP

COUNTY OF SEMINOLE
ENGINEERING DEPARTMENT
RIGHT OF WAY ENGINEERING SECTION

APPROVED BY

| | | | | | | |
|------|----------|----|------|----------|----|------|
| DATE | REVISION | BY | DATE | REVISION | BY | DATE |
|------|----------|----|------|----------|----|------|

| SUBMITTAL | DESIGNED BY | DRAWN BY | CHECKED BY | DATE |
|--------------|-------------|----------|------------|---------|
| PRELIM - 308 | P.S. | KRC | DAW | 2-10-88 |
| PRELIM - 808 | P.S. | J.L.M. | D.A.K. | 8-18-88 |
| FINAL - 808 | P.S. | J.L.M. | D.A.K. | 9-5-00 |
| CHECK - 1008 | P.S. | J.L.M. | D.A.K. | 6-22-00 |
| FINAL - 1008 | P.S. | J.L.M. | D.A.K. | |

PROJECT NO. LO-001
COUNTY ROAD NO. 419 - PHASE II
SEMINOLE COUNTY, FLORIDA

MAPS PREPARED BY
PEC PROFESSIONAL ENGINEERING CONSULTANTS, INC.
200 EAST ROBINSON STREET, ORLANDO, FLORIDA 32801
FIELD BOOK NO.'S
814, 815, 816 & 887
SCALE: 1"=50'
SHEET 5 OF 6

C.R. 419 WIDENING FROM ± WEST LINE OF "TOWNSITE OF NORTH CHULUOTA" TO THE W. LINE OF SECTION 20-21-32.

