

PW-ROWFDOT

*Project Name= Celery Ave aka SR 415

FDOT Section #= 77161-2501

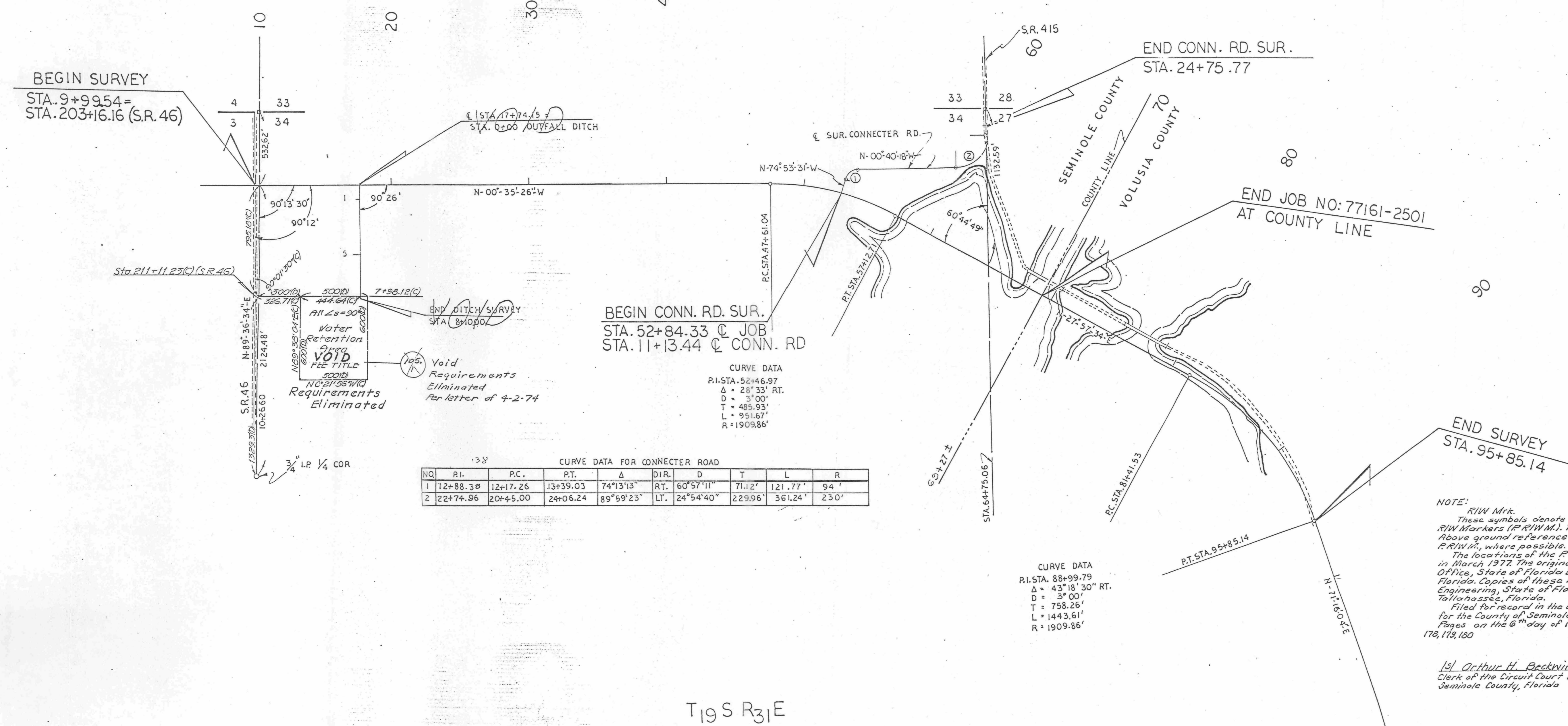
Doc Date= 11/16/1973

Section/Township/Range= 041931

notes=

PW-IndexNum= 66

1" = 400'



138 CURVE DATA FOR CONNECTOR ROAD

NO.	P.I.	P.C.	P.T.	Δ	DIR.	D	T	L	R
1	12+88.38	12+17.26	13+39.03	74°13'13"	RT.	60°57'11"	71.12'	121.77'	94'
2	22+74.96	20+45.00	24+06.24	89°59'23"	LT.	24°54'40"	229.96'	361.24'	230'

CURVE DATA
 P.I. STA. 88+99.79
 Δ = 43°18'30" RT.
 D = 3°00'
 T = 758.26'
 L = 1443.61'
 R = 1909.86'

NOTE:
 R/W Mkt. These symbols denote the location of underground Permanent R/W Markers (P.R.W.M.). The P.R.W.M. are 3/8" copper coated rods. Above ground reference markers are located within 1' of the P.R.W.M., where possible.
 The locations of the P.R.W.M. were established by field survey in March 1972. The original field notes are filed in the District 5 Office, State of Florida Department of Transportation, Orlando, Florida. Copies of these notes are filed in the office of R/W Engineering, State of Florida Department of Transportation, Tallahassee, Florida.
 Filed for record in the Office of the Clerk of the Circuit Court for the County of Seminole, State of Florida, in Map Book 1, Pages on the 6th day of February, A.D. 1979.
 178, 179, 180

1st Arthur H. Beckwith
 Clerk of the Circuit Court by: Joan M. Wilke,
 Seminole County, Florida Deputy Clerk

T19 S R31 E

BEARINGS ARE BASED ON SECTION 7704-109

UTILITIES:
 POWER: FLORIDA POWER AND LIGHT
 TELEPHONE: SOUTHERN BELL TELEPHONE AND TELEGRAPH

KEY MAP

STATE OF FLORIDA
 DEPARTMENT OF TRANSPORTATION

RIGHT OF WAY MAP

STATE ROAD NO. 415 SEMINOLE COUNTY

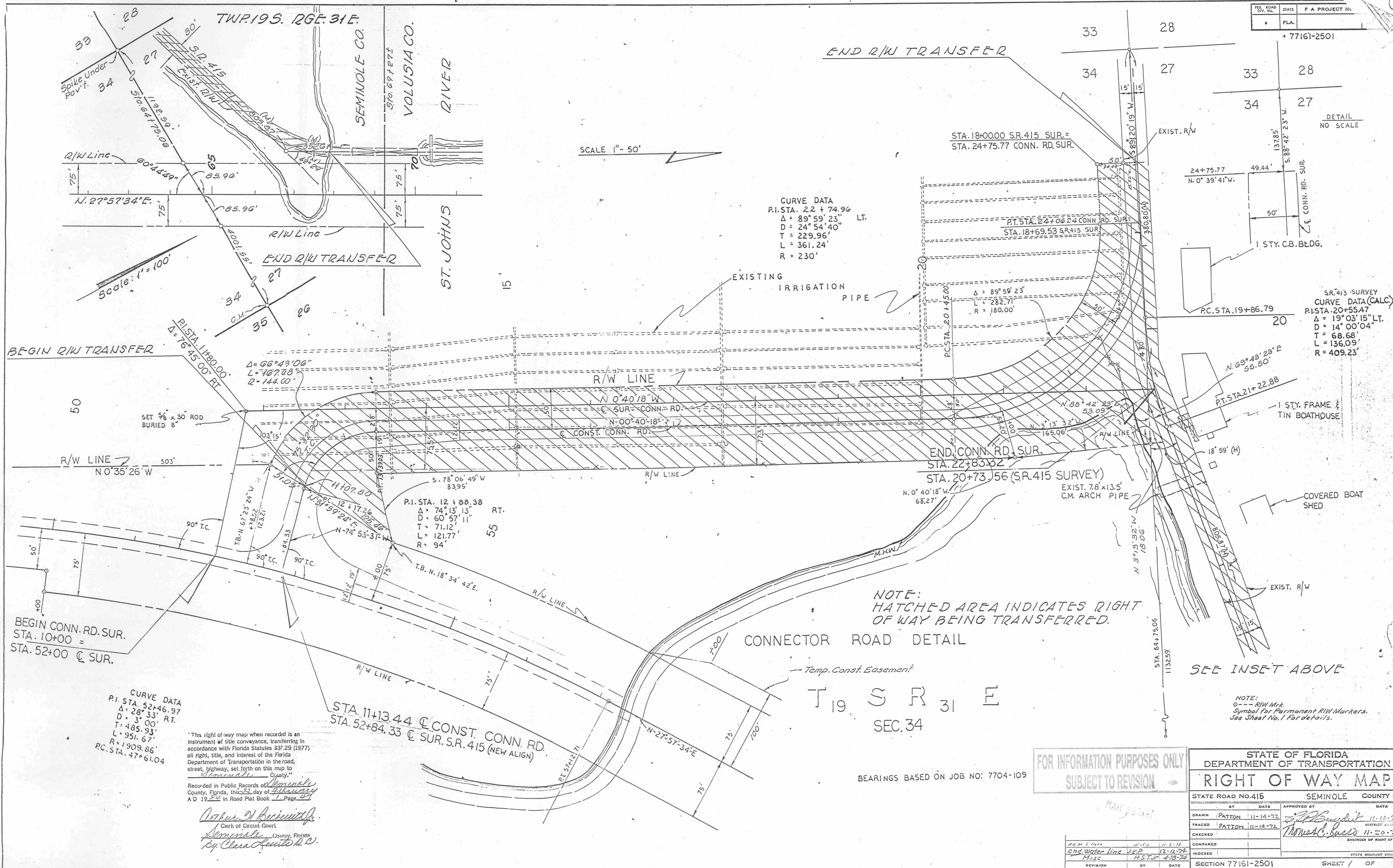
FOR INFORMATION PURPOSES ONLY
 SUBJECT TO REVISION

BY	DATE	APPROVED BY	DATE
DRAWN	PATTON 11-17-72	<i>L. H. Benedict</i>	1-10
TRACED	PATTON 11-17-72		DISTRICT EN
CHECKED		<i>Thomas C. Gust</i>	1-22-79
COMPARED			ENGINEER OF RIGHT OF WAY
INDEXED			
REVISION	BY	DATE	
1	JKP	10-23-73	
2	Patton	1-16-79	

SECTION 77161 2501 SHEET 1 OF

B.I. NO:
 27524

100 109 37730
 37703
 300671



SCALE 1" = 50'

CURVE DATA
P.I. STA. 22 + 74.96
Δ = 89° 59' 23" LT.
D = 24° 54' 40"
T = 229.96'
L = 361.24'
R = 230'

S.R. 415 SURVEY
CURVE DATA (CALC.)
P.I. STA. 20 + 55.47
Δ = 19° 03' 15" LT.
D = 14° 00' 04"
T = 68.68'
L = 136.09'
R = 409.23'

NOTE:
HATCHED AREA INDICATES RIGHT
OF WAY BEING TRANSFERRED.

CONNECTOR ROAD DETAIL

T 19 S R 31 E
SEC. 34

BEARINGS BASED ON JOB NO: 7704-109

FOR INFORMATION PURPOSES ONLY
SUBJECT TO REVISION

STATE OF FLORIDA DEPARTMENT OF TRANSPORTATION			
RIGHT OF WAY MAP			
STATE ROAD No. 415		SEMINOLE COUNTY	
BY	DATE	APPROVED BY	DATE
DRAWN PATTON	11-14-72	<i>[Signature]</i>	11-16-72
TRACED PATTON	11-14-72	<i>[Signature]</i>	11-20-72
CHECKED		<i>[Signature]</i>	
COMPARED			
INDEXED			
REVISION	BY	DATE	
1	W.P.	11-14-72	
2	W.P.	11-14-72	
3	W.P.	11-14-72	
4	W.P.	11-14-72	
5	W.P.	11-14-72	
6	W.P.	11-14-72	
7	W.P.	11-14-72	
8	W.P.	11-14-72	
9	W.P.	11-14-72	
10	W.P.	11-14-72	
11	W.P.	11-14-72	
12	W.P.	11-14-72	
13	W.P.	11-14-72	
14	W.P.	11-14-72	
15	W.P.	11-14-72	
16	W.P.	11-14-72	
17	W.P.	11-14-72	
18	W.P.	11-14-72	
19	W.P.	11-14-72	
20	W.P.	11-14-72	
21	W.P.	11-14-72	
22	W.P.	11-14-72	
23	W.P.	11-14-72	
24	W.P.	11-14-72	
25	W.P.	11-14-72	
26	W.P.	11-14-72	
27	W.P.	11-14-72	
28	W.P.	11-14-72	
29	W.P.	11-14-72	
30	W.P.	11-14-72	
31	W.P.	11-14-72	
32	W.P.	11-14-72	
33	W.P.	11-14-72	
34	W.P.	11-14-72	
35	W.P.	11-14-72	
36	W.P.	11-14-72	
37	W.P.	11-14-72	
38	W.P.	11-14-72	
39	W.P.	11-14-72	
40	W.P.	11-14-72	
41	W.P.	11-14-72	
42	W.P.	11-14-72	
43	W.P.	11-14-72	
44	W.P.	11-14-72	
45	W.P.	11-14-72	
46	W.P.	11-14-72	
47	W.P.	11-14-72	
48	W.P.	11-14-72	
49	W.P.	11-14-72	
50	W.P.	11-14-72	
51	W.P.	11-14-72	
52	W.P.	11-14-72	
53	W.P.	11-14-72	
54	W.P.	11-14-72	
55	W.P.	11-14-72	
56	W.P.	11-14-72	
57	W.P.	11-14-72	
58	W.P.	11-14-72	
59	W.P.	11-14-72	
60	W.P.	11-14-72	
61	W.P.	11-14-72	
62	W.P.	11-14-72	
63	W.P.	11-14-72	
64	W.P.	11-14-72	
65	W.P.	11-14-72	
66	W.P.	11-14-72	
67	W.P.	11-14-72	
68	W.P.	11-14-72	
69	W.P.	11-14-72	
70	W.P.	11-14-72	
71	W.P.	11-14-72	
72	W.P.	11-14-72	
73	W.P.	11-14-72	
74	W.P.	11-14-72	
75	W.P.	11-14-72	
76	W.P.	11-14-72	
77	W.P.	11-14-72	
78	W.P.	11-14-72	
79	W.P.	11-14-72	
80	W.P.	11-14-72	
81	W.P.	11-14-72	
82	W.P.	11-14-72	
83	W.P.	11-14-72	
84	W.P.	11-14-72	
85	W.P.	11-14-72	
86	W.P.	11-14-72	
87	W.P.	11-14-72	
88	W.P.	11-14-72	
89	W.P.	11-14-72	
90	W.P.	11-14-72	
91	W.P.	11-14-72	
92	W.P.	11-14-72	
93	W.P.	11-14-72	
94	W.P.	11-14-72	
95	W.P.	11-14-72	
96	W.P.	11-14-72	
97	W.P.	11-14-72	
98	W.P.	11-14-72	
99	W.P.	11-14-72	
100	W.P.	11-14-72	

B.I. NO: 527524

500/1/86 57135
57135
58867

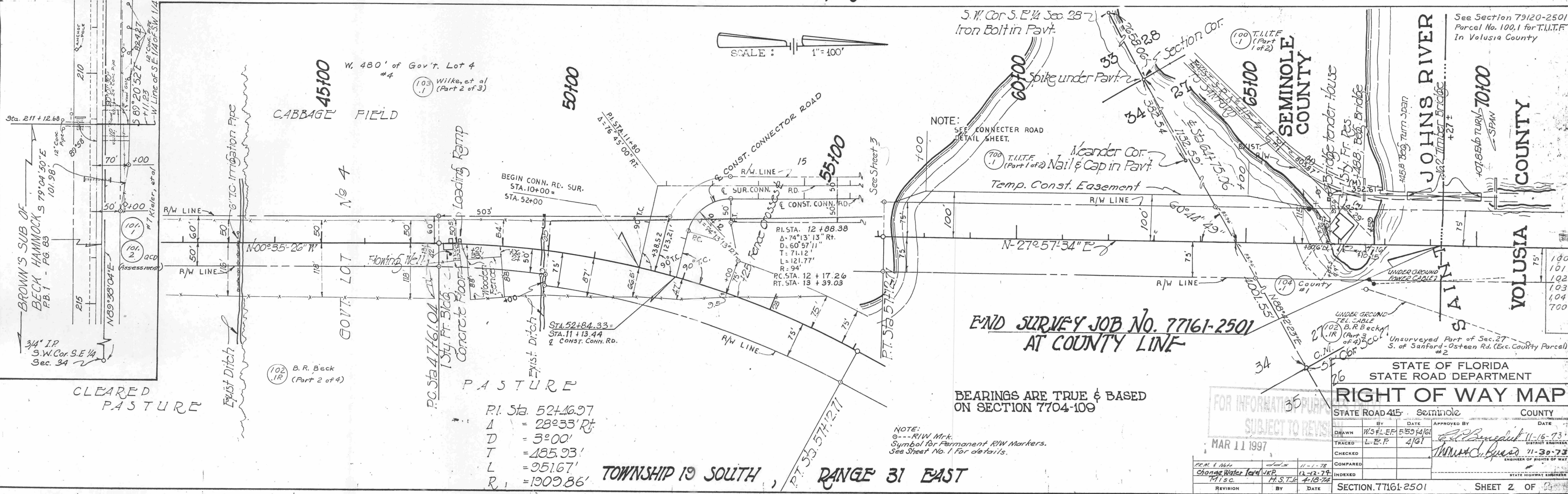
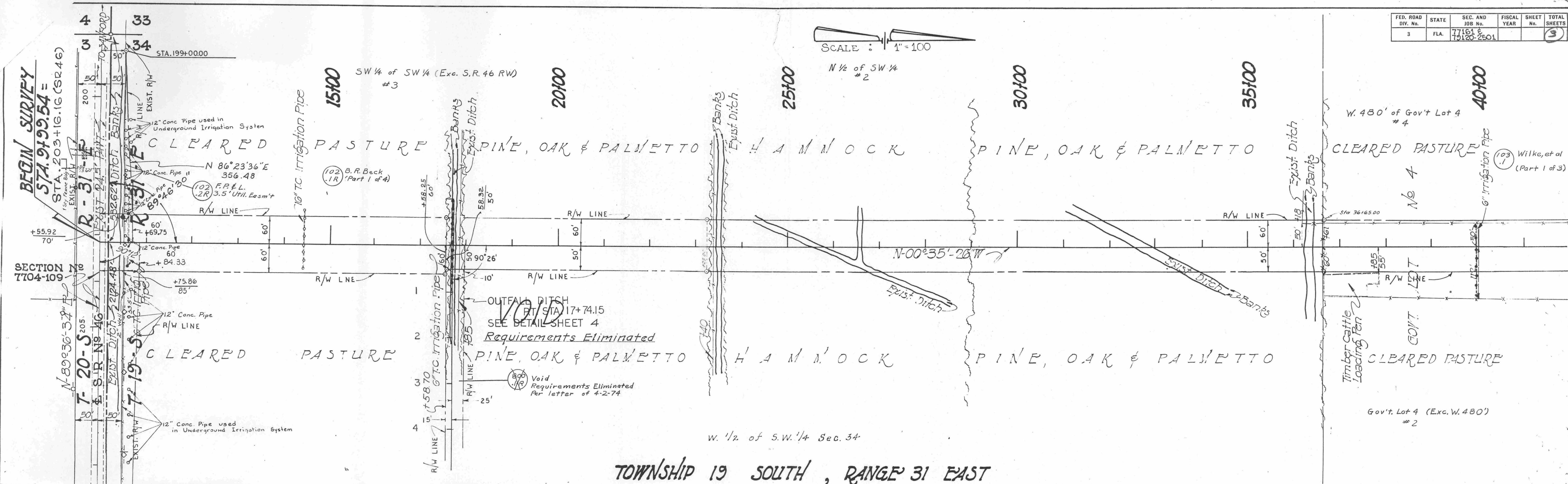
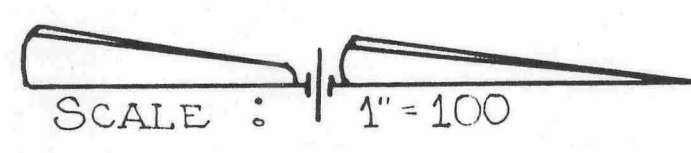
CURVE DATA
P.I. STA. 52+46.97
Δ = 28° 33' RT.
D = 3° 00'
T = 485.00'
L = 951.93'
R = 1909.86'
P.C. STA. 47+61.04

This right-of-way map when recorded is an instrument of title conveyance, transferring in accordance with Florida Statutes 337.29 (1977) all right, title, and interest of the Florida Department of Transportation in the road, street, highway, set forth on this map to Seminole County, Florida.

Recorded in Public Records of Seminole County, Florida, this 23 day of February, A.D. 1974 in Road Plat Book 1 Page 47

Arthur W. Beckwith
Clerk of Circuit Court
Seminole County, Florida
By: Clara Acuña de O.

FED. ROAD DIV. No.	STATE	SEC. AND JOB No.	FISCAL YEAR	SHEET No.	TOTAL SHEETS
3	FLA.	77161 & 79120-2501		3	3



- P.I. Sta. 52+46.97
- A = 28°33' Rt
- D = 3°00'
- T = 185.93'
- L = 95.167'
- R₁ = 1909.86'

NOTE:
 O = R/W Mkr.
 Symbol for Permanent R/W Markers.
 See Sheet No. 1 for details.

STATE OF FLORIDA
 STATE ROAD DEPARTMENT

RIGHT OF WAY MAP

STATE ROAD 415 - Seminole COUNTY

FOR INFORMATION PURPOSES SUBJECT TO REVISION	APPROVED BY <i>[Signature]</i> DATE 11-16-73
DRAWN BY W.S.L.E.P. 5/5/74/61	DISTRICT ENGINEER
TRACED BY L.E.P. 4/61	DATE 11-30-73
CHECKED BY <i>[Signature]</i>	ENGINEER OF RIGHTS OF WAY
COMPARED BY M.I.S.C.	DATE 4-18-74
INDEXED BY H.S.T.A.	DATE 4-18-74

MAR 11 1997

SECTION 77161-2501 SHEET 2 OF 3

I. NO. 7524
 BROWN'S SUB OF BECK HAMMOCK S 79°00'50"E P.B. 1 - PG. 83
 3/4" I.P. S.W. Cor. S.E. 1/4 Sec. 34
 BOOK 185 57150 57155 58867

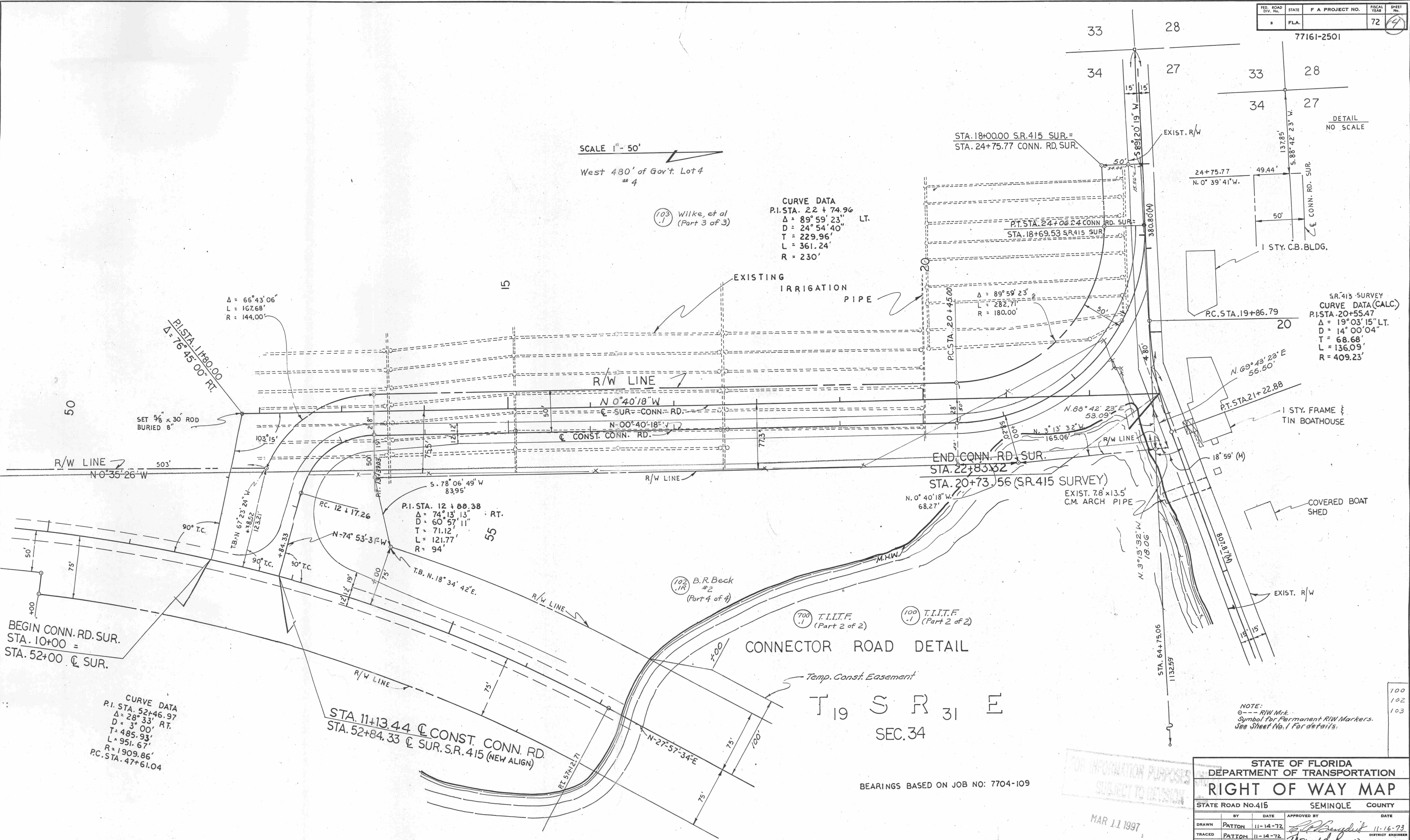
SCALE 1" = 50'
West 480' of Gov't. Lot 4 # 4

CURVE DATA
P.I. STA. 22 + 74.96
Δ = 89° 59' 23" LT.
D = 24° 54' 40"
T = 229.96'
L = 361.24'
R = 230'

(103) Wilke, et al
(Part 3 of 3)

DETAIL NO SCALE

SR. 415 SURVEY CURVE DATA (CALC.)
P.I. STA. 20+55.47
Δ = 19° 03' 15" LT.
D = 14° 00' 04"
T = 68.68'
L = 136.09'
R = 409.23'



CONNECTOR ROAD DETAIL

T₁₉ S R 31 E
SEC. 34

BEARINGS BASED ON JOB NO: 7704-109

NOTE:
--- R/W Mks.
Symbol for Permanent R/W Markers.
See Sheet No. 1 for details.

STATE OF FLORIDA DEPARTMENT OF TRANSPORTATION		SEMINOLE COUNTY	
RIGHT OF WAY MAP			
STATE ROAD No. 415		SEMINOLE COUNTY	
BY	DATE	APPROVED BY	DATE
DRAWN	PATTON 11-14-72	<i>[Signature]</i>	11-16-73
TRACED	PATTON 11-14-72	THOMAS C. ROSS	11-30-73
CHECKED			
COMPARED			
INDEXED			
REVISION		BY	DATE
1	CHD Water Line	J.K.P.	12-12-74
2	Misc.	H.S.T.J.H.	4-18-74

FOR INFORMATION PURPOSES
SUBJECT TO REVISION
MAR 11 1997

I. NO: 527524
DATE: 11-16-73
38867

100
102
103